

Incident Action Plan



6. INSTRUCTIONS AND ASSIGNMENTS NOT CLEAR

Day Operational Period

Friday

4/14/17

0800-2000

Cowbell Fire

16,958 acres

47% contained

FL-BCP-017033

PPKX14 (1502)

PFFSKX14017001

FFF2000000KX140



INCIDENT OBJECTIVES	1. Incident Name Cowbell Fire	2. Date Prepared 4/13/17	3. Time Prepared 1700												
4. Operational Period 4/14/17 0800 - 2000															
5. General Control Objectives For The Incident <u>Objectives for the Incident:</u> <ul style="list-style-type: none"> • Protection of human life is top priority through the use of sound risk management decisions. • Protect private property and infrastructure, federal facilities, critical transportation corridors, recreational and cultural resource values, T&E species and their habitat (e.g. Florida Panther, Florida bonneted bat, Red-Cockaded Woodpecker), and wilderness values through coordination with READS and following MIST Tactics on current and all initial and extended attack fires. • Provide opportunities to communicate and educate the public on the role of fire in the BCP and FPR ecosystems through social media and other outlets. • Provide training opportunities for Preserve, State, and local federal fire agency personnel to actively enhance successional planning of future firefighting personnel. • Provide initial attack for Big Cypress National Preserve and Florida Panther Refuge. 															
<u>Control Objectives:</u> <ul style="list-style-type: none"> • Keep fire: <ul style="list-style-type: none"> ○ West of Add 14 and Add 17 on the eastern side ○ South of the Preserve boundary on the northern side ○ North of Interstate 75 on the south side ○ East of State Highway 29 on the west side • To minimize impacts to high values including Seminole and Miccosukee tribal lands, Sanctuary community, and private land within and near to the boundaries of the Big Cypress National Preserve and Florida Panther Wildlife Refuge. • Minimize smoke impacts on I-75, State Road 29 and US Highway 41 in order to avoid safety threats to the public. • Utilize confine, contain, and point source protection strategies and tactics that commit responders only to operations where and when they can be successful and under conditions where important values actually at risk are protected with the least exposure necessary while sustaining relationships with the people we serve. 															
6. Weather forecast for Period Onshore winds will continue to keep RH values moderated due to the marine influence. Winds will pick a little more in the afternoon due to sea breeze passage. There's a chance of a shower developing late today and tonight.															
7. General Safety Message Look up, look down, look all around for hazards, recognize them and mitigate them.															
8. ATTACHMENTS (X IF ATTACHED) <table style="width: 100%; border: none;"> <tr> <td style="width: 25%;">[X] Organization List - ICS 203</td> <td style="width: 25%;">[X] Medical Plan - ICS 206</td> <td style="width: 25%;">[] _____</td> <td style="width: 25%;"></td> </tr> <tr> <td>[X] Division Assignment Lists - ICS 204</td> <td>[X] Incident Map</td> <td>[] _____</td> <td></td> </tr> <tr> <td>[X] Communications Plan - ICS 205</td> <td>[X] Traffic Plan</td> <td>[] _____</td> <td></td> </tr> </table>				[X] Organization List - ICS 203	[X] Medical Plan - ICS 206	[] _____		[X] Division Assignment Lists - ICS 204	[X] Incident Map	[] _____		[X] Communications Plan - ICS 205	[X] Traffic Plan	[] _____	
[X] Organization List - ICS 203	[X] Medical Plan - ICS 206	[] _____													
[X] Division Assignment Lists - ICS 204	[X] Incident Map	[] _____													
[X] Communications Plan - ICS 205	[X] Traffic Plan	[] _____													
9. Prepared By (Planning Section Chief) /s/ Dave Berens / Dave Dobbs	10. Approved By (Incident Commander) /s/ Steve Parrish														

ORGANIZATION ASSIGNMENT LIST		9.	Operations Section	
1. Incident Name COWBELL FIRE		Lead Operations	Greg Brooks	
		Planning Operations	Steve Weaver, Paul Varnedoe (t)	
		Field Operations	Jim Durrwachter, Mike Davis (t)	
2. Date 04/13/17		3. Time 1700		
4. Operational Period 04/14/17 DAY (0800 – 2000)		a.	Divisions/Groups	
5. Incident Commander and Staff		Division	A	Chad Cook, Heath Thomas (t)
Incident Commander Steve Parrish, Lance Elmore (t)		Division	D	UNSTAFFED
		Division	G	Chuck Alluisi/ Mike Honeycutt (t)
		Division	Z	Tom Crews, Micah Johnson/Chris Richards (t)
Deputy Incident Commander Marty Bentley, Debbie Beard (t)		Division	Initial Attack	Chris Croddy
Liaison Officer Mike Wright, Pam Martin (t)		Division	Parliament & Misc Fires	UNSTAFFED
Safety Officer Buddy Kelley, Mark Sullivan, Ken Gordon (t)		Group	Structure Protection	Ryan Vice
Information Officer Michelle Burnett, Susan Blake, Donald Simon (t)				
6. Agency Reps				
Agency Administrator	Tammy Whittington (Big Cypress)			
Agency Administrator	J.D. Lee (Big Cypress)			
Chief of Fire & Aviation	Jordan McNight (Big Cypress)			
AFMO	Byron Hart (BICY/Panther)			
Zone FMO	Cass Palmer (Panther)			
Collier Co. Sheriff	Lt. Jake Walker	b.	Air Operations Branch	
Seminole Tribe of Florida	Grant Steelman			
Florida Highway Patrol	Lt. Joseph Bowers	Air Operation Branch Director	Mike Rock	
Greater Naples Fire Rescue	J. Nolan Sapp	Air Support Group Supervisor	Pete Kubiak/Mike O'Leary (t)	
FFS Collier Co Forest Area Sup	Tony Curella	Air Tactical Group Supervisor	Ken McLaughlin	
FFS Hendry Co Forest Area Sup	Joe Lecea	Helibase Manager	Matt Clinton/Mike Roof (t)	
7. Planning Section				
Chief	Dave Berens, Dave Dobbs			
Resources Unit	Melonie Sellers, E.J. Bunzendahl (t) Jessica Hollingsworth (t)			
Situation Unit	Jeff DeMatteis, Carol O'Bryan (t)			
FBAN	Gary Jarvis, Brenda Dale (t), Kelly Cagle (t)		8.	Logistics Section
Air Resource Advisor	Andrea Holland	Chief	Chris Alford, Tom Phillips (t)	
READ	Phil Wilson, JoAnne Young	Deputy	Jerry Jussila, Susan Cornett	
IMET	John Pendergrast	Supply Unit	Tom Piper	
Geo. Info. Spec.	Chris Evans, Melanie Hans, Jeff Adams (t)	Facilities Unit	Glen Bee	
Demob Unit	Jeff DeMatteis	Ground Support	Michael Howarth, Peter Lashoto, Kevin Wagner (t)	
Status Check-In	Jeff Turner	Equipment Manager		
Training	John Davis	Ordering Manager	Sherri Kite	
ITSS	Jerry Dronberger, Rusty Brown, Nikita Carty (t)	Receiving & Distrib. Mgr.	Chris Combs/Jonathan Lampley (t)	
Documentation	Bob Sobczak (t)	Base Camp Manager	Mike Justus	
10. Finance Section		Communications Unit	George Rosenthal, Ron Regan	
Chief	Wanda Kelley, Holly Cyprian (t)	Incident Communication Mgr.		
Time Unit	Laura Wilson, Sherise Foster (t)	Rado	Mark Pomponio, Federico Avakian, Brian Gieryk, Scott Brownlow	
Equipment Time Unit	Donna Line (t)	Medical Unit Leader	Gene-Paul Matson, James Fortner (t)	
Cost Unit	Carolyn Hughes, Janice Lowe (t)	Security Manager	Sasha Herrin, RJ Seehase (t)	
Comp/Claims	Terri McDonald, David Easter(t)	Security	Brian Phillips	
Procurement	Leslie Solberg			
Personnel Time Recorder	Gustavo Vallejo (t)			
Prepared by (RESL) /s/ Melonie Sellers / EJ Bunzendahl (t)/Jessica Hollingsworth (t)				



Fire Weather Forecast

FORECAST NO:	12	NAME OF FIRE:	Cowbell Fire
PREDICTION FOR:	Friday Day Shift	UNIT:	Big Cypress National Preserve
SHIFT DATE:	April 14, 2017	Incident Meteorologist:	<i>John Pendergrast</i>
FORECAST ISSUED:	1900 April 13, 2017		240-499-6649

DISCUSSION: Onshore winds will continue to keep RH values moderated due to the marine influence. Winds will pick a little more in the afternoon due to sea breeze passage. There's a chance of a shower developing late today and tonight.

TODAY (FRIDAY DAY SHIFT):

WEATHER: Partly cloudy. Breezy in the afternoon.
WIND (20 FT): Northeast 5 to 10 mph increasing to around 15 to 20 mph in the afternoon.
MAX TEMPERATURES: 84 to 87.
MIN RH: 43%.
LAL: 1 Chance measurable rain: 20%
DISPERSION: 68 MAX **MIXING HEIGHT** 5600 **TRANSPORT WINDS:** 20 mph in afternoon.

TONIGHT (FRIDAY NIGHT):

WEATHER: Increasing clouds. Isolated showers.
WIND (20 FT): Northeast 10 mph in the evening. Becoming North to Northeast 2 to 4 mph after midnight.
MIN TEMPERATURES: 62 to 65F.
MAX RH: 98 to 100%. LVORI 8 (max).
LAL: 1 Chance measurable rain: 20%.

SATURDAY:

WEATHER: Partly cloudy. Breezy in the afternoon. Isolated showers possible.
WIND (20 FT): East 7 to 10 mph early increasing to 15 to 20 mph in the afternoon.
MAX TEMPERATURES: 83 to 86F.
MIN RH: 45%.
LAL: 1 Chance measurable rain: 20%.
DISPERSION: 68 MAX **MIXING HEIGHT** 5500 **TRANSPORT WINDS** East 20 mph.

GENERAL OUTLOOK SUNDAY THROUGH TUESDAY: High Pressure over Atlantic Ocean will weaken some. Local winds will remain primarily East with a Northeast tendency at night and in mornings. No critical fire weather conditions expected. A slight chance of showers and a few storms is forecast mainly west of the fire area.

WINDS: Saturday through Monday: East 10 to 15 mph. Becoming Northeast 5 mph at night.
WEATHER/TEMPERATURE: Partly cloudy with a slight chance of showers each day. Lows in the Low 60s. Highs in the Mid 80s.
MIN RH: 40 to 45 percent each day.
NIGHT TIME RECOVERY: Near 100 percent each night.



Current Incident
area RAWs
conditions

Sunrise Friday: 7:04 am
Sunset Friday: 7:48 pm

Source: US Naval Observatory

FIRE BEHAVIOR FORECAST

FORECAST NUMBER: #11	TYPE OF FIRE: Wildland
FIRE NAME: Cowbell	OPERATIONAL PERIOD: 04/14/2017
DATE ISSUED: 04/13/2017	TIME ISSUED: 2000
UNIT: Big Cypress Preserve	WRITTEN: Brenda Dale SIGNED: Gary Jarvis FBAN

FUEL ASSUMPTIONS:

The primary fuels consist of grass, palmetto, with pine overstory, the grasses and pine litter being the most receptive to ignition. The pineland with the cabbage palmetto understory has untypically high fuel loading for the Preserve. The cypress are best described as a hardwood with a low fuel load, litter cast understory.

The fuel moisture for today is:

1 hr 7% 10 hr 13% 100 hr 17% 1000 hr 19%

Critical fire behavior thresholds: 1 HR Fuel Moisture <6%, RHs below 40% and a Dispersion Index greater than 60.

WEATHER: Partly cloudy. Breezy in the afternoon.

WIND (20 FT): Northeast 5 to 10 mph increasing to around 15 to 20 mph in the afternoon.

MAX TEMPERATURES: 84 to 87.

MIN RH: 43%.

LAL: 1 Chance measurable rain:20%

DISPERSION: 68 MAX MIXING HEIGHT 5600 TRANSPORT WINDS: 20 mph in afternoon.

General Fire Behavior Forecast: Expect all fuel models to burn even those that appear green. The cypress domes and strands typically serve as a retardant to fire growth. However, large fire runs have been propagated by spotting making cypress strands ineffective fuel breaks. 1000 hour fuels are very dry and will smolder and consume. Expect hold over heat in stump holes.

Specific:

Cowbell: Fire will actively burn on all flanks in the grass and palmetto-pineland fuels. Downwind spotting will continue to occur during burnout operations with spotting as far out as 1/3 of a mile.

Parliament and Greenup – These fires will likely continue to produce smoke and creep around in unburn green islands within the perimeter until there is a significant rain event.

Initial Attack: Despite the higher RHs, all fuels are still at very low levels and will produce high rates of spread.

PREDICTIONS FOR MOST ACTIVE TIME OF PEAK BURNING PERIOD USING WEATHER FROM INCIDENT IMET

Fuel Model	Fire Behavior
Grass	ROS-60 to 90 ch/hr and 4 to 7' Flame lengths
Shrub	ROS-15 to 35 ch/hr and 8 to 10' Flame lengths (head fire)
Timber Litter (Cypress)	ROS-4 to 10 ch/hr and 2 to 4' Flame lengths
Spotting	.3 miles
Probability of Ignition	50 %

AIR OPERATIONS: Potential for light to moderate that is expected to lift by 9am.

FIRE BEHAVIOR SAFETY: Have more than one escape route, especially in fuels that will support high rates of spread.

Division/Group Assignment List (ICS 204 WF)

1. Incident Name:			3.					
Cowbell Fire			Branch:		Division/Group			
2. Operational Period:			A					
Date/Time From: 04/14/17 0800	Date/Time To: 04/14/17 2000							
4. Operations Personnel								
AIR ATTACK SUPERVISOR				FIELD OPERATIONS		Jim Durrwachter Mike Davis (t)		
DIVISION/GROUP SUPERVISOR	Chad Cook Heath Thomas (t)			PLANNING OPERATIONS		Steve Weaver Paul Varnedoe (t)		
5. Resources Assigned this Period								
Strike Team / Task Force / Resource Designator	LWD	Leader			Number Persons	Drop Off PT./Time	Pick Up PT./Time	
MOD Great Smoky	O-102	4/18	Josh Nicholas			4	ICP/0800	ICP/2000
Seminole Suppression Buggy	E-60	4/16	Chris Kemp			2	ICP/0800	ICP/2000
SOFR	O-89	4/19	John Foley			1	ICP/0800	ICP/2000
EMTP	O-36	4/18	Frank Abel			1	ICP/0800	ICP/2000
6. Control Operations/Work Assignments:								
Task:								
<ul style="list-style-type: none"> • Patrol and mop up hot spots up to ½ chain in 								
Purpose:								
<ul style="list-style-type: none"> • To keep fire confined and contained west of ADD 17/ADD 14 on east flank of fire • To protect structures 								
End State:								
<ul style="list-style-type: none"> • Control fire perimeter west of ADD 17/ADD 14 to eliminate threat to Sanctuary area structures 								
7. Special Instructions: Establish and maintain LCES during operational period.								
8. Division/Group Communication Summary								
Function	Channel	RX Frequency N/W	RXTone/NAC	TX Frequency N/W	TX Tone/NAC	Mode		
COMMAND	12	166.6125		168.4000	110.9	A		
TACTICAL	4	168.6000		168.6000		A		
AIR TO GROUND	10	168.3250		168.3250		A		
9. Prepared By (Resource Unit Leader)			Approved By (Planning Section Chief)			Date	Time	
/s/Melonie Sellers/EJ Bunzendahl (t) /Jessica Hollingsworth (t)			Dave Berens/Dave Dobbs			04/13/17	16:00	

Division/Group Assignment List (ICS 204 WF)

1. Incident Name:		3.				
Cowbell Fire		Branch:	Division/Group			
2. Operational Period:			D			
Date/Time From: 04/14/17 0800	Date/Time To: 04/14/17 2000					
4. Operations Personnel						
AIR ATTACK SUPERVISOR		FIELD OPERATIONS	Jim Durrwachter Mike Davis (t)			
DIVISION/GROUP SUPERVISOR		PLANNING OPERATIONS	Steve Weaver Paul Varnedoe (t)			
5. Resources Assigned this Period						
Strike Team / Task Force / Resource Designator	LWD	Leader	Number Persons	Drop Off PT./Time	Pick Up PT./Time	
UNSTAFFED						
6. Control Operations/Work Assignments:						
Task:						
<ul style="list-style-type: none"> Patrol and mop up spots south of I-75 Ensure communications with FHP regarding potential smoke impacts 						
Purpose:						
<ul style="list-style-type: none"> To alert FHP of potential impact to I-75 Keep fire contained north of I-75 						
End State:						
<ul style="list-style-type: none"> Minimize risk to public traveling on I-75 Confine fire perimeter to reduce threats to resource values at risk 						
7. Special Instructions: Establish and maintain LCES during operational period. Do not engage in fire suppression activities along I-75 road shoulders unless traffic hazards have been mitigated.						
8. Division/Group Communication Summary						
Function	Channel	RX Frequency N/W	RXTone/NAC	TX Frequency N/W	TX Tone/NAC	Mode
COMMAND	13	168.7000		170.9750	110.9	A
TACTICAL	8	166.7500		166.7500		A
AIR TO GROUND	10	168.3250		168.3250		A
9. Prepared By (Resource Unit Leader)		Approved By (Planning Section Chief)		Date	Time	
/s/Melonie Sellers/EJ Bunzendahl (t) /Jessica Hollingsworth (t)		Dave Berens/Dave Dobbs		04/13/17	16:00	

Division/Group Assignment List (ICS 204 WF)

1. Incident Name:			3.				
Cowbell Fire			Branch:		Division/Group		
2. Operational Period:							
Date/Time From: 04/14/17 0800		Date/Time To: 04/14/17 2000		G			
4. Operations Personnel							
AIR ATTACK SUPERVISOR				FIELD OPERATIONS		Jim Durrwachter Mike Davis (t)	
DIVISION/GROUP SUPERVISOR		Chuck Alluisi Mike Honeycutt (t)		PLANNING OPERATIONS		Steve Weaver Paul Varnedoe (t)	
5. Resources Assigned this Period							
Strike Team / Task Force / Resource Designator		LWD	Leader		Number Persons	Drop Off PT./Time	Pick Up PT./Time
ENG 6 Firetrax E-86		4/19	Carlos Gutierrez		3	ICP/0800	ICP/2000
ENG 6 Wildlands Fire Service E-87		4/19	Brian Terry		3	ICP/0800	ICP/2000
ENG6 Wildlands Fire Service E-121		4/25	David Hogrefe		3	ICP/0800	ICP/2000
Slimer Suppression Buggy E-80		4/15	Matt Mateo		3	ICP/0800	ICP/2000
BICY Suppression Buggy #3 E-65		4/15	Blake Shaw		1	ICP/0800	ICP/2000
Duece Buggy IA #607 E-89		4/23	Conner Boudin		2	ICP/0800	ICP/2000
Masticator E-6		4/17	Mike Joel		1	ICP/0800	ICP/2000
HEQB O-25		4/16	Eric Moore		1	ICP/0800	ICP/2000
SOFR O-63		4/19	David Dallison		1	ICP/0800	ICP/2000
READ O-33		4/18	Phil Wilson		1	ICP/0800	ICP/2000
FOBS O-24		4/19	Gabe Gamino		1	ICP/0800	ICP/2000
FOBS (t) O-84		Local	Mindy Wright		1	ICP/0800	ICP/2000
EMTF O-17		4/15	Jim Stout		1	ICP/0800	ICP/2000
6. Control Operations/Work Assignments:							
Task: <ul style="list-style-type: none"> Patrol and conduct mop up, as appropriate Continue strategic firing operations on Nobles Grade Masticate along Bundschu Grade Coordinate firing with DIV Z as needed Continue monitoring and using aerial support to contain slopover on Nobles Grade 							
Purpose: <ul style="list-style-type: none"> To keep fire contained east of Nobles Grade To establish a contingency line 							
End State: <ul style="list-style-type: none"> Confine fire perimeter to reduce threats to resource values at risk 							
7. Special Instructions: Establish and maintain LCES during operational period. Coordinate with Field OPS in the event swing shift resources are required. Utilize MIST tactics as outlined in Fire Operations Guide for BICY. Follow tracked vehicle requirement restrictions.							
8. Division/Group Communication Summary							
Function	Channel	RX Frequency N/W	RXTone/NAC	TX Frequency N/W	TX Tone/NAC	Mode	
COMMAND	15	173.0375		167.3250	110.9	A	
TACTICAL	5	168.2500		168.2500		A	
AIR TO GROUND	10	168.3250		168.3250		A	
9. Prepared By (Resource Unit Leader)			Approved By (Planning Section Chief)			Date	Time
/s/Melonie Sellers/EJ Bunzendahl (t) /Jessica Hollingsworth (t)			Dave Berens/Dave Dobbs			04/13/17	16:00

Division/Group Assignment List (ICS 204 WF)

1. Incident Name:				3.			
Cowbell Fire				Branch:		Division/Group	
2. Operational Period:				Z			
Date/Time From: 04/14/17 0800		Date/Time To: 04/14/17 2000					
4. Operations Personnel							
AIR ATTACK SUPERVISOR			FIELD OPERATIONS			Jim Durrwachter Mike Davis (t)	
DIVISION/GROUP SUPERVISOR			Tom Crews, Micah Johnson Chris Richards (t)			PLANNING OPERATIONS Steve Weaver Paul Varnedoe (t)	
5. Resources Assigned this Period							
Strike Team / Task Force / Resource Designator		LWD	Leader		Number Persons	Drop Off PT./Time	Pick Up PT./Time
HC1 Asheville	C-6	4/18	Allen Mitchell		18	ICP/0800	ICP/2000
TFLD	O-61	4/19	Mario Marquez		1	ICP/0800	ICP/2000
MOD Buffalo	O-21	4/16	Josh Hampton		6	ICP/0800	ICP/2000
ENG3 #51	E-99	4/19	Mike Anderson		5	ICP/0800	ICP/2000
ENG3 #335	E-100	4/19	Zach McGarr		5	ICP/0800	ICP/2000
Masticator GEO-BOY	E-83	4/24	Rob Shackelford		1	ICP/0800	ICP/2000
HEQB	O-124	4/24	Jesse Barr		1	ICP/0800	ICP/2000
Seminole Tractor w/Harrow	E-61	Local	Jeff Radakovic		1	ICP/0800	ICP/2000
Transport Buggy	E-38	4/15	Clint Weeks		1	ICP/0800	ICP/2000
Transport Buggy	E-39	4/15	Captain Steve-Clinton Weaks		1	ICP/0800	ICP/2000
Transport Buggy	E-40	4/15	Bobby Weeks		1	ICP/0800	ICP/2000
Transport Buggy	E-41	4/15	Victor Robinson		1	ICP/0800	ICP/2000
SOFR	O-38	4/16	Joe Fowler		1	ICP/0800	ICP/2000
READ	O-154	4/25	JoAnne Young		1	ICP/0800	ICP/2000
EMTF	O-15	4/16	Matt Lancaster		1	ICP/0800	ICP/2000
6. Control Operations/Work Assignments:							
Task:							
<ul style="list-style-type: none"> • Patrol and conduct mop up, as appropriate • Conduct strategic firing operations on property boundary • Continue mastication for line improvement 							
Purpose:							
<ul style="list-style-type: none"> • To keep fire south of Preserve Boundary and west of ADD 17 to protect private land with structures 							
End State:							
<ul style="list-style-type: none"> • Control fire perimeter south and east of ADD 17 to eliminate threat to Seminole Tribe of Florida and Ceremonial Area 							
7. Special Instructions: Establish and maintain LCES during operational period. Coordinate with Field OPS in the event swing shift resources are required. Follow tracked vehicle restriction requirements. Utilize MIST tactics as outlined in Fire Operations Guide for BICY.							
8. Division/Group Communication Summary							
Function	Channel	RX Frequency N/W	RXTone/NAC	TX Frequency N/W	TX Tone/NAC	Mode	
COMMAND	12	166.6125		168.4000	110.9	A	
TACTICAL	8	166.7500		166.7500		A	
AIR TO GROUND	10	168.3250		168.3250		A	
9. Prepared By (Resource Unit Leader)			Approved By (Planning Section Chief)			Date	Time
/s/Melonie Sellers/EJ Bunzendahl (t) /Jessica Hollingsworth (t)			Dave Berens/Dave Dobbs			04/13/17	16:00

Division/Group Assignment List (ICS 204 WF)

1. Incident Name:		3.				
Cowbell Fire		Branch:	Division/Group			
2. Operational Period:		IA				
Date/Time From: 04/14/17 0800	Date/Time To: 04/14/17 2000					
4. Operations Personnel						
AIR ATTACK SUPERVISOR			FIELD OPERATIONS Jim Durrwachter/Mike Davis (t)			
DIVISION/GROUP SUPERVISOR	Kris Croddy	PLANNING OPERATIONS	Steve Weaver Paul Varnedoe (t)			
5. Resources Assigned this Period						
Strike Team / Task Force / Resource Designator	LWD	Leader	Number Persons	Drop Off PT./Time	Pick Up PT./Time	
TFLD ** O-60	4/19	Harold Kibbe	1	ICP/0800	ICP/2000	
TFLD O-144	4/24	Willard Worley	1	ICP/0800	ICP/2000	
MOD EE O-67	4/18	Matt Britt	8	ICP/0800	ICP/2000	
ENG3 #321 E-98	4/19	Kenneth Vaughn	5	ICP/0800	ICP/2000	
ENG6 Big Thickett ** E-57	4/19	Gus Schaefer	2	ICP/0800	ICP/2000	
ENG6 K31 ** E-7	4/15	Steven Staples	2	ICP/0800	ICP/2000	
ENG6 Attack One E-58	4/19	Kevin Carter	2	ICP/0800	ICP/2000	
ENG6 CSP661 E-59	4/20	Jason Johnson	2	ICP/0800	ICP/2000	
ENG6 Wildlands Fire Service E-122	4/25	Chad Anderson	3	ICP/0800	ICP/2000	
ENG6 WFS E-8	4/16	Dave Sechrist	3	ICP/0800	ICP/2000	
ENG6 WFS E-9	4/16	Saul Irvin	3	ICP/0800	ICP/2000	
ENG6 Attack One E-10	4/16	Wes Coleman	2	ICP/0800	ICP/2000	
BICY Suppression Buggy #2 E-64	4/23	Chris Dargan	3	ICP/0800	ICP/2000	
BICY Suppression Buggy #6 E-68	4/22	James Ray **	1	ICP/0800	ICP/2000	
SOFR O-135	4/25	Donald Foco	1	ICP/0800	ICP/2000	
EMTF O-18	4/15	Bob Bruington	1	ICP/0800	ICP/2000	
6. Control Operations/Work Assignments:						
Task: <ul style="list-style-type: none"> Coordinate with BICY duty officer for notification of newly reported ignitions Coordinate initial attack action with assigned aviation and /or ground assets Determine IA resource prepositioning needs across BICY and FPWR Purpose: <ul style="list-style-type: none"> Ensure communications with FL Hwy Patrol regarding smoke on I-75 and Hwy 41 Ensure timely response on any IA within BICY and FPWR End State: <ul style="list-style-type: none"> Protect human life Minimize environment damage to protect habitat of threatened and endangered species Minimize damage to public and private property 						
7. Special Instructions: **Resources identified for swing shift if needed. Coordinate with Field OPS to determine need. Follow tracked vehicle requirement restrictions. Establish and maintain LCES during operational period. Utilize MIST tactics as outlined in Fire Operations Guide for BICY.						
8. Division/Group Communication Summary						
Function	Channel	RX Frequency N/W	RX Tone/NAC	TX Frequency N/W	TX Tone/NAC	Mode
COMMAND	1	172.4250	1035	170.1000	1035	D
COMMAND	2	172.4250	1035	171.6250	1035	D
COMMAND	7	164.6250	1188	163.1500	1188	D
TACTICAL	9	166.8250		166.8250		A
AIR TO GROUND	6	169.1125		169.1125		A
9. Prepared By (Resource Unit Leader)		Approved By (Planning Section Chief)		Date	Time	
/s/Melonie Sellers/EJ Bunzendahl (t) /Jessica Hollingsworth (t)		Dave Berens/Dave Dobbs		04/13/17	16:00	

Division/Group Assignment List (ICS 204 WF)

1. Incident Name:		3.				
Cowbell Fire		Branch:	Division/Group Parliament/ Misc. Fire Patrol			
2. Operational Period:						
Date/Time From: 04/14/17 0800	Date/Time To: 04/14/17 2000					
4. Operations Personnel						
AIR ATTACK SUPERVISOR		FIELD OPERATIONS	Jim Durrwachter Mike Davis (t)			
DIVISION/GROUP SUPERVISOR		PLANNING OPERATIONS	Steve Weaver Paul Varnedoe (t)			
5. Resources Assigned this Period						
Strike Team / Task Force / Resource Designator	LWD	Leader	Number Persons	Drop Off PT./Time	Pick Up PT./Time	
UNSTAFFED						
6. Control Operations/Work Assignments:						
Task:						
<ul style="list-style-type: none"> Patrol and monitor fires on BICY and FPWR with aviation and ground assets as directed by lead OSC commensurate with values at risk Monitor fires for further suppression management action 						
Purpose:						
<ul style="list-style-type: none"> Assure suppression action taken limits environmental impact, consistent with MIST tactics 						
End State:						
<ul style="list-style-type: none"> Protect human life Minimize damage to public and private property Minimize environmental damage to protect habitat of threatened and endangered species 						
7. Special Instructions: Follow tracked vehicle requirement restrictions. Establish and maintain LCES during operational period. Utilize MIST tactics as outlined in Fire Operations Guide for BICY.						
8. Division/Group Communication Summary						
Function	Channel	RX Frequency N/W	RXTone/NAC	TX Frequency N/W	TX Tone/NAC	Mode
COMMAND	7	164.6250	1188	163.1500	1188	D
TACTICAL	11	166.7250	0659	166.7250	0659	D
AIR TO GROUND	10	168.3250		168.3250		A
9. Prepared By (Resource Unit Leader)		Approved By (Planning Section Chief)		Date	Time	
/s/Melonie Sellers/EJ Bunzendahl (t) /Jessica Hollingsworth (t)		Dave Berens/Dave Dobbs		04/13/17	16:00	

Division/Group Assignment List (ICS 204 WF)

1. Incident Name:			3.				
Cowbell Fire			Branch:		Division/Group Structure Protection Group		
2. Operational Period:							
Date/Time From: 04/14/17 0800		Date/Time To: 04/14/17 2000					
4. Operations Personnel							
AIR ATTACK SUPERVISOR				FIELD OPERATIONS		Jim Durrwachter Mike Davis (t)	
DIVISION/GROUP SUPERVISOR		Ryan Vice		PLANNING OPERATIONS		Steve Weaver Paul Varnedoe (t)	
5. Resources Assigned this Period							
Strike Team / Task Force / Resource Designator		LWD	Leader		Number Persons	Drop Off PT./Time	Pick Up PT./Time
TFLD	O-106.1	4/16	Wes Richardson		1	ICP/0800	ICP/2000
TFLD (t)	O-106.3	4/16	Darren Gunn		1	ICP/0800	ICP/2000
MOD BIFZ #2	O-106	4/16	Brett Morefield		8	ICP/0800	ICP/2000
FOBS	O-22	4/16	Ron Rockis		1	ICP/0800	ICP/2000
FOBS	O-23	4/16	Luke Hurley		1	ICP/0800	ICP/2000
EMTF	O-16	4/15	Tracey Milakovic		1	ICP/0800	ICP/2000
6. Control Operations/Work Assignments:							
Task:							
<ul style="list-style-type: none"> Backhaul all structure protection equipment and supplies 							
Purpose:							
<ul style="list-style-type: none"> To remove all fire suppression related supplies 							
End State:							
<ul style="list-style-type: none"> Minimize impact to local residents 							
7. Special Instructions: Establish and maintain LCES during operational period.							
8. Division/Group Communication Summary							
Function	Channel	RX Frequency N/W	RXTone/NAC	TX Frequency N/W	TX Tone/NAC	Mode	
COMMAND	13	168.7000		170.9750	110.9	A	
COMMAND	12	166.6125		168.4000	110.9	A	
TACTICAL	11	166.7250	0659	166.7250	0659	D	
AIR TO GROUND	10	168.3250		168.3250		A	
9. Prepared By (Resource Unit Leader)		Approved By (Planning Section Chief)			Date	Time	
/s/Melonie Sellers/EJ Bunzendahl (t) /Jessica Hollingsworth (t)		Dave Berens/Dave Dobbs			04/13/17	16:00	

AIR OPERATIONS SUMMARY

OPERATIONAL PERIOD DATE: 04-14-2017

0900-2000

1. INCIDENT NAME: Cowbell	2. PREPARED BY: Mike Rock	PREPARED DATE/TIME: 04/13/2017 1730	3. Sunrise: 0704 Sunset: 1948
4. REMARKS (Safety Notes, Hazards, Air Operations Special Equipment,, etc.): Medivac Aircraft: 6HX MTR- Located along state road 29.Fire Dispatch gets MTR activity every morning Do not over fly structures with external load missions. All aircraft should use strobes and running lights in smoky conditions. Hazards: Snags, non-incident aircraft, and winds. Contract helicopter working special use permit in North Central portion of BICY. Area identified on pilot briefing board. ATGS has air to air communications.			5. Squawk 1255 TFR—7/7786 ZMA FL, Airspace 25 nm NE of Ochopee SFC 3000ft. NOTAM – 04/054 – Airspace firefighting aircraft 5nm of (9FL7) SFC 2000ft.

6. PERSONNEL	Phone	7. FREQUENCIES	AM	FM	8. FIXEDWING	Base
AOBD: Mike Rock ASGS: Pete Kubiak ASGS(T) Mike O’Leary	606-813-9750 404-661-4819 239-336-9789	Air/Air Rotor	123.575			
		Air/Air Fixed Wing	118.825		Air Attack- Air Attack	197GB – Aero Commander MKY 4566M Baron MKY
ATGS: Ken McLaughlin ATGS – James Gresham	813-997-0317 208-660-4139	Air/Ground Cowbell		168.3250 RX/TX (A) 169.1125 RX/TX (A) 167.9500 RX/TX (A)	T-801 T-493	Seat –IMM, Start 0900 Seat —IMM, Start 0900
<u>Oasis Helibase (9FL7)</u> HEB1 Matt Clinton HEB2-T Jay Thatcher <u>Immokalee Airport</u> Seat Manager – Jack Benzilio HMGB Connie Fox HEB2 – Tracy Elliott	239-695-0278 208-634-9414 970-903-7922			169.7250 RX N1514 163.3875 TX N1738		
Big Cypress Fire Dispatch	239-695-9280 x 104	Air/Guard Deck		168.6250 RX/TX Tone 110.9 166.7750		

9. HELICOPTERS (Use Additional Sheets As Necessary)

FAA N# or Designator	TY	MAKE/MODEL	BASE	START	REMARKS	FAA N# or Designator	TY	MAKE/MODEL	BASE	START	REMARKS
206RW	3	Bell 206	Oasis	0900	Recon/Bucket	1KA	1	K-MAX	Oasis	0900	Bucket
0HH	3	Bell 206	Oasis/RON-Miami	0900	Recon / Bucket	612CK	1	S-61	IMM	0900	Tanked
28HX	2	205A1	Oasis	0900	Crew/Bucket	718	1	CH-54	IMM	0900	Tanked
6HX	2	Bell 205	Oasis	0900	Crew/Bucket						

10. TASK/MISSION/ASSIGNMENT (Use ICS-220a if additional space needed; Type/Function includes: Air Tactical, Retardant, Recon, Personnel Transport, Water Dropping, etc.)

TYPE/FUNCTION	NAME OF PERSONNEL OR CARGO (if applicable) OR INSTRUCTIONS FOR TACTICAL AIRCRAFT	MISSION START	FLY FROM	FLY TO
Mapping	As Requested	0930		
Reconnaissance	As Requested	0930		

HEALTH AND SAFETY MESSAGE

SAFETY starts with *YOU*

We are ALL accountable for SAFE behaviors

INCIDENT: **Cowbell Fire & IA** | DATE: April 14, 2017 | TIME: 0800-2000

Major Hazards and Risks:

DRIVING COMPLACENCY WEATHER

COMPLACENCY –

Don't become complacent, and let your guard down just because we had a little rain. Where you come from a half inch to one inch of rain may virtually put an end to a fire, but not here in Florida. With Florida's ongoing drought conditions, sandy soils and highly volatile fuels, expect fire behavior to change within hours, not days.

Don't let your guard down. We are still going to have hazards and risks such as ingress and egress by vehicles, UTV's and buggies. Cowbell is one of the larger ongoing fires in Florida right now and is getting a lot of media coverage. Keep an eye out for individuals (public and news) who have slipped in wanting to see what is going on. Maintain your situational awareness and don't let something fall through the cracks



18. TAKING A NAP NEAR THE FIRELINE



Wildlife on the move!

DRIVING :

Due to the daytime heat, water sources drying up and our fire, wildlife movement is becoming more and more nocturnal.

While the heat of the day restricts wildlife movement, the cooler evenings, nights and mornings promote it. More and more animals are being seen hit by motorized vehicles, especially on narrower two lane roads due to this movement. Just a couple of days ago a small bear cub was hit on one of these two lane roads.

So, watch your speed and watch out for wildlife which may be trying cross our roads.

Incident Safety Officers:

Ken Gordon (T), Mark Sullivan, Buddy Kelley, Joe Fowler, David Dallison & John Foley

Incident Safety Analysis 215a

Cowbell & Initial Attack

Friday April 14, 2017

8. Location	9. Hazard	6. Control or Abatement Action (Engineering, Administrative, PPE, Avoidance, Education, etc)
DIVS ALL / IA	Helicopter Operations	<ul style="list-style-type: none"> ~ Stay clear of all bucket drops when suppression actions are in place and allow 1 minute prior to re-entry. ~ Monitor Air-Ground AG communications. ~ Follow aviation safety guidelines in IRPG and IHOG.
DIVS ALL / IA	Hazard Trees	<ul style="list-style-type: none"> ~ Avoid cutting Hazard Trees, unless they are an obvious Safety Hazard to crews in the vicinity (Reference the "Big Cypress National Preserve - Wildfire Incident Resource Protection Plan") ~ Follow "Hazard Tree Safety" guidelines, IRPG page 22. ~ Post lookouts, or use a spotter in mop-up areas. ~ Don't park vehicles or take breaks around hazard trees. ~ Establish trigger points for disengagement during high wind events. ~ Remember that the hazard zone extends a minimum of 2 1/2 tree heights.
DIVS ALL / IA	Extreme Fire Behavior	<ul style="list-style-type: none"> ~ Share weather observations with all personnel assigned to division. ~ Establish "Trigger Points" to withdraw. ~ Use "Risk Management" process prior to engaging in suppression actions, refer to page 1, IRPG.
DIVS ALL / IA	Injury & Medical Emergency	<ul style="list-style-type: none"> ~ For Medical Incident, follow the 9 line procedures. ~ For "air hoist capability" or "snake bite treatment" contact Radio call sign '784' to request assistance. ~ Assist injured employee with appropriate medical care. ~ Use EMT's on Division for initial care. ~ Follow medical protocol as outlined in ICS-206 & IRPG Pgs. 99-108
DIVS ALL / IA	Driving & Traffic	<ul style="list-style-type: none"> ~ Practice "Defensive Driving" techniques traveling on all roads and city streets. ~ Do not drive by helicopters dipping out of canal on the L - 28 road. ~ Use spotters when backing ~ Keep clutter off dash and inside cab. ~ Follow Driving LCES (Lights, Chock blocks, Emergency brake, Seat belts. ~ Always use headlights when on dusty roads. ~ Yield to pedestrians and bicycles. ~ Observe posted speed limits. ~ Use the 3 second rule for following distance when driving. ~ Avoid distractions (eating, cell phones, radio). ~ Ensure that windshields are kept clean of dust and bugs. ~ Do not engage in fire suppression activities along Interstate 75 road shoulders. ~ If traffic flow is affected by incident, contact the law enforcement agency that has jurisdiction for assistance.
DIVS A & Z	Structure Protection & HAZMAT	<ul style="list-style-type: none"> ~ Review Watch outs, IRPG page 12. Do Not commit to stay and protect a structure if trigger points are reached. ~ Use "Structure Assessment" checklist, IRPG pages 12-16. ~ No safety zones are present, set trigger point to safe retreat. ~ Patrol after passage of the fire front when safe. ~ Follow "HAZMAT on pages 34-36 in IRPG.
DIVS ALL / IA	Chain Saw Operations	<ul style="list-style-type: none"> ~ Follow "Hazard Tree Safety" guidelines, IRPG page 22 ~ Look up, Look down, Look around for hazard tree indicators. ~ Only fell and buck trees within your qualifications, and training. ~ Follow "Procedural Felling Operations" on page 79 in IRPG. ~ Do not fall trees during high wind events. ~ Ensure proper use of all required PPE.
DIVS ALL / IA	Unburned Area/Reburn Potential	<ul style="list-style-type: none"> ~ Monitor weather. ~ Base actions upon observed and predicted fire behavior. ~ LCES Checklist (IRPG pg. 6). ~ Look Up, Down and Around (IRPG pg. 2-3).

Incident Safety Analysis 215a

Cowbell & Initial Attack

Friday April 14, 2017

DIVS ALL	Power Utilities	<ul style="list-style-type: none"> ~ Notify all personnel of down electrical lines. ~ Refer to the IRPG page 24 for Power Line Safety. ~ Always treat downed wires as energized. ~ Identify and avoid high tension transmission lines. ~ Identify and avoid high pressure natural gas lines. ~ Identify and avoid damaged gas service near structures. ~ Be aware of utility restoration in your work area.
DIVS ALL / IA	Vehicle Operations in Inclement Weather	<ul style="list-style-type: none"> ~ Be alert for potential muddy and slick road surfaces. ~ Avoid parking on soft shoulders along roads. ~ Stay off secondary roads in wet conditions. ~ Increase following distance on slick road surfaces. ~ Send a scout to evaluate roads and work area prior to personnel engagement.
DIVS ALL / IA	Firing Operations & Devices	<ul style="list-style-type: none"> ~ Only personnel trained in the use of each device will be authorized to use firing equipment. ~ Ensure all personnel are aware of firing operations that may affect them. ~ Wear appropriate PPE. ~ Ensure aerial/ground ignition plans have been adequately developed and personnel are briefed.
DIVS ALL / IA	Fatigue & Over Exertion	<ul style="list-style-type: none"> ~ Drink 1 quart of water each hour during and after work. ~ Rotate crews out of smoky areas. ~ Set a reasonable work pace and allow adequate rest breaks while on the project. ~ Use buddy system to monitor personnel of heat related and fatigue issues. ~ Follow work / rest guidelines.
DIVS All / IA	Swamp Buggy	<ul style="list-style-type: none"> ~ Ensure equipment is inspected and safe to use ~ Restrict Buggy use to established trails ~ Ensure operator is trained and certified to operate ~ Ensure operator has proper PPE ~ Passengers wear hardhats & use 3 points of contact when loading or unloading ~ Secure all seating so that it is stable and does not move
DIVS A / Z / G	Heavy Equipment Operations	<ul style="list-style-type: none"> ~ Ensure communications are established with operators. ~ Use hand signals if other communications are unavailable. ~ Maintain a 100'- 200' exclusion area around equipment and increase it to 1 1/2 times tree height when in timber. ~ Use a spotter when backing.
DIVS ALL / IA	Communications	<ul style="list-style-type: none"> ~ Maintain communication with aviation resources, and suppression organization. ~ Ensure all know frequency and protocol for contacting resources. ~ Utilize the ICS 205. ~ Utilize human repeaters when working in dead spots.
DIVS ALL / IA	Wildlife	<ul style="list-style-type: none"> ~ Watch out for wildlife such as alligators, bear, deer, panthers, snakes ~ Do not feed, handle or taunt wildlife ~ Maintain safe distance and avoid contact ~ Discard trash (food and containers) in proper disposal sites ~ Secure pump location sites, watch for alligators, snakes and other wildlife
DIVS ALL / IA	Firefighter & Public Smoke Exposure	<ul style="list-style-type: none"> ~ Identify homes and structures with private parties remaining behind the evacuation. ~ Identify personnel responsible for contacting private parties. ~ Use warning lights and provide traffic control on roadways during smoky and night operations. ~ Rotate crews out of smoky areas during firing and mop-up operations. ~ Contact Communications when firing operations are initiated.
DIVS ALL / IA	UTV use	<ul style="list-style-type: none"> ~ Ensure equipment is inspected and safe to use. ~ Restrict UTV use to established trails ~ Ensure operator is trained and certified to operate. ~ Ensure operator has proper PPE according to the Redbook and/or RMA. ~ Question if it is mission critical.
DIVS ALL / IA	Unplanned Public Interaction	<ul style="list-style-type: none"> ~ Be alert to non-fire personnel.~ All non-fire personnel will be escorted while on fireline. ~ Post lookouts to in areas with public to avoid conflicts with mission tasks. ~ Ensure sufficient security to restrict access to exclusion area.

MEDICAL PLAN (ICS 206)

1. Incident Name: Cowbell Fire		2. Operational Period: Date From: 04-14-17 Date To: 04-14-17 Time From: 0800 Time To: 2000					
3. Medical Aid Stations:							
Name	Location	Contact Number(s)/Frequency	Paramedics on Site?				
Gene-Paul Matson EMTF, MEDL	Medical ICP	434-665-0444	<input checked="" type="checkbox"/> Yes	<input type="checkbox"/> No			
James Fortner EMTF, MEDL T	Medical ICP	202-236-3139	<input type="checkbox"/> Yes	<input checked="" type="checkbox"/> No			
Tracy Milakovic	Structure Protection Group	719-850-0022	<input type="checkbox"/> Yes	<input checked="" type="checkbox"/> No			
Frank Abel	Division A	423-595-1578	<input checked="" type="checkbox"/> Yes	<input type="checkbox"/> No			
Jim Stout	Division G	480-296-1566	<input checked="" type="checkbox"/> Yes	<input type="checkbox"/> No			
Bob Bruington	IA	801-782-3585	<input type="checkbox"/> Yes	<input checked="" type="checkbox"/> No			
Matt Lancaster	Division Z	303-870-5248	<input type="checkbox"/> Yes	<input checked="" type="checkbox"/> No			
4. Transportation (indicate air or ground):							
Ambulance Service	Location	Contact Number(s)/Frequency	Level of Service				
Collier County EMS (ground)	Everglades City (Medic 61)	911	<input checked="" type="checkbox"/> ALS	<input type="checkbox"/> BLS			
Collier County Med-Flight (air)	Naples Airport	911	<input checked="" type="checkbox"/> ALS	<input type="checkbox"/> BLS			
6HX Bell 205 (air) medical evacuation	Oasis Heli-base	168.3250 (A/G 85)	<input type="checkbox"/> ALS	<input checked="" type="checkbox"/> BLS			
5. Hospitals:							
Hospital Name	Address	Contact Number(s)	Travel Time		Trauma Center	Burn Center	Helipad
			Air	Ground			
Physicians Regional Collier Blvd	8300 Collier Blvd. Naples, FL 34114 Lat:26°6.313'/Long: -81°41.106'	239-354-6000 (Main) 239-354-6190 (ER)	15	50	<input type="checkbox"/> Yes Level: _____	<input type="checkbox"/> Yes <input checked="" type="checkbox"/> No	<input checked="" type="checkbox"/> Yes <input type="checkbox"/> No
Physicians Regional Pine Ridge	6101 Pine Ridge Road, Naples 34119 Lat:26°12.833'/Long: -81°43.954'	239-348-4000 (Main) 239-304-4748 (ER)	15	50	<input type="checkbox"/> Yes Level: _____	<input type="checkbox"/> Yes <input checked="" type="checkbox"/> No	<input checked="" type="checkbox"/> Yes <input type="checkbox"/> No
Naples Community Hospital	350 7 th Street North, Naples 34102 Lat:26°9.046'/Long: -81°47.907'	239-513-7709 (Main) 239-436-5151 (ER)	15	60	<input checked="" type="checkbox"/> Yes Level: <u>2</u>	<input type="checkbox"/> Yes <input checked="" type="checkbox"/> No	<input checked="" type="checkbox"/> Yes <input type="checkbox"/> No
Jackson Memorial Hospital	1611 NW 12 Avenue, Miami Lat:25°47.508'/Long: -80°12.756'	305-585-1111 (Main) 305-585-6910 (ER)	20	60	<input checked="" type="checkbox"/> Yes Level: <u>1</u>	<input checked="" type="checkbox"/> Yes <input type="checkbox"/> No	<input checked="" type="checkbox"/> Yes <input type="checkbox"/> No
Kendal Regional Medical Center	11750 SW 40 th St., Miami 33175 Lat:25°43.916'/Long: -80°23.148'	305-223-3000 (Main) 305-227-5544 (ER)	20	50	<input checked="" type="checkbox"/> Yes Level: <u>1</u>	<input type="checkbox"/> Yes <input checked="" type="checkbox"/> No	<input checked="" type="checkbox"/> Yes <input type="checkbox"/> No
6. Special Medical Emergency Procedures:							
<ul style="list-style-type: none"> • Patient or nearest responder notifies Group Supervisor who will respond to the scene and become the "incident within an incident" (IWI) commander. • Group Supervisor will notify nearest medical responder and ICP-Communications of the incident and "Nine Line" report attached to the back of this IAP or page 108 of the IRPG. <p>Call "784" (Emergency & Law Enforcement) Everglades Communications on the Oasis or Carns Repeater, or by phone at 1-800-788-0511 if it is determined that a pre-hospital medevac care, air hoist capability or snake bite treatment is required. MedFlight located at Naples Municipal Airport will be used for pre-hospital medevac care. Miami-Dade Fire Rescue (MDFR) Air Rescue Bureau will be used for air hoist rescue and also for snake bite treatment. Everglades Communications will advise the 911 dispatcher for Collier or Dade County for their helicopter to communicate through the Incident's Air/Ground frequency.</p> <p>Note: If possible, give coordinates in aviation format – Degrees Decimal Minutes</p> <p><input type="checkbox"/> Check box if aviation assets are utilized for rescue. If assets are used, coordinate with Air Operations.</p>							
7. Prepared by (Medical Unit Leader): Name: <u>Gene-Paul Matson/James P. Fortner(T)</u> Signature: <u>/s/ James P. Fortner</u>							
8. Approved by (Safety Officer): Name: <u>Ken Gordon</u> Signature: <u>/s/ Kenneth R. Gordon</u>							
ICS 206		IAP Page _____		Date/Time: <u>04/12/2017</u>			

INCIDENT RADIO COMMUNICATIONS PLAN (ICS 205)

3. Operational Period: DAY									
Date/Time From: 04/14/2017 0800			Date/Time To: 04/14/2017 2000						
Zone Group	Ch #	Function	Assignment	RX Freq	RX Tone/NAC	TX Freq	TX Tone/NAC	Mode (A,D, or M)	Remarks
	1	CARNS RPT	Initial Attack	172.4250	1035	170.1000	1035	D	Talk Group 1
	2	OASIS RPT	Initial Attack	172.4250	1035	171.6250	1035	D	Talk Group 1
	3	BCY LCL		166.7750	No Tone	166.7750	No Tone	A	
	4	BICY TAC 1	Division A	168.6000	No Tone	168.6000	No Tone	A	
	5	BICY LCL 2	DIVISION G	168.2500	No Tone	168.2500	No Tone	A	
	6	A/G 59	Initial Attack	169.1125	No Tone	169.1125	No Tone	A	
	7	Panther RPT	Initial Attack Parliament	164.6250	1188	163.1500	1188	D	Talk Group 1
	8	PANTHER TAC 1	DIVISION D/Z	166.7500	No Tone	166.7500	No Tone	A	
	9	PANTHER TAC 2	Initial Attack	166.8250	No Tone	166.8250	No Tone	A	
	10	A/G 85	ALL DIVISIONS	168.3250	No Tone	168.3250	No Tone	A	
	11	Everglades TAC 1	Structure Protection / Parliament Misc.	166.7250	0659	166.7250	0659	D	
	12	CMD 12	DIVISION A/Z Structure	166.6125	No Tone	168.4000	110.9	A	
	13	CMD 13	DIVISION D /Structure	168.7000	No Tone	170.9750	110.9	A	
	14	A/G	Aerial Ignition	167.9500	No Tone	167.9500	No Tone	A	
	15	CMD 15	DIV G	173.0375	No Tone	167.3250	110.9	A	
	16	AIR GUARD		168.6250	No Tone	168.6250	110.9	A	
Name: GEORGE ROSENTHAL				Signature: /s/ George Rosenthal					
				Date/Time: 04/13/2017 1600					

TRAINING MESSAGE

APRIL 14

Elements of IQCS Position Qualification

Trainees: To attain that “Q”, you must satisfactorily complete.....

(see your agency’s qualification guide, e.g. PMS-310-1, for definitions and individual position descriptions)

- Required training,
- Recurrent training, if any,
- Required experience,
- Physical fitness requirement, if any,
- Currency (aviation, dispatch, faller [3 yrs]; all others [5 yrs]),
- The human factor – both you and your home unit certifying official accept your readiness for certification, and
- Your local quals committee (if you have one) and your certifying official approve and properly document the decision.

Cheers and Sincere Congratulations! You are now a _____!

But remember – every day is (and always will be) a training day...

John Davis, TNSP

Recycling Guidelines

What is Allowed	What is not Allowed
Plastic #1 through #7, aluminum, and steel cans	Window glass, ceramics, light bulbs
Clear, Brown, and Green Glass	Automotive fluids, paint, cleaning products
Cardboard	Batteries
Paper, magazines, phone books	No food contaminated paper
<ul style="list-style-type: none">• Break down all cardboard boxes• Empty all liquids and food products	



To: All Incident Personnel, Cowbell Fire

As Southern Area Type II Incident Commander, I am committed to a policy of “zero tolerance” of inappropriate behavior during incident operations. Any form of harassment, discriminatory practices, or disrespectful behavior will not be tolerated. Known or reported acts will be dealt with appropriately.

I am particularly concerned about the perception that alcohol has a place in any of the Incident facilities. It is not appropriate to indulge in alcoholic beverages during any fire assignment.

The Teams from the Southern Region have a team expectation of “NO ALCOHOL” from the time of dispatch until the time of physical release from the Incident. Members of the Team voluntarily comply with this expectation; all incident personnel will be expected to do so also.

We endorse, support, and expect an attitude of mutual respect for all Incident personnel and the public we serve. We also, endorse the attitude and work ethic that places “Safety First, every time on every Incident.” We expect nothing less.

/s/ Steve Parrish
Incident Commander
Southern Area Gold Team

Finance Notes, 4/13/17

Please put your E# on your shift tickets.

Demobing soon? Please stop in to finance for a pulse check.

VIPR contractors: Bring us your lodging information, if you haven't already done so. This will ensure that your demob process is less painful. 😊

Following resources – See Finance

E-122 ENG6 Wildland Fire Services Need copy of contract and inspection

O-144 TFLD Worley, Willard Unsigned CTR

Demob Message

All personnel should be in contact with their incident supervisor to confirm their demob date and time. Many will be released earlier than their 14 day assignment and others may be asked to extend to support the incoming team. The last day worked on the 204 or the tentative demob list previously posted may no longer be valid.

For those needing air travel please visit the demob unit or call 239-658-0157 to confirm flight information. The Ground Support Unit will arrange for transportation for those that do not have a rental to return to the airport.

No person shall be released prior to obtaining adequate rest, with adequate rest being 8 hours off after a shift. No driver will drive more than 10 hours within a duty day. All travel for a duty day should be completed by 2200 hours.



Southern Area Incident Management Gold Team Fire Information

Looking for more information on the Cowbell and Parliament Fires in Big Cypress National Preserve? Follow us on social media:



InciWeb <https://inciweb.nwcg.gov/unit/2296>



Twitter <https://twitter.com/BigCypressNPS>



Facebook <https://www.facebook.com/BigCypressNPS>

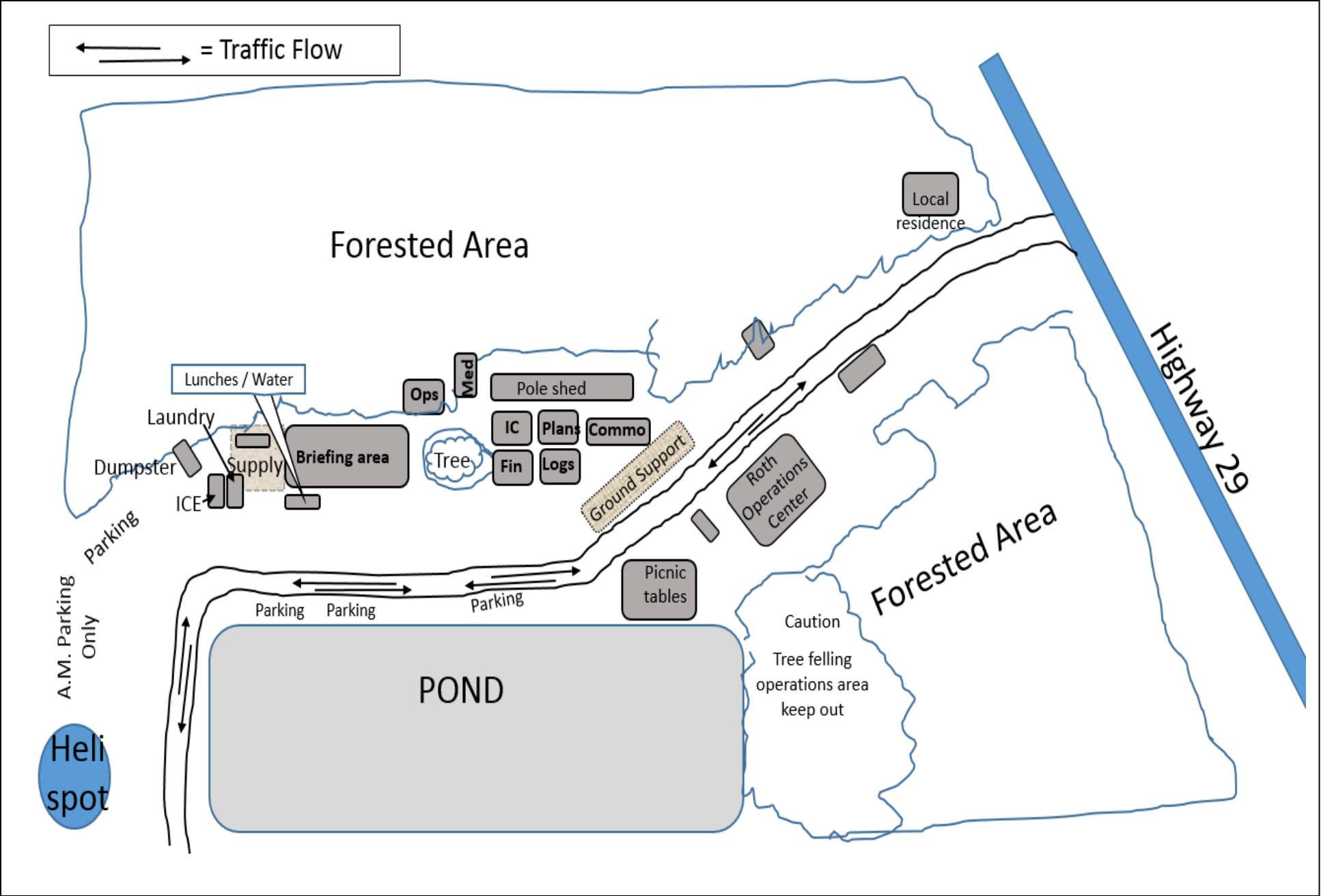
You can also call us between 8 a.m. and 8 p.m. at 305-204-6659.

For general information about the Big Cypress National Preserve, visit <https://www.nps.gov/bicy> or call 239-695-1107.

WE WANT YOUR PICTURES AND VIDEOS!

Please email us your videos and pictures at BICYfireinfo@gmail.com. We love to post them on social media and our information boards.

Base Camp Map



Cowbell Fire Vicinity Map

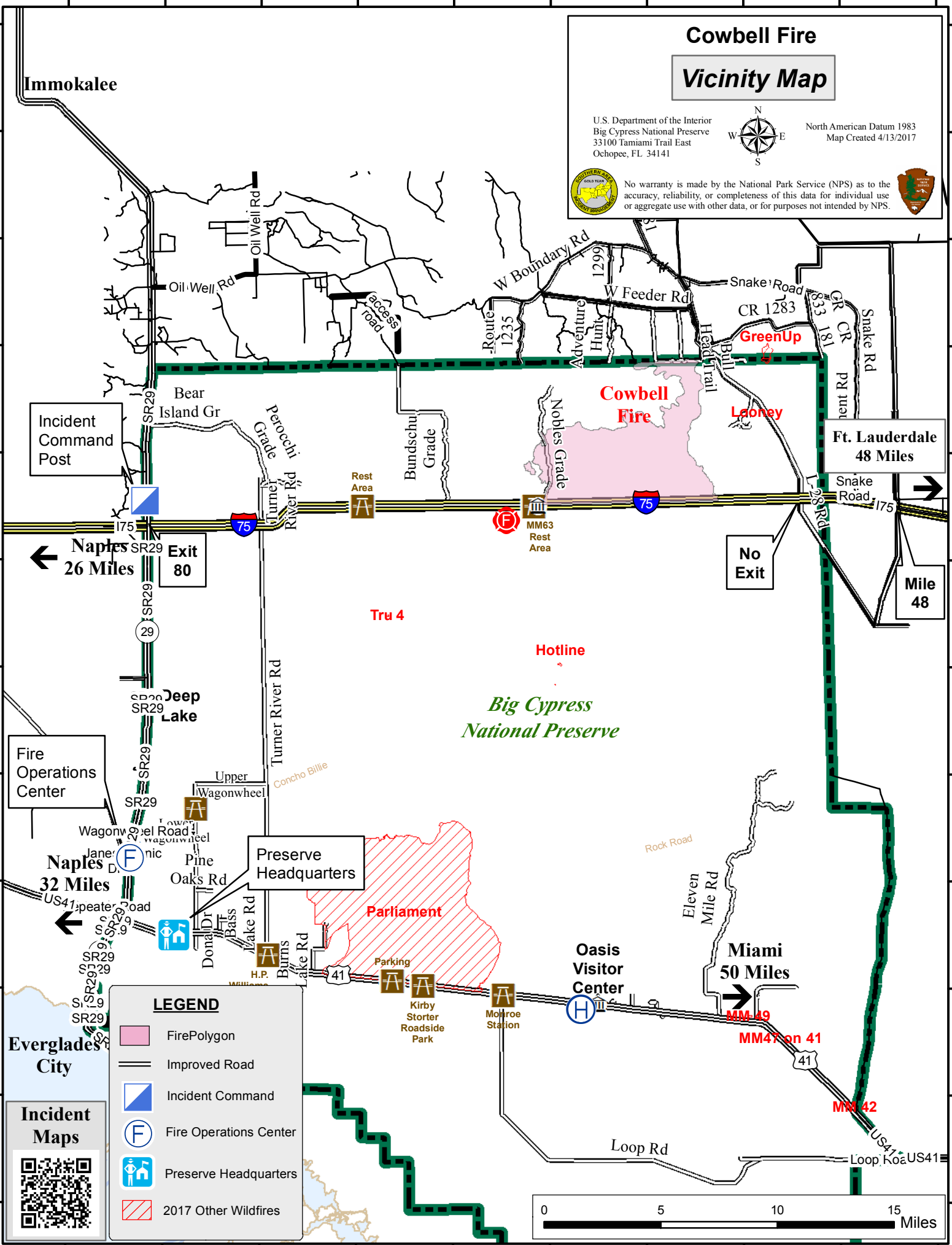
U.S. Department of the Interior
Big Cypress National Preserve
33100 Tamiami Trail East
Ochopee, FL 34141



North American Datum 1983
Map Created 4/13/2017



No warranty is made by the National Park Service (NPS) as to the accuracy, reliability, or completeness of this data for individual use or aggregate use with other data, or for purposes not intended by NPS.



Incident Command Post

Ft. Lauderdale
48 Miles

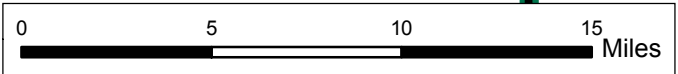
Naples
26 Miles

Fire Operations Center

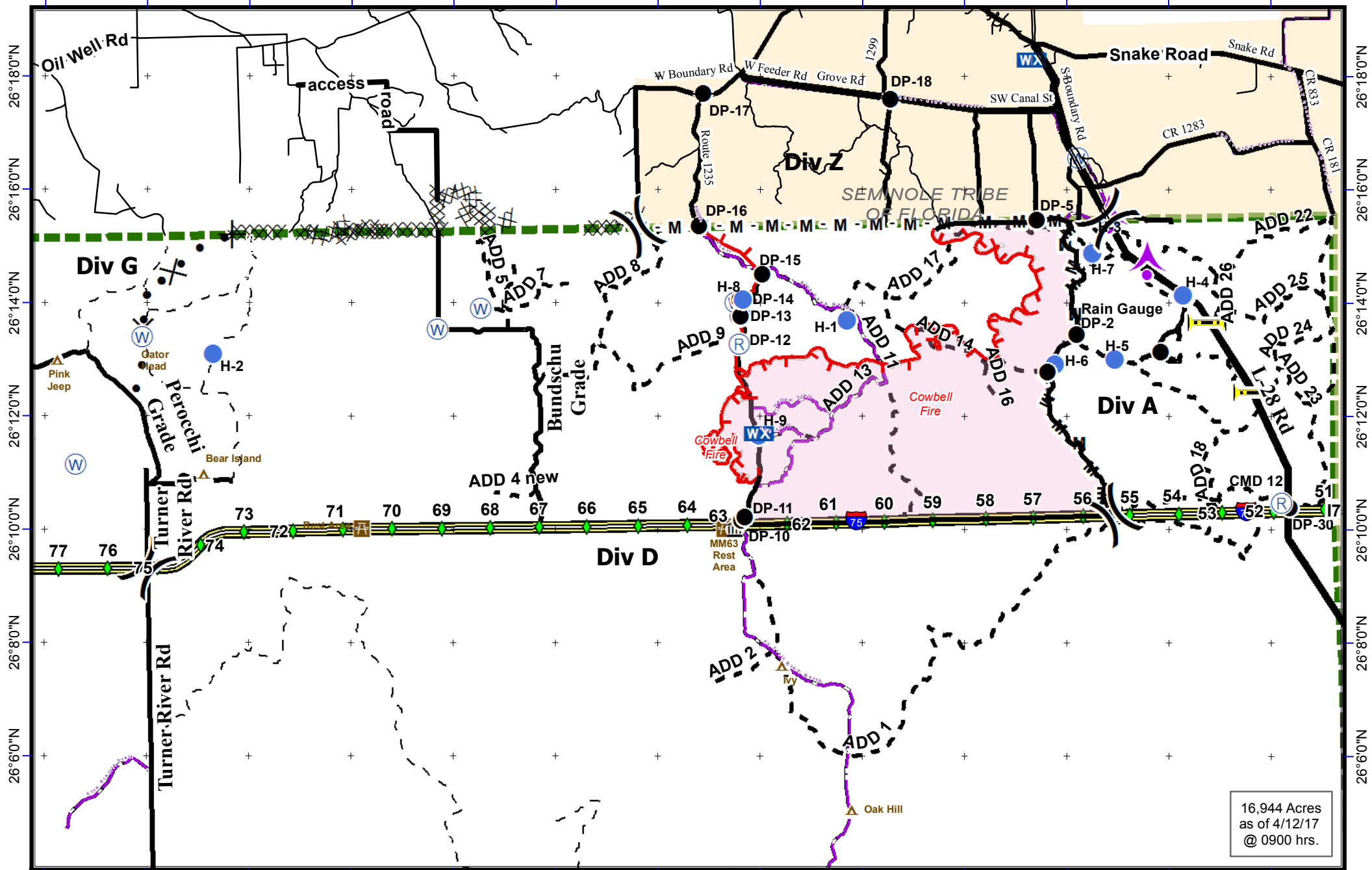
Preserve Headquarters

Incident Maps

LEGEND	
	Fire Polygon
	Improved Road
	Incident Command
	Fire Operations Center
	Preserve Headquarters
	2017 Other Wildfires



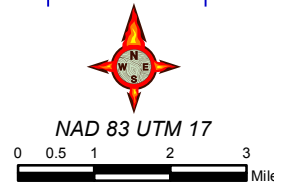
81°18'0"W 81°16'0"W 81°14'0"W 81°12'0"W 81°10'0"W 81°8'0"W 81°6'0"W 81°4'0"W 81°2'0"W 81°0'0"W 80°58'0"W 80°56'0"W 80°54'0"W



Cowbell Fire
 FL-BCP-017033
IAP Map
 April 14, 2017
 Day Shift



- ▬ Uncontrolled Fire Edge
- Completed Line
- M - M** Mastication Line
- Completed Dozer Line
- Proposed Line
- Rain Gauge
- Drop Point
- Helispot
- Division
- WX Mobile Weather
- ▬ Repeater
- ▲ Aerial Hazard
- Private Structures
- NPS Property
- ▬ Bridge Locations
- I-75
- Improved Road
- Primary Buggy Trail



PHONE LIST - COWBELL FIRE					
Position	Name	Phone Number	Position	Name	Phone Number
COMMAND					
Incident Commander	Steve Parrish	850-567-9507	OPERATIONS		
Incident Commander (t)	Lance Elmore	501-520-7276	Lead Ops	Greg Brooks	828-421-5025
Deputy Incident Commander	Marty Bentley	423-584-1682	Planning Ops	Steve Weaver	828-360-2476
Deputy Incident Commander (t)	Debbie Beard	850-524-9966	Planning Ops (t)	Paul Varnedoe	423-650-2184
Liaison Officer	Mike Wright	970-819-2890	Field Ops	Jim Durrwachter	850-566-6681
Public Information	Michelle Burnett	803-920-6167	Field Ops (t)	Mike Davis	936-219-7743
Public Information	Susan Blake	850-509-9952	Division A	Chad Cook	828-360-4985
Public Information (t)	Donald Simon	910-975-1895	Division A (t)	Heath Thomas	501-208-7077
Safety Officer	Buddy Kelly	850-447-1344	Division G	Chuck Alluisi	970-962-9466
Safety Officer	Mark Sullivan	205-531-7183	Division Z	Tom Crews	252-216-6361
Safety Officer (t)	Ken Gordon	850-688-4474	Division Z	Micah Johnson	360-301-4728
AFMO	Byron Hart	850-264-9567	Division Initial Attack	Kris Croddy	520-275-6747
PLANNING			Division Parliament	UNSTAFFED	
Chief	Dave Berens	601-319-6823	Structure Protection Group	Ryan Vice	979-215-1936
Chief	Dave Dobbs	928-699-5706	AIR OPERATIONS		
Resource Unit Leader	Melonie Sellers	601-508-8997	Air Operation Branch Director	Mike Rock	606-813-9750
Resource Unit Leader (t)	E.J. Bunzendahl	859-556-2347	Air Support Group Supervisor	Pete Kubiak	404-661-4819
Resource Unit Leader (t)	Jessica Hollingsworth	540-383-6531	LOGISTICS		
Situation Unit Leader	Jeff DeMatteis	601-415-9080	Chief	Chris Alford	571-334-8549
Situation Unit Leader (t)	Carol O'Bryan	903-263-8704	Chief (t)	Tom Phillips	936-635-7154
Fire Behavior Analyst	Gary Jarvis	251-288-1084	Deputy	Jerry Jussila	218-235-8983
Fire Behavior Analyst (t)	Kelly Cagle	336-302-0343	Deputy	Susan Cornett	903-930-5321
Fire Behavior Analyst (t)	Brenda Dale	906-280-3398	Supply Unit	Tom Piper	727-514-5513
Air Resource Advisor	Andrea Holland	970-274-0010	Facilities Unit	Glen Bee	208-847-5507
READ	Phil Wilson	406-871-1907	Ground Support Unit Leader	Michael Howarth	936-414-2697
READ	JoAnne Young	970-422-2246	Ground Support Unit Phone		772-631-2568
IMET	John Pendergrast	240-499-6649	Ordering Manager	Sherri Kite	850-209-2150
GISS	Chris Evans	928-273-4203	Receiving & Distribution	Chris Combs	727-992-0046
GISS	Melanie Hans	618-315-5404	Base Camp Manager	Mike Justus	
GISS (t)	Jeff Adams	361-205-4744	Communications	George Rosenthal	936-707-1832
Demob		239-658-0157	Communications	Ron Regan	828-772-8514
Check In	Jeff Turner	865-684-0095	Comms Trailer		772-631-2573
Training Specialist	John Davis	231-878-0074	Medical Unit Leader	Gene-Paul Matson	434-665-0444
Compter Tech	Jerry Dronberger	479-747-7020	Medical Unit Leader (t)	James Fortner	202-236-3139
Compter Tech	Rusty Brown	478-973-6231	Security Manager	Sasha Herrin	239-300-5755
Compter Tech (t)	Nikita Carty	305-878-997	Security Manager (t)	RJ Seehase	414-739-5696
FINANACE			Security	Ryan Maier	352-302-6117
Chief	Wanda Kelley	423-584-1472	Security	Chris Kelly	978-580-9245
Chief (t)	Holly Cyprian	928-919-3027	Security	Bain Bannon	318-446-1759
Time Unit Leader	Laura Wilson	765-427-7564	Security	Sam Maldonado	909-522-6905
Time Unit Leader (t)	Sherise Foster	919-943-7843	Security	Stanley Garner	352-672-1036
Comp/Claims	Terri McDonald	352-454-5385			
Equipment Time Recorder (t)	Donna Line	706-474-3216			
Personel Time Recorder	Sherise Foster	919-943-7843			
Personnel Time Recorder (t)	Gustavo Vallejo	423-457-7403			

UNIT LOG (ICS FORM 214-CG)

Purpose. The Unit Log records details of unit activity, including strike team activity or individual activity. These logs provide the basic reference from which to extract information for inclusion in any after-action report.

Preparation. A Unit Log is initiated and maintained by Command Staff members, Division/Group Supervisors, Air Operations Groups, Strike Team/Task Force Leaders, and Unit Leaders. Completed logs are submitted to supervisors who forward them to the Documentation Unit.

Distribution. The Documentation Unit maintains a file of all Unit Logs. All completed original forms MUST be given to the Documentation Unit.

<u>Item #</u>	<u>Item Title</u>	<u>Instructions</u>
1.	Incident Name	Enter the name assigned to the incident.
2.	Check-In Location	Enter the time interval for which the form applies. Record the start and end date and time.
3.	Unit Name/Designators	Enter the title of the organizational unit or resource designator (e.g., Facilities Unit, Safety Officer, Strike Team).
4.	Unit Leader	Enter the name and ICS Position of the individual in charge of the Unit.
5.	Personnel Assigned	List the name, position, and home base of each member assigned to the unit during the operational period.
6.	Activity Log	Enter the time and briefly describe each significant occurrence or event (e.g., task assignments, task completions, injuries, difficulties encountered, etc.)
7.	Prepared By	Enter name and title of the person completing the log. Provide log to immediate supervisor, at the end of each operational period.
	Date/Time	Enter date (month, day, year) and time prepared (24-hour clock).

Medical Incident Report- "9 Line"

FOR ALL MEDICAL EMERGENCIES: IDENTIFY ON SCENE INCIDENT COMMANDER BY NAME AND POSITION AND ANNOUNCE "MEDICAL EMERGENCY" TO INITIATE RESPONSE FROM IMT COMMUNICATIONS/DISPATCH.

Use items one through nine to communicate situation to communications/dispatch.

1. CONTACT COMMUNICATIONS/DISPATCH - Comms Trailer Phone (772-631-2573)

Radio Call Sign "784" for Life Threatening Emergencies on the Oasis or Carns repeater or by phone at 1-800-788-0511

Ex: "Communications, Div. Alpha. Stand-by for Priority Medical Incident Report." (If life threatening request designated frequency be cleared for emergency traffic.)

2. INCIDENT STATUS: Provide incident summary and command structure.

Nature of Injury/Illness		<i>Describe the injury (Ex: Broken leg with bleeding)</i>
Incident Name		<i>Geographic Name + "Medical" (Ex: Trout Meadow Medical)</i>
Incident Commander		<i>Name of IC</i>
Patient Care		<i>Name of Care Provider (Ex: EMT Smith)</i>

3. INITIAL PATIENT ASSESSMENT: Complete this section for each patient. This is only a brief, initial assessment. Provide additional patient info after completing this 9 Line Report.

Number of Patients:	Male / Female	Age:	Weight:
Conscious? <input type="checkbox"/> YES <input type="checkbox"/> NO = MEDEVAC!			
Breathing? <input type="checkbox"/> YES <input type="checkbox"/> NO = MEDEVAC!			
Mechanism of Injury: <i>What caused the injury?</i>			
Lat/Long (Datum NAD83)			

4. SEVERITY OF EMERGENCY, TRANSPORT PRIORITY

SEVERITY	TRANSPORT PRIORITY
<input type="checkbox"/> URGENT-RED Life threatening injury or illness. <i>Ex: Unconscious, difficulty breathing, bleeding severely, 2° – 3° burns more than 4 palm sizes, heat stroke, disoriented.</i>	Ambulance or MEDEVAC helicopter. Evacuation need is IMMEDIATE.
<input type="checkbox"/> PRIORITY-YELLOW Serious Injury or illness. <i>Ex: Significant trauma, not able to walk, 2° – 3° burns not more than 1-2 palm sizes.</i>	Ambulance or consider air transport if at remote location. Evacuation may be DELAYED.
<input type="checkbox"/> ROUTINE-GREEN Not a life threatening injury or illness. <i>Ex: Sprains, strains, minor heat-related illness.</i>	Non-Emergency. Evacuation considered Routine of Convenience.

5. TRANSPORT PLAN:

Air Transport: (Agency Aircraft Preferred)

<input type="checkbox"/> Helispot	<input type="checkbox"/> Short-haul/Hoist	<input type="checkbox"/> Life Flight	<input type="checkbox"/> Other
Ground Transport:			
<input type="checkbox"/> Self-Extract	<input type="checkbox"/> Carry-Out	<input type="checkbox"/> Ambulance	<input type="checkbox"/> Other

6. ADDITIONAL RESOURCE/EQUIPMENT NEEDS:

<input type="checkbox"/> Paramedic/EMT(s)	<input type="checkbox"/> Crew(s)	<input type="checkbox"/> SKED/Backboard/C-Collar
<input type="checkbox"/> Burn Sheet(s)	<input type="checkbox"/> Oxygen	<input type="checkbox"/> Trauma Bag
<input type="checkbox"/> Medication(s)	<input type="checkbox"/> IV/Fluid(s)	<input type="checkbox"/> Cardiac Monitor/AED
<input type="checkbox"/> Other (i.e. splints, rope rescue, wheeled litter)		

7. COMMUNICATIONS:

Function	Channel Name/Number	Receive (Rx)	Tone/NAC *	Transmit (Tx)	Tone/NAC *
COMMAND	CARNS Rpt Channel 1	172.4250	1035	170.1000	1035
COMMAND	OASIS Rpt Channel 2	172.4250	1035	171.6250	1035
COMMAND	CMD Channel 12	166.6125	No Tone	168.4000	110.9
AIR-TO-GRND	AG/85 Channel 10	168.3250	No Tone	168.3250	No Tone
TACTICAL					

*(NAC for digital radio system)

8. EVACUATION LOCATION:

Lat/Long (Datum NAD83) <i>EX: N 40 42.45' x W 123 03.24'</i>	
Patient's ETA to Evacuation Location:	
Helispot/Extraction Size and Hazards:	

9. CONTINGENCY:

Considerations: *If primary options fail, what actions can be implemented in conjunction with primary evacuation method? Be thinking ahead...*

REMEMBER: **Confirm ETA's of resources ordered
Act according to your level of training
Be Alert. Keep Calm. Think Clearly. Act Decisively.**