

# Incident Action Plan



Day Operational Period

Monday

4/17/17

0800-2000

## Cowbell Fire

19,297 acres

52% contained

FL-BCP-017033

PPKX14 (1502)

PFFSKX14017001

FFF2000000KX140

INCIDENT OBJECTIVES	1. Incident Name <b>Cowbell Fire</b>	2. Date Prepared <b>4/16/17</b>	3. Time Prepared <b>1700</b>
4. Operational Period <b>4/17/17 0800 - 2000</b>			
5. General Control Objectives For The Incident <u>Objectives for the Incident:</u> <ul style="list-style-type: none"> <li>• Protection of human life is top priority through the use of sound risk management decisions.</li> <li>• Protect private property and infrastructure, federal facilities, critical transportation corridors, recreational and cultural resource values, T&amp;E species and their habitat (e.g. Florida Panther, Florida bonneted bat, Red-Cockaded Woodpecker), and wilderness values through coordination with READS and following MIST Tactics on current and all initial and extended attack fires.</li> <li>• Provide opportunities to communicate and educate the public on the role of fire in the BCP and FPR ecosystems through social media and other outlets.</li> <li>• Provide training opportunities for Preserve, State, and local federal fire agency personnel to actively enhance successional planning of future firefighting personnel.</li> <li>• Provide initial attack for Big Cypress National Preserve and Florida Panther Refuge.</li> </ul>			
<u>Control Objectives:</u> <ul style="list-style-type: none"> <li>• Keep fire: <ul style="list-style-type: none"> <li>○ West of Add 14 and Add 17 on the eastern side</li> <li>○ South of the Preserve boundary on the northern side</li> <li>○ North of Interstate 75 on the south side</li> <li>○ East of State Highway 29 on the west side</li> </ul> </li> <li>• To minimize impacts to high values including Seminole and Miccosukee tribal lands, Sanctuary community, and private land within and near to the boundaries of the Big Cypress National Preserve and Florida Panther Wildlife Refuge.</li> <li>• Minimize smoke impacts on I-75, State Road 29 and US Highway 41 in order to avoid safety threats to the public.</li> <li>• Utilize confine, contain, and point source protection strategies and tactics that commit responders only to operations where and when they can be successful and under conditions where important values actually at risk are protected with the least exposure necessary while sustaining relationships with the people we serve.</li> </ul>			
6. Weather forecast for Period High pressure is slowly weakening. While the general wind will continue to be easterly, it will not be quite as gusty, but still around 10 mph. Moisture will be on the rise, allowing for a better chance of showers. While thunderstorms are not likely over the burn area, an isolated cell cannot be ruled out over South Florida, which could still cause an outflow boundary which could affect the fire. Also, any showers that develop, may be heavier, and may also produce some brief gusty wind.			
7. General Safety Message Look up, look down, look all around for hazards, recognize them and mitigate them.			
8. ATTACHMENTS (X IF ATTACHED) [ X ] Organization List - ICS 203                      [ X ] Medical Plan - ICS 206                      [ ] _____ [ X ] Division Assignment Lists - ICS 204                      [ X ] Incident Map                      [ ] _____ [ X ] Communications Plan - ICS 205                      [ X ] Traffic Plan                      [ ] _____			
9. Prepared By (Planning Section Chief)  <b>/s/ Dave Berens / Dave Dobbs</b>		10. Approved By (Incident Commander)  <b>/s/ Steve Parrish</b>	

ORGANIZATION ASSIGNMENT LIST		9.	Operations Section
1. Incident Name <b>COWBELL FIRE</b>		Lead Operations	Greg Brooks
		Planning Operations	Steve Weaver, Paul Varnedoe (t)
		Field Operations	Jim Durrwachter, Mike Davis (t)
2. Date 04/16/17	3. Time 1700		
4. Operational Period 04/17/17 DAY (0800 – 2000)		<b>a.</b>	<b>Divisions/Groups</b>
		Division	A/D
		Division	G
		Division	Z
		Group	Initial Attack
		Group	Parliament & Misc Fires
5. <b>Incident Commander and Staff</b>			
Incident Commander	Steve Parrish, Lance Elmore (t)		Ryan Vice
Deputy Incident Commander	Marty Bentley, Debbie Beard (t)		Chuck Alluisi/ Mike Honeycutt (t)
Liaison Officer	Mike Wright, Pam Martin (t)		Chad Cook, Heath Thomas (t)
Safety Officer	Buddy Kelley, Mark Sullivan, Ken Gordon (t)		Kris Croddy
Information Officer	Michelle Burnett, Susan Blake, Donald Simon (t)		UNSTAFFED
6. <b>Agency Reps</b>			
Agency Administrator	Tammy Whittington (Big Cypress)		
Agency Administrator	J.D. Lee (Big Cypress)		
Chief of Fire & Aviation	Jordan McKnight (Big Cypress)		
AFMO	Byron Hart (BICY/Panther)		
Zone FMO	Cass Palmer (Panther)		
Collier Co. Sheriff	Lt. Jake Walker	<b>b.</b>	<b>Air Operations Branch</b>
Seminole Tribe of Florida	Matt Flying		
Florida Highway Patrol	Lt. Joseph Bowers	Air Operation Branch Director	Mike Rock
Greater Naples Fire Rescue	J. Nolan Sapp	Air Support Group Supervisor	Matt Clinton/Mike O'Leary (t)
FFS Collier Co Forest Area Sup	Tony Curella	Air Tactical Group Supervisor	Ken McLaughlin
FFS Hendry Co Forest Area Sup	Joe Lecea	Helibase Manager	Mike Roof (t)
7. <b>Planning Section</b>			
Chief	Dave Berens, Dave Dobbs		
Resources Unit	Melonie Sellers, E.J. Bunzendahl (t)		
Situation Unit	Jeff DeMatteis, Carol O'Bryan (t)		
FBAN	Gary Jarvis, Brenda Dale (t), Kelly Cagle (t)		
		<b>8.</b>	<b>Logistics Section</b>
Air Resource Advisor	Andrea Holland	Chief	Chris Alford, Tom Phillips (t)
READ	Phil Wilson, JoAnne Young	Deputy	Susan Cornett
IMET	Steven Ippoliti	Supply Unit	
Geo. Info. Spec.	Chris Evans, Jeff Adams (t)	Facilities Unit	
Demob Unit	Jeff DeMatteis	Ground Support	Michael Howarth, Peter Lashoto, Kevin Wagner (t)
Status Check-In	Jeff Turner	Equipment Manager	Jason McCann (t)
Training	John Davis	Ordering Manager	Sherri Kite
ITSS	Jerry Dronberger, Nikita Carty (t)	Receiving & Distrib. Mgr.	Chris Combs/Jonathan Lampley (t)
Documentation	Bob Sobczak (t)	Base Camp Manager	Don Rumback
		Communications Unit	George Rosenthal, Ron Regan
10. <b>Finance Section</b>		Incident Communication Mgr.	
Chief	Wanda Kelley, Holly Cyprian (t)		
Time Unit	Laura Wilson, Sherise Foster (t)	Rado	Mark Pomponio, Federico Avakian, Brian Gieryk, Scott Brownlow
Equipment Time Unit	Donna Line (t)	Medical Unit Leader	Gene-Paul Matson
Cost Unit	Carolyn Hughes, Janice Lowe (t)	Security Manager	Sasha Herrin, RJ Seehase (t)
Comp/Claims	Terri McDonald, David Easter(t)	Security	Brian Phillips
Procurement	Leslie Solberg		
Personnel Time Recorder			
Prepared by (RESL) /s/ Melonie Sellers / EJ Bunzendahl (t)/Jessica Hollingsworth (t)			

## Division/Group Assignment List (ICS 204 WF)

<b>1. Incident Name:</b>			<b>3.</b>			
Cowbell Fire			<b>Branch:</b>		<b>Division/Group</b>	
<b>2. Operational Period:</b>			<b>A/D</b>			
Date/Time From: 04/17/17 0800	Date/Time To: 04/17/17 2000					
<b>4. Operations Personnel</b>						
AIR ATTACK SUPERVISOR				FIELD OPERATIONS		Jim Durrwachter Mike Davis (t)
DIVISION/GROUP SUPERVISOR	Micah Johnson			PLANNING OPERATIONS		Steve Weaver Paul Varnedoe (t)
<b>5. Resources Assigned this Period</b>						
Strike Team / Task Force / Resource Designator	LWD	Leader	Number Persons	Drop Off PT./Time	Pick Up PT./Time	
MOD Great Smoky O-102	4/18	Josh Nicholas	4	ICP/0800	ICP/2000	
MOD BIFZ #2 O-106	5/1	Sam Delong	8	ICP/0800	ICP/2000	
EMTF O-18	4/22	Bob Bruington	1	ICP/0800	ICP/2000	
<b>6. Control Operations/Work Assignments:</b>						
<b>Task:</b>						
<ul style="list-style-type: none"> <li>• Patrol and mop up 25 ft. from control line</li> <li>• Monitor and patrol by air</li> </ul>						
<b>Purpose:</b>						
<ul style="list-style-type: none"> <li>• To keep fire confined and contained west of ADD 17/ADD 14 on east flank of fire</li> <li>• To protect structures</li> <li>• To alert FHP of potential impact to I-75</li> <li>• Keep fire contained north of I-75</li> </ul>						
<b>End State:</b>						
<ul style="list-style-type: none"> <li>• Control fire perimeter west of ADD 17/ADD 14 to eliminate threat to Sanctuary area structures</li> <li>• Minimize risk to public traveling on I-75</li> <li>• Confine fire perimeter to reduce threats to resource values at risk</li> </ul>						
<b>7. Special Instructions:</b> Establish and maintain LCES during operational period. Do not engage in fire suppression activities along I-75 shoulders unless traffic hazards have been mitigated						
<b>8. Division/Group Communication Summary</b>						
Function	Channel	RX Frequency N/W	RXTone/NAC	TX Frequency N/W	TX Tone/NAC	Mode
COMMAND	12	166.6125		168.4000	110.9	A
COMMAND	13	168.7000		170.9750	110.9	A
TACTICAL	4	168.6000		168.6000		A
AIR TO GROUND	10	168.3250		168.3250		A
<b>9. Prepared By (Resource Unit Leader)</b>			<b>Approved By (Planning Section Chief)</b>			<b>Date</b>
/s/Melonie Sellers/EJ Bunzendahl (t) /Jessica Hollingsworth (t)			Dave Berens/Dave Dobbs			04/16/17
						<b>Time</b>
						16:00

## Division/Group Assignment List (ICS 204 WF)

<b>1. Incident Name:</b>			<b>3.</b>				
Cowbell Fire			<b>Branch:</b>		<b>Division/Group</b>		
<b>2. Operational Period:</b>			G				
Date/Time From: 04/17/17 0800	Date/Time To: 04/17/17 2000						
<b>4. Operations Personnel</b>							
AIR ATTACK SUPERVISOR			FIELD OPERATIONS		Jim Durrwachter, Mike Davis (t)		
DIVISION/GROUP SUPERVISOR	Chuck Alluisi Mike Honeycutt (t)		PLANNING OPERATIONS		Steve Weaver Paul Varnedoe (t)		
<b>5. Resources Assigned this Period</b>							
Strike Team / Task Force / Resource Designator	LWD	Leader		Number Persons	Drop Off PT./Time	Pick Up PT./Time	
TFLD O-172	4/30	Allan Kirby		1	ICP/0800	ICP/2000	
TFLD (t) O-173	4/30	Jared Nobles		1	ICP/0800	ICP/2000	
TFLD O-178	4/30	George Allalunis		1	ICP/0800	ICP/2000	
ENG 6 Firetrax E-86	4/19	Carlos Gutierrez		3	ICP/0800	ICP/2000	
ENG 6 Wildlands Fire Service E-87	4/19	Brian Terry		3	ICP/0800	ICP/2000	
ENG6 Wildlands Fire Service E-121	4/25	David Hogrefe		3	ICP/0800	ICP/2000	
Slimmer Suppression Buggy E-80	4/18	Matt Mateo		3	ICP/0800	ICP/2000	
BICY Suppression Buggy #3 E-65	4/18	Josh Manley		1	ICP/0800	ICP/2000	
Duece Buggy IA #607 E-89	4/23	JT Sohr		2	ICP/0800	ICP/2000	
Masticator E-6	4/30	Carlos DelCruze		1	ICP/0800	ICP/2000	
Masticator GEO-BOY E-83	4/24	Rob Shackelford		1	ICP/0800	ICP/2000	
HEQB O-124	4/24	Jesse Barr		1	ICP/0800	ICP/2000	
SOFR O-63	4/19	David Dallison		1	ICP/0800	ICP/2000	
READ O-33	4/18	Phil Wilson		1	ICP/0800	ICP/2000	
EMTF O-16	4/17	Tracey Milakovic		1	ICP/0800	ICP/2000	
<b>6. Control Operations/Work Assignments:</b>							
<b>Task:</b>							
<ul style="list-style-type: none"> <li>• Patrol and mop up 25 ft. from control line</li> <li>• Masticate contingency line</li> <li>• Coordinate firing with DIV Z as needed</li> <li>• Continue monitoring and using aerial support to contain slopovers on Nobles Grade</li> </ul>							
<b>Purpose:</b>							
<ul style="list-style-type: none"> <li>• To keep fire contained east of Kissimmee Billy Strand</li> <li>• To establish a contingency line</li> </ul>							
<b>End State:</b>							
<ul style="list-style-type: none"> <li>• Confine fire perimeter to reduce threats to resource values at risk</li> </ul>							
<b>7. Special Instructions:</b> Establish and maintain LCES during operational period. Coordinate with Field OPS in the event swing shift resources are required. Utilize MIST tactics as outlined in Fire Operations Guide for BICY. Follow tracked vehicle requirement restrictions.							
<b>8. Division/Group Communication Summary</b>							
Function	Channel	RX Frequency N/W	RXTone/NAC	TX Frequency N/W	TX Tone/NAC	Mode	
COMMAND	13	168.7000		170.9750	110.9	A	
COMMAND	15	173.0375		167.3250	110.9	A	
TACTICAL	5	168.2500		168.2500		A	
AIR TO GROUND	10	168.3250		168.3250		A	
<b>9. Prepared By (Resource Unit Leader)</b>			<b>Approved By (Planning Section Chief)</b>			<b>Date</b>	<b>Time</b>
/s/Melonie Sellers/EJ Bunzendahl (t) /Jessica Hollingsworth (t)			Dave Berens/Dave Dobbs			04/16/17	16:00

## Division/Group Assignment List (ICS 204 WF)

<b>1. Incident Name:</b>			<b>3.</b>				
Cowbell Fire			<b>Branch:</b>		<b>Division/Group</b>		
<b>2. Operational Period:</b>							
Date/Time From: 04/17/17 0800		Date/Time To: 04/17/17 2000		<b>Z</b>			
<b>4. Operations Personnel</b>							
AIR ATTACK SUPERVISOR				FIELD OPERATIONS		Jim Durrwachter Mike Davis (t)	
DIVISION/GROUP SUPERVISOR		Chad Cook Heath Thomas (t)		PLANNING OPERATIONS		Steve Weaver Paul Varnedoe (t)	
<b>5. Resources Assigned this Period</b>							
Strike Team / Task Force / Resource Designator		LWD	Leader		Number Persons	Drop Off PT./Time	Pick Up PT./Time
HC1 Asheville C-6		4/18	Allen Mitchell		18	ICP/0800	ICP/2000
TFLD O-61		4/19	Mario Marquez		1	ICP/0800	ICP/2000
MOD Buffalo O-21		4/23	Josh Hampton		5	ICP/0800	ICP/2000
ENG3 #51 E-99		4/23	Mike Anderson		5	ICP/0800	ICP/2000
ENG3 #321 E-98		4/23	Kenneth Vaughn		5	ICP/0800	ICP/2000
ENG3 #335 E-100		4/30	Bryan Reddish		5	ICP/0800	ICP/2000
Seminole Suppression Buggy E-60		4/16	Chris Kemp		2	ICP/0800	ICP/2000
Seminole Suppression Buggy E-139		4/18	Jeff Radovic		1	ICP/0800	ICP/2000
Transport Buggy E-38		4/18	Clint Weeks		1	ICP/0800	ICP/2000
Transport Buggy E-39		4/18	Captain Steve-Clinton Weeks		1	ICP/0800	ICP/2000
Transport Buggy E-40		4/18	Bobby Weeks		1	ICP/0800	ICP/2000
Transport Buggy E-41		4/18	Victor Robinson		1	ICP/0800	ICP/2000
SOFR O-89		4/19	John Foley		1	ICP/0800	ICP/2000
READ O-154		4/25	JoAnne Young		1	ICP/0800	ICP/2000
EMTP O-36		4/25	Frank Abel		1	ICP/0800	ICP/2000
<b>6. Control Operations/Work Assignments:</b>							
<b>Task:</b>							
<ul style="list-style-type: none"> <li>Patrol and conduct mop up 25 ft. from control line</li> <li>Conduct strategic firing operations on property boundary</li> </ul>							
<b>Purpose:</b>							
<ul style="list-style-type: none"> <li>To keep fire south of Preserve Boundary and west of ADD 17 to protect private land with structures</li> </ul>							
<b>End State:</b>							
<ul style="list-style-type: none"> <li>Control fire to eliminate threats to Seminole Tribe of Florida and private property</li> </ul>							
<b>7. Special Instructions:</b> Establish and maintain LCES during operational period. Coordinate with Field OPS in the event swing shift resources are required. Follow tracked vehicle requirements restriction. Utilize MIST tactics as outlined in Fire Operations Guide for BICY.							
<b>8. Division/Group Communication Summary</b>							
Function	Channel	RX Frequency N/W	RXTone/NAC	TX Frequency N/W	TX Tone/NAC	Mode	
COMMAND	12	166.6125		168.4000	110.9	A	
COMMAND	13	168.7000		170.9750	110.9	A	
TACTICAL	8	166.7500		166.7500		A	
AIR TO GROUND	10	168.3250		168.3250		A	
<b>9. Prepared By (Resource Unit Leader)</b>			<b>Approved By (Planning Section Chief)</b>			<b>Date</b>	<b>Time</b>
/s/Melonie Sellers/EJ Bunzendahl (t) /Jessica Hollingsworth (t)			Dave Berens/Dave Dobbs			04/16/17	16:00

## Division/Group Assignment List (ICS 204 WF)

<b>1. Incident Name:</b>			<b>3.</b>					
Cowbell Fire			<b>Branch:</b>		<b>Division/Group</b>			
<b>2. Operational Period:</b>			<b>IA</b>					
Date/Time From: 04/17/17 0800	Date/Time To: 04/17/17 2000							
<b>4. Operations Personnel</b>								
AIR ATTACK SUPERVISOR					FIELD OPERATIONS		Jim Durrwachter/Mike Davis (t)	
DIVISION/GROUP SUPERVISOR		Kris Croddy			PLANNING OPERATIONS		Steve Weaver Paul Varnedoe (t)	
<b>5. Resources Assigned this Period</b>								
Strike Team / Task Force / Resource Designator		LWD	Leader			Number Persons	Drop Off PT./Time	Pick Up PT./Time
T2IA	PR-1 C-7	4/28	Roberto Martinez			20	ICP/0800	ICP/2000
TFLD	** O-60	4/19	Harold Kibbe			1	ICP/0800	ICP/2000
TFLD	O-144	4/24	Willard Worley			1	ICP/0800	ICP/2000
TFLD (t)	O-177	4/30	David Moore			1	ICP/0800	ICP/2000
MOD	EE O-67	4/17	Matt Britt			8	ICP/0800	ICP/2000
ENG6	Big Thickett ** E-57	4/19	Gus Schaefer			2	ICP/0800	ICP/2000
ENG6	KS-PSF #671 E-140	4/28	Kyle Avesing, Andrew Laudie (t)			3	ICP/0800	ICP/2000
ENG6	K31 ** E-7	4/29	Jonathan O-Gorman			2	ICP/0800	ICP/2000
ENG6	Attack One E-58	4/19	Kevin Carter			2	ICP/0800	ICP/2000
ENG6	CSP661 E-59	4/20	Jason Johnson			2	ICP/0800	ICP/2000
ENG6	Wildlands Fire Service E-122	4/25	Chad Anderson			3	ICP/0800	ICP/2000
BICY	Suppression Buggy #1 E-129	4/19	James Ray			1	ICP/0800	ICP/2000
BICY	Suppression Buggy #2 E-64	4/23	Chris Dargan			3	ICP/0800	ICP/2000
BICY	Suppression Buggy #6 E-68	4/22	Sam Ashbaugh **			1	ICP/0800	ICP/2000
SOFR	O-135	4/25	Donald Foco			1	ICP/0800	ICP/2000
EMTF	O-17	4/22	Jim Stout			1	ICP/0800	ICP/2000
<b>6. Control Operations/Work Assignments:</b>								
<b>Task:</b>								
<ul style="list-style-type: none"> <li>• Coordinate with BICY duty officer for notification of newly reported ignitions</li> <li>• Coordinate initial attack action with assigned aviation and /or ground assets</li> <li>• Determine IA resource prepositioning needs across BICY and FPWR</li> </ul>								
<b>Purpose:</b>								
<ul style="list-style-type: none"> <li>• Ensure communications with FL Hwy Patrol regarding smoke on I-75 and Hwy 41</li> <li>• Ensure timely response on any IA within BICY and FPWR</li> </ul>								
<b>End State:</b>								
<ul style="list-style-type: none"> <li>• Protect human life</li> <li>• Minimize environment damage to protect habitat of threatened and endangered species</li> <li>• Minimize damage to public and private property</li> </ul>								
<b>7. Special Instructions:</b> **Resources identified for swing shift if needed. Coordinate with Field OPS to determine need. Follow tracked vehicle requirement restrictions. Establish and maintain LCES during operational period. Utilize MIST tactics as outlined in Fire Operations Guide for BICY. EMTF Jim Stout will be staged at ICP/Medical.								
<b>8. Division/Group Communication Summary</b>								
Function	Channel	RX Frequency N/W	RX Tone/NAC	TX Frequency N/W	TX Tone/NAC	Mode		
COMMAND	1	172.4250	1035	170.1000	1035	D		
COMMAND	2	172.4250	1035	171.6250	1035	D		
COMMAND	7	164.6250	1188	163.1500	1188	D		
TACTICAL	9	166.8250		166.8250		A		
AIR TO GROUND	6	169.1125		169.1125		A		
<b>9. Prepared By (Resource Unit Leader)</b>			<b>Approved By (Planning Section Chief)</b>			<b>Date</b>	<b>Time</b>	
/s/Melonie Sellers/EJ Bunzendahl (t) /Jessica Hollingsworth (t)			Dave Berens/Dave Dobbs			04/16/17	16:00	

## Division/Group Assignment List (ICS 204 WF)

<b>1. Incident Name:</b>		<b>3.</b>				
Cowbell Fire		<b>Branch:</b>	<b>Division/Group</b> <b>Parliament/ Misc. Fire Patrol</b>			
<b>2. Operational Period:</b>						
Date/Time From: 04/17/17 0800	Date/Time To: 04/17/17 2000					
<b>4. Operations Personnel</b>						
AIR ATTACK SUPERVISOR		FIELD OPERATIONS	Jim Durrwachter Mike Davis (t)			
DIVISION/GROUP SUPERVISOR		PLANNING OPERATIONS	Steve Weaver Paul Varnedoe (t)			
<b>5. Resources Assigned this Period</b>						
Strike Team / Task Force / Resource Designator	LWD	Leader	Number Persons	Drop Off PT./Time	Pick Up PT./Time	
UNSTAFFED						
<b>6. Control Operations/Work Assignments:</b>						
<b>Task:</b>						
<ul style="list-style-type: none"> <li>Patrol and monitor fires on BICY and FPWR with aviation and ground assets as directed by lead OSC commensurate with values at risk</li> <li>Monitor fires for further suppression management action</li> </ul>						
<b>Purpose:</b>						
<ul style="list-style-type: none"> <li>Assure suppression action taken limits environmental impact, consistent with MIST tactics</li> </ul>						
<b>End State:</b>						
<ul style="list-style-type: none"> <li>Protect human life</li> <li>Minimize damage to public and private property</li> <li>Minimize environmental damage to protect habitat of threatened and endangered species</li> </ul>						
<b>7. Special Instructions:</b> Follow tracked vehicle requirement restrictions. Establish and maintain LCES during operational period.						
Utilize MIST tactics as outlined in Fire Operations Guide for BICY.						
<b>8. Division/Group Communication Summary</b>						
Function	Channel	RX Frequency N/W	RXTone/NAC	TX Frequency N/W	TX Tone/NAC	Mode
COMMAND	7	164.6250	1188	163.1500	1188	D
TACTICAL	11	166.7250	0659	166.7250	0659	D
AIR TO GROUND	10	168.3250		168.3250		A
<b>9. Prepared By (Resource Unit Leader)</b>		<b>Approved By (Planning Section Chief)</b>			<b>Date</b>	<b>Time</b>
/s/Melonie Sellers/EJ Bunzendahl (t) /Jessica Hollingsworth (t)		Dave Berens/Dave Dobbs			04/16/17	16:00



# AIR OPERATIONS SUMMARY

OPERATIONAL PERIOD DATE: 04-17-2017

0900-2000

<b>1. INCIDENT NAME:</b> Cowbell	<b>2. PREPARED BY:</b> Mike Rock	<b>PREPARED DATE/TIME:</b> 04/16/2017 1730	<b>3. Sunrise:</b> 0701 <b>Sunset:</b> 1950
<b>4. REMARKS (Safety Notes, Hazards, Air Operations Special Equipment,, etc.):</b> Medivac Aircraft: <b>6HX</b> MTR- Located along state road 29.Fire Dispatch gets MTR activity every morning Do not over fly structures with external load missions. All aircraft should use strobes and running lights in smoky conditions. Hazards: Snags, non-incident aircraft, and winds. Contract helicopter working special use permit in North Central portion of BICY. Area identified on pilot briefing board. ATGS has air to air communications.			<b>5. Squawk 1255</b>  TFR—7/7786 ZMA FL, Airspace 25 nm NE of Ochopee SFC 3000ft.  NOTAM – 04/054 – Airspace firefighting aircraft 5nm of (9FL7) SFC 2000ft.

6. PERSONNEL	Phone	7. FREQUENCIES	AM	FM	8. FIXEDWING	Base
AOBD: Mike Rock ASGS: Matt Clinton	606-813-9750 208-634-9414	Air/Air Rotor	123.575		Air Attack- Air Attack	197GB – Aero Commander MKY 4566M Baron MKY
ATGS: Ken McLaughlin ATGS: Jay Lindgren ATGS-T Travis Hart	813-997-0317 406-461-1652 208-739-3817	Air/Air Fixed Wing	118.825		T-801 T-493	Seat –IMM, Start 0900 Seat —IMM, Start 0900
<u>Oasis Helibase (9FL7)</u> HEB1 Mark Oetzmann HEB1-T Jay Thatcher <u>Immokalee Airport</u> Seat Manager Jack Benzilio HMGB Connie Fox HEB2 – Tracy Elliott	239-695-0278 208-315-5030 970-903-7922  970-799-1232 303-854-8470 303-910-7619	Air/Ground Cowbell		168.3250 RX/TX (A)  169.1125 RX/TX (A) 167.9500 RX/TX (A)		
		Flight Following (BICY)		169.7250 RX N1514  163.3875 TX N1738		
Big Cypress Fire Dispatch	239-695-9280 x 104	Air/Guard		168.6250 RX/TX Tone 110.9		
		Deck		166.7750		

**9. HELICOPTERS (Use Additional Sheets As Necessary)**

FAA N# or Designator	TY	MAKE/MODEL	BASE	START	REMARKS	FAA N# or Designator	TY	MAKE/MODEL	BASE	START	REMARKS
206RW	3	Bell 206	Oasis	0900	Recon/Bucket	1KA	1	K-MAX	Oasis	0900	Bucket
0HH	3	Bell 206	Oasis/RON-Miami	0900	Recon / Bucket	612CK	1	S-61	IMM	0900	Tanked
28HX	2	205A1	Oasis	0900	Crew/Bucket	718	1	CH-54	IMM	0900	Tanked
6HX	2	Bell 205	Oasis	0900	Crew/Bucket						

**10. TASK/MISSION/ASSIGNMENT (Use ICS-220a if additional space needed; Type/Function includes: Air Tactical, Retardant, Recon, Personnel Transport, Water Dropping, etc.)**

TYPE/FUNCTION	NAME OF PERSONNEL OR CARGO (if applicable) OR INSTRUCTIONS FOR TACTICAL AIRCRAFT	MISSION START	FLY FROM	FLY TO
Mapping	As Requested	0930		
Reconnaissance	As Requested	0930		

## ***SAFETY is YOU& ME***

We are **ALL** accountable for **SAFE** behaviors

**INCIDENT:** Cowbell & Initial Attack

**DATE:** April 17, 2017

**Major Hazards and Risks:**

Transition, LCES



6. INSTRUCTIONS AND ASSIGNMENTS NOT CLEAR

**Transition:** is always a critical time in an incident.

Expect some changes. There will be new faces and new line supervision.

Know where you fit in the organization and who you are working for.

Introduce yourself to new people and share information.

If you have questions ensure you get answers prior to engaging the fire and you know who you report to

If anything is not clear, please ask questions.

**Extreme Fire Behavior** – Due to increased winds, low humidity and drier fuels, fire behavior will increase and become erratic. Make sure LCES is in place and validate it as conditions change.

**Lookout(s)** - Should be experienced, competent and trusted. Aviation may be used as a lookout where vegetation is thick without good vantage points. If aviation is used, all firefighters should be made aware during aviation down times, and post lookouts until aviation is back up.

**Communications** – Make sure batteries are good and that all crew members know what frequencies to use. Clear and concise language are key for radio communication.

**Escape Routes** – Many escape routes have been identified over the past several days. **Escape routes should be well marked so that all crew members are clear on direction of travel to safe area.** Have established trigger points, should escape be necessary. Trigger points should allow plenty of time for all crew members to escape to safety.

**Safety Zones** – Is a place where a firefighter can survive without deploying

## Incident Safety Analysis 215a

### Cowbell & Initial Attack

Monday April 17, 2017

8. Location	9. Hazard	6. Control or Abatement Action (Engineering, Administrative, PPE, Avoidance, Education, etc)
DIVS ALL / IA	Helicopter Operations	<ul style="list-style-type: none"> <li>~ Communications are established with all aircraft and ground crews at all times.</li> <li>~ Stay clear of all bucket drops when suppression actions are in place and allow 1 minute prior to re-entry.</li> <li>~ Ensure communications are established with firefighters before conducting bucket drops.</li> <li>~ Monitor Air-Ground AG communications.</li> <li>~ Follow aviation safety guidelines in IRPG and IHOG.</li> </ul>
DIVS D & IA	Roadside Response I - 75, Hwy. 41 & Hwy 29	<ul style="list-style-type: none"> <li>~ Do not engage in suppression activities along the road shoulders on I - 75 unless FHP has the road closed or they have traffic stopped. The median can be used for access.</li> <li>~ Do not park along the road shoulders on I -75.</li> <li>~ Anytime traffic is affected by the incident, contact the local law enforcement agency that has jurisdiction for assistance.</li> <li>~ Conduct all operations from as far as possible from traffic lanes.</li> <li>~ Park all vehicles on same side of road.</li> <li>~ Keep all hose, fire tools and equipment out of travel lanes.</li> <li>~ Use only vehicles equipped with emergency lights along highways.</li> <li>~ Operate pumps from the non-traffic side or from the cab.</li> </ul>
DIVS ALL / IA	Extreme Fire Behavior	<ul style="list-style-type: none"> <li>~ Share weather observations with all personnel assigned to division.</li> <li>~ Establish "Trigger Points" to withdraw.</li> <li>~ Use "Risk Management" process prior to engaging in suppression actions, refer to page 1, IRPG.</li> </ul>
DIVS ALL / IA	Hazard Trees	<ul style="list-style-type: none"> <li>~ Avoid cutting Hazard Trees, unless they are an obvious Safety Hazard to crews in the vicinity (Reference the "Big Cypress National Preserve - Wildfire Incident Resource Protection Plan")</li> <li>~ Follow "Hazard Tree Safety" guidelines, IRPG page 22.</li> <li>~ Post lookouts, or use a spotter in mop-up areas.</li> <li>~ Don't park vehicles or take breaks around hazard trees.</li> <li>~ Establish trigger points for disengagement during high wind events.</li> <li>~ Remember that the hazard zone extends a minimum of 2 1/2 tree heights.</li> </ul>
DIVS ALL / IA	Injury & Medical Emergency	<ul style="list-style-type: none"> <li>~ For Medical Incident, follow the 9 line procedures.</li> <li>~ For "air hoist capability" or "snake bite treatment" contact Radio call sign <b>'784'</b> to request assistance.</li> <li>~ Assist injured employee with appropriate medical care.</li> <li>~ Use EMT's on Division for initial care.</li> <li>~ Follow medical protocol as outlined in ICS-206 &amp; IRPG Pgs. 99-108</li> </ul>
DIVS ALL / IA	Driving & Traffic	<ul style="list-style-type: none"> <li>~ Practice "Defensive Driving" techniques traveling on all roads and city streets.</li> <li>~ Do not drive by helicopters dipping out of canal on the L - 28 road.</li> <li>~ Use spotters when backing</li> <li>~ Keep clutter off dash and inside cab.</li> <li>~ Follow Driving LCES (Lights, Chock blocks, Emergency brake, Seat belts.</li> <li>~ Always use headlights when on dusty roads.</li> <li>~ Yield to pedestrians and bicycles.</li> <li>~ Observe posted speed limits.</li> <li>~ Use the 3 second rule for following distance when driving.</li> <li>~ Avoid distractions (eating, cell phones, radio).</li> <li>~ Ensure that windshields are kept clean of dust and bugs.</li> </ul>
DIVS A & Z	Structure Protection & HAZMAT	<ul style="list-style-type: none"> <li>~ Review Watch outs, IRPG page 12. <b>Do Not</b> commit to stay and protect a structure if trigger points are reached.</li> <li>~ Use "Structure Assessment" checklist, IRPG pages 12-16.</li> <li>~ No safety zones are present, set trigger point to safe retreat.</li> <li>~ Patrol after passage of the fire front when safe.</li> <li>~ Follow "HAZMAT on pages 34-36 in IRPG.</li> </ul>
DIVS All / IA	Swamp Buggy	<ul style="list-style-type: none"> <li>~ Ensure equipment is inspected and safe to use</li> <li>~ Restrict Buggy use to established trails</li> <li>~ Ensure operator is trained and certified to operate</li> <li>~ Ensure operator has proper PPE</li> <li>~ Passengers wear hardhats &amp; use 3 points of contact when loading or unloading</li> <li>~ Secure all seating so that it is stable and does not move</li> </ul>

## Incident Safety Analysis 215a

### Cowbell & Initial Attack

**Monday April 17, 2017**

DIVS ALL / IA	Communications	<ul style="list-style-type: none"> <li>~ Maintain communication with aviation resources, and suppression organization.</li> <li>~ Ensure all know frequency and protocol for contacting resources.</li> <li>~ Utilize the ICS 205.~ Utilize human repeaters when working in dead spots.</li> <li>~ Do not engage if communications cannot be established.</li> </ul>
DIVS ALL & IA	Power Utilities	<ul style="list-style-type: none"> <li>~ Notify all personnel of down electrical lines.</li> <li>~ Refer to the IRPG page 24 for Power Line Safety.</li> <li>~ Always treat downed wires as energized.</li> <li>~ Identify and avoid high tension transmission lines.</li> <li>~ Identify and avoid high pressure natural gas lines.</li> <li>~ Identify and avoid damaged gas service near structures.</li> <li>~ Be aware of utility restoration in your work area.</li> </ul>
DIVS ALL / IA	Chain Saw Operations	<ul style="list-style-type: none"> <li>~ Follow "Hazard Tree Safety" guidelines, IRPG page 22</li> <li>~ Look up, Look down, Look around for hazard tree indicators.</li> <li>~ Only fell and buck trees within your qualifications, and training.</li> <li>~ Follow "Procedural Felling Operations" on page 79 in IRPG.</li> <li>~ Do not fall trees during high wind events.</li> <li>~ Ensure proper use of all required PPE.</li> </ul>
DIVS ALL / IA	Firing Operations & Devices	<ul style="list-style-type: none"> <li>~ Only personnel trained in the use of each device will be authorized to use firing equipment.</li> <li>~ Ensure all personnel are aware of firing operations that may affect them and coordinate with adjoining divisions.</li> <li>~ Wear appropriate PPE.</li> <li>~ Ensure aerial/ground ignition plans have been adequately developed and personnel are briefed.</li> <li>~ Stay clear of bucket drops when pretreating fuels with air operations.</li> <li>~ Ensure that communications are established with helicopters if pretreating fuels.</li> </ul>
DIVS ALL / IA	Unburned Area/Reburn Potential	<ul style="list-style-type: none"> <li>~ Monitor weather.</li> <li>~ Base actions upon observed and predicted fire behavior.</li> <li>~ LCES Checklist (IRPG pg. 6).</li> <li>~ Look Up, Down and Around (IRPG pg. 2-3).</li> </ul>
DIVS ALL / IA	Fatigue & Over Exertion	<ul style="list-style-type: none"> <li>~ Drink 1 quart of water each hour during and after work.</li> <li>~ Rotate crews out of smoky areas.</li> <li>~ Set a reasonable work pace and allow adequate rest breaks while on the project.</li> <li>~ Use buddy system to monitor personnel of heat related and fatigue issues.</li> <li>~ Follow work / rest guidelines.</li> </ul>
DIVS A / Z / G	Heavy Equipment Operations	<ul style="list-style-type: none"> <li>~ Ensure communications are established with operators.</li> <li>~ Use hand signals if other communications are unavailable.</li> <li>~ Maintain a 100'- 200' exclusion area around equipment and increase it to 1 1/2 times tree height when in timber.</li> <li>~ Use a spotter when backing.</li> </ul>
DIVS ALL / IA	Wildlife	<ul style="list-style-type: none"> <li>~ Watch out for wildlife such as alligators, bear, deer, panthers, snakes.</li> <li>~ Do not feed, handle or taunt wildlife.</li> <li>~ Maintain safe distance and avoid contact ~Discard trash (food and containers) in proper disposal sites.</li> <li>~ Secure pump location sites, watch for alligators, snakes and other wildlife.</li> </ul>
DIVS ALL / IA	Firefighter & Public Smoke Exposure	<ul style="list-style-type: none"> <li>~ Identify homes and structures with private parties remaining behind the evacuation.</li> <li>~ Identify personnel responsible for contacting private parties.</li> <li>~ Use warning lights and provide traffic control on roadways during smoky and night operations.</li> <li>~ Rotate crews out of smoky areas during firing and mop-up operations.</li> <li>~ Contact Communications when firing operations are initiated.</li> </ul>
DIVS ALL / IA	UTV use	<ul style="list-style-type: none"> <li>~ Ensure equipment is inspected and safe to use.</li> <li>~ Restrict UTV use to established trails</li> <li>~ Ensure operator is trained and certified to operate.</li> <li>~ Ensure operator has proper PPE according to the Redbook and/or RMA.</li> <li>~ Question if it is mission critical.</li> </ul>
DIVS ALL / IA	Unplanned Public Interaction	<ul style="list-style-type: none"> <li>~ Be alert to non-fire personnel.</li> <li>~ All non-fire personnel will be escorted while on fireline.</li> <li>~ Post lookouts to in areas with public to avoid conflicts with mission tasks.</li> <li>~ Ensure sufficient security to restrict access to exclusion area.</li> </ul>

## MEDICAL PLAN (ICS 206)

<b>1. Incident Name:</b> Cowbell Fire		<b>2. Operational Period:</b> Date From: 04-17-17 Date To: 04-17-17 Time From: 0800 Time To: 2000					
<b>3. Medical Aid Stations:</b>							
Name	Location	Contact Number(s)/Frequency	Paramedics on Site?				
Gene-Paul Matson EMTF, MEDL	Medical ICP	434-665-0444	<input checked="" type="checkbox"/> Yes	<input type="checkbox"/> No			
Jim Stout EMTF, MEDL(T)	Medical ICP	480-296-1566	<input checked="" type="checkbox"/> Yes	<input type="checkbox"/> No			
Frank Abel	Division Z	423-595-1578	<input checked="" type="checkbox"/> Yes	<input type="checkbox"/> No			
Tracy Milakovic	Division G	719-850-0022	<input type="checkbox"/> Yes	<input checked="" type="checkbox"/> No			
Bob Bruington	Division A/D	801-782-3585	<input type="checkbox"/> Yes	<input checked="" type="checkbox"/> No			
<b>4. Transportation (indicate air or ground):</b>							
Ambulance Service	Location	Contact Number(s)/Frequency	Level of Service				
Collier County EMS (ground)	Everglades City (Medic 61)	911	<input checked="" type="checkbox"/> ALS	<input type="checkbox"/> BLS			
Collier County Med-Flight (air)	Naples Airport	911	<input checked="" type="checkbox"/> ALS	<input type="checkbox"/> BLS			
6HX Bell 205 (air) medical evacuation	Oasis Heli-base	168.3250 (A/G 85)	<input type="checkbox"/> ALS	<input checked="" type="checkbox"/> BLS			
<b>5. Hospitals:</b>							
Hospital Name	Address	Contact Number(s)	Travel Time		Trauma Center	Burn Center	Helipad
			Air	Ground			
Physicians Regional Collier Blvd	8300 Collier Blvd. Naples, FL 34114 Lat:26°6.313'/Long: -81°41.106'	239-354-6000 (Main) 239-354-6190 (ER)	15	50	<input type="checkbox"/> Yes Level: _____	<input type="checkbox"/> Yes <input checked="" type="checkbox"/> No	<input checked="" type="checkbox"/> Yes <input type="checkbox"/> No
Physicians Regional Pine Ridge	6101 Pine Ridge Road, Naples 34119 Lat:26°12.833'/Long: -81°43.954'	239-348-4000 (Main) 239-304-4748 (ER)	15	50	<input type="checkbox"/> Yes Level: _____	<input type="checkbox"/> Yes <input checked="" type="checkbox"/> No	<input checked="" type="checkbox"/> Yes <input type="checkbox"/> No
Naples Community Hospital	350 7 <sup>th</sup> Street North, Naples 34102 Lat:26°9.046'/Long: -81°47.907'	239-513-7709 (Main) 239-436-5151 (ER)	15	60	<input checked="" type="checkbox"/> Yes Level: <u>2</u>	<input type="checkbox"/> Yes <input checked="" type="checkbox"/> No	<input checked="" type="checkbox"/> Yes <input type="checkbox"/> No
Jackson Memorial Hospital	1611 NW 12 Avenue, Miami Lat:25°47.508'/Long: -80°12.756'	305-585-1111 (Main) 305-585-6910 (ER)	20	60	<input checked="" type="checkbox"/> Yes Level: <u>1</u>	<input checked="" type="checkbox"/> Yes <input type="checkbox"/> No	<input checked="" type="checkbox"/> Yes <input type="checkbox"/> No
Kendal Regional Medical Center	11750 SW 40 <sup>th</sup> St., Miami 33175 Lat:25°43.916'/Long: -80°23.148'	305-223-3000 (Main) 305-227-5544 (ER)	20	50	<input checked="" type="checkbox"/> Yes Level: <u>1</u>	<input type="checkbox"/> Yes <input checked="" type="checkbox"/> No	<input checked="" type="checkbox"/> Yes <input type="checkbox"/> No
<b>6. Special Medical Emergency Procedures:</b>							
<ul style="list-style-type: none"> <li>• Patient or nearest responder notifies Group Supervisor who will respond to the scene and become the "incident within an incident" (IWI) commander.</li> <li>• <b>Group Supervisor will notify nearest medical responder and ICP-Communications</b> of the incident and "Nine Line" report attached to the back of this IAP or page 108 of the IRPG.</li> </ul> <p>Call "784" (Emergency &amp; Law Enforcement) Everglades Communications on the <b>Oasis or Carns Repeater, or by phone at 1-800-788-0511</b> if it is determined that a <b>pre-hospital medevac care, air hoist capability or snake bite treatment</b> is required. MedFlight located at Naples Municipal Airport will be used for pre-hospital medevac care. Miami-Dade Fire Rescue (MDFR) Air Rescue Bureau will be used for air hoist rescue and also for snake bite treatment. Everglades Communications will advise the 911 dispatcher for Collier or Dade County for their helicopter to communicate through the Incident's Air/Ground frequency.</p> <p>Note: If possible, give coordinates in aviation format – Degrees Decimal Minutes</p> <p><input type="checkbox"/> Check box if aviation assets are utilized for rescue. If assets are used, coordinate with Air Operations.</p>							
<b>7. Prepared by (Medical Unit Leader):</b> Name: <u>Gene-Paul Matson</u> Signature: <u>/s/ Gene-Paul Matson</u>							
<b>8. Approved by (Safety Officer):</b> Name: <u>Ken Gordon</u> Signature: <u>/s/ Kenneth R. Gordon</u>							
ICS 206		IAP Page _____		Date/Time: <u>04/17/2017</u>			

## INCIDENT RADIO COMMUNICATIONS PLAN (ICS 205)

3. Operational Period: DAY									
Date/Time From: 04/17/2017 0800			Date/Time To: 04/17/2017 2000						
Zone Group	Ch #	Function	Assignment	RX Freq	RX Tone/NAC	TX Freq	TX Tone/NAC	Mode (A,D, or M)	Remarks
	1	CARNS RPT	Initial Attack	172.4250	1035	170.1000	1035	D	Talk Group 1
	2	OASIS RPT	Initial Attack	172.4250	1035	171.6250	1035	D	Talk Group 1
	3	BCY LCL		166.7750	No Tone	166.7750	No Tone	A	
	4	BICY TAC 1	Division A /D	168.6000	No Tone	168.6000	No Tone	A	
	5	BICY LCL 2	DIVISION G	168.2500	No Tone	168.2500	No Tone	A	
	6	A/G 59	Initial Attack	169.1125	No Tone	169.1125	No Tone	A	
	7	Panther RPT	Initial Attack Parliament	164.6250	1188	163.1500	1188	D	Talk Group 1
	8	PANTHER TAC 1	DIVISION Z	166.7500	No Tone	166.7500	No Tone	A	
	9	PANTHER TAC 2	Initial Attack	166.8250	No Tone	166.8250	No Tone	A	
	10	A/G 85	ALL DIVISIONS	168.3250	No Tone	168.3250	No Tone	A	
	11	Everglades TAC 1	Parliament Misc.	166.7250	0659	166.7250	0659	D	
	12	CMD 12	DIVISION A/Z	166.6125	No Tone	168.4000	110.9	A	
	13	CMD 13	DIVISION D/G/Z	168.7000	No Tone	170.9750	110.9	A	
	14	A/G	Aerial Ignition	167.9500	No Tone	167.9500	No Tone	A	
	15	CMD 15	DIV G	173.0375	No Tone	167.3250	110.9	A	
	16	AIR GUARD		168.6250	No Tone	168.6250	110.9	A	
Name: GEORGE ROSENTHAL			Signature: /s/ George Rosenthal						
			Date/Time: 04/16/2017 1600						

# TRAINING MESSAGE

April 17

## *Trainee Watch Out Situation*

The current team is leaving and a new team will be taking over management of the incident – It's transition time!

A new training specialist will be arriving with the Blue Team and I fully expect the training unit to be up and running smoothly as usual. So while I don't anticipate any administrative hiccups from the transition, it would still be a good idea for our active trainees to drop by the Finance/Training/Check-In/Demob trailer sometime within a few days of the change-over. Introduce yourself and let the new person know what and how you've been doing on your assignment. And while you are there, check to see that your documentation remains in good order.

Thanks for your good work!

*"I hear and I forget. I see and I remember. I do and I understand."* Confucious  
John Davis – TNSP

## **Demob Message**

All personnel should be in contact with their incident supervisor to confirm their demob date and time. Many will be released earlier than their 14 day assignment and others may be asked to extend to support the incoming team. The last day worked on the 204 or the tentative demob list previously posted may no longer be valid.

For those needing air travel please visit the demob unit or call 239-658-0157 to confirm flight information. The Ground Support Unit will arrange for transportation for those that do not have a rental to return to the airport.

No person shall be released prior to obtaining adequate rest, with adequate rest being 8 hours off after a shift. No driver will drive more than 10 hours within a duty day. All travel for a duty day should be completed by 2200 hours.



**To: All Incident Personnel, Cowbell Fire**

As Southern Area Type II Incident Commander, I am committed to a policy of “zero tolerance” of inappropriate behavior during incident operations. Any form of harassment, discriminatory practices, or disrespectful behavior will not be tolerated. Known or reported acts will be dealt with appropriately.

I am particularly concerned about the perception that alcohol has a place in any of the Incident facilities. It is not appropriate to indulge in alcoholic beverages during any fire assignment.

The Teams from the Southern Region have a team expectation of “NO ALCOHOL” from the time of dispatch until the time of physical release from the Incident. Members of the Team voluntarily comply with this expectation; all incident personnel will be expected to do so also.

We endorse, support, and expect an attitude of mutual respect for all Incident personnel and the public we serve. We also, endorse the attitude and work ethic that places “Safety First, every time on every Incident.” We expect nothing less.

/s/ Steve Parrish  
Incident Commander  
Southern Area Gold Team



# Recycling Guidelines

What is Allowed	What is not Allowed
Plastic #1 through #7, aluminum, and steel cans	Window glass, ceramics, light bulbs
Clear, Brown, and Green Glass	Automotive fluids, paint, cleaning products
Cardboard	Batteries
Paper, magazines, phone books	No food contaminated paper
<ul style="list-style-type: none"><li>• Break down all cardboard boxes</li><li>• Empty all liquids and food products</li></ul>	

## Cowbell Fire Incident Laundry Services

Laundry services for all personnel assigned to the Cowbell Fire is now available. Laundry can be dropped off at the laundry trailer directly adjacent to supply on Monday and Thursday mornings. Clean laundry will be available for pick up at the laundry trailer by 1500 Tuesday and Friday. All clean laundry will be INSIDE the laundry trailer. You can pick up your laundry anytime. Please follow these simple instructions:

1. Place your dirty laundry in a bag and take it to the laundry trailer.
2. Fill out two tags with your name and O or E number.
3. Fill out sign-up sheet.
4. Give your laundry to the Facilities Unit personnel who will be present to assist you.
5. When you pick up your clean laundry please sign next to your name on the sign-up sheet where it indicates that you received it. The clipboard with the sign-up sheet will be inside the trailer.
6. Please close the trailer door after you have picked up your clean laundry or ask Facilities Unit personnel to assist you.

We are pleased to offer this service. If you have any questions please ask Facilities Unit personnel.



## Southern Area Incident Management Gold Team Fire Information

Looking for more information on the Cowbell and Parliament Fires in Big Cypress National Preserve? Follow us on social media:



InciWeb <https://inciweb.nwcg.gov/unit/2296>



Twitter <https://twitter.com/BigCypressNPS>



Facebook <https://www.facebook.com/BigCypressNPS>

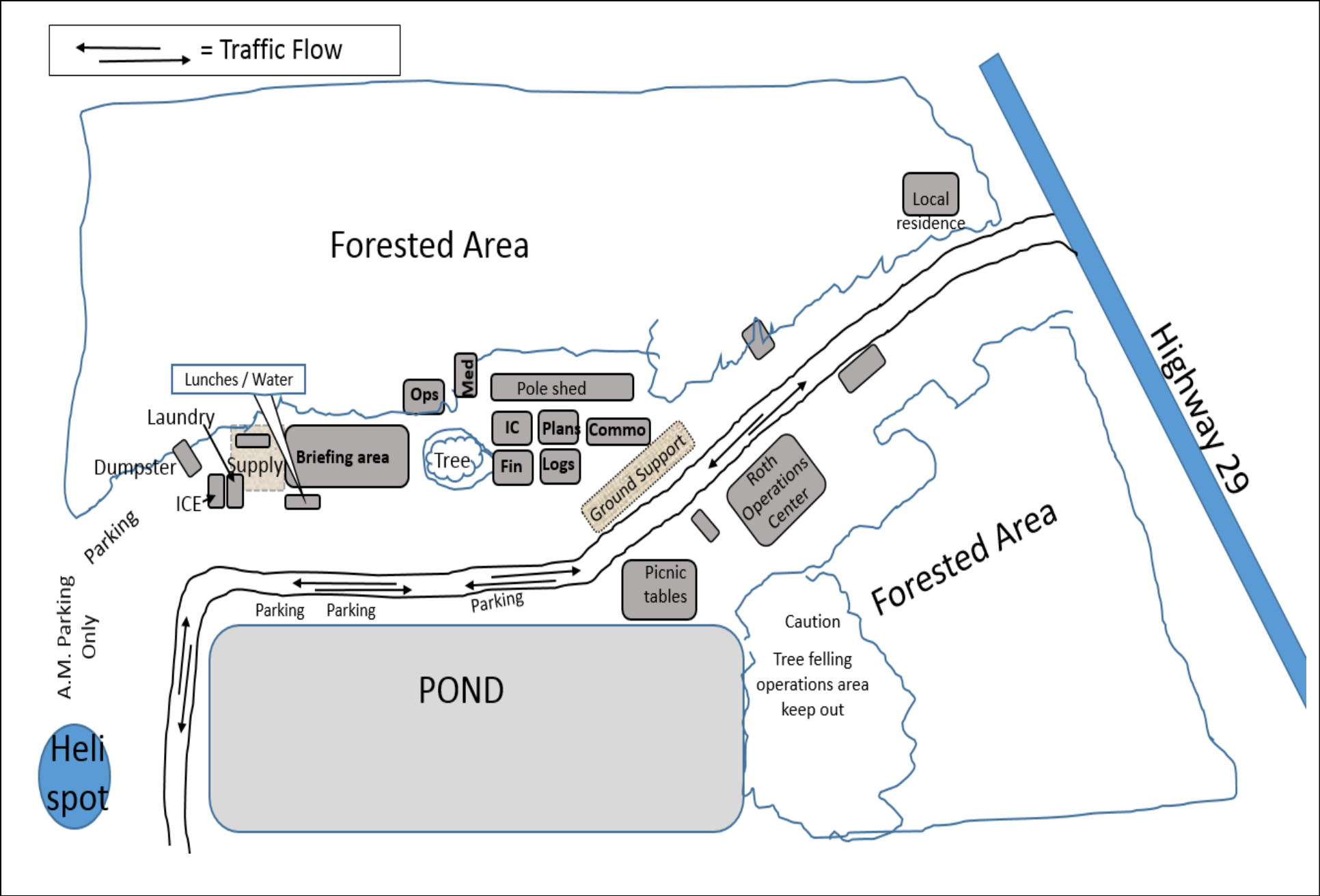
You can also call us between 8 a.m. and 8 p.m. at 305-204-6659.

For general information about the Big Cypress National Preserve, visit <https://www.nps.gov/bicy> or call 239-695-1107.

**WE WANT YOUR PICTURES AND VIDEOS!**

Please email us your videos and pictures at [BICYfireinfo@gmail.com](mailto:BICYfireinfo@gmail.com). We love to post them on social media and our information boards.

# Base Camp Map



81°24'W 81°20'W 81°16'W 81°12'W 81°8'W 81°4'W 81°0'W 80°56'W 80°52'W 80°48'W

26°28'N 26°24'N 26°20'N 26°16'N 26°12'N 26°8'N 26°4'N 26°0'N 25°56'N 25°52'N 25°48'N 25°44'N

19,297 acres  
04/16/2017  
1130 hrs

# Immokalee

## Cowbell Fire

### Vicinity Map

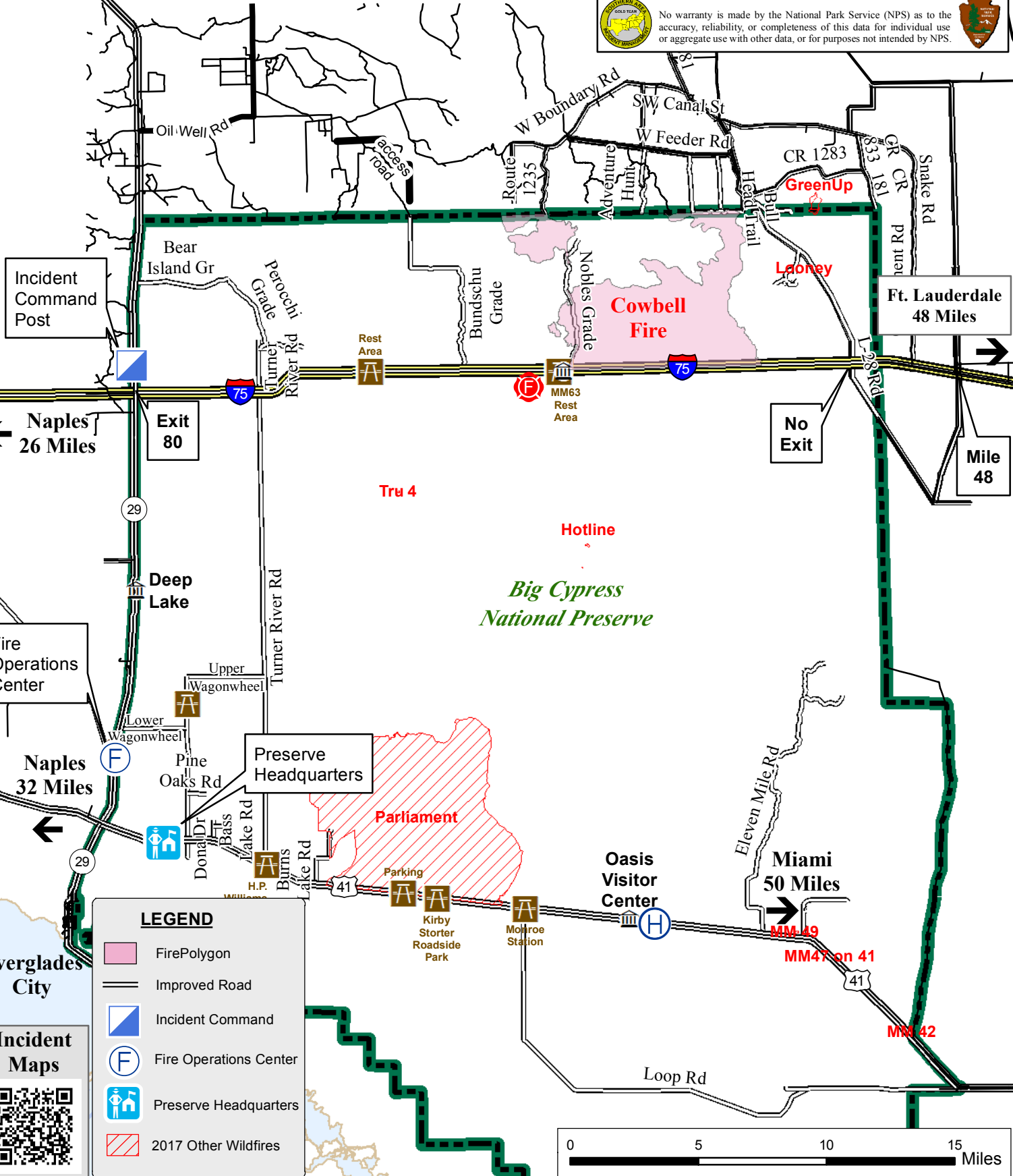
U.S. Department of the Interior  
Big Cypress National Preserve  
33100 Tamiami Trail East  
Ochopee, FL 34141



North American Datum 1983  
Map Created 4/16/2017



No warranty is made by the National Park Service (NPS) as to the accuracy, reliability, or completeness of this data for individual use or aggregate use with other data, or for purposes not intended by NPS.



Incident Command Post

Naples 26 Miles

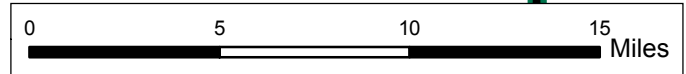
Fire Operations Center

Naples 32 Miles

### Incident Maps



LEGEND	
	FirePolygon
	Improved Road
	Incident Command
	Fire Operations Center
	Preserve Headquarters
	2017 Other Wildfires

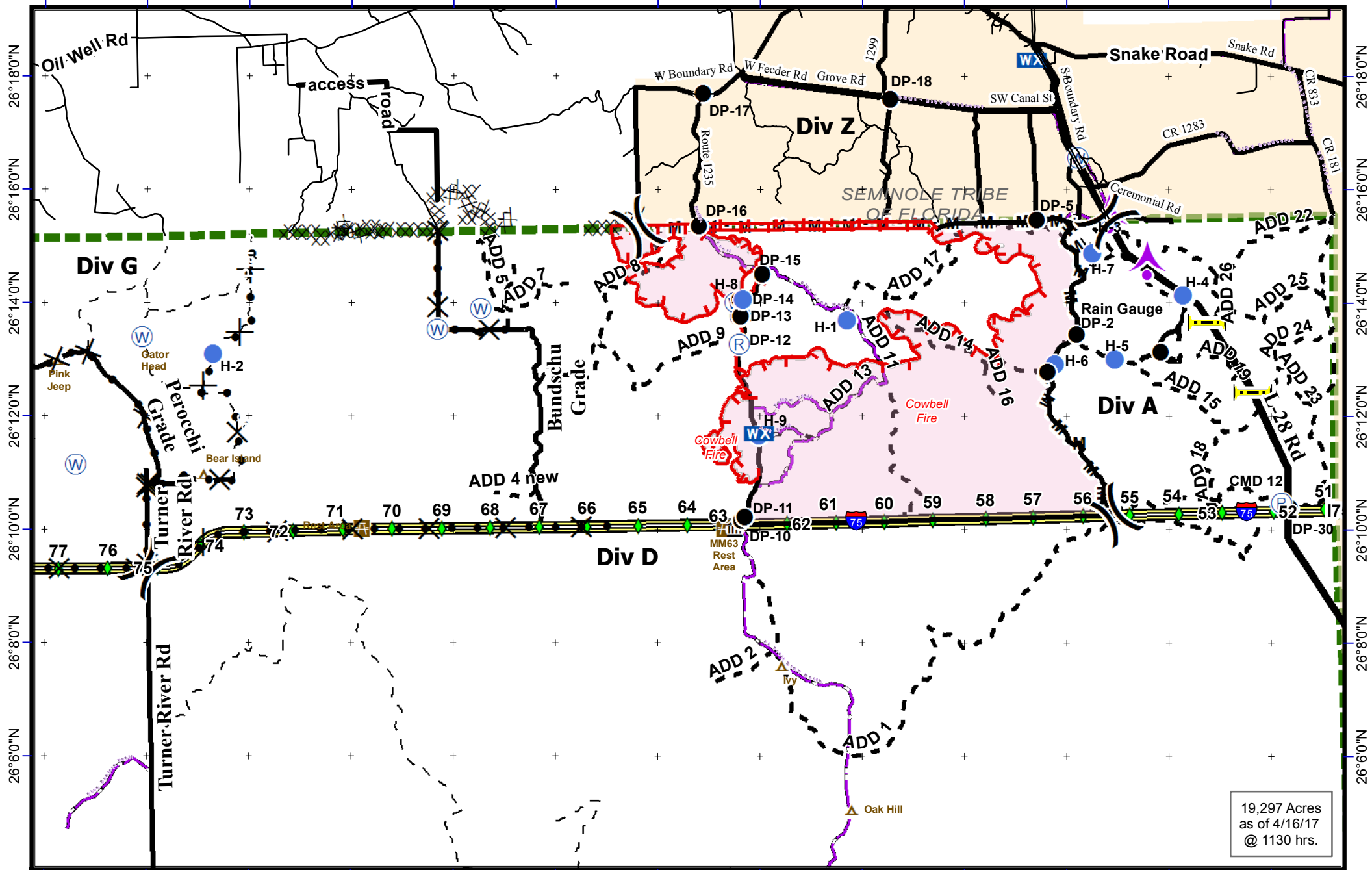


81°24'W 81°20'W 81°16'W 81°12'W 81°8'W 81°4'W 81°0'W 80°56'W 80°52'W 80°48'W

25°44'N

25°44'N

81°18'0"W 81°16'0"W 81°14'0"W 81°12'0"W 81°10'0"W 81°8'0"W 81°6'0"W 81°4'0"W 81°2'0"W 81°0'0"W 80°58'0"W 80°56'0"W 80°54'0"W



19,297 Acres  
as of 4/16/17  
@ 1130 hrs.

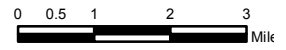
**Cowbell Fire**  
FL-BCP-017033  
**IAP Map**  
April 17, 2017  
Day Shift



- ▬ Uncontrolled Fire Edge
- Completed Line
- M - M** Mastication Line
- Completed Disk Line
- Proposed Line
- ▼ Rain Gauge
- Drop Point
- Helispot
- ( ) Division
- WX Mobile Weather
- Repeater
- ▲ Aerial Hazard
- Private Structures
- NPS Property
- I Bridge Locations
- I-75
- Improved Road
- Primary Buggy Trail



NAD 83 UTM 17



## PHONE LIST - COWBELL FIRE

Position	Name	Phone Number	Position	Name	Phone Number
<b>COMMAND</b>					
Incident Commander	Steve Parrish	850-567-9507	<b>OPERATIONS</b>		
Incident Commander (t)	Lance Elmore	501-520-7276	Lead Ops	Greg Brooks	828-421-5025
Deputy Incident Commander	Marty Bentley	423-584-1682	Planning Ops	Steve Weaver	828-360-2476
Deputy Incident Commander (t)	Debbie Beard	850-524-9966	Planning Ops (t)	Paul Varnedoe	423-650-2184
Liaison Officer	Mike Wright	970-819-2890	Field Ops	Jim Durrwachter	850-566-6681
Public Information	Michelle Burnett	803-920-6167	Field Ops (t)	Mike Davis	936-219-7743
Public Information	Susan Blake	850-509-9952	Division A/D	Ryan Vice	979-215-1936
Public Information (t)	Donald Simon	910-975-1895	Division G	Chuck Alluisi	970-962-9466
Safety Officer	Buddy Kelly	850-447-1344	Division Z	Chad Cook	828-360-4985
Safety Officer	Mark Sullivan	205-531-7183	Division Z	Heath Thomas	501-208-7077
Safety Officer (t)	Ken Gordon	850-688-4474	Division Initial Attack	Kris Croddy	520-275-6747
AFMO	Byron Hart	850-264-9567		Micah Johnson	360-301-4728
<b>PLANNING</b>			<b>AIR OPERATIONS</b>		
Chief	Dave Berens	601-319-6823	Air Operation Branch Director	Mike Rock	606-813-9750
Chief	Dave Dobbs	928-699-5706	<b>LOGISTICS</b>		
Resource Unit Leader	Melonie Sellers	601-508-8997	Chief	Chris Alford	571-334-8549
Resource Unit Leader (t)	E.J. Bunzendahl	859-556-2347	Chief (t)	Tom Phillips	936-635-7154
Situation Unit Leader	Jeff DeMatteis	601-415-9080	Deputy	Susan Cornett	903-930-5321
Situation Unit Leader (t)	Carol O'Bryan	903-263-8704	Ground Support Unit Leader	Michael Howarth	936-414-2697
Fire Behavior Analyst	Gary Jarvis	251-288-1084	Ground Support Unit Leader (t)	Kevin Wagner	479-243-6649
Fire Behavior Analyst (t)	Kelly Cagle	336-302-0343	Ground Support Unit Phone		772-631-2568
Fire Behavior Analyst (t)	Brenda Dale	906-280-3398	Equipment Manager (t)	Jason McCann	865-223-4415
Air Resource Advisor	Andrea Holland	970-274-0010	Ordering Manager	Sherri Kite	850-209-2150
READ	Phil Wilson	406-871-1907	Receiving & Distribution	Chris Combs	727-992-0046
READ	JoAnne Young	970-422-2246	Base Camp Manager	Don Rumback	620-899-3376
IMET	Steven Ippoliti	954-826-9405	Communications	George Rosenthal	936-707-1832
GISS	Chris Evans	928-273-4203	Communications	Ron Regan	828-772-8514
GISS (t)	Jeff Adams	361-205-4744	Comms Trailer		772-631-2573
Demob		239-658-0157	Medical Unit Leader	Gene-Paul Matson	434-665-0444
Check In	Jeff Turner	865-684-0095	Security Manager	Sasha Herrin	239-300-5755
Training Specialist	John Davis	231-878-0074	Security Manager (t)	RJ Seehase	414-739-5696
Compter Tech	Jerry Dronberger	479-747-7020	Security	Ryan Maier	352-302-6117
Compter Tech (t)	Nikita Carty	305-878-997	Security	Chris Kelly	978-580-9245
			Security	Bain Bannon	318-446-1759
<b>FINANACE</b>			Security	Sam Maldonado	909-522-6905
Chief	Wanda Kelley	423-584-1472	Security	Stanley Garner	352-672-1036
Chief (t)	Holly Cyprian	928-919-3027			
Time Unit Leader	Laura Wilson	765-427-7564			
Time Unit Leader (t)	Sherise Foster	919-943-7843			
Comp/Claims	Terri McDonald	352-454-5385			
Equipment Time Recorder (t)	Donna Line	706-474-3216			
Personel Time Recorder	Sherise Foster	919-943-7843			







## UNIT LOG (ICS FORM 214-CG)

**Purpose.** The Unit Log records details of unit activity, including strike team activity or individual activity. These logs provide the basic reference from which to extract information for inclusion in any after-action report.

**Preparation.** A Unit Log is initiated and maintained by Command Staff members, Division/Group Supervisors, Air Operations Groups, Strike Team/Task Force Leaders, and Unit Leaders. Completed logs are submitted to supervisors who forward them to the Documentation Unit.

**Distribution.** The Documentation Unit maintains a file of all Unit Logs. All completed original forms MUST be given to the Documentation Unit.

<u>Item #</u>	<u>Item Title</u>	<u>Instructions</u>
1.	Incident Name	Enter the name assigned to the incident.
2.	Check-In Location	Enter the time interval for which the form applies. Record the start and end date and time.
3.	Unit Name/Designators	Enter the title of the organizational unit or resource designator (e.g., Facilities Unit, Safety Officer, Strike Team).
4.	Unit Leader	Enter the name and ICS Position of the individual in charge of the Unit.
5.	Personnel Assigned	List the name, position, and home base of each member assigned to the unit during the operational period.
6.	Activity Log	Enter the time and briefly describe each significant occurrence or event (e.g., task assignments, task completions, injuries, difficulties encountered, etc.)
7.	Prepared By	Enter name and title of the person completing the log. Provide log to immediate supervisor, at the end of each operational period.
	Date/Time	Enter date (month, day, year) and time prepared (24-hour clock).

### Medical Incident Report- "9 Line"

**FOR ALL MEDICAL EMERGENCIES: IDENTIFY ON SCENE INCIDENT COMMANDER BY NAME AND POSITION AND ANNOUNCE "MEDICAL EMERGENCY" TO INITIATE RESPONSE FROM IMT COMMUNICATIONS/DISPATCH.**

Use items one through nine to communicate situation to communications/dispatch.

**1. CONTACT COMMUNICATIONS/DISPATCH - Comms Trailer Phone (772-631-2573)**

Radio Call Sign "784" for Life Threatening Emergencies on the Oasis or Carns repeater or by phone at 1-800-788-0511

*Ex: "Communications, Div. Alpha. Stand-by for Priority Medical Incident Report." (If life threatening request designated frequency be cleared for emergency traffic.)*

**2. INCIDENT STATUS: Provide incident summary and command structure.**

Nature of Injury/Illness		<i>Describe the injury (Ex: Broken leg with bleeding)</i>
Incident Name		<i>Geographic Name + "Medical" (Ex: Trout Meadow Medical)</i>
Incident Commander		<i>Name of IC</i>
Patient Care		<i>Name of Care Provider (Ex: EMT Smith)</i>

**3. INITIAL PATIENT ASSESSMENT: Complete this section for each patient. This is only a brief, initial assessment. Provide additional patient info after completing this 9 Line Report.**

Number of Patients:	Male / Female	Age:	Weight:
Conscious? <input type="checkbox"/> YES <input type="checkbox"/> NO = MEDEVAC!			
Breathing? <input type="checkbox"/> YES <input type="checkbox"/> NO = MEDEVAC!			
Mechanism of Injury: <i>What caused the injury?</i>			
Lat/Long (Datum NAD83)			

**4. SEVERITY OF EMERGENCY, TRANSPORT PRIORITY**

SEVERITY	TRANSPORT PRIORITY
<input type="checkbox"/> URGENT-RED Life threatening injury or illness. <i>Ex: Unconscious, difficulty breathing, bleeding severely, 2° – 3° burns more than 4 palm sizes, heat stroke, disoriented.</i>	Ambulance or MEDEVAC helicopter. Evacuation need is IMMEDIATE.
<input type="checkbox"/> PRIORITY-YELLOW Serious Injury or illness. <i>Ex: Significant trauma, not able to walk, 2° – 3° burns not more than 1-2 palm sizes.</i>	Ambulance or consider air transport if at remote location. Evacuation may be DELAYED.
<input type="checkbox"/> ROUTINE-GREEN Not a life threatening injury or illness. <i>Ex: Sprains, strains, minor heat-related illness.</i>	Non-Emergency. Evacuation considered Routine of Convenience.

**5. TRANSPORT PLAN:**

Air Transport: (Agency Aircraft Preferred)

<input type="checkbox"/> Helispot	<input type="checkbox"/> Short-haul/Hoist	<input type="checkbox"/> Life Flight	<input type="checkbox"/> Other
Ground Transport:			
<input type="checkbox"/> Self-Extract	<input type="checkbox"/> Carry-Out	<input type="checkbox"/> Ambulance	<input type="checkbox"/> Other

**6. ADDITIONAL RESOURCE/EQUIPMENT NEEDS:**

<input type="checkbox"/> Paramedic/EMT(s)	<input type="checkbox"/> Crew(s)	<input type="checkbox"/> SKED/Backboard/C-Collar
<input type="checkbox"/> Burn Sheet(s)	<input type="checkbox"/> Oxygen	<input type="checkbox"/> Trauma Bag
<input type="checkbox"/> Medication(s)	<input type="checkbox"/> IV/Fluid(s)	<input type="checkbox"/> Cardiac Monitor/AED
<input type="checkbox"/> Other (i.e. splints, rope rescue, wheeled litter)		

**7. COMMUNICATIONS:**

Function	Channel Name/Number	Receive (Rx)	Tone/NAC *	Transmit (Tx)	Tone/NAC *
COMMAND	CARNS Rpt Channel 1	172.4250	1035	170.1000	1035
COMMAND	OASIS Rpt Channel 2	172.4250	1035	171.6250	1035
COMMAND	CMD Channel 12	166.6125	No Tone	168.4000	110.9
AIR-TO-GRND	AG/85 Channel 10	168.3250	No Tone	168.3250	No Tone
TACTICAL					

\*(NAC for digital radio system)

**8. EVACUATION LOCATION:**

Lat/Long (Datum NAD83) <i>EX: N 40 42.45' x W 123 03.24'</i>	
Patient's ETA to Evacuation Location:	
Helispot/Extraction Size and Hazards:	

**9. CONTINGENCY:**

**Considerations:** *If primary options fail, what actions can be implemented in conjunction with primary evacuation method? Be thinking ahead...*

**REMEMBER:** **Confirm ETA's of resources ordered  
Act according to your level of training  
Be Alert. Keep Calm. Think Clearly. Act Decisively.**