



# Incident Action Plan

Day Operational Period

Tuesday

4/18/17

0800-2000

## Cowbell Fire

21,156 acres

52% contained

FL-BCP-017033

PPKX14 (1502)

PFFSKX14017001

FFF2000000KX140



QR CODE  
INCIDENT MAP

INCIDENT OBJECTIVES	1. Incident Name  <b>Cowbell Fire</b>	2. Date Prepared <b>4/17/17</b>	3. Time Prepared <b>1700</b>
4. Operational Period <b>4/18/17 0800 - 2000</b>			
5. General Control Objectives For The Incident <u>Objectives for the Incident:</u> <ul style="list-style-type: none"> <li>• Protection of human life is top priority through the use of sound risk management decisions that are commensurate with values at risk.</li> <li>• Protect private property and infrastructure, federal facilities, critical transportation corridors, recreational and cultural resource values, T&amp;E species and their habitat (e.g. Florida Panther, Florida bonneted bat, Red-Cockaded Woodpecker), and wilderness values through coordination with READS and following MIST Tactics on initial and extended attack fires.</li> <li>• Provide opportunities to communicate and educate the public on the role of fire in the BCP and FPR ecosystems through social media and other outlets.</li> <li>• Provide training opportunities for Preserve, State, and local federal fire agency personnel to actively enhance successional planning of future firefighting personnel.</li> <li>• Sustain and enhance relationships with the people we serve.</li> </ul>			
<u>Control Objectives:</u> <ul style="list-style-type: none"> <li>• Utilize confine, contain, and point source protection strategies and tactics that commit responders only to operations where and when they can be successful.</li> <li>• In order to minimize impacts to high values including Seminole and Miccosukee tribal lands, Sanctuary community, and private land within and near to the boundaries of the Big Cypress National Preserve and Florida Panther Wildlife Refuge keep fire: <ul style="list-style-type: none"> <li>○ West of Add 14 and Add 17 on the eastern side</li> <li>○ South of the Preserve boundary on the northern side</li> <li>○ North of Interstate 75 on the south side</li> <li>○ East of State Highway 29 on the west side</li> </ul> </li> <li>• Provide initial attack for Big Cypress National Preserve and Florida Panther Refuge in coordination with local resources.</li> <li>• Minimize smoke impacts on I-75, State Road 29 and US Highway 41 in order to avoid safety threats to the public.</li> </ul>			
6. Weather forecast for Period High pressure is slowly weakening. While the general wind will continue to be easterly, it will not be quite as gusty, but still around 10 mph. Moisture will be on the rise, allowing for a better chance of showers. While thunderstorms are not likely over the burn area, an isolated cell cannot be ruled out over South Florida, which could still cause an outflow boundary which could affect the fire. Also, any showers that develop, may be heavier, and may also produce some brief gusty wind.			
7. General Safety Message  Look up, look down, look all around for hazards, recognize them and mitigate them.			
8. ATTACHMENTS (X IF ATTACHED) <input checked="" type="checkbox"/> Organization List - ICS 203 <input checked="" type="checkbox"/> Medical Plan - ICS 206                      [ ] _____ <input checked="" type="checkbox"/> Division Assignment Lists - ICS 204 <input checked="" type="checkbox"/> Incident Map                      [ ] _____ <input checked="" type="checkbox"/> Communications Plan - ICS 205 <input checked="" type="checkbox"/> Traffic Plan                      [ ] _____			
9. Prepared By (Planning Section Chief)  <b>Terry Pierce</b>	10. Approved By (Incident Commander)  <b>Mike Wilkins</b>		

ORGANIZATION ASSIGNMENT LIST		9.	Operations Section	
1. Incident Name  <b>COWBELL FIRE</b>		Ops Section Chief		Paul Reynolds
		Strategic Operations		Jim Durrwachter
		Ops Section Deputy		Dwight Snow
		Planning Ops		Michael Heard
2. Date	3. Time	Planning Ops (t)		Paul Vernedoe
04/17/17	1700			
4. Operational Period		<b>a. Divisions / Groups</b>		
04/18/17 DAY (0800 – 2000)		Division	A/D	Kerry Clark
<b>5. Incident Commander and Staff</b>		Division	G	Vic Doig
Incident Commander	Mike Wilkins, Andy Baker (t)	Division	Z	Tim Nutley
Deputy Incident Commander	Mark Morales	Group	Initial Attack	Kris Wilson/ Kris Croddy
Liaison Officer	Andy Gaston	Group	Strucutre Protection	Shawn Nagle
Safety Officer	Brian Beisel	Group	Parliament and Misc Fires	Unstaffed
Information Officer	Terry Krasko, Michael Williams			
<b>6. Agency Reps</b>				
Agency Administrator	Tammy Whittington (Big Cypress)			
Agency Administrator	J.D. Lee (Big Cypress)			
Chief of Fire & Aviation	Jordan McKnight (Big Cypress)			
AFMO	Byron Hart (BICY/Panther)			
Zone FMO	Cass Palmer (Panther)			
Collier Co. Sheriff	Lt. Jake Walker	<b>b. Air Operations Branch</b>		
Seminole Tribe of Florida	Matt Flying	Air Operations Branch Director	John Bragg	
Florida Highway Patrol	Lt. Joseph Bowers	Air Operations Branch Director (t)	Mike Mowry	
Greater Naples Fire Rescue	J. Nolan Sapp	Air Support Group Supervisor	Matt Clinton	
FFS Collier Co Forest Area Sup	Tony Curella	Air Tactical Group Supervisor	Steve Little	
FFS Hendry Co Forest Area Sup	Joe Lecea	Oasis Helibase Manger	Mark Oetzmann	
<b>7. Planning Section</b>				
Chief	Terry Pierce/ Dave Dobbs			
Resources Unit	Sue Wilder, Steven Wells			
Situation Unit	Michael Williams			
FBAN	Glenn Fortenberry	<b>8. Logistics Section</b>		
Air Resource Advisor	Andrea Holland	Chief	Cindy Schiffer, Bill Liskowsky, Terry Holsclaw (t) , Chris Alford (t)	
READ	JoAnne Young	Supply Unit	Bill Kitchings	
IMET	Steven Ippoliti	Facilities Unit	Jared Baker (t), Jamiel Jones (t)	
GISS	Alan Smith, Katy McClurdy	Ground Support	Joe Emberson, Randy Chapin	
Demob Unit	Henry Hickerson	Ordering Manager	Sandy Rhodes, Natalie Broce	
Status Check-In	Allison Cochran	Communications Unit	Mark Spann	
Training	Debra Burgos/ Mary Leathers	Medical Unit Leader	Shanna Ellis	
ITSS	Dan Leduc/Scott Grest	Security Manager	David Clark, RJ Seehase (t)	
Documentation	Bob Sobczak (t)			
<b>10. Finance Section</b>				
Chief	Randee Olsen			
Time Unit	Sandra Fix			
Cost Unit	Susan Deimel			
Comp/Claims	Donna Rogers			
Procurement	Leslie Solberg			
Personnel Time Recorder	Pedra Setlich, Kelly Donaldson			



# Fire Weather Forecast

FORECAST NO:	16	NAME OF FIRE:	Cowbell Fire
PREDICTION FOR:	Tuesday Day Shift	UNIT:	Big Cypress National Preserve
SHIFT DATE:	April 18, 2017	Incident Meteorologist:	<i>Steven Ippoliti</i>
FORECAST ISSUED:	1900 April 17, 2017		954-826-9405

---

**DISCUSSION:** High pressure has weakened, and some moisture has returned to the region. Together, with a Gulf sea breeze, which may progress inland, likely only to Hwy 29, will provide an environment for the possibility of showers and thunderstorms across the area today and Wednesday. The sea breeze will disrupt the weak easterly wind in the afternoon, causing wind to become more variable. By Thursday dry air begins to return to the area.

**TODAY (TUESDAY DAY SHIFT):**

**WEATHER:** Mostly sunny, becoming mostly cloudy in the afternoon. A few showers & thunderstorms possible.  
**WIND (20 FT):** Light & variable becoming east at 8 to 12 mph in the late morning, and variable in the mid-afternoon.  
**MAX TEMPERATURES:** 84 to 87.  
**MIN RH:** 50%.  
**LAL:** 2      Chance measurable rain: 35%  
**DISPERSION:** 48 MAX **MIXING HEIGHT:** 5000 **TRANSPORT WINDS:** East southeast 5 to 10 mph in afternoon.

-----  
**TONIGHT (TUESDAY NIGHT):**

**WEATHER:** Partly cloudy. Showers and Isolated thunderstorms possible, mainly in the evening. Patchy fog possible.  
**WIND (20 FT):** East 8 mph in the evening. Northeasterly drainage developing at 1 to 3 mph after midnight.  
**MIN TEMPERATURES:** 61 to 65F.  
**MAX RH:** 98 to 100%. LVORI 9 (max).  
**LAL:** 2      Chance measurable rain: 15%.

-----  
**WEDNESDAY:**

**WEATHER:** Partly cloudy. A few showers and isolated thunderstorms possible.  
**WIND (20 FT):** Light & variable becoming east at 8 to 12 mph in the late morning, and variable in the mid-afternoon.  
**MAX TEMPERATURES:** 83 to 86F.  
**MIN RH:** 48%.  
**LAL:** 2      Chance measurable rain: 25%.  
**DISPERSION:** 48 MAX **MIXING HEIGHT:** 5000 **TRANSPORT WINDS:** East Southeast 5 to 10 mph.

-----  
**GENERAL OUTLOOK THURSDAY THROUGH SATURDAY:** A weak, generally easterly flow around 10 mph, will continue into the weekend. Slight chance of showers and thunderstorms on Thursday. A drier air mass will move into the area for Friday and Saturday, with RH values possibly dropping to around 35% on Saturday.

**WIND:** East 5 to 10 mph then northerly drainage at night.  
**WEATHER/TEMPERATURE:** A slight chance of showers and thunderstorms Thursday. Becoming dry on Friday. Highs in the mid 80's in the low 60's.  
**MIN RH:** 45% Thursday. Around 40% Friday and 35% Saturday.  
**NIGHT TIME RECOVERY:** 95% to 100% each night.



Current Incident  
area RAWs  
conditions

Sunrise Tuesday: 6:59 am  
Sunset Tuesday: 7:51 pm

Source: US Naval Observatory

## FIRE BEHAVIOR FORECAST

<b>FORECAST NUMBER: #15</b>	<b>TYPE OF FIRE: Wildland</b>
<b>FIRE NAME: Cowbell</b>	<b>OPERATIONAL PERIOD: 04/18/2017</b>
<b>DATE ISSUED: 04/17/2017</b>	<b>TIME ISSUED: 2000</b>
<b>UNIT: Big Cypress Preserve</b>	<b>WRITTEN : Brenda Dale SIGNED: Glen Fortenberry</b>

### **FUEL ASSUMPTIONS:**

Primary fuels consist of grass, shrub, pine overstory with shrub palmetto understory and timber litter. Current fuel conditions are favorable for very active fire behavior within the grass and shrub fuels. Fire activity to greatly diminish in the wide cypress strands. The current drought conditions have led to both live and dead fuel moistures to reach levels of concern. Expect all fuels to burn readily, including those that appear green.

### **The fuel moisture for today is:**

Calculated 1 hr fuel 9%, 10 hr fuel 10%, 100 hr fuel 15%, 1000 hr fuel 16%

**Critical fire behavior thresholds:** 1 HR Fuel Moisture <6%, RHs below 40% and a Dispersion Index greater than 60.

**WEATHER:** Mostly sunny, becoming mostly cloudy in the afternoon. A few showers & thunderstorms possible.  
**WIND (20 FT):** Light & variable becoming east at 8 to 12 mph in the late morning, and variable in the mid-afternoon.  
**MAX TEMPERATURES:** 84 to 87.  
**MIN RH:** 50%.  
**LAL:** 2      Chance measurable rain: 35%  
**DISPERSION:** 48 **MAX MIXING HEIGHT:** 5000 **TRANSPORT WINDS:** East southeast 5 to 10 mph in afternoon.

### General Fire Behavior Forecast:

Any areas that receive rainfall will see creeping and smoldering fire behavior. In areas that do not receive rain, do not let higher RHs cloud your perception, these fuels are still drought stricken and support high intensity fire behavior with 1/4 mile rates of spread, and 1/3 mile spotting in the pine/ palmetto.

### Specific:

**Cowbell:** The fire will move in the direction the wind is blowing as long as it has available fuels in front of it. Once a fire gets established and produces a column it will continue to run until it runs into unburnable fuels (cypress strand).

**Initial Attack:** Heavy resistance can be expected on any new starts in all fuel types. Expect rapid rates of spread, with high intensities in pine/palmetto fuel type and anticipate some spotting to challenge your control efforts.

### **PREDICTIONS FOR MOST ACTIVE TIME OF PEAK BURNING PERIOD USING WEATHER FROM INCIDENT IMET**

<b>Fuel Model</b>	<b>Fire Behavior</b>
Grass	ROS 20 to 40 ch/hr, FL 4-7 ft.
Shrub	ROS 10 to 20 ch/hr, FL 6-9 ft
Timber Litter (Cypress)	ROS 2 to 4 ch/hr, FL 2-3 ft
Spotting	.3 miles
Probability of Ignition	40% in all models

**AIR OPERATIONS:** There is a potential for morning fog and an inversion that will break mid-morning.

**FIRE BEHAVIOR SAFETY:** Keep informed on fire weather conditions and forecasts. Changes in wind direction will cause a change in fire behavior and spread direction. Maintain good situational awareness as winds change.

# *HEALTH & SAFETY MESSAGE*

Cowbell Fire

April 18, 2017

## **Protection of human life is the top priority through the use of sound risk management**

Driving is the most common daily activity for incident personnel that creates risk exposure. Resources are here from all parts of the country and the roads in this area are not familiar to all drivers. You may also be driving a vehicle you are not used to. Interstate 75 traffic is moving at high speeds and they are not slowing down for you. Traffic in the area of Big Cypress National Preserve can be very heavy during weekends due to the local attractions. The roads near the fires can have soft shoulders so all drivers need to exercise caution as meeting other vehicles, especially large heavy vehicles.

Pace and hydration go together. Take a couple of days to let your body acclimate to the weather conditions we are working and don't push to hard. Recognize the signs of heat related illnesses and understand that confusion may be one of the symptoms. Review page 103 in the IRPG for the different signals to watch for and treatments. Be sure to hydrate throughout the entire day.

Snags are common on the fires that have been worked on this incident. This hazard is more dangerous due to the low fuel moisture since large fuels are igniting more easily. This results in higher probability of snags falling that would occur normally as the base and roots of the trees can burn through more easily.

Don't let the lower fire activity lull you into thinking the fire behavior will stay low. The potential during the week will pick up as the humidities drop. Let's use the time to prepare for when the fire decides to pick up and become more active.

Initial attack response continues to occur. Be sure LCES is in place prior to engagement, everyone receives a briefing, and PPE used fits the activity.

## **STOP – THINK – TALK – ACT**

## Division/Group Assignment List (ICS 204 WF)

<b>1. Incident Name:</b>			<b>3.</b>			
Cowbell Fire			Branch:		Division/Group	
<b>2. Operational Period:</b>					<b>A/D</b>	
Date/Time From: 04/18/17 0800	Date/Time To: 04/18/17 2000					
<b>4. Operations Personnel</b>						
AIR ATTACK SUPERVISOR			OPERATIONS		Paul Reynolds	
			STRATEGIC OPERATIONS		Jim Durrwachter	
			DEPUTY OPERATIONS		Dwight Snow	
DIVISION/GROUP SUPERVISOR	Kerry Clark		PLANNING OPERATIONS		Michael Heard Paul Varnedoe (t)	
<b>5. Resources Assigned this Period</b>						
Strike Team / Task Force / Resource Designator	LWD	Leader	Number Persons	Drop Off PT./Time	Pick Up PT./Time	
MOD Great Smokey	O-102	4/18	Josh Nicholas	4	ICP/0800	ICP/2000
MOD BIFZ #2	O-106	5/1	Sam DeLong	8	ICP/0800	ICP/2000
EMTF	O-18	4/22	Bob Bruington	1	ICP/0800	ICP/2000
<b>6. Control Operations/Work Assignments:</b>						
<b>Task:</b>						
<ul style="list-style-type: none"> <li>Patrol and mop up 25 ft. from control line</li> <li>Monitor and patrol by air</li> </ul>						
<b>Purpose:</b>						
<ul style="list-style-type: none"> <li>To keep fire confined and contained west of ADD 17/ADD 14 on east flank of fire</li> <li>To protect structures</li> <li>To alert FHP of potential impact to I-75</li> <li>Keep fire contained north of I-75</li> </ul>						
<b>End State:</b>						
<ul style="list-style-type: none"> <li>Control fire perimeter west of ADD 17/ADD 14 to eliminate threat to Sanctuary area structures</li> <li>Minimize risk to public traveling on I-75</li> <li>Confine fire perimeter to reduce threats to resource values at risk</li> </ul>						
<b>7. Special Instructions:</b> Establish and maintain LCES during operational period. Do not engage in fire suppression activities along I-75 shoulders unless traffic hazards have been mitigated						
<b>8. Division/Group Communication Summary</b>						
Function	Channel	RX Frequency N/W	RXTone/NAC	TX Frequency N/W	TX Tone/NAC	Mode
COMMAND	12	166.6125		168.4000	110.9	A
COMMAND	13	168.7000		170.9750	110.9	A
TACTICAL	4	168.6000		168.6000		A
AIR TO GROUND	10	168.3250		168.3250		A
<b>9. Prepared By (Resource Unit Leader)</b>			<b>Approved By (Planning Section Chief)</b>			<b>Date</b>
/s/Sue Wilder/Steve Wells			Terry Pierce			04/17/17
					<b>Time</b>	16:00

## Division/Group Assignment List (ICS 204 WF)

<b>1. Incident Name:</b>			<b>3.</b>			
Cowbell Fire			<b>Branch:</b>		<b>Division/Group</b>	
<b>2. Operational Period:</b>			<b>G</b>			
Date/Time From: 04/18/17 0800	Date/Time To: 04/18/17 2000					
<b>4. Operations Personnel</b>						
AIR ATTACK SUPERVISOR			OPERATIONS		Paul Reynolds	
			STATEGIC OPERATIONS		Jim Durrwachter	
			DEPUTY OPERATIONS		Dwight Snow	
DIVISION/GROUP SUPERVISOR	Victor Doig		PLANNING OPERATIONS		Michael Heard Paul Varnedoe (t)	
<b>5. Resources Assigned this Period</b>						
Strike Team / Task Force / Resource Designator	LWD	Leader		Number Persons	Drop Off PT./Time	Pick Up PT./Time
TFLD O-172	4/30	Allan Kirby		1	ICP/0800	ICP/2000
TFLD (t) O-173	4/30	Jared Nobles		1	ICP/0800	ICP/2000
TFLD O-178	4/30	George Allalunis		1	ICP/0800	ICP/2000
ENG 6 Firetrax E-86	4/19	Carlos Gutierrez		3	ICP/0800	ICP/2000
ENG 6 Wildlands Fire Service E-87	4/19	Brian Terry		3	ICP/0800	ICP/2000
ENG6 Wildlands Fire Service E-121	4/25	David Hogrefe		3	ICP/0800	ICP/2000
Slimmer Suppression Buggy E-80	4/18	Matt Mateo		3	ICP/0800	ICP/2000
BICY Suppression Buggy #3 E-65	4/18	Josh Manley		1	ICP/0800	ICP/2000
Duece Buggy IA #607 E-89	4/23	JT Sohr		2	ICP/0800	ICP/2000
Masticator E-6	4/30	Carlos DelCruze		1	ICP/0800	ICP/2000
Masticator GEO-BOY E-83	4/24	Rob Shackelford		1	ICP/0800	ICP/2000
HEQB O-124	4/24	Jesse Barr		1	ICP/0800	ICP/2000
SOFR O-63	4/19	David Dallison		1	ICP/0800	ICP/2000
READ	4/25	Jo Anne Young		1	ICP/0800	ICP/2000
EMTF	4/22	Jim Stout		1	ICP/0800	ICP/2000
<b>6. Control Operations/Work Assignments:</b>						
<b>Task:</b>						
<ul style="list-style-type: none"> <li>Patrol and mop up 25 ft. from control line</li> <li>Masticate contingency line and alternate contingency line</li> <li>Continue monitoring and using aerial support to contain slop overs on Nobles Grades</li> <li>Monitor Kissimmee Billy Strand using aerial support</li> </ul>						
<b>Purpose:</b>						
<ul style="list-style-type: none"> <li>To keep fire contained east of Kissimmee Billy Strand</li> <li>To establish a contingency line and alternate line</li> </ul>						
<b>End State:</b>						
<ul style="list-style-type: none"> <li>Confine fire perimeter to reduce threats to resource values at risk</li> </ul>						
<b>7. Special Instructions:</b> Establish and maintain LCES during operational period. Coordinate with Field OPS in the event swing shift resources are required. Utilize MIST tactics as outlined in Fire Operations Guide for BICY. Follow tracked vehicle requirement restrictions.						
<b>8. Division/Group Communication Summary</b>						
Function	Channel	RX Frequency N/W	RXTone/NAC	TX Frequency N/W	TX Tone/NAC	Mode
COMMAND	13	168.7000		170.9750	110.9	A
COMMAND	15	173.0375		167.3250	110.9	A
TACTICAL	5	168.2500		168.2500		A
AIR TO GROUND	10	168.3250		168.3250		A
<b>9. Prepared By (Resource Unit Leader)</b>		<b>Approved By (Planning Section Chief)</b>			<b>Date</b>	<b>Time</b>
/s/Sue Wilder/Steve Wells		Terry Pierce			04/17/17	16:00



## Division/Group Assignment List (ICS 204 WF)

<b>1. Incident Name:</b>				<b>3.</b>			
Cowbell Fire				<b>Branch:</b>		<b>Division/Group</b>	
<b>2. Operational Period:</b>				<b>Z</b>			
Date/Time From: 04/18/17 0800		Date/Time To: 04/18/17 2000					
<b>4. Operations Personnel</b>							
AIR ATTACK SUPERVISOR				OPERATIONS		Paul Reynolds	
				STRATEGIC OPERATIONS		Jim Durrwachter	
				DEPUTY OPERATIONS		Dwight Snow	
DIVISION/GROUP SUPERVISOR		Tim Nutley		PLANNING OPERATIONS		Michael Heard Paul Varnedoe (t)	
<b>5. Resources Assigned this Period</b>							
Strike Team / Task Force / Resource Designator		LWD	Leader		Number Persons	Drop Off PT./Time	Pick Up PT./Time
HC1 Asheville	C-6	4/18	Allen Mitchell		18	ICP/0800	ICP/2000
TFLD	O-61	4/19	Mario Marquez		1	ICP/0800	ICP/2000
MOD Buffalo	O-21	4/23	Josh Hampton		5	ICP/0800	ICP/2000
ENG3 #51	E-99	4/23	Mike Anderson		5	ICP/0800	ICP/2000
ENG3 #321	E-98	4/23	Kenneth Vaughn		5	ICP/0800	ICP/2000
ENG3 #335	E-100	4/30	Bryan Reddish		5	ICP/0800	ICP/2000
Seminole Suppression Buggy	E-60	4/16	Chris Kemp		2	ICP/0800	ICP/2000
Seminole Suppression Buggy	E-139	4/18	Jeff Radovic		1	ICP/0800	ICP/2000
Transport Buggy	E-38	4/18	Clint Weeks		1	ICP/0800	ICP/2000
Transport Buggy	E-39	4/18	Captain Steve-Clinton Weaks		1	ICP/0800	ICP/2000
Transport Buggy	E-40	4/18	Bobby Weeks		1	ICP/0800	ICP/2000
Transport Buggy	E-41	4/18	Victor Robinson		1	ICP/0800	ICP/2000
SOFR	O-89	4/19	John Foley		1	ICP/0800	ICP/2000
READ	O-154	4/25	JoAnne Young		1	ICP/0800	ICP/2000
EMTP	O-36	4/25	Frank Abel		1	ICP/0800	ICP/2000
<b>6. Control Operations/Work Assignments:</b>							
<b>Task:</b>							
<ul style="list-style-type: none"> <li>• Patrol and conduct mop up 25 ft. from control line</li> </ul>							
<b>Purpose:</b>							
<ul style="list-style-type: none"> <li>• To keep fire south of Preserve Boundary and west of ADD 17 to protect private land with structures</li> </ul>							
<b>End State:</b>							
<ul style="list-style-type: none"> <li>• Control fire to eliminate threats to Seminole Tribe of Florida and private property</li> </ul>							
<b>7. Special Instructions:</b> Establish and maintain LCES during operational period. Coordinate with Field OPS in the event swing shift resources are required. Follow tracked vehicle requirements restriction. Utilize MIST tactics as outlined in Fire Operations Guide for BICY.							
<b>8. Division/Group Communication Summary</b>							
Function	Channel	RX Frequency N/W	RXTone/NAC	TX Frequency N/W	TX Tone/NAC	Mode	
COMMAND	12	166.6125		168.4000	110.9	A	
COMMAND	13	168.7000		170.9750	110.9	A	
TACTICAL	8	166.7500		166.7500		A	
AIR TO GROUND	10	168.3250		168.3250		A	
<b>9. Prepared By (Resource Unit Leader)</b>			<b>Approved By (Planning Section Chief)</b>			<b>Date</b>	<b>Time</b>
/s/Sue Wilder/Steve Wells			Terry Pierce			04/17/17	16:00

## Division/Group Assignment List (ICS 204 WF)

<b>1. Incident Name:</b>				<b>3.</b>				
Cowbell Fire				<b>Branch:</b>		<b>Division/Group</b>		
<b>2. Operational Period:</b>				<b>IA</b>				
Date/Time From: 04/18/17 0800		Date/Time To: 04/18/17 2000						
<b>4. Operations Personnel</b>								
AIR ATTACK SUPERVISOR				OPERATIONS		Paul Reynolds		
				STRATEGIC OPERATIONS		Jim Durrwachter		
				DEPUTY OPERATIONS		Dwight Snow		
DIVISION/GROUP SUPERVISOR		Kris Croddy, Kris Wilson		PLANNING OPERATIONS		Paul Varnedoe (t)		
<b>5. Resources Assigned this Period</b>								
Strike Team / Task Force / Resource Designator			LWD	Leader		Number Persons	Drop Off PT./Time	Pick Up PT./Time
T2IA PR-1 C-7			4/28	Roberto Martinez		20	ICP/0800	ICP/2000
<b>Oasis Staging</b>								
TFLD ** O-60			4/19	Harold Kibbe		1	ICP/0800	ICP/2000
ENG6 Big Thickett ** E-57			4/19	Gus Schaefer		2	ICP/0800	ICP/2000
ENG6 CSP661 E-59			4/20	Jason Johnson		2	ICP/0800	ICP/2000
ENG6 Wildlands Fire Service E-122			4/25	Chad Anderson		3	ICP/0800	ICP/2000
BICY Suppression Buggy #1 E-129			4/23	James Ray		1	ICP/0800	ICP/2000
ENG6 KS-PSF #671 E-140			4/28	Kyle Avesing, Andrew Laudie (t)		3	ICP/0800	ICP/2000
<b>Deep Lake Staging</b>								
TFLD O-144			4/24	Willard Worley		1		
TFLD (t) O-177			4/30	David Moore		1	ICP/0800	ICP/2000
ENG6 Attack One E-58			4/19	Kevin Carter		2	ICP/0800	ICP/2000
ENG6 K31 ** E-7			4/29	Jonathan O-Gorman		2	ICP/0800	ICP/2000
BICY Suppression Buggy #6 E-68			4/22	Sam Ashbaugh**		1	ICP/0800	ICP/2000
BICY Suppression Buggy #2 E-64			4/23	Chris Dargan		3	ICP/0800	ICP/2000
SOFR O-135			4/25	Donald Foco		1	ICP/0800	ICP/2000
EMTF			4/22	Gene Paul Matson		1	ICP/0800	ICP/2000
<b>6. Control Operations/Work Assignments:</b>								
<b>Task:</b>								
<ul style="list-style-type: none"> <li>Coordinate with BICY duty officer for notification of newly reported ignitions</li> <li>Coordinate initial attack action with assigned aviation and /or ground assets</li> <li>Determine IA resource prepositioning needs across BICY and FPWR</li> </ul>								
<b>Purpose:</b>								
<ul style="list-style-type: none"> <li>Ensure communications with FL Hwy Patrol regarding smoke on I-75 and Hwy 41</li> <li>Ensure timely response on any IA within BICY and FPWR</li> </ul>								
<b>End State:</b>								
<ul style="list-style-type: none"> <li>Protect human life</li> <li>Minimize environment damage to protect habitat of threatened and endangered species</li> <li>Minimize damage to public and private property</li> </ul>								
<b>7. Special Instructions: **Resources identified for swing shift if needed. Coordinate with Field OPS to determine need. Follow tracked vehicle requirement restrictions. Establish and maintain LCES during operational period. Utilize MIST tactics as outlined in Fire Operations Guide for BICY. EMTF Jim Stout will be staged at ICP/Medical.</b>								
<b>8. Division/Group Communication Summary</b>								
Function	Channel		RX Frequency N/W	RX Tone/NAC	TX Frequency N/W	TX Tone/NAC	Mode	
COMMAND	1		172.4250	1035	170.1000	1035	D	
COMMAND	2		172.4250	1035	171.6250	1035	D	
COMMAND	7		164.6250	1188	163.1500	1188	D	
TACTICAL	9		166.8250		166.8250		A	
AIR TO GROUND	6		169.1125		169.1125		A	
<b>9. Prepared By (Resource Unit Leader)</b>			<b>Approved By (Planning Section Chief)</b>			<b>Date</b>	<b>Time</b>	
/s/Sue Wilder/Steve Wells			Terry Pierce			04/17/17	16:00	

## Division/Group Assignment List (ICS 204 WF)

<b>1. Incident Name:</b>		<b>3.</b>					
Cowbell Fire		<b>Branch:</b>			<b>Division/Group</b>		
<b>2. Operational Period:</b>					<b>Structure Protection</b>		
Date/Time From: 04/18/17 0800	Date/Time To: 04/18/17 2000						
<b>4. Operations Personnel</b>							
AIR ATTACK SUPERVISOR				OPERATIONS	Paul Reynolds		
				STRATEGIC OPERATIONS	Jim Durrwachter		
				DEPUTY OPERATIONS	Dwight Snow		
DIVISION/GROUP SUPERVISOR	Shawn Nagle			PLANNING OPERATIONS	Michael Heard Paul Varnedoe (t)		
<b>5. Resources Assigned this Period</b>							
Strike Team / Task Force / Resource Designator	LWD	Leader			Number Persons	Drop Off PT./Time	Pick Up PT./Time
UNSTAFFED							
<b>6. Control Operations/Work Assignments:</b>							
<b>Task:</b> <ul style="list-style-type: none"> <li>Review structure protection plan.</li> <li>Assess structure protection needs west of the Plains Trail (alternate line) and west of the Perocchi-Bear Island Grade (Contingency line).</li> </ul>							
<b>Purpose:</b> <ul style="list-style-type: none"> <li>Ensure life, property and infrastructure are protected to the extent possible.</li> </ul>							
<b>End State:</b> <ul style="list-style-type: none"> <li>Protect human life.</li> <li>Minimize damage to public and private property and infrastructure.</li> </ul>							
<b>7. Special Instructions:</b> **Resources identified for swing shift if needed. Coordinate with Field OPS to determine need. Follow tracked vehicle requirement restrictions. Establish and maintain LCES during operational period. Utilize MIST tactics as outlined in Fire Operations Guide for BICY. EMTF Jim Stout will be staged at ICP/Medical.							
<b>8. Division/Group Communication Summary</b>							
Function	Channel	RX Frequency N/W	RX Tone/NAC	TX Frequency N/W	TX Tone/NAC	Mode	
COMMAND	1	172.4250	1035	170.1000	1035	D	
COMMAND	2	172.4250	1035	171.6250	1035	D	
COMMAND	7	164.6250	1188	163.1500	1188	D	
TACTICAL	9	166.8250		166.8250		A	
AIR TO GROUND	6	169.1125		169.1125		A	
<b>9. Prepared By (Resource Unit Leader)</b>		<b>Approved By (Planning Section Chief)</b>			<b>Date</b>	<b>Time</b>	
/s/Sue Wilder/Steve Wells		Terry Pierce			04/17/17	16:00	

## Division/Group Assignment List (ICS 204 WF)

<b>1. Incident Name:</b>			<b>3.</b>				
Cowbell Fire			<b>Branch:</b>		<b>Division/Group Parliament/ Misc. Fire Patrol</b>		
<b>2. Operational Period:</b>							
Date/Time From: 04/18/17 0800		Date/Time To: 04/18/17 2000					
<b>4. Operations Personnel</b>							
AIR ATTACK SUPERVISOR				OPERATIONS		Paul Reynolds	
				STRATEGIC OPERATIONS		Jim Durrwachter	
				DEPUTY OPERATIONS		Dwight Snow	
DIVISION/GROUP SUPERVISOR				PLANNING OPERATIONS		Michael Heard Paul Varnedoe (t)	
<b>5. Resources Assigned this Period</b>							
Strike Team / Task Force / Resource Designator			LWD	Leader	Number Persons	Drop Off PT./Time	Pick Up PT./Time
UNSTAFFED							
<b>6. Control Operations/Work Assignments:</b>							
<b>Task:</b>							
<ul style="list-style-type: none"> <li>• Patrol and monitor fires on BICY and FPWR with aviation and ground assets as directed by lead OSC commensurate with values at risk</li> <li>• Monitor fires for further suppression management action</li> </ul>							
<b>Purpose:</b>							
<ul style="list-style-type: none"> <li>• Assure suppression action taken limits environmental impact, consistent with MIST tactics</li> </ul>							
<b>End State:</b>							
<ul style="list-style-type: none"> <li>• Protect human life</li> <li>• Minimize damage to public and private property</li> <li>• Minimize environmental damage to protect habitat of threatened and endangered species</li> </ul>							
<b>7. Special Instructions:</b> Follow tracked vehicle requirement restrictions. Establish and maintain LCES during operational period.							
Utilize MIST tactics as outlined in Fire Operations Guide for BICY.							
<b>8. Division/Group Communication Summary</b>							
Function	Channel	RX Frequency N/W	RXTone/NAC	TX Frequency N/W	TX Tone/NAC	Mode	
COMMAND	7	164.6250	1188	163.1500	1188	D	
TACTICAL	11	166.7250	0659	166.7250	0659	D	
AIR TO GROUND	10	168.3250		168.3250		A	
<b>9. Prepared By (Resource Unit Leader)</b>			<b>Approved By (Planning Section Chief)</b>			<b>Date</b>	<b>Time</b>
/s/Sue Wilder/Steve Wells			Terry Pierce			04/17/17	16:00

# AIR OPERATIONS SUMMARY

OPERATIONAL PERIOD DATE: 04-18-2017

0900-2000

<b>1. INCIDENT NAME:</b> Cowbell	<b>2. PREPARED BY:</b> John Bragg <b>PREPARED DATE/TIME:</b> 04/17/2017 1800	<b>3. Sunrise:</b> 0700 <b>Sunset:</b> 1950
<b>4. REMARKS (Safety Notes, Hazards, Air Operations Special Equipment,, etc.):</b> Medivac Aircraft: <b>6HX</b> MTR- Located along state road 29.Fire Dispatch gets MTR activity every morning Do not over fly structures with external load missions. All aircraft should use strobes and running lights in smoky conditions. Hazards: Snags, non-incident aircraft, and winds.  Contract helicopter working special use permit in North Central portion of BICY. Area identified on pilot briefing board. ATGS has air to air communications.  <b>Cease all operations at sunset</b>		<b>5. Squawk 1255</b>  TFR—7/7786 ZMA FL, Airspace 25 nm NE of Ochopee SFC 3000ft. Contact 118.825  NOTAM – 04/054 – Airspace firefighting aircraft 5nm of (9FL7) SFC 2000ft.

6. PERSONNEL	Phone	7. FREQUENCIES	AM	FM	8. FIXEDWING	Base	
AOBD: John Bragg AOBD-T Mike Mowery ASGS: Matt Clinton	423-483-2798 870-615-0287 208-634-9414	Air/Air Rotor  Air/Air Fixed Wing	123.575  118.825			Air Attack- Air Attack	197GB – Aero Commander MKY 4566M Baron MKY
ATGS: Steve Little ATGS: Jay Lindgren ATGS-T Travis Hart	828-778-2077 406-461-1652 208-739-3817	Air/Ground Cowbell  Air/Ground IA Air/Ground Aerial Ignition		168.3250 RX/TX (A)  169.1125 RX/TX (A) 167.9500 RX/TX (A)	T-801 T-493	Seat –IMM, Start 0900 Seat —IMM, Start 0900	
<u>Oasis Helibase (9FL7)</u> HEB1 Mark Oetzmann HEB1-T Jay Thatcher <u>Immokalee Airport</u> Seat Manager Jack Benzilio HMGB Connie Fox HEB2 – Brian Butler	239-695-0278 208-315-5030 970-903-7922  970-799-1232 303-854-8470 970-946-8068			169.7250 RX N1514  163.3875 TX N1738			
Big Cypress Fire Dispatch	239-695-9280 x 104	Air/Guard  Deck		168.6250 RX/TX Tone 110.9  166.7750			

**9. HELICOPTERS (Use Additional Sheets As Necessary)**

FAA N# or Designator	TY	MAKE/MODEL	BASE	START	REMARKS	FAA N# or Designator	TY	MAKE/MODEL	BASE	START	REMARKS
206RW	3	Bell 206	Oasis	0900	Recon/Bucket	1KA	1	K-MAX	Oasis	0900	Bucket
28HX	2	Bell 205	Oasis	0900	Crew/Bucket	612CK	1	S-61	IMM	0900	Tanked
16HX	2	Bell 205	Oasis	0900	Crew/Bucket	718	1	CH-54	IMM	0900	Tanked
0HH	3	Bell 206	Oasis	0800	Map/Recon						

**10. TASK/MISSION/ASSIGNMENT (Use ICS-220a if additional space needed; Type/Function includes: Air Tactical, Retardant, Recon, Personnel Transport, Water Dropping, etc.)**

TYPE/FUNCTION	NAME OF PERSONNEL OR CARGO (if applicable) OR INSTRUCTIONS FOR TACTICAL AIRCRAFT	MISSION START	FLY FROM	FLY TO
Mapping	As Requested	0930		
Reconnaissance	As Requested	0930		
Water Drops	As Requested	0930		

## INCIDENT RADIO COMMUNICATIONS PLAN (ICS 205)

3. Operational Period: DAY									
Date/Time From: 04/18/2017 0800			Date/Time To: 04/18/2017 2000						
Zone Group	Ch #	Function	Assignment	RX Freq	RX Tone/NAC	TX Freq	TX Tone/NAC	Mode (A,D, or M)	Remarks
	1	CARNS RPT	Initial Attack	172.4250	1035	170.1000	1035	D	Talk Group 1
	2	OASIS RPT	Initial Attack	172.4250	1035	171.6250	1035	D	Talk Group 1
	3	BCY LCL		166.7750	No Tone	166.7750	No Tone	A	
	4	BICY TAC 1	Division A /D	168.6000	No Tone	168.6000	No Tone	A	
	5	BICY LCL 2	DIVISION G	168.2500	No Tone	168.2500	No Tone	A	
	6	A/G 59	Initial Attack	169.1125	No Tone	169.1125	No Tone	A	
	7	Panther RPT	Initial Attack Parliament	164.6250	1188	163.1500	1188	D	Talk Group 1
	8	PANTHER TAC 1	DIVISION Z	166.7500	No Tone	166.7500	No Tone	A	
	9	PANTHER TAC 2	Initial Attack	166.8250	No Tone	166.8250	No Tone	A	
	10	A/G 85	ALL DIVISIONS	168.3250	No Tone	168.3250	No Tone	A	
	11	Everglades TAC 1	Parliament Misc.	166.7250	0659	166.7250	0659	D	
	12	CMD 12	DIVISION A/Z	166.6125	No Tone	168.4000	110.9	A	
	13	CMD 13	DIVISION D/G/Z	168.7000	No Tone	170.9750	110.9	A	
	14	A/G	Aerial Ignition	167.9500	No Tone	167.9500	No Tone	A	
	15	CMD 15	DIV G	173.0375	No Tone	167.3250	110.9	A	
	16	AIR GUARD		168.6250	No Tone	168.6250	110.9	A	
Name: MARK SPANN			Signature: /s/ Mark Spann						
			Date/Time: 04/17/2017 1600						

## MEDICAL PLAN (ICS 206)

<b>1. Incident Name:</b> Cowbell Fire		<b>2. Operational Period:</b> Date From: 04-18-17 Date To: 04-18-17 Time From: 0800 Time To: 2000					
<b>3. Medical Aid Stations:</b>							
Name	Location	Contact Number(s)/Frequency	Paramedics on Site?				
Shanna Ellis MEDL	Medical ICP	318-229-6515	<input type="checkbox"/> Yes	<input checked="" type="checkbox"/> No			
Matt Moran MEDL (T)	Medical ICP	907-887-1539	<input type="checkbox"/> Yes	<input checked="" type="checkbox"/> No			
Frank Abel	Division Z	423-595-1578	<input checked="" type="checkbox"/> Yes	<input type="checkbox"/> No			
Jim Stout	Division G	480-296-1566	<input checked="" type="checkbox"/> Yes	<input type="checkbox"/> No			
Adam White	Division G	910-391-9053	<input type="checkbox"/> Yes	<input checked="" type="checkbox"/> No			
Bob Bruington	Division A/D	801-782-3585	<input type="checkbox"/> Yes	<input checked="" type="checkbox"/> No			
Gene-Paul Matson	Division IA	434-665-0444	<input type="checkbox"/> Yes	<input checked="" type="checkbox"/> No			
<b>4. Transportation (indicate air or ground):</b>							
Ambulance Service	Location	Contact Number(s)/Frequency	Level of Service				
Collier County EMS (ground)	Everglades City (Medic 61)	911	<input checked="" type="checkbox"/> ALS	<input type="checkbox"/> BLS			
Collier County Med-Flight (air)	Naples Airport	911	<input checked="" type="checkbox"/> ALS	<input type="checkbox"/> BLS			
6HX Bell 205 (air) medical evacuation	Oasis Heli-base	168.3250 (A/G 85)	<input type="checkbox"/> ALS	<input checked="" type="checkbox"/> BLS			
<b>5. Hospitals:</b>							
Hospital Name	Address	Contact Number(s)	Travel Time		Trauma Center	Burn Center	Helipad
			Air	Ground			
Physicians Regional Collier Blvd	8300 Collier Blvd. Naples, FL 34114 Lat:26°6.313'/Long: -81°41.106'	239-354-6000 (Main) 239-354-6190 (ER)	15	50	<input type="checkbox"/> Yes Level: _____	<input type="checkbox"/> Yes <input checked="" type="checkbox"/> No	<input checked="" type="checkbox"/> Yes <input type="checkbox"/> No
Physicians Regional Pine Ridge	6101 Pine Ridge Road, Naples 34119 Lat:26°12.833'/Long: -81°43.954'	239-348-4000 (Main) 239-304-4748 (ER)	15	50	<input type="checkbox"/> Yes Level: _____	<input type="checkbox"/> Yes <input checked="" type="checkbox"/> No	<input checked="" type="checkbox"/> Yes <input type="checkbox"/> No
Naples Community Hospital	350 7 <sup>th</sup> Street North, Naples 34102 Lat:26°9.046'/Long: -81°47.907'	239-513-7709 (Main) 239-436-5151 (ER)	15	60	<input checked="" type="checkbox"/> Yes Level: <u>2</u>	<input type="checkbox"/> Yes <input checked="" type="checkbox"/> No	<input checked="" type="checkbox"/> Yes <input type="checkbox"/> No
Jackson Memorial Hospital	1611 NW 12 Avenue, Miami Lat:25°47.508'/Long: -80°12.756'	305-585-1111 (Main) 305-585-6910 (ER)	20	60	<input checked="" type="checkbox"/> Yes Level: <u>1</u>	<input checked="" type="checkbox"/> Yes <input type="checkbox"/> No	<input checked="" type="checkbox"/> Yes <input type="checkbox"/> No
Kendal Regional Medical Center	11750 SW 40 <sup>th</sup> St., Miami 33175 Lat:25°43.916'/Long: -80°23.148'	305-223-3000 (Main) 305-227-5544 (ER)	20	50	<input checked="" type="checkbox"/> Yes Level: <u>1</u>	<input type="checkbox"/> Yes <input checked="" type="checkbox"/> No	<input checked="" type="checkbox"/> Yes <input type="checkbox"/> No
<b>6. Special Medical Emergency Procedures:</b>							
<ul style="list-style-type: none"> <li>• Patient or nearest responder notifies Group Supervisor who will respond to the scene and become the "incident within an incident" (IWI) commander.</li> <li>• <b>Group Supervisor will notify nearest medical responder and ICP-Communications</b> of the incident and "Nine Line" report attached to the back of this IAP or page 108 of the IRPG.</li> </ul> <p>Call "784" (Emergency &amp; Law Enforcement) Everglades Communications on the <b>Oasis or Carns Repeater, or by phone at 1-800-788-0511</b> if it is determined that a <b>pre-hospital medevac care, air hoist capability or snake bite treatment</b> is required. MedFlight located at Naples Municipal Airport will be used for pre-hospital medevac care. Miami-Dade Fire Rescue (MDFR) Air Rescue Bureau will be used for air hoist rescue and also for snake bite treatment. Everglades Communications will advise the 911 dispatcher for Collier or Dade County for their helicopter to communicate through the Incident's Air/Ground frequency.</p> <p>Note: If possible, give coordinates in aviation format – Degrees Decimal Minutes</p> <p><input type="checkbox"/> Check box if aviation assets are utilized for rescue. If assets are used, coordinate with Air Operations.</p>							
<b>7. Prepared by (Medical Unit Leader):</b> Name Shanna Ellis				Signature: <u>/s/ Shanna Ellis</u>			
<b>8. Approved by (Safety Officer):</b> Name: Brian Beisel				Signature: <u>/s/ Brian Beisel</u>			
ICS 206		IAP Page _____		Date/Time: <u>04/14/2017</u>			

# Recycling Guidelines

What is Allowed	What is not Allowed
Plastic #1 through #7, aluminum, and steel cans	Window glass, ceramics, light bulbs
Clear, Brown, and Green Glass	Automotive fluids, paint, cleaning products
Cardboard	Batteries
Paper, magazines, phone books	No food contaminated paper
<ul style="list-style-type: none"> <li>• Break down all cardboard boxes</li> <li>• Empty all liquids and food products</li> </ul>	

## Cowbell Fire Incident Laundry Services

Laundry services for all personnel assigned to the Cowbell Fire is now available. Laundry can be dropped off at the laundry trailer directly adjacent to supply on Monday and Thursday mornings. Clean laundry will be available for pick up at the laundry trailer by 1500 Tuesday and Friday. All clean laundry will be INSIDE the laundry trailer. You can pick up your laundry anytime. Please follow these simple instructions:

1. Place your dirty laundry in a bag and take it to the laundry trailer.
2. Fill out two tags with your name and O or E number.
3. Fill out sign-up sheet.
4. Give your laundry to the Facilities Unit personnel who will be present to assist you.
5. When you pick up your clean laundry please sign next to your name on the sign-up sheet where it indicates that you received it. The clipboard with the sign-up sheet will be inside the trailer.
6. Please close the trailer door after you have picked up your clean laundry or ask Facilities Unit personnel to assist you.

We are pleased to offer this service. If you have any questions please ask Facilities Unit personnel.



Trainees please come by and visit the Training Specialist. We are happy to address any questions or concerns you may have pertaining to your training assignment, as well as document your assignment in the incident trainee database. When you come by, please bring your trainer/evaluator, position task book, and qualification "red" card with you.

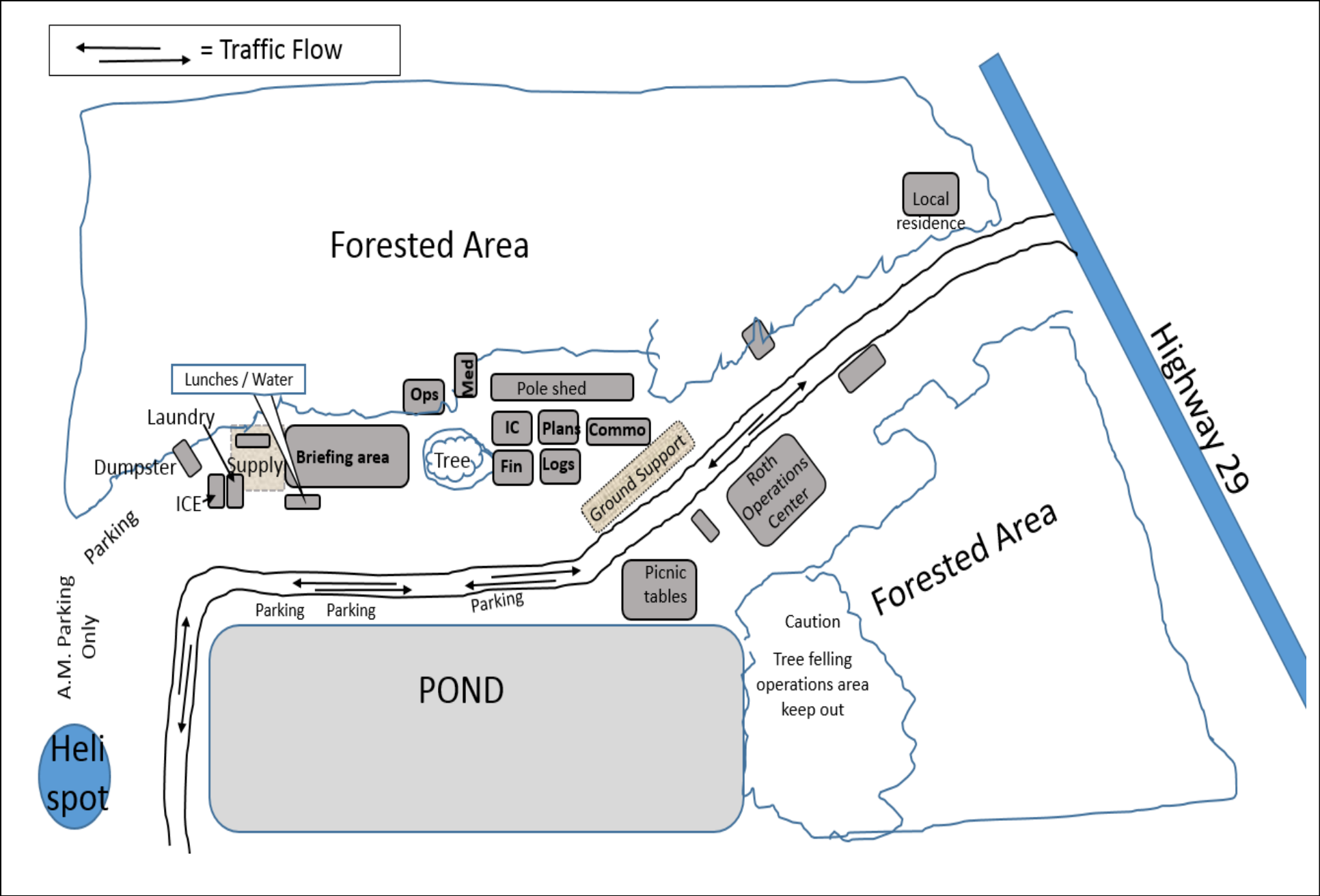
Our goal is to ensure that you have a quality training experience!

Debra Burgos – 404-987-3256  
Mary Leathers – 979-218-3030





# Base Camp Map



81°24'W 81°20'W 81°16'W 81°12'W 81°8'W 81°4'W 81°0'W 80°56'W 80°52'W 80°48'W

26°28'N 26°24'N 26°20'N 26°16'N 26°12'N 26°8'N 26°4'N 26°0'N 25°56'N 25°52'N 25°48'N 25°44'N

21,156 acres  
04/17/2017  
0900 hrs

# Immokalee

## Cowbell Fire

### Vicinity Map

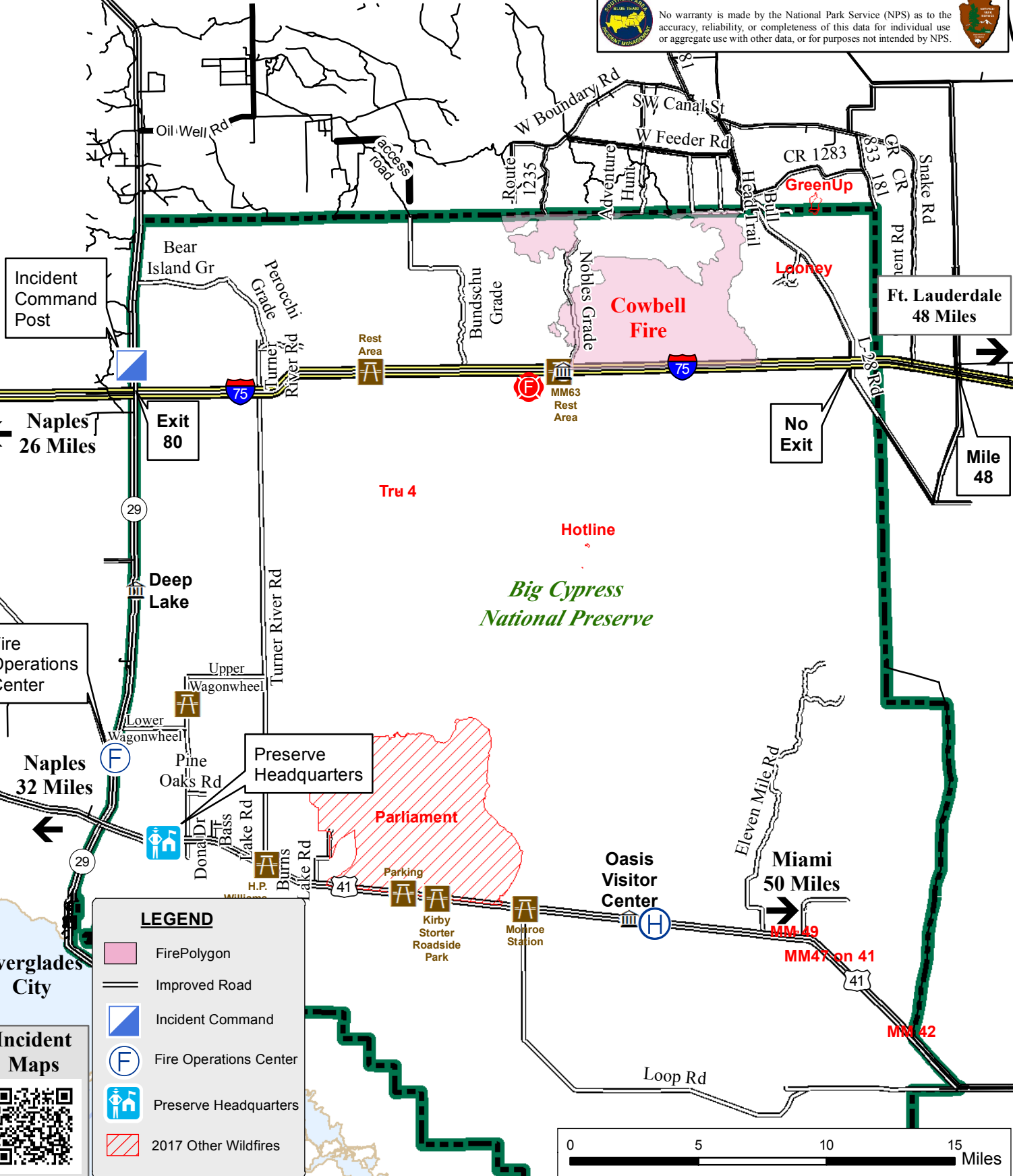
U.S. Department of the Interior  
Big Cypress National Preserve  
33100 Tamiami Trail East  
Ochopee, FL 34141



North American Datum 1983  
Map Created 4/17/2017



No warranty is made by the National Park Service (NPS) as to the accuracy, reliability, or completeness of this data for individual use or aggregate use with other data, or for purposes not intended by NPS.



Incident Command Post

Naples 26 Miles

Fire Operations Center

Naples 32 Miles

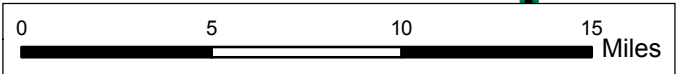
Everglades City

Incident Maps

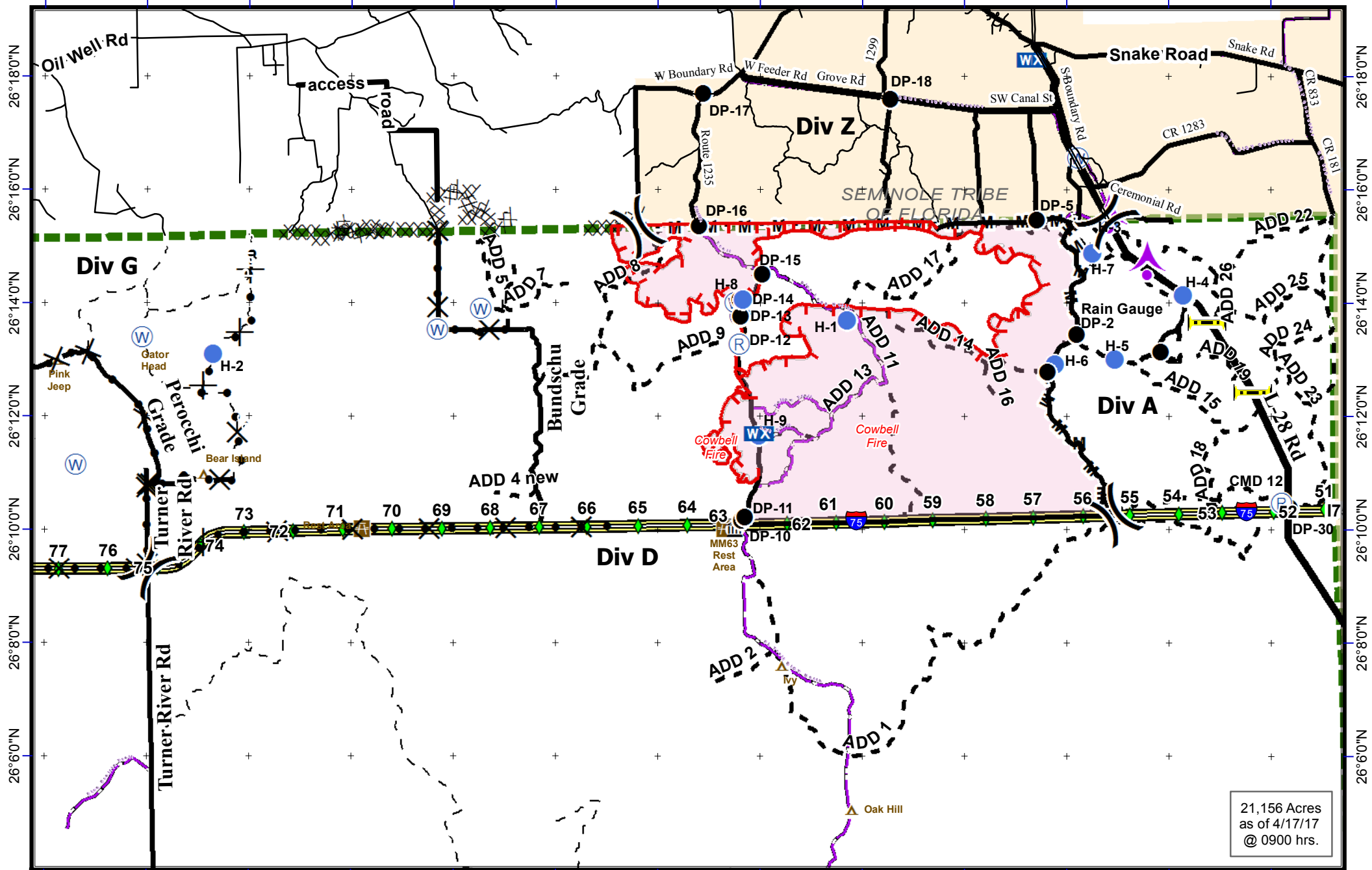


**LEGEND**

- FirePolygon
- Improved Road
- Incident Command
- Fire Operations Center
- Preserve Headquarters
- 2017 Other Wildfires



81°18'0"W 81°16'0"W 81°14'0"W 81°12'0"W 81°10'0"W 81°8'0"W 81°6'0"W 81°4'0"W 81°2'0"W 81°0'0"W 80°58'0"W 80°56'0"W 80°54'0"W



21,156 Acres  
as of 4/17/17  
@ 0900 hrs.

**Cowbell Fire**  
FL-BCP-017033

**IAP Map**  
April 18, 2017  
Day Shift



- Uncontrolled Fire Edge
- Completed Line
- M - M** Mastication Line
- Completed Disk Line
- Proposed Line
- Rain Gauge
- Drop Point
- Helispot
- Division
- WX Mobile Weather
- Repeater
- ▲ Aerial Hazard
- Private Structures
- NPS Property
- I Bridge Locations
- I-75
- Improved Road
- Primary Buggy Trail

NAD 83 UTM 17

0 0.5 1 2 3  
Mile

**PHONE LIST - COWBELL FIRE**

<b>Position</b>	<b>Name</b>	<b>Phone Number</b>	<b>Position</b>	<b>Name</b>	<b>Phone Number</b>
<b>COMMAND</b>			<b>OPERATIONS</b>		
Incident Commander	Mike Wilkins	828-421-5026	Ops Section Chief	Paul Reynolds	662-418-9743
Incident Commander (t)	Andy Baker	706-400-2150	Ops Section Chief Deputy	Dwight Snow	352-516-4969
Deputy Incident Commander	Mark Morales	479-264-7991	Planning Ops	Michael Heard	334-488-5966
			Planning Ops (t)	Paul Vernedoe	423-650-2184
Liaison Officer	Andy Gaston	706-508-2363	Division A/D	Kerry Clark	205-272-2424
Public Information	Terry Krasko	479-280-0452	Division G	Vic Doig	352-493-3155
Public Information	Michael R Williams	470-599-3926	Division Z	Tim Nutley	479-227-0893
Safety Officer	Brian Beisel	270-978-1610	Division Initial Attack	Chris Wilson	918-314-7264
			Division Structure Protection	Shawn Nagle	662-231-4024
			<b>AIR OPERATIONS</b>		
<b>PLANNING</b>			Air Ops Branch Director	John Bragg	423-483-2798
Chief	Terry Pierce	423-596-2694	Air Ops Branch Director (t)	Mike Mowry	870-214-0034
Chief	Dave Dobbs	928-699-5706	Air Tactical Gropu Supervisor	Steve Little	
Resource Unit Leader	Sue Wilder	985-264-2288	Air Support Group Supervisor	Matt Clinton	
Resource Unit Leader	Steven Wells	803-603-0502	Oasis Helibase Manager	Mark Oetzmann	208-315-5030
Situation Unit Leader	Michael J Williams	828-835-0094			
Fire Behavior Analyst	Glenn Fortenberry	501-762-3751	<b>LOGISTICS</b>		
Air Resource Advisor	Andrea Holland	970-274-0010	Chief	Cindy Schiffer	540-230-1269
READ	JoAnne Young	970-422-2246	Chief	Bill Lisowsky	270-816-7417
IMET	Steven Ippoliti	954-826-9405	Chief (t)	Terry Holsclaw	435-201-4443
GISS	Alan Smith	903-261-3294	Chief (t)	Chris Alford	571-334-8549
GISS	Katy McCurdy		Ground Support Unit Leader	Joe Emberson	580-317-5315
Demob	Henry Hickerson	540-798-2218	Ground Support Unit Leader	Randy Chapin	601-405-5716
Check In	Allison Cochran		Equipment Manager		
Training Specialist	Debra Burgos	404-987-3256	Ordering Manager	Sandy Rhodes	501-334-
Technology Support	Dan Leduc	318-613-0362	Ordering Manager	Natalie Broce	540-968-3734
Technology Support	Scotty Griess	770-595-1521	Supply Unit Leader	Bill Kitchings	601-741-2296
			Facilities (t)	Jared Baker	270-804-5182
			Facilities (t)	Jamiel Jones	
<b>FINANCE</b>			Communications	Mark Spann	936-208-0488
Chief	Randee Olson		Comms Trailer		772-631-2573
Time Unit Leader	Sandra Fix	540-460-2509	Medical Unit Leader	Shanna Ellis	318-229-6515
Cost Unit Leader	Susan Deimel	501-337-3598	Security Manger	David Clark	573-714-5142
Comp/Claims	Donna Rogers		Security Mananger (t)	RJ Seehase	414-739-5696
Procurement	Leslie Solberg	360-553-9830	Security	Ryan Maier	352-302-6117
			Security	Chris Kelly	978-580-9245
			Security	Bain Bannon	318-446-1759
			Security	Sam Maldonado	909-522-6905
			Security	Stanley Garner	352-672-1036

<b>1. Incident Name</b>	<b>2. Operational Period (Date/Time)</b> From:                  To:		<b>UNIT LOG</b> <b>ICS 214-CG</b>
<b>3. Unit Name/Designators</b>	<b>4. Unit Leader (Name and ICS Position)</b>		
<b>5. Personnel Assigned</b>			
NAME	ICS POSITION	HOME BASE	
<b>6. Activity Log (Continue on Reverse)</b>			
TIME	MAJOR EVENTS		
<b>7. Prepared by:</b>		<b>Date/Time</b>	



### Medical Incident Report- "9 Line"

**FOR ALL MEDICAL EMERGENCIES: IDENTIFY ON SCENE INCIDENT COMMANDER BY NAME AND POSITION AND ANNOUNCE "MEDICAL EMERGENCY" TO INITIATE RESPONSE FROM IMT COMMUNICATIONS/DISPATCH.**

Use items one through nine to communicate situation to communications/dispatch.

1. CONTACT COMMUNICATIONS/DISPATCH - Comms Trailer Phone (772-631-2573)

Radio Call Sign "784" for Life Threatening Emergencies on the Oasis or Carns repeater or by phone at 1-800-788-0511

*Ex: "Communications, Div. Alpha. Stand-by for Priority Medical Incident Report." (If life threatening request designated frequency be cleared for emergency traffic.)*

2. INCIDENT STATUS: *Provide incident summary and command structure.*

Nature of Injury/Illness		<i>Describe the injury (Ex: Broken leg with bleeding)</i>
Incident Name		<i>Geographic Name + "Medical" (Ex: Trout Meadow Medical)</i>
Incident Commander		<i>Name of IC</i>
Patient Care		<i>Name of Care Provider (Ex: EMT Smith)</i>

3. INITIAL PATIENT ASSESSMENT: *Complete this section for each patient. This is only a brief, initial assessment. Provide additional patient info after completing this 9 Line Report.*

Number of Patients:	Male / Female	Age:	Weight:
Conscious? <input type="checkbox"/> YES <input type="checkbox"/> NO = MEDEVAC!			
Breathing? <input type="checkbox"/> YES <input type="checkbox"/> NO = MEDEVAC!			
Mechanism of Injury: <i>What caused the injury?</i>			
Lat/Long (Datum NAD83)			

4. SEVERITY OF EMERGENCY, TRANSPORT PRIORITY

SEVERITY	TRANSPORT PRIORITY
<input type="checkbox"/> URGENT-RED Life threatening injury or illness. <i>Ex: Unconscious, difficulty breathing, bleeding severely, 2° – 3° burns more than 4 palm sizes, heat stroke, disoriented.</i>	Ambulance or MEDEVAC helicopter. Evacuation need is IMMEDIATE.
<input type="checkbox"/> PRIORITY-YELLOW Serious Injury or illness. <i>Ex: Significant trauma, not able to walk, 2° – 3° burns not more than 1-2 palm sizes.</i>	Ambulance or consider air transport if at remote location. Evacuation may be DELAYED.
<input type="checkbox"/> ROUTINE-GREEN Not a life threatening injury or illness. <i>Ex: Sprains, strains, minor heat-related illness.</i>	Non-Emergency. Evacuation considered Routine of Convenience.

5. TRANSPORT PLAN:

Air Transport: (Agency Aircraft Preferred)

<input type="checkbox"/> Helispot	<input type="checkbox"/> Short-haul/Hoist	<input type="checkbox"/> Life Flight	<input type="checkbox"/> Other
Ground Transport:			
<input type="checkbox"/> Self-Extract	<input type="checkbox"/> Carry-Out	<input type="checkbox"/> Ambulance	<input type="checkbox"/> Other

6. ADDITIONAL RESOURCE/EQUIPMENT NEEDS:

<input type="checkbox"/> Paramedic/EMT(s)	<input type="checkbox"/> Crew(s)	<input type="checkbox"/> SKED/Backboard/C-Collar
<input type="checkbox"/> Burn Sheet(s)	<input type="checkbox"/> Oxygen	<input type="checkbox"/> Trauma Bag
<input type="checkbox"/> Medication(s)	<input type="checkbox"/> IV/Fluid(s)	<input type="checkbox"/> Cardiac Monitor/AED
<input type="checkbox"/> Other (i.e. splints, rope rescue, wheeled litter)		

7. COMMUNICATIONS:

Function	Channel Name/Number	Receive (Rx)	Tone/NAC *	Transmit (Tx)	Tone/NAC *
COMMAND	CARNS Rpt Channel 1	172.4250	1035	170.1000	1035
COMMAND	OASIS Rpt Channel 2	172.4250	1035	171.6250	1035
COMMAND	CMD Channel 12	166.6125	No Tone	168.4000	110.9
AIR-TO-GRND	AG/85 Channel 10	168.3250	No Tone	168.3250	No Tone
TACTICAL					

\*(NAC for digital radio system)

8. EVACUATION LOCATION:

Lat/Long (Datum NAD83) <i>EX: N 40 42.45' x W 123 03.24'</i>	
Patient's ETA to Evacuation Location:	
Helispot/Extraction Size and Hazards:	

9. CONTINGENCY:

**Considerations:** *If primary options fail, what actions can be implemented in conjunction with primary evacuation method? Be thinking ahead...*

**REMEMBER:** **Confirm ETA's of resources ordered  
Act according to your level of training  
Be Alert. Keep Calm. Think Clearly. Act Decisively.**