

# Incident Action Plan



Day Operational Period

Thursday

4/6/17

0800-2000

Cowbell Fire

FL-BCP-017033

PPKX14 (1502)

|  |   |  |                                 |
|--|---|--|---------------------------------|
| INCIDENT OBJECTIVES  | 1. Incident Name<br><b>Cowbell Fire</b> | 2. Date Prepared<br><b>4/5/17</b>                                    | 3. Time Prepared<br><b>1700</b> |
| 4. Operational Period<br><b>4/6/17 0800 - 2000</b>   |   |  |                                 |
| 5. General Control Objectives For The Incident<br><u>Objectives for the Incident:</u> <ul style="list-style-type: none"> <li>• Protection of human life is top priority through the use of sound risk management decisions.</li> <li>• Protect private property and infrastructure, federal facilities, critical transportation corridors, recreational and cultural resource values, T&amp;E species and their habitat (e.g. Florida Panther, Florida bonneted bat, Red-Cockaded Woodpecker), and wilderness values through coordination with READS and following MIST Tactics on current and all initial and extended attack fires.</li> <li>• Provide opportunities to communicate and educate the public on the role of fire in the BCP and FPR ecosystems through social media and other outlets.</li> <li>• Provide training opportunities for Preserve, State, and local federal fire agency personnel to actively enhance successional planning of future firefighting personnel.</li> <li>• Provide initial attack for Big Cypress National Preserve and Florida Panther Refuge.</li> </ul> |   |  |                                 |
| <u>Control Objectives:</u> <ul style="list-style-type: none"> <li>• Keep fire west of the ADD17 between the junctions of ADD 20/ADD 17 and ADD 17/ADD 14, and south of the Big Cypress National Preserve's northern boundry to minimize impacts to high values including Seminole and Miccosukee tribal lands, Sanctuary community, and private land within and near to the boundaries of the Big Cypress National Preserve and Florida Panther Wildlife Refuge.</li> <li>• Minimize smoke impacts on I-75, State Road 29 and 41 in order to avoid safety threats to the public.</li> <li>• Utilize confine, contain, and point source protection strategies and tactics that commit responders only to operations where and when they can be successful and under conditions where important values actually at risk are protected with the least exposure necessary while sustaining relationships with the people we serve.</li> </ul>  |   |  |                                 |
| 6. Weather forecast for Period<br><br>Cloudy, breezy conditions are expected with a chance of showers and a thunderstorm this morning. A strong late season cold front will pass this afternoon eventually bringing Northwest winds and then cooler dryer conditions tonight into Friday.  |   |  |                                 |
| 7. General Safety Message<br><br>Look up, look down, look all around for hazards, recognize them and mitigate them.  |   |  |                                 |
| 8. ATTACHMENTS (X IF ATTACHED)<br><input checked="" type="checkbox"/> Organization List - ICS 203 <input checked="" type="checkbox"/> Medical Plan - ICS 206    [ ] _____<br><input checked="" type="checkbox"/> Division Assignment Lists - ICS 204 <input checked="" type="checkbox"/> Incident Map                      [ ] _____<br><input checked="" type="checkbox"/> Communications Plan - ICS 205                      [ ] Traffic Plan                      [ ] _____   |   |  |                                 |
| 9. Prepared By (Planning Section Chief)<br><br><b>/s/ Dave Berens / Steve Moore</b>  |   | 10. Approved By (Incident Commander)<br><br><b>/s/ Marty Bentley</b> |                                 |

| ORGANIZATION ASSIGNMENT LIST                                       |  | 9.                            | Operations Section   |
|--|--|-------------------------------|--|
| 1. Incident Name<br><b>COWBELL FIRE</b>                            |  | Planning Operations           | Steve Weaver, Paul Varnedoe (t)                                  |
|  |  | Field Operations              | Greg Brooks, Mike Davis (t)                                      |
|  |  |                               |  |
| 2. Date<br>04/05/17  | 3. Time<br>1700                                  |                               |  |
| 4. Operational Period<br>04/06/17 DAY (0800 – 2000)                |  | <b>a.</b>                     | <b>Divisions/Groups</b>  |
| <b>5. Incident Commander and Staff</b>                             |  | Division                      | A<br>Chad Cook, Heath Thomas (t)                                 |
|  |  | Division                      | G<br>E.J. Bunzendahl   |
|  |  | Division                      | Z<br>Tom Crews   |
|  |  | Division                      | Initial Attack<br>Kelly Cagle                                    |
|  |  | Division                      | Parliament & Misc<br>Fires<br>UNSTAFFED                          |
| Liaison Officer  | Mike Wright                                      | Group                         | Structure Protection<br>Ryan Vice                                |
| Safety Officer   | Buddy Kelley, Mark Sullivan, Ken Gordon (t)      | Group                         | Firing<br>Mary Owen/Chris Richards (t)                           |
| Information Officer  | Susie Heisey, Michelle Burnett, Donald Simon (t) |                               |  |
| <b>6. Agency Reps</b>  |  |                               |  |
| Agency Administrator   | Tammy Whittington (Big Cypress)                  |                               |  |
| Agency Administrator   | J.D. Lee (Big Cypress)                           |                               |  |
| Chief of Fire & Aviation   | Byron Hart (Big Cypress)                         |                               |  |
| Zone FMO   | Cass Palmer (Panther)                            |                               |  |
| Collier Co. Sheriff  | Lt. Jake Walker                                  |                               |  |
| Dade Co. Sheriff   | Mike Preston                                     | <b>b.</b>                     | <b>Air Operations Branch</b>                                     |
| Seminole Tribe of Florida  | Grant Steelman                                   |                               |  |
|  |  | Air Operation Branch Director | Mike Rock  |
| <b>7. Planning Section</b>   |  | Air Support Group Supervisor  | Pete Kubiak  |
| Chief  | Dave Berens, Steve Moore                         | Air Tactical Group Supervisor | Ken McLaughlin   |
| Resources Unit   | Melone Sellers, Jessica Hollingsworth (t)        | Helibase Manager              | Mike Roof  |
| Situation Unit   | Jeff DeMatteis, Carol O'Bryan (t)                |                               |  |
| FBAN   | Gary Jarvis, Brenda Dale (t)                     | <b>8. Logistics Section</b>   |  |
| IMET   | John Pendergrast                                 | Chief                         | Jerry Jussila, Tom Phillips (t)                                  |
| Geo. Info. Spec.   | Chris Evans, Melanie Hans, Jeff Adams (t)        | Deputy                        | Susan Cornett  |
| Demob Unit   | Thomas Barrett                                   | Supply Unit                   | Tom Piper  |
| Status Check-In  | Jeff Turner                                      | Facilities Unit               | Glen Bee   |
| Training   | John Davis                                       | Ground Support                | Michael Howarth/Peter Lashoto                                    |
| ITSS   | Jerry Dronberger, Rusty Brown                    | Equipment Manager             |  |
| Documentation  | Bob Sobczak (t)                                  | Ordering Manager              | Sherri Kite  |
| <b>10. Finance Section</b>   |  | Receiving & Distrib. Mgr.     | Chris Combs  |
| Chief  | Wanda Kelley, Holly Cyprian (t)                  | Base Camp Manager             | Mike Justus  |
| Time Unit  | Laura Wilson, Sherise Foster (t)                 | Communications Unit           | George Rosenthal, Ron Regan                                      |
| Equipment Time Unit  | Donna Line (t)                                   | Incident Communication Mgr.   |  |
| Cost Unit  | Carolyn Hughes                                   | Rado                          | Mark Pomponio, Federico Avakian,<br>Brian Gieryk, Scott Brownlow |
| Comp/Claims  | Terri McDonald                                   | Medical Unit Leader           | Gene-Paul Matson, James Fortner (t)                              |
| Procurement  | Leslie Solberg                                   | Security Manager              | Sasha Herrin, RJ Seehase (t)                                     |
| Personnel Time Recorder  | Gustavo Vallejo (t)                              | Security                      | Brian Phillips   |
|  |  |                               |  |
|  |  |                               |  |
|  |  |                               |  |
| Prepared by (RESL) /s/ Melonie Sellers / Jessica Hollingsworth (t) |  |                               |  |



# Fire Weather Forecast

FORECAST NO: 4  
 PREDICTION FOR: Thursday Day Shift  
 SHIFT DATE: April 6, 2017  
 FORECAST ISSUED: 1900 April 5, 2017

NAME OF FIRE: Cowbell Fire  
 UNIT: Big Cypress National Preserve  
 Incident Meteorologist: *John Pendergrast*  
 240-499-6649

**DISCUSSION:** Cloudy, breezy conditions are expected with a chance of showers and a thunderstorm this morning. A strong late season cold front will pass this afternoon eventually bringing Northwest winds and then cooler dryer conditions tonight into Friday.

**TODAY (THURSDAY DAY SHIFT): ...Northwest wind surge developing this afternoon...**

WEATHER: Cloudy, breezy with scattered morning showers and thunderstorms. Clearing and cooler late.  
 WIND (20 FT): Southwest 10 to 15 mph in the morning becoming Northwest 15 to 20 mph in the afternoon.  
 MAX TEMPERATURES: 78 to 82 then falling late.  
 MIN RH: 58%.  
 LAL: 3                      Chance measurable rain: 60% (rain amounts a quarter inch or less.)  
 DISPERSION: 50 MAX    MIXING HEIGHT 5000    TRANSPORT WINDS: SW 20 to 30 mph becoming NW.

**TONIGHT (THURSDAY NIGHT):**

WEATHER: Mostly clear and cool. Breezy in the evening  
 WIND (20 FT): Northwest 10 to 15 mph. Decreasing to 10 mph late.  
 MIN TEMPERATURES: 52 to 57F.  
 MAX RH: 75 to 80%. LVORI 4 (max)  
 LAL: 1    Chance measurable rain: 0%.

**FRIDAY: *Critical Fire Weather Conditions Friday***

WEATHER: Sunny, breezy and dry.  
 WIND (20 FT): Northwest 10 mph increasing to 15 to 20 mph.  
 MAX TEMPERATURES: 74 to 77F.  
 MIN RH: 32%.  
 LAL: 1                      Chance measurable rain: 0%.  
 DISPERSION: 42 MAX    MIXING HEIGHT 4300    TRANSPORT WINDS Northwest 18 to 25 mph.

**GENERAL OUTLOOK SATURDAY THROUGH MONDAY: ...Critical Fire Weather Conditions Saturday...**

Northwest winds will keep cooler and dryer conditions into Saturday. Saturday afternoon winds Northwest 10 to 15 mph.  
 Sunday and Monday: Northeast to East winds 10 mph.  
 WEATHER: Sunny Saturday and Partly cloudy Sunday and Monday. Lows in the 50s. Highs in the 70s Saturday, Lows in the 60s Highs in the 80s Sunday and Monday.  
 WIND (20 FT): NW 10 to 15 mph Saturday. NE 10 mph Sunday and east 10 to 15 mph Monday..  
 MIN RH: 30 to 35 percent Saturday. 45 Percent Sunday,. 45 to 50 percent Monday.



Current Incident  
 area RAWs  
 conditions

Sunrise Thu: 7:12 am  
 Sunset Thu: 7:44 pm

Source: US Naval Observatory

# FIRE BEHAVIOR FORECAST

|  |  |
|--|--|
| <b>FORECAST NUMBER:</b> 04                 | <b>TYPE OF FIRE:</b> Wildland Fire                 |
| <b>FIRE NAME:</b> Cowbell                  | <b>OPERATIONAL PERIOD:</b> Wednesday April 6, 2017 |
| <b>DATE ISSUED:</b> April 5, 2017          | <b>TIME ISSUED:</b> 2000                           |
| <b>UNIT:</b> Big Cypress National Preserve | <b>SIGNED:</b> GaryWJarvis<br>Gary Jarvis FBAN     |

## INPUTS

### WEATHER SUMMARY:

WEATHER: Cloudy, breezy with scattered morning showers and thunderstorms. Clearing and cooler late.

WIND (20 FT): Southwest 10 to 15 mph in the morning becoming Northwest 15 to 20 mph in the afternoon.

MAX TEMPERATURES: 78 to 82 then falling late.

MIN RH: 58%.

LAL: 3

Chance measurable rain: 60% (rain amounts a quarter inch or less.)

DISPERSION: 50 MAX

MIXING HEIGHT 5000 TRANSPORT WINDS: SW 20 to 30 mph becoming NW.

## OUTPUTS

### FIRE BEHAVIOR

#### GENERAL:

Primary fuels consist of grass, southern rough and timber litter. Current fuel conditions are favorable for very active fire behavior within the grass and shrub fuels. The current drought conditions have led to both live and dead fuel moistures to reach areas of concern. Expect all fuels to burn readily, including those that appear green.

**Calculated 1 hour fuel moisture:** 9%

**Forecasted 10 hour fuel moisture:** 13% **Forecasted 100 hour fuel moisture:** 13-15%

**Estimated Live Fuel Moistures:** Herbaceous: 84% Woody: 100%

**Probability of Ignition:** 38% with no shading

#### Expected Fire Behavior:

**Grass** – ROS 23-45 ch/hr with flame lengths 6-8 ft. **Timber Understory/Shrub** – ROS 14-24 ch/hr with flame lengths 8-10 ft

**Spotting** – up to ¼ mile

**Local Thresholds:** Eye Level winds over 10 mph, RH below 50% and a Dispersion Index above 60

*If thunderstorms develop, fuels affected by gusty outflow winds may produce erratic fire behavior. Rates of spread and flames lengths listed above can easily double!!*

### SPECIFIC:

**Cowbell Fire** – Expect the south and east edge of the fire to become active after cold front passes. If the fire gets established to the east the residence along Panther Road could be threatened.

**Initial Attack:** Moderate to heavy resistance can be expected on any new starts in the grass/brush fuels. Expect rapid rates of spread, especially in the grass models and anticipate some spotting to challenge your control efforts.

**AIR OPERATIONS:** Be cautious of isolated afternoon and evening thunderstorms. Communicate with ground resources if approaching thunderstorms moves across fire area.

## SAFETY

There are four common denominators of fire behavior on fatal or near fatal fires

1 – On relative small fires or deceptively quiet areas of large fires

2 – In relatively light fuels, such as grass, herbs and light brush

3 – When there is an unexpected shift in the wind direction or wind speed. (Outflows/Seas Breezes)

4 – When fire responds to topographic conditions and runs up hill. (Fuel types change with elevation here)

## Division/Group Assignment List (ICS 204 WF)

|  |                                |   |            |                               |                |                                   |                  |  |
|--|--------------------------------|---|------------|-------------------------------|----------------|-----------------------------------|------------------|--|
| <b>1. Incident Name:</b>   |                                |   | <b>3.</b>  |                               |                |                                   |                  |  |
| Cowbell Fire   |                                |   | Branch:    |                               | Division/Group |                                   |                  |  |
| <b>2. Operational Period:</b>  |                                |   |            |                               | <b>A</b>       |                                   |                  |  |
| Date/Time From:<br>04/06/17 0800   | Date/Time To:<br>04/06/17 2000 |   |            |                               |                |                                   |                  |  |
| <b>4. Operations Personnel</b>   |                                |   |            |                               |                |                                   |                  |  |
| AIR ATTACK SUPERVISOR  |                                |   |            | FIELD OPERATIONS              |                | Greg Brooks/Mike Davis (t)        |                  |  |
| DIVISION/GROUP SUPERVISOR  |                                | Chad Cook<br>Heath Thomas (t)               |            | PLANNING OPERATIONS           |                | Steve Weaver<br>Paul Varnedoe (t) |                  |  |
| <b>5. Resources Assigned this Period</b>   |                                |   |            |                               |                |                                   |                  |  |
| Strike Team / Task Force / Resource Designator   |                                | LWD   | Leader     |                               | Number Persons | Drop Off PT./Time                 | Pick Up PT./Time |  |
| MOD Ashley   |                                | O-1   | 4/09       | Ben Sanders                   |                | 8                                 |                  |  |
| MOD Great Smoky  |                                | O-70  | 4/11       | Josh Nicholas                 |                | 8                                 |                  |  |
| Transport Buggy  |                                | E-38  | 4/06       | Captain Steve-Victor Robinson |                | 1                                 |                  |  |
| Transport Buggy  |                                | E-39  | 4/06       | Captain Steve-Bobby Weeks     |                | 1                                 |                  |  |
| Transport Buggy  |                                | E-40  | 4/06       | Captain Steve-Timmy Stiltner  |                | 1                                 |                  |  |
| Masticator   |                                | E-6   | 4/17       | Mike Joel                     |                | 1                                 |                  |  |
| HEQB   |                                | O-25  | 4/16       | Eric Moore                    |                | 1                                 |                  |  |
| EMTF   |                                | O-16  | 4/16       | Tracy Milakovic               |                | 1                                 |                  |  |
| EMTP   |                                | O-36  | 4/18       | Frank Able                    |                | 1                                 |                  |  |
| SOFR   |                                | O-38  | 4/16       | Joe Fowler                    |                | 1                                 |                  |  |
|  |                                |   |            |                               |                |                                   |                  |  |
|  |                                |   |            |                               |                |                                   |                  |  |
|  |                                |   |            |                               |                |                                   |                  |  |
| <b>6. Control Operations/Work Assignments:</b>   |                                |   |            |                               |                |                                   |                  |  |
| <b>Task:</b>   |                                |   |            |                               |                |                                   |                  |  |
| <ul style="list-style-type: none"> <li>Anchor suppression work at fire perimeter on ADD 17/14 intersection</li> <li>Patrol and conduct mop up, as appropriate</li> <li>Coordinate with firing group to conduct strategic firing operations northerly along ADD 17 to minimize fire impacts</li> <li>Coordinate with Div Z on triage of hunt camps for point protection</li> <li>Continue vegetative mastication on ADD 17</li> </ul> |                                |   |            |                               |                |                                   |                  |  |
| <b>Purpose:</b>  |                                |   |            |                               |                |                                   |                  |  |
| <ul style="list-style-type: none"> <li>To keep fire confined and contained north and west of ADD 17</li> <li>To protect hunt camp structures</li> </ul>  |                                |   |            |                               |                |                                   |                  |  |
| <b>End State:</b>  |                                |   |            |                               |                |                                   |                  |  |
| <ul style="list-style-type: none"> <li>Control fire perimeter north and west of ADD 17 to eliminate threat to Sanctuary area structures</li> </ul>   |                                |   |            |                               |                |                                   |                  |  |
| <b>7. Special Instructions:</b> Follow tracked vehicle requirement restrictions. Establish and maintain LCES during operational period.  |                                |   |            |                               |                |                                   |                  |  |
| Utilize MIST tactics as outlined in Fire Operations Guide for BICY.  |                                |   |            |                               |                |                                   |                  |  |
| <b>8. Division/Group Communication Summary</b>   |                                |   |            |                               |                |                                   |                  |  |
| Function   | Channel                        | RX Frequency N/W                            | RXTone/NAC | TX Frequency N/W              | TX Tone/NAC    | Mode                              |                  |  |
| COMMAND  | 7                              | 164.6250                                    | 1188       | 163.1500                      | 1188           | D                                 |                  |  |
| TACTICAL   | 4                              | 168.6000                                    |            | 168.6000                      |                | A                                 |                  |  |
| AIR TO GROUND  | 10                             | 168.3250                                    |            | 168.3250                      |                | A                                 |                  |  |
| <b>9. Prepared By (Resource Unit Leader)</b>   |                                | <b>Approved By (Planning Section Chief)</b> |            |                               | <b>Date</b>    | <b>Time</b>                       |                  |  |
| /s/Melonie Sellers/Jessica Hollingsworth (t)   |                                | Dave Berens/Steve Moore                     |            |                               | 04/05/17       | 16:00                             |                  |  |

### Division/Group Assignment List (ICS 204 WF)

|   |         |                                |   |                     |                   |                                   |                     |
|---|---------|--------------------------------|---|---------------------|-------------------|-----------------------------------|---------------------|
| <b>1. Incident Name:</b>  |         |                                | <b>3.</b>                                   |                     |                   |                                   |                     |
| Cowbell Fire  |         |                                | <b>Branch:</b>                              |                     | <b>G</b>          |                                   |                     |
| <b>2. Operational Period:</b>   |         |                                |   |                     |                   |                                   |                     |
| Date/Time From:<br>04/06/17 0800  |         | Date/Time To:<br>04/06/17 2000 |   |                     |                   |                                   |                     |
| <b>4. Operations Personnel</b>  |         |                                |   |                     |                   |                                   |                     |
| AIR ATTACK SUPERVISOR   |         |                                |   | FIELD OPERATIONS    |                   | Greg Brooks/Mike Davis (t)        |                     |
| DIVISION/GROUP SUPERVISOR   |         | E.J. Bunzendahl                |   | PLANNING OPERATIONS |                   | Steve Weaver<br>Paul Varnedoe (t) |                     |
| <b>5. Resources Assigned this Period</b>  |         |                                |   |                     |                   |                                   |                     |
| Strike Team / Task Force /<br>Resource Designator   |         |                                | LWD   | Leader              | Number<br>Persons | Drop Off<br>PT./Time              | Pick Up<br>PT./Time |
| T6 ENG Firetrax   |         | E-86                           | 4/19  | TBD                 | 2                 |                                   |                     |
| T6 ENG Wildlands Fire Service   |         | E-87                           | 4/19  | TBD                 | 2                 |                                   |                     |
|   |         |                                |   |                     |                   |                                   |                     |
|   |         |                                |   |                     |                   |                                   |                     |
|   |         |                                |   |                     |                   |                                   |                     |
|   |         |                                |   |                     |                   |                                   |                     |
|   |         |                                |   |                     |                   |                                   |                     |
|   |         |                                |   |                     |                   |                                   |                     |
|   |         |                                |   |                     |                   |                                   |                     |
|   |         |                                |   |                     |                   |                                   |                     |
|   |         |                                |   |                     |                   |                                   |                     |
|   |         |                                |   |                     |                   |                                   |                     |
|   |         |                                |   |                     |                   |                                   |                     |
|   |         |                                |   |                     |                   |                                   |                     |
| <b>6. Control Operations/Work Assignments:</b>  |         |                                |   |                     |                   |                                   |                     |
| <b>Task:</b>  |         |                                |   |                     |                   |                                   |                     |
| <ul style="list-style-type: none"> <li>Identity priority areas for mastication on ADD 14</li> <li>Scout and identify contingency lines</li> </ul>   |         |                                |   |                     |                   |                                   |                     |
| <b>Purpose:</b>   |         |                                |   |                     |                   |                                   |                     |
| <ul style="list-style-type: none"> <li>To keep fire contained south and west of ADD 17 and ADD 14</li> </ul>  |         |                                |   |                     |                   |                                   |                     |
| <b>End State:</b>   |         |                                |   |                     |                   |                                   |                     |
| <ul style="list-style-type: none"> <li>Confine fire perimeter to reduce threats to resource values at risk</li> </ul>   |         |                                |   |                     |                   |                                   |                     |
| <b>7. Special Instructions:</b> Follow tracked vehicle requirement restrictions. Establish and maintain LCES during operational period. Utilize MIST tactics as outlined in Fire Operations Guide for BICY. |         |                                |   |                     |                   |                                   |                     |
| <b>8. Division/Group Communication Summary</b>  |         |                                |   |                     |                   |                                   |                     |
| Function  | Channel | RX Frequency N/W               | RXTone/NAC                                  | TX Frequency N/W    | TX Tone/NAC       | Mode                              |                     |
| COMMAND   | 7       | 164.6250                       | 1188  | 163.1500            | 1188              | D                                 |                     |
| TACTICAL  | 5       | 168.2500                       |   | 168.2500            |                   | A                                 |                     |
| AIR TO GROUND   | 10      | 168.3250                       |   | 168.3250            |                   | A                                 |                     |
| <b>9. Prepared By (Resource Unit Leader)</b>  |         |                                | <b>Approved By (Planning Section Chief)</b> |                     |                   | <b>Date</b>                       | <b>Time</b>         |
| /s/Melonie Sellers/Jessica Hollingsworth(t)   |         |                                | Dave Berens/Steve Moore                     |                     |                   | 04/05/17                          | 16:00               |

## Division/Group Assignment List (ICS 204 WF)

|   |                                |                     |   |                   |                                   |             |
|---|--------------------------------|---------------------|---|-------------------|-----------------------------------|-------------|
| <b>1. Incident Name:</b>  |                                |                     | <b>3.</b>                                   |                   |                                   |             |
| Cowbell Fire  |                                |                     | <b>Branch:</b>                              |                   | <b>Division/Group</b>             |             |
| <b>2. Operational Period:</b>   |                                |                     |   |                   | <b>Z</b>                          |             |
| Date/Time From:<br>04/06/17 0800  | Date/Time To:<br>04/06/17 2000 |                     |   |                   |                                   |             |
| <b>4. Operations Personnel</b>  |                                |                     |   |                   |                                   |             |
| AIR ATTACK SUPERVISOR   |                                |                     | FIELD OPERATIONS                            |                   | Greg Brooks/Mike Davis (t)        |             |
| DIVISION/GROUP SUPERVISOR   | Tom Crews                      |                     | PLANNING OPERATIONS                         |                   | Steve Weaver<br>Paul Varnedoe (t) |             |
| <b>5. Resources Assigned this Period</b>  |                                |                     |   |                   |                                   |             |
| Strike Team / Task Force / Resource Designator  | LWD                            | Leader              | Number Persons                              | Drop Off PT./Time | Pick Up PT./Time                  |             |
| HC2IA Colorado BLM  | C-3                            | 4/09 Ian Barrett    | 20  |                   |                                   |             |
| MOD Buffalo   | O-21                           | 4/16 Josh Hampton   | 6   |                   |                                   |             |
| SOFR  | O-63                           | 4/19 David Dallison | 1   |                   |                                   |             |
| EMTF  | O-17                           | 4/15 Jim Stout      | 1   |                   |                                   |             |
|   |                                |                     |   |                   |                                   |             |
|   |                                |                     |   |                   |                                   |             |
|   |                                |                     |   |                   |                                   |             |
|   |                                |                     |   |                   |                                   |             |
| <b>6. Control Operations/Work Assignments:</b>  |                                |                     |   |                   |                                   |             |
| <b>Task:</b>  |                                |                     |   |                   |                                   |             |
| <ul style="list-style-type: none"> <li>Continue suppression work at fire perimeter from Div A break</li> <li>Complete triage of hunt camp structures in Div Z and Div A for point protection</li> <li>Utilize perimeter trail for firing operations north and east</li> <li>Disk fence line boundary for firebreak</li> </ul> |                                |                     |   |                   |                                   |             |
| <b>Purpose:</b>   |                                |                     |   |                   |                                   |             |
| <ul style="list-style-type: none"> <li>To keep fire confined and contained south and east of ADD 17</li> <li>To protect hunt camp structures</li> </ul>   |                                |                     |   |                   |                                   |             |
| <b>End State:</b>   |                                |                     |   |                   |                                   |             |
| <ul style="list-style-type: none"> <li>Control fire perimeter south and east of ADD 17 to eliminate threat to Seminole Nation Lands and Ceremonial Area</li> </ul>  |                                |                     |   |                   |                                   |             |
| <b>7. Special Instructions:</b> Follow tracked vehicle requirement restrictions. Establish and maintain LCES during operational period.   |                                |                     |   |                   |                                   |             |
| Utilize MIST tactics as outlined in Fire Operations Guide for BICY.   |                                |                     |   |                   |                                   |             |
| <b>8. Division/Group Communication Summary</b>  |                                |                     |   |                   |                                   |             |
| Function  | Channel                        | RX Frequency N/W    | RXTone/NAC                                  | TX Frequency N/W  | TX Tone/NAC                       | Mode        |
| COMMAND   | 7                              | 164.6250            | 1188  | 163.1500          | 1188                              | D           |
| TACTICAL  | 8                              | 166.7500            |   | 166.7500          |                                   | A           |
| AIR TO GROUND   | 10                             | 168.3250            |   | 168.3250          |                                   | A           |
| <b>9. Prepared By (Resource Unit Leader)</b>  |                                |                     | <b>Approved By (Planning Section Chief)</b> |                   | <b>Date</b>                       | <b>Time</b> |
| /s/Melonie Sellers/Jessica Hollingsworth(t)   |                                |                     | Dave Berens/Steve Moore                     |                   | 04/05/17                          | 16:00       |



## Division/Group Assignment List (ICS 204 WF)

|   |                                |   |                           |                     |                       |                                   |                  |
|---|--------------------------------|---|---------------------------|---------------------|-----------------------|-----------------------------------|------------------|
| <b>1. Incident Name:</b>  |                                |   | <b>3.</b>                 |                     |                       |                                   |                  |
| Cowbell Fire  |                                |   | <b>Branch:</b>            |                     | <b>Division/Group</b> |                                   |                  |
| <b>2. Operational Period:</b>   |                                |   |                           |                     | <b>IA</b>             |                                   |                  |
| Date/Time From:<br>04/06/17 0800  | Date/Time To:<br>04/06/17 2000 |   |                           |                     |                       |                                   |                  |
| <b>4. Operations Personnel</b>  |                                |   |                           |                     |                       |                                   |                  |
| AIR ATTACK SUPERVISOR   |                                |   |                           | FIELD OPERATIONS    |                       | Greg Brooks/Mike Davis (t)        |                  |
| DIVISION/GROUP SUPERVISOR   |                                | Kelly Cagle                                 |                           | PLANNING OPERATIONS |                       | Steve Weaver<br>Paul Varnedoe (t) |                  |
| <b>5. Resources Assigned this Period</b>  |                                |   |                           |                     |                       |                                   |                  |
| Strike Team / Task Force / Resource Designator  |                                | LWD   | Leader                    |                     | Number Persons        | Drop Off PT./Time                 | Pick Up PT./Time |
| TFLD  | O-60                           | 4/19  | Harold Kibbe              |                     | 1                     |                                   |                  |
| TFLD  | O-61                           | 4/19  | Mario Marquee             |                     | 1                     |                                   |                  |
| MOD EE  | O-67                           | 4/18  | Matt Britt                |                     | 7                     |                                   |                  |
| ENG6 Big Thickett   | E-57                           | 4/19  | Gus Schaefer              |                     | 2                     |                                   |                  |
| ENG6 K31  | E-7                            | 4/15  | Steven Staples            |                     | 3                     |                                   |                  |
| ENG6 #602   | O-2.2/2.3                      | local                                       | Nate Ochs/Jake Hauser (t) |                     | 2                     |                                   |                  |
| Duece Buggy IA  |                                | 4/09  | Lucas Hunkler             |                     | 2                     |                                   |                  |
| EMTF  | O-18                           | 4/15  | Bob Bruington             |                     | 1                     |                                   |                  |
|   |                                |   |                           |                     |                       |                                   |                  |
|   |                                |   |                           |                     |                       |                                   |                  |
|   |                                |   |                           |                     |                       |                                   |                  |
| <b>6. Control Operations/Work Assignments:</b>  |                                |   |                           |                     |                       |                                   |                  |
| <b>Task:</b>  |                                |   |                           |                     |                       |                                   |                  |
| <ul style="list-style-type: none"> <li>Coordinate with BICY duty officer for notification of newly reported ignitons</li> <li>Coordinate initial attack action with assigned aviation and /or ground assets</li> <li>Determine IA resource prepositioning needs across BICY and FPWR</li> </ul> |                                |   |                           |                     |                       |                                   |                  |
| <b>Purpose:</b>   |                                |   |                           |                     |                       |                                   |                  |
| <ul style="list-style-type: none"> <li>Ensure communications with FL Hwy Patrol regarding smoke on I-75</li> <li>Ensure timely response on any IA within BICY and FPWR</li> </ul>   |                                |   |                           |                     |                       |                                   |                  |
| <b>End State:</b>   |                                |   |                           |                     |                       |                                   |                  |
| <ul style="list-style-type: none"> <li>Protect human life</li> <li>Minimize environment damage to protect habitat of threatened and endangered species</li> <li>Minimize damage to public and private property</li> </ul>   |                                |   |                           |                     |                       |                                   |                  |
| <b>7. Special Instructions:</b> Follow tracked vehicle requirement restrictions. Establish and maintain LCES during operational period. Utilize MIST tactics as outlined in Fire Operations Guide for BICY.   |                                |   |                           |                     |                       |                                   |                  |
| <b>8. Division/Group Communication Summary</b>  |                                |   |                           |                     |                       |                                   |                  |
| Function  | Channel                        | RX Frequency N/W                            | RX Tone/NAC               | TX Frequency N/W    | TX Tone/NAC           | Mode                              |                  |
| COMMAND   | 7                              | 164.6250                                    | 1188                      | 163.1500            | 1188                  | D                                 |                  |
| TACTICAL  | 9                              | 166.8250                                    |                           | 166.8250            |                       | A                                 |                  |
| AIR TO GROUND   | 6                              | 169.1125                                    |                           | 169.1125            |                       | A                                 |                  |
| <b>9. Prepared By (Resource Unit Leader)</b>  |                                | <b>Approved By (Planning Section Chief)</b> |                           |                     | <b>Date</b>           | <b>Time</b>                       |                  |
| /s/Melonie Sellers/Jessica Hollingsworth(t)   |                                | Dave Berens/Steve Moore                     |                           |                     | 04/05/17              | 16:00                             |                  |

## Division/Group Assignment List (ICS 204 WF)

|  |                                |   |  |                      |                     |      |
|--|--------------------------------|---|--|----------------------|---------------------|------|
| <b>1. Incident Name:</b>   |                                | <b>3.</b>                                   |  |                      |                     |      |
| Cowbell Fire   |                                | <b>Branch:</b>                              | <b>Division/Group</b><br><b>Parliament/<br/>Misc Fire<br/>Patrol</b> |                      |                     |      |
| <b>2. Operational Period:</b>  |                                |   |  |                      |                     |      |
| Date/Time From:<br>04/06/17 0800   | Date/Time To:<br>04/06/17 2000 |   |  |                      |                     |      |
| <b>4. Operations Personnel</b>   |                                |   |  |                      |                     |      |
| AIR ATTACK SUPERVISOR  |                                | FIELD OPERATIONS                            | Greg Brooks/Mike Davis (t)   |                      |                     |      |
| DIVISION/GROUP SUPERVISOR  |                                | PLANNING OPERATIONS                         | Steve Weaver<br>Paul Varnedoe (t)                                    |                      |                     |      |
| <b>5. Resources Assigned this Period</b>   |                                |   |  |                      |                     |      |
| Strike Team / Task Force /<br>Resource Designator  | LWD                            | Leader                                      | Number<br>Persons  | Drop Off<br>PT./Time | Pick Up<br>PT./Time |      |
| unstaffed  |                                |   |  |                      |                     |      |
|  |                                |   |  |                      |                     |      |
|  |                                |   |  |                      |                     |      |
|  |                                |   |  |                      |                     |      |
|  |                                |   |  |                      |                     |      |
|  |                                |   |  |                      |                     |      |
|  |                                |   |  |                      |                     |      |
| <b>6. Control Operations/Work Assignments:</b>   |                                |   |  |                      |                     |      |
| <b>Task:</b>   |                                |   |  |                      |                     |      |
| <ul style="list-style-type: none"> <li>Patrol and monitor fires on BICY and FPWR with aviation and ground assets as directed by lead OSC</li> <li>Commensurate with values at risk</li> <li>Monitor fires for further suppression management action</li> </ul> |                                |   |  |                      |                     |      |
| <b>Purpose:</b>  |                                |   |  |                      |                     |      |
| <ul style="list-style-type: none"> <li>Assure suppression action taken limits environmental impact, consistent with MIST tactics</li> </ul>  |                                |   |  |                      |                     |      |
| <b>End State:</b>  |                                |   |  |                      |                     |      |
| <ul style="list-style-type: none"> <li>Protect human life</li> <li>Minimize damage to public and private property</li> <li>Minimize environmental damage to protect habitat of threatened and endangered species</li> </ul>                                    |                                |   |  |                      |                     |      |
| <b>7. Special Instructions:</b> Follow tracked vehicle requirement restrictions. Establish and maintain LCES during operational period.<br>Utilize MIST tactics as outlined in Fire Operations Guide for BICY.   |                                |   |  |                      |                     |      |
| <b>8. Division/Group Communication Summary</b>   |                                |   |  |                      |                     |      |
| Function   | Channel                        | RX Frequency N/W                            | RXTone/NAC   | TX Frequency N/W     | TX Tone/NAC         | Mode |
| COMMAND  | 7                              | 164.6250                                    | 1188   | 163.1500             | 1188                | D    |
| TACTICAL   | 11                             | 166.7250                                    | 0659   | 166.7250             | 0659                | D    |
| AIR TO GROUND  | 10                             | 168.3250                                    |  | 168.3250             |                     | A    |
| <b>9. Prepared By (Resource Unit Leader)</b>   |                                | <b>Approved By (Planning Section Chief)</b> |  | <b>Date</b>          | <b>Time</b>         |      |
| /s/Melonie Sellers/Jessica Hollingsworth(t)  |                                | Dave Berens/Steve Moore                     |  | 04/05/17             | 16:00               |      |

## Division/Group Assignment List (ICS 204 WF)

|  |         |  |                 |                     |  |                                   |                     |
|--|---------|--|-----------------|---------------------|--|-----------------------------------|---------------------|
| <b>1. Incident Name:</b>   |         |  | <b>3.</b>       |                     |  |                                   |                     |
| Cowbell Fire   |         |  | <b>Branch:</b>  |                     | <b>Division/Group<br/>Structure<br/>Protection<br/>Group</b> |                                   |                     |
| <b>2. Operational Period:</b>  |         |  |                 |                     |  |                                   |                     |
| Date/Time From:<br>04/06/17 0800   |         | Date/Time To:<br>04/06/17 2000   |                 |                     |  |                                   |                     |
| <b>4. Operations Personnel</b>   |         |  |                 |                     |  |                                   |                     |
| AIR ATTACK SUPERVISOR  |         |  |                 | FIELD OPERATIONS    |  | Greg Brooks/Mike Davis (t)        |                     |
| DIVISION/GROUP SUPERVISOR  |         | Ryan Vice  |                 | PLANNING OPERATIONS |  | Steve Weaver<br>Paul Varnedoe (t) |                     |
| <b>5. Resources Assigned this Period</b>   |         |  |                 |                     |  |                                   |                     |
| Strike Team / Task Force /<br>Resource Designator  |         | LWD  | Leader          |                     | Number<br>Persons  | Drop Off PT./Time                 | Pick Up<br>PT./Time |
| HC1 Midewin C-2  |         | 4/10   | Jerry Huffman   |                     | 19   |                                   |                     |
| TFLD O-106.1   |         | 4/16   | Wes Richardson  |                     | 1  |                                   |                     |
| TFLD O-106.3   |         | 4/16   | Daren Gunn      |                     | 1  |                                   |                     |
| MOD BIFZ #2 O-92   |         | 4/16   | Brett Morefield |                     | 8  |                                   |                     |
| ENG6 WFS E-8   |         | 4/16   | Dave Sechrist   |                     | 3  |                                   |                     |
| ENG6 WFS E-9   |         | 4/16   | Saul Irvin      |                     | 3  |                                   |                     |
| ENG6 Attack One E-10   |         | 4/16   | Wes Coleman     |                     | 2  |                                   |                     |
| ENG6 CSP61 E-59  |         | 4/19   | Jason Johnson   |                     | 2  |                                   |                     |
| STPS O-4.62  |         | 4/16   | Glenn Phillips  |                     | 1  |                                   |                     |
| SOFR O-89  |         | 4/19   | John Foley      |                     | 1  |                                   |                     |
| FOBS O-24  |         | 4/19   | Gabe Gamino     |                     | 1  |                                   |                     |
| FOBS O-22  |         | 4/18   | Ron Rockis      |                     | 1  |                                   |                     |
| FOBS O-23  |         | 4/18   | Luke Hurley     |                     | 1  |                                   |                     |
| FOBS (t) O-84  |         | Local  | Mindy Wright    |                     | 1  |                                   |                     |
| EMTF O-15  |         | 4/16   | Matt Lancaster  |                     | 1  |                                   |                     |
| <b>6. Control Operations/Work Assignments:</b>   |         |  |                 |                     |  |                                   |                     |
| <b>Task:</b>   |         |  |                 |                     |  |                                   |                     |
| <ul style="list-style-type: none"> <li>• Affirm contact procedures with Collier County EMS and Sheriff Dept to assure smooth communication in event of community evacuation needs</li> <li>• Evaluate Sanctuary community and hunt camp area in DIV A and Div Z area to complete structure protection plan</li> <li>• Coordinate with landowners to determine special considerations and road or trail access</li> </ul> |         |  |                 |                     |  |                                   |                     |
| <b>Purpose:</b>  |         |  |                 |                     |  |                                   |                     |
| <ul style="list-style-type: none"> <li>• Ensure timely response to protect human life, property and access</li> </ul>  |         |  |                 |                     |  |                                   |                     |
| <b>End State:</b>  |         |  |                 |                     |  |                                   |                     |
| <ul style="list-style-type: none"> <li>• Maintain communications with appropriate county emergency management and law enforcement agencies to complete timely evacuations</li> </ul>   |         |  |                 |                     |  |                                   |                     |
| <b>7. Special Instructions:</b> Establish and maintain LCES during operational period. Transport structure protection supplies to Sanctuary. Start installing hose lays and sprinkler kits to implement structure protection.  |         |  |                 |                     |  |                                   |                     |
| <b>8. Division/Group Communication Summary</b>   |         |  |                 |                     |  |                                   |                     |
| Function   | Channel | RX Frequency N/W   | RXTone/NAC      | TX Frequency N/W    | TX Tone/NAC  | Mode                              |                     |
| COMMAND  | 7       | 164.6250   | 1188            | 163.1500            | 1188   | D                                 |                     |
| TACTICAL   | 11      | 166.7250   | 0659            | 166.7250            | 0659   | D                                 |                     |
| AIR TO GROUND  | 10      | 168.3250   |                 | 168.3250            |  | A                                 |                     |
| <b>9. Prepared By (Resource Unit Leader)</b><br>/s/Melonie Sellers/Jessica Hollingsworth(t)  |         | <b>Approved By (Planning Section Chief)</b><br>Dave Berens/Steve Moore |                 |                     | <b>Date</b><br>04/05/17                                      | <b>Time</b><br>16:00              |                     |



# AIR OPERATIONS SUMMARY

OPERATIONAL PERIOD DATE: 04-06-2017

0900-2000

|  |                                  |  |  |
|--|----------------------------------|--|--|
| <b>1. INCIDENT NAME:</b> Cowbell   | <b>2. PREPARED BY:</b> Mike Rock | <b>PREPARED DATE/TIME:</b> 04/05/2017 1730 | <b>3. Sunrise:</b> 0710 <b>Sunset:</b> 1946                                  |
| <b>4. REMARKS (Safety Notes, Hazards, Air Operations Special Equipment,, etc.):</b> Medivac Aircraft: <b>5HQ</b><br>MTR- Located along state road 29.Fire Dispatch gets MTR activity every morning<br>Do not over fly structures with external load missions.<br>All aircraft should use strobes and running lights in smoky conditions.<br>Hazards: Snags, non-incident aircraft, and winds.<br>Contract helicopter working special use permit in North Central portion of BICY. Area identified on pilot briefing board. ATGS has air to air communications. |                                  |  | <b>5. Squawk 1255</b><br><br>TFR—7/4656 ZMA FL, Airspace 25 nm NE of Ochopee |

| 6. PERSONNEL   | Phone  | 7. FREQUENCIES             | AM      | FM                                       | 8. FIXEDWING              | Base   |
|--|--|----------------------------|---------|--|---------------------------|--|
| AOBD: Mike Rock<br>ASGS: Pete Kubiak   | 606-813-9750<br>404-661-4819                 | Air/Air Rotor              | 123.575 |  | Air Attack-<br>Air Attack | 197GB – Aero Commander MKY<br>4566M Baron MKY  |
| ATGS: Ken McLaughlin<br>ATGS – James Gresham                                   | 813-997-0317<br>208-660-4139                 | Air/Air Fixed Wing         | 118.825 |  | T-801<br>T-819            | Seat –IMM, Start 0900<br>Seat —IMM, Start 0900 |
| <u>Oasis Helibase (9FL7)</u><br>HEB2 Mike Roof<br>Seat Manager – Jack Benzilio | 239-695-0278<br>702-610-4574<br>970-799-1232 | Air/Ground<br>Cowbell      |         | 168.3250 RX/TX (A)<br>169.1125 RX/TX (A) |                           |  |
|  |  | Air/Ground IA              |         |  |                           |  |
|  |  | Flight Following<br>(BICY) |         | 169.7250 RX N1514<br>163.3875 TX N1738   |                           |  |
|  |  | Air/Guard                  |         | 168.6250 RX/TX<br>Tone 110.9             |                           |  |
|  |  | Deck                       |         | 166.7750                                 |                           |  |

**9. HELICOPTERS (Use Additional Sheets As Necessary)**

| FAA N# or Designator | TY | MAKE/MODEL | BASE            | START | REMARKS         | FAA N# or Designator | TY | MAKE/MODEL | BASE  | START   | REMARKS        |
|----------------------|----|------------|-----------------|-------|-----------------|----------------------|----|------------|-------|---------|----------------|
| 206RW                | 3  | Bell 206   | Oasis           | 0900  | Park Helicopter | 1KA                  | 1  | K-MAX      | Oasis | 0900    | Bucket         |
| 0HH                  | 3  | Bell 206   | Oasis/RON-Miami | 0900  | Recon / Bucket  | 61CK                 | 1  | S-61       | IMM   | 0900    | Tanked         |
| 5HQ                  | 2  | Bell 205++ | Oasis           | 0900  | Crew/ Bucket    | 718                  | 1  | CH-54      | IMM   | 0900    | Tanked         |
| 6HX                  | 2  | Bell 205   | Oasis           | 0900  | Crew/Bucket     | 28HX                 | 2  | 205        | Oasis | enroute | Recon / Bucket |

**10. TASK/MISSION/ASSIGNMENT (Use ICS-220a if additional space needed; Type/Function includes: Air Tactical, Retardant, Recon, Personnel Transport, Water Dropping, etc.)**

| TYPE/FUNCTION  | NAME OF PERSONNEL OR CARGO (if applicable) OR INSTRUCTIONS FOR TACTICAL AIRCRAFT | MISSION START | FLY FROM | FLY TO |
|----------------|--|---------------|----------|--------|
| Mapping        | As Requested   | 0930          |          |        |
| Reconnaissance | As Requested   | 0930          |          |        |
| Water Drops    | As Requested   | 0930          |          |        |

# SAFETY MESSAGE

Incident: **Cowbell**

Date: April 6, 2017

Time: briefing

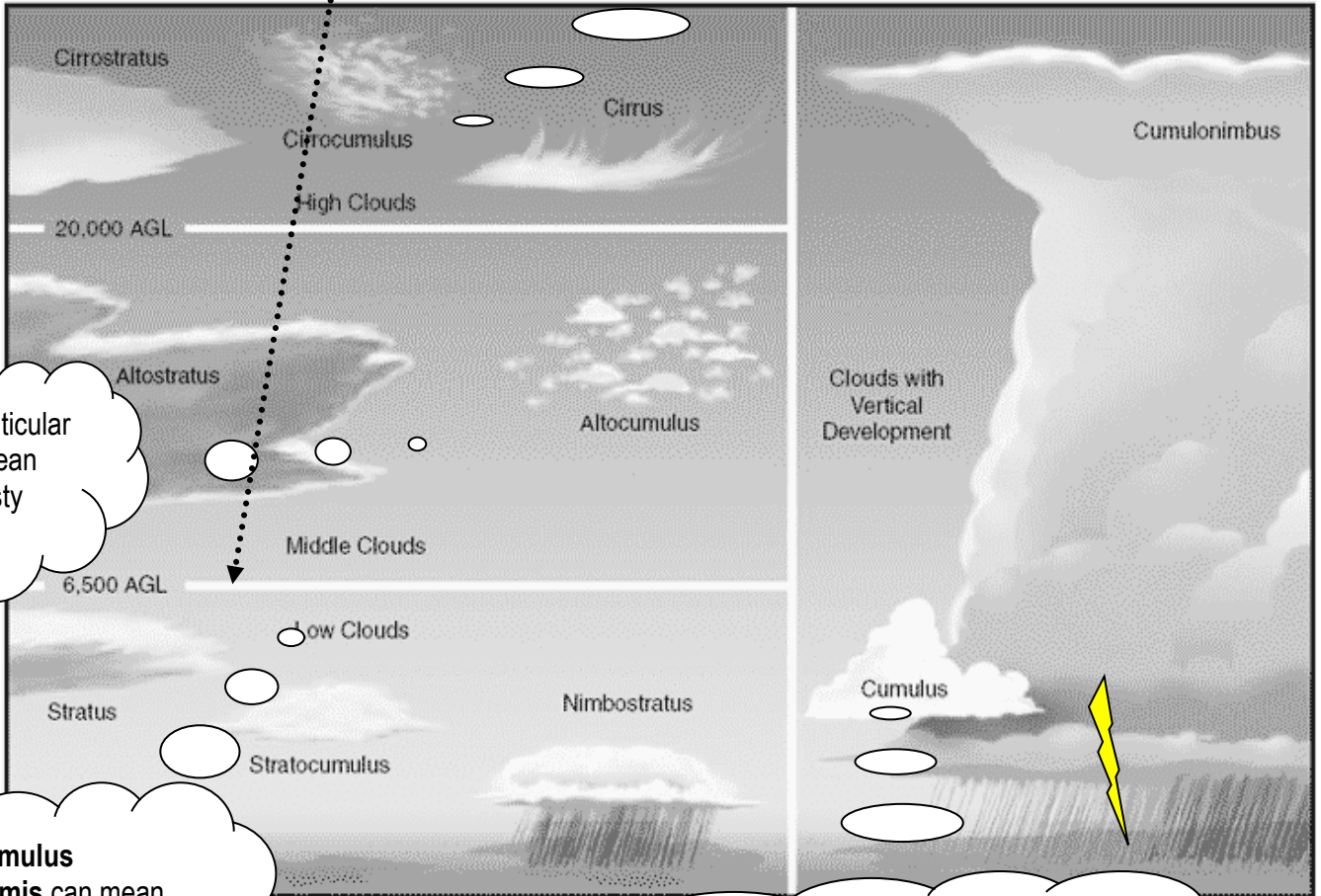
## Standard firefighting order #1

Keep informed on fire weather conditions and forecasts

Mixing heights >5000 ft, transport winds >15mph begins the stage for dangerous wildfire activity! **What is predicted for today?**

### Cirrocumulus

Ice Clouds. Precipitation is likely afternoon thunderstorms.



Alto - Lenticular clouds mean warm gusty winds

**Stratocumulus stratoformis** can mean immediate threat of bad weather if at head of a cold front - gusty winds

**Cumulus** clouds develop into dangerous lightning storms with shifting strong gusty winds

Safety questions - please be prepared to answer:

1. Can you give me one 'Hazard Control' to take during a thunder storm? IRPG page 21
2. Do you have any SA for today?
3. 1 hr, 100hr, and 1000hr fuels are DRY  
What does that mean to you today?

## Safety Guys



## INCIDENT SAFETY ANALYSIS 215a

Cowbell Fire - Thursday, April 06, 2017

| 8. Location   | 9. Hazard                               | 6. Control or Abatement Action (Engineering, Administrative, PPE, Avoidance, Education, etc)   |
|---------------|---|--|
| DIVS ALL & IA | Hazard Trees                            | <ul style="list-style-type: none"> <li>~ Avoid cutting Hazard Trees, unless they are an obvious Safety Hazard to crews in the vicinity ( Reference the "Big Cypress National Preserve - Wilfire Incident Resource Protection Plan")</li> <li>~ Follow "Hazard Tree Safety" guidelines, IRPG page 22.</li> <li>~ Post lookouts, or use a spotter in mop-up areas with personnel.</li> <li>~ Don't park vehicles or take breaks in high concentrations of hazard trees.</li> <li>~ Establish trigger points for disengagement during high wind events.</li> <li>~ Remember that the hazard zone extends a minimum of 2 1/2 tree heights.]</li> </ul>   |
| DIVS ALL & IA | Helicopter Operations                   | <ul style="list-style-type: none"> <li>~ Stay clear of all bucket drops when suppression actions are in place and allow 1 minute prior to re-entry.</li> <li>~ Monitor Air-Ground communications.</li> <li>~ Follow aviation safety guidelines in IRPG and IHOG.</li> </ul>  |
| DIVS ALL & IA | Injury & Medical Emergency              | <ul style="list-style-type: none"> <li>~ For "IWI" use 9 line procedures</li> <li>~ For "air hoist capability" or "snake bite treatment" contact Big Cypress Communications to request "Miami-Dade Air Rescue" for assistance.</li> <li>~ Assist injured employee with appropriate medical care.</li> <li>~ Use EMT's on Division for initial care.</li> <li>~ Follow medical protocol as outlined in ICS-206 &amp; IRPG Pgs 99-108</li> </ul>   |
| DIVS ALL & IA | Injury & Medical Emergency              | <ul style="list-style-type: none"> <li>~ For "IWI" use 9 line procedures</li> <li>~ For "air hoist capability" or "snake bite treatment" contact Big Cypress Communications to request "Miami-Dade Air Rescue" for assistance.</li> <li>~ Assist injured employee with appropriate medical care.</li> <li>~ Use EMT's on Division for initial care.</li> <li>~ Follow medical protocol as outlined in ICS-206 &amp; IRPG Pgs 99-108</li> </ul>   |
| DIVS ALL & IA | Driving & Traffic                       | <ul style="list-style-type: none"> <li>~ Practice "Defensive Driving" techniques traveling on all roads and city streets.</li> <li>~ Use spotters when backing.</li> <li>~ Honk horn to alert personnel when backing.</li> <li>~ Keep clutter off dash and inside cab.</li> <li>~ Follow Driving LCES (Lights, Chock blocks, Emergency brake, Seat belts.</li> <li>~ Always use headlights.</li> <li>~ Yield to pedestrians and bicycles.</li> <li>~ Observe posted speed limits.</li> <li>~ Use the 3 second rule for following distance when driving.</li> <li>~ Use chock blocks, turn wheels into hill.</li> <li>~ Avoid distractions (eating, cell phones, radio).</li> <li>~ Ensure that windshields are kept clean of dust and bugs.</li> </ul> |
| DIVS ALL & IA | Chain Saw Operations                    | <ul style="list-style-type: none"> <li>~ Follow "Hazard Tree Safety" guidelines, IRPG page 22</li> <li>~ Look up, Look down, Look around for hazard tree indicators.</li> <li>~ Only fell and buck trees within your expertise, and training.</li> <li>~ Follow "Procedural Felling Operations" on page 79 in IRPG.</li> <li>~ Do not fall trees during high wind events.</li> <li>~ Ensure proper use of all required PPE.</li> </ul>   |
| DIVS ALL & IA | Firing Operations & Devices             | <ul style="list-style-type: none"> <li>~ Only personnel trained in the use of each device will be authorized to use firing equipment.</li> <li>~ Ensure all personnel are aware of firing operation that may affect them.</li> <li>~ Wear appropriate PPE.</li> <li>~ Ensure aerial/ground ignition plans have been adequately developed and personnel are briefed.</li> </ul>   |
| DIVS ALL & IA | Firing Operations & Devices             | <ul style="list-style-type: none"> <li>~ Only personnel trained in the use of each device will be authorized to use firing equipment.</li> <li>~ Ensure all personnel are aware of firing operation that may affect them.</li> <li>~ Wear appropriate PPE.</li> <li>~ Ensure aerial/ground ignition plans have been adequately developed and personnel are briefed.</li> </ul>   |
| DIVS ALL & IA | Vehicle Operations in Inclement Weather | <ul style="list-style-type: none"> <li>~ Be alert for potential muddy and slick road surfaces.</li> <li>~ Avoid parking on soft shoulders along roads.</li> <li>~ Stay off secondary roads in wet conditions.</li> <li>~ Increase following distance on slick road surfaces.</li> <li>~ Send a scout to evaluate roads and work area prior to personnel engagement.</li> </ul>   |
| DIVS ALL & IA | Fatigue & Over Exertion                 | <ul style="list-style-type: none"> <li>~ Drink 1 quart of water each hour during and after work.</li> <li>~ Rotate crews out of smokey areas.</li> <li>~ Set a reasonable work pace and allow adequate rest breaks while on the project.</li> <li>~ Stagger work crews start time to limit fatigue.</li> <li>~ Use buddy system to monitor personnel of heat related and fatigue issues.</li> <li>~ Follow work / rest guidelines.</li> </ul>  |



## INCIDENT SAFETY ANALYSIS 215a

|                   |                                     |   |
|-------------------|-------------------------------------|---|
| DIVS G & Z<br>& A | Heavy Equipment Operations          | <ul style="list-style-type: none"> <li>~ Ensure communications are established with operators.</li> <li>~ Use hand signals if other communications are unavailable.</li> <li>~ Maintain a 50'-100' exclusion area around equipment and increase it to 1 1/2 times tree height when in timber.</li> <li>~ Use a spotter when backing.</li> <li>~ Avoid working below heavy equipment.</li> </ul>   |
| DIVS ALL & IA     | Communications                      | <ul style="list-style-type: none"> <li>~ Maintain communication with aviation resources, and suppression organization.</li> <li>~ Ensure all know frequency and protocol for contacting resources.</li> <li>~ Utilize the ICS 205.</li> <li>~ Utilize human repeaters when working in dead spots.</li> </ul>  |
| DIVS ALL & IA     | Wildlife                            | <ul style="list-style-type: none"> <li>~ Watch out for wildlife such as alligators, bear, deer, panthers, snakes</li> <li>~ Do not feed, handle or taunt wildlife</li> <li>~ Maintain safe distance and avoid contact ~Discard trash (food and containers) in proper disposal sites</li> <li>~ Secure pump location sites, watch for alligators, snakes and other wildlife</li> </ul>   |
| DIVS ALL & IA     | ATV/UTV use                         | <ul style="list-style-type: none"> <li>~ Ensure equipment is inspected and safe to use.</li> <li>~ Restrict UTV's to max width of 50" on ATV trails due to width and severe out sloped conditions.</li> <li>~ Ensure operator is trained and certified to operate.</li> <li>~ Ensure operator has proper PPE according to the Redbook and/or RMA.</li> <li>~ Question if it is mission critical.</li> </ul>   |
| DIVS ALL & IA     | Unburned Area/Reburn Potential      | <ul style="list-style-type: none"> <li>~ Monitor weather.</li> <li>~ Base actions upon observed and predicted fire behavior.</li> <li>~ LCES Checklist (IRPG pg. 6).</li> <li>~ Look Up, Down and Around (IRPG pg. 2-3).</li> </ul>   |
| DIVS ALL & IA     | Extreme Fire Behavior               | <ul style="list-style-type: none"> <li>~ Share weather observations with all personnel assigned to division.</li> <li>~ Establish "Trigger Points" to withdraw.</li> <li>~ Use "Risk Management" process prior to engaging in suppression actions, refer to page 1, IRPG.</li> </ul>  |
| DIVS ALL & IA     | Firefighter & Public Smoke Exposure | <ul style="list-style-type: none"> <li>~ Identify homes and structures with private parties remaining behind the evacuation.</li> <li>~ Identify personnel responsible for contacting private parties.</li> <li>~ Use warning lights and provide traffic control on roadways during smoky and night operations.</li> <li>~ Rotate crews out of smokey areas during firing and mop-up operations.</li> <li>~ Contact Communications when firing operations are initiated.</li> </ul> |
| DIVS A & Z        | Structure Protection & HAZMAT       | <ul style="list-style-type: none"> <li>~ Review "Wildland Urban Interface" Watch outs, IRPG page 12.</li> <li>~ Use "Structure Assessment" checklist, IRPG pages 12-16.</li> <li>~ Follow "HAZMAT Incident Operations" on pages 34-36 in IRPG.</li> </ul>   |
| DIVS ALL & IA     | Unplanned Public Interaction        | <ul style="list-style-type: none"> <li>~ Be alert to non-fire personnel in areas with suppression personnel.</li> <li>~ All non-fire personnel will be escorted while on fireline.</li> <li>~ Post lookouts in areas with public to avoid conflicts with mission tasks.</li> <li>~ Ensure sufficient security to restrict access to exclusion area.</li> </ul>  |



## MEDICAL PLAN (ICS 206)

|  |  |
|--|--|
| <b>1. Incident Name:</b><br>Cowbell Fire | <b>2. Operational Period:</b> Date From: 04-06-17 Date To: 04-06-17<br>Time From: 0800 Time To: 2000 |
|--|--|

| 3. Medical Aid Stations:    |                            |                             |   |  |
|-----------------------------|----------------------------|-----------------------------|---|--|
| Name                        | Location                   | Contact Number(s)/Frequency | Paramedics on Site?                     |  |
| Gene-Paul Matson EMTF, MEDL | Medical ICP                | 434-665-0444                | <input checked="" type="checkbox"/> Yes | <input type="checkbox"/> No            |
| James Fortner EMTF, MEDL T  | Medical ICP                | 202-236-3139                | <input type="checkbox"/> Yes            | <input checked="" type="checkbox"/> No |
| Tracy Milakovic             | Division A                 | 719-850-0022                | <input type="checkbox"/> Yes            | <input checked="" type="checkbox"/> No |
| Frank Able                  | Division A                 | 423-595-1578                | <input checked="" type="checkbox"/> Yes | <input type="checkbox"/> No            |
| Jim Stout                   | Division Z                 | 480-296-1566                | <input checked="" type="checkbox"/> Yes | <input type="checkbox"/> No            |
| Bob Bruington               | IA                         | 801-782-3585                | <input type="checkbox"/> Yes            | <input checked="" type="checkbox"/> No |
| Matt Lancaster              | Structure Protection Group | 303-870-5248                | <input type="checkbox"/> Yes            | <input checked="" type="checkbox"/> No |

| 4. Transportation (indicate air or ground): |                            |                             |   |   |
|---|----------------------------|-----------------------------|---|---|
| Ambulance Service                           | Location                   | Contact Number(s)/Frequency | Level of Service                        |   |
| Collier County EMS (ground)                 | Everglades City (Medic 61) | 911                         | <input checked="" type="checkbox"/> ALS | <input type="checkbox"/> BLS            |
| Collier County Med-Flight (air)             | Naples Airport             | 911                         | <input checked="" type="checkbox"/> ALS | <input type="checkbox"/> BLS            |
| 5HQ Bell 205 (air) medical evacuation       | Oasis Heli-base            | 168.3250 (A/G 85)           | <input type="checkbox"/> ALS            | <input checked="" type="checkbox"/> BLS |

| 5. Hospitals:                    |  |  |             |        |  |  |  |
|----------------------------------|--|--|-------------|--------|--|--|--|
| Hospital Name                    | Address  | Contact Number(s)                        | Travel Time |        | Trauma Center  | Burn Center  | Helipad  |
|                                  |  |  | Air         | Ground |  |  |  |
| Physicians Regional Collier Blvd | 8300 Collier Blvd. Naples, FL 34114<br>Lat:26°6'18.7884"/Long: -81°41'6.3486"            | 239-354-6000 (Main)<br>239-354-6190 (ER) | 15          | 50     | <input type="checkbox"/> Yes<br>Level: _____               | <input type="checkbox"/> Yes<br><input checked="" type="checkbox"/> No | <input checked="" type="checkbox"/> Yes<br><input type="checkbox"/> No |
| Physicians Regional Pine Ridge   | 6101 Pine Ridge Road, Naples 34119<br>Lat:26°12'49.9752"/Long: -81°43'57.2592"           | 239-348-4000 (Main)<br>239-304-4748 (ER) | 15          | 50     | <input type="checkbox"/> Yes<br>Level: _____               | <input type="checkbox"/> Yes<br><input checked="" type="checkbox"/> No | <input checked="" type="checkbox"/> Yes<br><input type="checkbox"/> No |
| Naples Community Hospital        | 350 7 <sup>th</sup> Street North, Naples 34102<br>Lat:26°9'2.7498"/Long: -81°47'54.4164" | 239-513-7709 (Main)<br>239-436-5151 (ER) | 15          | 60     | <input checked="" type="checkbox"/> Yes<br>Level: <u>2</u> | <input type="checkbox"/> Yes<br><input checked="" type="checkbox"/> No | <input checked="" type="checkbox"/> Yes<br><input type="checkbox"/> No |
| Jackson Memorial Hospital        | 1611 NW 12 Avenue, Miami<br>Lat:26°12'49.9752"/Long: -81°43'57.2592"                     | 305-585-1111 (Main)<br>305-585-6910 (ER) | 20          | 60     | <input checked="" type="checkbox"/> Yes<br>Level: <u>1</u> | <input checked="" type="checkbox"/> Yes<br><input type="checkbox"/> No | <input checked="" type="checkbox"/> Yes<br><input type="checkbox"/> No |
| Kendal Regional Medical Center   | 11750 SW 40 <sup>th</sup> St., Miami 33175<br>Lat:25°43'54.951"/Long: -80°23'8.8722"     | 305-223-3000 (Main)<br>305-227-5544 (ER) | 20          | 50     | <input checked="" type="checkbox"/> Yes<br>Level: <u>1</u> | <input type="checkbox"/> Yes<br><input checked="" type="checkbox"/> No | <input checked="" type="checkbox"/> Yes<br><input type="checkbox"/> No |

| 6. Special Medical Emergency Procedures:   |
|--|
| <ul style="list-style-type: none"> <li>Patient or nearest responder notifies Group Supervisor who will respond to the scene and become the "incident within an incident" (IWI) commander.</li> <li><b>Group Supervisor will notify nearest medical responder and ICP-Communications</b> of the incident and "Nine Line" report attached to this 206 or page 108 of the IRPG.</li> </ul> <p>Call Big Cypress Communications if it is determined that <b>air hoist capability or snake bite treatment</b> is required. Miami-Dade Air Rescue will be used for an air hoist rescue and also for snake bite treatment. Communications will advise the 911 dispatcher for the helicopter to communicate through Big Cypress Dispatch.</p> <p>Note: If possible, give coordinates in aviation format – Degrees, Decimal, Minutes</p> <p><input type="checkbox"/> Check box if aviation assets are utilized for rescue. If assets are used, coordinate with Air Operations.</p> |

|  |  |
|--|--|
| <b>7. Prepared by</b> (Medical Unit Leader): Name: Gene-Paul Matson/James P. Fortner(T) Signature: <i>James P. Fortner</i> | <b>8. Approved by</b> (Safety Officer): Name: Ken Gordon Signature: <i>Kenneth R. Gordon</i> |
|--|--|

|         |                |                              |
|---------|----------------|------------------------------|
| ICS 206 | IAP Page _____ | Date/Time: <u>04/05/2017</u> |
|---------|----------------|------------------------------|

## INCIDENT RADIO COMMUNICATIONS PLAN (ICS 205)

| 3. Operational Period: DAY         |      |                  |   |                                 |             |          |             |                  |              |
|------------------------------------|------|------------------|---|---------------------------------|-------------|----------|-------------|------------------|--------------|
| Date/Time From:<br>04/04/2017 0800 |      |                  | Date/Time To: 04/04/2017 2000           |                                 |             |          |             |                  |              |
| Zone Group                         | Ch # | Function         | Assignment                              | RX Freq                         | RX Tone/NAC | TX Freq  | TX Tone/NAC | Mode (A,D, or M) | Remarks      |
|                                    | 1    | CARNS RPT        |   | 172.4250                        | 1035        | 170.1000 | 1035        | D                | Talk Group 1 |
|                                    | 2    | OASIS RPT        | ALL DIVISIONS                           | 172.4250                        | 1035        | 171.6250 | 1035        | D                | Talk Group 1 |
|                                    | 3    | BCY LCL          |   | 166.7750                        | No Tone     | 166.7750 | No Tone     | A                |              |
|                                    | 4    | BICY TAC 1       | Division A/Firing Group                 | 168.6000                        | No Tone     | 168.6000 | No Tone     | A                |              |
|                                    | 5    | BICY LCL 2       | Division G                              | 168.2500                        | No Tone     | 168.2500 | No Tone     | A                |              |
|                                    | 6    | A/G 59           | Initial Attack                          | 169.1125                        | No Tone     | 169.1125 | No Tone     | A                |              |
|                                    | 7    | Panther RPT      | ALL DIVISIONS                           | 164.6250                        | 1188        | 163.1500 | 1188        | D                | Talk Group 1 |
|                                    | 8    | PANTHER TAC 1    | DIVISION Z                              | 166.7500                        | No Tone     | 166.7500 | No Tone     | A                |              |
|                                    | 9    | PANTHER TAC 2    | Initial Attack                          | 166.8250                        | No Tone     | 166.8250 | No Tone     | A                |              |
|                                    | 10   | A/G 85           | ALL DIVISIONS                           | 168.3250                        | No Tone     | 168.3250 | No Tone     | A                |              |
|                                    | 11   | Everglades TAC 1 | Structure Protection / Parliament Misc. | 166.7250                        | 0659        | 166.7250 | 0659        | D                | Talk Group 1 |
|                                    | 12   | A/G 44           |   | 167.6250                        | No Tone     | 167.6250 | No Tone     | A                |              |
|                                    | 13   | CMD 13           |   | 168.7000                        | No Tone     | 170.9750 | 110.9       | A                |              |
|                                    | 14   | A/G              | ALL DIVISIONS                           | 167.9500                        | No Tone     | 167.9500 | No Tone     | A                |              |
|                                    | 15   | BCYFLTRP         | ALL DIVISIONS                           | 169.7250                        | 1514        | 163.3875 | 1738        | D                |              |
|                                    | 16   | AIR GUARD        |   | 168.6250                        | No Tone     | 168.6250 | 110.9       | A                |              |
| Name: GEORGE ROSENTHAL             |      |                  |   | Signature: /s/ George Rosenthal |             |          |             |                  |              |
|                                    |      |                  |   | Date/Time: 04/05/2017 1035      |             |          |             |                  |              |



**To: All Incident Personnel, Cowbell Fire**

As Southern Area Type II Incident Commander, I am committed to a policy of “zero tolerance” of inappropriate behavior during incident operations. Any form of harassment, discriminatory practices, or disrespectful behavior will not be tolerated. Known or reported acts will be dealt with appropriately.

I am particularly concerned about the perception that alcohol has a place in any of the Incident facilities. It is not appropriate to indulge in alcoholic beverages during any fire assignment.

The Teams from the Southern Region have a team expectation of “NO ALCOHOL” from the time of dispatch until the time of physical release from the Incident. Members of the Team voluntarily comply with this expectation; all incident personnel will be expected to do so also.

We endorse, support, and expect an attitude of mutual respect for all Incident personnel and the public we serve. We also, endorse the attitude and work ethic that places “Safety First, every time on every Incident.” We expect nothing less.

/s/ Steve Parrish  
Incident Commander  
Southern Area Gold Team

## **Finance Notes**

Please turn in CTRs and Equipment Shift Tickets **daily**. A box for these is located on the trailer near the IAPs during morning briefing, or they may be turned in at Finance any time during the day. Please make sure you include your name, **CORRECT** request number (i.e., O-1, E-2, C-3, A-4.1), and date on your documents.

**Note:** Record all travel time using the time zone of departure.

**All Casual Hires (ADs):** Please ensure that the Time Unit has your mailing address, phone number, casual hire form, and ECI number.

**Initial Attack:** For those who are on the new fires, note the actual time you work on the new fires. We must track costs for those separately.

**ALL RESOURCES – please check in at Finance if you have not already done so.**

### **Following people – See Finance**

Brian Gieryk, Need casual hire form

Eric Moore, Need casual hire form

Nicholas Connolly, No CTR's from 3/30 to 4/1

## **TRAINING MESSAGE**

APRIL 6

Trainees, please check in with the Training Specialist as soon as possible. The process takes only a few minutes to complete if you come prepared with the names and addresses for your home unit training officer and incident trainer/evaluator. Bring your Position Task Book and your 'Red' card, as well. I'm currently located in the Big Cypress FOC with Check-in and DMOB.

John Davis

TNSP



## Southern Area Incident Management Gold Team Fire Information

Looking for more information on the Cowbell and Parliament Fires in Big Cypress National Preserve? Follow us on social media:



InciWeb <https://inciweb.nwcg.gov/unit/2296>



Twitter <https://twitter.com/BigCypressNPS>



Facebook <https://www.facebook.com/BigCypressNPS>

You can also call us between 8 a.m. and 8 p.m. at 305-204-6659.

For general information about the Big Cypress National Preserve, visit <https://www.nps.gov/bicy> or call 239-695-1107.

**WE WANT YOUR PICTURES AND VIDEOS!**

Please email us your videos and pictures at [BICYfireinfo@gmail.com](mailto:BICYfireinfo@gmail.com). We love to post them on social media and our information boards.

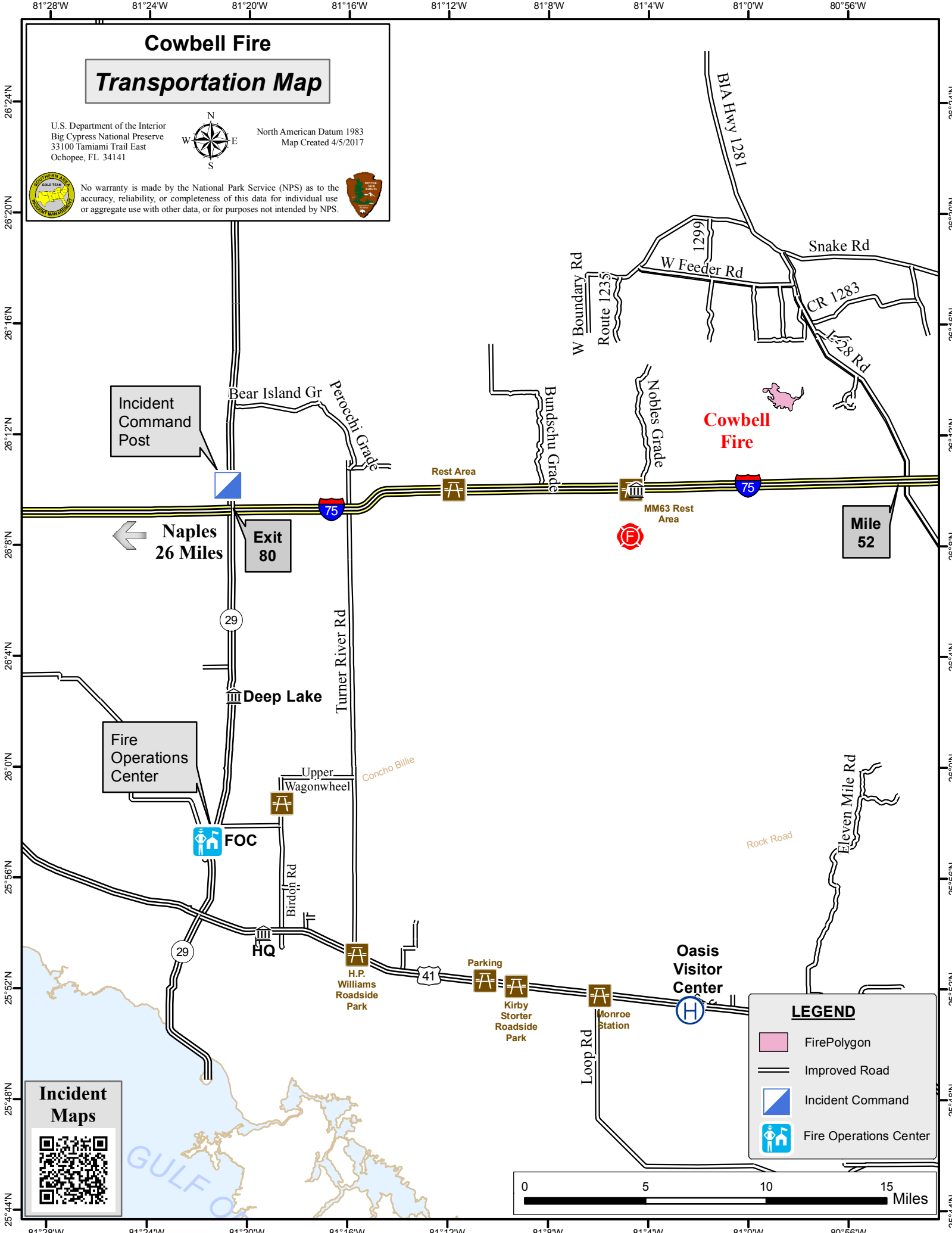
# Cowbell Fire Transportation Map

U.S. Department of the Interior  
Big Cypress National Preserve  
33100 Tamiami Trail East  
Ochopee, FL 34141

North American Datum 1983  
Map Created 4/5/2017



No warranty is made by the National Park Service (NPS) as to the accuracy, reliability, or completeness of this data for individual use or aggregate use with other data, or for purposes not intended by NPS.



Incident  
Command  
Post

← Naples  
26 Miles

Exit  
80

Fire  
Operations  
Center

FOC

HQ

H.P.  
Williams  
Roadside  
Park

Parking

Kirby  
Storier  
Roadside  
Park

Monroe  
Station

Oasis  
Visitor  
Center

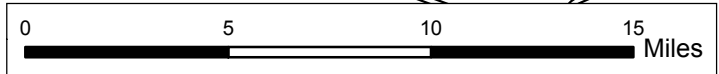
**Cowbell  
Fire**

MM63 Rest  
Area

Mile  
52

### LEGEND

-  FirePolygon
-  Improved Road
-  Incident Command
-  Fire Operations Center



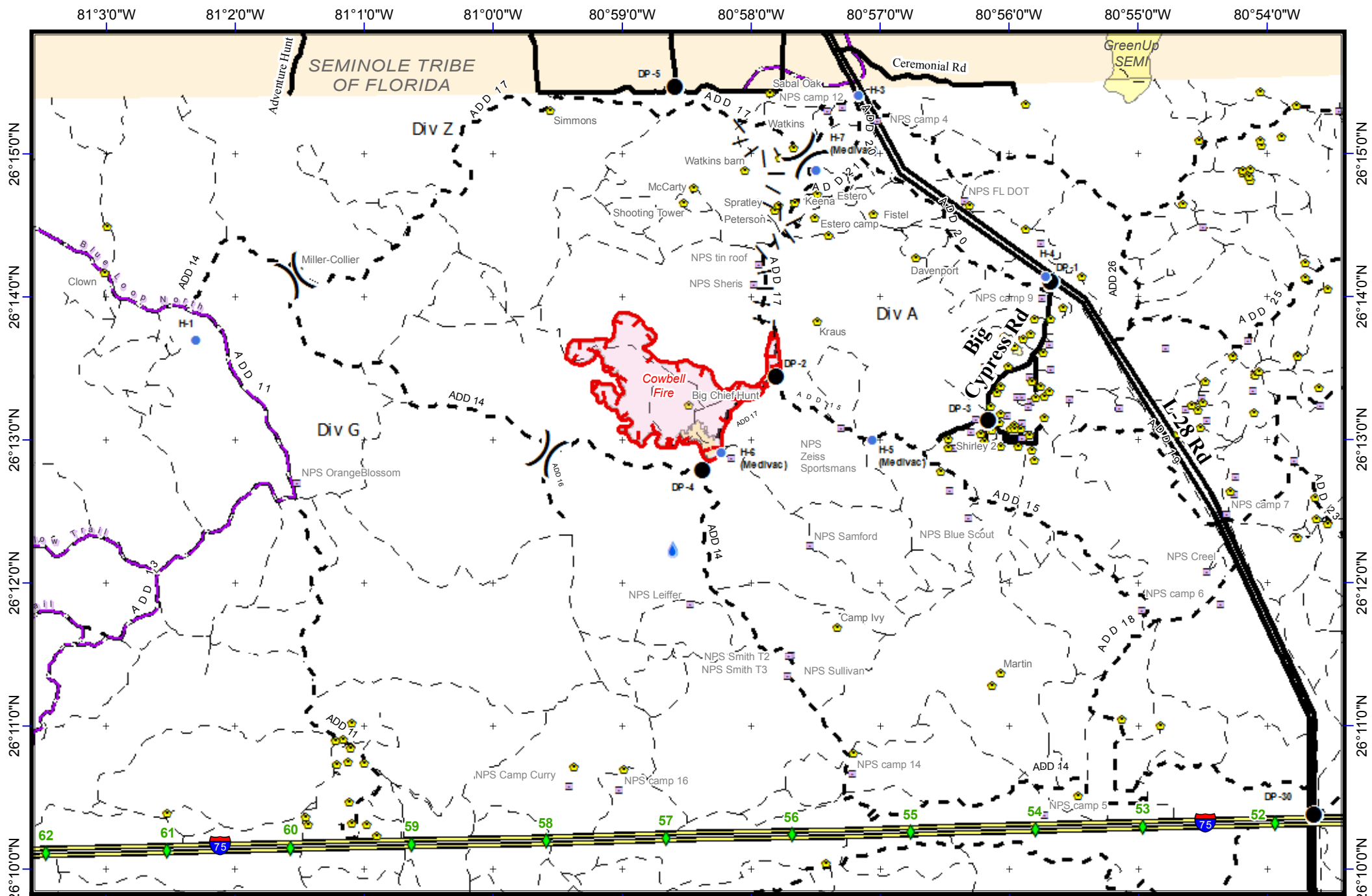
**Incident  
Maps**



81°28'W 81°24'W 81°20'W 81°16'W 81°12'W 81°8'W 81°4'W 81°0'W 80°56'W

26°24'N 26°20'N 26°16'N 26°12'N 26°8'N 26°4'N 26°0'N 25°56'N 25°52'N 25°48'N 25°44'N

BLA Hwy 1281  
Snake Rd  
W Feeder Rd  
CR 1283  
L-28 Rd  
W Boundary Rd  
Route 1235  
Bundschu Grade  
Nobles Grade  
Bear Island Gr  
Perocchi Grade  
Turner River Rd  
Deep Lake  
Upper Wagonwheel  
Concho Billie  
Birdohn Rd  
H.Q.  
Loop Rd  
Eleven Mile Rd  
Rock Road



**Cowbell Fire**  
FL-BCP-017033

**IAP Map**  
April 6, 2017  
Day Shift



- |                            |                      |                       |                                     |
|----------------------------|----------------------|-----------------------|-------------------------------------|
| ● Drop Point               | ■ Fire Perimeter     | ◆ Mile Marker         | - - - Non-Designated Trail (closed) |
| ● Helispot                 | 💧 Hydro Station      | ▬ I-75                | — Florida Trail                     |
| ┌─┐ Uncontrolled Fire Edge | 🏠 Private Structures | ▬ Improved Road       | ◻ <all other values>                |
| ▬ Proposed Burnout         | 🏠 NPS Property       | ▬ Primary Buggy Trail |                                     |
| ▭ Fire Polygon             |                      |                       |                                     |

449 Approximate Acres  
and Fire Perimeter  
as of 4/3/16 @ 1030



NAD 83 UTM 17  
0 0.5 1  
Miles



## PHONE LIST - COWBELL FIRE

| Position                      | Name             | Phone Number | Position                   | Name                  | Phone Number |
|-------------------------------|------------------|--------------|----------------------------|-----------------------|--------------|
| <b>COMMAND</b>                |                  |              | <b>PLANNING</b>            |                       |              |
| Incident Commander            | Steve Parrish    | 850-567-9507 | Chief                      | Dave Berens           | 601-319-6823 |
| Incident Commander (t)        | Lance Elmore     | 501-520-7276 | Chief                      | Steve Moore           | 803-360-6956 |
| Deputy Incident Commander     | Marty Bentley    | 423-584-1682 | Resource Unit Leader       | Melonie Sellers       | 601-508-8997 |
| Deputy Incident Commander (t) | Debbie Beard     | 850-524-9966 | Resource Unit Leader       | Carol O'Bryan         | 903-263-8704 |
| Liaison Officer               | Mike Wright      | 970-819-2890 | Resource Unit Leader (t)   | Jessica Hollingsworth | 540-383-6531 |
| Public Information            | Susie Heisey     | 912-286-3110 | Situation Unit Leader      | Jeff DeMatteis        | 601-415-9080 |
| Public Information            | Michelle Burnett | 803-920-6167 | Fire Behavior Analyst      | Gary Jarvis           | 251-288-1084 |
| Public Information (t)        | Donald Simon     | 910-975-1895 | Fire Behavior Analyst (t)  | Brenda Dale           | 906-280-3398 |
| Safety Officer                | Buddy Kelly      | 850-447-1344 | IMET                       | John Pendergrast      | 240-499-6649 |
| Safety Officer                | Mark Sullivan    | 205-531-7183 | GISS                       | Chris Evans           | 928-273-4203 |
| Safety Officer (t)            | Ken Gordon       | 850-688-4474 | GISS                       | Melanie Hans          | 618-315-5404 |
| Acting FMO                    | Byron Hart       | 850-264-9567 | GISS (t)                   | Jeff Adams            | 361-205-4744 |
|                               |                  |              | Demob                      | Thomas Barrett        | 478-550-6372 |
| <b>OPERATIONS</b>             |                  |              | Check In                   | Jeff Turner           | 865-684-0095 |
| Planning Ops                  | Steve Weaver     | 828-360-2476 | Check In (t)               | Tonia Johnson         | 678-927-1791 |
| Planning Ops (t)              | Paul Varnedoe    | 423-650-2184 | Training Specialist        | John Davis            | 231-878-0074 |
| Field Ops                     | Greg Brooks      | 828-421-5025 | Compter Tech               | Jerry Dronberger      | 479-747-7020 |
| Field Ops (t)                 | Mike Davis       | 936-219-7743 | Compter Tech               | Rusty Brown           | 478-973-6231 |
| Division A                    | Chad Cook        | 828-360-4985 | <b>LOGISTICS</b>           |                       |              |
| Division A (t)                | Heath Thomas     | 501-208-7077 | Chief                      | Willie Boston         | 770-328-3186 |
| Division G                    | E.J. Bunzendahl  | 859-556-2347 | Chief (t)                  | Tom Phillips          | 936-635-7154 |
| Division Z                    | Tom Crews        | 252-216-6361 | Deputy                     | Jerry Jussila         | 218-235-8983 |
| Division Initial Attack       | Kelly Cagle      | 336-302-0343 | Deputy                     | Susan Cornett         | 903-930-5321 |
| Division Parliament           | UNSTAFFED        |              | Supply Unit                | Tom Piper             | 727-514-5513 |
| Structure Protection Group    | Ryan Vice        | 979-215-1936 | Facilities Unit            | Glen Bee              | 208-847-5507 |
| Firing Group                  | Mary Owen        | 601-917-2860 | Ground Support Unit Leader | Michael Howarth       | 936-414-2697 |
| <b>AIR OPERATIONS</b>         |                  |              | Ordering Manager           | Sherri Kite           | 850-209-2150 |
| Air Operation Branch Director | Mike Rock        | 606-813-9750 | Receiving & Distribution   | Chris Combs           | 727-992-0046 |
| Air Support Group Supervisor  | Pete Kubiak      | 404-661-4819 | Base Camp Manager          | Mike Justus           |              |
| <b>FINANACE</b>               |                  |              | Communications             | George Rosenthal      | 936-707-1832 |
| Chief                         | Wanda Kelley     | 423-584-1472 | Communications             | Ron Regan             | 828-772-8514 |
| Chief (t)                     | Holly Cyprian    | 928-919-3027 | Comms Trailer              |                       | 772-631-2573 |
| Time Unit Leader              | Laura Wilson     | 765-427-7564 | Medical Unit Leader        | Gene-Paul Matson      | 434-665-0444 |
| Time Unit Leader (t)          | Sherise Foster   | 919-943-7843 | Medical Unit Leader (t)    | James Fortner         | 202-236-3139 |
| Comp/Claims                   | Terri McDonald   | 352-454-5385 | Security Mananger          | Sasha Herrin          | 239-300-5755 |
| Equipment Time Recorder (t)   | Donna Line       | 706-474-3216 | Security Mananger (t)      | RJ Seehase            | 414-739-5696 |
| Personel Time Recorder        | Sherise Foster   | 919-943-7843 |                            |                       |              |
| Personnel Time Recorder (t)   | Gustavo Vallejo  | 423-457-7403 |                            |                       |              |





## Medical Incident Report- "9 Line"

**FOR ALL MEDICAL EMERGENCIES: IDENTIFY ON SCENE INCIDENT COMMANDER BY NAME AND POSITION AND ANNOUNCE "MEDICAL EMERGENCY" TO INITIATE RESPONSE FROM IMT COMMUNICATIONS/DISPATCH.**

Use items one through nine to communicate situation to communications/dispatch.

**1. CONTACT COMMUNICATIONS/DISPATCH**

*Ex: "Communications, Div. Alpha. Stand-by for Priority Medical Incident Report." (If life threatening request designated frequency be cleared for emergency traffic.)*

**2. INCIDENT STATUS: Provide incident summary and command structure.**

|                          |  |   |
|--------------------------|--|---|
| Nature of Injury/Illness |  | <i>Describe the injury<br/>(Ex: Broken leg with bleeding)</i>     |
| Incident Name            |  | <i>Geographic Name + "Medical"<br/>(Ex: Trout Meadow Medical)</i> |
| Incident Commander       |  | <i>Name of IC</i>   |
| Patient Care             |  | <i>Name of Care Provider<br/>(Ex: EMT Smith)</i>                  |

**3. INITIAL PATIENT ASSESSMENT: Complete this section for each patient. This is only a brief, initial assessment. Provide additional patient info after completing this 9 Line Report.**

|  |               |      |         |
|--|---------------|------|---------|
| Number of Patients:  | Male / Female | Age: | Weight: |
| Conscious? <input type="checkbox"/> YES <input type="checkbox"/> NO = MEDEVAC! |               |      |         |
| Breathing? <input type="checkbox"/> YES <input type="checkbox"/> NO = MEDEVAC! |               |      |         |
| Mechanism of Injury:<br><i>What caused the injury?</i>                         |               |      |         |
| Lat/Long (Datum WGS84)   |               |      |         |

**4. SEVERITY OF EMERGENCY, TRANSPORT PRIORITY**

| SEVERITY   | TRANSPORT PRIORITY  |
|--|---|
| <input type="checkbox"/> <b>URGENT-RED</b> Life threatening injury or illness.<br><i>Ex: Unconscious, difficulty breathing, bleeding severely, 2° – 3° burns more than 4 palm sizes, heat stroke, disoriented.</i> | Ambulance or MEDEVAC helicopter. Evacuation need is IMMEDIATE.                        |
| <input type="checkbox"/> <b>PRIORITY-YELLOW</b> Serious Injury or illness.<br><i>Ex: Significant trauma, not able to walk, 2° – 3° burns not more than 1-2 palm sizes.</i>   | Ambulance or consider air transport if at remote location. Evacuation may be DELAYED. |
| <input type="checkbox"/> <b>ROUTINE-GREEN</b><br>Not a life threatening injury or illness.<br><i>Ex: Sprains, strains, minor heat-related illness.</i>   | Non-Emergency. Evacuation considered Routine of Convenience.                          |

**5. TRANSPORT PLAN:**

Air Transport: (Agency Aircraft Preferred)

|                                       |   |                                      |                                |
|---------------------------------------|---|--------------------------------------|--------------------------------|
| <input type="checkbox"/> Helispot     | <input type="checkbox"/> Short-haul/Hoist | <input type="checkbox"/> Life Flight | <input type="checkbox"/> Other |
| Ground Transport:                     |   |                                      |                                |
| <input type="checkbox"/> Self-Extract | <input type="checkbox"/> Carry-Out        | <input type="checkbox"/> Ambulance   | <input type="checkbox"/> Other |

**6. ADDITIONAL RESOURCE/EQUIPMENT NEEDS:**

|  |                                      |  |
|--|--------------------------------------|--|
| <input type="checkbox"/> Paramedic/EMT(s)                                  | <input type="checkbox"/> Crew(s)     | <input type="checkbox"/> SKED/Backboard/C-Collar |
| <input type="checkbox"/> Burn Sheet(s)                                     | <input type="checkbox"/> Oxygen      | <input type="checkbox"/> Trauma Bag              |
| <input type="checkbox"/> Medication(s)                                     | <input type="checkbox"/> IV/Fluid(s) | <input type="checkbox"/> Cardiac Monitor/AED     |
| <input type="checkbox"/> Other (i.e. splints, rope rescue, wheeled litter) |                                      |  |

**7. COMMUNICATIONS:**

| Function           | Channel Name/Number      | Receive (Rx)    | Tone/NAC *   | Transmit (Tx)   | Tone/NAC *   |
|--------------------|--------------------------|-----------------|--------------|-----------------|--------------|
| <i>Ex: Command</i> | <i>Forest Rpt, Ch. 2</i> | <i>168.3250</i> | <i>110.9</i> | <i>171.4325</i> | <i>110.9</i> |
| COMMAND            |                          |                 |              |                 |              |
| AIR-TO-GRND        |                          |                 |              |                 |              |
| TACTICAL           |                          |                 |              |                 |              |

\*(NAC for digital radio system)

**8. EVACUATION LOCATION:**

|   |  |
|---|--|
| Lat/Long (Datum WGS84)<br><i>EX: N 40 42.45' x W 123 03.24'</i> |  |
| Patient's ETA to Evacuation Location:                           |  |
| Helispot/Extraction Size and Hazards:                           |  |

**9. CONTINGENCY:**

|  |  |
|--|--|
| <b>Considerations:</b> <i>If primary options fail, what actions can be implemented in conjunction with primary evacuation method? Be thinking ahead...</i> | <b>REMEMBER:</b> <b>Confirm ETA's of resources ordered<br/>Act according to your level of training<br/>Be Alert. Keep Calm. Think Clearly. Act Decisively.</b> |
|--|--|