

Incident Action Plan



7. NO COMMUNICATION LINK WITH CREW
MEMBERS/SUPERVISOR

Day Operational Period

Sunday

4/9/17

0800-2000

Cowbell Fire

FL-BCP-017033

PPKX14 (1502)



INCIDENT OBJECTIVES	1. Incident Name Cowbell Fire	2. Date Prepared 4/8/17	3. Time Prepared 1700
4. Operational Period 4/9/17 0800 - 2000			
5. General Control Objectives For The Incident			
<u>Objectives for the Incident:</u> <ul style="list-style-type: none"> Protection of human life is top priority through the use of sound risk management decisions. Protect private property and infrastructure, federal facilities, critical transportation corridors, recreational and cultural resource values, T&E species and their habitat (e.g. Florida Panther, Florida bonneted bat, Red-Cockaded Woodpecker), and wilderness values through coordination with READS and following MIST Tactics on current and all initial and extended attack fires. Provide opportunities to communicate and educate the public on the role of fire in the BCP and FPR ecosystems through social media and other outlets. Provide training opportunities for Preserve, State, and local federal fire agency personnel to actively enhance successional planning of future firefighting personnel. Provide initial attack for Big Cypress National Preserve and Florida Panther Refuge. 			
<u>Control Objectives:</u> <ul style="list-style-type: none"> Keep fire: <ul style="list-style-type: none"> West of Add 14 and Add 17 on the eastern side South of the Preserve boundary on the northern side North of Interstate 75 on the south side East of ADD 11 on the west side To minimize impacts to high values including Seminole and Miccosukee tribal lands, Sanctuary community, and private land within and near to the boundaries of the Big Cypress National Preserve and Florida Panther Wildlife Refuge. Minimize smoke impacts on I-75, State Road 29 and 41 in order to avoid safety threats to the public. Utilize confine, contain, and point source protection strategies and tactics that commit responders only to operations where and when they can be successful and under conditions where important values actually at risk are protected with the least exposure necessary while sustaining relationships with the people we serve. 			
6. Weather forecast for Period			
High pressure will move east over the Atlantic waters early this week. East to Northeast winds will keep temperatures and RH outside of critical level. A warming trend is forecast over the next couple days.			
7. General Safety Message			
Look up, look down, look all around for hazards, recognize them and mitigate them.			
8. ATTACHMENTS (X IF ATTACHED)			
<div style="display: flex; justify-content: space-between;"> <div> <input checked="" type="checkbox"/> Organization List - ICS 203 <input checked="" type="checkbox"/> Division Assignment Lists - ICS 204 <input checked="" type="checkbox"/> Communications Plan - ICS 205 </div> <div> <input checked="" type="checkbox"/> Medical Plan - ICS 206 <input checked="" type="checkbox"/> Incident Map <input checked="" type="checkbox"/> Traffic Plan </div> <div> <input type="checkbox"/> _____ <input type="checkbox"/> _____ <input type="checkbox"/> _____ </div> </div>			
9. Prepared By (Planning Section Chief)		10. Approved By (Incident Commander)	
/s/ Dave Berens / Steve Moore		/s/ Lance Elmore	

ORGANIZATION ASSIGNMENT LIST		9.	Operations Section	
1. Incident Name <div>COWBELL FIRE</div>		Planning Operations		Steve Weaver, Paul Varnedoe (t)
		Field Operations		Greg Brooks, Mike Davis (t)
2. Date 04/08/17		3. Time 1700		
4. Operational Period 04/09/17 DAY (0800 – 2000)		a.		Divisions/Groups
5. Incident Commander and Staff		Division	A	Chad Cook, Heath Thomas (t)
Incident Commander	Steve Parrish, Lance Elmore (t)	Division	G	Chuck Alluisi
Deputy Incident Commander	Marty Bentley, Debbie Beard (t)	Division	Z	Tom Crews
Liaison Officer	Mike Wright, Pam Martin (t)	Division	Initial Attack	Chris Croddy
Safety Officer	Buddy Kelley, Mark Sullivan, Ken Gordon (t)	Division	Parliament & Misc Fires	UNSTAFFED
Information Officer	Susie Heisey, Susan Blake, Michelle Burnett, Donald Simon (t)	Group	Structure Protection	Ryan Vice
		Group	Firing	Mary Owen/Chris Richards (t)
6. Agency Reps				
Agency Administrator	Tammy Whittington (Big Cypress)			
Agency Administrator	J.D. Lee (Big Cypress)			
Chief of Fire & Aviation	Byron Hart (Big Cypress, Acting)			
Zone FMO	Cass Palmer (Panther)			
Collier Co. Sheriff	Lt. Jake Walker			
Dade Co. Sheriff	Mike Preston	b.		Air Operations Branch
Seminole Tribe of Florida	Grant Steelman			
		Air Operation Branch Director		Mike Rock
7. Planning Section		Air Support Group Supervisor		Pete Kubiak/Mike O'Leary (t)
Chief	Dave Berens, Steve Moore	Air Tactical Group Supervisor		Ken McLaughlin
Resources Unit	Melone Sellers, E.J. Bunzendahl (t) Jessica Hollingsworth (t)	Helibase Manager		Mike Roof
Situation Unit	Jeff DeMatteis, Carol O'Bryan (t)			
FBAN	Gary Jarvis, Brenda Dale (t), Kelly Cagle (t)	8.		Logistics Section
Air Resource Advisor	Andrea Holland	Chief		Willie Boston, Tom Phillips (t)
READ	Phil Wilson, Wylie Paxton	Deputy		Jerry Jussila, Susan Cornett
IMET	John Pendergrast	Supply Unit		Tom Piper
Geo. Info. Spec.	Chris Evans, Melanie Hans, Jeff Adams (t)	Facilities Unit		Glen Bee
Demob Unit	Thomas Barrett	Ground Support		Michael Howarth/Peter Lashoto
Status Check-In	Jeff Turner	Equipment Manager		
Training	John Davis	Ordering Manager		Sherri Kite
ITSS	Jerry Dronberger, Rusty Brown, Nikita Carty (t)	Receiving & Distrib. Mgr.		Chris Combs/Jonathan Lampley (t)
Documentation	Bob Sobczak (t)	Base Camp Manager		Mike Justus
10. Finance Section		Communications Unit		George Rosenthal, Ron Regan
Chief	Wanda Kelley, Holly Cyprian (t)	Incident Communication Mgr.		
Time Unit	Laura Wilson, Sherise Foster (t)	Rado		Mark Pomponio, Federico Avakian, Brian Gierzyk, Scott Brownlow
Equipment Time Unit	Donna Line (t)	Medical Unit Leader		Gene-Paul Matson, James Fortner (t)
Cost Unit	Carolyn Hughes, Janice Lowe (t)	Security Manager		Sasha Herrin, RJ Seehase (t)
Comp/Claims	Terri McDonald, David Easter(t)	Security		Brian Phillips
Procurement	Leslie Solberg			
Personnel Time Recorder	Gustavo Vallejo (t)			
Prepared by (RESL) /s/ Melonie Sellers / Jessica Hollingsworth (t)				



Fire Weather Forecast

FORECAST NO: 7
PREDICTION FOR: Sunday Day Shift
SHIFT DATE: April 8, 2017
FORECAST ISSUED: 1900 April 8, 2017

NAME OF FIRE: Cowbell Fire
UNIT: Big Cypress National Preserve
Incident Meteorologist: *John Pendergrast*
240-499-6649

DISCUSSION: High pressure will move east over the Atlantic waters early this week. East to Northeast winds will keep temperatures and RH outside of critical level. A warming trend is forecast over the next couple days.

TODAY (SUNDAY DAY SHIFT):...

WEATHER: Partly cloudy with patchy morning fog. Becoming warmer.
WIND (20 FT): Northeast 5 to 10 mph becoming East 10 to 15 mph in the afternoon.
MAX TEMPERATURES: 83 to 87.
MIN RH: 40%.
LAL: 1 Chance measurable rain: 0%
DISPERSION: 55 MAX MIXING HEIGHT 5300 TRANSPORT WINDS: East 15 to 20 mph.

TONIGHT (SUNDAY NIGHT):

WEATHER: Mostly clear and cool. Patchy fog and haze by daybreak. Light Northeast wind..
WIND (20 FT): Northeast to East 5 to 10 mph in evening. Becoming Northeast 1-2 mph.
MIN TEMPERATURES: 58 to 62F.
MAX RH: 100%. LVORI 9 (max).
LAL: 1 Chance measurable rain: 0%.

MONDAY:

WEATHER: Partly cloudy, and warm.
WIND (20 FT): Northeast 5 to 10 mph early becoming East 10 to 15 mph in the afternoon.
MAX TEMPERATURES: 85 to 88F.
MIN RH: 40%.
LAL: 1 Chance measurable rain: 0%.
DISPERSION: 58 MAX MIXING HEIGHT 5600 TRANSPORT WINDS East 15 to 20 mph.

GENERAL OUTLOOK TUESDAY TO THURSDAY: High Pressure over the southeast will migrate east over the Atlantic Ocean. Local winds will remain East to Northeast with no critical fire weather conditions expected. no rain is forecast through the period.

Tuesday and Wednesday: East to Northeast winds 5 to 10 mph becoming 10 to 15 mph with gusts to 20 mph in the afternoons. East 10 to 15 mph on Thursday.
WEATHER/TEMPERATURE: Partly cloudy through the period. Lows in the Low 60s. Highs in the Upper 80s.
MIN RH: 45 to 50 percent Tuesday and Wednesday. 50 percent Thursday.
NIGHT TIME RECOVERY: Near 100 percent each night.



Current Incident
area RAWS
conditions

Sunrise Sunday: 7:09 am
Sunset Sunday: 7:46 pm

Source: US Naval Observatory

FIRE BEHAVIOR FORECAST

FORECAST NUMBER: #07	TYPE OF FIRE: Wildland
FIRE NAME: Cowbell	OPERATIONAL PERIOD: 04/09/2017
DATE ISSUED: 04/08/2017	TIME ISSUED: 2000
UNIT: Big Cypress Preserve	SIGNED: Gary Jarvis FBAN 251.288.1084

FUEL ASSUMPTIONS:

Primary fuels consist of grass, shrub, shrub with pine overstory and timber litter. Current fuel conditions are favorable for very active fire behavior within the grass and shrub fuels. The current drought conditions have led to both live and dead fuel moistures to reach areas of concern. Expect all fuels to burn readily, including those that appear green.

The fuel moisture for today is:

Calculated 1 hr fuel 6%, 10 hr fuel 7%, 100 hr fuel 13%, 1000 hr fuel 16%

ERC levels above 97 Percentile

Critical fire behavior thresholds: 1 HR Fuel Moisture <6%, RHs below 40% and a Dispersion Index greater than 60.

WEATHER: Partly cloudy with patchy morning fog. Becoming warmer.

WIND (20 FT): Northeast 5 to 10 mph becoming East 10 to 15 mph in the afternoon.

MAX TEMPERATURES: 83 to 87.

MIN RH: 40%.

LAL: 1 Chance measurable rain: 0%

DISPERSION: 55 MAX MIXING HEIGHT 5300 TRANSPORT WINDS: East 15 to 20 mph.

General Fire Behavior Forecast: **... no wetting rain forecasted through next week...**

Expect the fire to burn very active today. 80-100% consumption of heavies, snags and duff. Intense burning with torching and spotting should be anticipated.

Specific:

Cowbell: If the fire gets established it will have the fuel continuity and wind direction to move it toward the west and southwest. Smoke on I-75 could become an issue if fire develops a column.

Parliament and Greenup – The fires will continue to smolder and burn actively in receptive fuel along perimeter until adequate rainfall is received.

Initial Attack: Moderate to heavy resistance can be expected on any new starts in the grass/brush fuels. Expect rapid rates of spread, especially in the grass models and anticipate some spotting to challenge your control efforts.

PREDICTIONS FOR MOST ACTIVE TIME OF PEAK BURNING PERIOD USING WEATHER FROM INCIDENT IMET

Fuel Model	Fire Behavior
Grass	ROS 30 to 50 ch/hr (.3 to .6 mph), FL 7-10 ft.
Shrub	ROS 15 to 25 ch/hr, (.2 to .3 mph) FL 8-11 ft
Timber Litter (Cypress)	ROS 4 to 8 ch/hr (.1 mph), FL 3-4 ft
Spotting	.2 miles grass and .4 miles torching pine or palm trees
Probability of Ignition	59%

AIR OPERATIONS: Patchy morning fog and inversion could hinder air operations in the morning.

FIRE BEHAVIOR SAFETY: Look for burned snags if you are near burn area. The fire may have partially burned snags which could fall at any time.

Division/Group Assignment List (ICS 204 WF)

1. Incident Name:				3.			
Cowbell Fire				Branch:		A	
2. Operational Period:							
Date/Time From: 04/09/17 0800		Date/Time To: 04/09/17 2000					
4. Operations Personnel							
AIR ATTACK SUPERVISOR				FIELD OPERATIONS		Greg Brooks/Mike Davis (t)	
DIVISION/GROUP SUPERVISOR		Chad Cook Heath Thomas (t)		PLANNING OPERATIONS		Steve Weaver Paul Varnedoe (t)	
5. Resources Assigned this Period							
Strike Team / Task Force / Resource Designator		LWD	Leader	Number Persons	Drop Off PT./Time	Pick Up PT./Time	
MOD Ashley	O-1	4/09	Ben Sanders	8	ICP/0800	ICP/2000	
MOD Great Smoky	O-102	4/11	Josh Nicholas	8	ICP/0800	ICP/2000	
Transport Buggy	E-38	4/06	Captain Steve-Wesley Mossen	1	ICP/0800	ICP/2000	
Transport Buggy	E-39	4/06	Captain Steve-Clinton Weaks	1	ICP/0800	ICP/2000	
Transport Buggy	E-40	4/06	Captain Steve	1	ICP/0800	ICP/2000	
Transport Buggy	E-41	4/06	Captain Steve-Timmy Stiltner	1	ICP/0800	ICP/2000	
Masticator	E-6	4/17	Mike Joel	1	ICP/0800	ICP/2000	
HEQB	O-25	4/16	Eric Moore	1	ICP/0800	ICP/2000	
EMTP	O-36	4/18	Frank Abel	1	ICP/0800	ICP/2000	
SOFR	O-89	4/19	John Foley	1	ICP/0800	ICP/2000	
READ	O-32	4/09	Wylie Paxton	1	ICP/0800	ICP/2000	
6. Control Operations/Work Assignments:							
Task: <ul style="list-style-type: none"> Anchor suppression work at fire perimeter on ADD 17/14 intersection Patrol and conduct mop up, as appropriate Coordinate with firing group to conduct strategic firing operations to minimize fire impacts Coordinate with Div Z on triage of structures for point protection Complete vegetative mastication on ADD 15 							
Purpose: <ul style="list-style-type: none"> To keep fire confined and contained west of ADD 17 on east flank of fire To protect structures 							
End State: <ul style="list-style-type: none"> Control fire perimeter west of ADD 17 to eliminate threat to Sanctuary area structures 							
7. Special Instructions: Follow tracked vehicle requirement restrictions. Establish and maintain LCES during operational period.							
Utilize MIST tactics as outlined in Fire Operations Guide for BICY. Once ADD 15 road is complete move masticator and HEQB to DIV G. Comms trailer Phone (772) 631-2573. Review Updated Medical Plan.							
8. Division/Group Communication Summary							
Function	Channel	RX Frequency N/W	RXTone/NAC	TX Frequency N/W	TX Tone/NAC	Mode	
COMMAND	12	166.6125		168.4000	110.9	A	
TACTICAL	4	168.6000		168.6000		A	
AIR TO GROUND	10	168.3250		168.3250		A	
9. Prepared By (Resource Unit Leader)		Approved By (Planning Section Chief)				Date	Time
/s/Melonie Sellers/Jessica Hollingsworth (t)		Dave Berens/Steve Moore				04/08/17	16:00

Division/Group Assignment List (ICS 204 WF)

1. Incident Name:				3.			
Cowbell Fire				Branch:		Division/Group	
2. Operational Period:						G	
Date/Time From: 04/09/17 0800		Date/Time To: 04/09/17 2000					
4. Operations Personnel							
AIR ATTACK SUPERVISOR				FIELD OPERATIONS		Greg Brooks/Mike Davis (t)	
DIVISION/GROUP SUPERVISOR		Chuck Alluisi		PLANNING OPERATIONS		Steve Weaver Paul Varnedoe (t)	
5. Resources Assigned this Period							
Strike Team / Task Force / Resource Designator			LWD	Leader	Number Persons	Drop Off PT./Time	Pick Up PT./Time
HC2IA Colorado BLM C-3			4/09	Ian Barrett	20	ICP/0800	ICP/2000
TFLD O-61			4/19	Mario Marquez	1	ICP/0800	ICP/2000
ENG 6 Firetrax E-86			4/19	Carlos Gutierrez	3	ICP/0800	ICP/2000
ENG 6 Wildlands Fire Service E-87			4/19	Brian Terry	3	ICP/0800	ICP/2000
SOFR O-63			4/19	David Dallison	1	ICP/0800	ICP/2000
READ O-33			4/18	Phil Wilson	1	ICP/0800	ICP/2000
FOBS O-24			4/19	Gabe Gamino	1	ICP/0800	ICP/2000
FOBS (t) O-84			Local	Mindy Wright	1	ICP/0800	ICP/2000
6. Control Operations/Work Assignments:							
Task:							
<ul style="list-style-type: none"> Initiate vegetative mastication on ADD14 at DP 15 down to ADD 11 road. Continue south on ADD 11 to Instate I-75 Complete Improving line in DIV G from DP15 to DP16 							
Purpose:							
<ul style="list-style-type: none"> To keep fire contained east of ADD 11 							
End State:							
<ul style="list-style-type: none"> Confine fire perimeter to reduce threats to resource values at risk 							
7. Special Instructions: Establish and maintain LCES during operational period.							
Utilize MIST tactics as outlined in Fire Operations Guide for BICY. Comms trailer Phone (772) 631-2573							
Support human repeater function as needed. Follow tracked vehicle requirement restriction. Review Updated Medical Plan. Identify and migrate hazards to all cameras in DIV G.							
8. Division/Group Communication Summary							
Function	Channel	RX Frequency N/W	RXTone/NAC	TX Frequency N/W	TX Tone/NAC	Mode	
COMMAND	13	168.7000		170.9750	110.9	A	
TACTICAL	5	168.2500		168.2500		A	
AIR TO GROUND	10	168.3250		168.3250		A	
9. Prepared By (Resource Unit Leader)		Approved By (Planning Section Chief)				Date	Time
/s/Melonie Sellers/Jessica Hollingsworth(t)		Dave Berens/Steve Moore				04/08/17	16:00

Division/Group Assignment List (ICS 204 WF)

1. Incident Name:				3.			
Cowbell Fire				Branch:		Z	
2. Operational Period:							
Date/Time From: 04/09/17 0800		Date/Time To: 04/09/17 2000					
4. Operations Personnel							
AIR ATTACK SUPERVISOR				FIELD OPERATIONS		Greg Brooks/Mike Davis (t)	
DIVISION/GROUP SUPERVISOR		Tom Crews		PLANNING OPERATIONS		Steve Weaver Paul Varnedoe (t)	
5. Resources Assigned this Period							
Strike Team / Task Force / Resource Designator		LWD	Leader		Number Persons	Drop Off PT./Time	Pick Up PT./Time
MOD Buffalo	O-21	4/16	Josh Hampton		6	ICP/0800	ICP/2000
EMTF	O-17	4/15	Jim Stout		1	ICP/0800	ICP/2000
6. Control Operations/Work Assignments:							
Task: <ul style="list-style-type: none"> Continue suppression work at fire perimeter from Div A break Complete triage of structures in Div Z and Div A for point protection Utilize perimeter trail for firing operations north and east if needed 							
Purpose: <ul style="list-style-type: none"> To keep fire confined and contained south of Preserve Boundary and west of ADD 17 To protect structures 							
End State: <ul style="list-style-type: none"> Control fire perimeter south and east of ADD 17 to eliminate threat to Seminole Tribe of Florida and Ceremonial Area 							
7. Special Instructions: Establish and maintain LCES during operational period.							
Utilize MIST tactics as outlined in Fire Operations Guide for BICY. Comms trailer Phone (772) 631-2573. Review Updated Medical Plan.							
8. Division/Group Communication Summary							
Function	Channel	RX Frequency N/W	RXTone/NAC	TX Frequency N/W	TX Tone/NAC	Mode	
COMMAND	12	166.6125		168.4000	110.9	A	
TACTICAL	8	166.7500		166.7500		A	
AIR TO GROUND	10	168.3250		168.3250		A	
9. Prepared By (Resource Unit Leader)		Approved By (Planning Section Chief)				Date	Time
/s/Melonie Sellers/Jessica Hollingsworth(t)		Dave Berens/Steve Moore				04/08/17	16:00

Division/Group Assignment List (ICS 204 WF)

1. Incident Name:				3.		
Cowbell Fire				Branch:		Division/Group IA
2. Operational Period:						
Date/Time From: 04/09/17 0800		Date/Time To: 04/09/17 2000				
4. Operations Personnel						
AIR ATTACK SUPERVISOR				FIELD OPERATIONS		Greg Brooks/Mike Davis (t)
DIVISION/GROUP SUPERVISOR		Kris Croddy		PLANNING OPERATIONS		Steve Weaver Paul Varnedoe (t)
5. Resources Assigned this Period						
Strike Team / Task Force / Resource Designator		LWD	Leader	Number Persons	Drop Off PT./Time	Pick Up PT./Time
TFLD	O-60	4/19	Harold Kibbe	1	ICP/0800	ICP/2000
MOD EE	O-67	4/18	Matt Britt	8	ICP/0800	ICP/2000
ENG6 Big Thickett	E-57	4/19	Gus Schaefer	2	ICP/0800	ICP/2000
ENG6 K31	E-7	4/15	Steven Staples	2	ICP/0800	ICP/2000
ENG6 #602	O-2.2/2.3	4/10	Nate Ochs/Jake Hauser (t)	2	ICP/0800	ICP/2000
ENG6 Attack One	E-58	4/19	Kevin Carter	2	ICP/0800	ICP/2000
Duece Buggy IA #607	E-89	4/09	Lucas Hunkler	3	ICP/0800	ICP/2000
EMTF	O-18	4/15	Bob Bruington	1	ICP/0800	ICP/2000
6. Control Operations/Work Assignments:						
Task: <ul style="list-style-type: none"> Coordinate with BICY duty officer for notification of newly reported ignitions Coordinate initial attack action with assigned aviation and /or ground assets Determine IA resource prepositioning needs across BICY and FPWR 						
Purpose: <ul style="list-style-type: none"> Ensure communications with FL Hwy Patrol regarding smoke on I-75 Ensure timely response on any IA within BICY and FPWR 						
End State: <ul style="list-style-type: none"> Protect human life Minimize environment damage to protect habitat of threatened and endangered species Minimize damage to public and private property 						
7. Special Instructions: Follow tracked vehicle requirement restrictions. Establish and maintain LCES during operational period.						
Utilize MIST tactics as outlined in Fire Operations Guide for BICY. Comms trailer Phone (772) 631-2573. Review Updated Medical Plan.						
8. Division/Group Communication Summary						
Function	Channel	RX Frequency N/W	RX Tone/NAC	TX Frequency N/W	TX Tone/NAC	Mode
COMMAND	1	172.4250	1035	170.1000	1035	D
COMMAND	2	172.4250	1035	171.6250	1035	D
COMMAND	7	164.6250	1188	163.1500	1188	D
TACTICAL	9	166.8250		166.8250		A
AIR TO GROUND	6	169.1125		169.1125		A
9. Prepared By (Resource Unit Leader)		Approved By (Planning Section Chief)			Date	Time
/s/Melonie Sellers/Jessica Hollingsworth(t)		Dave Berens/Steve Moore			04/08/17	16:00

1. Incident Name:		3.				
Cowbell Fire		Branch:	Division/Group Parliament/ Misc Fire Patrol			
2. Operational Period:						
Date/Time From: 04/09/17 0800	Date/Time To: 04/09/17 2000					
4. Operations Personnel						
AIR ATTACK SUPERVISOR		FIELD OPERATIONS	Greg Brooks/Mike Davis (t)			
DIVISION/GROUP SUPERVISOR		PLANNING OPERATIONS	Steve Weaver Paul Varnedoe (t)			
5. Resources Assigned this Period						
Strike Team / Task Force / Resource Designator	LWD	Leader	Number Persons	Drop Off PT./Time	Pick Up PT./Time	
unstaffed						
6. Control Operations/Work Assignments:						
Task:						
<ul style="list-style-type: none">Patrol and monitor fires on BICY and FPWR with aviation and ground assets as directed by lead OSCCommensurate with values at riskMonitor fires for further suppression management action						
Purpose:						
<ul style="list-style-type: none">Assure suppression action taken limits environmental impact, consistent with MIST tactics						
End State:						
<ul style="list-style-type: none">Protect human lifeMinimize damage to public and private propertyMinimize environmental damage to protect habitat of threatened and endangered species						
7. Special Instructions: Follow tracked vehicle requirement restrictions. Establish and maintain LCES during operational period.						
Utilize MIST tactics as outlined in Fire Operations Guide for BICY. Comms trailer Phone (772) 631-2573. Review Updated Medical Plan.						
8. Division/Group Communication Summary						
Function	Channel	RX Frequency N/W	RXTone/NAC	TX Frequency N/W	TX Tone/NAC	Mode
COMMAND	7	164.6250	1188	163.1500	1188	D
TACTICAL	11	166.7250	0659	166.7250	0659	D
AIR TO GROUND	10	168.3250		168.3250		A
9. Prepared By (Resource Unit Leader)		Approved By (Planning Section Chief)		Date	Time	
/s/Melonie Sellers/Jessica Hollingsworth(t)		Dave Berens/Steve Moore		04/08/17	16:00	

Division/Group Assignment List (ICS 204 WF)

1. Incident Name:				3.			
Cowbell Fire				Branch:		Division/Group Structure Protection Group	
2. Operational Period:							
Date/Time From: 04/09/17 0800		Date/Time To: 04/09/17 2000					
4. Operations Personnel							
AIR ATTACK SUPERVISOR				FIELD OPERATIONS		Greg Brooks/Mike Davis (t)	
DIVISION/GROUP SUPERVISOR		Ryan Vice		PLANNING OPERATIONS		Steve Weaver Paul Varnedoe (t)	
5. Resources Assigned this Period							
Strike Team / Task Force / Resource Designator		LWD	Leader	Number Persons	Drop Off PT./Time	Pick Up PT./Time	
HC1 Midewin	C-2	4/10	Jerry Huffman	18	ICP/0800	ICP/2000	
STPS	O-4.62	4/16	Glenn Phillips	1	ICP/0800	ICP/2000	
TFLD	O-106.1	4/16	Wes Richardson	1	ICP/0800	ICP/2000	
TFLD (t)	O-106.3	4/16	Darren Gunn	1	ICP/0800	ICP/2000	
MOD BIFZ #2	O-106	4/16	Brett Morefield	8	ICP/0800	ICP/2000	
ENG3 #321	E-98	4/19	John Wynn	5	ICP/0800	ICP/2000	
ENG3 #51	E-99	4/19	Eric Borlaug	5	ICP/0800	ICP/2000	
ENG3 #335	E-100	4/19	Gregg Lindquist	5	ICP/0800	ICP/2000	
ENG6 WFS	E-8	4/16	Dave Sechrist	3	ICP/0800	ICP/2000	
ENG6 WFS	E-9	4/16	Saul Irvin	3	ICP/0800	ICP/2000	
ENG6 Attack One	E-10	4/16	Wes Coleman	2	ICP/0800	ICP/2000	
ENG6 CSP661	E-59	4/20	Jason Johnson	2	ICP/0800	ICP/2000	
SOFR	O-38	4/16	Joe Fowler	1	ICP/0800	ICP/2000	
FOBS	O-22	4/16	Ron Rockis	1	ICP/0800	ICP/2000	
FOBS	O-23	4/18	Luke Hurley	1	ICP/0800	ICP/2000	
EMTF	O-15	4/16	Matt Lancaster	1	ICP/0800	ICP/2000	
6. Control Operations/Work Assignments:							
Task: <ul style="list-style-type: none"> Affirm contact procedures with Collier County EMS and Sheriff Dept to assure smooth communication in event of community evacuation needs Install hose lays and sprinkler kits to implement structure protection plan within Div Z, A and Sanctuary community as needed Coordinate with landowners to determine special considerations and road or trail access 							
Purpose: <ul style="list-style-type: none"> Ensure timely response to protect human life, property and access 							
End State: <ul style="list-style-type: none"> Maintain communications with appropriate county emergency management and law enforcement agencies to complete timely evacuations 							
7. Special Instructions: Establish and maintain LCES during operational period. Transport structure protection supplies to Sanctuary. Comms trailer Phone (772) 631-2573. Review Updated Medical Plan.							
8. Division/Group Communication Summary							
Function	Channel	RX Frequency N/W	RXTone/NAC	TX Frequency N/W	TX Tone/NAC	Mode	
COMMAND	13	168.7000		170.9750	110.9	A	
COMMAND	12	166.6125		168.4000	110.9	A	
TACTICAL	11	166.7250	0659	166.7250	0659	D	
AIR TO GROUND	10	168.3250		168.3250		A	
9. Prepared By (Resource Unit Leader)		Approved By (Planning Section Chief)				Date	Time
/s/Melonie Sellers/Jessica Hollingsworth(t)		Dave Berens/Steve Moore				04/08/17	16:00

Division/Group Assignment List (ICS 204 WF)

1. Incident Name:				3.		
Cowbell Fire				Branch:		Division/Group Firing Group
2. Operational Period:						
Date/Time From: 04/09/17 0800		Date/Time To: 04/09/17 2000				
4. Operations Personnel						
AIR ATTACK SUPERVISOR				FIELD OPERATIONS		Greg Brooks/Mike Davis (t)
DIVISION/GROUP SUPERVISOR		Mary Owen O-96 Chris Richards (t)		PLANNING OPERATIONS		Steve Weaver Paul Varnedoe (t)
5. Resources Assigned this Period						
Strike Team / Task Force / Resource Designator		LWD	Leader	Number Persons	Drop Off PT./Time	Pick Up PT./Time
Aerial Ignition	O-87	4/10	Adam Kunce	1	ICP/0800	ICP/2000
Slimer Suppression Buggy	O-97	4/8	Matt Mateo	3	ICP/0800	ICP/2000
Seminole Suppression Buggy	E-60	4/13	Mike Lightsey	2	ICP/0800	ICP/2000
BICY Suppression Buggy #2	O-76	4/15	Justin Phippen	2	ICP/0800	ICP/2000
BICY Suppression Buggy #3	O-78	4/16	Tracy Milakovic (O-16, EMTF)	1	ICP/0800	ICP/2000
6. Control Operations/Work Assignments: Task: <ul style="list-style-type: none"> Continue strategic firing operations as coordinated with DIV A Purpose: <ul style="list-style-type: none"> No intent to complete a large scale burnout, instead a purposeful firing operation to confine and contain the fire along ADD 17/ADD 14 to interstate I-75 Complete point protection techniques around structures in DIV A and DIV Z End State: <ul style="list-style-type: none"> Keep fire north and west of ADD 17 to protect Sanctuary Community and Ceremonial and Tribal Lands 						
7. Special Instructions: Follow tracked vehicle requirement restrictions. Establish and maintain LCES during operational period. Utilize MIST tactics as outlined in Fire Operations Guide for BICY. Comms trailer Phone (772) 631-2573. Review Updated Medical Plan.						
8. Division/Group Communication Summary						
Function	Channel	RX Frequency N/W	RX Tone/NAC	TX Frequency N/W	TX Tone/NAC	Mode
COMMAND	13	168.7000		170.9750	110.9	A
COMMAND	12	166.6125		168.4000	110.9	A
TACTICAL	4	168.6000		166.6000		A
AIR TO GROUND	10	168.3250		168.3250		A
9. Prepared By (Resource Unit Leader)		Approved By (Planning Section Chief)			Date	Time
/s/Melonie Sellers/Jessica Hollingsworth (t)		Dave Berens/Steve Moore			04/08/17	16:00

AIR OPERATIONS SUMMARY

OPERATIONAL PERIOD DATE: 04-09-2017

0900-2000

1. INCIDENT NAME: Cowbell	2. PREPARED BY: Mike Rock	PREPARED DATE/TIME: 04/08/2017 1730	3. Sunrise: 0709 Sunset: 1946
4. REMARKS (Safety Notes, Hazards, Air Operations Special Equipment,, etc.): Medivac Aircraft: 5HQ MTR- Located along state road 29.Fire Dispatch gets MTR activity every morning Do not over fly structures with external load missions. All aircraft should use strobes and running lights in smoky conditions. Hazards: Snags, non-incident aircraft, and winds. Contract helicopter working special use permit in North Central portion of BICY. Area identified on pilot briefing board. ATGS has air to air communications.			5. Squawk 1255 TFR—7/4656 ZMA FL, Airspace 25 nm NE of Ochopee SFC 3000ft. NOTAM – 04/054 – Airspace firefighting aircraft 5nm of (9FL7) SFC 2000ft.

6. PERSONNEL	Phone	7. FREQUENCIES	AM	FM	8. FIXEDWING	Base
AOBD: Mike Rock ASGS: Pete Kubiak ASGS(T) Mike O'Leary	606-813-9750 404-661-4819 239-336-9789	Air/Air Rotor	123.575		Air Attack- Air Attack	197GB – Aero Commander MKY 4566M Baron MKY
ATGS: Ken McLaughlin ATGS – James Gresham	813-997-0317 208-660-4139	Air/Air Fixed Wing	118.825		T-801 T-493	Seat –IMM, Start 0900 Seat —IMM, Start 0900
Oasis Helibase (9FL7) HEB2 Mike Roof Immokalee Airport Seat Manager – Jack Benzilio HEB2 Connie Fox HMGB – Tracy Elliott	239-695-0278 702-610-4574 970-799-1232 303-854-8470 303-910-7619	Air/Ground Cowbell		168.3250 RX/TX (A)		
		Air/Ground IA		169.1125 RX/TX (A)		
		Flight Following (BICY)		169.7250 RX N1514 163.3875 TX N1738		
Big Cypress Fire Dispatch	239-695-9280 x 104	Air/Guard		168.6250 RX/TX Tone 110.9		
		Deck		166.7750		

9. HELICOPTERS (Use Additional Sheets As Necessary)

FAA N# or Designator	TY	MAKE/MODEL	BASE	START	REMARKS	FAA N# or Designator	TY	MAKE/MODEL	BASE	START	REMARKS
206RW	3	Bell 206	Oasis	0900	Park Helicopter	1KA	1	K-MAX	Oasis	0900	Bucket
0HH	3	Bell 206	Oasis/RON-Miami	0900	Recon / Bucket	612CK	1	S-61	IMM	0900	Tanked
5HQ	2	Bell 205++	Oasis	0900	Crew/ Bucket	718	1	CH-54	IMM	0900	Tanked
6HX	2	Bell 205	Oasis	0900	Crew/Bucket	28HX	2	205A1	Oasis	0900	Crew / Bucket

10. TASK/MISSION/ASSIGNMENT (Use ICS-220a if additional space needed; Type/Function includes: Air Tactical, Retardant, Recon, Personnel Transport, Water Dropping, etc.)

TYPE/FUNCTION	NAME OF PERSONNEL OR CARGO (if applicable) OR INSTRUCTIONS FOR TACTICAL AIRCRAFT	MISSION START	FLY FROM	FLY TO
Mapping	As Requested	0930		
Reconnaissance	As Requested	0930		
Water Drops	As Requested	0930		

HEALTH AND SAFETY MESSAGE

SAFETY starts with ***YOU***

We are **ALL** accountable for **SAFE** behaviors

INCIDENT: **Cowbell Fire & IA**

DATE: April 9, 2017

TIME: 0800-2000

Major Hazards and Risks:

DRIVING and COMPLACENCY

COMPLACENCY – We have been through two red flag, intense situation awareness, LCES days, and we made it. Now it's time relax, and take a deep breath, right?

WRONG. Everyone did a great job preparing and getting through what could have been our worst days so far, but it's not over. Fuels are still dry, humidity's low, and the potential is still there for anything to happen.

Don't become complacent, and let your guard down. We are still going to have hazards and risks such as ingress and egress by vehicles, UTV's and buggies. Ensure that hazards are identified and communicated to all resources. Maintain your situational awareness and don't let something fall through the cracks.



18.TAKING A NAP NEAR THE FIRELINE

Watch Out Situation of the Day

Complacency may lead to hazardous situations



Speed Limit Strictly Enforced!

DRIVING – This is one of the biggest hazards we face each day. Maintain at least a 3 Second (Plus) Following Distance; add an additional second if driving an engine or buggy transport. Obey all state and local traffic laws AT ALL TIMES. Be careful who you pass, it may be the Safety Officer or better yet the Incident Commander!

Incident Safety Officers:

Ken Gordon (T), Mark Sullivan, Buddy Kelley, Joe Fowler, David Dallison & John Foley

Incident Safety Analysis 215a

Cowbell Fire & Initail Attack - Sunday, April 09, 2017

8. Location	9. Hazard	6. Control or Abatement Action (Engineering, Administrative, PPE, Avoidance, Education, etc)
DIVS ALL / IA	Extreme Fire Behavior	<ul style="list-style-type: none"> ~ Share weather observations with all personnel assigned to division. ~ Establish "Trigger Points" to withdraw. ~ Use "Risk Management" process prior to engaging in suppression actions, refer to page 1, IRPG.
DIVS ALL / IA	Helicopter Operations	<ul style="list-style-type: none"> ~ Stay clear of all bucket drops when suppression actions are in place and allow 1 minute prior to re-entry. ~ Monitor Air-Ground AG communications. ~ Follow aviation safety guidelines in IRPG and IHOG.
DIVS ALL / IA	Injury & Medical Emergency	<ul style="list-style-type: none"> ~ For Medical Incident, follow the 9 line procedures. ~ For "air hoist capability" or "snake bite treatment" contact Radio call sign '784' to request assistance. ~ Assist injured employee with appropriate medical care. ~ Use EMT's on Division for initial care. ~ Follow medical protocol as outlined in ICS-206 & IRPG Pgs 99-108
DIVS ALL / IA	Driving & Traffic	<ul style="list-style-type: none"> ~ Practice "Defensive Driving" techniques traveling on all roads and city streets. ~ Use spotters when backing ~ Keep clutter off dash and inside cab. ~ Follow Driving LCES (Lights, Chock blocks, Emergency brake, Seat belts. ~ Always use headlights when on dusty roads. ~ Yield to pedestrians and bicycles. ~ Observe posted speed limits. ~ Use the 3 second rule for following distance when driving. ~ Avoid distractions (eating, cell phones, radio). ~ Ensure that windshields are kept clean of dust and bugs.
DIVS A & Z	Structure Protection & HAZMAT	<ul style="list-style-type: none"> ~ Review Watch outs, IRPG page 12. Do Not commit to stay and protect a structure if trigger points are reached. ~ Use "Structure Assessment" checklist, IRPG pages 12-16. No safety zones are present, set trigger point to safe retreat. Patrol after passage of the fire front when safe. ~ Follow "HAZMAT on pages 34-36 in IRPG.
DIVS ALL / IA	Chain Saw Operations	<ul style="list-style-type: none"> ~ Follow "Hazard Tree Safety" guidelines, IRPG page 22 ~ Look up, Look down, Look around for hazard tree indicators. ~ Only fell and buck trees within your qualifications, and training. ~ Follow "Procedural Felling Operations" on page 79 in IRPG. ~ Do not fall trees during high wind events. ~ Ensure proper use of all required PPE.
DIVS A / Z / G	Heavy Equipment Operations	<ul style="list-style-type: none"> ~ Ensure communications are established with operators. ~ Use hand signals if other communications are unavailable. ~ Maintain a 100'- 200' exclusion area around equipment and increase it to 1 1/2 times tree height when in timber. ~ Use a spotter when backing.
DIVS ALL / IA	Communications	<ul style="list-style-type: none"> ~ Maintain communication with aviation resources, and suppression organization. ~ Ensure all know frequency and protocol for contacting resources. ~ Utilize the ICS 205. ~ Utilize human repeaters when working in dead spots.

Incident Safety Analysis 215a

DIVS ALL / IA	Wildlife	<ul style="list-style-type: none"> ~ Watch out for wildlife such as alligators, bear, deer, panthers, snakes ~ Do not feed, handle or taunt wildlife ~ Maintain safe distance and avoid contact ~ Discard trash (food and containers) in proper disposal sites ~ Secure pump location sites, watch for alligators, snakes and other wildlife
DIVS ALL / IA	Firefighter & Public Smoke Exposure	<ul style="list-style-type: none"> ~ Identify homes and structures with private parties remaining behind the evacuation. ~ Identify personnel responsible for contacting private parties. ~ Use warning lights and provide traffic control on roadways during smoky and night operations. ~ Rotate crews out of smoky areas during firing and mop-up operations. ~ Contact Communications when firing operations are initiated.
DIVS ALL / IA	ATV/UTV use	<ul style="list-style-type: none"> ~ Ensure equipment is inspected and safe to use. ~ Restrict ATV/UTV use to established trails ~ Ensure operator is trained and certified to operate. ~ Ensure operator has proper PPE according to the Redbook and/or RMA. ~ Question if it is mission critical.
DIVS ALL / IA	Unplanned Public Interaction	<ul style="list-style-type: none"> ~ Be alert to non-fire personnel. ~ All non-fire personnel will be escorted while on fireline. ~ Post lookouts to in areas with public to avoid conflicts with mission tasks. ~ Ensure sufficient security to restrict access to exclusion area.

MEDICAL PLAN (ICS 206)

1. Incident Name: Cowbell Fire		2. Operational Period: Date From: 04-09-17 Date To: 04-09-17 Time From: 0800 Time To: 2000					
3. Medical Aid Stations:							
Name	Location	Contact Number(s)/Frequency	Paramedics on Site?				
Gene-Paul Matson EMTF, MEDL	Medical ICP	434-665-0444	<input checked="" type="checkbox"/> Yes	<input type="checkbox"/> No			
James Fortner EMTF, MEDL T	Medical ICP	202-236-3139	<input type="checkbox"/> Yes	<input checked="" type="checkbox"/> No			
Tracy Milakovic	Firing Group	719-850-0022	<input type="checkbox"/> Yes	<input checked="" type="checkbox"/> No			
Frank Able	Division A	423-595-1578	<input checked="" type="checkbox"/> Yes	<input type="checkbox"/> No			
Jim Stout	Division Z	480-296-1566	<input checked="" type="checkbox"/> Yes	<input type="checkbox"/> No			
Bob Bruington	IA	801-782-3585	<input type="checkbox"/> Yes	<input checked="" type="checkbox"/> No			
Matt Lancaster	Structure Protection Group	303-870-5248	<input type="checkbox"/> Yes	<input checked="" type="checkbox"/> No			
4. Transportation (indicate air or ground):							
Ambulance Service	Location	Contact Number(s)/Frequency	Level of Service				
Collier County EMS (ground)	Everglades City (Medic 61)	911	<input checked="" type="checkbox"/> ALS	<input type="checkbox"/> BLS			
Collier County Med-Flight (air)	Naples Airport	911	<input checked="" type="checkbox"/> ALS	<input type="checkbox"/> BLS			
5HQ Bell 205 (air) medical evacuation	Oasis Heli-base	168.3250 (A/G 85)	<input type="checkbox"/> ALS	<input checked="" type="checkbox"/> BLS			
5. Hospitals:							
Hospital Name	Address	Contact Number(s)	Travel Time		Trauma Center	Burn Center	Helipad
			Air	Ground			
Physicians Regional Collier Blvd	8300 Collier Blvd. Naples, FL 34114 Lat:26°6.313'/Long: -81°41.106'	239-354-6000 (Main) 239-354-6190 (ER)	15	50	<input type="checkbox"/> Yes Level: _____	<input type="checkbox"/> Yes <input checked="" type="checkbox"/> No	<input checked="" type="checkbox"/> Yes <input type="checkbox"/> No
Physicians Regional Pine Ridge	6101 Pine Ridge Road, Naples 34119 Lat:26°12.833'/Long: -81°43.954'	239-348-4000 (Main) 239-304-4748 (ER)	15	50	<input type="checkbox"/> Yes Level: _____	<input type="checkbox"/> Yes <input checked="" type="checkbox"/> No	<input checked="" type="checkbox"/> Yes <input type="checkbox"/> No
Naples Community Hospital	350 7 th Street North, Naples 34102 Lat:26°9.046'/Long: -81°47.907'	239-513-7709 (Main) 239-436-5151 (ER)	15	60	<input checked="" type="checkbox"/> Yes Level: <u>2</u>	<input type="checkbox"/> Yes <input checked="" type="checkbox"/> No	<input checked="" type="checkbox"/> Yes <input type="checkbox"/> No
Jackson Memorial Hospital	1611 NW 12 Avenue, Miami Lat:25°47.508'/Long: -80°12.756'	305-585-1111 (Main) 305-585-6910 (ER)	20	60	<input checked="" type="checkbox"/> Yes Level: <u>1</u>	<input checked="" type="checkbox"/> Yes <input type="checkbox"/> No	<input checked="" type="checkbox"/> Yes <input type="checkbox"/> No
Kendal Regional Medical Center	11750 SW 40 th St., Miami 33175 Lat:25°43.916'/Long: -80°23.148'	305-223-3000 (Main) 305-227-5544 (ER)	20	50	<input checked="" type="checkbox"/> Yes Level: <u>1</u>	<input type="checkbox"/> Yes <input checked="" type="checkbox"/> No	<input checked="" type="checkbox"/> Yes <input type="checkbox"/> No
6. Special Medical Emergency Procedures: <ul style="list-style-type: none"> • Patient or nearest responder notifies Group Supervisor who will respond to the scene and become the "incident within an incident" (IWI) commander. • Group Supervisor will notify nearest medical responder and ICP-Communications of the incident and "Nine Line" report attached to the back of this IAP or page 108 of the IRPG. <p>Call "784" (Emergency & Law Enforcement) Everglades Communications on the Oasis or Carns Repeater, or by phone at 1-800-788-0511 if it is determined that a pre-hospital medevac care, air hoist capability or snake bite treatment is required. MedFlight located at Naples Municipal Airport will be used for pre-hospital medevac care. Miami-Dade Fire Rescue (MDFR) Air Rescue Bureau will be used for air hoist rescue and also for snake bite treatment. Everglades Communications will advise the 911 dispatcher for Collier or Dade County for their helicopter to communicate through the Incident's Air/Ground frequency.</p> <p>Note: If possible, give coordinates in aviation format – Degrees, Decimal, Minutes</p> <p><input type="checkbox"/> Check box if aviation assets are utilized for rescue. If assets are used, coordinate with Air Operations.</p>							
7. Prepared by (Medical Unit Leader): Name: <u>Gene-Paul Matson/James P. Fortner(T)</u> Signature: <u>/s/ James P. Fortner</u>							
8. Approved by (Safety Officer): Name: <u>Ken Gordon</u> Signature: <u>/s/ Kenneth R. Gordon</u>							
ICS 206		IAP Page _____		Date/Time: <u>04/08/2017</u>			

INCIDENT RADIO COMMUNICATIONS PLAN (ICS 205)

3. Operational Period: DAY									
Date/Time From: 04/09/2017 0800		Date/Time To: 04/09/2017 2000							
Zone Group	Ch #	Function	Assignment	RX Freq	RX Tone/NAC	TX Freq	TX Tone/NAC	Mode (A,D, or M)	Remarks
	1	CARNS RPT	Initial Attack	172.4250	1035	170.1000	1035	D	Talk Group 1
	2	OASIS RPT	Initial Attack	172.4250	1035	171.6250	1035	D	Talk Group 1
	3	BCY LCL		166.7750	No Tone	166.7750	No Tone	A	
	4	BICY TAC 1	Division A Firing Group	168.6000	No Tone	168.6000	No Tone	A	
	5	BICY LCL 2	DIVISION G	168.2500	No Tone	168.2500	No Tone	A	
	6	A/G 59	Initial Attack	169.1125	No Tone	169.1125	No Tone	A	
	7	Panther RPT	Initial Attack	164.6250	1188	163.1500	1188	D	Talk Group 1
	8	PANTHER TAC 1	DIVISION Z	166.7500	No Tone	166.7500	No Tone	A	
	9	PANTHER TAC 2	Initial Attack	166.8250	No Tone	166.8250	No Tone	A	
	10	A/G 85	ALL DIVISIONS	168.3250	No Tone	168.3250	No Tone	A	
	11	Everglades TAC 1	Structure Protection / Parliament Misc.	166.7250	0659	166.7250	0659	D	
	12	CMD 12	DIVISION A/Z Structure/Firing Group	166.6125	No Tone	168.4000	110.9	A	
	13	CMD 13	DIVISION G Structure/Firing Group	168.7000	No Tone	170.9750	110.9	A	
	14	A/G	ALL DIVISIONS	167.9500	No Tone	167.9500	No Tone	A	
	15	BCYFLTRP	ALL DIVISIONS	169.7250	1514	163.3875	1738	D	
	16	AIR GUARD		168.6250	No Tone	168.6250	110.9	A	
Name: GEORGE ROSENTHAL				Signature: /s/ George Rosenthal					
				Date/Time: 04/08/2017 1700					

Recycling Guidelines

What is Allowed	What is not Allowed
Plastic #1 through #7, aluminum, and steel cans	Window glass, ceramics, light bulbs
Clear, Brown, and Green Glass	Automotive fluids, paint, cleaning products
Cardboard	Batteries
Paper, magazines, phone books	No food contaminated paper
<ul style="list-style-type: none">• Break down all cardboard boxes• Empty all liquids and food products	

TRAINING

APRIL 9

Incident training unit purpose and roles – part 2

Friday's message was about paper production; today's outlines a few of the more qualitative and enjoyable roles (for the TNSP, at least) of formal incident training.

First of all, the fact that there is even a place at the ICP set aside for "TRAINING" and a person called the "INCIDENT TRAINING SPECIALIST" who occupies the spot, helps bring structure to the assignment and the trainee/trainer relationship by formalizing expectations and responsibilities. In other words, there are goals and objectives to achieve over the course of the assignment. That's good because training happens, performance is measured, and progress toward qualification is more likely to be accomplished.

The enjoyable part of the job for the TNSP includes helping folks navigate the Incident Qualification and Certification System and providing answers to some questions, for example –

What jobs are out there and how are they organized in an Incident Command System structure?

How does a person become qualified in a particular position? What formal courses do I need to take? What are the prerequisite positions? What other training and certifications are there which may help move me along more quickly?

This is the fun stuff because TNSPs get to meet with people one-on-one and have actual conversations about meaningful subjects. So keep on coming around.

"They may forget what you said, but they will never forget how you made them feel." - Carl W. Buechner

John Davis, Training Specialist



To: All Incident Personnel, Cowbell Fire

As Southern Area Type II Incident Commander, I am committed to a policy of “zero tolerance” of inappropriate behavior during incident operations. Any form of harassment, discriminatory practices, or disrespectful behavior will not be tolerated. Known or reported acts will be dealt with appropriately.

I am particularly concerned about the perception that alcohol has a place in any of the Incident facilities. It is not appropriate to indulge in alcoholic beverages during any fire assignment.

The Teams from the Southern Region have a team expectation of “NO ALCOHOL” from the time of dispatch until the time of physical release from the Incident. Members of the Team voluntarily comply with this expectation; all incident personnel will be expected to do so also.

We endorse, support, and expect an attitude of mutual respect for all Incident personnel and the public we serve. We also, endorse the attitude and work ethic that places “Safety First, every time on every Incident.” We expect nothing less.

/s/ Steve Parrish
Incident Commander
Southern Area Gold Team



Southern Area Incident Management Gold Team Fire Information

LOST & FOUND

Information has set up a Lost and Found box in the PIO/IC trailer. If you're missing something, please come see us. Also, if you find something, please give it to a PIO and we'll put it in the box.

For the latest information, videos, photos and other news on the Cowbell and Parliament Fires, follow us on social media:



InciWeb <https://inciweb.nwcg.gov/unit/2296>



Twitter <https://twitter.com/BigCypressNPS>



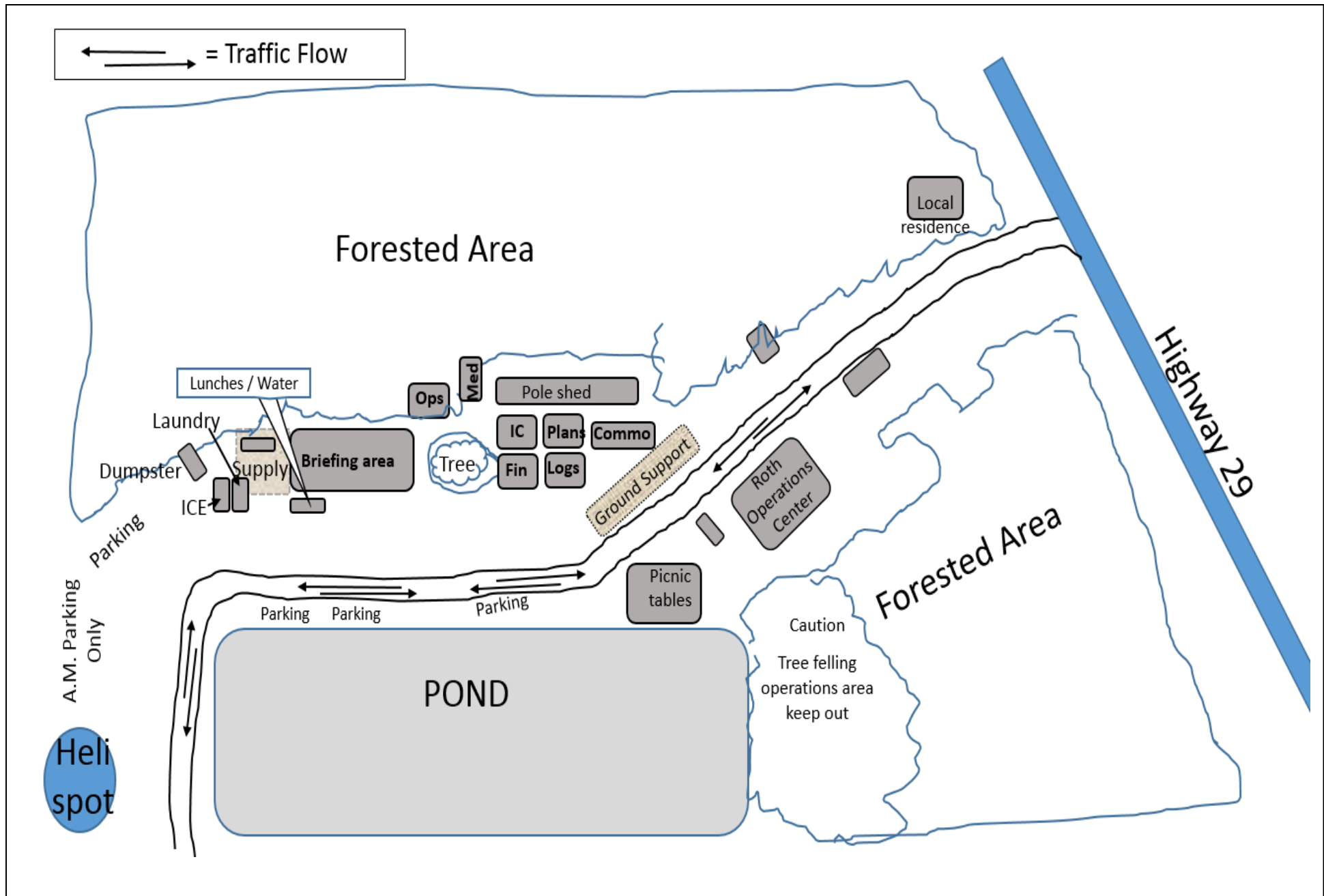
Facebook <https://www.facebook.com/BigCypressNPS>

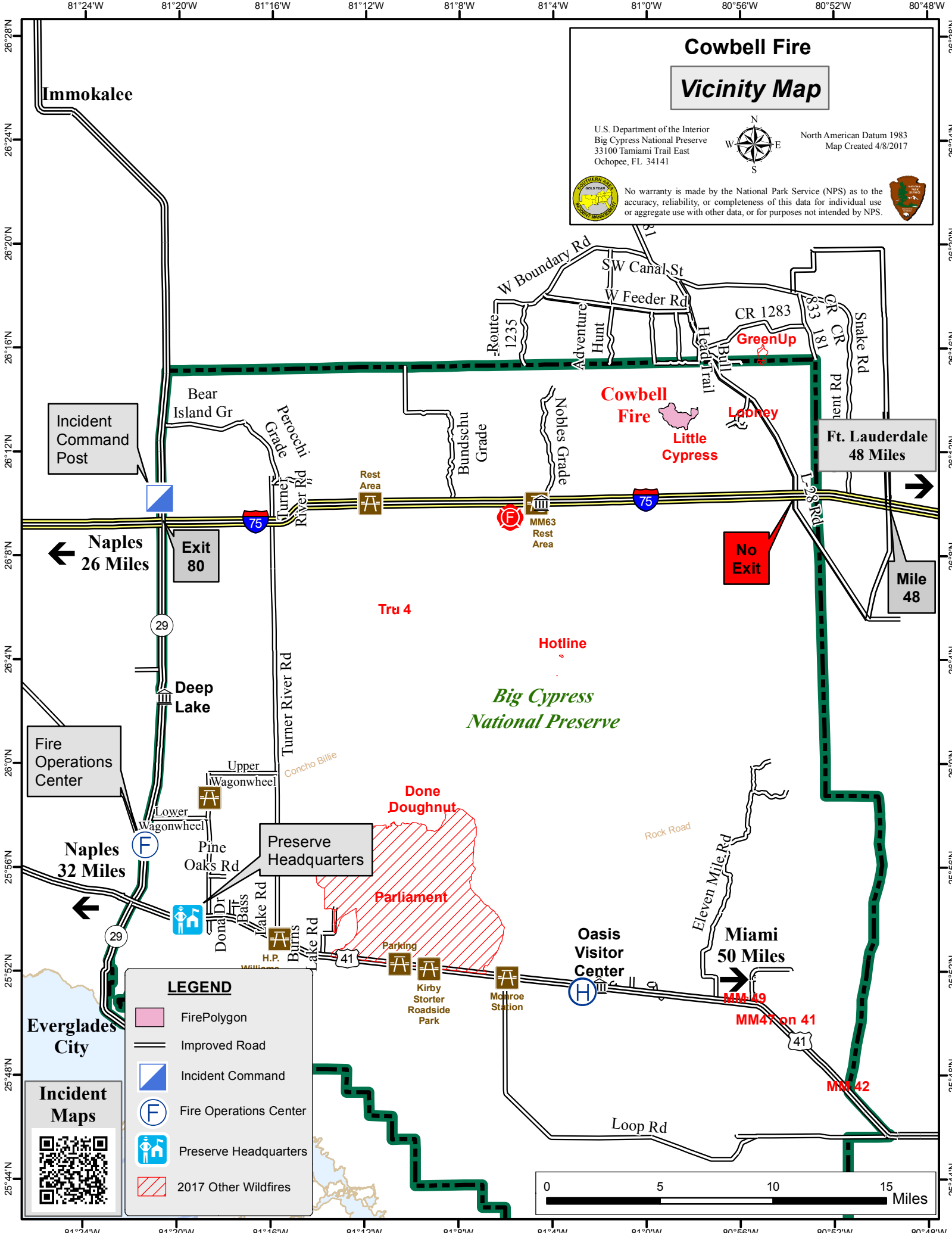
You can also call us 8 a.m. - 8 p.m. at 305-204-6659 or email us at BICYfireinfo@gmail.com. For general information about the Big Cypress National Preserve, visit <https://www.nps.gov/bicy> or call 239-695-1107.

WE WANT YOUR PICTURES AND VIDEOS!

Please find a PIO after morning briefing and AirDrop us your videos and pictures or email them to us at BICYfireinfo@gmail.com.

Base Camp Map





Cowbell Fire Vicinity Map

U.S. Department of the Interior
Big Cypress National Preserve
33100 Tamiami Trail East
Ochopee, FL 34141

North American Datum 1983
Map Created 4/8/2017



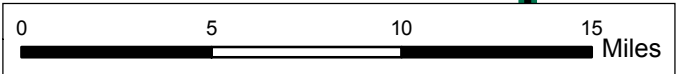
No warranty is made by the National Park Service (NPS) as to the accuracy, reliability, or completeness of this data for individual use or aggregate use with other data, or for purposes not intended by NPS.

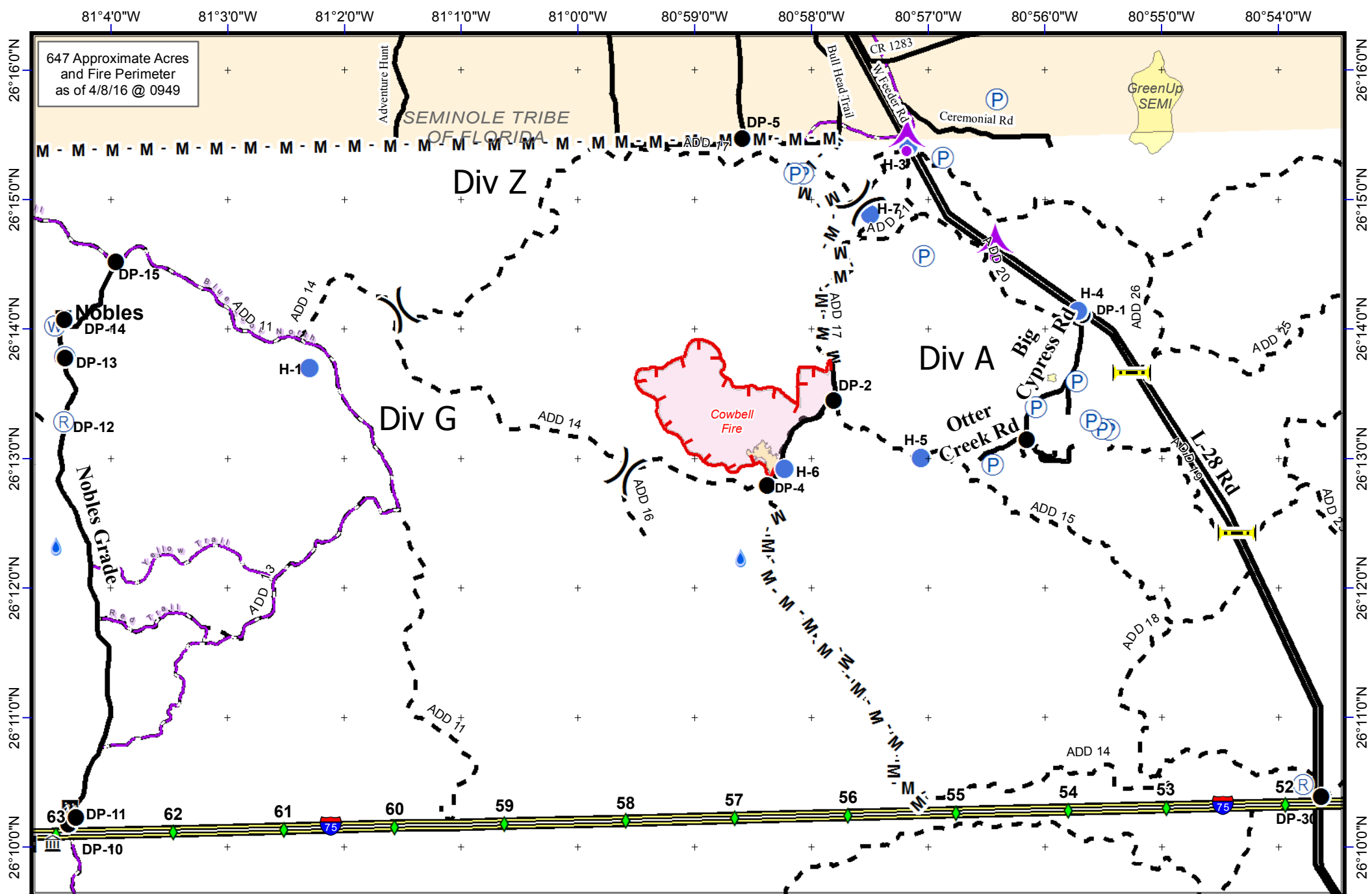


LEGEND

- FirePolygon
- Improved Road
- Incident Command
- Fire Operations Center
- Preserve Headquarters
- 2017 Other Wildfires

Incident Maps





Cowbell Fire
FL-BCP-017033

IAP Map
April 9, 2017
Day Shift



Legend

- Uncontrolled Fire Edge
- Completed Line
- M - M Mastication Line

- Pump
- Drop Point
- Helispot
- Division

- Repeater
- Aerial Hazard
- Private Structures
- NPS Property

- Bridge Locations
- I - 75
- Improved Road
- Primary Buggy Trail



NAD 83 UTM 17
0 0.5 1
Miles



PHONE LIST - COWBELL FIRE

Position	Name	Phone Number	Position	Name	Phone Number
COMMAND			PLANNING		
Incident Commander	Steve Parrish	850-567-9507	Chief	Dave Berens	601-319-6823
Incident Commander (t)	Lance Elmore	501-520-7276	Chief	Steve Moore	803-360-6956
Deputy Incident Commander	Marty Bentley	423-584-1682	Resource Unit Leader	Melonie Sellers	601-508-8997
Deputy Incident Commander (t)	Debbie Beard	850-524-9966	Resource Unit Leader	Carol O'Bryan	903-263-8704
Liaison Officer	Mike Wright	970-819-2890	Resource Unit Leader (t)	Jessica Hollingsworth	540-383-6531
Public Information	Susie Heisey	912-286-3110	Situation Unit Leader	Jeff DeMatteis	601-415-9080
Public Information	Michelle Burnett	803-920-6167	Fire Behavior Analyst	Gary Jarvis	251-288-1084
Public Information	Susan Blake	850-509-9952	Fire Behavior Analyst (t)	Kelly Cagle	336-302-0343
Public Information (t)	Donald Simon	910-975-1895	Fire Behavior Analyst (t)	Brenda Dale	906-280-3398
Safety Officer	Buddy Kelly	850-447-1344	Air Resource Advisor	Andrea Holland	970-274-0010
Safety Officer	Mark Sullivan	205-531-7183	READ	Phil Wilson	406-871-1907
Safety Officer (t)	Ken Gordon	850-688-4474	READ	Wylie Paxton	828-222-4440
Acting FMO	Byron Hart	850-264-9567	IMET	John Pendergrast	240-499-6649
			GISS	Chris Evans	928-273-4203
OPERATIONS			GISS	Melanie Hans	618-315-5404
Planning Ops	Steve Weaver	828-360-2476	GISS (t)	Jeff Adams	361-205-4744
Planning Ops (t)	Paul Varnedoe	423-650-2184	Demob	Thomas Barrett	478-550-6372
Field Ops	Greg Brooks	828-421-5025	Check In	Jeff Turner	865-684-0095
Field Ops (t)	Mike Davis	936-219-7743	Training Specialist	John Davis	231-878-0074
Division A	Chad Cook	828-360-4985	Compter Tech	Jerry Dronberger	479-747-7020
Division A (t)	Heath Thomas	501-208-7077	Compter Tech	Rusty Brown	478-973-6231
Division G	E.J. Bunzendahl	859-556-2347	Compter Tech (t)	Nikita Carty	305-878-997
Division Z	Tom Crews	252-216-6361	LOGISTICS		
Division Initial Attack	Kris Croddy	520-275-6747	Chief	Willie Boston	770-328-3186
Division Parliament	UNSTAFFED		Chief (t)	Tom Phillips	936-635-7154
Structure Protection Group	Ryan Vice	979-215-1936	Deputy	Jerry Jussila	218-235-8983
Firing Group	Mary Owen	601-917-2860	Deputy	Susan Cornett	903-930-5321
AIR OPERATIONS			Supply Unit	Tom Piper	727-514-5513
Air Operation Branch Director	Mike Rock	606-813-9750	Facilities Unit	Glen Bee	208-847-5507
Air Support Group Supervisor	Pete Kubiak	404-661-4819	Ground Support Unit Leader	Michael Howarth	936-414-2697
FINANACE			Ordering Manager	Sherri Kite	850-209-2150
Chief	Wanda Kelley	423-584-1472	Receiving & Distribution	Chris Combs	727-992-0046
Chief (t)	Holly Cyprian	928-919-3027	Base Camp Manager	Mike Justus	
Time Unit Leader	Laura Wilson	765-427-7564	Communications	George Rosenthal	936-707-1832
Time Unit Leader (t)	Sherise Foster	919-943-7843	Communications	Ron Regan	828-772-8514
Comp/Claims	Terri McDonald	352-454-5385	Comms Trailer		772-631-2573
Equipment Time Recorder (t)	Donna Line	706-474-3216	Medical Unit Leader	Gene-Paul Matson	434-665-0444
Personel Time Recorder	Sherise Foster	919-943-7843	Medical Unit Leader (t)	James Fortner	202-236-3139
Personnel Time Recorder (t)	Gustavo Vallejo	423-457-7403	Security Mananger	Sasha Herrin	239-300-5755
			Security Mananger (t)	RJ Seehase	414-739-5696

Medical Incident Report- "9 Line"

FOR ALL MEDICAL EMERGENCIES: IDENTIFY ON SCENE INCIDENT COMMANDER BY NAME AND POSITION AND ANNOUNCE "MEDICAL EMERGENCY" TO INITIATE RESPONSE FROM IMT COMMUNICATIONS/DISPATCH.

Use items one through nine to communicate situation to communications/dispatch.

1. CONTACT COMMUNICATIONS/DISPATCH - Comms Trailer Phone (772-631-2573)

Radio Call Sign "784" for Life Threatening Emergencies on the Oasis or Carns repeater or by phone at 1-800-788-0511

Ex: "Communications, Div. Alpha. Stand-by for Priority Medical Incident Report." (If life threatening request designated frequency be cleared for emergency traffic.)

2. INCIDENT STATUS: Provide incident summary and command structure.

Nature of Injury/Illness		Describe the injury (Ex: Broken leg with bleeding)
Incident Name		Geographic Name + "Medical" (Ex: Trout Meadow Medical)
Incident Commander		Name of IC
Patient Care		Name of Care Provider (Ex: EMT Smith)

3. INITIAL PATIENT ASSESSMENT: Complete this section for each patient. This is only a brief, initial assessment. Provide additional patient info after completing this 9 Line Report.

Number of Patients:	Male / Female	Age:	Weight:
Conscious? <input type="checkbox"/> YES	<input type="checkbox"/> NO = MEDEVAC!		
Breathing? <input type="checkbox"/> YES	<input type="checkbox"/> NO = MEDEVAC!		
Mechanism of Injury: What caused the injury?			
Lat/Long (Datum NAD83)			

4. SEVERITY OF EMERGENCY, TRANSPORT PRIORITY

SEVERITY	TRANSPORT PRIORITY
<input type="checkbox"/> URGENT-RED Life threatening injury or illness. Ex: Unconscious, difficulty breathing, bleeding severely, 2° – 3° burns more than 4 palm sizes, heat stroke, disoriented.	Ambulance or MEDEVAC helicopter. Evacuation need is IMMEDIATE.
<input type="checkbox"/> PRIORITY-YELLOW Serious Injury or illness. Ex: Significant trauma, not able to walk, 2° – 3° burns not more than 1-2 palm sizes.	Ambulance or consider air transport if at remote location. Evacuation may be DELAYED.
<input type="checkbox"/> ROUTINE-GREEN Not a life threatening injury or illness. Ex: Sprains, strains, minor heat-related illness.	Non-Emergency. Evacuation considered Routine of Convenience.

5. TRANSPORT PLAN:

Air Transport: (Agency Aircraft Preferred)

<input type="checkbox"/> Helispot	<input type="checkbox"/> Short-haul/Hoist	<input type="checkbox"/> Life Flight	<input type="checkbox"/> Other
Ground Transport:			
<input type="checkbox"/> Self-Extract	<input type="checkbox"/> Carry-Out	<input type="checkbox"/> Ambulance	<input type="checkbox"/> Other

6. ADDITIONAL RESOURCE/EQUIPMENT NEEDS:

<input type="checkbox"/> Paramedic/EMT(s)	<input type="checkbox"/> Crew(s)	<input type="checkbox"/> SKED/Backboard/C-Collar
<input type="checkbox"/> Burn Sheet(s)	<input type="checkbox"/> Oxygen	<input type="checkbox"/> Trauma Bag
<input type="checkbox"/> Medication(s)	<input type="checkbox"/> IV/Fluid(s)	<input type="checkbox"/> Cardiac Monitor/AED
<input type="checkbox"/> Other (i.e. splints, rope rescue, wheeled litter)		

7. COMMUNICATIONS:

Function	Channel Name/Number	Receive (Rx)	Tone/NAC *	Transmit (Tx)	Tone/NAC *
COMMAND	CARNS Rpt Channel 1	172.4250	1035	170.1000	1035
COMMAND	OASIS Rpt Channel 2	172.4250	1035	171.6250	1035
COMMAND	CMD Channel 12	166.6125	No Tone	168.4000	110.9
AIR-TO-GRND	AG/85 Channel 10	168.3250	No Tone	168.3250	No Tone
TACTICAL					

*(NAC for digital radio system)

8. EVACUATION LOCATION:

Lat/Long (Datum NAD83) EX: N 40 42.45' x W 123 03.24'	
Patient's ETA to Evacuation Location:	
Helispot/Extraction Size and Hazards:	

9. CONTINGENCY:

Considerations: If primary options fail, what actions can be implemented in conjunction with primary evacuation method? Be thinking ahead...

REMEMBER: Confirm ETA's of resources ordered
Act according to your level of training
Be Alert. Keep Calm. Think Clearly. Act Decisively.