

# Incident Action Plan



Day Operational Period

Monday

4/3/17

0800-2000

**Cowbell Fire**

FL-BCP-017033

PPKX14

INCIDENT OBJECTIVES	1. Incident Name <b>Cowbell Fire</b>	2. Date Prepared <b>4/2/17</b>	3. Time Prepared <b>1700</b>
4. Operational Period <b>4/3/17 0800 - 2000</b>			
5. General Control Objectives For The Incident <u>Objectives for the Incident:</u> <ul style="list-style-type: none"> <li>• Protection of human life is top priority through the use of sound risk management decisions.</li> <li>• Protect private property and infrastructure, federal facilities, critical transportation corridors, recreational and cultural resource values, T&amp;E species and their habitat (e.g. Florida Panther, Florida bonneted bat, Red-Cockaded Woodpecker), and wilderness values through coordination with READS and following MIST Tactics on current and all initial and extended attack fires.</li> <li>• Provide opportunities to communicate and educate the public on the role of fire in the BCP and FPR ecosystems through social media and other outlets.</li> <li>• Provide training opportunities for Preserve, State, and local federal fire agency personnel to actively enhance successional planning of future firefighting personnel.</li> <li>• Provide initial attack for Big Cypress National Preserve and Florida Panther Refuge.</li> </ul>			
<u>Control Objectives:</u> <ul style="list-style-type: none"> <li>• Keep fire west of trail ADD 17 and south of the Big Cypress National Preserve's northern boundary to minimize impacts to high values including Seminole and Miccosukee tribal lands, Sanctuary community, and private land within and near to the boundaries of the Big Cypress National Preserve and Florida Panther Wildlife Refuge.</li> <li>• Minimize smoke impacts on I-75, State Road 29 and 41 in order to avoid safety threats to the public.</li> <li>• Utilize full suppression strategies and tactics that commit responders only to operations where and when they can be successful and under conditions where important values actually at risk are protected with the least exposure necessary while sustaining relationships with the people we serve.</li> </ul>			
6. Weather forecast for Period  High pressure east of Florida will move farther away from the area early this week. Light southeast to south winds will increase by late afternoon due to heating and sea breeze development. One or two weak frontal boundaries will move into north Florida and stall north of the area into midweek. Isolated afternoon storms will be possible with a better rain chance developing around Thursday due to a stronger front approaching the area.			
7. General Safety Message  Look up, look down, look all around for hazards, recognize them and mitigate them.			
8. ATTACHMENTS (X IF ATTACHED) <input checked="" type="checkbox"/> Organization List - ICS 203 <input checked="" type="checkbox"/> Medical Plan - ICS 206    [ ] _____ <input checked="" type="checkbox"/> Division Assignment Lists - ICS 204 <input checked="" type="checkbox"/> Incident Map                      [ ] _____ <input checked="" type="checkbox"/> Communications Plan - ICS 205                      [ ] Traffic Plan                      [ ] _____			
9. Prepared By (Planning Section Chief)  <b>/s/ Dave Berens / Steve Moore</b>		10. Approved By (Incident Commander)  <b>/s/ Steve Parrish</b>	

ORGANIZATION ASSIGNMENT LIST		9.	Operations Section
1. Incident Name <b>COWBELL FIRE</b>		Planning Operations	Steve Weaver, Paul Varnedoe (t)
		Field Operations	Greg Brooks, Mike Davis (t)
2. Date 04/02/17	3. Time 1700		
4. Operational Period 04/03/17 DAY (0800 – 2000)		<b>a.</b>	<b>Divisions/Groups</b>
<b>5. Incident Commander and Staff</b>		Division	A Chad Cooke, Heath Thomas (t)
		Division	G E.J. Bunzendahl
		Division	Z Tom Crews
		Division	Initial Attack Kelly Cagle
		Division	Parliament & Misc Fires UNSTAFFED
Liaison Officer	Mike Wright	Group	Structure Protection Ryan Vice
Safety Officer	Buddy Kelley, Mark Sullivan, Ken Gordon (t)	Group	Firing Mary Owen
Information Officer	Susie Heisey, Michelle Burnett, Donald Simon (t)		
<b>6. Agency Reps</b>			
Agency Administrator	J.D. Lee (Big Cypress)		
Chief of Fire & Aviation	Jordan McKnight (Big Cypress)		
Zone FMO	Cass Palmer (Panther)		
Collier Co. Sheriff	Lt. Jake Walker		
Dade Co. Sheriff	Mike Preston		
		<b>b.</b>	<b>Air Operations Branch</b>
		Air Operation Branch Director	Mike Rock
		Air Support Group Supervisor	Pete Kubiak
		Air Tactical Group Supervisor	Ken McLaughlin
<b>7. Planning Section</b>		Helibase Manager	Denise Coker
Chief	Dave Berens, Steve Moore		
Resources Unit	Melone Sellers, Carol O'Bryan, Jessica Hollingsworth (t)		
Situation Unit	Jeff DeMatteis		
FBAN	Gary Jarvis	<b>8. Logistics Section</b>	
IMET	John Pendergrast	Chief	Willie Boston
Geo. Info. Spec.	Chris Evans, Melanie Hans, Jeff Adams (t)	Deputy	Jerry Jussila
Demob Unit	Thomas Barrett	Supply Unit	Tom Piper
Status Check-In	Jeff Turner, Tonia Johnson (t)	Facilities Unit	Tom Phillips
Training	John Davis	Ground Support	Michael Howarth/Peter Lashoto
ITSS	Jerry Dronberger, Rusty Brown	Equipment Manager	
		Ordering Manager	Sherri Kite
<b>10. Finance Section</b>		Receiving & Distrib. Mgr.	Chris Combs
Chief	Wanda Kelley, Holly Cyprian (t)	Base Camp Manager	Mike Justus
Time Unit	Laura Wilson, Sherise Foster (t)	Communications Unit	George Rosenthal, Ron Regan
Equipment Time Unit	Donna Line (t)	Incident Communication Mgr.	
Cost Unit	Carolyn Hughes	Comm Tech	
Comp/Claims	Terri McDonald	Rado	
Procurement	Leslie Solberg	Medical Unit Leader	Gene-Paul Matson, James Fortner (t)
Personnel Time Recorder	Gustavo Vallejo (t)	Security	Sasha Herrin
Prepared by (RESL) /s/ Carol O'Bryan / Melonie Sellers / Jessica Hollingsworth			



# Fire Weather Forecast

FORECAST NO: 1  
 PREDICTION FOR: Monday Day Shift  
 SHIFT DATE: April 3, 2017  
 FORECAST ISSUED: 1900 April 2, 2017

NAME OF FIRE: Cowbell Fire  
 UNIT: Big Cypress National Preserve  
 Incident Meteorologist: *John Pendergrast*  
 240-499-6649

**DISCUSSION:** High pressure east of Florida will move farther away from the area early this week. Light southeast to south winds will increase by late afternoon due to heating and sea breeze development. One or two weak frontal boundaries will move into north Florida and stall north of the area into midweek. Isolated afternoon storms will be possible with a better rain chance developing around Thursday due to a stronger front approaching the area.

## TODAY (MONDAY DAY SHIFT):

WEATHER: Partly cloudy and warm. Isolated afternoon thunderstorms.  
 WIND (20 FT): Southeast 4 to 7 mph in the morning increasing to 10 to 15 mph in the afternoon.  
 MAX TEMPERATURES: 89 to 91. Heat Indices 92 to 94.  
 MIN RH: 48%.  
 LAL: 2                      Chance measurable rain: 20% (rain amounts a tenth an inch or less.)  
 DISPERSION: 52 MAX      MIXING HEIGHT 5000      TRANSPORT WINDS: Southeast 16 to 20 mph in afternoon

## TONIGHT (MONDAY NIGHT):

WEATHER: Partly cloudy with isolated showers early. Some patchy fog in low spots toward daybreak.  
 WIND (20 FT): South 2 to 4 mph.  
 MIN TEMPERATURES: 67 TO 70F.  
 MAX RH: 94 to 98%. LVORI 7 (max)  
 LAL: 1      Chance measurable rain: less than 20% early.

## TUESDAY:

WEATHER: Partly cloudy and warm. Isolated afternoon and evening thunderstorms.  
 WIND (20 FT): Southwest winds 4 to 6 mph increasing to 10 mph in the afternoon.  
 MAX TEMPERATURES: 89 to 92F. Heat Indices 92 to 94.  
 MIN RH: 45%.  
 LAL: 2                      Chance measurable rain: 20% (rain amounts up to a tenth of an inch in affected areas).  
 DISPERSION: 46 MAX      MIXING HEIGHT 5000      TRANSPORT WINDS Southwest 12 mph in afternoon.

**GENERAL OUTLOOK WEDNESDAY THROUGH FRIDAY:** Weakening high pressure north of the area Friday will bring a better setup for sea breeze activity and inland collisions Wednesday. A cool front is forecast to sweep through the area on Thursday bringing dryer conditions with NW winds into Friday.

WEATHER: Partly cloudy. 30 percent chance of storms Wednesday and 50 percent Thursday.  
 WIND (20 FT): South winds 10 mph Wednesday becoming Southwest Thursday, becoming NW 10 to 15 mph after the front on Thursday.  
 MIN TEMPERATURES: 68 to 71. Cooling to 60 to 66 on Thursday night.  
 MAX TEMPERATURES: 88 to 91 Wed and 84 to 88 Thursday and Friday.  
 MIN RH: 47 to 52 percent Wed/Thu. 40 to 45 percent Friday.  
 MAX RH: 95 to 100%. RH Trend similar.



Current Incident  
 area RAWs  
 conditions

Sunrise Mon: 7:15am  
 Sunset Mon: 7:43pm  
 Moon First Qtr: 2:41pm

Source: US Naval Observatory

# FIRE BEHAVIOR FORECAST

FORECAST NUMBER: 01	TYPE OF FIRE: Wildland Fire
FIRE NAME: Cowbell	OPERATIONAL PERIOD: Monday April 3, 2017
DATE ISSUED: April 2 <sup>nd</sup> , 2017	TIME ISSUED: 2000
UNIT: Big Cypress National Preserve	SIGNED: GaryWJarvis Gary Jarvis FBAN

## INPUTS

### WEATHER SUMMARY:

WEATHER: Partly cloudy and warm. Isolated afternoon thunderstorms.  
WIND (20 FT): Southeast 4 to 7 mph in the morning increasing to 10 to 15 mph in the afternoon.  
MAX TEMPERATURES: 89 to 91 MIN RH: 48%.  
LAL: 2 Chance measurable rain: 20% (rain amounts a tenth an inch or less.)  
DISPERSION: 52 MAX MIXING HEIGHT 5000 TRANSPORT WINDS: Southeast 16 to 20 mph in afternoon

## OUTPUTS

### FIRE BEHAVIOR

#### GENERAL:

Primary fuels consist of grass (GR4,GR5), southern rough (SH8) and timber litter (TL8). Current fuel conditions are favorable for very active fire behavior within the grass and shrub fuels. The current drought conditions have led to both live and dead fuel moistures to reach areas of concern. Expect all fuels to burn readily, including those that appear green.

#### Expected Fire Behavior:

**Grass** – ROS 19-46 ch/hr with flame lengths 6-8 ft. **Timber Understory/Shrub** – ROS 13-25 ch/hr with flame lengths 8-11 ft  
**Probability of Ignition:** 45% with no shading **Calculated 1 hour fuel moisture:** 8-10%  
**Forecasted 10 hour fuel moisture:** 10-12% **Forecasted 100 hour fuel moisture:** 13-15%  
**Estimated Live Fuel Moistures:** **Herbaceous:** 75% **Woody:** 100%

**Local Thresholds:** Eye Level winds over 10 mph, RH below 50% and a Dispersion Index above 60

*If thunderstorms develop, fuels affected by gusty outflow winds may produce erratic fire behavior. Rates of spread and flames lengths listed above can easily double!!*

#### SPECIFIC:

**Cowbell Fire** - The fire will continue to move in a northerly direction due to SE wind direction. Expect more fire activity today due to increased wind speed and higher dispersion index than yesterday.

**Initial Attack:** Moderate to heavy resistance can be expected on any new starts in the grass/brush fuels. Expect rapid rates of spread, especially in the grass models and anticipate some spotting to challenge your control efforts.

**AIR OPERATIONS:** If the predicted thunderstorms develop this afternoon, gusty outflow winds may hamper or limit air resources.

## SAFETY

Thunderstorms can cause significant hazards for wildland firefighters, including downburst that can cause extreme fire behavior and lightning. When thunderstorm development is likely, lookouts should be posted and aware of the signs of a developing storm

## Division/Group Assignment List (ICS 204 WF)

<b>1. Incident Name:</b>		<b>3.</b>				
Cowbell Fire		Branch:		Division/Group		
<b>2. Operational Period:</b>				<b>A</b>		
Date/Time From: 04/03/17 0800	Date/Time To: 04/03/17 2000					
<b>4. Operations Personnel</b>						
AIR ATTACK SUPERVISOR			FIELD OPERATIONS		Greg Brooks/Mike Davis (t)	
DIVISION/GROUP SUPERVISOR	Chad Cook Heath Thomas (t)		PLANNING OPERATIONS		Steve Weaver Paul Varnedoe (t)	
<b>5. Resources Assigned this Period</b>						
Strike Team / Task Force / Resource Designator	LWD	Leader	Number Persons	Drop Off PT./Time	Pick Up PT./Time	
Duece Buggy IA		Lucas Hunkler	2			
Slimmer Buggy IA		April Deming	3			
Seminole Buggy IA		Mike Lightsey	2			
Panther Buggy IA		Justin Phippen	1			
EMTF		Tracy Milakovic	1			
SOFR		Joe Fowler	1			
<b>6. Control Operations/Work Assignments:</b>						
<b>Task:</b>						
<ul style="list-style-type: none"> <li>Anchor suppression work at fire perimeter on ADD 17/14 intersection</li> <li>Patrol and conduct mop up, as appropriate</li> <li>Coordinate with firing group to conduct strategic firing operations northerly along ADD 17 to minimize fire impacts</li> <li>Coordinate with Div Z on triage of hunt camps for point protection</li> </ul>						
<b>Purpose:</b>						
<ul style="list-style-type: none"> <li>To keep fire confined and contained north and east of ADD 17</li> <li>To protect hunt camp structures</li> </ul>						
<b>End State:</b>						
<ul style="list-style-type: none"> <li>Control fire perimeter north and west of ADD 17 to eliminate threat to sanctuary area structures</li> </ul>						
<b>7. Special Instructions:</b>						
<b>8. Division/Group Communication Summary</b>						
Function	Channel	RX Frequency N/W	RXTone/NAC	TX Frequency N/W	TX Tone/NAC	Mode
COMMAND	7	164.6250	118.8	163.1500	118.8	D
TACTICAL	4	168.6000		166.6000		A
AIR TO GROUND	10	168.3250		168.3250		A
<b>9. Prepared By (Resource Unit Leader)</b>		<b>Approved By (Planning Section Chief)</b>			<b>Date</b>	<b>Time</b>
/s/ Melonie Sellers/Carol O'Bryan		Dave Berens/Steve Moore			04/02/17	13:00

### Division/Group Assignment List (ICS 204 WF)

<b>1. Incident Name:</b>		<b>3.</b>				
Cowbell Fire		<b>Branch:</b>	<b>Division/Group</b>			
<b>2. Operational Period:</b>			<b>G</b>			
Date/Time From: 04/03/17 0800	Date/Time To: 04/03/17 2000					
<b>4. Operations Personnel</b>						
AIR ATTACK SUPERVISOR			FIELD OPERATIONS Greg Brooks/Mike Davis (t)			
DIVISION/GROUP SUPERVISOR	E.J. Bunzendahl		PLANNING OPERATIONS Steve Weaver Paul Varnedoe (t)			
<b>5. Resources Assigned this Period</b>						
Strike Team / Task Force / Resource Designator	LWD	Leader	Number Persons	Drop Off PT./Time	Pick Up PT./Time	
unstaffed						
<b>6. Control Operations/Work Assignments:</b>						
<b>Task:</b>						
<ul style="list-style-type: none"> <li>Assess presuppression work on DIV G</li> </ul>						
<b>Purpose:</b>						
<ul style="list-style-type: none"> <li>To keep fire contained south and west of ADD 17 and ADD 14</li> </ul>						
<b>End State:</b>						
<ul style="list-style-type: none"> <li>Confine fire perimeter north and west to reduce threats to resource values at risk</li> </ul>						
<b>7. Special Instructions:</b>						
<b>8. Division/Group Communication Summary</b>						
Function	Channel	RX Frequency N/W	RXTone/NAC	TX Frequency N/W	TX Tone/NAC	Mode
COMMAND	7	164.6250	118.8	163.1500	118.8	D
TACTICAL	5	168.2500		168.2500		A
AIR TO GROUND	10	168.3250		168.3250		A
<b>9. Prepared By (Resource Unit Leader)</b>		<b>Approved By (Planning Section Chief)</b>		<b>Date</b>	<b>Time</b>	
/s/ Melonie Sellers/Carol O'Bryan		Dave Berens/Steve Moore		04/02/17	13:00	

## Division/Group Assignment List (ICS 204 WF)

<b>1. Incident Name:</b>		<b>3.</b>				
Cowbell Fire		<b>Branch:</b>	<b>Division/Group</b>			
<b>2. Operational Period:</b>		<b>Z</b>				
Date/Time From: 04/03/17 0800	Date/Time To: 04/03/17 2000					
<b>4. Operations Personnel</b>						
AIR ATTACK SUPERVISOR		FIELD OPERATIONS	Greg Brooks/Mike Davis (t)			
DIVISION/GROUP SUPERVISOR	Tom Crews	PLANNING OPERATIONS	Steve Weaver Paul Varnedoe (t)			
<b>5. Resources Assigned this Period</b>						
Strike Team / Task Force / Resource Designator	LWD	Leader	Number Persons	Drop Off PT./Time	Pick Up PT./Time	
T21A Colorado BLM	C-3	Ian Barrett	20			
EMTF		Jim Stout	1			
<b>6. Control Operations/Work Assignments:</b>						
<b>Task:</b>						
<ul style="list-style-type: none"> <li>• Continue suppression work at fire perimeter from Div A break</li> <li>• Complete triage of hunt camp structures in Div Z and Div A for point protection</li> <li>• Perimeter trail for firing operations north and east</li> </ul>						
<b>Purpose:</b>						
<ul style="list-style-type: none"> <li>• To keep fire confined and contained south and east of ADD 17</li> <li>• To protect hunt camp structures</li> </ul>						
<b>End State:</b>						
<ul style="list-style-type: none"> <li>• Control fire perimeter south and east of ADD 17 to eliminate threat to Seminole Nation Lands and Ceremonial Area</li> </ul>						
<b>7. Special Instructions:</b>						
<b>8. Division/Group Communication Summary</b>						
Function	Channel	RX Frequency N/W	RXTone/NAC	TX Frequency N/W	TX Tone/NAC	Mode
COMMAND	7	164.6250	118.8	163.1500	118.8	D
TACTICAL	8	166.7500		166.7500		A
AIR TO GROUND	10	168.3250			168.3250	A
<b>9. Prepared By (Resource Unit Leader)</b>		<b>Approved By (Planning Section Chief)</b>		<b>Date</b>	<b>Time</b>	
/s/ Melonie Sellers/Carol O'Bryan		Dave Berens/Steve Moore		04/02/17	13:00	



## Division/Group Assignment List (ICS 204 WF)

<b>1. Incident Name:</b>		<b>3.</b>				
Cowbell Fire		Branch:		Division/Group		
<b>2. Operational Period:</b>				<b>IA</b>		
Date/Time From: 04/03/17 0800	Date/Time To: 04/03/17 2000					
<b>4. Operations Personnel</b>						
AIR ATTACK SUPERVISOR			FIELD OPERATIONS		Greg Brooks/Mike Davis (t)	
DIVISION/GROUP SUPERVISOR	Kelly Cagle		PLANNING OPERATIONS		Steve Weaver Paul Varnedoe (t)	
<b>5. Resources Assigned this Period</b>						
Strike Team / Task Force / Resource Designator	LWD	Leader	Number Persons	Drop Off PT./Time	Pick Up PT./Time	
IHC Midewin	C-2	Logan Blankenship	18			
T6 ENG K31	E-7	Steven Staples	2			
T6 ENG #602 (local)						
Buggy #6 (local)		Sam Ashbaugh	2			
EMTF		Bob Bruington	1			
<b>6. Control Operations/Work Assignments:</b>						
<b>Task:</b>						
<ul style="list-style-type: none"> <li>Coordinate with BICY duty officer for notification of newly reported ignitions</li> <li>Coordinate initial attack action with assigned aviation and /or ground assets</li> <li>Determine IA resource prepositioning needs across BICY and FPWR</li> </ul>						
<b>Purpose:</b>						
<ul style="list-style-type: none"> <li>Ensure communications with FL Hwy Patrol regarding smoke on I-75</li> <li>Ensure timely response on any IA within BICY and FPWR</li> </ul>						
<b>End State:</b>						
<ul style="list-style-type: none"> <li>Protect human life</li> <li>Minimize environment damage to protect habitat of threatened and endangered species</li> <li>Minimize damage to public and private property</li> </ul>						
<b>7. Special Instructions:</b>						
<b>8. Division/Group Communication Summary</b>						
Function	Channel	RX Frequency N/W	RX Tone/NAC	TX Frequency N/W	TX Tone/NAC	Mode
COMMAND	7	164.6250	118.8	163.1500	118.8	D
TACTICAL	6	166.825		169.1125		A
AIR TO GROUND	10	168.3250		168.3250		A
<b>9. Prepared By (Resource Unit Leader)</b>		<b>Approved By (Planning Section Chief)</b>			<b>Date</b>	<b>Time</b>
/s/ Melonie Sellers/Carol O'Bryan		Dave Berens/Steve Moore			04/02/17	13:00

## Division/Group Assignment List (ICS 204 WF)

<b>1. Incident Name:</b>		<b>3.</b>				
Cowbell Fire		<b>Branch:</b>	<b>Division/Group</b> <b>Parliament/ Misc Fire Patrol</b>			
<b>2. Operational Period:</b>						
Date/Time From: 04/03/17 0800	Date/Time To: 04/03/17 2000					
<b>4. Operations Personnel</b>						
AIR ATTACK SUPERVISOR		FIELD OPERATIONS	Greg Brooks/Mike Davis (t)			
DIVISION/GROUP SUPERVISOR		PLANNING OPERATIONS	Steve Weaver Paul Varnedoe (t)			
<b>5. Resources Assigned this Period</b>						
Strike Team / Task Force / Resource Designator	LWD	Leader	Number Persons	Drop Off PT./Time	Pick Up PT./Time	
unstaffed						
<b>6. Control Operations/Work Assignments:</b>						
<b>Task:</b>						
<ul style="list-style-type: none"> <li>Patrol and monitor fires on BICY and FPWR with aviation and ground assets as directed by lead OSC</li> <li>Commensurate with values at risk</li> <li>Monitor fires for further suppression management action</li> </ul>						
<b>Purpose:</b>						
<ul style="list-style-type: none"> <li>Assure suppression action taken limits environmental impact, consistent with MIST tactics</li> </ul>						
<b>End State:</b>						
<ul style="list-style-type: none"> <li>Protect human life</li> <li>Minimize damage to public and private property</li> <li>Minimize environmental damage to protect habitat of threatened and endangered species</li> </ul>						
<b>7. Special Instructions:</b>						
<ul style="list-style-type: none"> <li> </li> </ul>						
<b>8. Division/Group Communication Summary</b>						
Function	Channel	RX Frequency N/W	RXTone/NAC	TX Frequency N/W	TX Tone/NAC	Mode
COMMAND	7	164.6250	118.8	163.1500	118.8	D
TACTICAL	11	166.7250	065.9	166.7250	065.9	D
AIR TO GROUND	10	168.3250		168.3250		A
<b>9. Prepared By (Resource Unit Leader)</b>		<b>Approved By (Planning Section Chief)</b>			<b>Date</b>	<b>Time</b>
/s/ Melonie Sellers/Carol O'Bryan		Dave Berens/Steve Moore			04/02/17	13:00

## Division/Group Assignment List (ICS 204 WF)

<b>1. Incident Name:</b>				<b>3.</b>			
Cowbell Fire				<b>Branch:</b>		<b>Division/Group Structure Protection Group</b>	
<b>2. Operational Period:</b>							
Date/Time From: 04/03/17 0800		Date/Time To: 04/03/17 2000					
<b>4. Operations Personnel</b>							
AIR ATTACK SUPERVISOR				FIELD OPERATIONS		Greg Brooks/Mike Davis (t)	
DIVISION/GROUP SUPERVISOR		Ryan Vice		PLANNING OPERATIONS		Steve Weaver Paul Varnedoe (t)	
<b>5. Resources Assigned this Period</b>							
Strike Team / Task Force / Resource Designator		LWD	Leader		Number Persons	Drop Off PT./Time	Pick Up PT./Time
MOD BIFZ #2		O-92		Westly Richardson		8	
T6 ENG WFS		E-8					
T6 ENG WFS		E-9					
T6 ENG Attack One		E-10					
STSP				Glenn Phillips		1	
EMTF				Matt Lancaster		1	
<b>6. Control Operations/Work Assignments:</b>							
<b>Task:</b>							
<ul style="list-style-type: none"> <li>Assess contact procedures with Collier County EMS and Sheriff Dept to assure smooth communication in event of community evacuation needs</li> <li>Evaluate Sanctuary community and hunt camp area in DIV A area to complete structure protection plan</li> <li>Coordinate with landowners to determine special considerations and road or trail access</li> </ul>							
<b>Purpose:</b>							
<ul style="list-style-type: none"> <li>Ensure timely response to protect human life, property and access</li> </ul>							
<b>End State:</b>							
<ul style="list-style-type: none"> <li>Maintain communications with appropriate county emergency management and law enforcement agencies to complete timely evacuations</li> </ul>							
<b>7. Special Instructions:</b>							
<b>8. Division/Group Communication Summary</b>							
Function	Channel	RX Frequency N/W	RXTone/NAC	TX Frequency N/W	TX Tone/NAC	Mode	
COMMAND	7	164.6250	118.8	163.1500	118.8	D	
TACTICAL	11	166.7250	065.9	166.7250	065.9	D	
AIR TO GROUND	10	168.3250		168.3250		A	
<b>9. Prepared By (Resource Unit Leader)</b>			<b>Approved By (Planning Section Chief)</b>			<b>Date</b>	<b>Time</b>
/s/ Melonie Sellers/Carol O'Bryan			Dave Berens/Steve Moore			04/02/17	13:00

## Division/Group Assignment List (ICS 204 WF)

<b>1. Incident Name:</b>		<b>3.</b>					
Cowbell Fire		Branch:		Division/Group			
<b>2. Operational Period:</b>				<b>Firing Group</b>			
Date/Time From: 04/03/17 0800	Date/Time To: 04/03/17 2000						
<b>4. Operations Personnel</b>							
AIR ATTACK SUPERVISOR			FIELD OPERATIONS		Greg Brooks/Mike Davis (t)		
DIVISION/GROUP SUPERVISOR	Mary Owen		PLANNING OPERATIONS		Steve Weaver Paul Varnedoe (t)		
<b>5. Resources Assigned this Period</b>							
Strike Team / Task Force / Resource Designator	LWD	Leader	Number Persons	Drop Off PT./Time	Pick Up PT./Time		
MOD Ashley		Ben Sanders	8				
Aerial Ignition		Adam Kunce	1				
Transport Buggy							
Transport Buggy							
Transport Buggy							
<b>6. Control Operations/Work Assignments:</b>							
<b>Task:</b>							
<ul style="list-style-type: none"> <li>Continue strategic firing operations as coordinated with DIV A</li> </ul>							
<b>Purpose:</b>							
<ul style="list-style-type: none"> <li>No intent to complete a large scale burnout, instead a purposeful firing operation to confine and contain the fire along ADD 17 thru DIV A to DIV Z</li> <li>Complete point protection techniques around hunt camps in DIV Firing Group and DIV Z</li> </ul>							
<b>End State:</b>							
<ul style="list-style-type: none"> <li>Keep fire north and west of ADD 17 to protect Sanctuary Community and Ceremonial and Tribal Lands</li> </ul>							
<b>7. Special Instructions:</b>							
<b>8. Division/Group Communication Summary</b>							
Function	Channel	RX Frequency N/W	RXTone/NAC	TX Frequency N/W	TX Tone/NAC	Mode	
COMMAND	7	164.6250	118.8	163.1500	118.8	D	
TACTICAL	4	168.6000		166.6000		A	
AIR TO GROUND	10	168.3250		168.3250		A	
<b>9. Prepared By (Resource Unit Leader)</b>		<b>Approved By (Planning Section Chief)</b>			<b>Date</b>	<b>Time</b>	
/s/ Melonie Sellers/Carol O'Bryan		Dave Berens/Steve Moore			04/02/17	13:00	

# AIR OPERATIONS SUMMARY

OPERATIONAL PERIOD DATE: 04-3-17

0900-2000

<b>1. INCIDENT NAME:</b> Cowbell	<b>2. PREPARED BY:</b> Mike Rock	<b>PREPARED DATE/TIME:</b> 04/02/2017 1730	<b>3. Sunrise:</b> 0717 <b>Sunset:</b> 1942
<b>4. REMARKS (Safety Notes, Hazards, Air Operations Special Equipment,, etc.):</b> Medivac Aircraft: <b>See Medical Plan.</b> MTR- Located along state road 29. Fire Dispatch gets MTR activity every morning Do not over fly structures with external load missions. All aircraft should use strobes and running lights in smoky conditions. Hazards: Snags, non-incident aircraft, and winds. Contract helicopter working special use permit in North Central portion of BICY. ATGS has air to air communications.			<b>5. Squawk</b> 1255

6. PERSONNEL	Phone	7. FREQUENCIES	AM	FM	8. FIXEDWING	Base
AOBD: Mike Rock ASGS: Pete Kubiak	606-813-9750 404-661-4819	Air/Air Rotor	123.575		Bravo 89-  T-801 T-819	ASM--Marco Island  Seat –IMM, Start 0900 Seat—IMM, Start 0900
ATGS: Ken McLaughlin	813-997-0317	Air/Air Fixed Wing	118.825			
<u>Oasis Helibase (9FL7)</u>	239-695-0278	Air/Ground Cowbell Air/Ground IA		168.3250 RX/TX (A)  169.1125 RX/TX (A)		
HEB2: Denise Coker HEB (t) Mike Roof Seat Manager – Keith Olive	770-548-8092  801-503-7851	Flight Following (BICY)		169.7250 RX (D) NAC (Hex: 5EA) (Dec: 1514)		
Big Cypress Fire Dispatch	239-695-9280 x 104	Air/Guard  Deck		168.6250 RX/TX Tone 110.9  166.7750 NAC (Hex 293) (Dec 0659)		

## 9. HELICOPTERS (Use Additional Sheets As Necessary)

FAA N# or Designator	TY	MAKE/MODEL	BASE	START	REMARKS	FAA N# or Designator	TY	MAKE/MODEL	BASE	START	REMARKS
206RW	3	Bell 206	Oasis	off	Park Helicopter	1KA	1	K-MAX	Oasis	0900	Bucket
0HH	3	Bell 206	Oasis/RON-Miami	0900	Recon / Bucket	61CK	1	S-61	Oasis	0900	Tanked
5HQ	2	Bell 205++	Oasis	0900	Crew/ Bucket						
6HX	2	Bell 205	Oasis	0900	Crew/Bucket						

## 10. TASK/MISSION/ASSIGNMENT (Use ICS-220a if additional space needed; Type/Function includes: Air Tactical, Retardant, Recon, Personnel Transport, Water Dropping, etc.)

TYPE/FUNCTION	NAME OF PERSONNEL OR CARGO (if applicable) OR INSTRUCTIONS FOR TACTICAL AIRCRAFT	MISSION START	FLY FROM	FLY TO
Mapping	As Requested	0930		
Reconnaissance	As Requested	0930		
Water Drops	As Requested	0930		

## HEALTH AND SAFETY MESSAGE

### *SAFETY is YOU & ME*

We are ALL accountable for SAFE behaviors

**INCIDENT:** Cowbell Fire

**DATE:** April 3, 2017

**Major Hazards and Risks:** Driving, Aviation, Heat Related Injuries and Snags

**Driving** – Obey all state and local traffic laws AT ALL TIMES. Remember to wear safety belts and run headlights when travelling on the incident. There is a **NIGHT TIME speed limit of 45 mph** on Highway 41 and Highway 29 for the protection of wildlife and your safety, RESPECT IT!!

**Aviation** – Everyone has a role in safe aircraft operations on this incident. Request aviation resources one if the mission requires it. If you are a ground resource, be ready to communicate with the pilot and be sure the area is clear for bucket drops.

**Heat-Related Injuries** – heat related injuries (heat cramps, heat exhaustion, and heat stroke) are most likely to occur when it's **hot and humid**, but can occur in any environmental conditions. Keep hydrated and drink one quart of water before and after heavy work periods.

**Snags** – Maintain situation awareness at all times. Be aware of forecasted winds. Dead, broken, or burning tops and limbs overhead. IRPG pp. 22-23.



10. ATTEMPTING FRONTAL ASSAULT ON FIRE

## WATCH OUT

- **Lookouts** – Can you see over the tree tops? Where is the fire? If air attack is your lookout, what happens when they leave your space? Does your lookout know your *location*?
- **Communications** – Are you on *the right channel* with your lookout? Do you have extra batteries? Are you scanning? The right channels?
- **Escape Routes** – Is there just one path through the *jungle*? Identify the ones that count and flag them. Find more than one....if you can.
- **Safety Zones** – *water won't work while wildlife want wetlands!* Go for green areas near structures or black burned areas. You might need to create a black area as a last resort so carry some fire makers and identify some grassy areas with light fuels to Wag Dodge.

Incident Safety Officers: Ken Gordon(t) , Buddy Kelly, Mark Sullivan

## INCIDENT SAFETY ANALYSIS 215a

Cowbell Fire - Monday, April 03, 2017

8. Location	9. Hazard	6. Control or Abatement Action (Engineering, Administrative, PPE, Avoidance, Education, etc)
DIVS ALL	Hazard Trees	<ul style="list-style-type: none"> <li>~ Avoid cutting Hazard Trees, unless they are an obvious Safety Hazard to crews in the vicinity (Reference the "Big Cypress National Preserve - Wildfire Incident Resource Protection Plan") ~ Follow "Hazard Tree Safety" guidelines, IRPG page 22.</li> <li>~ Post lookouts, or use a spotter in mop-up areas with personnel.</li> <li>~ Don't park vehicles or take breaks in high concentrations of hazard trees.</li> <li>~ Establish trigger points for disengagement during high wind events.</li> <li>~ Remember that the hazard zone extends a minimum of 2 1/2 tree heights.</li> </ul>
DIVS ALL	Helicopter Operations	<ul style="list-style-type: none"> <li>~ Stay clear of all bucket drops when suppression actions are in place and allow 1 minute prior to re-entry.</li> <li>~ Monitor A-G communications.</li> <li>~ Follow aviation safety guidelines in IRPG and IHOG.</li> </ul>
DIVS ALL	Injury & Medical Emergency	<ul style="list-style-type: none"> <li>~ For "air hoist capability" or "snake bite treatment" contact Big Cypress Communications to request "Miami-Dade Air Rescue" for assistance.</li> <li>~ Assist injured employee appropriate medical care.</li> <li>~ Use EMT's on Division for initial care.</li> <li>~ Follow medical protocol as outlined in ICS-206 &amp; IRPG Pgs 99-108</li> </ul>
DIVS ALL	Driving & Traffic	<ul style="list-style-type: none"> <li>~ Practice "Defensive Driving" techniques traveling on all roads and city streets.</li> <li>~ Use spotters when backing.</li> <li>~ Honk horn to alert personnel when backing.</li> <li>~ Keep clutter off dash and inside cab.</li> <li>~ Follow Driving LCES (Lights, Chock blocks, Emergency brake, Seat belts.</li> <li>~ Always use headlights.</li> <li>~ Yield to pedestrians and bicycles.</li> <li>~ Observe posted speed limits.</li> <li>~ Use the 3 second rule for following distance when driving.</li> <li>~ Use chock blocks, turn wheels into hill.</li> <li>~ Avoid distractions (eating, cell phones, radio).</li> <li>~ Ensure that windshields are kept clean of dust and bugs.</li> </ul>
DIVS ALL	Chain Saw Operations	<ul style="list-style-type: none"> <li>~ Follow "Hazard Tree Safety" guidelines, IRPG page 22</li> <li>~ Look up, Look down, Look around for hazard tree indicators.</li> <li>~ Only fell and buck trees within your expertise, and training.</li> <li>~ Follow "Procedural Felling Operations" on page 79 in IRPG.</li> <li>~ Do not fall trees during high wind events.</li> <li>~ Ensure proper use of all required PPE.</li> </ul>
DIVS ALL	Firing Operations & Devices	<ul style="list-style-type: none"> <li>~ Only personnel trained in the use of each device will be authorized to use firing equipment.</li> <li>~ Ensure all personnel are aware of firing operation that may affect them.</li> <li>~ Wear appropriate PPE.</li> <li>~ Ensure aerial/ground ignition plans have been adequately developed and personnel are briefed.</li> </ul>
DIVS ALL	ATV/UTV use	<ul style="list-style-type: none"> <li>~ Ensure equipment is inspected and safe to use.</li> <li>~ Restrict ATV/UTV use to established trails</li> <li>~ Ensure operator is trained and certified to operate.</li> <li>~ Ensure operator has proper PPE according to the Redbook and/or RMA.</li> <li>~ Question if it is mission critical.</li> </ul>

## INCIDENT SAFETY ANALYSIS 215a

DIVS ALL	Fatigue & Over Exertion	<ul style="list-style-type: none"> <li>~ Drink 1 quart of water each hour during and after work.</li> <li>~ Rotate crews out of smoky areas.</li> <li>~ Set a reasonable work pace and allow adequate rest breaks while on the project.</li> <li>~ Stagger work crews start time to limit fatigue.</li> <li>~ Use buddy system to monitor personnel of heat related and fatigue issues.</li> <li>~ Follow work / rest guidelines.</li> </ul>
DIVS ALL	Heavy Equipment Operations	<ul style="list-style-type: none"> <li>~ Ensure communications are established with operators.</li> <li>~ Use hand signals if other communications are unavailable.</li> <li>~ Maintain a 50'-100' exclusion area around equipment and increase it to 1 1/2 times tree height when in timber.</li> <li>~ Use a spotter when backing.</li> <li>~ Avoid working below heavy equipment.</li> </ul>
DIVS ALL	Communications	<ul style="list-style-type: none"> <li>~ Maintain communication with aviation resources, and suppression organization.</li> <li>~ Ensure all know frequency and protocol for contacting resources.</li> <li>~ Utilize the ICS 205.</li> <li>~ Utilize human repeaters when working in dead spots.</li> </ul>
DIVS ALL	Wildlife	<ul style="list-style-type: none"> <li>~ Watch out for wildlife such as alligators, bear, deer, panthers, snakes</li> <li>~ Do not feed, handle or taunt wildlife</li> <li>~ Maintain safe distance and avoid contact ~Discard trash (food and containers) in proper disposal sites</li> <li>~ Secure pump location sites, watch for alligators, snakes and other wildlife</li> </ul>
DIVS All	Swamp Buggy	<ul style="list-style-type: none"> <li>~ Ensure equipment is inspected and safe to use</li> <li>~ Restrict Buggy use to established trails</li> <li>~ Ensure operator is trained and certified to operate</li> <li>~ Ensure operator has proper PPE</li> <li>~ Passengers wear hardhats &amp; use 3 points of contact when loading or unloading</li> <li>~ Secure all seating so is stable and does not move</li> </ul>
DIVS ALL	Unburned Area/Reburn Potential	<ul style="list-style-type: none"> <li>~ Monitor weather.</li> <li>~ Base actions upon observed and predicted fire behavior.</li> <li>~ LCES Checklist (IRPG pg. 6).</li> <li>~ Look Up, Down and Around (IRPG pg. 2-3).</li> </ul>
DIVS ALL	Extreme Fire Behavior	<ul style="list-style-type: none"> <li>~ Share weather observations with all personnel assigned to division.</li> <li>~ Establish "Trigger Points" to withdraw.</li> <li>~ Use "Risk Management" process prior to engaging in suppression actions, refer to page 1, IRPG.</li> </ul>
DIVS ALL	Firefighter & Public Smoke Exposure	<ul style="list-style-type: none"> <li>~ Identify homes and structures with private parties remaining behind the evacuation.</li> <li>~ Identify personnel responsible for contacting private parties.</li> <li>~ Use warning lights and provide traffic control on roadways during smoky and night operations.</li> <li>~ Rotate crews out of smoky areas during firing and mop-up operations.</li> <li>~ Contact Communications when firing operations are initiated.</li> </ul>
DIVS All	Structure Protection & HAZMAT	<ul style="list-style-type: none"> <li>~ Review "Wildland Urban Interface" Watch outs, IRPG page 12.</li> <li>~ Use "Structure Assessment" checklist, IRPG pages 12-16.</li> <li>~ Follow "HAZMAT Incident Operations" on pages 34-36 in IRPG.</li> </ul>
DIVS ALL	Unplanned Public Interaction	<ul style="list-style-type: none"> <li>~ Be alert to non-fire personnel in areas with suppression personnel.</li> <li>~ All non-fire personnel will be escorted while on fireline.</li> <li>~ Post lookouts to in areas with public to avoid conflicts with mission tasks.</li> <li>~ Ensure sufficient security to restrict access to exclusion area.</li> </ul>



# MEDICAL PLAN (ICS 206)

<b>1. Incident Name:</b> Cowbell Fire	<b>2. Operational Period:</b> Date From: 04-03-17 Date To: 04-03-17 Time From: 0800 Time To: 2000
--	--

3. Medical Aid Stations:			
Name	Location	Contact Number(s)/Frequency	Paramedics on Site?
Gene-Paul Matson EMP, MEDL	Medical ICP	434-665-0444	x Yes <input type="checkbox"/> No
James Fortner EMTF, MEDL T	Medical ICP	202-236-3139	<input type="checkbox"/> Yes x No
Jim Stout	TBD	480-296-1566	x Yes <input type="checkbox"/> No
Bob Bruington	TBD	801-782-3585	<input type="checkbox"/> Yes x No
Tracy Milakovic	TBD	719-850-0022	<input type="checkbox"/> Yes x No
Matt Lancaster	TBD	303-870-5248	<input type="checkbox"/> Yes x No

4. Transportation (indicate air or ground):			
Ambulance Service	Location	Contact Number(s)/Frequency	Level of Service
Collier County EMS (ground)	Everglades City (Medic 61)	911	x ALS <input type="checkbox"/> BLS
Collier County Med-Flight (air)	Naples Airport	911	x ALS <input type="checkbox"/> BLS
			<input type="checkbox"/> ALS <input type="checkbox"/> BLS
			<input type="checkbox"/> ALS <input type="checkbox"/> BLS

5. Hospitals:							
Hospital Name	Address	Contact Number(s)	Travel Time		Trauma Center	Burn Center	Helipad
			Air	Ground			
Physicians Regional Collier Blvd	8300 Collier Blvd. Naples, FL 34114 Lat:26°6'18.7884"/Long: -81°41'6.3486"	239-354-6000 (Main) 239-354-6190 (ER)	15	50	<input type="checkbox"/> Yes Level: _____	<input type="checkbox"/> Yes x No	x Yes <input type="checkbox"/> No
Physicians Regional Pine Ridge	6101 Pine Ridge Road, Naples 34119 Lat:26°12'49.9752"/Long: -81°43'57.2592"	239-348-4000 (Main) 239-304-4748 (ER)	15	50	<input type="checkbox"/> Yes Level: _____	<input type="checkbox"/> Yes x No	x Yes <input type="checkbox"/> No
Naples Community Hospital	350 7 <sup>th</sup> Street North, Naples 34102 Lat:26°9'2.7498"/Long: -81°47'54.4164"	239-513-7709 (Main) 239-436-5151 (ER)	15	60	X Yes Level: <u>2</u>	<input type="checkbox"/> Yes x No	x Yes <input type="checkbox"/> No
Jackson Memorial Hospital	1611 NW 12 Avenue, Miami Lat:26°12'49.9752"/Long: -81°43'57.2592"	305-585-1111 (Main) 305-585-6910 (ER)	20	60	X Yes Level: <u>1</u>	x Yes <input type="checkbox"/> No	x Yes <input type="checkbox"/> No
Kendal Regional Medical Center	11750 SW 40 <sup>th</sup> St., Miami 33175 Lat:25°43'54.951"/Long: -80°23'8.8722"	305-223-3000 (Main) 305-227-5544 (ER)	20	50	X Yes Level: <u>1</u>	<input type="checkbox"/> Yes x No	X Yes <input type="checkbox"/> No

6. Special Medical Emergency Procedures:
<ul style="list-style-type: none"> <li>Patient or nearest responder notifies Group Supervisor who will respond to the scene and become the "incident within an incident" (IWI) commander.</li> <li><b>Group Supervisor will notify nearest medical responder and ICP-Communications</b> of the incident and "Nine Line" report attached to this 206 or page 108 of the IRPG.</li> </ul> <p>Call Big Cypress Communications if it is determined that <b>air hoist capability or snake bite treatment</b> is required. Miami-Dade Air Rescue will be used for an air hoist rescue and also for snake bite treatment. Communications will advise the 911 dispatcher for the helicopter to use communicate through Big Cypress Dispatch.</p> <p>Note: If possible, give coordinates in aviation format – Degrees, Decimal, Minutes</p> <p><input type="checkbox"/> Check box if aviation assets are utilized for rescue. If assets are used, coordinate with Air Operations.</p>

<b>7. Prepared by</b> (Medical Unit Leader): Name: Gene-Paul Matson/James P. Fortner(T) Signature: <i>/s/ James P. Fortner</i>	<b>8. Approved by</b> (Safety Officer): Name: Ken Gordon Signature: <i>/c/ Kenneth R. Gordon</i>
--	--

ICS 206	Date/Time: <u>April, 2, 2017</u>
---------	----------------------------------

<b>INCIDENT RADIO COMMUNICATIONS PLAN</b>	1. Incident Name COWBELL	2. Date Time Prepared 4-2-17	3. Operational Period Date/Time 4-3-17 0800 to 2000
---	-----------------------------	---------------------------------	--

**4. Basic Radio Channel Utilization**  
Mode: W= Wideband, N= Narrowband, D= Digital, M= Mixed

CH #	Function	Frequency	Tone/NAC	Mode	TGID	Assignment	Remarks
1	CARNs RPT	RX: 172.4250	1035	D	1		
		TX: 170.1000	1035				
2	OASIS RPT	RX: 172.4250	1035	D	1		
		TX: 171.6250	1035				
3	BCY LCL	RX: 166.7750	NO TONE	A			
		TX: 166.7750	NO TONE				
4	BICY TAC 1	RX: 168.6000	NO TONE	A		Division A / Firing Group	
		TX: 168.6000	NO TONE				
5	BICY TAC 2	RX: 168.2500	NO TONE	A		Division G	
		TX: 168.2500	NO TONE				
6	A/G 59	RX: 169.1125	NO TONE	A		IA A/G	
		TX: 169.1125	NO TONE				
7	PANTHER RPT	RX: 164.6250	1188	D	1	All Divisions CMD Repeater	
		TX: 163.1500	1188				
8	PANTHER TAC 1	RX: 166.7500	NO TONE	A		Division Z	
		TX: 166.7500	NO TONE				
9	PANTHER TAC 2	RX: 166.8250	NO TONE	A		Initial Attack	
		TX: 166.8250	NO TONE				
10	A/G 85	RX: 168.3250	NO TONE	A		Primary A/G	
		TX: 168.3250	NO TONE				
11	EVERGLADES TAC 1	RX: 166.7250	0659	D	1	Structure Protection/Parliament/Misc.	
		TX: 166.7250	0659				
12	A/G 44	RX: 167.6250	NO TONE	A			
		TX: 167.6250	NO TONE				
13	WHITE V21	RX: 154.2800	NO TONE	A			
		TX: 154.2800	NO TONE				
14	BLUE V23	RX: 154.2950	NO TONE	A			
		TX: 154.2950	NO TONE				
15	BCYFLTRP	RX: 169.7250	1514	D	1		
		TX: 163.3875	1738				
16	AIR GUARD	RX: 168.6250	NO TONE				
		TX: 168.6250	110.9				

5. Prepared by (Communications Unit) **GEORGE ROSENTHAL COML**

*Note: This is not a standard NWCg ICS205 Form*

# Cowbell Fire Transportation Map

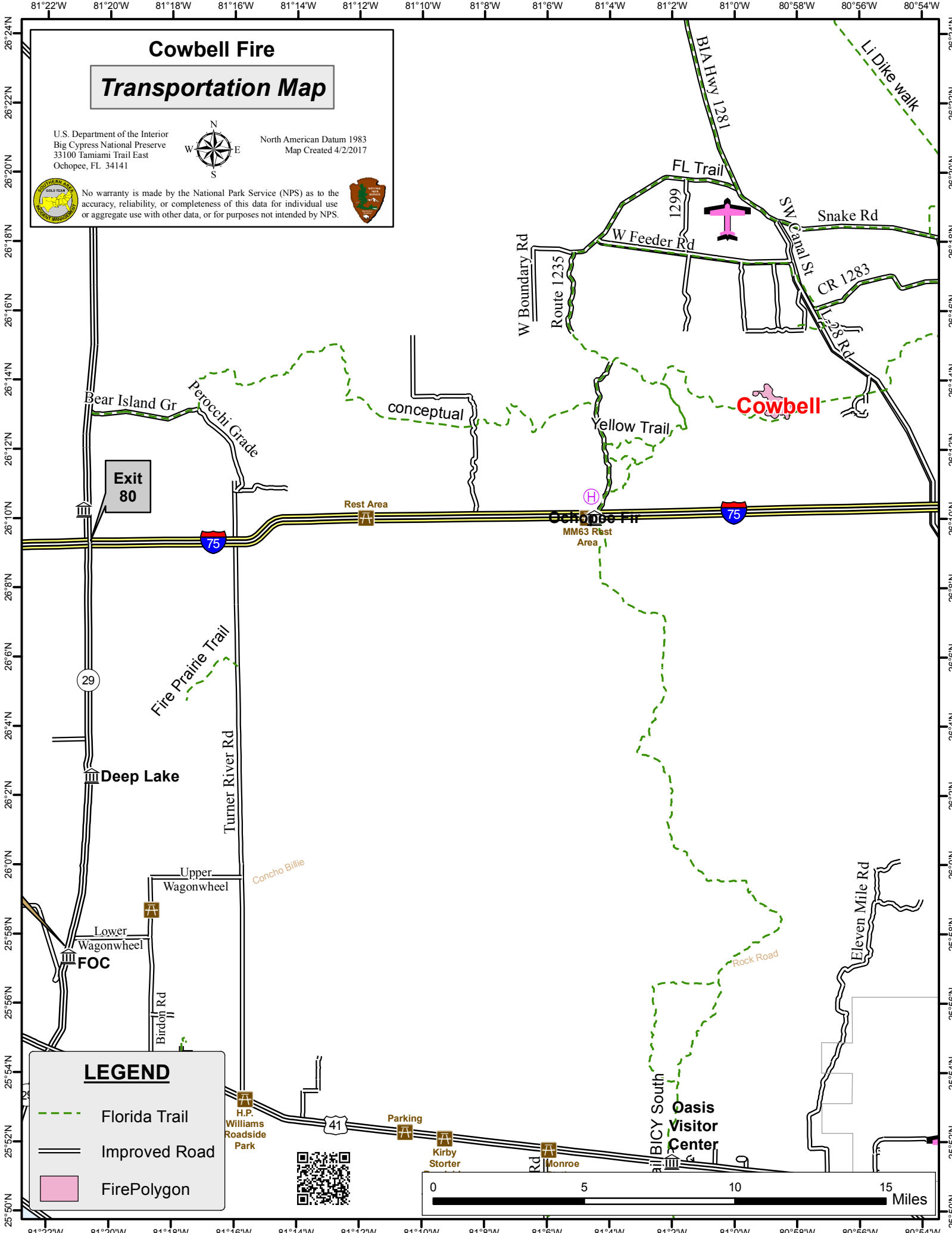
U.S. Department of the Interior  
Big Cypress National Preserve  
33100 Tamiami Trail East  
Ochopee, FL 34141



North American Datum 1983  
Map Created 4/2/2017



No warranty is made by the National Park Service (NPS) as to the accuracy, reliability, or completeness of this data for individual use or aggregate use with other data, or for purposes not intended by NPS.



Exit 80

Rest Area

Ochopee Inn  
MM63 Rest Area

Cowbell

Fire Prairie Trail

Deep Lake

Turner River Rd

Upper Wagonwheel

Concho Billie

Lower Wagonwheel

FOC

Birdon Rd

H.P. Williams  
Roadside Park

Parking

Kirby Storter Rd

Monroe Rd

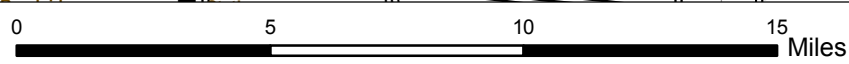
BICY South

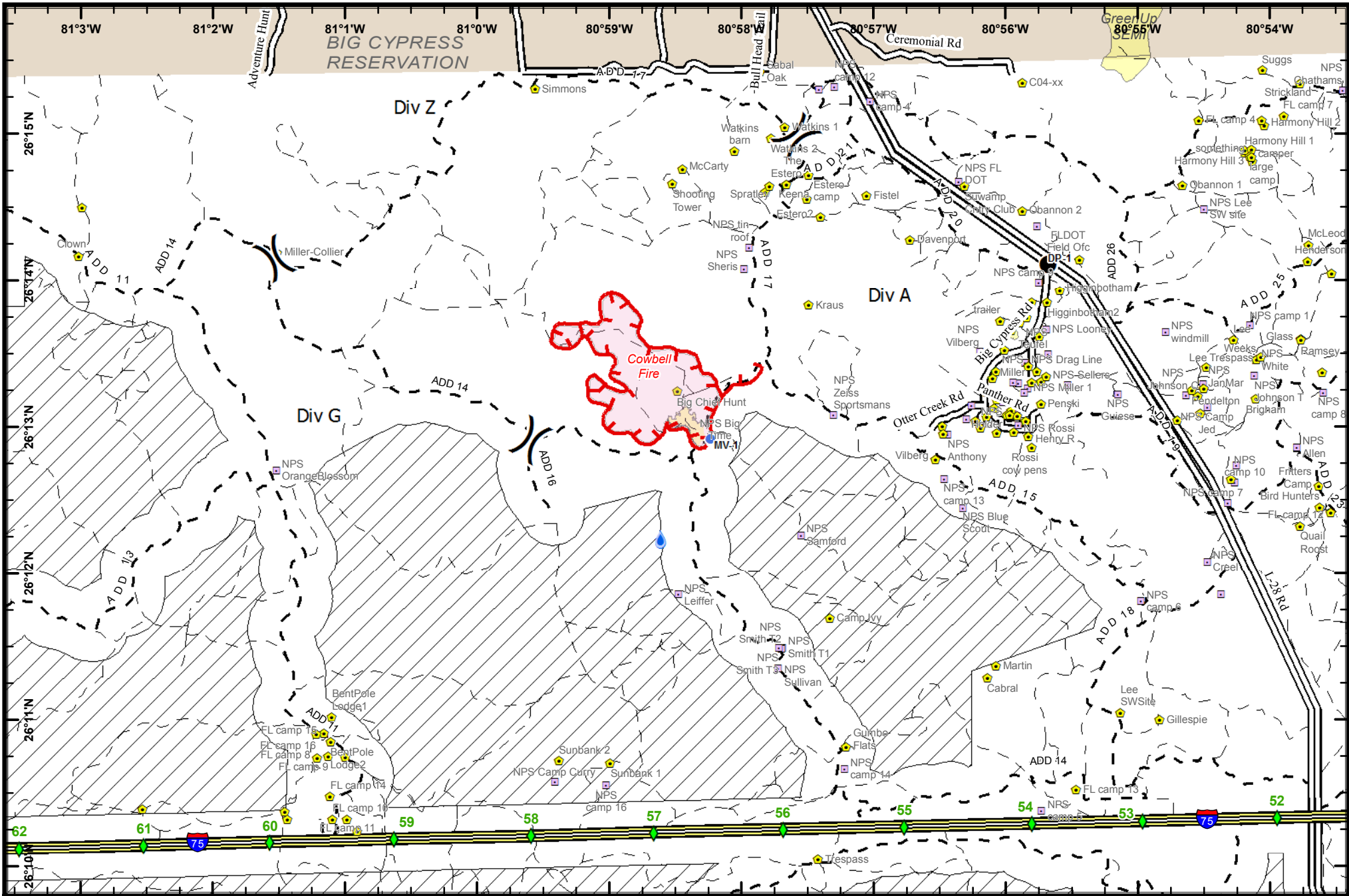
Oasis  
Visitor Center

Eleven Mile Rd

## LEGEND

- Florida Trail
- Improved Road
- FirePolygon





**Cowbell Fire**  
FL-BCP-017033



**IAP Map**  
April 3, 2017  
Day Shift

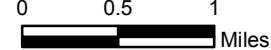
421 Approximate Acres  
and Fire Perimeter  
as of 4/2/16 @ 1330

**Legend**

- Drop Point
- Helispot
- Uncontrolled Fire Edge
- Fire Polygon
- Fire Perimeter
- Hydro Station
- ★ Private Structures
- NPS Property
- ◆ Mile Marker
- ▬ I - 75
- ▬ Improved Road
- ▬ roads\_Seminole
- Primary Buggy Trail
- Non-Designated Trail (closed)
- ▨ Eligible for Wilderness
- Big Cypress Reservation



NAD 83 UTM 17



## PHONE LIST - COWBELL FIRE

Position	Name	Phone Number	Position	Name	Phone Number
<b>COMMAND</b>			<b>PLANNING</b>		
Incident Commander	Steve Parrish	850-567-9507	Chief	Dave Berens	601-319-6823
Incident Commander (t)	Lance Elmore	501-520-7276	Chief	Steve Moore	803-360-6956
Deputy Incident Commander	Marty Bentley	423-584-1682	Resource Unit Leader	Melonie Sellers	601-508-8997
Deputy Incident Commander (t)	Debbie Beard	850-524-9966	Resource Unit Leader	Carol O'Bryan	903-263-8704
Liaison Officer	Mike Wright	970-819-2890	Resource Unit Leader (t)	Jessica Hollingsworth	540-383-6531
Public Information	Susie Heisey	912-281-8171	Situation Unit Leader	Jeff DeMatteis	601-415-9080
Public Information	Michelle Burnett	803-920-6167	Fire Behavior Analyst	Gary Jarvis	251-288-1084
Public Information (t)	Donald Simon	910-975-1895	IMET	John Pendergrast	240-499-6649
Safety Officer	Buddy Kelly	850-447-1344	GISS	Chris Evans	928-273-4203
Safety Officer	Mark Sullivan	205-531-7183	GISS	Melanie Hans	618-315-5404
Safety Officer (t)	Ken Gordon	850-688-4474	GISS (t)	Jeff Adams	361-205-4744
			Demob	Thomas Barrett	478-550-6372
<b>OPERATIONS</b>			Check In	Jeff Turner	865-684-0095
Planning Ops	Steve Weaver	828-360-2476	Check In (t)	Tonia Johnson	678-927-1791
Planning Ops (t)	Paul Varnedoe	423-650-2184	Training Specialist	Jon Davis	231-878-0074
Field Ops	Greg Brooks	828-421-5025	Compter Tech	Jerry Dronberger	479-747-7020
Field Ops (t)	Mike Davis	936-219-7743	Compter Tech	Rusty Brown	478-973-6231
Division A	Chad Cook	828-360-4985			
Division A (t)	Heath Thomas	501-208-7077	<b>LOGISTICS</b>		
Division G	E.J. Bunzendahl	859-556-2347	Chief	Willie Boston	770-328-3186
Division Z	Tom Crews	252-216-6361	Deputy	Jerry Jussila	218-235-8983
Division Initial Attack	Kelly Cagle	336-302-0343	Supply Unit	Tom Piper	727-514-5513
Division Parliament	UNSTAFFED		Facilities Unit	Tom Phillips	936-635-7154
Structure Protection Group	Ryan Vice	979-215-1936	Ground Support Unit Leader	Michael Howarth	936-414-2697
Firing Group	Mary Owen	601-917-2860	Ordering Manager	Sherry Kite	850-209-2150
<b>AIR OPERATIONS</b>			Receiving & Distribution	Chris Combs	727-992-0046
Air Operation Branch Director	Mike Rock	606-813-9750	Base Camp Manager	Mike Justus	
Air Support Group Supervisor	Pete Kubiak	404-661-4819	Communications	George Rosenthal	936-707-1832
<b>FINANACE</b>			Communications	Ron Regan	828-772-8514
Chief	Wanda Kelley	423-584-1472	Medical Unit Leader	Gene-Paul Matson	434-665-0444
Chief (t)	Holly Cyprian	928-919-3027	Medical Unit Leader (t)	James Fortner	202-236-3139
Time Unit Leader	Laura Wilson	765-427-7564			
Time Unit Leader (t)	Sherise Foster	919-943-7843			
Comp/Claims	Terri McDonald	352-454-5385			
Equipment Time Recorder (t)	Donna Line	706-474-3216			
Personel Time Recorder	Sherise Foster	919-943-7843			
Personnel Time Recorder (t)	Gustavo Vallejo	423-457-7403			

<b>UNIT LOG</b>	1. Incident Name	2. Date Prepared	3. Time Prepared
	4. Unit Name/Designators	5. Unit Leader (Name and Position)	6. Operational Period

7. Personnel Roster Assigned		
Name	ICS Position	Home Base

8. Activity Log	
Time	Major Events

9. Prepared by (Name and Position)

**Medical 9-Line Information**

Date: \_\_\_\_\_ Time: \_\_\_\_\_ Location: \_\_\_\_\_

Line	Information	Notes:
1.	<p><b><u>Level of Severity:</u></b></p> <p><input type="checkbox"/> <b>RED</b> – (Airway obstruction, Difficulty Breathing. Major Blood Loss Cardiac chest pain, Crush Injury to the chest, Penetrated object, Open fracture, 2° or 3° burn more than 4 palm sizes)</p> <p><input type="checkbox"/> <b>YELLOW</b> – (Closed fracture, Significant trauma, Lacerations and bleeding not controlled by direct pressure, Not able to walk, 2° or 3° burn, no more than 1 or 2 palm sizes)</p> <p><input type="checkbox"/> <b>GREEN</b> – (Small area abrasions or lacerations, bleeding controlled By pressure, Minor sprain, general sickness)</p>	<p align="center"><b><u>Triage Page 48, IRPG-2010</u></b></p> <p align="center">Code 3 ALS Ambulance or Medivac, Helicopter Medical Radio traffic Priority</p> <p align="center"><b>Emergency radio traffic restricted to: On site Medic, DIV. SUP, or on scene IC</b></p> <p align="center">Ambulance or consider air transport if at a remote Location.</p> <p align="center"><b>Medical radio traffic may have priority as Above.</b></p> <p align="center">MEDICAL TRANSPORT via crew, ground support, field medic, or air if at a remote location.</p> <p align="center">Fire Radio traffic unchanged.</p>
2.	<p><b><u>Patient Assessment/ Injuries &amp; Treatment</u></b></p> <p>Patient #1 _____ _____ _____ _____</p> <p>Patient #2 _____ _____ _____ _____</p>	<p align="center"><b><u>Assessment Page 42, IRPG – 2010</u></b></p> <p align="center"><b><u>Treatment Page 41, 43-47</u></b></p> <ul style="list-style-type: none"> <li>• Level of Consciousness</li> <li>• Breathing Rate</li> <li>• Pulse Rate</li> <li>• Skin Condition – Pink or Pale, Warm or Cold</li> </ul> <p align="center"><b><u>Injury:</u></b></p> <p>Bleeding      Heat Fracture      Burns Head Injury    Bee Sting Eye</p> <p align="center">Sex and age of victim</p>
3.	<p><b><u>Patient Location</u></b></p> <p>_____</p> <p>Lat: _____ ° _____ ' , Long: _____ ° _____ ' _____</p>	<p>Camp ground, trail, road intersection, Drop Point, Staging Area, Division, Spike Camp, Line area or GPS</p>
4.	<p><b><u>Additional Equipment or Medic Needed:</u></b></p> <p>_____</p>	<p>Hoist, SKED, Backboard, Litter, Rope, Paramedic, Trauma Bag, O2, AED</p>
5.	<p><b><u>On Scene Medic and IC:</u></b></p> <p>_____</p>	<p>Crew medic, Field medic, wilderness First Aid provider</p> <p align="center">Who is the IC for this incident?</p>
6.	<p><b><u>Operational Channel:</u></b></p> <p>Command _____ Tactical _____</p> <p>EMS Helicopter Contact Air Guard – RX 168.625 TX 168.625 Tone 110.9</p>	<p>What frequency or channel will the Incident Be run on?</p>
7.	<p><b><u>LZ Location / GPS/staging area for EMS</u></b></p> <p>Lat: _____ ° _____ ' , Long: _____ ° _____ ' _____</p> <p>Ground Contact: _____</p>	<p align="center"><b><u>LZ Area Selection Page 57, IRPG – 2010</u></b></p> <p>Set GPS on WGS -84 Use Degrees, Minutes, and Tenths of Minutes (Lat 00° 00.00 – Long 000° 00.000)</p>
8.	<p><b><u>LZ Special Hazards</u></b></p> <p>_____</p>	<p>Trees, power lines, wind direction, slope</p>
9.	<p><b><u>Patient Affiliation</u></b></p> <p>_____</p>	<p>Agency, Contractor, Military</p>