

Incident Action Plan



Day Operational Period

Tuesday

4/4/17

0800-2000

Cowbell Fire

FL-BCP-017033

PPKX14 (1502)

INCIDENT OBJECTIVES	1. Incident Name Cowbell Fire	2. Date Prepared 4/3/17	3. Time Prepared 1700
4. Operational Period 4/4/17 0800 - 2000			
5. General Control Objectives For The Incident <u>Objectives for the Incident:</u> <ul style="list-style-type: none"> • Protection of human life is top priority through the use of sound risk management decisions. • Protect private property and infrastructure, federal facilities, critical transportation corridors, recreational and cultural resource values, T&E species and their habitat (e.g. Florida Panther, Florida bonneted bat, Red-Cockaded Woodpecker), and wilderness values through coordination with READS and following MIST Tactics on current and all initial and extended attack fires. • Provide opportunities to communicate and educate the public on the role of fire in the BCP and FPR ecosystems through social media and other outlets. • Provide training opportunities for Preserve, State, and local federal fire agency personnel to actively enhance successional planning of future firefighting personnel. • Provide initial attack for Big Cypress National Preserve and Florida Panther Refuge. <u>Control Objectives:</u> <ul style="list-style-type: none"> • Keep fire west of the ADD17 between the junctions of ADD 20/ADD 17 and ADD 17/ADD 14, and south of the Big Cypress National Preserve's northern boundry to minimize impacts to high values including Seminole and Miccosukee tribal lands, Sanctuary community, and private land within and near to the boundaries of the Big Cypress National Preserve and Florida Panther Wildlife Refuge. • Minimize smoke impacts on I-75, State Road 29 and 41 in order to avoid safety threats to the public. • Utilize full suppression strategies and tactics that commit responders only to operations where and when they can be successful and under conditions where important values actually at risk are protected with the least exposure necessary while sustaining relationships with the people we serve. 			
6. Weather forecast for Period Light south to southwest winds will increase at mid-afternoon due to heating and sea breeze development. A frontal boundary will move into central Florida and stall north of the area. Isolated afternoon storms will be possible with a better rain chance developing early Thursday due to a stronger front approaching the area.			
7. General Safety Message Look up, look down, look all around for hazards, recognize them and mitigate them.			
8. ATTACHMENTS (X IF ATTACHED) <input checked="" type="checkbox"/> Organization List - ICS 203 <input checked="" type="checkbox"/> Medical Plan - ICS 206 [] _____ <input checked="" type="checkbox"/> Division Assignment Lists - ICS 204 <input checked="" type="checkbox"/> Incident Map [] _____ <input checked="" type="checkbox"/> Communications Plan - ICS 205 [] Traffic Plan [] _____			
9. Prepared By (Planning Section Chief) /s/ Dave Berens / Steve Moore		10. Approved By (Incident Commander) /s/ Marty Bentley	

ORGANIZATION ASSIGNMENT LIST		9.	Operations Section	
1. Incident Name COWBELL FIRE		Planning Operations		Steve Weaver, Paul Varnedoe (t)
		Field Operations		Greg Brooks, Mike Davis (t)
2. Date 04/03/17	3. Time 1700			
4. Operational Period 04/04/17 DAY (0800 – 2000)		a.		Divisions/Groups
		Division	A	Chad Cook, Heath Thomas (t)
5. Incident Commander and Staff		Division	G	E.J. Bunzendahl
Incident Commander	Steve Parrish, Lance Elmore (t)	Division	Z	Tom Crews
		Division	Initial Attack	Kelly Cagle
Deputy Incident Commander	Marty Bentley, Debbie Beard (t)	Division	Parliament & Misc Fires	UNSTAFFED
Liaison Officer	Mike Wright	Group	Structure Protection	Ryan Vice
Safety Officer	Buddy Kelley, Mark Sullivan, Ken Gordon (t)	Group	Firing	Mary Owen/Chris Richards (t)
Information Officer	Susie Heisey, Michelle Burnett, Donald Simon (t)			
6. Agency Reps				
Agency Administrator	J.D. Lee (Big Cypress)			
Chief of Fire & Aviation	Byron Hart (Big Cypress)			
Zone FMO	Cass Palmer (Panther)			
Collier Co. Sheriff	Lt. Jake Walker			
Dade Co. Sheriff	Mike Preston			
		b.		Air Operations Branch
		Air Operation Branch Director		Mike Rock
7. Planning Section		Air Support Group Supervisor		Pete Kubiak
Chief	Dave Berens, Steve Moore	Air Tactical Group Supervisor		Ken McLaughlin
Resources Unit	Melone Sellers, Jessica Hollingsworth (t)	Helibase Manager		Denise Croker
Situation Unit	Jeff DeMatteis, Carol O'Bryan (t)			
FBAN	Gary Jarvis	8. Logistics Section		
IMET	John Pendergrast	Chief		Willie Boston
Geo. Info. Spec.	Chris Evans, Melanie Hans, Jeff Adams (t)	Deputy		Jerry Jussila, Susan Cornett
Demob Unit	Thomas Barrett	Supply Unit		Tom Piper
Status Check-In	Jeff Turner	Facilities Unit		Tom Phillips, Glen Bee
Training	John Davis	Ground Support		Michael Howarth/Peter Lashoto
ITSS	Jerry Dronberger, Rusty Brown	Equipment Manager		
		Ordering Manager		Sherri Kite
10. Finance Section		Receiving & Distrib. Mgr.		Chris Combs
Chief	Wanda Kelley, Holly Cyprian (t)	Base Camp Manager		Mike Justus
Time Unit	Laura Wilson, Sherise Foster (t)	Communications Unit		George Rosenthal, Ron Regan
Equipment Time Unit	Donna Line (t)	Incident Communication Mgr.		
Cost Unit	Carolyn Hughes	Comm Tech		
Comp/Claims	Terri McDonald	Rado		
Procurement	Leslie Solberg	Medical Unit Leader		Gene-Paul Matson, James Fortner (t)
Personnel Time Recorder	Gustavo Vallejo (t)	Security		Sasha Herrin
Prepared by (RESL) /s/ Carol O'Bryan / Melonie Sellers / Jessica Hollingsworth (t)				



Fire Weather Forecast

FORECAST NO: 2 NAME OF FIRE: Cowbell Fire
 PREDICTION FOR: Tuesday Day Shift UNIT: Big Cypress National Preserve
 SHIFT DATE: April 4, 2017 Incident Meteorologist: *John Pendergrast*
 FORECAST ISSUED: 1900 April 3, 2017 240-499-6649

DISCUSSION: Light south to southwest winds will increase at mid-afternoon due to heating and sea breeze development. A frontal boundary will move into central Florida and stall north of the area. Isolated afternoon storms will be possible with a better rain chance developing early Thursday due to a stronger front approaching the area.

TODAY (TUESDAY DAY SHIFT):

WEATHER: Partly cloudy and warm. Isolated afternoon and evening thunderstorms.
 WIND (20 FT): Southwest 4 to 6 mph in the morning increasing to 10 mph in the afternoon.
 MAX TEMPERATURES: 89 to 91. Heat Indices 92 to 94.
 MIN RH: 47%.
 LAL: 2 Chance measurable rain: 20% (rain amounts a tenth an inch or less.)
 DISPERSION: 57 MAX MIXING HEIGHT 5500 TRANSPORT WINDS: Southwest 7 to 12 mph in afternoon

TONIGHT (TUESDAY NIGHT):

WEATHER: Partly cloudy with isolated showers early. Some patchy fog/haze in low spots toward daybreak.
 WIND (20 FT): South 2 to 4 mph.
 MIN TEMPERATURES: 67 TO 70F.
 MAX RH: 94 to 98%. LVORI 8 (max)
 LAL: 1 Chance measurable rain: less than 20% early.

WEDNESDAY:

WEATHER: Partly cloudy and warm. Isolated afternoon and evening thunderstorms.
 WIND (20 FT): South winds 5 to 10 mph becoming Southwest 10 to 15 mph late afternoon.
 MAX TEMPERATURES: 89 to 92F. Heat Indices 92 to 94.
 MIN RH: 48%.
 LAL: 2 Chance measurable rain: 20% (rain amounts up to a tenth of an inch in affected areas).
 DISPERSION: 55 MAX MIXING HEIGHT 5500 TRANSPORT WINDS South 12 to 16 mph in afternoon.

GENERAL OUTLOOK THURSDAY THROUGH SATURDAY: Showers and some thunderstorms are possible early Thursday ahead of an approaching cold front. The front is forecast to sweep through the area on Thursday bringing dryer conditions with Gusty NW winds into the weekend. Critical Fire weather conditions are expected Thursday into Saturday due to wind and low RH.

WEATHER: Mostly cloudy early Thu. 60 percent rain chance then clearing breezy and cooler. Mostly Sunny Fri and Sat.
 WIND (20 FT): Southwest early Thursday, becoming NW 15 to 20 mph after the front on Thursday. NW 10 to 15 Fri.
 MIN RH: 40 Percent Thu. 35 to 40 Percent Fri-Sat.



Current Incident
 area RAWS
 conditions

Sunrise Tue: 7:14 am
 Sunset Tue: 7:44 pm
 Moon First Qtr: 2:49 pm

Source: US Naval Observatory

FIRE BEHAVIOR FORECAST

FORECAST NUMBER: 02

TYPE OF FIRE: Wildland Fire

FIRE NAME: Cowbell

OPERATIONAL PERIOD: Tuesday April 4, 2017

DATE ISSUED: April 3rd, 2017

TIME ISSUED: 2000

UNIT: Big Cypress National Preserve

SIGNED: GaryWJarvis
Gary Jarvis FBAN

INPUTS

WEATHER SUMMARY:

WEATHER: Partly cloudy and warm. Isolated afternoon and evening thunderstorms.

WIND (20 FT): Southwest 4 to 6 mph in the morning increasing to 10 mph in the afternoon.

MAX TEMPERATURES: 89 to 91. Heat Indices 92 to 94.

MIN RH: 47%. LAL: 2

Chance measurable rain: 20% (rain amounts a tenth an inch or less.)

DISPERSION: 57 MAX MIXING HEIGHT 5500 TRANSPORT WINDS: Southwest 7 to 12 mph in afternoon

OUTPUTS

FIRE BEHAVIOR

GENERAL:

Primary fuels consist of grass (GR4,GR5), southern rough (SH8) and timber litter (TL8). Current fuel conditions are favorable for very active fire behavior within the grass and shrub fuels. The current drought conditions have led to both live and dead fuel moistures to reach areas of concern. Expect all fuels to burn readily, including those that appear green.

Calculated 1 hour fuel moisture: 7%

Forecasted 10 hour fuel moisture: 10% **Forecasted 100 hour fuel moisture:** 13-15%

Estimated Live Fuel Moistures: Herbaceous: 84% **Woody:** 100%

Probability of Ignition: 52% with no shading

Expected Fire Behavior:

Grass – ROS 23-47 ch/hr with flame lengths 5-7 ft. **Timber Understory/Shrub** – ROS 14-25 ch/hr with flame lengths 8-11 ft

Spotting – up to ¼ mile

Local Thresholds: Eye Level winds over 10 mph, RH below 50% and a Dispersion Index above 60

If thunderstorms develop, fuels affected by gusty outflow winds may produce erratic fire behavior. Rates of spread and flames lengths listed above can easily double!!

SPECIFIC:

Cowbell Fire – A southerly wind flow will continue to push the fire to the north. Expect increased fire activity today, any rain received over past two days has evaporated. Weather should be favorable for burnout conditions.

Initial Attack: Moderate to heavy resistance can be expected on any new starts in the grass/brush fuels. Expect rapid rates of spread, especially in the grass models and anticipate some spotting to challenge your control efforts.

AIR OPERATIONS: Be cautious of isolated afternoon and evening thunderstorms. Communicate with ground resources if approaching thunderstorms moves across fire area.

SAFETY

Standard Firefighting Order # 2 is key today: **Know what your fire is doing at all times.** Although this fire has exhibited little activity in recent days, it is not out. Smoldering and creeping fire behavior can quickly transition to running and spotting. Remain alert for these and other potentially hazardous phenomena.

Division/Group Assignment List (ICS 204 WF)

1. Incident Name:		3.				
Cowbell Fire		Branch:		Division/Group		
2. Operational Period:				A		
Date/Time From:	Date/Time To:					
04/04/17 0800	04/04/17 2000					
4. Operations Personnel						
AIR ATTACK SUPERVISOR			FIELD OPERATIONS		Greg Brooks/Mike Davis (t)	
DIVISION/GROUP SUPERVISOR	Chad Cook Heath Thomas (t)		PLANNING OPERATIONS		Steve Weaver Paul Varnedoe (t)	
5. Resources Assigned this Period						
Strike Team / Task Force / Resource Designator	LWD	Leader	Number Persons	Drop Off PT./Time	Pick Up PT./Time	
MOD Ashley		Ben Sanders	8			
MOD Great Smoky	O-70	Josh Nicholas	8			
Transport Buggy	E-16	Captain Steve	1			
Transport Buggy	E-17	Captain Steve	1			
Transport Buggy	E-18	Captain Steve	1			
EMTF		Tracy Milakovic	1			
SOFR		Joe Fowler	1			
6. Control Operations/Work Assignments:						
Task:						
<ul style="list-style-type: none"> Anchor suppression work at fire perimeter on ADD 17/14 intersection Patrol and conduct mop up, as appropriate Coordinate with firing group to conduct strategic firing operations northerly along ADD 17 to minimize fire impacts Coordinate with Div Z on triage of hunt camps for point protection 						
Purpose:						
<ul style="list-style-type: none"> To keep fire confined and contained north and west of ADD 17 To protect hunt camp structures 						
End State:						
<ul style="list-style-type: none"> Control fire perimeter north and west of ADD 17 to eliminate threat to sanctuary area structures 						
7. Special Instructions:						
8. Division/Group Communication Summary						
Function	Channel	RX Frequency N/W	RXTone/NAC	TX Frequency N/W	TX Tone/NAC	Mode
COMMAND	7	164.6250	1188	163.1500	1188	D
TACTICAL	4	168.6000		168.6000		A
AIR TO GROUND	10	168.3250		168.3250		A
9. Prepared By (Resource Unit Leader)		Approved By (Planning Section Chief)			Date	Time
/s/M. Sellers/C.O'Bryan/J.Hollingsworth (t)		Dave Berens/Steve Moore			04/03/17	13:00

Division/Group Assignment List (ICS 204 WF)

1. Incident Name:			3.				
Cowbell Fire			Branch:		Division/Group		
2. Operational Period:					G		
Date/Time From: 04/04/17 0800	Date/Time To: 04/04/17 2000						
4. Operations Personnel							
AIR ATTACK SUPERVISOR			FIELD OPERATIONS		Greg Brooks/Mike Davis (t)		
DIVISION/GROUP SUPERVISOR	E.J. Bunzendahl		PLANNING OPERATIONS		Steve Weaver Paul Varnedoe (t)		
5. Resources Assigned this Period							
Strike Team / Task Force / Resource Designator	LWD	Leader		Number Persons	Drop Off PT./Time	Pick Up PT./Time	
Masticator	E-6	Mike Joel		O-34	1		
HEQB	O-25	Eric Moore		O-25	1		
6. Control Operations/Work Assignments:							
Task:							
<ul style="list-style-type: none"> Begin vegetative mastication on ADD 14 Continue assessing presuppression work on DIV G 							
Purpose:							
<ul style="list-style-type: none"> To keep fire contained south and west of ADD 17 and ADD 14 							
End State:							
<ul style="list-style-type: none"> Confine fire perimeter north and west to reduce threats to resource values at risk 							
7. Special Instructions:							
8. Division/Group Communication Summary							
Function	Channel	RX Frequency N/W	RXTone/NAC	TX Frequency N/W	TX Tone/NAC	Mode	
COMMAND	7	164.6250	1188	163.1500	1188	D	
TACTICAL	5	168.2500		168.2500		A	
AIR TO GROUND	10	168.3250		168.3250		A	
9. Prepared By (Resource Unit Leader)			Approved By (Planning Section Chief)			Date	Time
/s/M.Sellers/C.O'Bryan/J.Hollingsworth(t)			Dave Berens/Steve Moore			04/03/17	13:00

Division/Group Assignment List (ICS 204 WF)

1. Incident Name:		3.				
Cowbell Fire		Branch:	Division/Group			
2. Operational Period:			Z			
Date/Time From: 04/04/17 0800	Date/Time To: 04/04/17 2000					
4. Operations Personnel						
AIR ATTACK SUPERVISOR		FIELD OPERATIONS	Greg Brooks/Mike Davis (t)			
DIVISION/GROUP SUPERVISOR	Tom Crews	PLANNING OPERATIONS	Steve Weaver Paul Varnedoe (t)			
5. Resources Assigned this Period						
Strike Team / Task Force / Resource Designator	LWD	Leader	Number Persons	Drop Off PT./Time	Pick Up PT./Time	
HC2IA Colorado BLM	C-3	Ian Barrett	20			
MOD Buffalo	O-21	Josh Hampton	6			
EMTF		Jim Stout	1			
6. Control Operations/Work Assignments:						
Task:						
<ul style="list-style-type: none"> Continue suppression work at fire perimeter from Div A break Complete triage of hunt camp structures in Div Z and Div A for point protection Utilize perimeter trail for firing operations north and east Disk fence line boundary 						
Purpose:						
<ul style="list-style-type: none"> To keep fire confined and contained south and east of ADD 17 To protect hunt camp structures 						
End State:						
<ul style="list-style-type: none"> Control fire perimeter south and east of ADD 17 to eliminate threat to Seminole Nation Lands and Ceremonial Area 						
7. Special Instructions:						
8. Division/Group Communication Summary						
Function	Channel	RX Frequency N/W	RXTone/NAC	TX Frequency N/W	TX Tone/NAC	Mode
COMMAND	7	164.6250	1188	163.1500	1188	D
TACTICAL	8	166.7500		166.7500		A
AIR TO GROUND	10	168.3250		168.325		A
9. Prepared By (Resource Unit Leader)		Approved By (Planning Section Chief)		Date	Time	
/s/M. Sellers/C.O'Bryan/J.Hollingsworth(t)		Dave Berens/Steve Moore		04/03/17	13:00	

Division/Group Assignment List (ICS 204 WF)

1. Incident Name:			3.			
Cowbell Fire			Branch:		Division/Group	
2. Operational Period:					IA	
Date/Time From: 04/04/17 0800	Date/Time To: 04/04/17 2000					
4. Operations Personnel						
AIR ATTACK SUPERVISOR				FIELD OPERATIONS	Greg Brooks/Mike Davis (t)	
DIVISION/GROUP SUPERVISOR		Kelly Cagle		PLANNING OPERATIONS	Steve Weaver Paul Varnedoe (t)	
5. Resources Assigned this Period						
Strike Team / Task Force / Resource Designator		LWD	Leader	Number Persons	Drop Off PT./Time	Pick Up PT./Time
HC1 Midewin C-2			Logan Blankenship	18		
ENG6 K31 E-7			Steven Staples	2		
ENG6 #602 (local)						
Duece Buggy IA			Lucas Hunkler	2		
EMTF			Bob Bruington	1		
6. Control Operations/Work Assignments:						
Task:						
<ul style="list-style-type: none"> • Coordinate with BICY duty officer for notification of newly reported ignitions • Coordinate initial attack action with assigned aviation and /or ground assets • Determine IA resource prepositioning needs across BICY and FPWR 						
Purpose:						
<ul style="list-style-type: none"> • Ensure communications with FL Hwy Patrol regarding smoke on I-75 • Ensure timely response on any IA within BICY and FPWR 						
End State:						
<ul style="list-style-type: none"> • Protect human life • Minimize environment damage to protect habitat of threatened and endangered species • Minimize damage to public and private property 						
7. Special Instructions:						
8. Division/Group Communication Summary						
Function	Channel	RX Frequency N/W	RX Tone/NAC	TX Frequency N/W	TX Tone/NAC	Mode
COMMAND	7	164.6250	1188	163.1500	1188	D
TACTICAL	9	166.8250		166.8250		A
AIR TO GROUND	6	169.1125		169.1125		A
9. Prepared By (Resource Unit Leader)		Approved By (Planning Section Chief)			Date	Time
/s/M. Sellers/C.O'Bryan/J.Hollingsworth(t)		Dave Berens/Steve Moore			04/03/17	13:00

Division/Group Assignment List (ICS 204 WF)

1. Incident Name:		3.				
Cowbell Fire		Branch:	Division/Group Parliament/ Misc Fire Patrol			
2. Operational Period:						
Date/Time From: 04/04/17 0800	Date/Time To: 04/04/17 2000					
4. Operations Personnel						
AIR ATTACK SUPERVISOR		FIELD OPERATIONS	Greg Brooks/Mike Davis (t)			
DIVISION/GROUP SUPERVISOR		PLANNING OPERATIONS	Steve Weaver Paul Varnedoe (t)			
5. Resources Assigned this Period						
Strike Team / Task Force / Resource Designator	LWD	Leader	Number Persons	Drop Off PT./Time	Pick Up PT./Time	
unstaffed						
6. Control Operations/Work Assignments:						
Task:						
<ul style="list-style-type: none"> Patrol and monitor fires on BICY and FPWR with aviation and ground assets as directed by lead OSC Commensurate with values at risk Monitor fires for further suppression management action 						
Purpose:						
<ul style="list-style-type: none"> Assure suppression action taken limits environmental impact, consistent with MIST tactics 						
End State:						
<ul style="list-style-type: none"> Protect human life Minimize damage to public and private property Minimize environmental damage to protect habitat of threatened and endangered species 						
7. Special Instructions:						
<ul style="list-style-type: none"> 						
8. Division/Group Communication Summary						
Function	Channel	RX Frequency N/W	RXTone/NAC	TX Frequency N/W	TX Tone/NAC	Mode
COMMAND	7	164.6250	1188	163.1500	1188	D
TACTICAL	11	166.7250	0659	166.7250	0659	D
AIR TO GROUND	10	168.3250		168.3250		A
9. Prepared By (Resource Unit Leader)		Approved By (Planning Section Chief)			Date	Time
/s/M. Sellers/C.O'Bryan/J.Hollingsworth(t)		Dave Berens/Steve Moore			04/03/17	13:00

Division/Group Assignment List (ICS 204 WF)

1. Incident Name:			3.			
Cowbell Fire			Branch:		Division/Group Structure Protection Group	
2. Operational Period:						
Date/Time From: 04/04/17 0800			Date/Time To: 04/04/17 2000			
4. Operations Personnel						
AIR ATTACK SUPERVISOR				FIELD OPERATIONS	Greg Brooks/Mike Davis (t)	
DIVISION/GROUP SUPERVISOR		Ryan Vice		PLANNING OPERATIONS	Steve Weaver Paul Varnedoe (t)	
5. Resources Assigned this Period						
Strike Team / Task Force / Resource Designator		LWD	Leader	Number Persons	Drop Off PT./Time	Pick Up PT./Time
MOD BIFZ #2		O-92	Brett Morefield	10		
ENG6 WFS		E-8	Dave Sechrist	3		
ENG6 WFS		E-9	Saul Irvin	3		
ENG6 Attack One		E-10	Wes Coleman	2		
STSP			Glenn Phillips	1		
EMTF			Matt Lancaster	1		
6. Control Operations/Work Assignments:						
Task:						
<ul style="list-style-type: none"> Assess contact procedures with Collier County EMS and Sheriff Dept to assure smooth communication in event of community evacuation needs Evaluate Sanctuary community and hunt camp area in DIV A and Div Z area to complete structure protection plan Coordinate with landowners to determine special considerations and road or trail access 						
Purpose:						
<ul style="list-style-type: none"> Ensure timely response to protect human life, property and access 						
End State:						
<ul style="list-style-type: none"> Maintain communications with appropriate county emergency management and law enforcement agencies to complete timely evacuations 						
7. Special Instructions:						
8. Division/Group Communication Summary						
Function	Channel	RX Frequency N/W	RXTone/NAC	TX Frequency N/W	TX Tone/NAC	Mode
COMMAND	7	164.6250	1188	163.1500	1188	D
TACTICAL	11	166.7250	0659	166.7250	0659	D
AIR TO GROUND	10	168.3250		168.3250		A
9. Prepared By (Resource Unit Leader)		Approved By (Planning Section Chief)			Date	Time
/s/M. Sellers/C.O'Bryan/J.Hollingsworth(t)		Dave Berens/Steve Moore			04/03/17	13:00

Division/Group Assignment List (ICS 204 WF)

1. Incident Name:		3.				
Cowbell Fire		Branch:	Division/Group Firing Group			
2. Operational Period:						
Date/Time From: 04/04/17 0800	Date/Time To: 04/04/17 2000					
4. Operations Personnel						
AIR ATTACK SUPERVISOR		FIELD OPERATIONS	Greg Brooks/Mike Davis (t)			
DIVISION/GROUP SUPERVISOR	Mary Owen Chris Richards (t)	PLANNING OPERATIONS	Steve Weaver Paul Varnedoe (t)			
5. Resources Assigned this Period						
Strike Team / Task Force / Resource Designator	LWD	Leader	Number Persons	Drop Off PT./Time	Pick Up PT./Time	
Aerial Ignition		Adam Kunce	1			
Slimmer Buggy IA		April Deming	3			
Seminole Buggy IA		Mike Lightsey	2			
BICY Buggy #2 IA		Justin Phippen	1			
BICY Buggy #3 IA		Sam Ashbaugh	2			
6. Control Operations/Work Assignments:						
Task:						
<ul style="list-style-type: none"> Continue strategic firing operations as coordinated with DIV A 						
Purpose:						
<ul style="list-style-type: none"> No intent to complete a large scale burnout, instead a purposeful firing operation to confine and contain the fire along ADD 17 thru DIV A to DIV Z Complete point protection techniques around hunt camps in DIV Firing Group and DIV Z 						
End State:						
<ul style="list-style-type: none"> Keep fire north and west of ADD 17 to protect Sanctuary Community and Ceremonial and Tribal Lands 						
7. Special Instructions:						
8. Division/Group Communication Summary						
Function	Channel	RX Frequency N/W	RXTone/NAC	TX Frequency N/W	TX Tone/NAC	Mode
COMMAND	7	164.6250	1188	163.1500	1188	D
TACTICAL	4	168.6000		166.6000		A
AIR TO GROUND	10	168.3250		168.3250		A
9. Prepared By (Resource Unit Leader)		Approved By (Planning Section Chief)		Date	Time	
/s/M. Sellers/C.O'Bryan/J.Hollingsworth (t)		Dave Berens/Steve Moore		04/03/17	13:00	

AIR OPERATIONS SUMMARY

OPERATIONAL PERIOD DATE: 04-04-17

0900-2000

1. INCIDENT NAME: Cowbell	2. PREPARED BY: Mike Rock	PREPARED DATE/TIME: 04/03/2017 1730	3. Sunrise: 0715 Sunset: 1946
4. REMARKS (Safety Notes, Hazards, Air Operations Special Equipment,, etc.): Medivac Aircraft: 5HQ MTR- Located along state road 29.Fire Dispatch gets MTR activity every morning Do not over fly structures with external load missions. All aircraft should use strobes and running lights in smoky conditions. Hazards: Snags, non-incident aircraft, and winds. Contract helicopter working special use permit in North Central portion of BICY. Area identified on pilot briefing board. ATGS has air to air communications.			5. Squawk 1255 TFR—7/4656 ZMA FL, Airspace 25 nm NE of Ochopee

6. PERSONNEL	Phone	7. FREQUENCIES	AM	FM	8. FIXEDWING	Base
AOBD: Mike Rock ASGS: Pete Kubiak	606-813-9750 404-661-4819	Air/Air Rotor	123.575		Bravo 04- T-801 T-819 Air Attack	ASM--Marco Island Seat –IMM, Start 0900 Seat—IMM, Start 0900 4566M- Baron- eta 1300 MKY
ATGS: Ken McLaughlin	813-997-0317	Air/Air Fixed Wing	118.825			
<u>Oasis Helibase (9FL7)</u>	239-695-0278	Air/Ground Cowbell		168.3250 RX/TX (A)		
HEB2: Denise Croker HEB (t) Mike Roof Seat Manager – Keith Olive Seat Manager – Jack Benzilio	770-548-8092 801-503-7851	Air/Ground IA		169.1125 RX/TX (A)		
Big Cypress Fire Dispatch	239-695-9280 x 104	Flight Following (BICY)		169.7250 RX (D) NAC (Hex: 5EA) (Dec: 1514)		
		Air/Guard		168.6250 RX/TX Tone 110.9		
		Deck		166.7750		

9. HELICOPTERS (Use Additional Sheets As Necessary)

FAA N# or Designator	TY	MAKE/MODEL	BASE	START	REMARKS	FAA N# or Designator	TY	MAKE/MODEL	BASE	START	REMARKS
206RW	3	Bell 206	Oasis	0900	Park Helicopter	1KA	1	K-MAX	Oasis	0900	Bucket
0HH	3	Bell 206	Oasis/RON-Miami	0900	Recon / Bucket	61CK	1	S-61	Oasis	0900	Tanked
5HQ	2	Bell 205++	Oasis	0900	Crew/ Bucket						
6HX	2	Bell 205	Oasis	0900	Crew/Bucket						

10. TASK/MISSION/ASSIGNMENT (Use ICS-220a if additional space needed; Type/Function includes: Air Tactical, Retardant, Recon, Personnel Transport, Water Dropping, etc.)

TYPE/FUNCTION	NAME OF PERSONNEL OR CARGO (if applicable) OR INSTRUCTIONS FOR TACTICAL AIRCRAFT	MISSION START	FLY FROM	FLY TO
Mapping	As Requested	0930		
Reconnaissance	As Requested	0930		
Water Drops	As Requested	0930		

HEALTH AND SAFETY MESSAGE

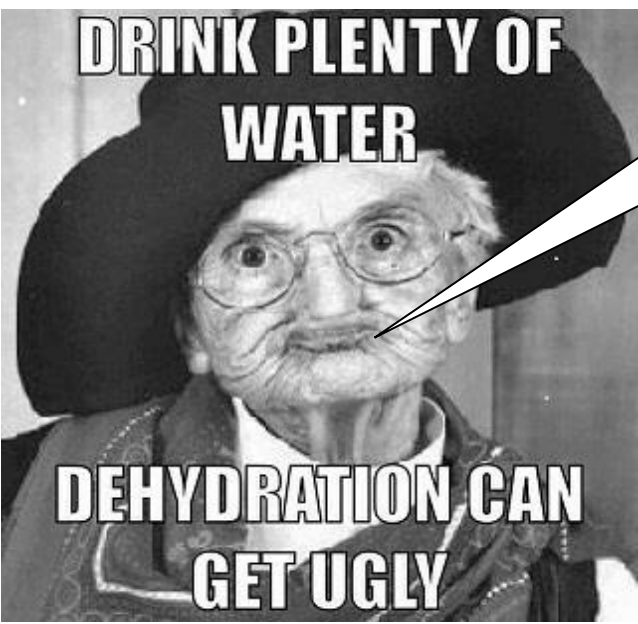
SAFETY is YOU & ME

We are **ALL** accountable for **SAFE** behaviors

INCIDENT: Cowbell Fire	DATE: April 4, 2017
-------------------------------	----------------------------

Major Hazards and Risks: Heat-Related Injuries

Heat-Related Injuries: occur because of how you have taken care of yourself on and off the fireline. Staying hydrated, taking breaks as needed and getting plenty of rest will greatly reduce your chances of having one.



DON'T LET THIS HAPPEN TO YOU!

Heat-Related Injuries – Heat-related injuries (heat cramps, heat exhaustion, and heat stroke) are most likely to occur when it's hot and humid

Heat Cramps – Signs/Symptoms: Sweating, dehydration, muscle cramps

Heat Exhaustion – Signs/Symptoms: Profuse sweating, cool clammy skin, dehydration, persistent muscle cramps, dizziness, headache

Heat Stroke – Signs/Symptoms: Hot dry skin, Rapid but weak pulse, Hyperventilation, vomiting, dizziness, confusion, seizures or loss of consciousness. **This is a medical emergency.**

Remember:

Driving – Obey all state and local traffic laws AT ALL TIMES. Wear safety belts and run headlights when travelling on the incident. The **NIGHT TIME speed limit of 45 mph** on Highway 41 and Highway 29, are for the protection of the Florida panthers, other wildlife and your safety, **RESPECT IT!! {YOU WILL BE TICKETED IF CAUGHT SPEEDING}**

Snags – Do not fall snags on the intended unburned side of the constructed fireline, unless they are an obvious safety hazard to crews working in the vicinity. On the intended burnout side of the line, fall only those snags that would reach the fireline should they burn and fall over, or are an obvious safety hazard to crews working in the vicinity. {Reference the “Big Cypress National Preserve-Wildlife Incident Plan” for additional minimum suppression tactics.}

At all times safety is the top priority and you should maintain situation awareness and be aware of forecasted winds, dead & broken or burning tops and limbs. IRPG pp. 22-23.

Safety Officers: Ken Gordon(t), Buddy Kelly, Mark Sullivan

INCIDENT SAFETY ANALYSIS 215a

Cowbell Fire - Tuesday, April 04, 2017

8. Location	9. Hazard	6. Control or Abatement Action (Engineering, Administrative, PPE, Avoidance, Education, etc)
DIVS ALL & IA	Hazard Trees	<ul style="list-style-type: none"> ~ Avoid cutting Hazard Trees, unless they are an obvious Safety Hazard to crews in the vicinity (Reference the "Big Cypress National Preserve - Wilfire Incident Resource Protection Plan") ~ Follow "Hazard Tree Safety" guidelines, IRPG page 22. ~ Post lookouts, or use a spotter in mop-up areas with personnel. ~ Don't park vehicles or take breaks in high concentrations of hazard trees. ~ Establish trigger points for disengagement during high wind events. ~ Remember that the hazard zone extends a minimum of 2 1/2 tree heights.
DIVS ALL & IA	Helicopter Operations	<ul style="list-style-type: none"> ~ Stay clear of all bucket drops when suppression actions are in place and allow 1 minute prior to re-entry. ~ Monitor Air-Ground communications. ~ Follow aviation safety guidelines in IRPG and IHOG.
DIVS ALL & IA	Injury & Medical Emergency	<ul style="list-style-type: none"> ~ For "IWI" use 9 line procedures ~ For "air hoist capability" or "snake bite treatment" contact Big Cypress Communications to request "Miami-Dade Air Rescue" for assistance. ~ Assist injured employee with appropriate medical care. ~ Use EMT's on Division for initial care. ~ Follow medical protocol as outlined in ICS-206 & IRPG Pgs 99-108
DIVS ALL & IA	Driving & Traffic	<ul style="list-style-type: none"> ~ Practice "Defensive Driving" techniques traveling on all roads and city streets. ~ Use spotters when backing. ~ Honk horn to alert personnel when backing. ~ Keep clutter off dash and inside cab. ~ Follow Driving LCES (Lights, Chock blocks, Emergency brake, Seat belts. ~ Always use headlights. ~ Yield to pedestrians and bicycles. ~ Observe posted speed limits. ~ Use the 3 second rule for following distance when driving. ~ Use chock blocks, turn wheels into hill. ~ Avoid distractions (eating, cell phones, radio). ~ Ensure that windshields are kept clean of dust and bugs.
DIVS ALL & IA	Chain Saw Operations	<ul style="list-style-type: none"> ~ Follow "Hazard Tree Safety" guidelines, IRPG page 22 ~ Look up, Look down, Look around for hazard tree indicators. ~ Only fell and buck trees within your expertise, and training. ~ Follow "Procedural Felling Operations" on page 79 in IRPG. ~ Do not fall trees during high wind events. ~ Ensure proper use of all required PPE.
DIVS ALL & IA	Firing Operations & Devices	<ul style="list-style-type: none"> ~ Only personnel trained in the use of each device will be authorized to use firing equipment. ~ Ensure all personnel are aware of firing operation that may affect them. ~ Wear appropriate PPE. ~ Ensure aerial/ground ignition plans have been adequately developed and personnel are briefed.
DIVS ALL & IA	Vehicle Operations in Inclement Weather	<ul style="list-style-type: none"> ~ Be alert for potential muddy and slick road surfaces. ~ Avoid parking on soft shoulders along roads. ~ Stay off secondary roads in wet conditions. ~ Increase following distance on slick road surfaces. ~ Send a scout to evaluate roads and work area prior to personnel engagement.
DIVS ALL & IA	Fatigue & Over Exertion	<ul style="list-style-type: none"> ~ Drink 1 quart of water each hour during and after work. ~ Rotate crews out of smokey areas. ~ Set a reasonable work pace and allow adequate rest breaks while on the project. ~ Stagger work crews start time to limit fatigue. ~ Use buddy system to monitor personnel of heat related and fatigue issues. ~ Follow work / rest guidelines.

INCIDENT SAFETY ANALYSIS 215a

DIVS G & Z	Heavy Equipment Operations	<ul style="list-style-type: none"> ~ Ensure communications are established with operators. ~ Use hand signals if other communications are unavailable. ~ Maintain a 50'-100' exclusion area around equipment and increase it to 1 1/2 times tree height when in timber. ~ Use a spotter when backing. ~ Avoid working below heavy equipment.
DIVS ALL & IA	Communications	<ul style="list-style-type: none"> ~ Maintain communication with aviation resources, and suppression organization. ~ Ensure all know frequency and protocol for contacting resources. ~ Utilize the ICS 205. ~ Utilize human repeaters when working in dead spots.
DIVS ALL & IA	Wildlife	<ul style="list-style-type: none"> ~ Watch out for wildlife such as alligators, bear, deer, panthers, snakes ~ Do not feed, handle or taunt wildlife ~ Maintain safe distance and avoid contact ~Discard trash (food and containers) in proper disposal sites ~ Secure pump location sites, watch for alligators, snakes and other wildlife
DIVS ALL & IA	Swamp Buggy	<ul style="list-style-type: none"> ~ Ensure equipment is inspected and safe to use ~ Restrict Buggy use to established trails ~ Ensure operator is trained and certified to operate ~ Ensure operator has proper PPE ~ Passengers wear hardhats & use 3 points of contact when loading or unloading ~ Secure all seating so is stable and does not move
DIVS ALL & IA	ATV/UTV use	<ul style="list-style-type: none"> ~ Ensure equipment is inspected and safe to use. ~ Restrict UTV's to max width of 50" on ATV trails due to width and severe out sloped conditions. ~ Ensure operator is trained and certified to operate. ~ Ensure operator has proper PPE according to the Redbook and/or RMA. ~ Question if it is mission critical.
DIVS ALL & IA	Unburned Area/Reburn Potential	<ul style="list-style-type: none"> ~ Monitor weather. ~ Base actions upon observed and predicted fire behavior. ~ LCES Checklist (IRPG pg. 6). ~ Look Up, Down and Around (IRPG pg. 2-3).
DIVS ALL & IA	Extreme Fire Behavior	<ul style="list-style-type: none"> ~ Share weather observations with all personnel assigned to division. ~ Establish "Trigger Points" to withdraw. ~ Use "Risk Management" process prior to engaging in suppression actions, refer to page 1, IRPG.
DIVS ALL & IA	Firefighter & Public Smoke Exposure	<ul style="list-style-type: none"> ~ Identify homes and structures with private parties remaining behind the evacuation. ~ Identify personnel responsible for contacting private parties. ~ Use warning lights and provide traffic control on roadways during smoky and night operations. ~ Rotate crews out of smokey areas during firing and mop-up operations. ~ Contact Communications when firing operations are initiated.
DIVS A & Z	Structure Protection & HAZMAT	<ul style="list-style-type: none"> ~ Review "Wildland Urban Interface" Watch outs, IRPG page 12. ~ Use "Structure Assessment" checklist, IRPG pages 12-16. ~ Follow "HAZMAT Incident Operations" on pages 34-36 in IRPG.
DIVS ALL & IA	Unplanned Public Interaction	<ul style="list-style-type: none"> ~ Be alert to non-fire personnel in areas with suppression personnel. ~ All non-fire personnel will be escorted while on fireline. ~ Post lookouts in areas with public to avoid conflicts with mission tasks. ~ Ensure sufficient security to restrict access to exclusion area.

MEDICAL PLAN (ICS 206)

1. Incident Name: CowBell Fire	2. Operational Period: Date From: 04-04-17 Date To: 04-04-17 Time From: 0800 Time To: 2000
--	--

3. Medical Aid Stations:				
Name	Location	Contact Number(s)/Frequency	Paramedics on Site?	
Gene-Paul Matson EMTF, MEDL	Medical ICP	434-665-0444	<input checked="" type="checkbox"/> Yes	<input type="checkbox"/> No
James Fortner EMTF, MEDL T	Medical ICP	202-236-3139	<input type="checkbox"/> Yes	<input checked="" type="checkbox"/> No
Jim Stout	Div Z	480-296-1566	<input checked="" type="checkbox"/> Yes	<input type="checkbox"/> No
Bob Bruington	IA	801-782-3585	<input type="checkbox"/> Yes	<input checked="" type="checkbox"/> No
Tracy Milakovic	Div A	719-850-0022	<input type="checkbox"/> Yes	<input checked="" type="checkbox"/> No
Matt Lancaster	Structure Protection Group	303-870-5248	<input type="checkbox"/> Yes	<input checked="" type="checkbox"/> No

4. Transportation (indicate air or ground):				
Ambulance Service	Location	Contact Number(s)/Frequency	Level of Service	
Collier County EMS (ground)	Everglades City (Medic 61)	911	<input checked="" type="checkbox"/> ALS	<input type="checkbox"/> BLS
Collier County Med-Flight (air)	Naples Airport	911	<input checked="" type="checkbox"/> ALS	<input type="checkbox"/> BLS
5HQ Bell 205 (air) internal short haul only	Oasis Heli-base	168.3250 (A/G 85)	<input type="checkbox"/> ALS	<input checked="" type="checkbox"/> BLS
			<input type="checkbox"/> ALS	<input type="checkbox"/> BLS

5. Hospitals:							
Hospital Name	Address	Contact Number(s)	Travel Time		Trauma Center	Burn Center	Helipad
			Air	Ground			
Physicians Regional Collier Blvd	8300 Collier Blvd. Naples, FL 34114 Lat:26°6'18.7884"/Long: -81°41'6.3486"	239-354-6000 (Main) 239-354-6190 (ER)	15	50	<input type="checkbox"/> Yes Level: _____	<input type="checkbox"/> Yes <input checked="" type="checkbox"/> No	<input checked="" type="checkbox"/> Yes <input type="checkbox"/> No
Physicians Regional Pine Ridge	6101 Pine Ridge Road, Naples 34119 Lat:26°12'49.9752"/Long: -81°43'57.2592"	239-348-4000 (Main) 239-304-4748 (ER)	15	50	<input type="checkbox"/> Yes Level: _____	<input type="checkbox"/> Yes <input checked="" type="checkbox"/> No	<input checked="" type="checkbox"/> Yes <input type="checkbox"/> No
Naples Community Hospital	350 7 th Street North, Naples 34102 Lat:26°9'2.7498"/Long: -81°47'54.4164"	239-513-7709 (Main) 239-436-5151 (ER)	15	60	<input checked="" type="checkbox"/> Yes Level: <u>2</u>	<input type="checkbox"/> Yes <input checked="" type="checkbox"/> No	<input checked="" type="checkbox"/> Yes <input type="checkbox"/> No
Jackson Memorial Hospital	1611 NW 12 Avenue, Miami Lat:26°12'49.9752"/Long: -81°43'57.2592"	305-585-1111 (Main) 305-585-6910 (ER)	20	60	<input checked="" type="checkbox"/> Yes Level: <u>1</u>	<input checked="" type="checkbox"/> Yes <input type="checkbox"/> No	<input checked="" type="checkbox"/> Yes <input type="checkbox"/> No
Kendal Regional Medical Center	11750 SW 40 th St., Miami 33175 Lat:25°43'54.951"/Long: -80°23'8.8722"	305-223-3000 (Main) 305-227-5544 (ER)	20	50	<input checked="" type="checkbox"/> Yes Level: <u>1</u>	<input type="checkbox"/> Yes <input checked="" type="checkbox"/> No	<input checked="" type="checkbox"/> Yes <input type="checkbox"/> No

6. Special Medical Emergency Procedures:
<ul style="list-style-type: none"> Patient or nearest responder notifies Group Supervisor who will respond to the scene and become the "incident within an incident" (IWI) commander. Group Supervisor will notify nearest medical responder and ICP-Communications of the incident and "Nine Line" report attached to this 206 or page 108 of the IRPG. <p>Call Big Cypress Communications if it is determined that air hoist capability or snake bite treatment is required. Miami-Dade Air Rescue will be used for an air hoist rescue and also for snake bite treatment. Communications will advise the 911 dispatcher for the helicopter to communicate through Big Cypress Dispatch.</p> <p>Note: If possible, give coordinates in aviation format – Degrees, Decimal, Minutes</p> <p><input type="checkbox"/> Check box if aviation assets are utilized for rescue. If assets are used, coordinate with Air Operations.</p>

7. Prepared by (Medical Unit Leader): Name: Gene-Paul Matson/James P. Fortner(T) Signature: <i>James P. Fortner</i>
8. Approved by (Safety Officer): Name: _____ Signature: _____

ICS 206	IAP Page _____	Date/Time: _____
---------	----------------	------------------

INCIDENT RADIO COMMUNICATIONS PLAN (ICS 205)

3. Operational Period: DAY

Date/Time From: 04/04/2017 0800	Date/Time To: 04/04/2017 2000
---	---------------------------------------

Zone Group	Ch #	Function	Assignment	RX Freq	RX Tone/NAC	TX Freq	TX Tone/NAC	Mode (A,D, or M)	Remarks
	1	CARNS RPT		172.4250	1035	170.1000	1035	D	Talk Group 1
	2	OASIS RPT	ALL DIVISIONS	172.4250	1035	171.6250	1035	D	Talk Group 1
	3	BCY LCL		166.7750	No Tone	166.7750	No Tone	A	
	4	BICY TAC 1		168.6000	No Tone	168.6000	No Tone	A	
	5	BICY TAC 2		168.2500	No Tone	168.2500	No Tone	A	
	6	A/G 59	I/A	169.1125	No Tone	169.1125	No Tone	A	
	7	Panther RPT	ALL DIVISIONS	164.6250	1188	163.1500	1188	D	Talk Group 1
	8	PANTHER TAC 1	DIVISION Z	166.7500	No Tone	166.7500	No Tone	A	
	9	PANTHER TAC 2	Initial Attack	166.8250	No Tone	166.8250	No Tone	A	
	10	A/G 85	All Divisions	168.3250	No Tone	168.3250	No Tone	A	
	11	Everglades TAC 1	Structure Protection / Parliament Misc.	166.7250	0659	166.7250	0659	D	
	12	A/G 44		167.6250	No Tone	167.6250	No Tone	A	
	13	CMD 13		168.7000	No Tone	170.9750	110.9	A	
	14	A/G	All Divisions	167.9500	No Tone	167.9500	No Tone	A	
	15	BCYFLTRP	All Divisions	169.7250	1514	163.3875	1738	D	
	16	AIR GUARD		168.6250	No Tone	168.6250	110.9		

Name: GEORGE ROSENTHAL	Signature: /s/ George Rosenthal
	Date/Time: 04/03/2017 1930



To: All Incident Personnel, Cowbell Fire

As Southern Area Type II Incident Commander, I am committed to a policy of “zero tolerance” of inappropriate behavior during incident operations. Any form of harassment, discriminatory practices, or disrespectful behavior will not be tolerated. Known or reported acts will be dealt with appropriately.

I am particularly concerned about the perception that alcohol has a place in any of the Incident facilities. It is not appropriate to indulge in alcoholic beverages during any fire assignment.

The Teams from the Southern Region have a team expectation of “NO ALCOHOL” from the time of dispatch until the time of physical release from the Incident. Members of the Team voluntarily comply with this expectation; all incident personnel will be expected to do so also.

We endorse, support, and expect an attitude of mutual respect for all Incident personnel and the public we serve. We also, endorse the attitude and work ethic that places “Safety First, every time on every Incident.” We expect nothing less.

/s/ Steve Parrish
Incident Commander
Southern Area Gold Team



Southern Area Incident Management Gold Team Fire Information

Looking for more information on the Cowbell and Parliament Fires in Big Cypress National Preserve? Follow us on social media:



InciWeb <https://inciweb.nwcg.gov/unit/2296>



Twitter <https://twitter.com/BigCypressNPS>



Facebook <https://www.facebook.com/BigCypressNPS>

You can also call us between 8 a.m. and 8 p.m. at 305-204-6659.

WE WANT YOUR PICTURES AND VIDEOS!

Please email us your videos and pictures at BICYfireinfo@gmail.com. We love to post them on social media and our information boards.

81°22'W 81°20'W 81°18'W 81°16'W 81°14'W 81°12'W 81°10'W 81°8'W 81°6'W 81°4'W 81°2'W 81°0'W 80°58'W 80°56'W 80°54'W

26°24'N 26°22'N 26°20'N 26°18'N 26°16'N 26°14'N 26°12'N 26°10'N 26°8'N 26°6'N 26°4'N 26°2'N 26°0'N 25°58'N 25°56'N 25°54'N 25°52'N 25°50'N

Cowbell Fire

Transportation Map

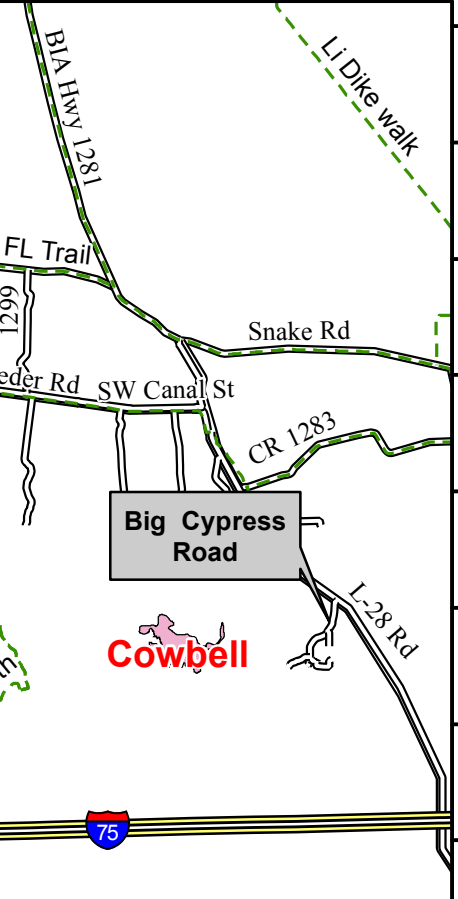
U.S. Department of the Interior
Big Cypress National Preserve
33100 Tamiami Trail East
Ochopee, FL 34141



North American Datum 1983
Map Created 4/3/2017



No warranty is made by the National Park Service (NPS) as to the accuracy, reliability, or completeness of this data for individual use or aggregate use with other data, or for purposes not intended by NPS.



Big Cypress Road

Cowbell

Bear Island Gr
Perocchi Grade
Bundschu Grade

Rest Area
Ochopee Fm
MM63 Rest Area

Exit 80

29

Deep Lake

Turner River Rd

Upper Wagonwheel
Lower Wagonwheel

FOC

Birdon Rd

HQ

H.P. Williams Roadside Park

41

Parking

Kirby Storter

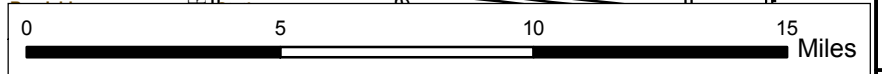
Rd Monroe

BICY South

in Mile Rd

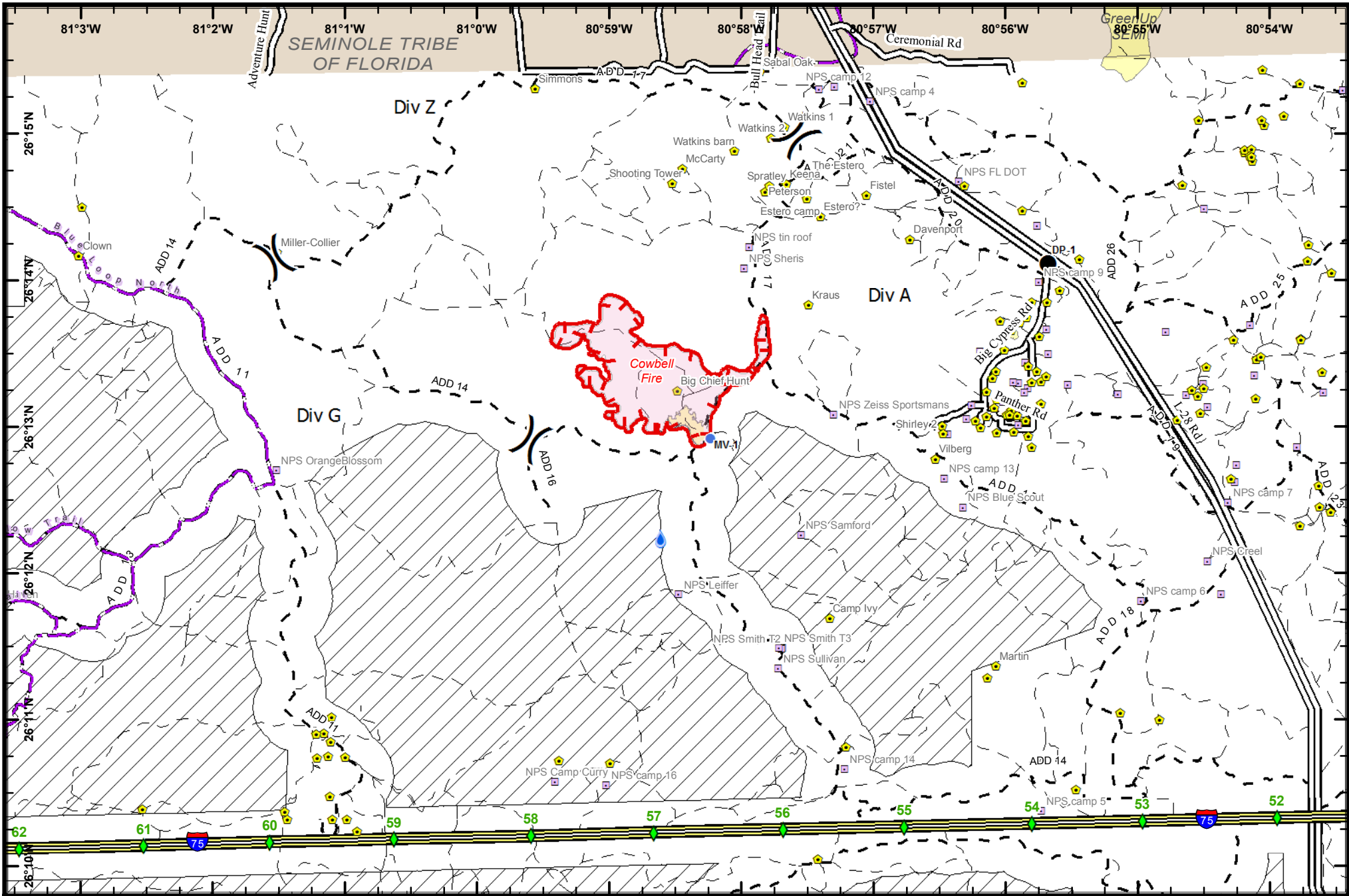
LEGEND

- Florida Trail
- Improved Road
- FirePolygon
- Fire Operations Center
- Incident Command Post



81°22'W 81°20'W 81°18'W 81°16'W 81°14'W 81°12'W 81°10'W 81°8'W 81°6'W 81°4'W 81°2'W 81°0'W 80°58'W 80°56'W 80°54'W

25°50'N 25°52'N 25°54'N 25°56'N 25°58'N 26°0'N 26°2'N 26°4'N 26°6'N 26°8'N 26°10'N 26°12'N 26°14'N 26°16'N 26°18'N 26°20'N 26°22'N 26°24'N



Cowbell Fire
FL-BCP-017033



IAP Map
April 4, 2017
Day Shift

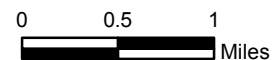
449 Approximate Acres
and Fire Perimeter
as of 4/3/16 @ 1030

Legend

- Drop Point
- Helispot
- Uncontrolled Fire Edge
- Fire Polygon
- Fire Perimeter
- Hydro Station
- Private Structures
- NPS Property
- Mile Marker
- I - 75
- Improved Road
- Primary Buggy Trail
- Non-Designated Trail (closed)
- Florida Trail
- Eligible for Wilderness
- Seminole Tribe of Florida



NAD 83 UTM 17



PHONE LIST - COWBELL FIRE

Position	Name	Phone Number	Position	Name	Phone Number
COMMAND			PLANNING		
Incident Commander	Steve Parrish	850-567-9507	Chief	Dave Berens	601-319-6823
Incident Commander (t)	Lance Elmore	501-520-7276	Chief	Steve Moore	803-360-6956
Deputy Incident Commander	Marty Bentley	423-584-1682	Resource Unit Leader	Melonie Sellers	601-508-8997
Deputy Incident Commander (t)	Debbie Beard	850-524-9966	Resource Unit Leader	Carol O'Bryan	903-263-8704
Liaison Officer	Mike Wright	970-819-2890	Resource Unit Leader (t)	Jessica Hollingsworth	540-383-6531
Public Information	Susie Heisey	912-286-3110	Situation Unit Leader	Jeff DeMatteis	601-415-9080
Public Information	Michelle Burnett	803-920-6167	Fire Behavior Analyst	Gary Jarvis	251-288-1084
Public Information (t)	Donald Simon	910-975-1895	IMET	John Pendergrast	240-499-6649
Safety Officer	Buddy Kelly	850-447-1344	GISS	Chris Evans	928-273-4203
Safety Officer	Mark Sullivan	205-531-7183	GISS	Melanie Hans	618-315-5404
Safety Officer (t)	Ken Gordon	850-688-4474	GISS (t)	Jeff Adams	361-205-4744
Acting FMO	Byron Hart	850-264-9567	Demob	Thomas Barrett	478-550-6372
			Check In	Jeff Turner	865-684-0095
OPERATIONS			Check In (t)	Tonia Johnson	678-927-1791
Planning Ops	Steve Weaver	828-360-2476	Training Specialist	John Davis	231-878-0074
Planning Ops (t)	Paul Varnedoe	423-650-2184	Compter Tech	Jerry Dronberger	479-747-7020
Field Ops	Greg Brooks	828-421-5025	Compter Tech	Rusty Brown	478-973-6231
Field Ops (t)	Mike Davis	936-219-7743			
Division A	Chad Cook	828-360-4985	LOGISTICS		
Division A (t)	Heath Thomas	501-208-7077	Chief	Willie Boston	770-328-3186
Division G	E.J. Bunzendahl	859-556-2347	Deputy	Jerry Jussila	218-235-8983
Division Z	Tom Crews	252-216-6361	Deputy	Susan Cornett	903-930-5321
Division Initial Attack	Kelly Cagle	336-302-0343	Supply Unit	Tom Piper	727-514-5513
Division Parliament	UNSTAFFED		Facilities Unit	Tom Phillips	936-635-7154
Structure Protection Group	Ryan Vice	979-215-1936	Ground Support Unit Leader	Michael Howarth	936-414-2697
Firing Group	Mary Owen	601-917-2860	Ordering Manager	Sherri Kite	850-209-2150
AIR OPERATIONS			Receiving & Distribution	Chris Combs	727-992-0046
Air Operation Branch Director	Mike Rock	606-813-9750	Base Camp Manager	Mike Justus	
Air Support Group Supervisor	Pete Kubiak	404-661-4819	Communications	George Rosenthal	936-707-1832
FINANACE			Communications	Ron Regan	828-772-8514
Chief	Wanda Kelley	423-584-1472	Comms Trailer		772-631-2573
Chief (t)	Holly Cyprian	928-919-3027	Medical Unit Leader	Gene-Paul Matson	434-665-0444
Time Unit Leader	Laura Wilson	765-427-7564	Medical Unit Leader (t)	James Fortner	202-236-3139
Time Unit Leader (t)	Sherise Foster	919-943-7843			
Comp/Claims	Terri McDonald	352-454-5385			
Equipment Time Recorder (t)	Donna Line	706-474-3216			
Personel Time Recorder	Sherise Foster	919-943-7843			
Personnel Time Recorder (t)	Gustavo Vallejo	423-457-7403			

UNIT LOG	1. Incident Name	2. Date Prepared	3. Time Prepared
	4. Unit Name/Designators	5. Unit Leader (Name and Position)	6. Operational Period

7. Personnel Roster Assigned		
Name	ICS Position	Home Base

8. Activity Log	
Time	Major Events

9. Prepared by (Name and Position)

Medical Incident Report- "9 Line"

FOR ALL MEDICAL EMERGENCIES: IDENTIFY ON SCENE INCIDENT COMMANDER BY NAME AND POSITION AND ANNOUNCE "MEDICAL EMERGENCY" TO INITIATE RESPONSE FROM IMT COMMUNICATIONS/DISPATCH.

Use items one through nine to communicate situation to communications/dispatch.

1. CONTACT COMMUNICATIONS/DISPATCH

Ex: "Communications, Div. Alpha. Stand-by for Priority Medical Incident Report." (If life threatening request designated frequency be cleared for emergency traffic.)

2. INCIDENT STATUS: Provide incident summary and command structure.

Nature of Injury/Illness		<i>Describe the injury (Ex: Broken leg with bleeding)</i>
Incident Name		<i>Geographic Name + "Medical" (Ex: Trout Meadow Medical)</i>
Incident Commander		<i>Name of IC</i>
Patient Care		<i>Name of Care Provider (Ex: EMT Smith)</i>

3. INITIAL PATIENT ASSESSMENT: Complete this section for each patient. This is only a brief, initial assessment. Provide additional patient info after completing this 9 Line Report.

Number of Patients:	Male / Female	Age:	Weight:
Conscious? <input type="checkbox"/> YES <input type="checkbox"/> NO = MEDEVAC!			
Breathing? <input type="checkbox"/> YES <input type="checkbox"/> NO = MEDEVAC!			
Mechanism of Injury: <i>What caused the injury?</i>			
Lat/Long (Datum WGS84)			

4. SEVERITY OF EMERGENCY, TRANSPORT PRIORITY

SEVERITY	TRANSPORT PRIORITY
<input type="checkbox"/> URGENT-RED Life threatening injury or illness. <i>Ex: Unconscious, difficulty breathing, bleeding severely, 2° – 3° burns more than 4 palm sizes, heat stroke, disoriented.</i>	Ambulance or MEDEVAC helicopter. Evacuation need is IMMEDIATE.
<input type="checkbox"/> PRIORITY-YELLOW Serious Injury or illness. <i>Ex: Significant trauma, not able to walk, 2° – 3° burns not more than 1-2 palm sizes.</i>	Ambulance or consider air transport if at remote location. Evacuation may be DELAYED.
<input type="checkbox"/> ROUTINE-GREEN Not a life threatening injury or illness. <i>Ex: Sprains, strains, minor heat-related illness.</i>	Non-Emergency. Evacuation considered Routine of Convenience.

5. TRANSPORT PLAN:

Air Transport: (Agency Aircraft Preferred)

<input type="checkbox"/> Helispot	<input type="checkbox"/> Short-haul/Hoist	<input type="checkbox"/> Life Flight	<input type="checkbox"/> Other
Ground Transport:			
<input type="checkbox"/> Self-Extract	<input type="checkbox"/> Carry-Out	<input type="checkbox"/> Ambulance	<input type="checkbox"/> Other

6. ADDITIONAL RESOURCE/EQUIPMENT NEEDS:

<input type="checkbox"/> Paramedic/EMT(s)	<input type="checkbox"/> Crew(s)	<input type="checkbox"/> SKED/Backboard/C-Collar
<input type="checkbox"/> Burn Sheet(s)	<input type="checkbox"/> Oxygen	<input type="checkbox"/> Trauma Bag
<input type="checkbox"/> Medication(s)	<input type="checkbox"/> IV/Fluid(s)	<input type="checkbox"/> Cardiac Monitor/AED
<input type="checkbox"/> Other (i.e. splints, rope rescue, wheeled litter)		

7. COMMUNICATIONS:

Function	Channel Name/Number	Receive (Rx)	Tone/NAC *	Transmit (Tx)	Tone/NAC *
<i>Ex: Command</i>	<i>Forest Rpt, Ch. 2</i>	<i>168.3250</i>	<i>110.9</i>	<i>171.4325</i>	<i>110.9</i>
COMMAND					
AIR-TO-GRND					
TACTICAL					

*(NAC for digital radio system)

8. EVACUATION LOCATION:

Lat/Long (Datum WGS84) <i>EX: N 40 42.45' x W 123 03.24'</i>	
Patient's ETA to Evacuation Location:	
Helispot/Extraction Size and Hazards:	

9. CONTINGENCY:

Considerations: <i>If primary options fail, what actions can be implemented in conjunction with primary evacuation method? Be thinking ahead...</i>	REMEMBER: Confirm ETA's of resources ordered Act according to your level of training Be Alert. Keep Calm. Think Clearly. Act Decisively.
--	--