

# Incident Action Plan



Day Operational Period

Wednesday

4/5/17

0800-2000

Cowbell Fire

FL-BCP-017033

PPKX14 (1502)

INCIDENT OBJECTIVES	1. Incident Name <b>Cowbell Fire</b>	2. Date Prepared <b>4/4/17</b>	3. Time Prepared <b>1700</b>
4. Operational Period <b>4/5/17 0800 - 2000</b>			
5. General Control Objectives For The Incident <u>Objectives for the Incident:</u> <ul style="list-style-type: none"> <li>• Protection of human life is top priority through the use of sound risk management decisions.</li> <li>• Protect private property and infrastructure, federal facilities, critical transportation corridors, recreational and cultural resource values, T&amp;E species and their habitat (e.g. Florida Panther, Florida bonneted bat, Red-Cockaded Woodpecker), and wilderness values through coordination with READS and following MIST Tactics on current and all initial and extended attack fires.</li> <li>• Provide opportunities to communicate and educate the public on the role of fire in the BCP and FPR ecosystems through social media and other outlets.</li> <li>• Provide training opportunities for Preserve, State, and local federal fire agency personnel to actively enhance successional planning of future firefighting personnel.</li> <li>• Provide initial attack for Big Cypress National Preserve and Florida Panther Refuge.</li> </ul>			
<u>Control Objectives:</u> <ul style="list-style-type: none"> <li>• Keep fire west of the ADD17 between the junctions of ADD 20/ADD 17 and ADD 17/ADD 14, and south of the Big Cypress National Preserve's northern boundry to minimize impacts to high values including Seminole and Miccosukee tribal lands, Sanctuary community, and private land within and near to the boundaries of the Big Cypress National Preserve and Florida Panther Wildlife Refuge.</li> <li>• Minimize smoke impacts on I-75, State Road 29 and 41 in order to avoid safety threats to the public.</li> <li>• Utilize full suppression strategies and tactics that commit responders only to operations where and when they can be successful and under conditions where important values actually at risk are protected with the least exposure necessary while sustaining relationships with the people we serve.</li> </ul>			
6. Weather forecast for Period  South winds early will become southwest during the afternoon as high pressure moves away from the area. Isolated afternoon storms are forecast. A strong late season cold front will approach the area on Thursday eventually bringing Northwest winds and cooler dryer conditions.			
7. General Safety Message  Look up, look down, look all around for hazards, recognize them and mitigate them.			
8. ATTACHMENTS (X IF ATTACHED) <input checked="" type="checkbox"/> Organization List - ICS 203 <input checked="" type="checkbox"/> Medical Plan - ICS 206    [ ] _____ <input checked="" type="checkbox"/> Division Assignment Lists - ICS 204 <input checked="" type="checkbox"/> Incident Map                      [ ] _____ <input checked="" type="checkbox"/> Communications Plan - ICS 205                      [ ] Traffic Plan                      [ ] _____			
9. Prepared By (Planning Section Chief)  <b>/s/ Dave Berens / Steve Moore</b>		10. Approved By (Incident Commander)  <b>/s/ Lance Elmore(t)</b>	

ORGANIZATION ASSIGNMENT LIST		9.	Operations Section
1. Incident Name <b>COWBELL FIRE</b>		Planning Operations	Steve Weaver, Paul Varnedoe (t)
		Field Operations	Greg Brooks, Mike Davis (t)
2. Date 04/04/17	3. Time 1700		
4. Operational Period 04/05/17 DAY (0800 – 2000)		<b>a.</b>	<b>Divisions/Groups</b>
<b>5. Incident Commander and Staff</b>		Division	A Chad Cook, Heath Thomas (t)
		Division	G E.J. Bunzendahl
		Division	Z Tom Crews
		Division	Initial Attack Kelly Cagle
		Division	Parliament & Misc Fires UNSTAFFED
Liaison Officer	Mike Wright	Group	Structure Protection Ryan Vice
Safety Officer	Buddy Kelley, Mark Sullivan, Ken Gordon (t)	Group	Firing Mary Owen/Chris Richards (t)
Information Officer	Susie Heisey, Michelle Burnett, Donald Simon (t)		
<b>6. Agency Reps</b>			
Agency Administrator	Tammy Whittington (Big Cypress)		
Agency Administrator	J.D. Lee (Big Cypress)		
Chief of Fire & Aviation	Byron Hart (Big Cypress)		
Zone FMO	Cass Palmer (Panther)		
Collier Co. Sheriff	Lt. Jake Walker		
Dade Co. Sheriff	Mike Preston	<b>b.</b>	<b>Air Operations Branch</b>
Seminole Tribe of Florida	Grant Steelman		
		Air Operation Branch Director	Mike Rock
<b>7. Planning Section</b>		Air Support Group Supervisor	Pete Kubiak
Chief	Dave Berens, Steve Moore	Air Tactical Group Supervisor	Ken McLaughlin
Resources Unit	Melone Sellers, Jessica Hollingsworth (t)	Helibase Manager	Denise Croker
Situation Unit	Jeff DeMatteis, Carol O'Bryan (t)		
FBAN	Gary Jarvis, Brenda Dale (t)	<b>8. Logistics Section</b>	
IMET	John Pendergrast	Chief	Willie Boston, Tom Phillips (t)
Geo. Info. Spec.	Chris Evans, Melanie Hans, Jeff Adams (t)	Deputy	Jerry Jussila, Susan Cornett
Demob Unit	Thomas Barrett	Supply Unit	Tom Piper
Status Check-In	Jeff Turner	Facilities Unit	Glen Bee
Training	John Davis	Ground Support	Michael Howarth/Peter Lashoto
ITSS	Jerry Dronberger, Rusty Brown	Equipment Manager	
		Ordering Manager	Sherri Kite
<b>10. Finance Section</b>		Receiving & Distrib. Mgr.	Chris Combs
Chief	Wanda Kelley, Holly Cyprian (t)	Base Camp Manager	Mike Justus
Time Unit	Laura Wilson, Sherise Foster (t)	Communications Unit	George Rosenthal, Ron Regan
Equipment Time Unit	Donna Line (t)	Incident Communication Mgr.	
Cost Unit	Carolyn Hughes	Rado	Mark Pomponio, Federico Avakian, Brian Gieryk, Scott Brownlow
Comp/Claims	Terri McDonald	Medical Unit Leader	Gene-Paul Matson, James Fortner (t)
Procurement	Leslie Solberg	Security	Sasha Herrin
Personnel Time Recorder	Gustavo Vallejo (t)		
Prepared by (RESL) /s/ Melonie Sellers / Jessica Hollingsworth (t)			



# Fire Weather Forecast

FORECAST NO: 3 NAME OF FIRE: Cowbell Fire  
PREDICTION FOR: Wednesday Day Shift UNIT: Big Cypress National Preserve  
SHIFT DATE: April 5, 2017 Incident Meteorologist: *John Pendergrast*  
FORECAST ISSUED: 1900 April 4, 2017 240-499-6649

---

**DISCUSSION:** South winds early will become southwest during the afternoon as high pressure moves away from the area. Isolated afternoon storms are forecast. A strong late season cold front will approach the area on Thursday eventually bringing Northwest winds and cooler dryer conditions.

**TODAY (WEDNESDAY DAY SHIFT):**

WEATHER: Partly cloudy and warm. Isolated late afternoon and evening thunderstorms.  
WIND (20 FT): Southeast 5 to 10 mph in the morning becoming southwest 10 to 15 mph in the afternoon.  
MAX TEMPERATURES: 89 to 91. Heat Indices 92 to 94.  
MIN RH: 47%.  
LAL: 2 Chance measurable rain: 20% (rain amounts a tenth an inch or less.)  
DISPERSION: 55 MAX MIXING HEIGHT 5500 TRANSPORT WINDS: South 12 to 18 mph in afternoon

-----  
**TONIGHT (WEDNESDAY NIGHT):**

WEATHER: Partly cloudy with isolated showers early.  
WIND (20 FT): Southwest 2 to 4 mph.  
MIN TEMPERATURES: 67 TO 70F.  
MAX RH: 96 to 100%. LVORI 8 (max)  
LAL: 1 Chance measurable rain: less than 20% early.

-----  
**THURSDAY:**

WEATHER: Mostly cloudy. Scattered showers and isolated thunderstorms. Partial clearing late.  
WIND (20 FT): Southwest 12 to 18 mph becoming Northwest 15 to 20 mph by late afternoon.  
MAX TEMPERATURES: 79 to 83F.  
MIN RH: 56%.  
LAL: 2 Chance measurable rain: 50% (rain amounts up to a quarter inch in affected areas).  
DISPERSION: 49 MAX MIXING HEIGHT 4800 TRANSPORT WINDS Southwest 16 to 23 mph.

-----  
**GENERAL OUTLOOK FRIDAY THROUGH SUNDAY: ... Critical Fire Weather Conditions Friday and Saturday...**

Northwest winds will keep cooler and dryer conditions Friday into Saturday. Critical Fire weather conditions are possible Friday and Saturday afternoon due to wind and low RH. Winds becoming Northeast Sunday as high pressure relocates over the Florida Atlantic waters.

WEATHER: Breezy, cooler and dry Fri and Sat. Lows in the 50s. Highs in the 70s. Lows around 60 Sunday, Highs in the 80s.  
WIND (20 FT): NW 15 to 20 mph Friday and NW 15 mph Saturday. NE 10 mph Sunday.  
MIN RH: 40 Percent Fri. 32 to 38 percent Saturday. 45 Percent Sunday.



Current Incident  
area RAWs  
conditions

Sunrise Wed: 7:13 am  
Sunset Wed: 7:44 pm  
Moon First Qtr:

Source: US Naval Observatory

# FIRE BEHAVIOR FORECAST

<b>FORECAST NUMBER:</b> 03	<b>TYPE OF FIRE:</b> Wildland Fire
<b>FIRE NAME:</b> Cowbell	<b>OPERATIONAL PERIOD:</b> Tuesday April 5, 2017
<b>DATE ISSUED:</b> April 4, 2017	<b>TIME ISSUED:</b> 2000
<b>UNIT:</b> Big Cypress National Preserve	<b>SIGNED:</b> GaryWJarvis Gary Jarvis FBAN

## INPUTS

### WEATHER SUMMARY:

WEATHER: Partly cloudy and warm. Isolated late afternoon and evening thunderstorms.  
WIND (20 FT): Southeast 5 to 10 mph in the morning becoming southwest 10 to 15 mph in the afternoon.  
MAX TEMPERATURES: 89 to 91. Heat Indices 92 to 94.  
MIN RH: 47%.  
LAL: 2                                      Chance measurable rain: 20% (rain amounts a tenth an inch or less.)  
DISPERSION: 55 MAX                      MIXING HEIGHT 5500      TRANSPORT WINDS: South 12 to 18 mph in afternoon

## OUTPUTS

### FIRE BEHAVIOR

#### GENERAL:

Primary fuels consist of grass, southern rough and timber litter. Current fuel conditions are favorable for very active fire behavior within the grass and shrub fuels. The current drought conditions have led to both live and dead fuel moistures to reach areas of concern. Expect all fuels to burn readily, including those that appear green.

**Calculated 1 hour fuel moisture:** 7%

**Forecasted 10 hour fuel moisture:** 10% **Forecasted 100 hour fuel moisture:** 13-15%

**Estimated Live Fuel Moistures: Herbaceous:** 84% **Woody:** 100%

**Probability of Ignition:** 52% with no shading

#### Expected Fire Behavior:

**Grass** – ROS 23-77 ch/hr with flame lengths 5-8 ft. **Timber Understory/Shrub** – ROS 14-38 ch/hr with flame lengths 8-13 ft  
**Spotting** – up to ¼ mile

**Local Thresholds:** Eye Level winds over 10 mph, RH below 50% and a Dispersion Index above 60

*If thunderstorms develop, fuels affected by gusty outflow winds may produce erratic fire behavior. Rates of spread and flames lengths listed above can easily double!!*

#### SPECIFIC:

**Cowbell Fire** – A southerly wind flow will continue to push the fire to the north towards the Preserve Boundary and local dwellings.

**Initial Attack:** Moderate to heavy resistance can be expected on any new starts in the grass/brush fuels. Expect rapid rates of spread, especially in the grass models and anticipate some spotting to challenge your control efforts.

**AIR OPERATIONS:** Be cautious of isolated afternoon and evening thunderstorms. Communicate with ground resources if approaching thunderstorms moves across fire area.

## SAFETY

There are four common denominators of fire behavior on fatal or near fatal fires

- 1 – On relative small fires or deceptively quiet areas of large fires
- 2 – In relatively light fuels, such as grass, herbs and light brush
- 3 – When there is an unexpected shift in the wind direction or wind speed. (Outflows/Seas Breezes)
- 4 – When fire responds to topographic conditions and runs up hill. (Fuel types change with elevation here)

## Division/Group Assignment List (ICS 204 WF)

<b>1. Incident Name:</b>			<b>3.</b>			
Cowbell Fire			<b>Branch:</b>		<b>Division/Group</b>	
<b>2. Operational Period:</b>					<b>A</b>	
Date/Time From: 04/05/17 0800		Date/Time To: 04/05/17 2000				
<b>4. Operations Personnel</b>						
AIR ATTACK SUPERVISOR				FIELD OPERATIONS		Greg Brooks/Mike Davis (t)
DIVISION/GROUP SUPERVISOR		Chad Cook Heath Thomas (t)		PLANNING OPERATIONS		Steve Weaver Paul Varnedoe (t)
<b>5. Resources Assigned this Period</b>						
Strike Team / Task Force / Resource Designator		LWD	Leader		Number Persons	Drop Off PT./Time
MOD Ashley		O-1	4/09	Ben Sanders	8	
MOD Great Smoky		O-70	4/11	Josh Nicholas	8	
Transport Buggy		E-16	4/06	Captain Steve-Victor	1	
Transport Buggy		E-17	4/06	Captain Steve-Bobby	1	
Transport Buggy		E-18	4/06	Captain Steve-Timmy	1	
Masticator		E-6	4/17	Mike Joel	1	
HEQB		O-25	4/16	Eric Moore	1	
EMTF		O-16		Tracy Milakovic	1	
SOFR		O-38	4/16	Joe Fowler	1	
<b>6. Control Operations/Work Assignments:</b>						
<b>Task:</b>						
<ul style="list-style-type: none"> <li>Anchor suppression work at fire perimeter on ADD 17/14 intersection</li> <li>Patrol and conduct mop up, as appropriate</li> <li>Coordinate with firing group to conduct strategic firing operations northerly along ADD 17 to minimize fire impacts</li> <li>Coordinate with Div Z on triage of hunt camps for point protection</li> <li>Continue vegetative mastication on ADD 17</li> </ul>						
<b>Purpose:</b>						
<ul style="list-style-type: none"> <li>To keep fire confined and contained north and west of ADD 17</li> <li>To protect hunt camp structures</li> </ul>						
<b>End State:</b>						
<ul style="list-style-type: none"> <li>Control fire perimeter north and west of ADD 17 to eliminate threat to Sanctuary area structures</li> </ul>						
<b>7. Special Instructions:</b> Follow tracked vehicle requirement restrictions. Establish and maintain LCES during operational period.						
Utilize MIST tactics as outlined in Fire Operations Guide for BICY.						
<b>8. Division/Group Communication Summary</b>						
Function	Channel	RX Frequency N/W	RXTone/NAC	TX Frequency N/W	TX Tone/NAC	Mode
COMMAND	7	164.6250	1188	163.1500	1188	D
TACTICAL	4	168.6000		168.6000		A
AIR TO GROUND	10	168.3250		168.3250		A
<b>9. Prepared By (Resource Unit Leader)</b>		<b>Approved By (Planning Section Chief)</b>			<b>Date</b>	<b>Time</b>
/s/Melonie Sellers/Jessica Hollingsworth (t)		Dave Berens/Steve Moore			04/04/17	16:00

## Division/Group Assignment List (ICS 204 WF)

<b>1. Incident Name:</b>			<b>3.</b>			
Cowbell Fire			Branch:		Division/Group	
<b>2. Operational Period:</b>			G			
Date/Time From: 04/05/17 0800	Date/Time To: 04/05/17 2000					
<b>4. Operations Personnel</b>						
AIR ATTACK SUPERVISOR			FIELD OPERATIONS		Greg Brooks/Mike Davis (t)	
DIVISION/GROUP SUPERVISOR	E.J. Bunzendahl		PLANNING OPERATIONS		Steve Weaver Paul Varnedoe (t)	
<b>5. Resources Assigned this Period</b>						
Strike Team / Task Force / Resource Designator	LWD	Leader	Number Persons	Drop Off PT./Time	Pick Up PT./Time	
<b>6. Control Operations/Work Assignments:</b>						
<b>Task:</b>						
<ul style="list-style-type: none"> <li>Identity priority areas for mastication on ADD 14</li> <li>Continue assessing presuppression work on DIV G</li> </ul>						
<b>Purpose:</b>						
<ul style="list-style-type: none"> <li>To keep fire contained south and west of ADD 17 and ADD 14</li> </ul>						
<b>End State:</b>						
<ul style="list-style-type: none"> <li>Confine fire perimeter north and west to reduce threats to resource values at risk</li> </ul>						
<b>7. Special Instructions:</b> Follow tracked vehicle requirement restrictions. Establish and maintain LCES during operational period. Utilize MIST tactics as outlined in Fire Operations Guide for BICY.						
<b>8. Division/Group Communication Summary</b>						
Function	Channel	RX Frequency N/W	RXTone/NAC	TX Frequency N/W	TX Tone/NAC	Mode
COMMAND	7	164.6250	1188	163.1500	1188	D
TACTICAL	5	168.2500		168.2500		A
AIR TO GROUND	10	168.3250		168.3250		A
<b>9. Prepared By (Resource Unit Leader)</b>			<b>Approved By (Planning Section Chief)</b>			<b>Date</b>
/s/Melonie Sellers/Jessica Hollingsworth(t)			Dave Berens/Steve Moore			04/04/17
					<b>Time</b>	
					16:00	

## Division/Group Assignment List (ICS 204 WF)

<b>1. Incident Name:</b>			<b>3.</b>			
Cowbell Fire			Branch:		Division/Group	
<b>2. Operational Period:</b>					<b>Z</b>	
Date/Time From: 04/05/17 0800	Date/Time To: 04/05/17 2000					
<b>4. Operations Personnel</b>						
AIR ATTACK SUPERVISOR			FIELD OPERATIONS		Greg Brooks/Mike Davis (t)	
DIVISION/GROUP SUPERVISOR	Tom Crews		PLANNING OPERATIONS		Steve Weaver Paul Varnedoe (t)	
<b>5. Resources Assigned this Period</b>						
Strike Team / Task Force / Resource Designator	LWD	Leader	Number Persons	Drop Off PT./Time	Pick Up PT./Time	
HC2IA Colorado BLM	C-3	4/09 Ian Barrett	20			
MOD Buffalo	O-21	4/16 Josh Hampton	6			
EMTF	O-17	4/15 Jim Stout	1			
<b>6. Control Operations/Work Assignments:</b>						
<b>Task:</b>						
<ul style="list-style-type: none"> <li>Continue suppression work at fire perimeter from Div A break</li> <li>Complete triage of hunt camp structures in Div Z and Div A for point protection</li> <li>Utilize perimeter trail for firing operations north and east</li> <li>Disk fence line boundary</li> </ul>						
<b>Purpose:</b>						
<ul style="list-style-type: none"> <li>To keep fire confined and contained south and east of ADD 17</li> <li>To protect hunt camp structures</li> </ul>						
<b>End State:</b>						
<ul style="list-style-type: none"> <li>Control fire perimeter south and east of ADD 17 to eliminate threat to Seminole Nation Lands and Ceremonial Area</li> </ul>						
<b>7. Special Instructions:</b> Follow tracked vehicle requirement restrictions. Establish and maintain LCES during operational period.						
Utilize MIST tactics as outlined in Fire Operations Guide for BICY.						
<b>8. Division/Group Communication Summary</b>						
Function	Channel	RX Frequency N/W	RXTone/NAC	TX Frequency N/W	TX Tone/NAC	Mode
COMMAND	7	164.6250	1188	163.1500	1188	D
TACTICAL	8	166.7500		166.7500		A
AIR TO GROUND	10	168.3250		168.3250		A
<b>9. Prepared By (Resource Unit Leader)</b>			<b>Approved By (Planning Section Chief)</b>		<b>Date</b>	<b>Time</b>
/s/Melonie Sellers/Jessica Hollingsworth(t)			Dave Berens/Steve Moore		04/04/17	16:00



## Division/Group Assignment List (ICS 204 WF)

<b>1. Incident Name:</b>			<b>3.</b>			
Cowbell Fire			Branch:		Division/Group	
<b>2. Operational Period:</b>					<b>IA</b>	
Date/Time From: 04/05/17 0800	Date/Time To: 04/05/17 2000					
<b>4. Operations Personnel</b>						
AIR ATTACK SUPERVISOR		FIELD OPERATIONS		Greg Brooks/Mike Davis (t)		
DIVISION/GROUP SUPERVISOR	Kelly Cagle	PLANNING OPERATIONS		Steve Weaver Paul Varnedoe (t)		
<b>5. Resources Assigned this Period</b>						
Strike Team / Task Force / Resource Designator	LWD	Leader		Number Persons	Drop Off PT./Time	Pick Up PT./Time
ENG6 K31	E-7	4/15	Steven Staples	2		
ENG6 #602		local	Nate Ochs/Jake Hauser (t)	2		
Duece Buggy IA		4/09	Lucas Hunkler	2		
EMTF	O-18	4/15	Bob Bruington	1		
<b>6. Control Operations/Work Assignments:</b>						
<b>Task:</b>						
<ul style="list-style-type: none"> <li>Coordinate with BICY duty officer for notification of newly reported ignitons</li> <li>Coordinate initial attack action with assigned aviation and /or ground assets</li> <li>Determine IA resource prepositioning needs across BICY and FPWR</li> </ul>						
<b>Purpose:</b>						
<ul style="list-style-type: none"> <li>Ensure communications with FL Hwy Patrol regarding smoke on I-75</li> <li>Ensure timely response on any IA within BICY and FPWR</li> </ul>						
<b>End State:</b>						
<ul style="list-style-type: none"> <li>Protect human life</li> <li>Minimize environment damage to protect habitat of threatened and endangered species</li> <li>Minimize damage to public and private property</li> </ul>						
<b>7. Special Instructions:</b> Follow tracked vehicle requirement restrictions. Establish and maintain LCES during operational period.						
Utilize MIST tactics as outlined in Fire Operations Guide for BICY.						
<b>8. Division/Group Communication Summary</b>						
Function	Channel	RX Frequency N/W	RX Tone/NAC	TX Frequency N/W	TX Tone/NAC	Mode
COMMAND	7	164.6250	1188	163.1500	1188	D
TACTICAL	9	166.8250		166.8250		A
AIR TO GROUND	6	169.1125		169.1125		A
<b>9. Prepared By (Resource Unit Leader)</b>		<b>Approved By (Planning Section Chief)</b>			<b>Date</b>	<b>Time</b>
/s/Melonie Sellers/Jessica Hollingsworth(t)		Dave Berens/Steve Moore			04/4/17	16:00

## Division/Group Assignment List (ICS 204 WF)

<b>1. Incident Name:</b>		<b>3.</b>				
Cowbell Fire		<b>Branch:</b>	<b>Division/Group</b> <b>Parliament/ Misc Fire Patrol</b>			
<b>2. Operational Period:</b>						
Date/Time From: 04/05/17 0800	Date/Time To: 04/05/17 2000					
<b>4. Operations Personnel</b>						
AIR ATTACK SUPERVISOR		FIELD OPERATIONS	Greg Brooks/Mike Davis (t)			
DIVISION/GROUP SUPERVISOR		PLANNING OPERATIONS	Steve Weaver Paul Varnedoe (t)			
<b>5. Resources Assigned this Period</b>						
Strike Team / Task Force / Resource Designator	LWD	Leader	Number Persons	Drop Off PT./Time	Pick Up PT./Time	
unstaffed						
<b>6. Control Operations/Work Assignments:</b>						
<b>Task:</b>						
<ul style="list-style-type: none"> <li>Patrol and monitor fires on BICY and FPWR with aviation and ground assets as directed by lead OSC</li> <li>Commensurate with values at risk</li> <li>Monitor fires for further suppression management action</li> </ul>						
<b>Purpose:</b>						
<ul style="list-style-type: none"> <li>Assure suppression action taken limits environmental impact, consistent with MIST tactics</li> </ul>						
<b>End State:</b>						
<ul style="list-style-type: none"> <li>Protect human life</li> <li>Minimize damage to public and private property</li> <li>Minimize environmental damage to protect habitat of threatened and endangered species</li> </ul>						
<b>7. Special Instructions:</b> Follow tracked vehicle requirement restrictions. Establish and maintain LCES during operational period. Utilize MIST tactics as outlined in Fire Operations Guide for BICY.						
<b>8. Division/Group Communication Summary</b>						
Function	Channel	RX Frequency N/W	RXTone/NAC	TX Frequency N/W	TX Tone/NAC	Mode
COMMAND	7	164.6250	1188	163.1500	1188	D
TACTICAL	11	166.7250	0659	166.7250	0659	D
AIR TO GROUND	10	168.3250		168.3250		A
<b>9. Prepared By (Resource Unit Leader)</b>		<b>Approved By (Planning Section Chief)</b>		<b>Date</b>	<b>Time</b>	
/s/Melonie Sellers/Jessica Hollingsworth(t)		Dave Berens/Steve Moore		04/04/17	16:00	

## Division/Group Assignment List (ICS 204 WF)

<b>1. Incident Name:</b>			<b>3.</b>			
Cowbell Fire			<b>Branch:</b>		<b>Division/Group Structure Protection Group</b>	
<b>2. Operational Period:</b>						
Date/Time From: 04/05/17 0800		Date/Time To: 04/05/17 2000				
<b>4. Operations Personnel</b>						
AIR ATTACK SUPERVISOR				FIELD OPERATIONS		Greg Brooks/Mike Davis (t)
DIVISION/GROUP SUPERVISOR		Ryan Vice		PLANNING OPERATIONS		Steve Weaver Paul Varnedoe (t)
<b>5. Resources Assigned this Period</b>						
Strike Team / Task Force / Resource Designator		LWD	Leader		Number Persons	Pick Up PT./Time
HC1 Midewin C-2		4/10	Logan Blankenship		19	
MOD BIFZ #2 O-92		4/16	Brett Morefield		8	
ENG6 WFS E-8		4/16	Dave Sechrist		3	
ENG6 WFS E-9		4/16	Saul Irvin		2	
ENG6 Attack One E-10		4/16	Wes Coleman		1	
TFLD		local	Sam Marksion		1	
TFLD (t)		local	Daren Gunn		1	
STPS O-4.62		4/16	Glenn Phillips		1	
FOBS O-24		4/19	Gabe Gamino		1	
FOBS O-22		4/18	Ron Rockis		1	
FOBS O-23		4/18	Luke Hurley		1	
FOBS O-84		Local	Mindy Wright		1	
EMTF O-15		4/16	Matt Lancaster		1	
<b>6. Control Operations/Work Assignments:</b>						
<b>Task:</b>						
<ul style="list-style-type: none"> <li>• Affirm contact procedures with Collier County EMS and Sheriff Dept to assure smooth communication in event of community evacuation needs</li> <li>• Evaluate Sanctuary community and hunt camp area in DIV A and Div Z area to complete structure protection plan</li> <li>• Coordinate with landowners to determine special considerations and road or trail access</li> </ul>						
<b>Purpose:</b>						
<ul style="list-style-type: none"> <li>• Ensure timely response to protect human life, property and access</li> </ul>						
<b>End State:</b>						
<ul style="list-style-type: none"> <li>• Maintain communications with appropriate county emergency management and law enforcement agencies to complete timely evacuations</li> </ul>						
<b>7. Special Instructions:</b> Follow tracked vehicle requirement restrictions. Establish and maintain LCES during operational period.						
Utilize MIST tactics as outlined in Fire Operations Guide for BICY.						
<b>8. Division/Group Communication Summary</b>						
Function	Channel	RX Frequency N/W	RXTone/NAC	TX Frequency N/W	TX Tone/NAC	Mode
COMMAND	7	164.6250	1188	163.1500	1188	D
TACTICAL	11	166.7250	0659	166.7250	0659	D
AIR TO GROUND	10	168.3250		168.3250		A
<b>9. Prepared By (Resource Unit Leader)</b> /s/Melonie Sellers/Jessica Hollingsworth(t)		<b>Approved By (Planning Section Chief)</b> Dave Berens/Steve Moore			<b>Date</b> 04/04/17	<b>Time</b> 16:00

### Division/Group Assignment List (ICS 204 WF)

<b>1. Incident Name:</b>			<b>3.</b>				
Cowbell Fire			Branch:		Division/Group		
<b>2. Operational Period:</b>			<b>Firing Group</b>				
Date/Time From: 04/05/17 0800	Date/Time To: 04/05/17 2000						
<b>4. Operations Personnel</b>							
AIR ATTACK SUPERVISOR				FIELD OPERATIONS			
				Greg Brooks/Mike Davis (t)			
DIVISION/GROUP SUPERVISOR		Mary Owen Chris Richards (t)		PLANNING OPERATIONS			
				Steve Weaver Paul Varnedoe (t)			
<b>5. Resources Assigned this Period</b>							
Strike Team / Task Force / Resource Designator			LWD	Leader	Number Persons	Drop Off PT./Time	Pick Up PT./Time
Aerial Ignition			O-87	4/10	Adam Kunce	1	
Slimer Suppression Buggy				local	April Deming	3	
Seminole Suppression Buggy				local	Mike Lightsey	2	
BICY Suppression Buggy #2				local	Justin Phippen	1	
BICY Suppression Buggy #3				local	Sam Ashbaugh	2	
<b>6. Control Operations/Work Assignments:</b>							
<b>Task:</b>							
<ul style="list-style-type: none"> <li>Continue strategic firing operations as coordinated with DIV A</li> </ul>							
<b>Purpose:</b>							
<ul style="list-style-type: none"> <li>No intent to complete a large scale burnout, instead a purposeful firing operation to confine and contain the fire along ADD 17 thru DIV A to DIV Z</li> <li>Complete point protection techniques around hunt camps in DIV Firing Group and DIV Z</li> </ul>							
<b>End State:</b>							
<ul style="list-style-type: none"> <li>Keep fire north and west of ADD 17 to protect Sanctuary Community and Ceremonial and Tribal Lands</li> </ul>							
<b>7. Special Instructions:</b> Follow tracked vehicle requirement restrictions. Establish and maintain LCES during operational period.							
Utilize MIST tactics as outlined in Fire Operations Guide for BICY.							
<b>8. Division/Group Communication Summary</b>							
Function	Channel	RX Frequency N/W	RXTone/NAC	TX Frequency N/W	TX Tone/NAC	Mode	
COMMAND	7	164.6250	1188	163.1500	1188	D	
TACTICAL	4	168.6000		166.6000		A	
AIR TO GROUND	10	168.3250		168.3250		A	
<b>9. Prepared By (Resource Unit Leader)</b>		<b>Approved By (Planning Section Chief)</b>				<b>Date</b>	<b>Time</b>
/s/Melonie Sellers/Jessica Hollingsworth (t)		Dave Berens/Steve Moore				04/04/17	16:00

# 7AIR OPERATIONS SUMMARY

OPERATIONAL PERIOD DATE: 04-05-17

0900-2000

1. INCIDENT NAME: Cowbell	2. PREPARED BY: Mike Rock	3. Sunrise: 0713 Sunset: 1948
<p>4. REMARKS (Safety Notes, Hazards, Air Operations Special Equipment,, etc.): Medivac Aircraft: <b>5HQ</b>                  MTR- Located along state road 29.Fire Dispatch gets MTR activity every morning                  Do not over fly structures with external load missions.                  All aircraft should use strobes and running lights in smoky conditions.                  Hazards: Snags, non-incident aircraft, and winds.                  Contract helicopter working special use permit in North Central portion of BICY. Area identified on pilot briefing board. ATGS has air to air communications.</p>		<p>5. Squawk 1255                  TFR—7/4656 ZMA FL, Airspace 25 nm NE of Ochopee</p>

6. PERSONNEL	Phone	7. FREQUENCIES	AM	FM	8. FIXEDWING	Base
AOBD: Mike Rock ASGS: Pete Kubiak	606-813-9750 404-661-4819	Air/Air Rotor	123.575		Bravo 04-	ASM--Marco Island
ATGS: Ken McLaughlin	813-997-0317	Air/Air Fixed Wing	118.825		T-801	Seat –IMM, Start 0900
<p><u>Oasis Helibase (9FL7)</u></p> HEB2: Denise Croker HEB (t) Mike Roof Seat Manager – Keith Olive Seat Manager – Jack Benzilio	239-695-0278  770-548-8092  801-503-7851 970-799-1232	Air/Ground Cowbell Air/Ground IA		168.3250 RX/TX (A)  169.1125 RX/TX (A)	T-819 Air Attack	Seat—IMM, Start 0900 4566M- Baron- expected 4-5 wx dependant
Big Cypress Fire Dispatch	239-695-9280 x 104	Flight Following (BICY)		169.7250 RX (D) NAC (Hex: 5EA) (Dec: 1514)		
		Air/Guard  Deck		168.6250 RX/TX Tone 110.9  166.7750		

## 9. HELICOPTERS (Use Additional Sheets As Necessary)

FAA N# or Designator	TY	MAKE/MODEL	BASE	START	REMARKS	FAA N# or Designator	TY	MAKE/MODEL	BASE	START	REMARKS
206RW	3	Bell 206	Oasis	0900	Park Helicopter	1KA	1	K-MAX	Oasis	0900	Bucket
0HH	3	Bell 206	Oasis/RON-Miami	0900	Recon / Bucket	612CK	1	S-61	Oasis	0900	Tanked
5HQ	2	Bell 205++	Oasis	0900	Crew/ Bucket	718HT	1	S-64	Oasis	0900	Tanked
6HX	2	Bell 205	Oasis	0900	Crew/Bucket						

## 10. TASK/MISSION/ASSIGNMENT (Use ICS-220a if additional space needed; Type/Function includes: Air Tactical, Retardant, Recon, Personnel Transport, Water Dropping, etc.)

TYPE/FUNCTION	NAME OF PERSONNEL OR CARGO (if applicable) OR INSTRUCTIONS FOR TACTICAL AIRCRAFT	MISSION START	FLY FROM	FLY TO
Mapping	As Requested	0930		
Reconnaissance	As Requested	0930		
Water Drops	As Requested	0930		

## Major Hazards and Risks: *Snakes*

**QUIZ!** So what do you do if you encounter a snake in the woods?  
**The answer:** is quite simple, simply walk away!

'Eastern Coral Snake'



Venomous Snakes of South Florida  
Photos by: Mark Danaher

Florida Cottonmouth  
(Agkistrodon piscivorus conanti)



'Dusky Pygmy  
Rattlesnake'



Eastern Diamondback  
(Crotalus adamanteus)

### Safe practices

- Avoid placing hands, arms, feet or legs in areas (e.g., vegetation) where you can't see where you're placing them.
- Check carefully before stepping over a log, and ideally, try to walk around a log instead of stepping over it. Our pitvipers (i.e., eastern diamondback rattlesnake, pygmy rattlesnake and cottonmouth) **are ambush predators**. They are going to be positioned in the most likely location to ambush their prey. They love filtered sunlight, and diamondbacks are often encountered under logs, gopher tortoise burrows, solution holes in limestone, stump holes, under saw palmetto, or at the base of a plant where they can get filtered sunlight.
- While venomous snakes generally do not strike when approached or even stepped on, they **almost always do if you grab them and/or pick them up** (whether intentionally or accidentally).
- Always be cautious when walking through woods or places where you won't have clear views of where you step.
- Use a flashlight so you can see the ground at night in areas where venomous snakes might be present.
- If you encounter a snake, simply step back or, if you are on the road, drive around or let it pass.

### If Bitten

Remain calm and move beyond the snake's striking distance. Most important, seek medical assistance. Initiate the 'Nine Line' protocol see your IAP.

Safety Officers: Ken Gordon(t), Buddy Kelly, Mark Sullivan

## INCIDENT SAFETY ANALYSIS 215a

### Cowbell Fire - Wednesday, April 05, 2017

8. Location	9. Hazard	6. Control or Abatement Action (Engineering, Administrative, PPE, Avoidance, Education, etc)
DIVS ALL & IA	Hazard Trees	<ul style="list-style-type: none"> <li>~ Avoid cutting Hazard Trees, unless they are an obvious Safety Hazard to crews in the vicinity ( Reference the "Big Cypress National Preserve - Wilfire Incident Resource Protection Plan")</li> <li>~ Follow "Hazard Tree Safety" guidelines, IRPG page 22.</li> <li>~ Post lookouts, or use a spotter in mop-up areas with personnel.</li> <li>~ Don't park vehicles or take breaks in high concentrations of hazard trees.</li> <li>~ Establish trigger points for disengagement during high wind events.</li> <li>~ Remember that the hazard zone extends a minimum of 2 1/2 tree heights.]</li> </ul>
DIVS ALL & IA	Helicopter Operations	<ul style="list-style-type: none"> <li>~ Stay clear of all bucket drops when suppression actions are in place and allow 1 minute prior to re-entry.</li> <li>~ Monitor Air-Ground communications.</li> <li>~ Follow aviation safety guidelines in IRPG and IHOG.</li> </ul>
DIVS ALL & IA	Injury & Medical Emergency	<ul style="list-style-type: none"> <li>~ For "IWI" use 9 line procedures</li> <li>~ For "air hoist capability" or "snake bite treatment" contact Big Cypress Communications to request "Miami-Dade Air Rescue" for assistance.</li> <li>~ Assist injured employee with appropriate medical care.</li> <li>~ Use EMT's on Division for initial care.</li> <li>~ Follow medical protocol as outlined in ICS-206 &amp; IRPG Pgs 99-108</li> </ul>
DIVS ALL & IA	Injury & Medical Emergency	<ul style="list-style-type: none"> <li>~ For "IWI" use 9 line procedures</li> <li>~ For "air hoist capability" or "snake bite treatment" contact Big Cypress Communications to request "Miami-Dade Air Rescue" for assistance.</li> <li>~ Assist injured employee with appropriate medical care.</li> <li>~ Use EMT's on Division for initial care.</li> <li>~ Follow medical protocol as outlined in ICS-206 &amp; IRPG Pgs 99-108</li> </ul>
DIVS ALL & IA	Driving & Traffic	<ul style="list-style-type: none"> <li>~ Practice "Defensive Driving" techniques traveling on all roads and city streets.</li> <li>~ Use spotters when backing.</li> <li>~ Honk horn to alert personnel when backing.</li> <li>~ Keep clutter off dash and inside cab.</li> <li>~ Follow Driving LCES (Lights, Chock blocks, Emergency brake, Seat belts.</li> <li>~ Always use headlights.</li> <li>~ Yield to pedestrians and bicycles.</li> <li>~ Observe posted speed limits.</li> <li>~ Use the 3 second rule for following distance when driving.</li> <li>~ Use chock blocks, turn wheels into hill.</li> <li>~ Avoid distractions (eating, cell phones, radio).</li> <li>~ Ensure that windshields are kept clean of dust and bugs.</li> </ul>
DIVS ALL & IA	Chain Saw Operations	<ul style="list-style-type: none"> <li>~ Follow "Hazard Tree Safety" guidelines, IRPG page 22</li> <li>~ Look up, Look down, Look around for hazard tree indicators.</li> <li>~ Only fell and buck trees within your expertise, and training.</li> <li>~ Follow "Procedural Felling Operations" on page 79 in IRPG.</li> <li>~ Do not fall trees during high wind events.</li> <li>~ Ensure proper use of all required PPE.</li> </ul>
DIVS ALL & IA	Firing Operations & Devices	<ul style="list-style-type: none"> <li>~ Only personnel trained in the use of each device will be authorized to use firing equipment.</li> <li>~ Ensure all personnel are aware of firing operation that may affect them.</li> <li>~ Wear appropriate PPE.</li> <li>~ Ensure aerial/ground ignition plans have been adequately developed and personnel are briefed.</li> </ul>
DIVS ALL & IA	Vehicle Operations in Inclement Weather	<ul style="list-style-type: none"> <li>~ Be alert for potential muddy and slick road surfaces.</li> <li>~ Avoid parking on soft shoulders along roads.</li> <li>~ Stay off secondary roads in wet conditions.</li> <li>~ Increase following distance on slick road surfaces.</li> <li>~ Send a scout to evaluate roads and work area prior to personnel engagement.</li> </ul>
DIVS ALL & IA	Fatigue & Over Exertion	<ul style="list-style-type: none"> <li>~ Drink 1 quart of water each hour during and after work.</li> <li>~ Rotate crews out of smokey areas.</li> <li>~ Set a reasonable work pace and allow adequate rest breaks while on the project.</li> <li>~ Stagger work crews start time to limit fatigue.</li> <li>~ Use buddy system to monitor personnel of heat related and fatigue issues.</li> <li>~ Follow work / rest guidelines.</li> </ul>

## INCIDENT SAFETY ANALYSIS 215a

DIVS G & Z & A	Heavy Equipment Operations	<ul style="list-style-type: none"> <li>~ Ensure communications are established with operators.</li> <li>~ Use hand signals if other communications are unavailable.</li> <li>~ Maintain a 50'-100' exclusion area around equipment and increase it to 1 1/2 times tree height when in timber.</li> <li>~ Use a spotter when backing.</li> <li>~ Avoid working below heavy equipment.</li> </ul>
DIVS ALL & IA	Communications	<ul style="list-style-type: none"> <li>~ Maintain communication with aviation resources, and suppression organization.</li> <li>~ Ensure all know frequency and protocol for contacting resources.</li> <li>~ Utilize the ICS 205.</li> <li>~ Utilize human repeaters when working in dead spots.</li> </ul>
DIVS ALL & IA	Wildlife	<ul style="list-style-type: none"> <li>~ Watch out for wildlife such as alligators, bear, deer, panthers, snakes</li> <li>~ Do not feed, handle or taunt wildlife</li> <li>~ Maintain safe distance and avoid contact ~Discard trash (food and containers) in proper disposal sites</li> <li>~ Secure pump location sites, watch for alligators, snakes and other wildlife</li> </ul>
DIVS ALL & IA	ATV/UTV use	<ul style="list-style-type: none"> <li>~ Ensure equipment is inspected and safe to use.</li> <li>~ Restrict UTV's to max width of 50" on ATV trails due to width and severe out sloped conditions.</li> <li>~ Ensure operator is trained and certified to operate.</li> <li>~ Ensure operator has proper PPE according to the Redbook and/or RMA.</li> <li>~ Question if it is mission critical.</li> </ul>
DIVS ALL & IA	Unburned Area/Reburn Potential	<ul style="list-style-type: none"> <li>~ Monitor weather.</li> <li>~ Base actions upon observed and predicted fire behavior.</li> <li>~ LCES Checklist (IRPG pg. 6).</li> <li>~ Look Up, Down and Around (IRPG pg. 2-3).</li> </ul>
DIVS ALL & IA	Extreme Fire Behavior	<ul style="list-style-type: none"> <li>~ Share weather observations with all personnel assigned to division.</li> <li>~ Establish "Trigger Points" to withdraw.</li> <li>~ Use "Risk Management" process prior to engaging in suppression actions, refer to page 1, IRPG.</li> </ul>
DIVS ALL & IA	Firefighter & Public Smoke Exposure	<ul style="list-style-type: none"> <li>~ Identify homes and structures with private parties remaining behind the evacuation.</li> <li>~ Identify personnel responsible for contacting private parties.</li> <li>~ Use warning lights and provide traffic control on roadways during smoky and night operations.</li> <li>~ Rotate crews out of smokey areas during firing and mop-up operations.</li> <li>~ Contact Communications when firing operations are initiated.</li> </ul>
DIVS A & Z	Structure Protection & HAZMAT	<ul style="list-style-type: none"> <li>~ Review "Wildland Urban Interface" Watch outs, IRPG page 12.</li> <li>~ Use "Structure Assessment" checklist, IRPG pages 12-16.</li> <li>~ Follow "HAZMAT Incident Operations" on pages 34-36 in IRPG.</li> </ul>
DIVS ALL & IA	Unplanned Public Interaction	<ul style="list-style-type: none"> <li>~ Be alert to non-fire personnel in areas with suppression personnel.</li> <li>~ All non-fire personnel will be escorted while on fireline.</li> <li>~ Post lookouts in areas with public to avoid conflicts with mission tasks.</li> <li>~ Ensure sufficient security to restrict access to exclusion area.</li> </ul>



## MEDICAL PLAN (ICS 206)

<b>1. Incident Name:</b> Cowbell Fire	<b>2. Operational Period:</b> Date From: 04-05-17 Date To: 04-05-17 Time From: 0800 Time To: 2000
--	--

3. Medical Aid Stations:				
Name	Location	Contact Number(s)/Frequency	Paramedics on Site?	
Gene-Paul Matson EMTF, MEDL	Medical ICP	434-665-0444	<input checked="" type="checkbox"/> Yes	<input type="checkbox"/> No
James Fortner EMTF, MEDL T	Medical ICP	202-236-3139	<input type="checkbox"/> Yes	<input checked="" type="checkbox"/> No
Jim Stout	Division Z	480-296-1566	<input checked="" type="checkbox"/> Yes	<input type="checkbox"/> No
Bob Bruington	IA	801-782-3585	<input type="checkbox"/> Yes	<input checked="" type="checkbox"/> No
Tracy Milakovic	Division A	719-850-0022	<input type="checkbox"/> Yes	<input checked="" type="checkbox"/> No
Matt Lancaster	Structure Protection Group	303-870-5248	<input type="checkbox"/> Yes	<input checked="" type="checkbox"/> No
Frank Able	TBD	423-595-1578	<input checked="" type="checkbox"/> Yes	<input type="checkbox"/> No

4. Transportation (indicate air or ground):				
Ambulance Service	Location	Contact Number(s)/Frequency	Level of Service	
Collier County EMS (ground)	Everglades City (Medic 61)	911	<input checked="" type="checkbox"/> ALS	<input type="checkbox"/> BLS
Collier County Med-Flight (air)	Naples Airport	911	<input checked="" type="checkbox"/> ALS	<input type="checkbox"/> BLS
5HQ Bell 205 (air) Medivac Aircraft	Oasis Heli-base	168.3250 (A/G 85)	<input type="checkbox"/> ALS	<input checked="" type="checkbox"/> BLS

5. Hospitals:							
Hospital Name	Address	Contact Number(s)	Travel Time		Trauma Center	Burn Center	Helipad
			Air	Ground			
Physicians Regional Collier Blvd	8300 Collier Blvd. Naples, FL 34114 Lat:26°6'18.7884"/Long: -81°41'6.3486"	239-354-6000 (Main) 239-354-6190 (ER)	15	50	<input type="checkbox"/> Yes Level: _____	<input type="checkbox"/> Yes <input checked="" type="checkbox"/> No	<input checked="" type="checkbox"/> Yes <input type="checkbox"/> No
Physicians Regional Pine Ridge	6101 Pine Ridge Road, Naples 34119 Lat:26°12'49.9752"/Long: -81°43'57.2592"	239-348-4000 (Main) 239-304-4748 (ER)	15	50	<input type="checkbox"/> Yes Level: _____	<input type="checkbox"/> Yes <input checked="" type="checkbox"/> No	<input checked="" type="checkbox"/> Yes <input type="checkbox"/> No
Naples Community Hospital	350 7 <sup>th</sup> Street North, Naples 34102 Lat:26°9'2.7498"/Long: -81°47'54.4164"	239-513-7709 (Main) 239-436-5151 (ER)	15	60	<input checked="" type="checkbox"/> Yes Level: <u>2</u>	<input type="checkbox"/> Yes <input checked="" type="checkbox"/> No	<input checked="" type="checkbox"/> Yes <input type="checkbox"/> No
Jackson Memorial Hospital	1611 NW 12 Avenue, Miami Lat:26°12'49.9752"/Long: -81°43'57.2592"	305-585-1111 (Main) 305-585-6910 (ER)	20	60	<input checked="" type="checkbox"/> Yes Level: <u>1</u>	<input checked="" type="checkbox"/> Yes <input type="checkbox"/> No	<input checked="" type="checkbox"/> Yes <input type="checkbox"/> No
Kendal Regional Medical Center	11750 SW 40 <sup>th</sup> St., Miami 33175 Lat:25°43'54.951"/Long: -80°23'8.8722"	305-223-3000 (Main) 305-227-5544 (ER)	20	50	<input checked="" type="checkbox"/> Yes Level: <u>1</u>	<input type="checkbox"/> Yes <input checked="" type="checkbox"/> No	<input checked="" type="checkbox"/> Yes <input type="checkbox"/> No

6. Special Medical Emergency Procedures:
<ul style="list-style-type: none"> <li>Patient or nearest responder notifies Group Supervisor who will respond to the scene and become the "incident within an incident" (IWI) commander.</li> <li><b>Group Supervisor will notify nearest medical responder and ICP-Communications</b> of the incident and "Nine Line" report attached to this 206 or page 108 of the IRPG.</li> </ul> <p>Call Big Cypress Communications if it is determined that <b>air hoist capability or snake bite treatment</b> is required. Miami-Dade Air Rescue will be used for an air hoist rescue and also for snake bite treatment. Communications will advise the 911 dispatcher for the helicopter to communicate through Big Cypress Dispatch.</p> <p>Note: If possible, give coordinates in aviation format – Degrees, Decimal, Minutes</p> <p><input type="checkbox"/> Check box if aviation assets are utilized for rescue. If assets are used, coordinate with Air Operations.</p>

<b>7. Prepared by</b> (Medical Unit Leader): Name: Gene-Paul Matson/James P. Fortner(T) Signature: <i>James P. Fortner</i>	<b>8. Approved by</b> (Safety Officer): Name: Ken Gordon Signature: <i>Kenneth R. Gordon</i>
--	--

ICS 206	IAP Page _____	Date/Time: 04/05/2017
---------	----------------	-----------------------

## INCIDENT RADIO COMMUNICATIONS PLAN (ICS 205)

3. Operational Period: DAY									
Date/Time From: 04/04/2017 0800			Date/Time To: 04/04/2017 2000						
Zone Group	Ch #	Function	Assignment	RX Freq	RX Tone/NAC	TX Freq	TX Tone/NAC	Mode (A,D, or M)	Remarks
	1	CARNS RPT		172.4250	1035	170.1000	1035	D	Talk Group 1
	2	OASIS RPT	ALL DIVISIONS	172.4250	1035	171.6250	1035	D	Talk Group 1
	3	BCY LCL		166.7750	No Tone	166.7750	No Tone	A	
	4	BICY TAC 1	Division A	168.6000	No Tone	168.6000	No Tone	A	
	5	BICY LCL 2	Division G	168.2500	No Tone	168.2500	No Tone	A	
	6	A/G 59	Initial Attack	169.1125	No Tone	169.1125	No Tone	A	
	7	Panther RPT	ALL DIVISIONS	164.6250	1188	163.1500	1188	D	Talk Group 1
	8	PANTHER TAC 1	DIVISION Z	166.7500	No Tone	166.7500	No Tone	A	
	9	PANTHER TAC 2	Initial Attack	166.8250	No Tone	166.8250	No Tone	A	
	10	A/G 85	ALL DIVISIONS	168.3250	No Tone	168.3250	No Tone	A	
	11	Everglades TAC 1	Structure Protection / Parliament Misc.	166.7250	0659	166.7250	0659	D	Talk Group 1
	12	A/G 44		167.6250	No Tone	167.6250	No Tone	A	
	13	CMD 13		168.7000	No Tone	170.9750	110.9	A	
	14	A/G	ALL DIVISIONS	167.9500	No Tone	167.9500	No Tone	A	
	15	BCYFLTRP	ALL DIVISIONS	169.7250	1514	163.3875	1738	D	
	16	AIR GUARD		168.6250	No Tone	168.6250	110.9	A	
Name: GEORGE ROSENTHAL				Signature: /s/ George Rosenthal					
				Date/Time: 04/04/2017 1035					



**To: All Incident Personnel, Cowbell Fire**

As Southern Area Type II Incident Commander, I am committed to a policy of “zero tolerance” of inappropriate behavior during incident operations. Any form of harassment, discriminatory practices, or disrespectful behavior will not be tolerated. Known or reported acts will be dealt with appropriately.

I am particularly concerned about the perception that alcohol has a place in any of the Incident facilities. It is not appropriate to indulge in alcoholic beverages during any fire assignment.

The Teams from the Southern Region have a team expectation of “NO ALCOHOL” from the time of dispatch until the time of physical release from the Incident. Members of the Team voluntarily comply with this expectation; all incident personnel will be expected to do so also.

We endorse, support, and expect an attitude of mutual respect for all Incident personnel and the public we serve. We also, endorse the attitude and work ethic that places “Safety First, every time on every Incident.” We expect nothing less.

/s/ Steve Parrish  
Incident Commander  
Southern Area Gold Team

## Finance Notes

Please turn in CTRs and Equipment Shift Tickets **daily**. A box for these is located on the trailer near the IAPs during morning briefing, or they may be turned in at Finance any time during the day. Please make sure you include your name, **CORRECT** request number (i.e., O-1, E-2, C-3, A-4.1), and date on your documents.

**All Casual Hires** (ADs): Please ensure that the Time Unit has your mailing address, phone number, casual hire form, and ECI number.

**Initial Attack:** For those who are on the new fires, note the actual time you work on the new fires. We must track costs for those separately.

**ALL RESOURCES – please check in at Finance if you have not already done so.**

### **Following people – See Finance**

Marty Angelo

Nathan Dewhurst

James Fortner

Lucas Hurley

Eric Moore

Ronald Rockis

David Sechrist – Wildland Fire

Saul Urban – Wildland Fire

## TRAINING MESSAGE

APRIL 5

Trainees, please check in with the Training Specialist as soon as possible. The process takes only a few minutes to complete if you come prepared with the names and addresses for your home unit training officer and incident trainer/evaluator. Bring your Position Task Book and your 'Red' card, as well. I'm currently located in the Big Cypress FOC with Check-in and DMOB.

### **Training Watch Out**

**It's Day 2 of your assignment and your trainer  
still can't remember your name.**

“Whenever you are asked if you can do a job, tell ‘em, ‘Certainly I can!’ Then get busy and find out how to do it”. Theodore Roosevelt 1858-1919

John Davis  
TNSP



## Southern Area Incident Management Gold Team Fire Information

Looking for more information on the Cowbell and Parliament Fires in Big Cypress National Preserve? Follow us on social media:



InciWeb <https://inciweb.nwcg.gov/unit/2296>



Twitter <https://twitter.com/BigCypressNPS>



Facebook <https://www.facebook.com/BigCypressNPS>

You can also call us between 8 a.m. and 8 p.m. at 305-204-6659.

For general information about the Big Cypress National Preserve, visit <https://www.nps.gov/bicy> or call 239-695-1107.

**WE WANT YOUR PICTURES AND VIDEOS!**

Please email us your videos and pictures at [BICYfireinfo@gmail.com](mailto:BICYfireinfo@gmail.com). We love to post them on social media and our information boards.

81°28'W 81°26'W 81°24'W 81°22'W 81°20'W 81°18'W 81°16'W 81°14'W 81°12'W 81°10'W 81°8'W 81°6'W 81°4'W 81°2'W 81°0'W 80°58'W 80°56'W 80°54'W

# Cowbell Fire

## Transportation Map

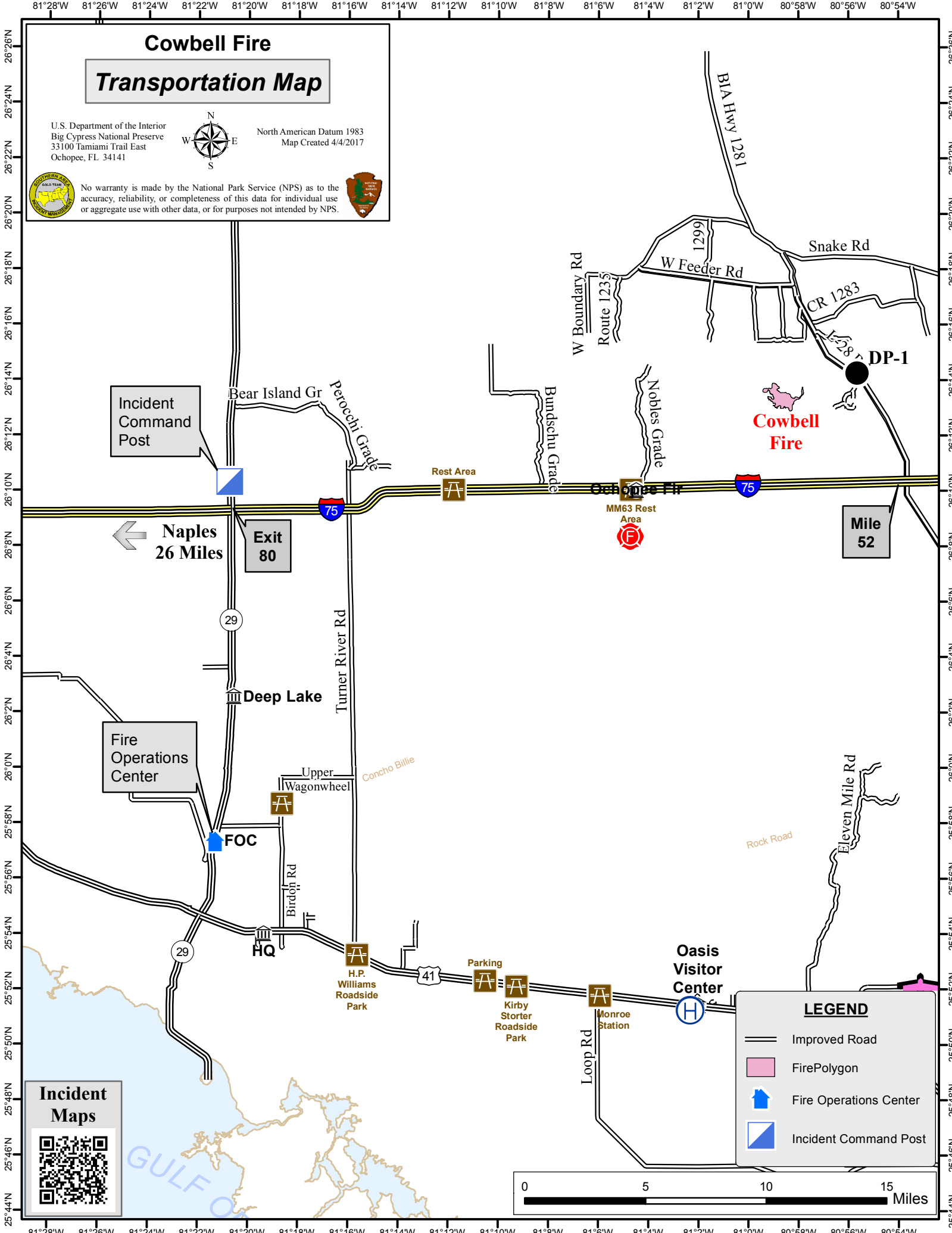
U.S. Department of the Interior  
Big Cypress National Preserve  
33100 Tamiami Trail East  
Ochopee, FL 34141



North American Datum 1983  
Map Created 4/4/2017



No warranty is made by the National Park Service (NPS) as to the accuracy, reliability, or completeness of this data for individual use or aggregate use with other data, or for purposes not intended by NPS.



Incident Command Post

Naples 26 Miles

Exit 80

Fire Operations Center

FOC

HQ

H.P. Williams Roadside Park

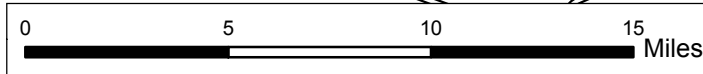
Parking

Kirby Storter Roadside Park

Oasis Visitor Center

### LEGEND

- Improved Road
- FirePolygon
- Fire Operations Center
- Incident Command Post

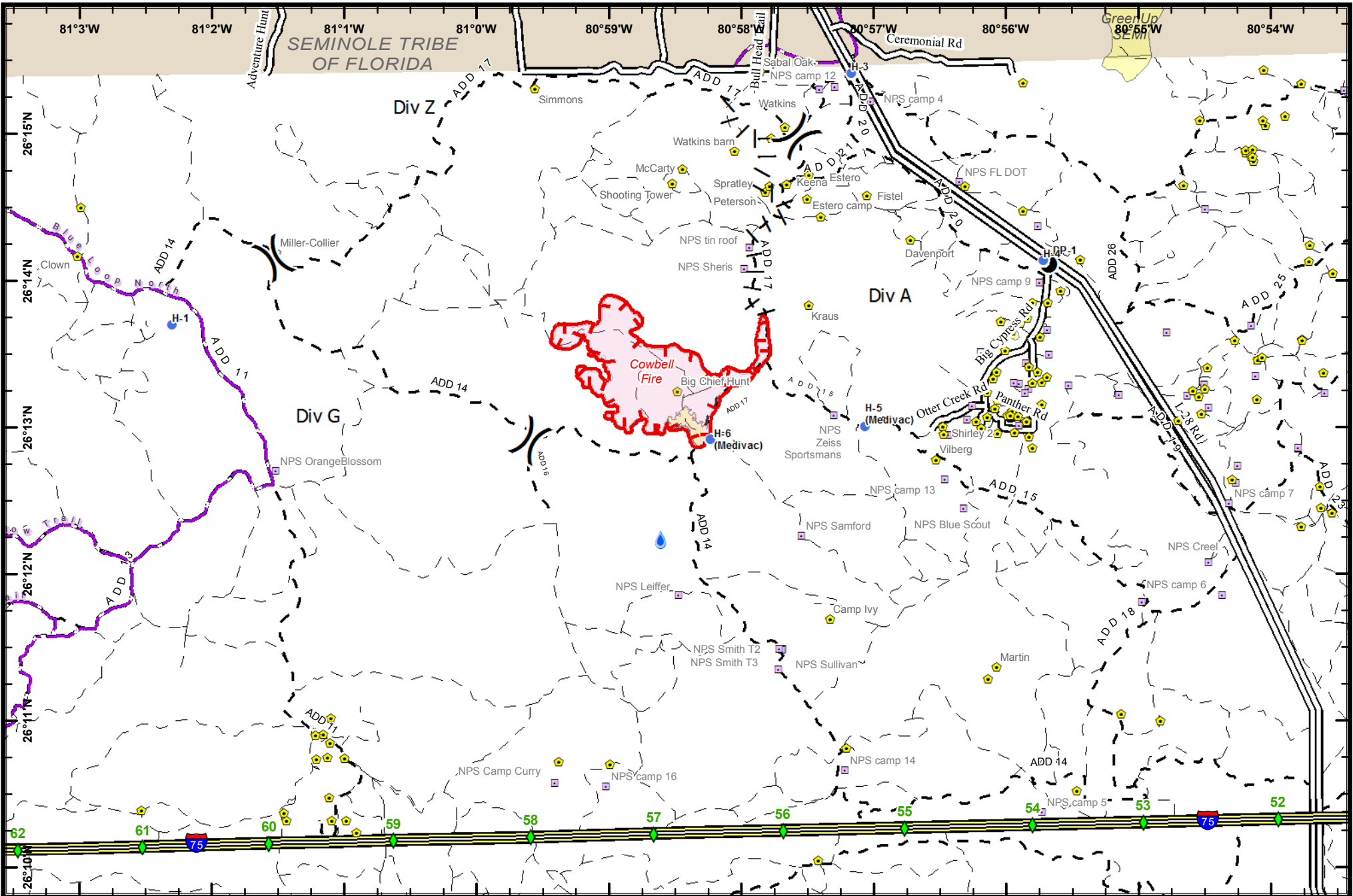


**Incident Maps**

26°26'N 26°24'N 26°22'N 26°20'N 26°18'N 26°16'N 26°14'N 26°12'N 26°10'N 26°8'N 26°6'N 26°4'N 26°2'N 26°0'N 25°58'N 25°56'N 25°54'N 25°52'N 25°50'N 25°48'N 25°46'N 25°44'N

26°26'N 26°24'N 26°22'N 26°20'N 26°18'N 26°16'N 26°14'N 26°12'N 26°10'N 26°8'N 26°6'N 26°4'N 26°2'N 26°0'N 25°58'N 25°56'N 25°54'N 25°52'N 25°50'N 25°48'N 25°46'N 25°44'N

81°28'W 81°26'W 81°24'W 81°22'W 81°20'W 81°18'W 81°16'W 81°14'W 81°12'W 81°10'W 81°8'W 81°6'W 81°4'W 81°2'W 81°0'W 80°58'W 80°56'W 80°54'W



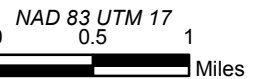
**Cowbell Fire**  
 FL-BCP-017033

**IAP Map**  
 April 5, 2017  
 Day Shift



- |                            |                      |                         |                                   |
|----------------------------|----------------------|-------------------------|-----------------------------------|
| ● Drop Point               | ■ Fire Perimeter     | ◆ Mile Marker           | --- Non-Designated Trail (closed) |
| ● Helispot                 | 💧 Hydro Station      | ▬ I-75                  | — Florida Trail                   |
| ┌─┐ Uncontrolled Fire Edge | 🏠 Private Structures | ▬ Improved Road         | ■ Seminole Tribe of Florida       |
| ┌─┐ Proposed Burnout       | 🏠 NPS Property       | --- Primary Buggy Trail |                                   |
| ■ Fire Polygon             |                      |                         |                                   |

449 Approximate Acres  
 and Fire Perimeter  
 as of 4/3/16 @ 1030



## PHONE LIST - COWBELL FIRE

Position	Name	Phone Number	Position	Name	Phone Number
<b>COMMAND</b>			<b>PLANNING</b>		
Incident Commander	Steve Parrish	850-567-9507	Chief	Dave Berens	601-319-6823
Incident Commander (t)	Lance Elmore	501-520-7276	Chief	Steve Moore	803-360-6956
Deputy Incident Commander	Marty Bentley	423-584-1682	Resource Unit Leader	Melonie Sellers	601-508-8997
Deputy Incident Commander (t)	Debbie Beard	850-524-9966	Resource Unit Leader	Carol O'Bryan	903-263-8704
Liaison Officer	Mike Wright	970-819-2890	Resource Unit Leader (t)	Jessica Hollingsworth	540-383-6531
Public Information	Susie Heisey	912-286-3110	Situation Unit Leader	Jeff DeMatteis	601-415-9080
Public Information	Michelle Burnett	803-920-6167	Fire Behavior Analyst	Gary Jarvis	251-288-1084
Public Information (t)	Donald Simon	910-975-1895	Fire Behavior Analyst (t)	Brenda Dale	906-280-3398
Safety Officer	Buddy Kelly	850-447-1344	IMET	John Pendergrast	240-499-6649
Safety Officer	Mark Sullivan	205-531-7183	GISS	Chris Evans	928-273-4203
Safety Officer (t)	Ken Gordon	850-688-4474	GISS	Melanie Hans	618-315-5404
Acting FMO	Byron Hart	850-264-9567	GISS (t)	Jeff Adams	361-205-4744
			Demob	Thomas Barrett	478-550-6372
<b>OPERATIONS</b>			Check In	Jeff Turner	865-684-0095
Planning Ops	Steve Weaver	828-360-2476	Check In (t)	Tonia Johnson	678-927-1791
Planning Ops (t)	Paul Varnedoe	423-650-2184	Training Specialist	John Davis	231-878-0074
Field Ops	Greg Brooks	828-421-5025	Compter Tech	Jerry Dronberger	479-747-7020
Field Ops (t)	Mike Davis	936-219-7743	Compter Tech	Rusty Brown	478-973-6231
Division A	Chad Cook	828-360-4985	<b>LOGISTICS</b>		
Division A (t)	Heath Thomas	501-208-7077	Chief	Willie Boston	770-328-3186
Division G	E.J. Bunzendahl	859-556-2347	Chief (t)	Tom Phillips	936-635-7154
Division Z	Tom Crews	252-216-6361	Deputy	Jerry Jussila	218-235-8983
Division Initial Attack	Kelly Cagle	336-302-0343	Deputy	Susan Cornett	903-930-5321
Division Parliament	UNSTAFFED		Supply Unit	Tom Piper	727-514-5513
Structure Protection Group	Ryan Vice	979-215-1936	Facilities Unit	Glen Bee	208-847-5507
Firing Group	Mary Owen	601-917-2860	Ground Support Unit Leader	Michael Howarth	936-414-2697
<b>AIR OPERATIONS</b>			Ordering Manager	Sherri Kite	850-209-2150
Air Operation Branch Director	Mike Rock	606-813-9750	Receiving & Distribution	Chris Combs	727-992-0046
Air Support Group Supervisor	Pete Kubiak	404-661-4819	Base Camp Manager	Mike Justus	
<b>FINANACE</b>			Communications	George Rosenthal	936-707-1832
Chief	Wanda Kelley	423-584-1472	Communications	Ron Regan	828-772-8514
Chief (t)	Holly Cyprian	928-919-3027	Comms Trailer		772-631-2573
Time Unit Leader	Laura Wilson	765-427-7564	Medical Unit Leader	Gene-Paul Matson	434-665-0444
Time Unit Leader (t)	Sherise Foster	919-943-7843	Medical Unit Leader (t)	James Fortner	202-236-3139
Comp/Claims	Terri McDonald	352-454-5385			
Equipment Time Recorder (t)	Donna Line	706-474-3216			
Personel Time Recorder	Sherise Foster	919-943-7843			
Personnel Time Recorder (t)	Gustavo Vallejo	423-457-7403			



<b>UNIT LOG</b>	1. Incident Name	2. Date Prepared	3. Time Prepared
4. Unit Name/Designators	5. Unit Leader (Name and Position)		6. Operational Period
7. Personnel Roster Assigned			
Name	ICS Position	Home Base	
8. Activity Log			
Time	Major Events		
9. Prepared by (Name and Position)			

## Medical Incident Report- "9 Line"

**FOR ALL MEDICAL EMERGENCIES: IDENTIFY ON SCENE INCIDENT COMMANDER BY NAME AND POSITION AND ANNOUNCE "MEDICAL EMERGENCY" TO INITIATE RESPONSE FROM IMT COMMUNICATIONS/DISPATCH.**

Use items one through nine to communicate situation to communications/dispatch.

**1. CONTACT COMMUNICATIONS/DISPATCH**

*Ex: "Communications, Div. Alpha. Stand-by for Priority Medical Incident Report." (If life threatening request designated frequency be cleared for emergency traffic.)*

**2. INCIDENT STATUS: Provide incident summary and command structure.**

Nature of Injury/Illness		<i>Describe the injury (Ex: Broken leg with bleeding)</i>
Incident Name		<i>Geographic Name + "Medical" (Ex: Trout Meadow Medical)</i>
Incident Commander		<i>Name of IC</i>
Patient Care		<i>Name of Care Provider (Ex: EMT Smith)</i>

**3. INITIAL PATIENT ASSESSMENT: Complete this section for each patient. This is only a brief, initial assessment. Provide additional patient info after completing this 9 Line Report.**

Number of Patients:	Male / Female	Age:	Weight:
Conscious? <input type="checkbox"/> YES <input type="checkbox"/> NO = MEDEVAC!			
Breathing? <input type="checkbox"/> YES <input type="checkbox"/> NO = MEDEVAC!			
Mechanism of Injury: <i>What caused the injury?</i>			
Lat/Long (Datum WGS84)			

**4. SEVERITY OF EMERGENCY, TRANSPORT PRIORITY**

SEVERITY	TRANSPORT PRIORITY
<input type="checkbox"/> <b>URGENT-RED</b> Life threatening injury or illness. <i>Ex: Unconscious, difficulty breathing, bleeding severely, 2° – 3° burns more than 4 palm sizes, heat stroke, disoriented.</i>	Ambulance or MEDEVAC helicopter. Evacuation need is IMMEDIATE.
<input type="checkbox"/> <b>PRIORITY-YELLOW</b> Serious Injury or illness. <i>Ex: Significant trauma, not able to walk, 2° – 3° burns not more than 1-2 palm sizes.</i>	Ambulance or consider air transport if at remote location. Evacuation may be DELAYED.
<input type="checkbox"/> <b>ROUTINE-GREEN</b> Not a life threatening injury or illness. <i>Ex: Sprains, strains, minor heat-related illness.</i>	Non-Emergency. Evacuation considered Routine of Convenience.

**5. TRANSPORT PLAN:**

Air Transport: (Agency Aircraft Preferred)

<input type="checkbox"/> Helispot	<input type="checkbox"/> Short-haul/Hoist	<input type="checkbox"/> Life Flight	<input type="checkbox"/> Other
Ground Transport:			
<input type="checkbox"/> Self-Extract	<input type="checkbox"/> Carry-Out	<input type="checkbox"/> Ambulance	<input type="checkbox"/> Other

**6. ADDITIONAL RESOURCE/EQUIPMENT NEEDS:**

<input type="checkbox"/> Paramedic/EMT(s)	<input type="checkbox"/> Crew(s)	<input type="checkbox"/> SKED/Backboard/C-Collar
<input type="checkbox"/> Burn Sheet(s)	<input type="checkbox"/> Oxygen	<input type="checkbox"/> Trauma Bag
<input type="checkbox"/> Medication(s)	<input type="checkbox"/> IV/Fluid(s)	<input type="checkbox"/> Cardiac Monitor/AED
<input type="checkbox"/> Other (i.e. splints, rope rescue, wheeled litter)		

**7. COMMUNICATIONS:**

Function	Channel Name/Number	Receive (Rx)	Tone/NAC *	Transmit (Tx)	Tone/NAC *
<i>Ex: Command</i>	<i>Forest Rpt, Ch. 2</i>	<i>168.3250</i>	<i>110.9</i>	<i>171.4325</i>	<i>110.9</i>
COMMAND					
AIR-TO-GRND					
TACTICAL					

\*(NAC for digital radio system)

**8. EVACUATION LOCATION:**

Lat/Long (Datum WGS84) <i>EX: N 40 42.45' x W 123 03.24'</i>	
Patient's ETA to Evacuation Location:	
Helispot/Extraction Size and Hazards:	

**9. CONTINGENCY:**

<b>Considerations:</b> <i>If primary options fail, what actions can be implemented in conjunction with primary evacuation method? Be thinking ahead...</i>	<b>REMEMBER:</b> <b>Confirm ETA's of resources ordered Act according to your level of training Be Alert. Keep Calm. Think Clearly. Act Decisively.</b>
--	--