

81°28'W 81°26'W 81°24'W 81°22'W 81°20'W 81°18'W 81°16'W 81°14'W 81°12'W 81°10'W 81°8'W 81°6'W 81°4'W 81°2'W 81°0'W 80°58'W 80°56'W 80°54'W

Cowbell Fire

Transportation Map

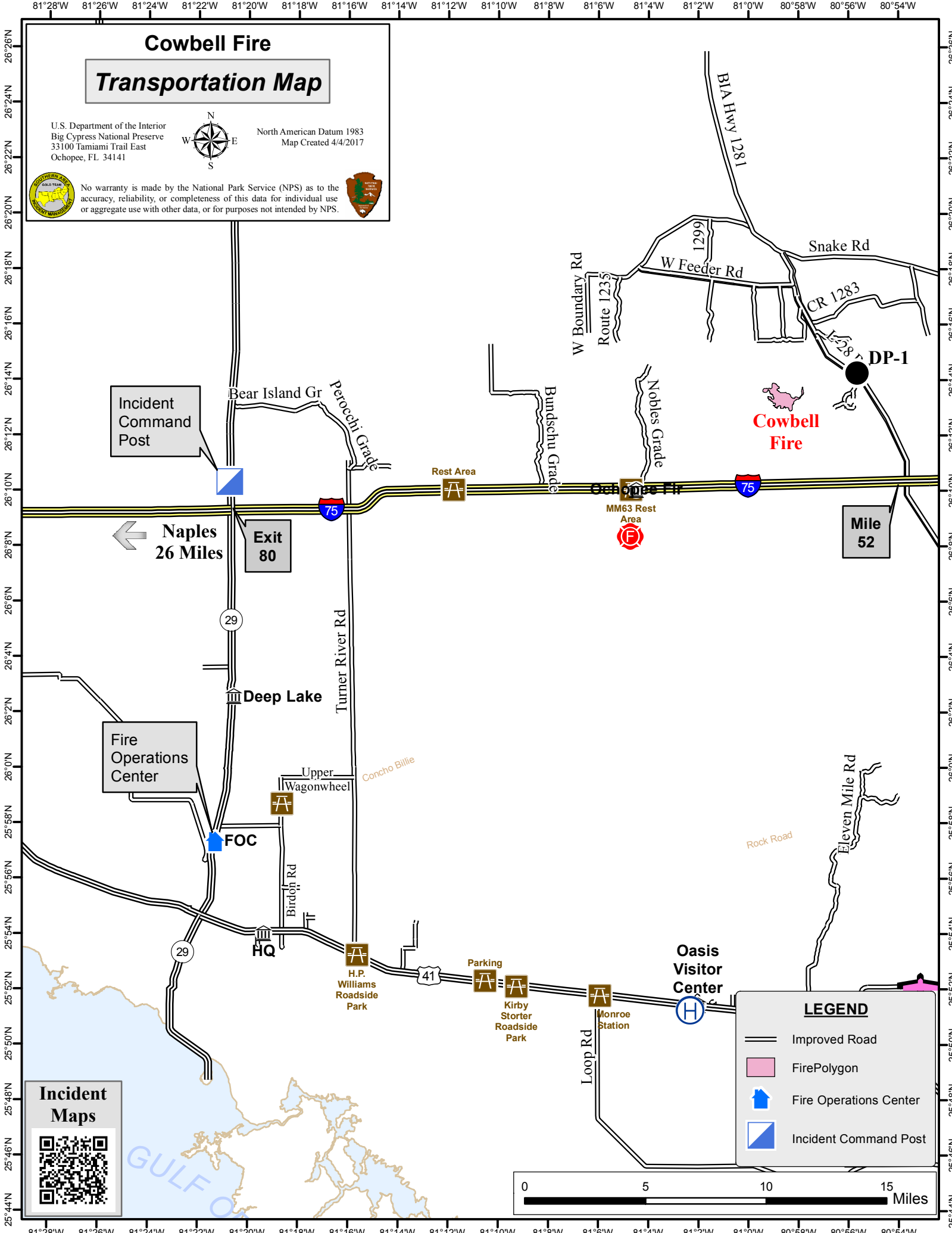
U.S. Department of the Interior
Big Cypress National Preserve
33100 Tamiami Trail East
Ochopee, FL 34141



North American Datum 1983
Map Created 4/4/2017



No warranty is made by the National Park Service (NPS) as to the accuracy, reliability, or completeness of this data for individual use or aggregate use with other data, or for purposes not intended by NPS.



Incident Command Post

Naples
26 Miles

Exit 80

Fire Operations Center

FOC

HQ

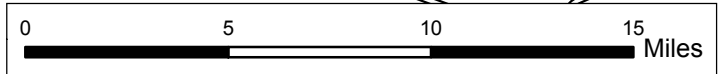
Oasis Visitor Center

Cowbell Fire

Mile 52

LEGEND

- Improved Road
- FirePolygon
- Fire Operations Center
- Incident Command Post



Incident Maps

26°26'N 26°24'N 26°22'N 26°20'N 26°18'N 26°16'N 26°14'N 26°12'N 26°10'N 26°8'N 26°6'N 26°4'N 26°2'N 26°0'N 25°58'N 25°56'N 25°54'N 25°52'N 25°50'N 25°48'N 25°46'N 25°44'N

81°28'W 81°26'W 81°24'W 81°22'W 81°20'W 81°18'W 81°16'W 81°14'W 81°12'W 81°10'W 81°8'W 81°6'W 81°4'W 81°2'W 81°0'W 80°58'W 80°56'W 80°54'W