

Cowbell Fire

FL-BCP-017033

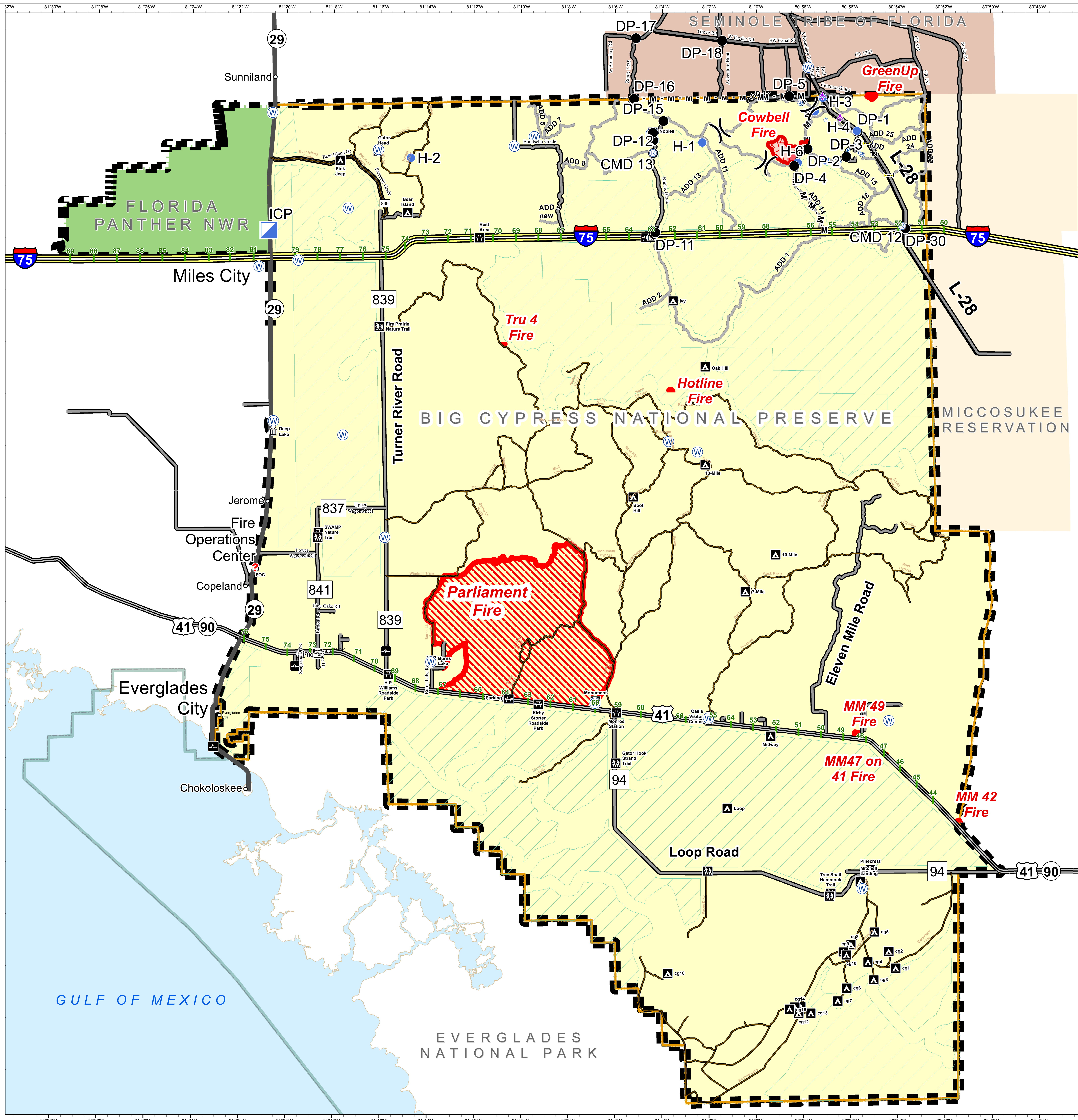
Briefing Initial Attack Map April 9, 2017 Day Shift

647 acres
Approximate Perimeter
as of 4/8/2017 @ 0949 hrs.

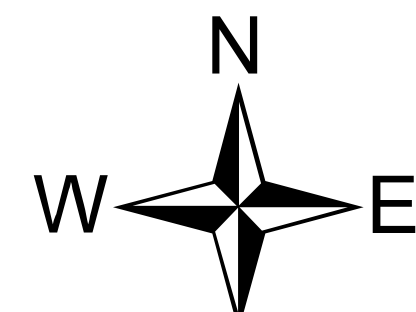


Legend

- Initial Attack Boundary
- Unknown
- Aerial Hazard
- Drop Point
- Helispot
- Incident Command Post
- Pump
- Repeater
- Water Source
- Uncontrolled Fire Edge
- Completed Line
- M - M - Mastication Line
- Fire Polygon
- Other 2017 Wildfires
- City
- Campground
- Canoe Access
- Office
- Pump-out Station
- Park/Rest Area
- Trailhead
- Bridge Location
- Primary Buggy Trail
- Eligible for Wilderness
- Miccosukee Reservation
- Seminole Tribe of Florida
- Big Cypress National Preserve
- Florida Panther NWR
- Everglades National Park



NAD83 UTM 17



0 2 4 Miles