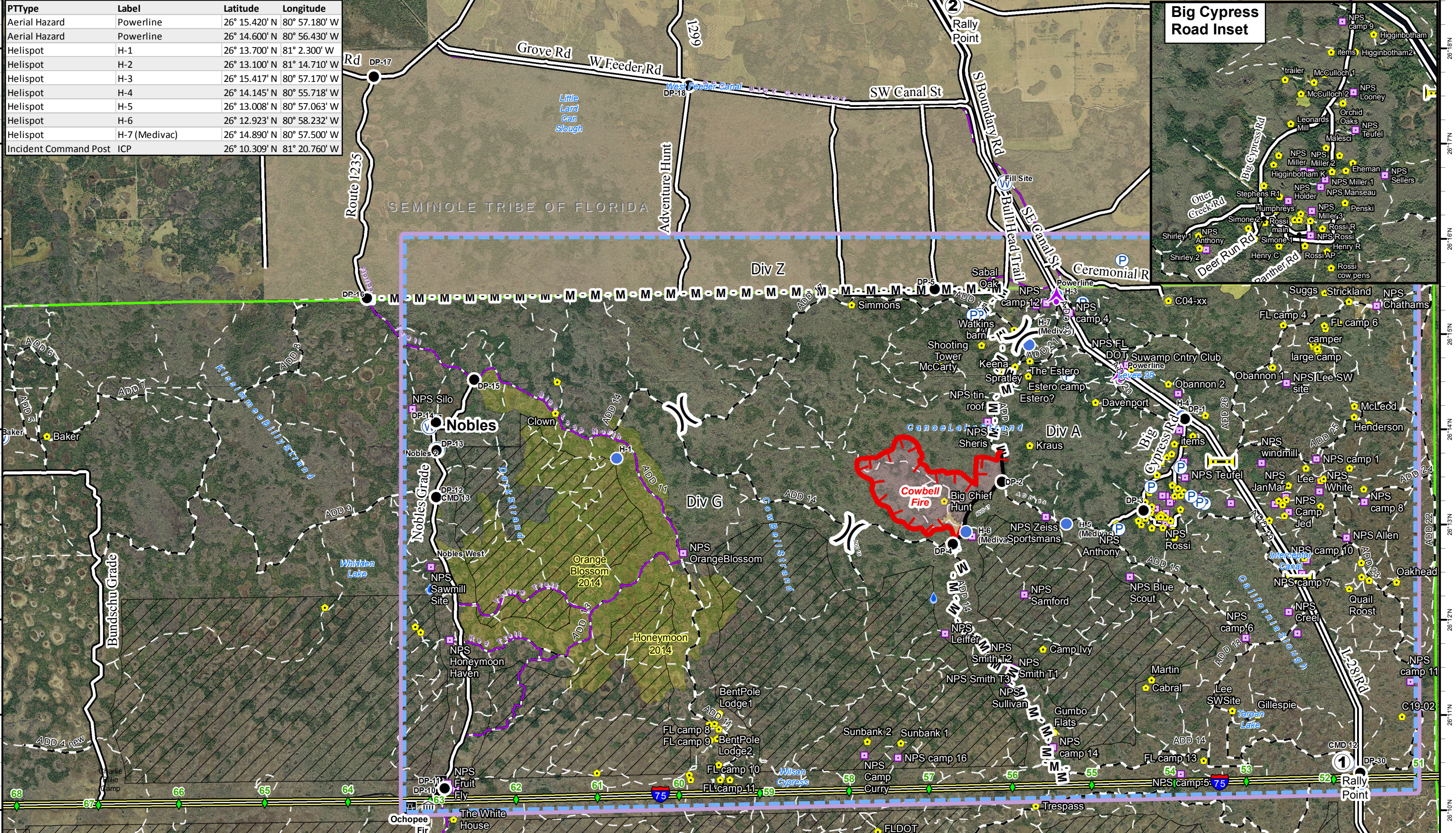
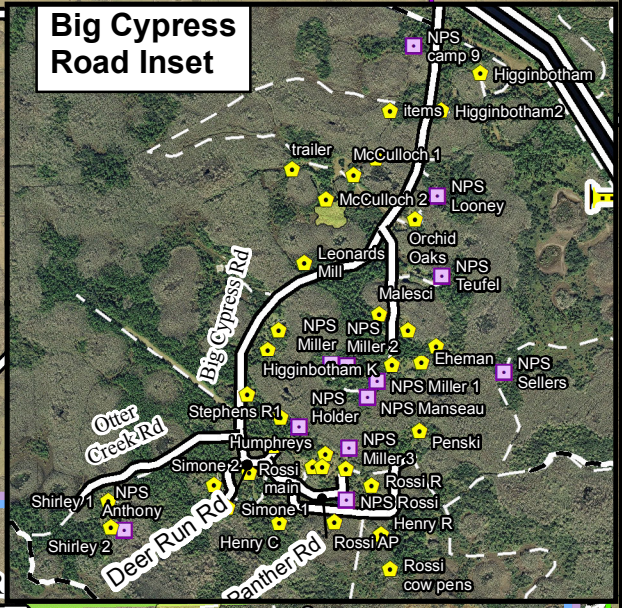


PType	Label	Latitude	Longitude
Aerial Hazard	Powerline	26° 15.420' N	80° 57.180' W
Aerial Hazard	Powerline	26° 14.600' N	80° 56.430' W
Helispot	H-1	26° 13.700' N	81° 2.300' W
Helispot	H-2	26° 13.100' N	81° 14.710' W
Helispot	H-3	26° 15.417' N	80° 57.170' W
Helispot	H-4	26° 14.145' N	80° 55.718' W
Helispot	H-5	26° 13.008' N	80° 57.063' W
Helispot	H-6	26° 12.923' N	80° 58.232' W
Helispot	H-7 (Medivac)	26° 14.890' N	80° 57.500' W
Incident Command Post	ICP	26° 10.309' N	81° 20.760' W



Cowbell Fire
FL-BCP-017033

Operations Map
April 9, 2017
0800



Legend	1 Rally Point	A Aerial Hazard	P Pump	U Uncontrolled Fire Edge	H Historic Fire Perimeter	B Bridge Location	S Seminole Tribe of Florida
(X) Division	● Drop Point	R Repeater	W Water Source	— Completed Line	W Hydro Station	I-75 I - 75	B BICY Preserve
M - Mastication Line	● Helispot	W Water Source	◆ Mile Marker	M - Mastication Line	◆ Mile Marker	I Improved Road	T TFR
				■ Fire Polygon		— Primary Buggy Trail	— Eligible for Wilderness
						— Non-Designated Trail (closed)	
						— Florida Trail	

