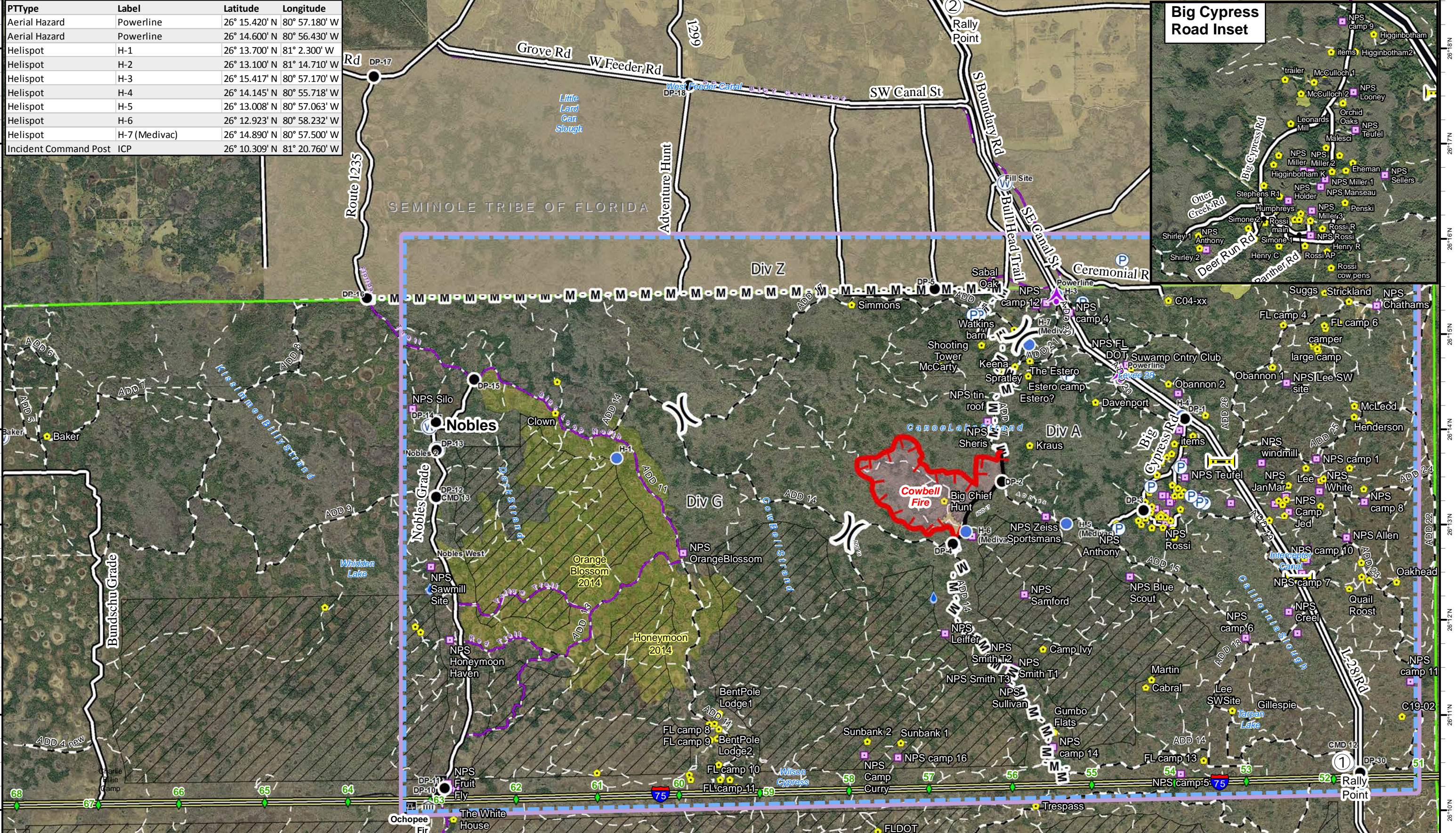
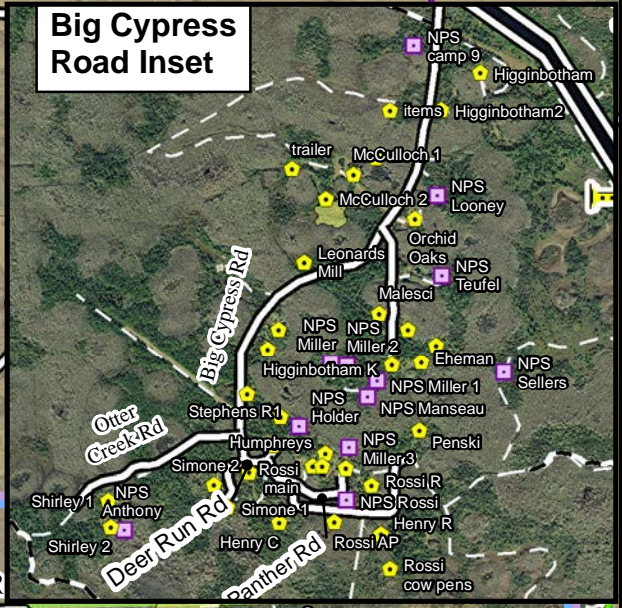


PType	Label	Latitude	Longitude
Aerial Hazard	Powerline	26° 15.420' N	80° 57.180' W
Aerial Hazard	Powerline	26° 14.600' N	80° 56.430' W
Helispot	H-1	26° 13.700' N	81° 2.300' W
Helispot	H-2	26° 13.100' N	81° 14.710' W
Helispot	H-3	26° 15.417' N	80° 57.170' W
Helispot	H-4	26° 14.145' N	80° 55.718' W
Helispot	H-5	26° 13.008' N	80° 57.063' W
Helispot	H-6	26° 12.923' N	80° 58.232' W
Helispot	H-7 (Medivac)	26° 14.890' N	80° 57.500' W
Incident Command Post	ICP	26° 10.309' N	81° 20.760' W



**Cowbell Fire**  
**FL-BCP-017033**

**Operations Map**  
**April 9, 2017**  
**0800**



**Legend**

- ① Rally Point
- ⚡ Aerial Hazard
- Ⓟ Pump
- Ⓜ Division
- Drop Point
- Ⓜ - Mastication Line
- Helispot
- 🔴 Uncontrolled Fire Edge
- 🟡 Historic Fire Perimeter
- 🚰 Bridge Location
- Completed Line
- 💧 Hydro Station
- 🚧 I - 75
- 🛣 Improved Road
- 🚰 Repeater
- 🌊 Water Source
- 🚰 Fire Polygon
- Primary Buggy Trail
- Non-Designated Trail (closed)
- Florida Trail
- 🚰 Eligible for Wilderness
- 🟡 Seminole Tribe of Florida
- 🟢 BICY Preserve
- 🟠 TFR

