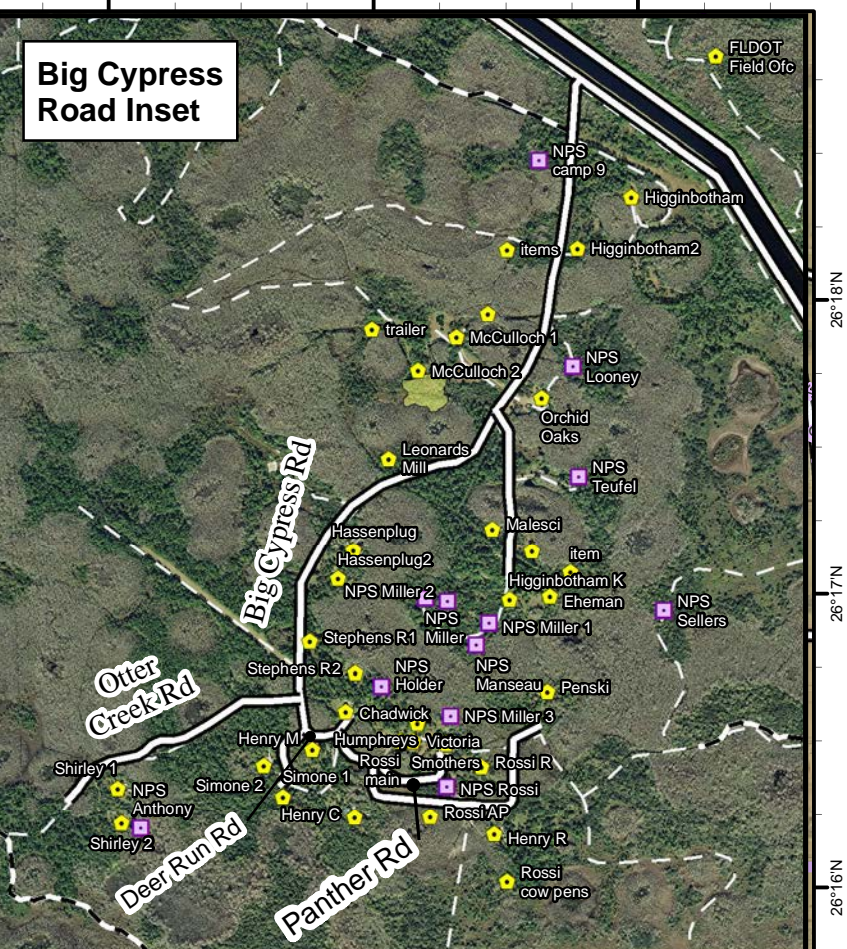
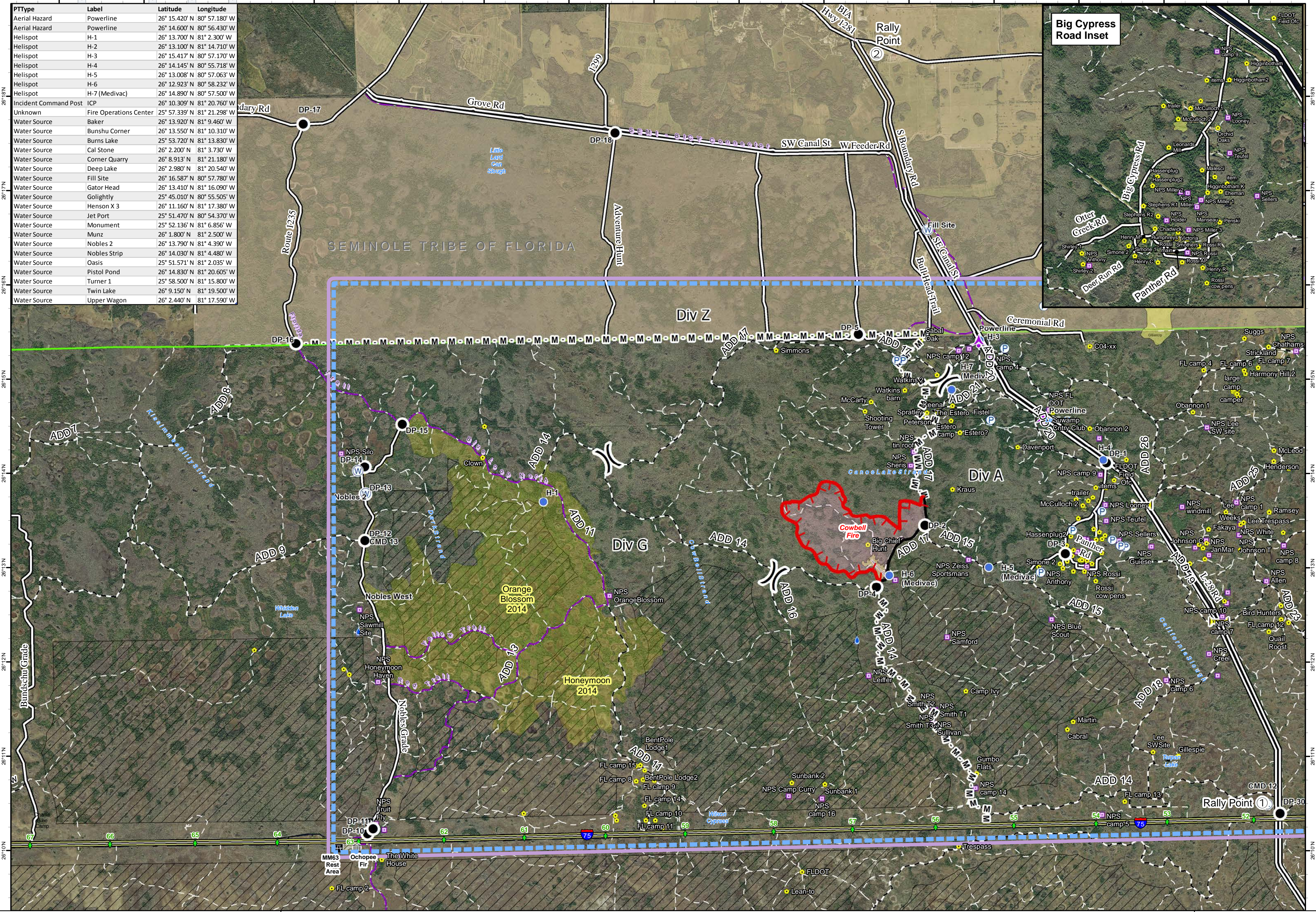


PTType	Label	Latitude	Longitude
Aerial Hazard	Powerline	26° 15.420' N	80° 57.180' W
Aerial Hazard	Powerline	26° 14.600' N	80° 56.430' W
Helispot	H-1	26° 13.700' N	81° 2.300' W
Helispot	H-2	26° 13.100' N	81° 14.710' W
Helispot	H-3	26° 15.417' N	80° 57.170' W
Helispot	H-4	26° 14.145' N	80° 55.718' W
Helispot	H-5	26° 13.008' N	80° 57.063' W
Helispot	H-6	26° 12.923' N	80° 58.232' W
Helispot	H-7 (Medivac)	26° 14.890' N	80° 57.500' W
Incident Command Post	ICP	26° 10.309' N	81° 20.760' W
Unknown	Fire Operations Center	25° 57.339' N	81° 21.298' W
Water Source	Baker	26° 13.920' N	81° 9.460' W
Water Source	Bunshu Corner	26° 13.550' N	81° 10.310' W
Water Source	Burns Lake	25° 53.720' N	81° 13.830' W
Water Source	Cal Stone	26° 2.200' N	81° 3.730' W
Water Source	Corner Quarry	26° 8.913' N	81° 21.180' W
Water Source	Deep Lake	26° 2.980' N	81° 20.540' W
Water Source	Fill Site	26° 16.587' N	80° 57.780' W
Water Source	Gator Head	26° 13.410' N	81° 16.090' W
Water Source	Golightly	25° 45.010' N	80° 55.505' W
Water Source	Henson X 3	26° 11.160' N	81° 17.380' W
Water Source	Jet Port	25° 51.470' N	80° 54.370' W
Water Source	Monument	25° 52.136' N	81° 6.856' W
Water Source	Munz	26° 1.800' N	81° 2.500' W
Water Source	Nobles 2	26° 13.790' N	81° 4.390' W
Water Source	Nobles Strip	26° 14.030' N	81° 4.480' W
Water Source	Oasis	25° 51.571' N	81° 2.035' W
Water Source	Pistol Pond	26° 14.830' N	81° 20.605' W
Water Source	Turner 1	25° 58.500' N	81° 15.800' W
Water Source	Twin Lake	26° 9.150' N	81° 19.500' W
Water Source	Upper Wagon	26° 2.440' N	81° 17.590' W



Cowbell Fire
FL-BCP-017033

Operations Map
April 9, 2017
0800

647 acres
 Approximate Perimeter
 as of 4/8/2017 @ 0949 hrs.

Legend	
① Rally Point	● Drop Point
⌋ Division	● Helispot
⚡ Aerial Hazard	Ⓟ Pump
	Ⓡ Repeater
	Ⓜ Water Source
— Uncontrolled Fire Edge	— Completed Line
— M - M Mastication Line	— Fire Polygon
	— Historic Fire Perimeter
💧 Hydro Station	🚧 Bridge Location
📍 Mile Marker	— I - 75
	— Improved Road
— Primary Buggy Trail	— Non-Designated Trail (closed)
	— Florida Trail
	▨ Eligible for Wilderness
	— Seminole Tribe of Florida
	— BICY Preserve
	— TFR

