

Cowbell Fire

FL-BCP-017033

Briefing Initial Attack Map April 10, 2017 0800

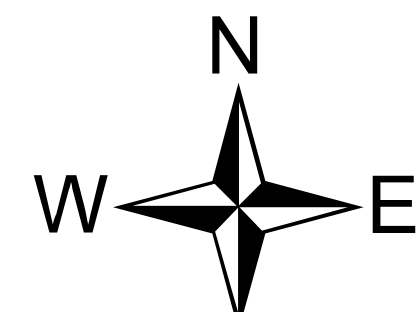
1,412 acres
Approximate Perimeter
as of 4/9/2017 @ 0900 hrs.



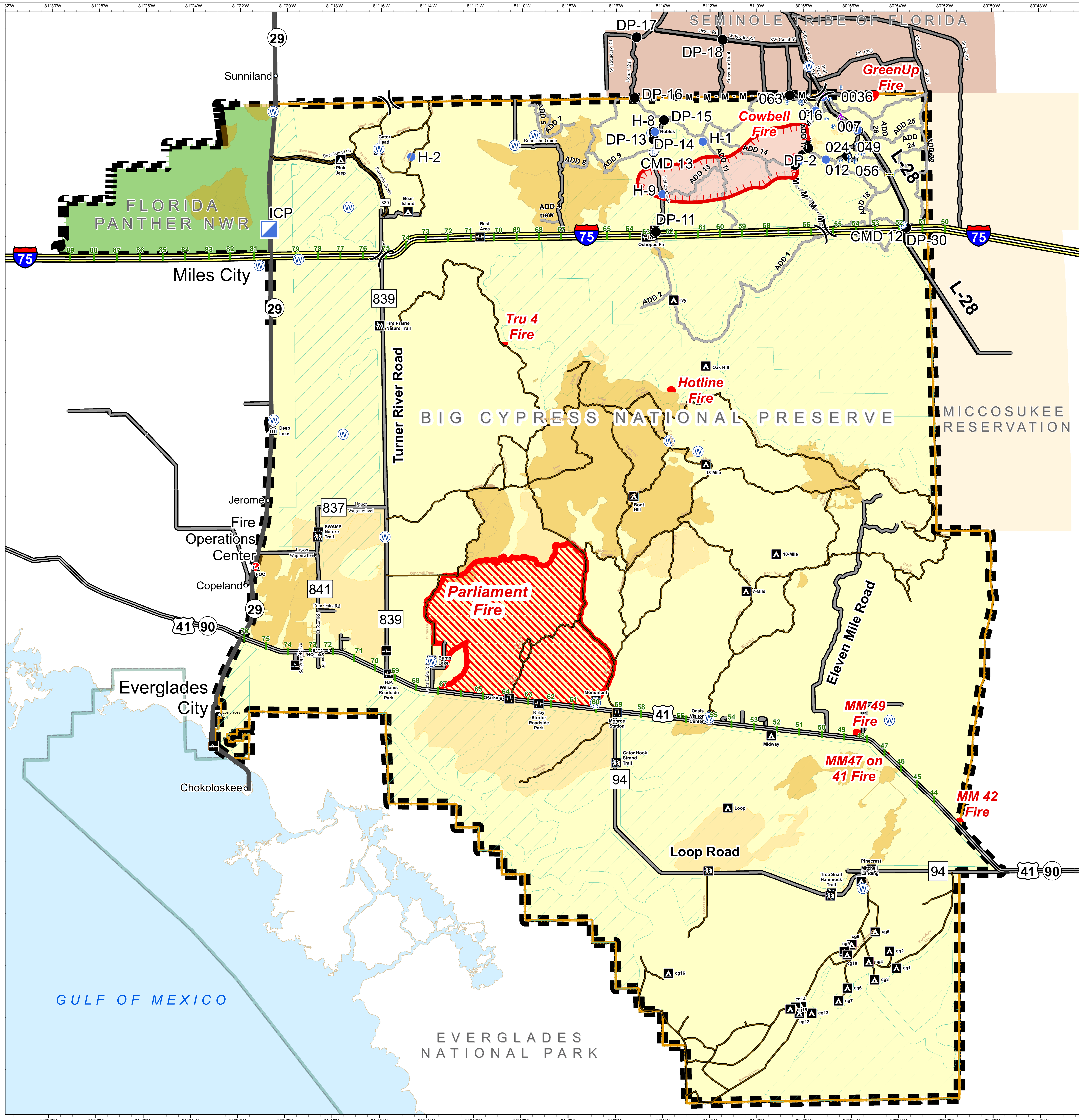
Legend

- Initial Attack Boundary
- Unknown
- Aerial Hazard
- Drop Point
- Helispot
- Incident Command Post
- Pump
- Repeater
- Water Source
- Uncontrolled Fire Edge
- Completed Line
- M - M - Mastication Line
- Fire Polygon
- Other 2017 Wildfires
- Fire History 2015 & 2016
- City
- Campground
- Canoe Access
- Office
- Pump-out Station
- Park/Rest Area
- Trailhead
- Bridge Location
- Primary Buggy Trail
- Eligible for Wilderness
- Miccosukee Reservation
- Seminole Tribe of Florida
- Big Cypress National Preserve
- Florida Panther NWR
- Everglades National Park

NAD83 UTM 17



0 2 4 Miles



GULF OF MEXICO

EVERGLADES NATIONAL PARK

BIG CYPRESS NATIONAL PRESERVE

MICCOSUKEE RESERVATION

Loop Road

Eleven Mile Road

Turner River Road

Miles City

Everglades City

Chokoloskee

Fire Operations Center

Copeland

Jerome

Deep Lake

Lower Wagonwheel

Fire Prairie

Wagonwheel

Deep Lake

Deep Lake

Deep Lake

Deep Lake

Deep Lake

Deep Lake

Deep Lake

Deep Lake

Deep Lake

Deep Lake

Deep Lake

Deep Lake

Deep Lake

Deep Lake

Deep Lake

Deep Lake

Deep Lake

Deep Lake