

# Cowbell Fire

FL-BCP-017033

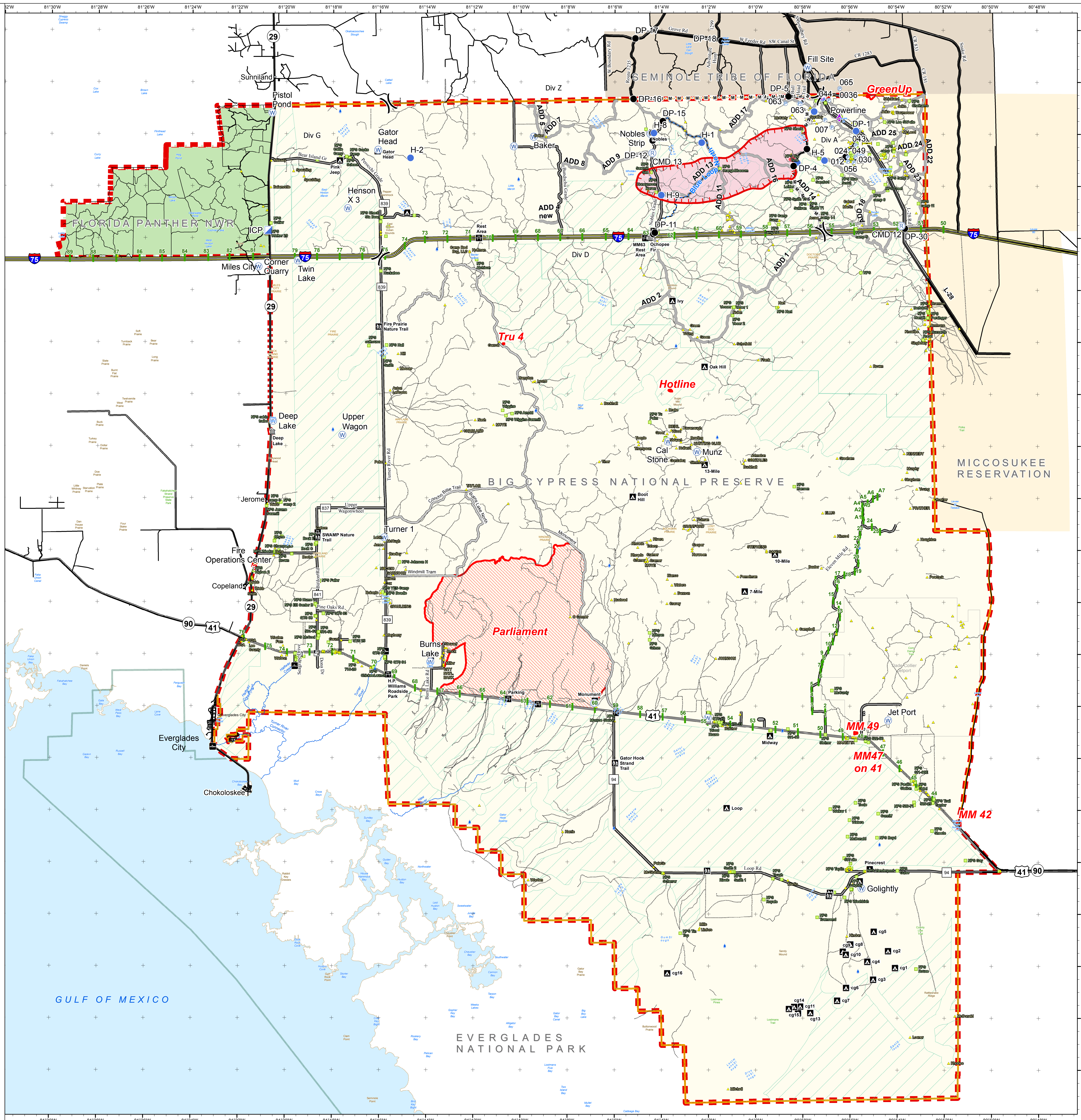
Initial Attack Map  
April 10, 2017  
0800

8,358 acres  
Approximate Perimeter  
as of 4/9/2017 @ 1720 hrs.

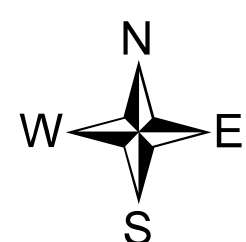


## Legend

- Initial Attack Boundary
- Unknown
- Aerial Hazard
- Drop Point
- Helispot
- Incident Command Post
- Pump
- Repeater
- Water Source
- Uncontrolled Fire Edge
- Completed Line
- Mastication Line
- Fire Polygon
- Other 2017 Wildfires
- Private Structures
- NPS Property
- City
- Campground
- Canoe Access
- Office
- Pump-out Station
- Park/Rest Area
- Trailhead
- Hydro Station
- Bridge Location
- Primary Buggy Trail
- Eligible for Wilderness
- Miccosukee Reservation
- Seminole Tribe of Florida
- Big Cypress National Preserve
- Florida Panther NWR
- Everglades National Park



NAD83 UTM 17



0 2 4 Miles