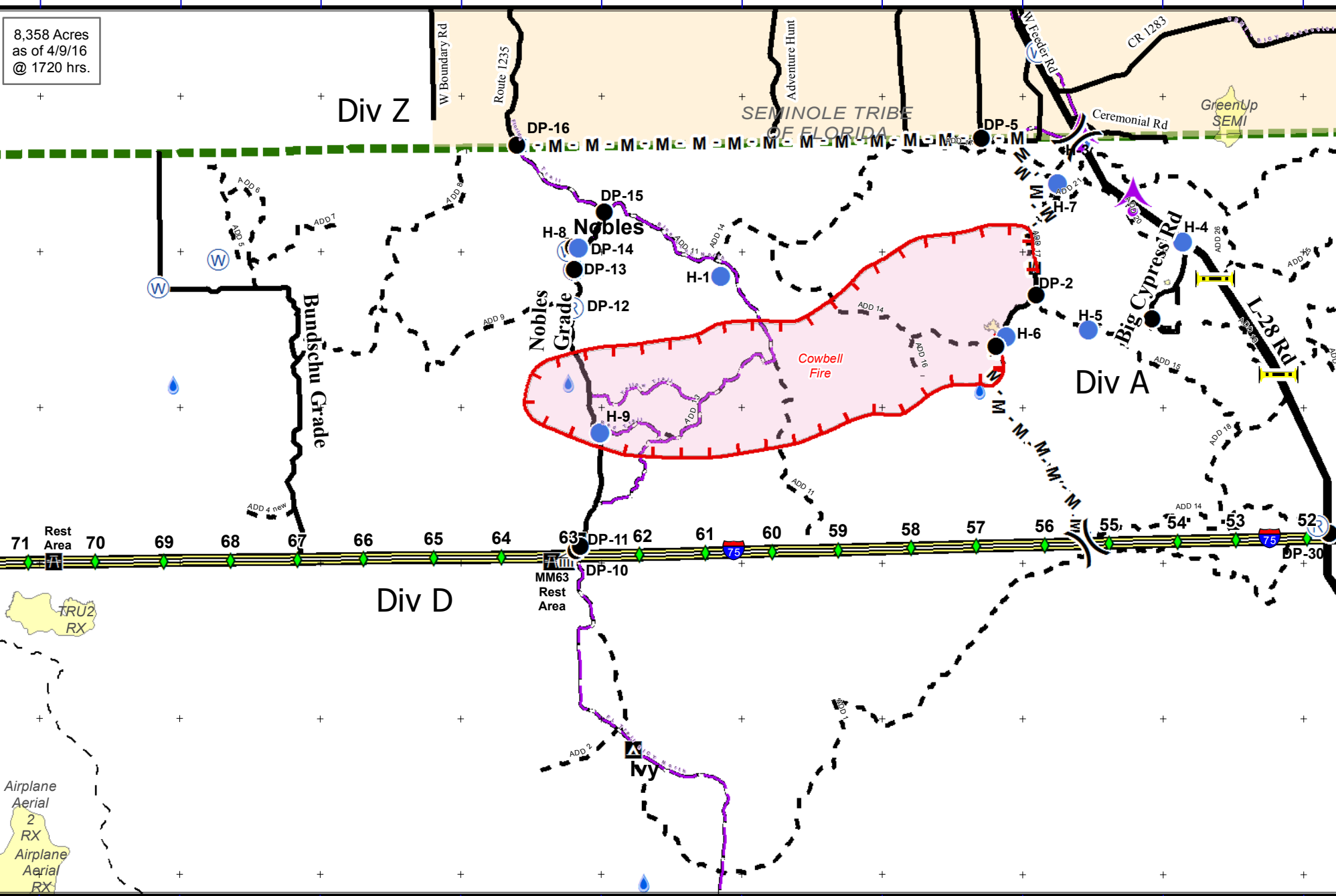


81°12'0"W 81°10'0"W 81°8'0"W 81°6'0"W 81°4'0"W 81°2'0"W 81°0'0"W 80°58'0"W 80°56'0"W 80°54'0"W



8,358 Acres  
as of 4/9/16  
@ 1720 hrs.

71 Rest Area 70 69 68 67 66 65 64 63 DP-11 62 61 60 59 58 57 56 55 54 53 52 DP-30

TRU2 RX

Airplane Aerial 2 RX  
Airplane Aerial RX

**Cowbell Fire**  
FL-BCP-017033  
**IAP Map**  
April 10, 2017  
Day Shift



**Legend**

- ┌ Uncontrolled Fire Edge
- Completed Line
- M - M** Mastication Line
- P Pump
- Drop Point
- Helispot
- ( ) Division
- R Repeater
- ▲ Aerial Hazard
- Private Structures
- NPS NPS Property
- I Bridge Locations
- I-75
- Improved Road
- Primary Buggy Trail



NAD 83 UTM 17

