

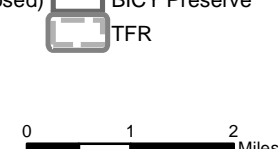
Cowbell Fire
FL-BCP-017033

Index Map
April 10, 2017
0800



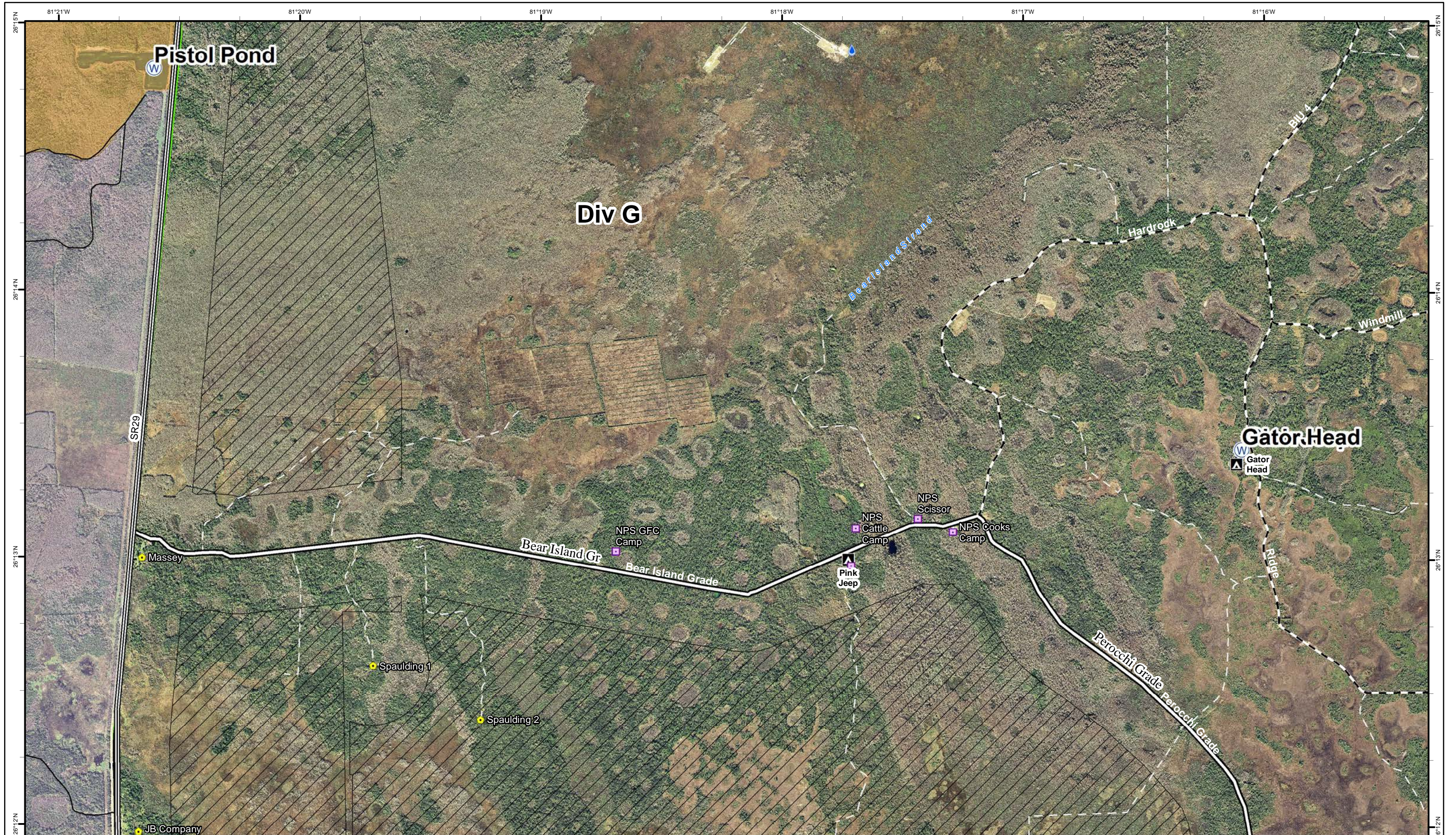
647 acres
 Approximate Perimeter
 as of 4/9/2017 @ 8,358 hrs.

- | | | | | | | | |
|---------------|-----------------|-------------------------|--------------------------|---------------------------|---------------------------|-----------------------------------|------------------------|
| ① Rally Point | ▲ Aerial Hazard | ▣ Incident Command Post | ▬ Uncontrolled Fire Edge | ▨ Historic Fire Perimeter | ⌚ Bridge Location | — Primary Buggy Trail | — seminole_reservation |
|) Division | ● Drop Point | Ⓟ Pump | ▬ Completed Line | 💧 Hydro Station | ▬ Improved Road | - - Non-Designated Trail (closed) | ▭ BICY Preserve |
| | ● Helispot | Ⓡ Repeater | M - Mastication Line | ◆ Mile Marker | ▬ Florida Trail | ▭ TFR | |
| | | Ⓜ Water Source | ▭ Fire Polygon | | ▬ Eligible for Wilderness | | |



NAD83 UTM 17





Cowbell Fire
FL-BCP-017033

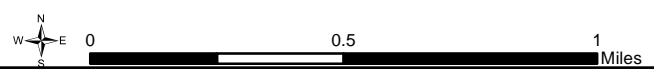
Operations Map
April 10, 2017
0800



8,358 acres
Approximate Perimeter
as of 4/9/2017 @ 1720 hrs.

Legend

- ① Rally Point
- () Division
- W Water Source
- Fire History 2015 & 2016
- Hydro Station
- Bridge Location
- Improved Road
- Non-Designated Trail (closed)
- Florida Trail
- Eligible for Wilderness
- BICY Preserve
- TFR



1	2	3	4	5
6	7	8	9	10



81°17'W

81°16'W

81°15'W

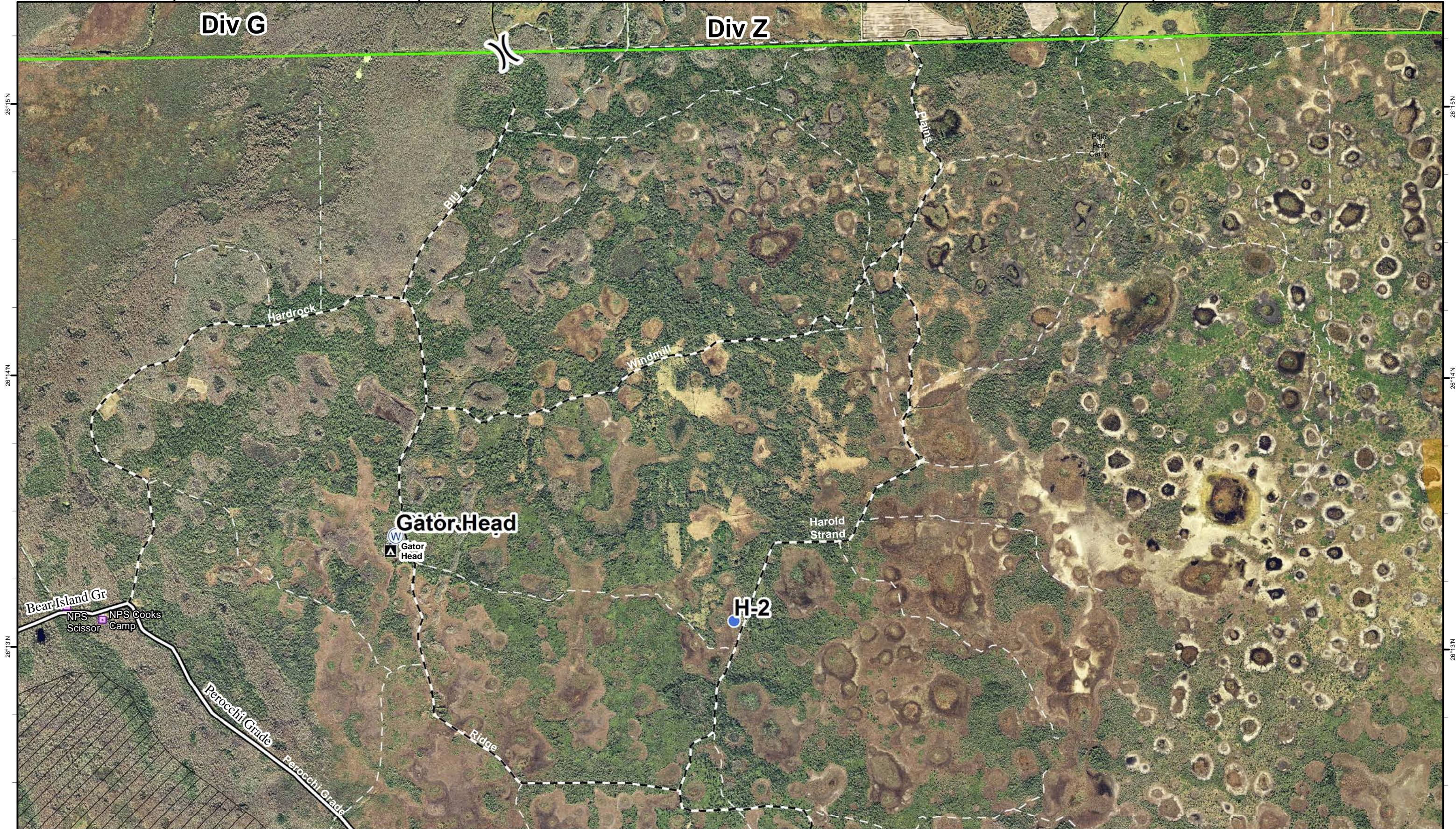
81°14'W

81°13'W

81°12'W

Div G

Div Z



Cowbell Fire
 FL-BCP-017033

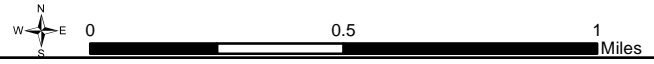
Operations Map
 April 10, 2017
 0800



8,358 acres
 Approximate Perimeter
 as of 4/9/2017 @ 1720 hrs.

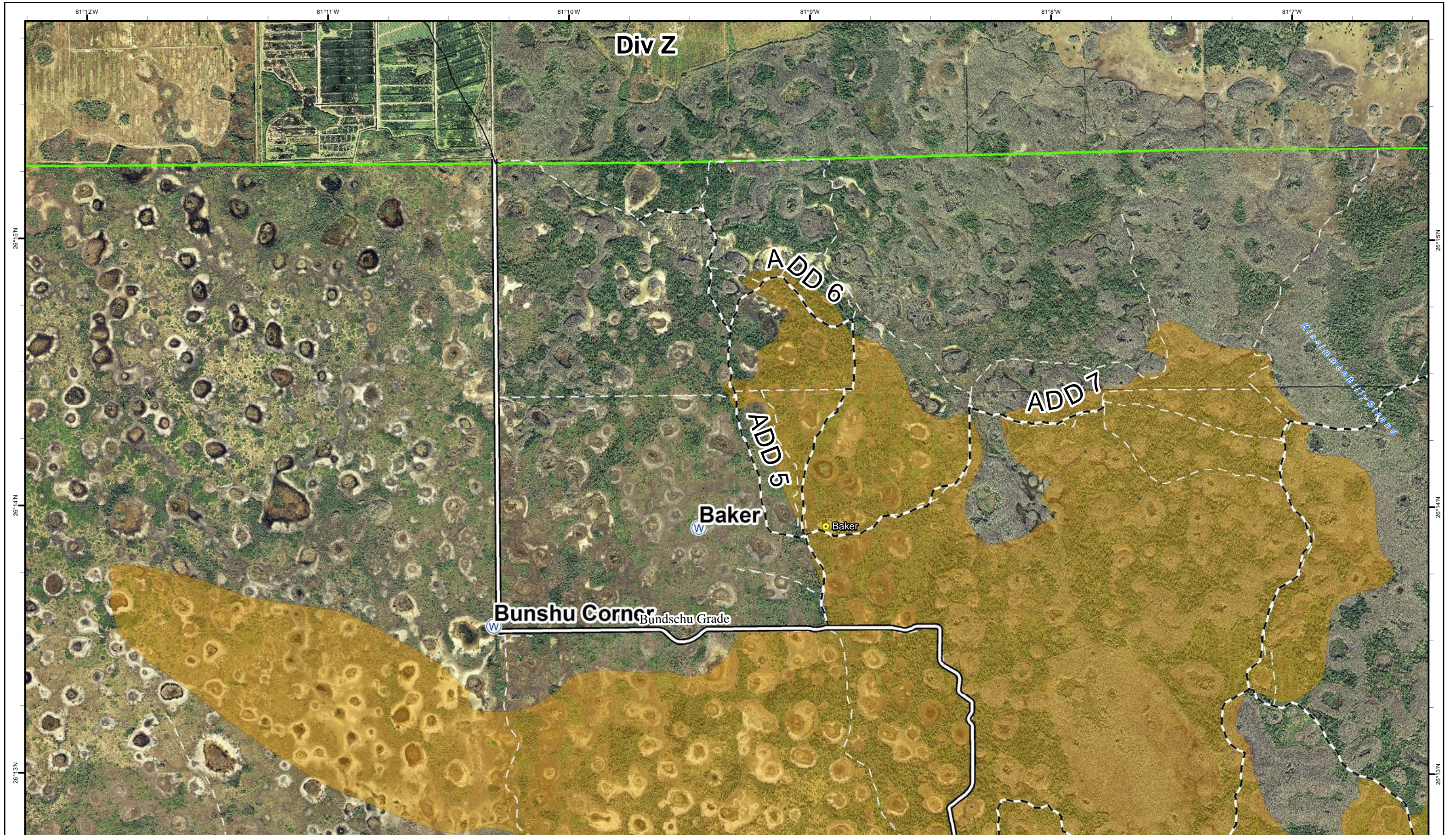
Legend

- ① Rally Point
- Ⓜ Water Source
- 🔥 Fire History 2015 & 2016
- 🌉 Bridge Location
- 🏠 Eligible for Wilderness
- ⌋ Division
- ⚡ Improved Road
- 🚫 Non-Designated Trail (closed)
- 🚚 TFR
- Helispot
- 🛤️ Florida Trail
- 🌿 BICY Preserve



1	2	3	4	5
6	7	8	9	10





Cowbell Fire
FL-BCP-017033

Operations Map
April 10, 2017
0800



8,358 acres
Approximate Perimeter
as of 4/9/2017 @ 1720 hrs.

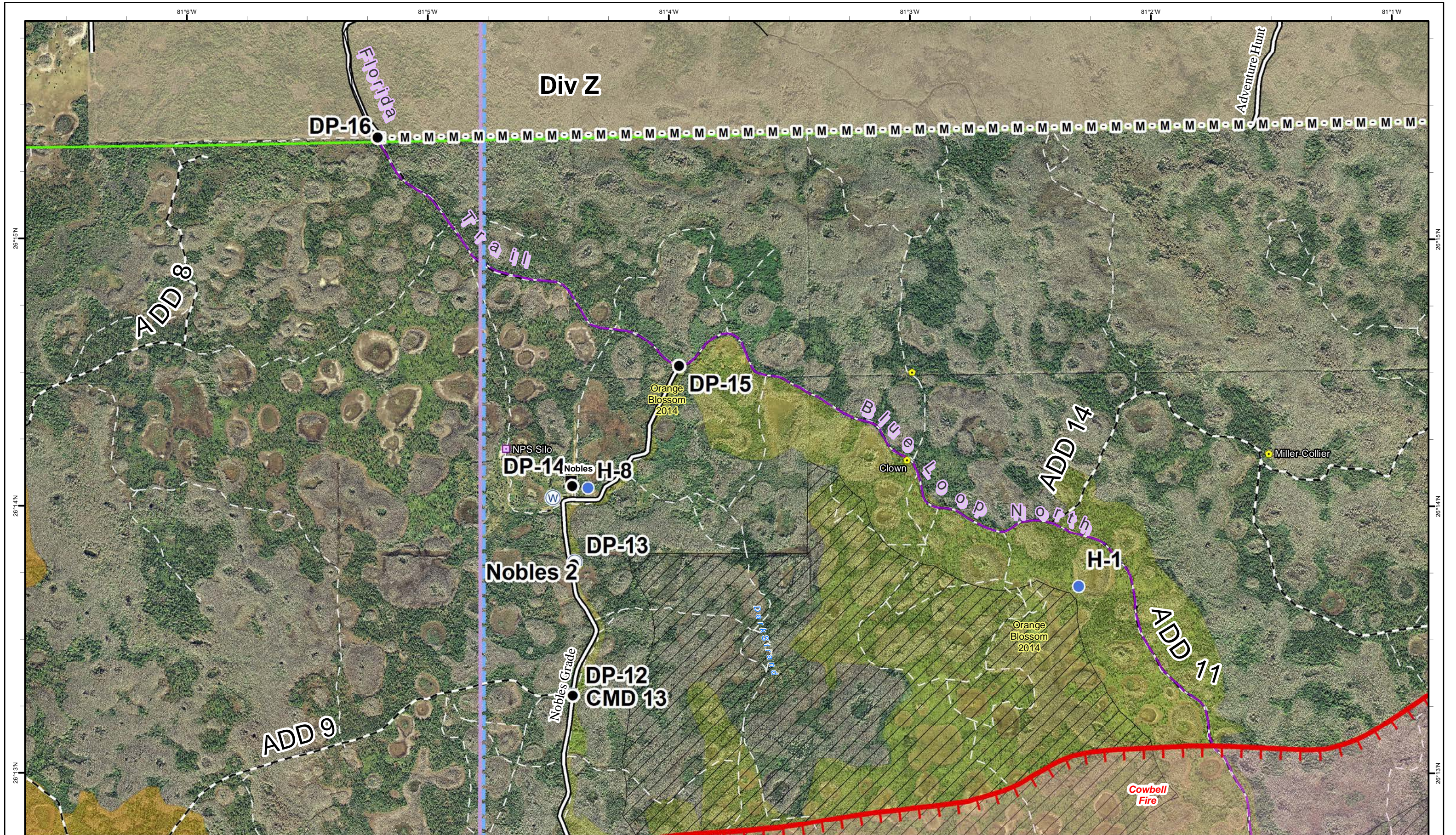
Legend

- ① Rally Point
- ⌋ Division
- Ⓜ Water Source
- Fire History 2015 & 2016
- ⚙ Bridge Location
- ▬ Improved Road
- ▬ Primary Buggy Trail
- ▬ Non-Designated Trail (closed)
- ▬ Florida Trail
- ▬ BICY Preserve
- ▬ TFR



NAD83 UTM 17





Cowbell Fire
FL-BCP-017033

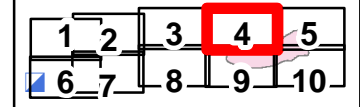
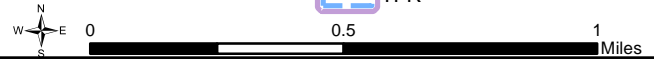
Operations Map
April 10, 2017
0800

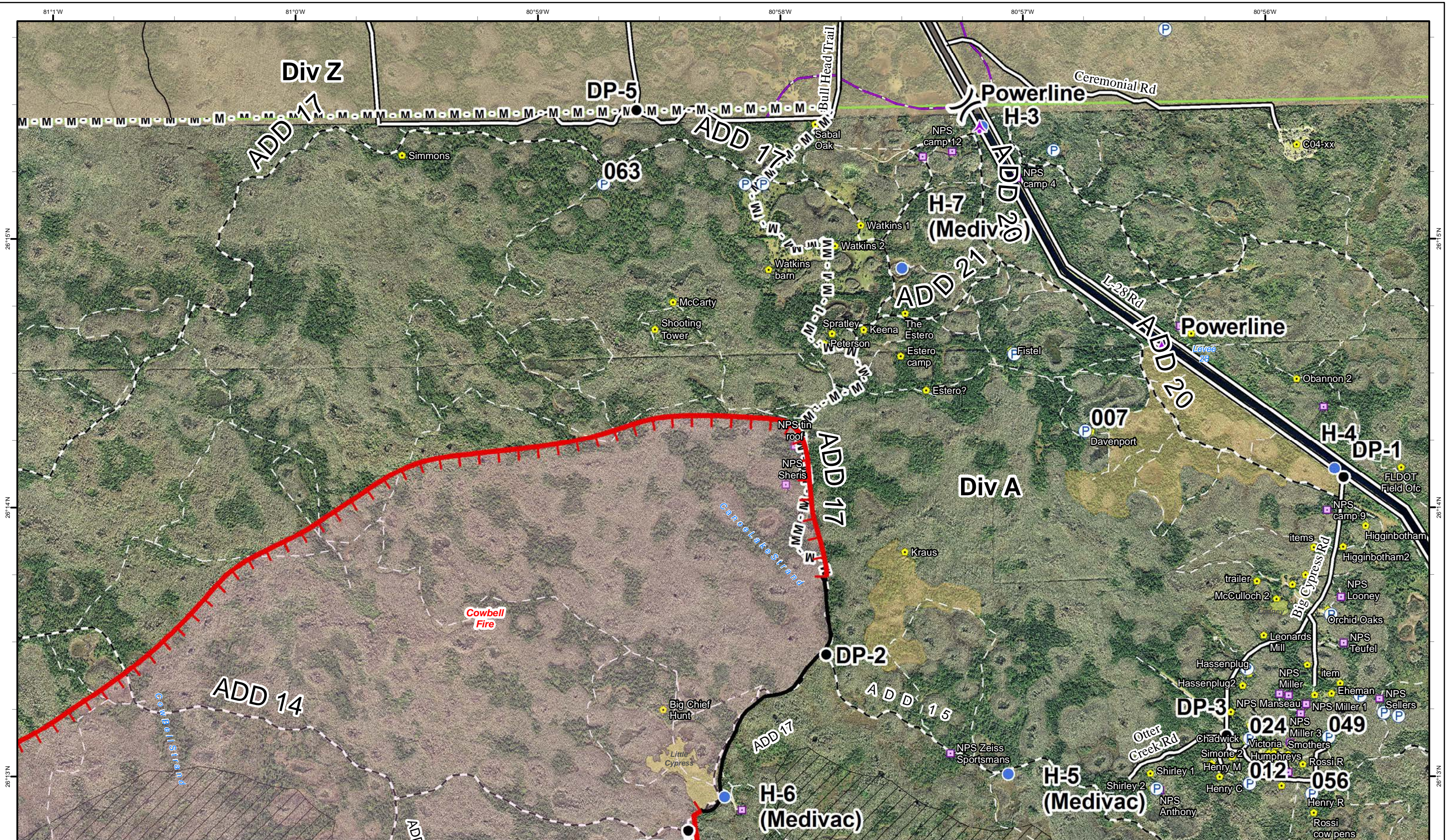


8,358 acres
Approximate Perimeter
as of 4/9/2017 @ 1720 hrs.

Legend


- ① Rally Point
- Helispot
- ⊕ Water Source
- ⊔ Uncontrolled Fire Edge
- ⚡ Bridge Location
- Primary Buggy Trail
- ⊠ Eligible for Wilderness
-) Division
- Ⓡ Repeater
- M - Mastication Line
- == Improved Road
- Non-Designated Trail (closed)
- ⊠ Seminole Tribe of Florida
- Drop Point
- Fire Polygon
- Florida Trail
- ⊠ BICY Preserve
- Fire History 2015 & 2016
- ⊠ TFR





Cowbell Fire
FL-BCP-017033

Operations Map
 April 10, 2017
 0800



8,358 acres
 Approximate Perimeter
 as of 4/9/2017 @ 1720 hrs.

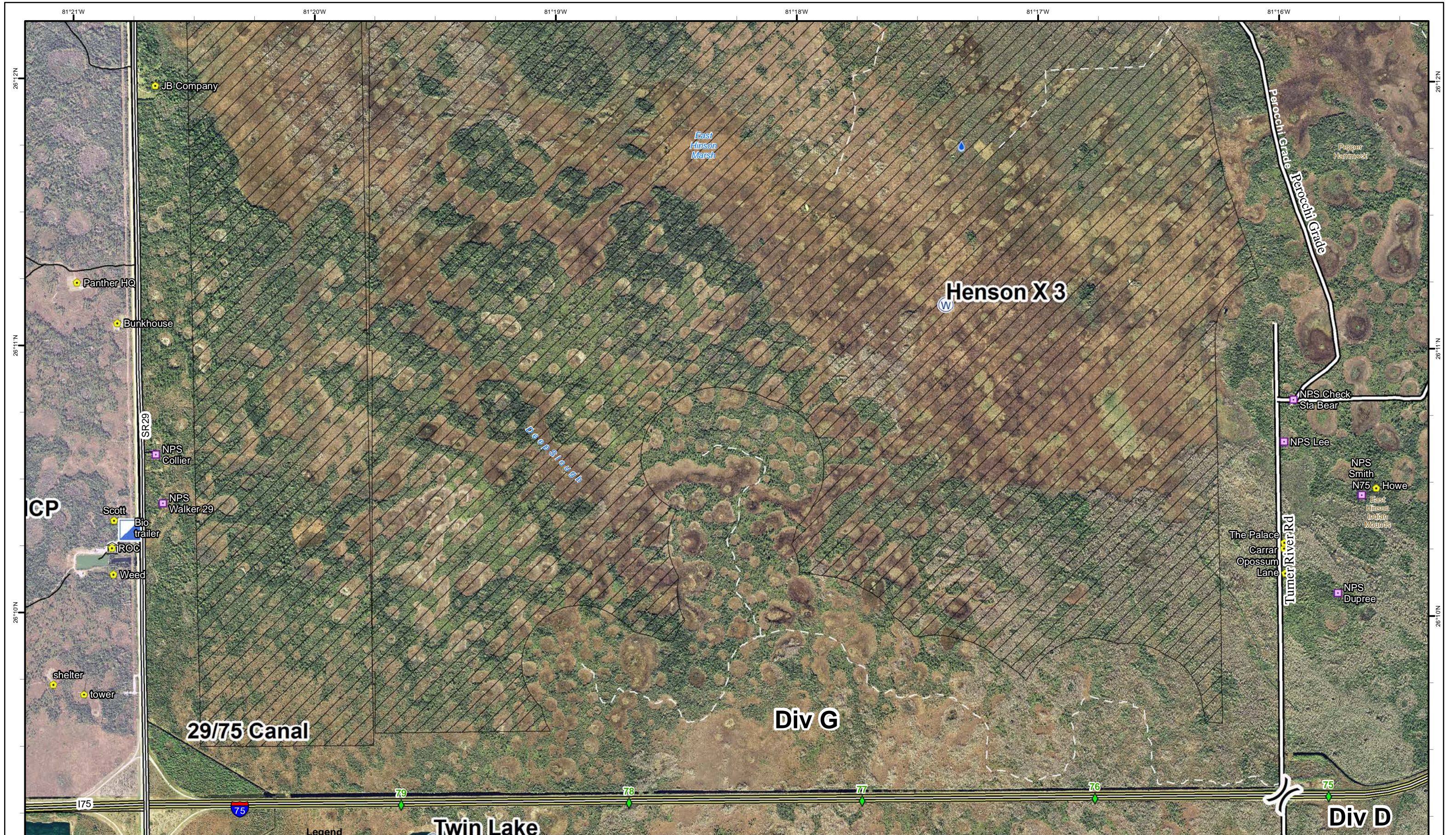
Legend

① Rally Point	● Drop Point	▬ Uncontrolled Fire Edge	▭ Historic Fire Perimeter	⚡ Bridge Location	▬ Primary Buggy Trail	▭ Eligible for Wilderness
⌋ Division	● Helispot	▬ Completed Line	▭ Fire History 2015 & 2016	▬ Improved Road	▬ Non-Designated Trail (closed)	▭ Seminole Tribe of Florida
⊕ Pump	⊕ Aerial Hazard	M - Mastication Line		▬ Florida Trail	▭ BICY Preserve	▭ TFR
		▭ Fire Polygon				

N
 W — E — S
 0 0.5 1 Miles

1	2	3	4	5
6	7	8	9	10





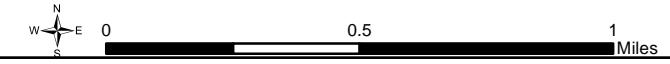
Cowbell Fire
FL-BCP-017033

Operations Map
April 10, 2017
0800



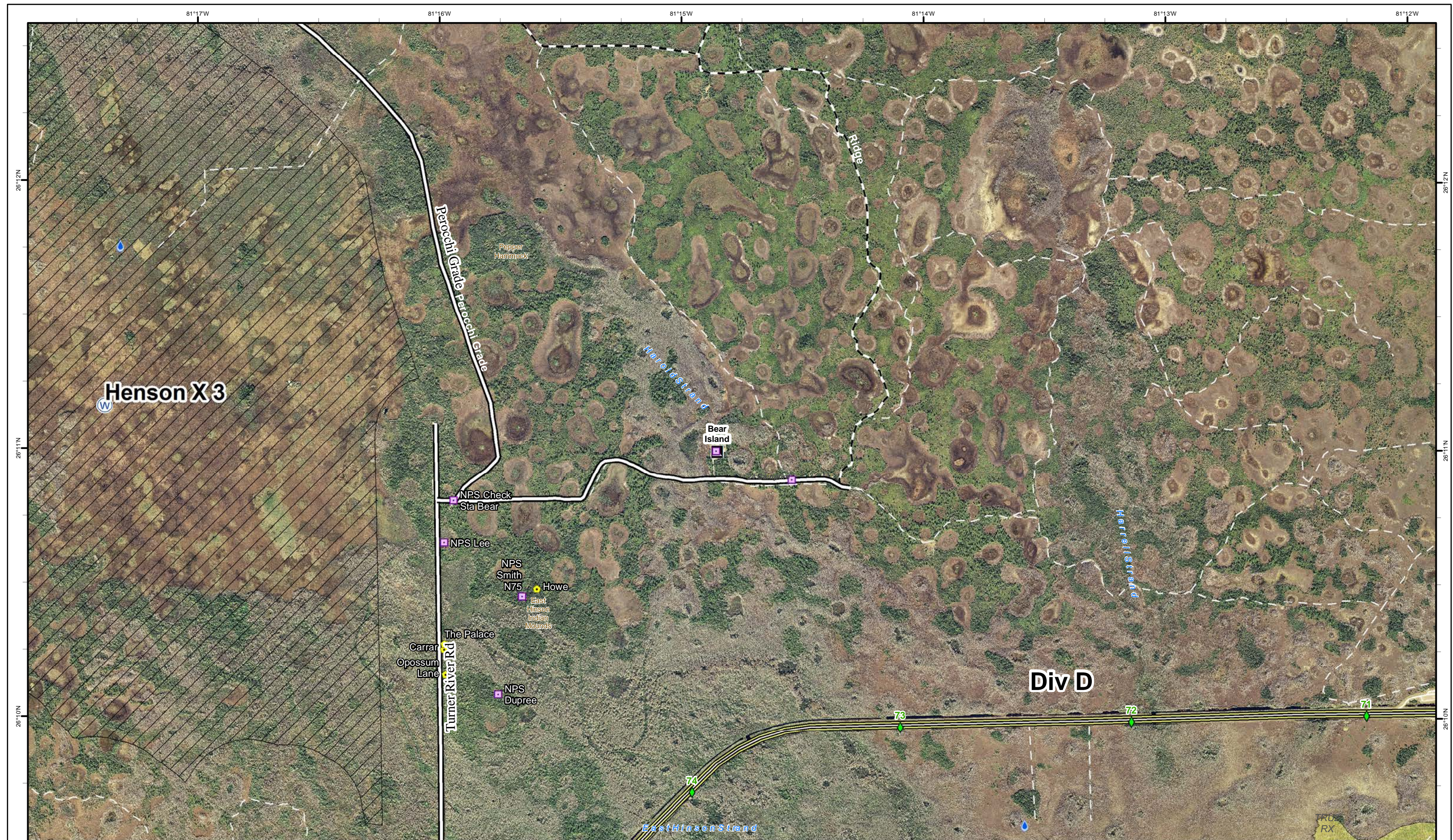
8,358 acres
Approximate Perimeter
as of 4/9/2017 @ 1720 hrs.

- Legend**
- ① Rally Point
 - () Division
 - Incident Command Post
 - (W) Water Source
 - Fire History 2015 & 2016
 - 💧 Hydro Station
 - ◆ Mile Marker
 - 🚧 Bridge Location
 - = Improved Road
 - - - Non-Designated Trail (closed)
 - Florida Trail
 - ▨ Eligible for Wilderness
 - ▭ BICY Preserve
 - 🏠 TFR



1	2	3	4	5
6	7	8	9	10





Cowbell Fire
FL-BCP-017033

Operations Map
April 10, 2017
0800



8,358 acres
Approximate Perimeter
as of 4/9/2017 @ 1720 hrs.

Legend

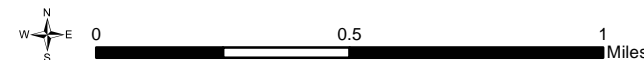
- ① Rally Point
- ⌋ Division
- Ⓜ Water Source

- Historic Fire Perimeter
- Fire History 2015 & 2016

- Hydro Station
- Mile Marker

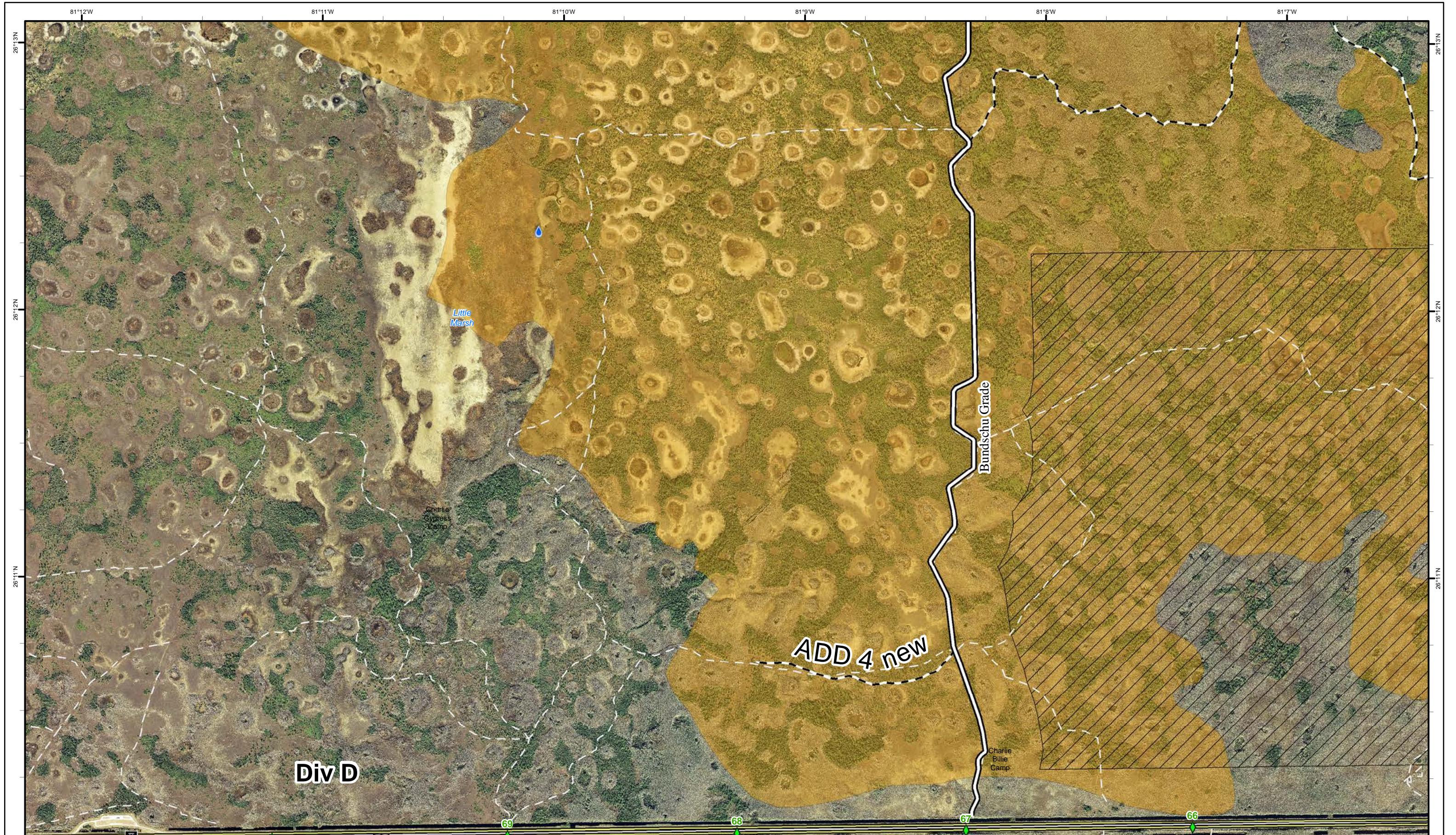
- Bridge Location
- Improved Road
- Non-Designated Trail (closed)
- Florida Trail

- Eligible for Wilderness
- BICY Preserve
- TFR



1	2	3	4	5
6	7	8	9	10





Cowbell Fire
FL-BCP-017033

Operations Map
April 10, 2017
0800



8,358 acres
Approximate Perimeter
as of 4/9/2017 @ 1720 hrs.

Legend

- ① Rally Point
- () Division

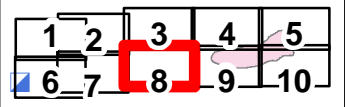
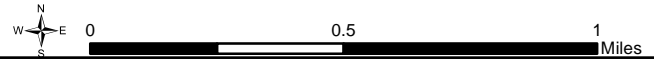
Fire History 2015 & 2016

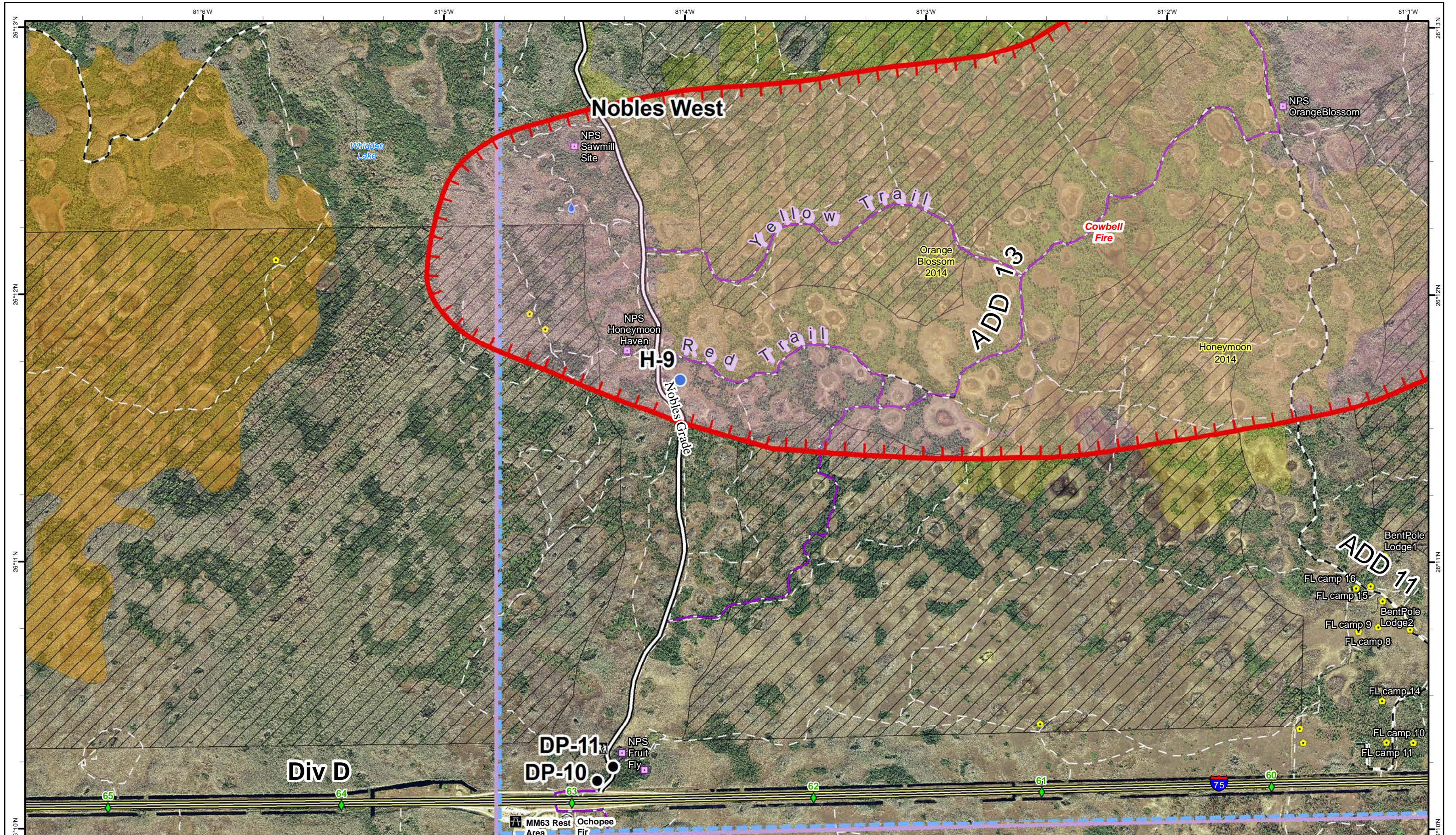
- Hydro Station
- Mile Marker

- Bridge Location
- Improved Road

- Primary Buggy Trail
- Non-Designated Trail (closed)
- Florida Trail

- Eligible for Wilderness
- BICY Preserve
- TFR





Cowbell Fire
FL-BCP-017033

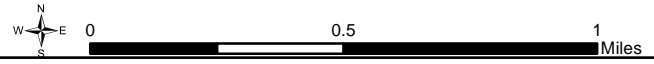
Operations Map
April 10, 2017
0800



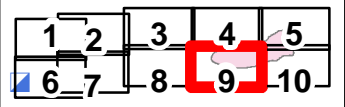
8,358 acres
Approximate Perimeter
as of 4/9/2017 @ 1720 hrs.

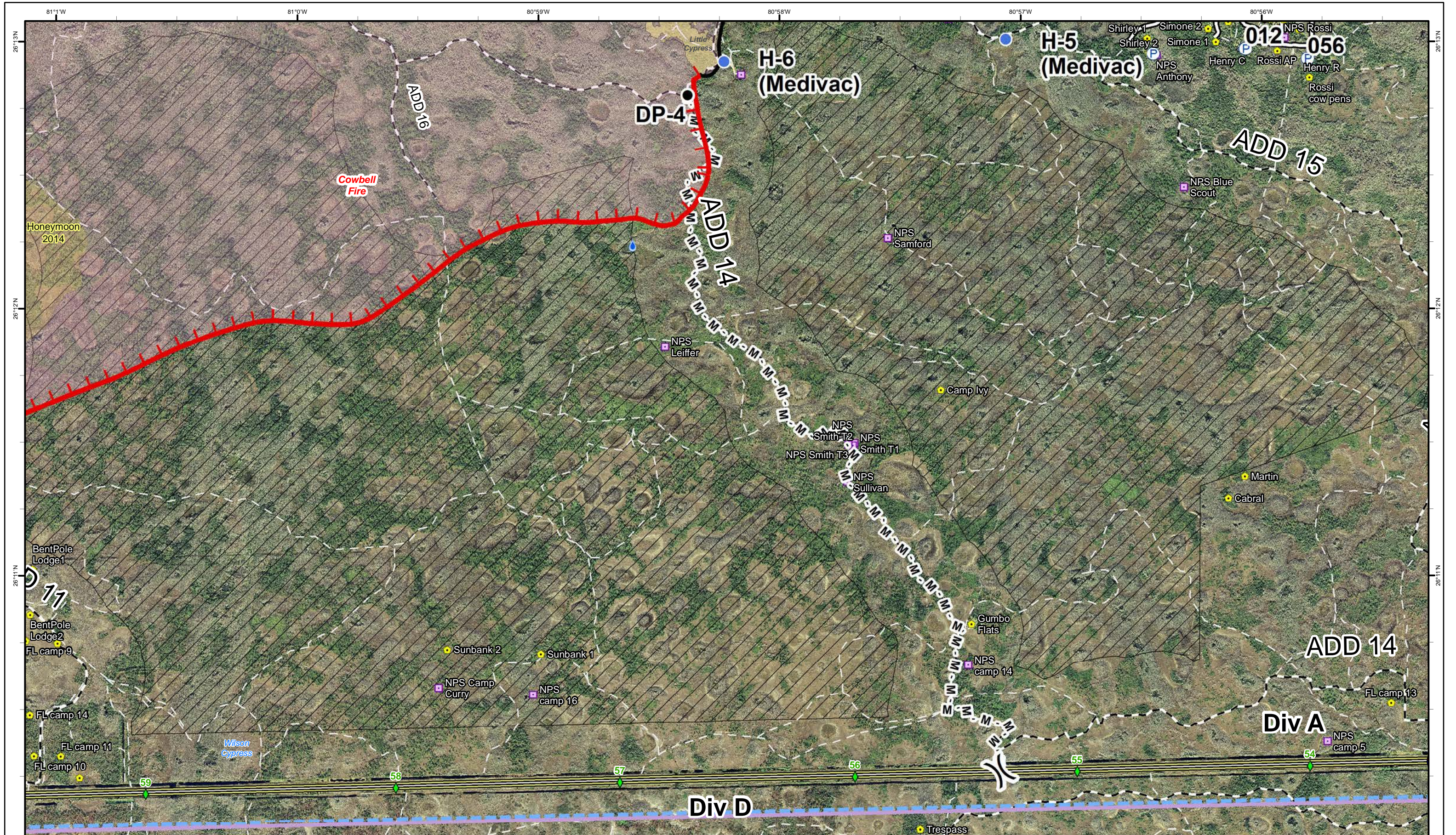
Legend

- ① Rally Point
- Helispot
- ▭ Uncontrolled Fire Edge
- ▭ Fire Polygon
- ▭ Fire History 2015 & 2016
- Drop Point
- Hydro Station
- ◆ Mile Marker
- ▭ Bridge Location
- ▭ Improved Road
- ▭ Primary Buggy Trail
- ▭ Non-Designated Trail (closed)
- ▭ Florida Trail
- ▭ Eligible for Wilderness
- ▭ BICY Preserve
- ▭ TFR



NAD83 UTM 17



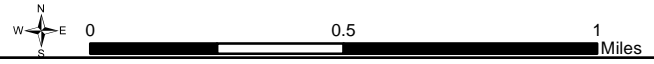


Cowbell Fire
FL-BCP-017033
Operations Map
April 10, 2017
0800



Legend

① Rally Point	● Helispot	▬ Uncontrolled Fire Edge	▭ Historic Fire Perimeter	💧 Hydro Station	⚙ Bridge Location	▬ Primary Buggy Trail	▭ Eligible for W
⌋ Division	Ⓟ Pump	▬ Completed Line	▭ Fire History 2015 & 2016	◆ Mile Marker	▬ Improved Road	▬ Non-Designated Trail (closed)	▭ BICY Present
● Drop Point		M - Mastication Line	▭ Fire Polygon			▬ Florida Trail	▭ TFR



1	2	3	4	5
6	7	8	9	10

