

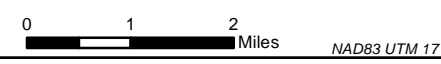
Cowbell Fire
FL-BCP-017033

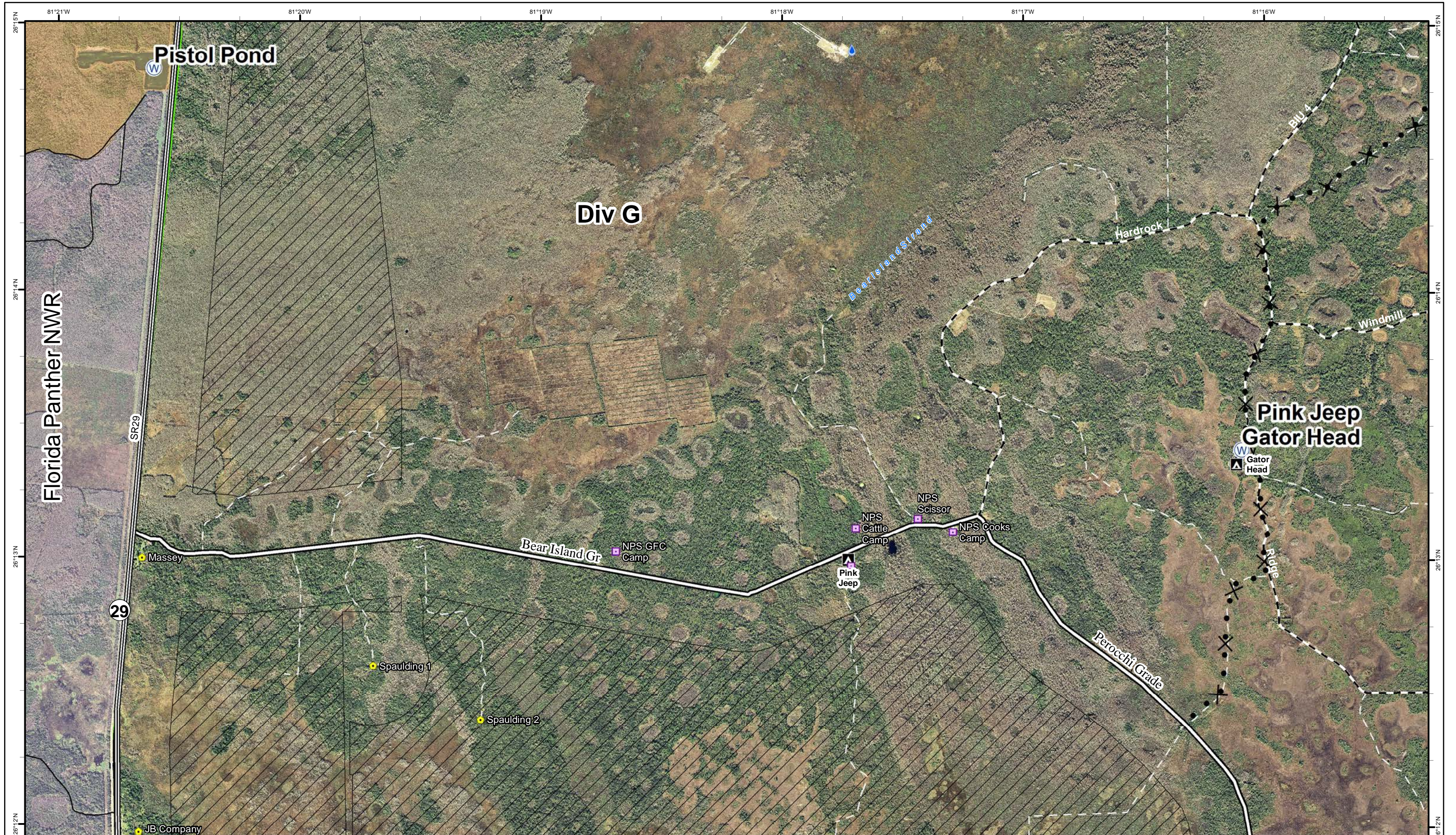
Index Map
April 11, 2017
0800



10,435 acres
 Approximate Perimeter
 as of 4/10/2017 @ 1730 hrs.

Legend									
① Rally Point	▲ Aerial Hazard	▣ Incident Command Post	Ⓟ Pump	▬ Uncontrolled Fire Edge	✂ Proposed Dozer Line	▭ Fire Polygon	⚖ Bridge Location	— Primary Buggy Trail	— seminoles_reservation
) Division	● Drop Point	Ⓜ Repeater	Ⓡ Repeater	⊗ Completed Dozer Line	M - Mastication Line	▭ Historic Fire Perimeter	▬ Improved Road	- - Non-Designated Trail (closed)	▭ BICY Preserve
● Helispot	WX Mobile Weather Unit	Ⓜ Water Source	Ⓜ Water Source	▬ Completed Line	● Hydro Station	● Hydro Station	▬ Florida Trail	▭ Eligible for Wilderness	▭ TFR
					◆ Mile Marker	◆ Mile Marker			





Cowbell Fire
FL-BCP-017033

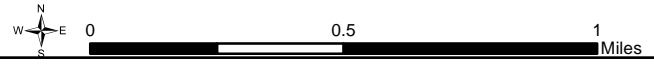
Operations Map
April 11, 2017
0800



10,435 acres
Approximate Perimeter
as of 4/10/2017 @ 1730 hrs.

Legend

- ① Rally Point
- ⊗ Proposed Dozer Line
- 💧 Hydro Station
- 🚧 Bridge Location
- ⊘ Eligible for Wilderness
- ⌋ Division
- 🔥 Fire History 2015 & 2016
- 🛣 Improved Road
- ⚡ BICY Preserve
- Ⓜ Non-Designated Trail (closed)
- 🚚 TFR
- 🚶 Florida Trail
- 🌊 Water Source

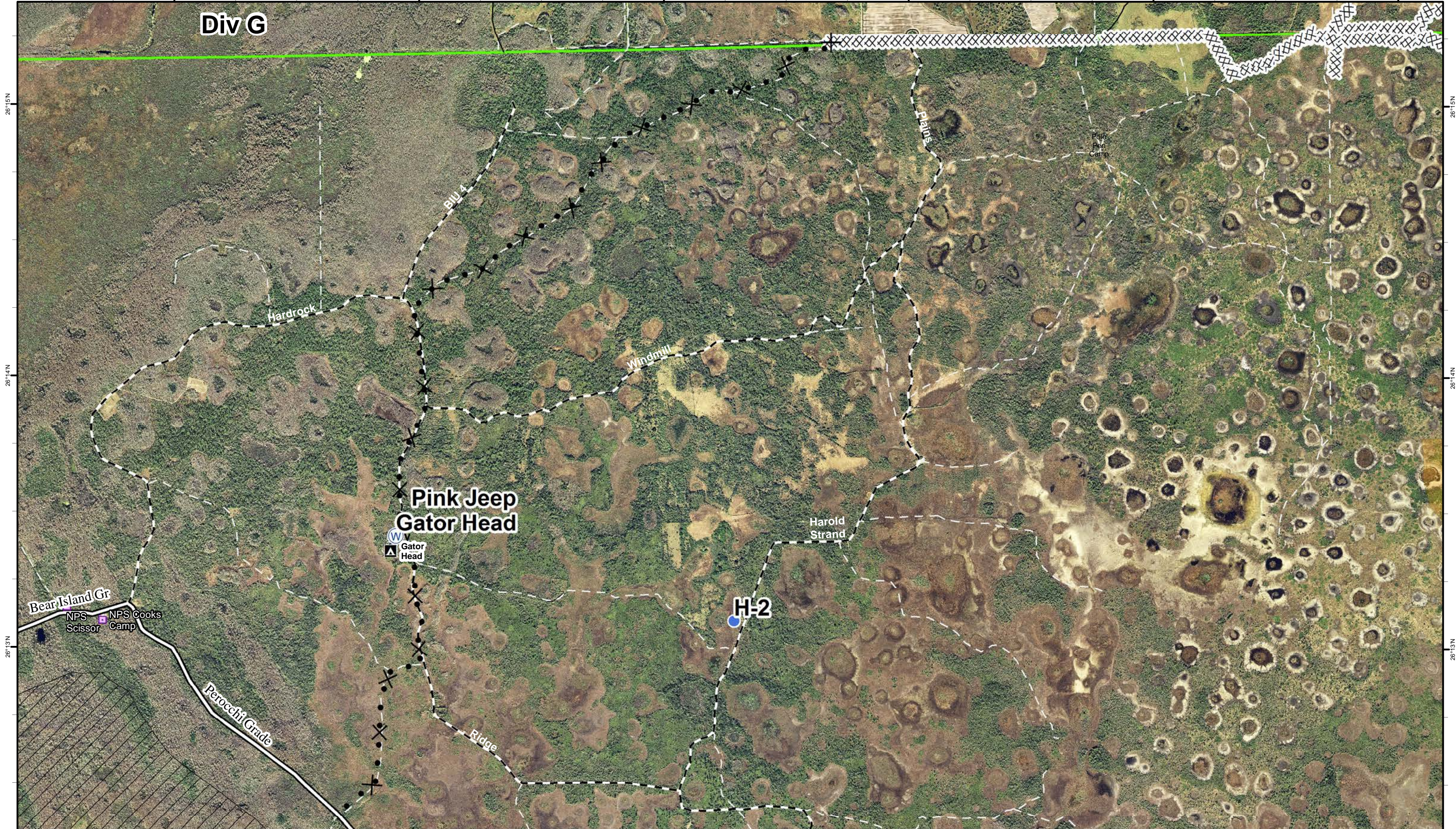


1	2	3	4	5
6	7	8	9	10



81°17W 81°16W 81°15W 81°14W 81°13W 81°12W

Div G



Cowbell Fire
 FL-BCP-017033

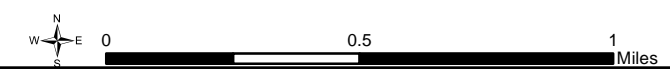
Operations Map
 April 11, 2017
 0800



10,435 acres
 Approximate Perimeter
 as of 4/10/2017 @ 1730 hrs.

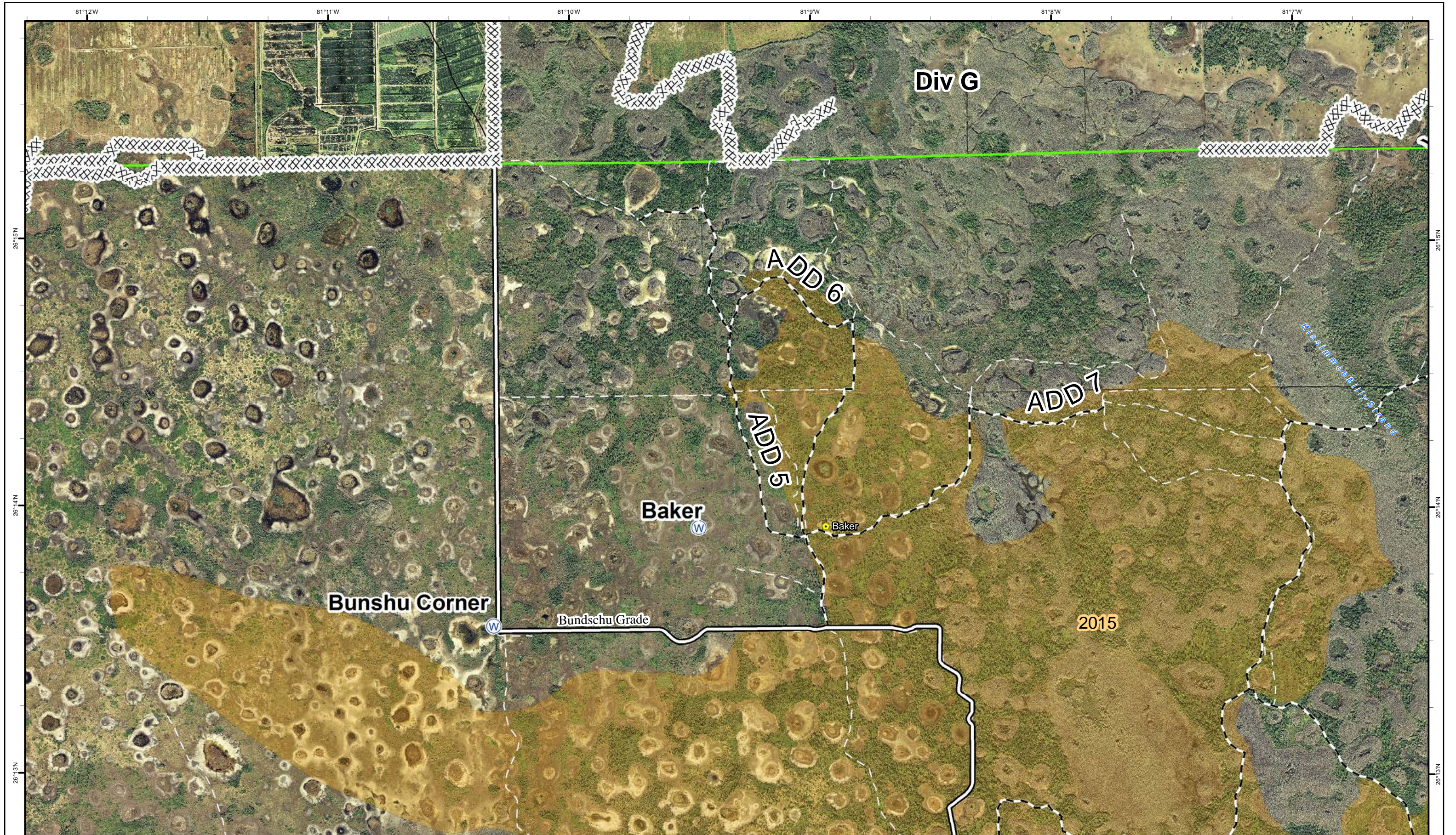
Legend

- ① Rally Point
- ⊕ Water Source
- ⊗ Completed Dozer Line
- ⚡ Bridge Location
- ⊠ Eligible for Wilderness
- ⌋ Division
- ⊗ Proposed Dozer Line
- ⚡ Improved Road
- ⊠ BICY Preserve
- Helispot
- ⊗ Fire History 2015 & 2016
- ⚡ Non-Designated Trail (closed)
- ⊠ TFR
- ⚡ Florida Trail



1	2	3	4	5
6	7	8	9	10





Cowbell Fire
FL-BCP-017033

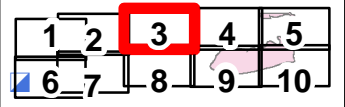
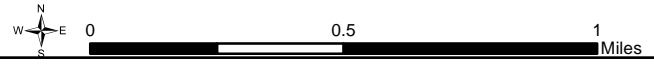
Operations Map
April 11, 2017
0800

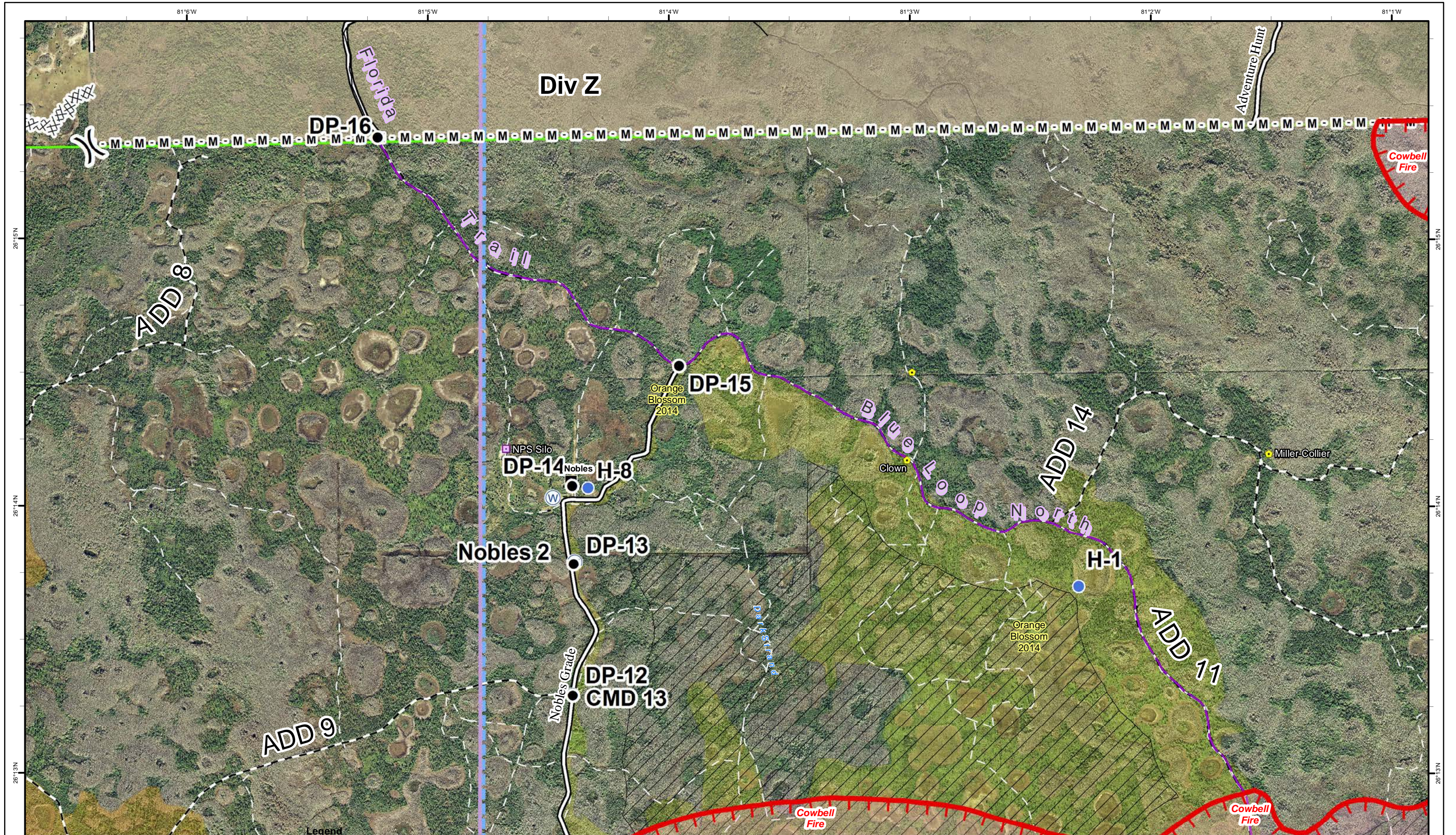


10,435 acres
Approximate Perimeter
as of 4/10/2017 @ 1730 hrs.

Legend

- ① Rally Point
- ⌋ Division
- Ⓜ Water Source
- XXXX Completed Dozer Line
- Fire History 2015 & 2016
- Bridge Location
- Improved Road
- Primary Buggy Trail
- Non-Designated Trail (closed)
- Florida Trail
- BICY Preserve
- TFR





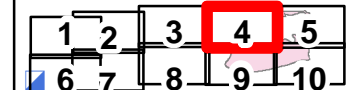
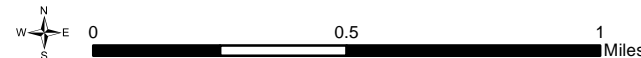
Cowbell Fire
FL-BCP-017033

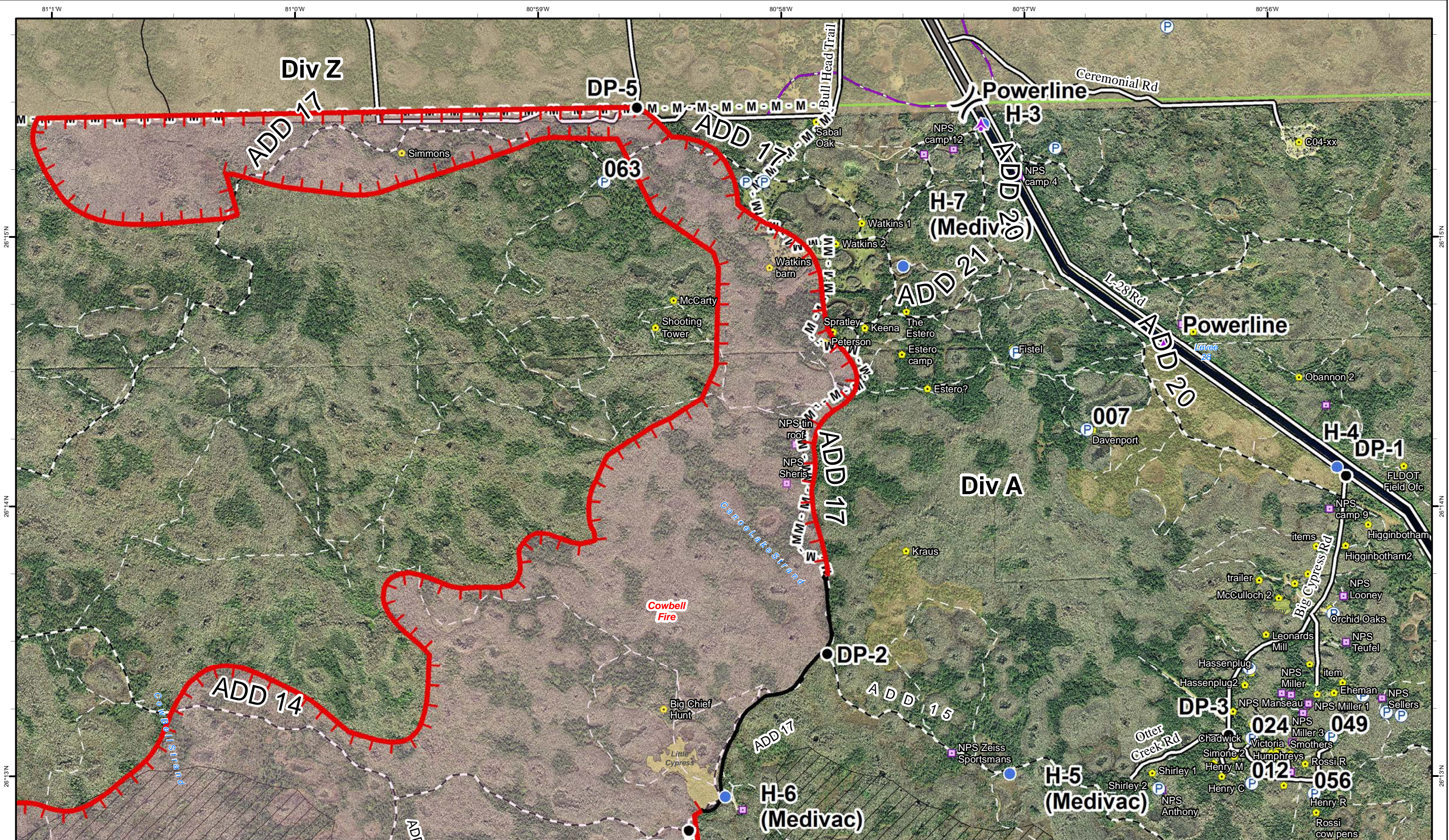
Operations Map
April 11, 2017
0800



10,435 acres
Approximate Perimeter
as of 4/10/2017 @ 1730 hrs.

- | | | | | | | |
|---------------|------------|----------------------------|--------------------------|---------------------------------|-----------------------|-----------------------------|
| ① Rally Point | ● Helispot | Ⓜ Water Source | — Uncontrolled Fire Edge | — Bridge Location | — Primary Buggy Trail | ▨ Eligible for Wilderness |
|) Division | Ⓡ Repeater | Ⓜ Completed Dozer Line | — Improved Road | — Non-Designated Trail (closed) | — Florida Trail | ▨ Seminole Tribe of Florida |
| ● Drop Point | | M - Mastication Line | | | | ▨ BICY Preserve |
| | | ▨ Fire Polygon | | | | ▨ TFR |
| | | ▨ Fire History 2015 & 2016 | | | | |





Cowbell Fire
 FL-BCP-017033

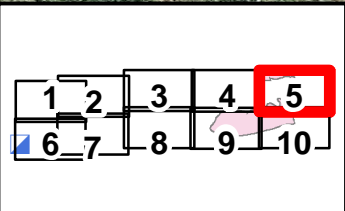
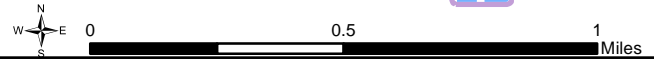
Operations Map
 April 11, 2017
 0800

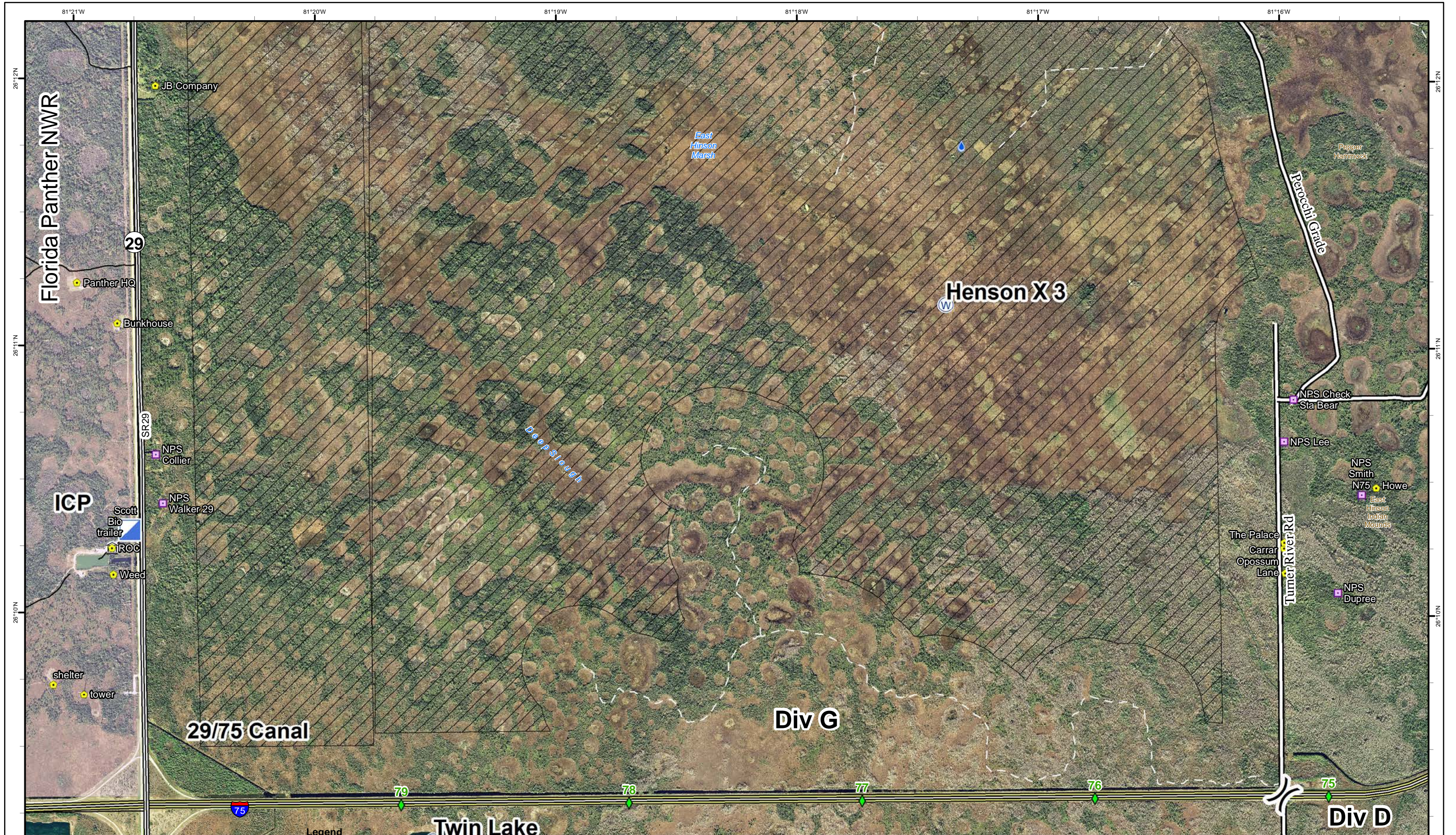


10,435 acres
 Approximate Perimeter
 as of 4/10/2017 @ 1730 hrs.

Legend

- ① Rally Point
- Drop Point
- ⌋ Uncontrolled Fire Edge
- Historic Fire Perimeter
- ⚡ Bridge Location
- Primary Buggy Trail
- ⊘ Eligible for Wilderness
- ⌋ Division
- Helispot
- Completed Line
- Fire History 2015 & 2016
- ⚡ Improved Road
- ⊘ Seminole Tribe of Florida
- Ⓟ Pump
- ⌋ Mastication Line
- Fire Polygon
- Florida Trail
- ⊘ BICY Preserve
- Ⓟ TFR
- ⚡ Aerial Hazard





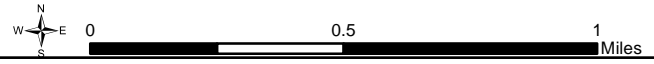
Cowbell Fire
FL-BCP-017033

Operations Map
April 11, 2017
0800



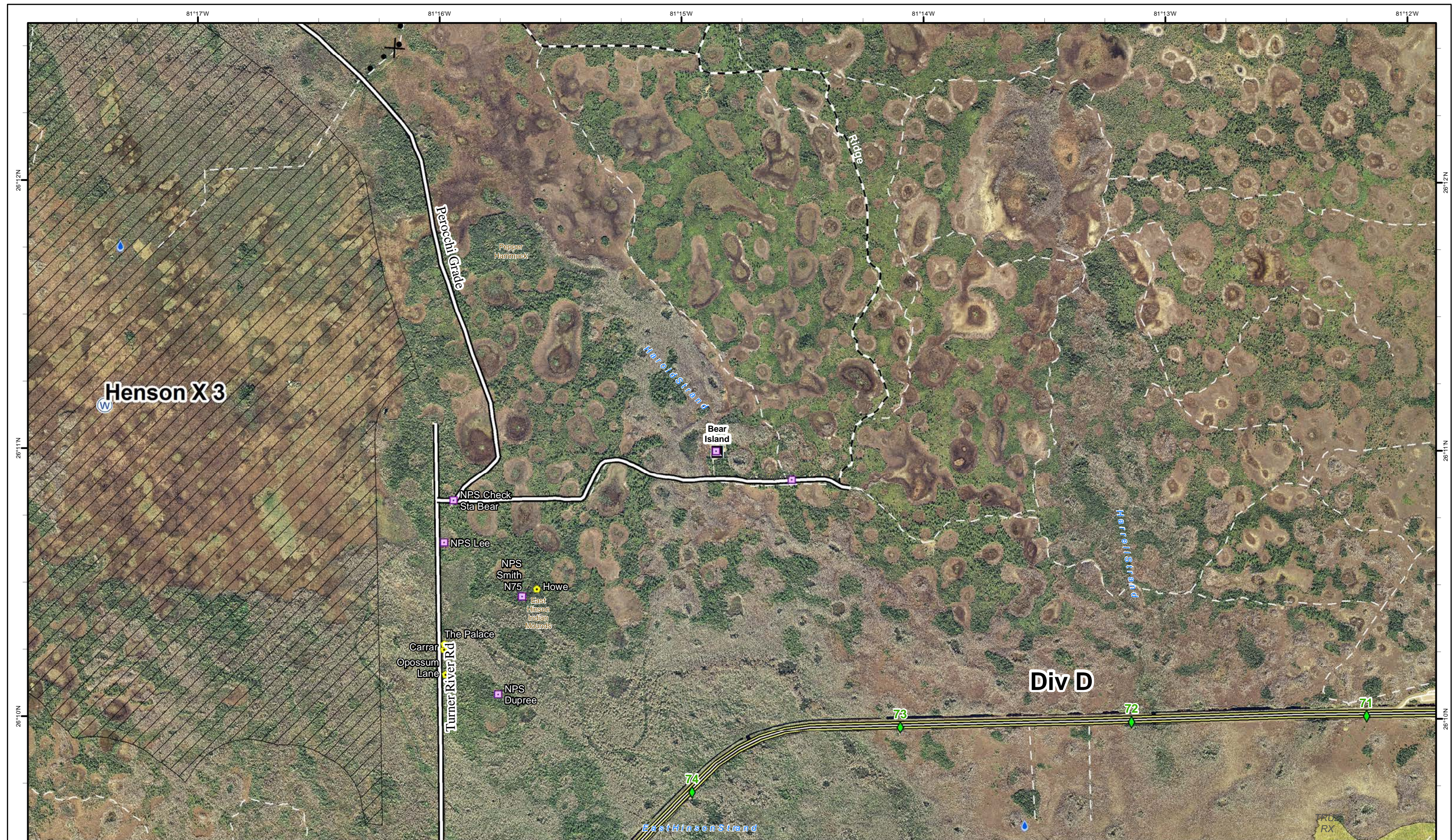
10,435 acres
Approximate Perimeter
as of 4/10/2017 @ 1730 hrs.

- ① Rally Point
- () Division
- ▢ Incident Command Post
- Ⓜ Water Source
- 🔥 Fire History 2015 & 2016
- 💧 Hydro Station
- 📍 Mile Marker
- 🚰 Bridge Location
- 🛣 Improved Road
- ⋯ Non-Designated Trail (closed)
- 🚶 Florida Trail
- 🌲 Eligible for Wilderness
- 🏠 BICY Preserve
- 🏠 TFR



1	2	3	4	5
6	7	8	9	10





Cowbell Fire
FL-BCP-017033

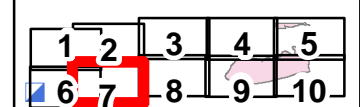
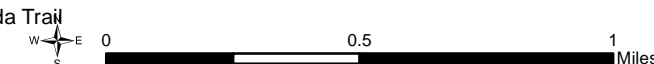
Operations Map
April 11, 2017
0800



10,435 acres
Approximate Perimeter
as of 4/10/2017 @ 1730 hrs.

Legend

- ① Rally Point
- ⌘ Proposed Dozer Line
- Historic Fire Perimeter
- Fire History 2015 & 2016
- Hydro Station
- Mile Marker
- Bridge Location
- Improved Road
- Non-Designated Trail (closed)
- Florida Trail
- Eligible for Wilderness
- BICY Preserve
- TFR





Cowbell Fire
FL-BCP-017033

Operations Map
April 11, 2017
0800



10,435 acres
Approximate Perimeter
as of 4/10/2017 @ 1730 hrs.

Legend

- ① Rally Point
-) Division

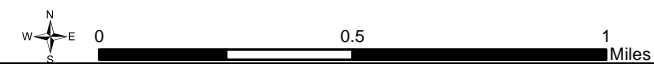
Fire History 2015 & 2016

- Hydro Station
- Mile Marker

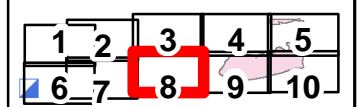
- Bridge Location
- Improved Road

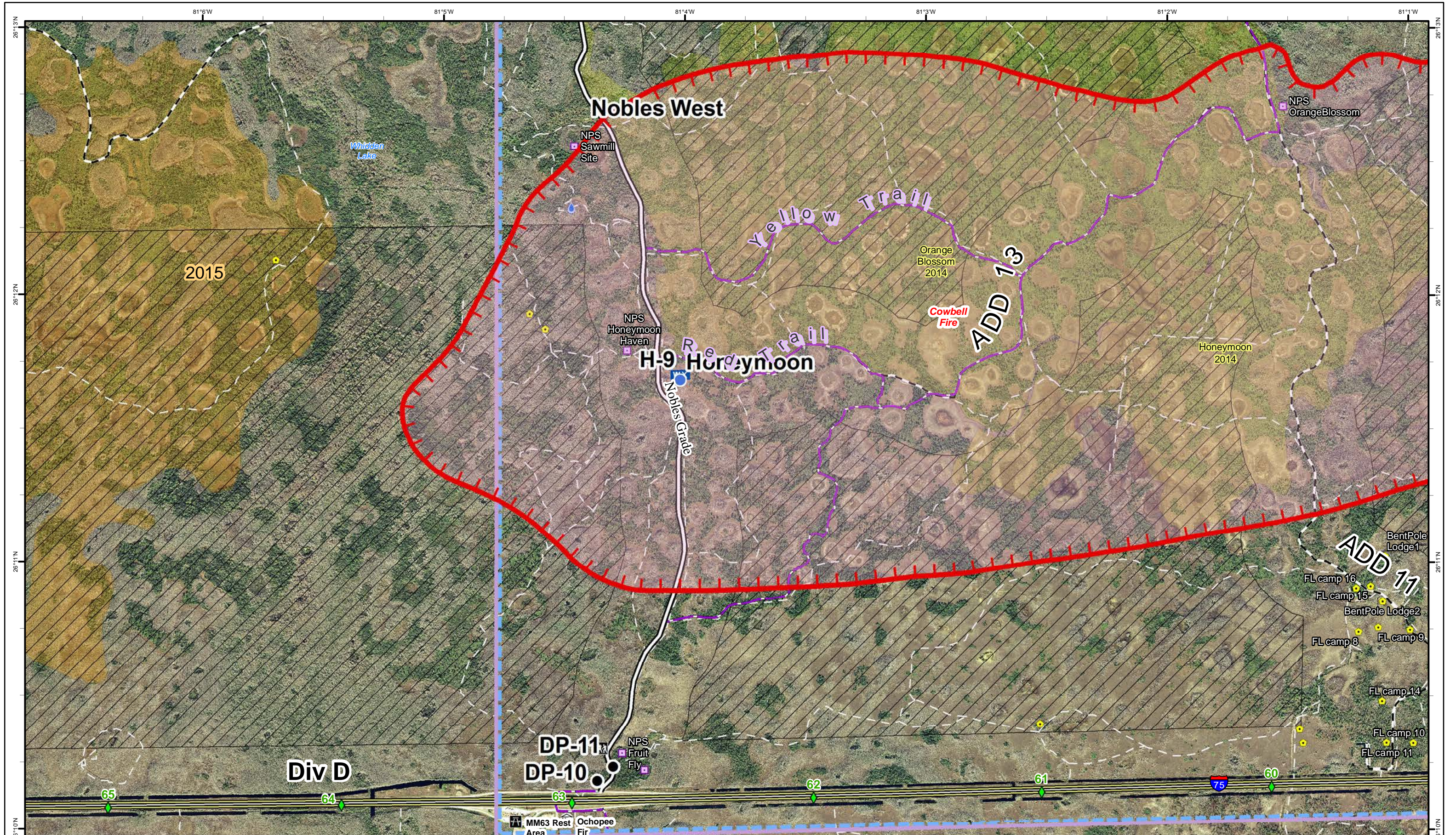
- Primary Buggy Trail
- Non-Designated Trail (closed)
- Florida Trail

- Eligible for Wilderness
- BICY Preserve
- TFR



NAD83 UTM 17





Cowbell Fire
FL-BCP-017033

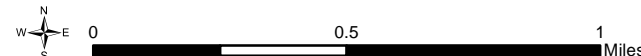
Operations Map
April 11, 2017
0800



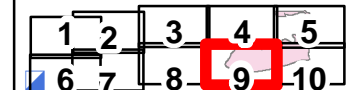
10,435 acres
Approximate Perimeter
as of 4/10/2017 @ 1730 hrs.

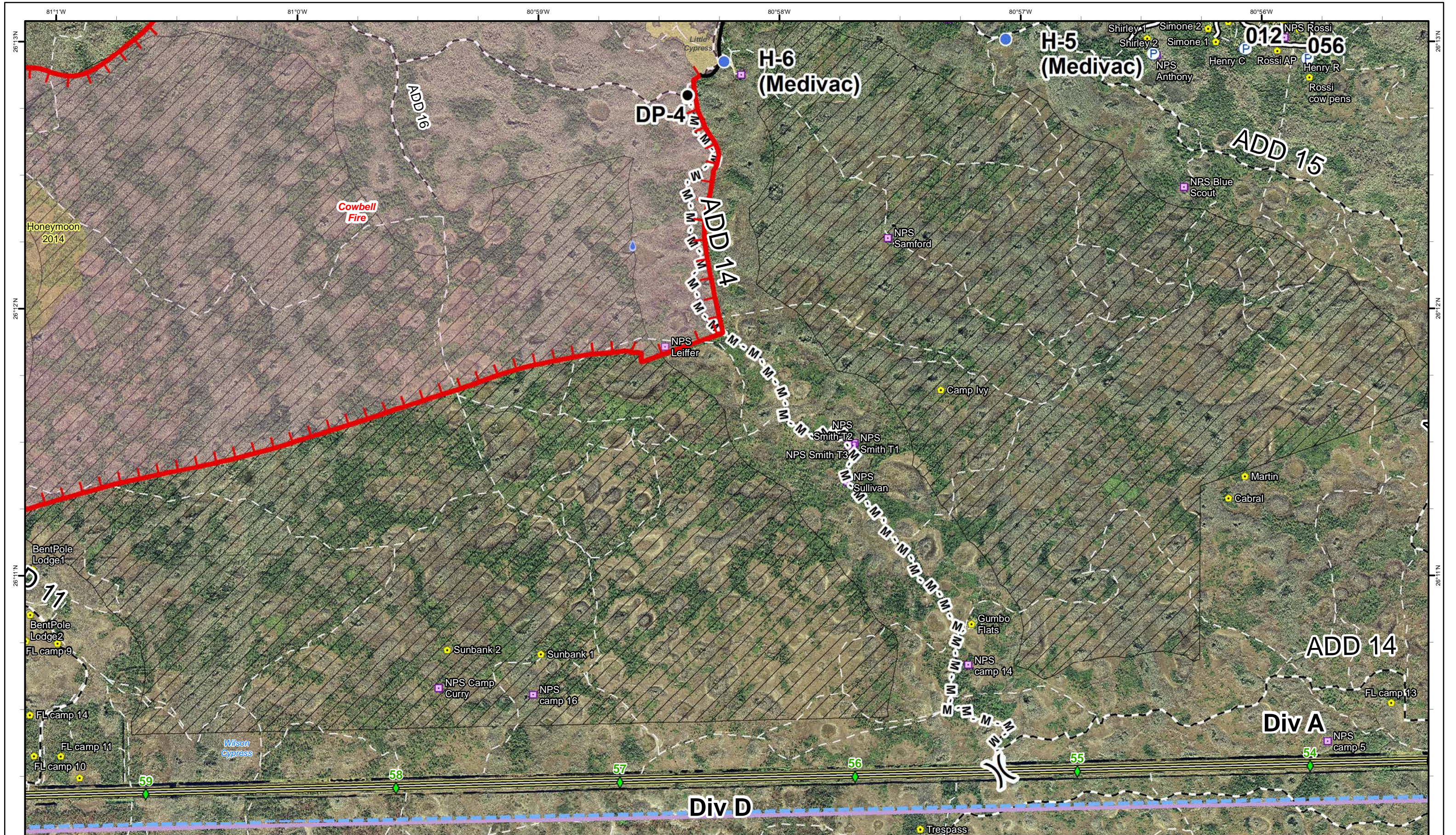
Legend

- ① Rally Point
- Ⓜ Division
- Drop Point
- Helispot
- WX Mobile Weather Unit
- Uncontrolled Fire Edge
- Fire Polygon
- Fire History 2015 & 2016
- Hydro Station
- Mile Marker
- Bridge Location
- Improved Road
- Primary Buggy Trail
- Non-Designated Trail (closed)
- Florida Trail
- Eligible for Wilderness
- BICY Preserve
- TFR



NAD83 UTM 17





Cowbell Fire
FL-BCP-017033

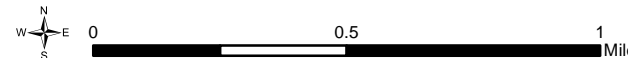
Operations Map
April 11, 2017
0800



10,435 acres
Approximate Perimeter
as of 4/10/2017 @ 1730 hrs.

Legend

- ① Rally Point
- Ⓟ Division
- Drop Point
- Helispot
- Ⓟ Pump
- Uncontrolled Fire Edge
- Completed Line
- M - Mastication Line
- Fire Polygon
- Historic Fire Perimeter
- Fire History 2015 & 2016
- 💧 Hydro Station
- ◆ Mile Marker
- 🌉 Bridge Location
- == Improved Road
- - Primary Buggy Trail
- - Non-Designated Trail (closed)
- Florida Trail
- ▨ Eligible for W
- ▨ BICY Present
- ▨ TFR



NAD83 UTM 17

