

Cowbell Fire
FL-BCP-017033



Index Map
April 12, 2017
0800

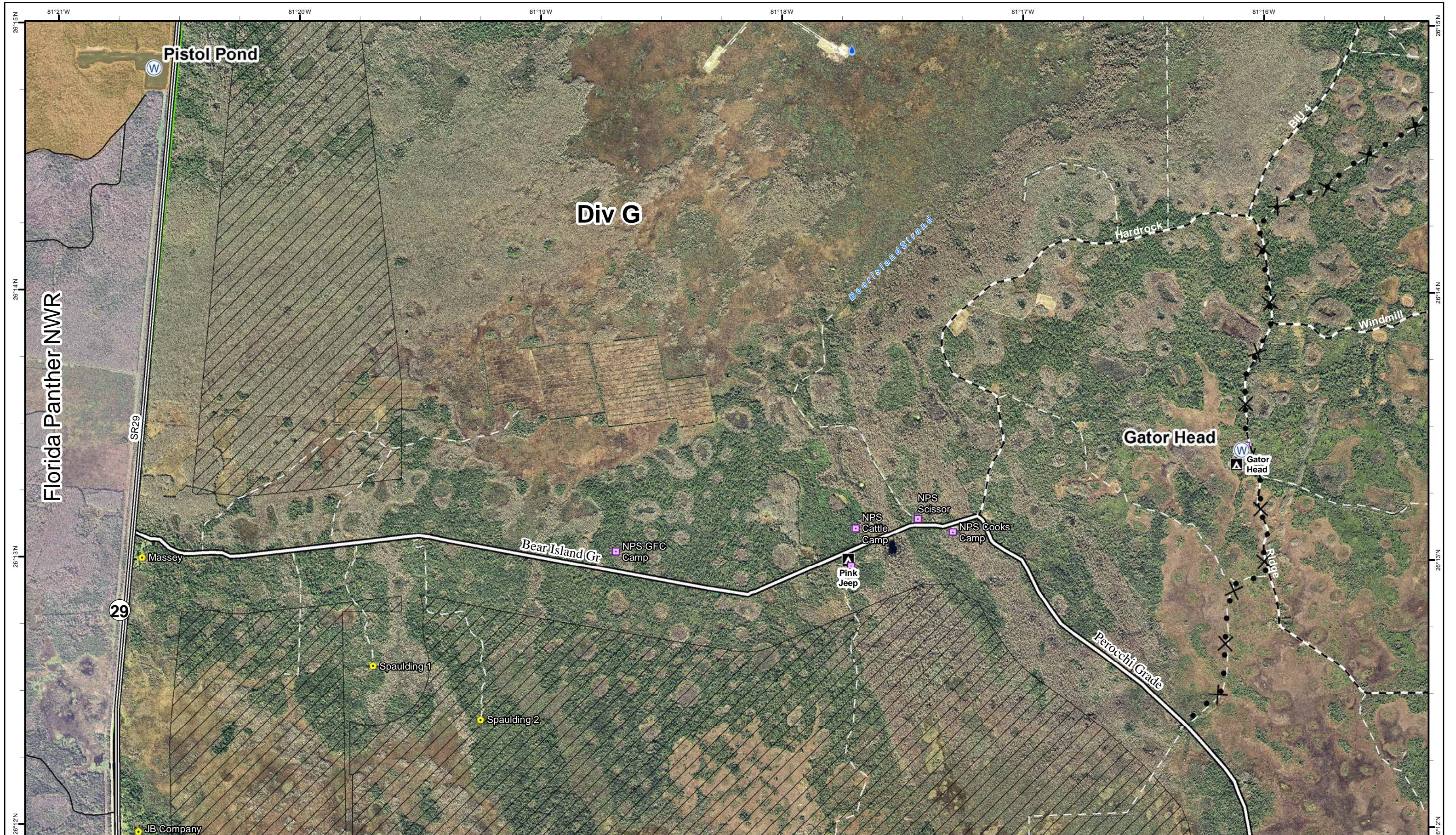
15,889 acres
Approximate Perimeter
as of 4/11/2017 @ 1720 hrs.

Legend

- ① Rally Point
- ⬆ Aerial Hazard
- ▣ Incident Command Post
- Ⓟ Pump
- ▬ Uncontrolled Fire Edge
- ⊗ Proposed Dozer Line
- ▨ Fire Polygon
- ▭ Bridge Location
- ▭ seminoole_reservation
-) Division
- Drop Point
- ▣ Mobile Weather Unit
- Ⓡ Repeater
- Ⓢ Water Source
- ⊗ Completed Dozer Line
- M - Mastication Line
- ▨ Historic Fire Perimeter
- ▭ Improved Road
- ▭ BICY Preserve
- Helispot
- Ⓢ Water Source
- ⊗ Completed Line
- ◆ Mile Marker
- ▭ Eligible for Wilderness
- ▭ TFR
- ▭ Primary Buggy Trail
- ▭ Non-Designated Trail (closed)
- ▭ Florida Trail
- ▭ TFR



NAD83 UTM 17



Cowbell Fire
FL-BCP-017033

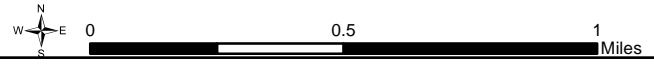
Operations Map
April 12, 2017
0800



15,889 acres
Approximate Perimeter
as of 4/11/2017 @ 1720 hrs.

Legend

- ① Rally Point
- ⊗ Proposed Dozer Line
- 💧 Hydro Station
- 🚧 Bridge Location
- ⊘ Eligible for Wilderness
- ⌋ Division
- 🔥 Fire History 2015 & 2016
- 🛣 Improved Road
- ⚡ BICY Preserve
- Ⓜ Non-Designated Trail (closed)
- 🚚 TFR
- 🚰 Water Source
- 🛤 Florida Trail

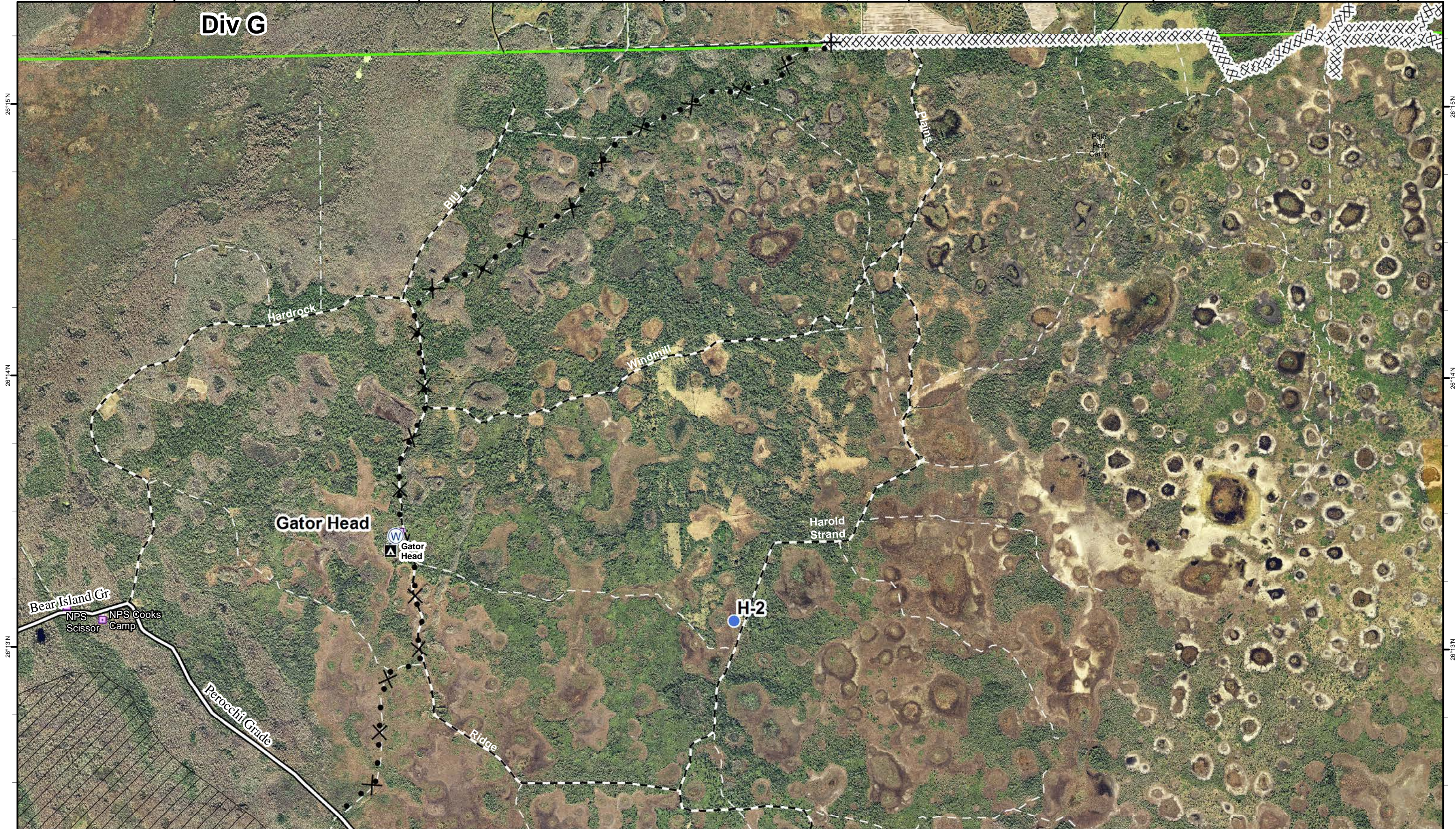


1	2	3	4	5
6	7	8	9	10



81°17W 81°16W 81°15W 81°14W 81°13W 81°12W

Div G



Cowbell Fire
 FL-BCP-017033

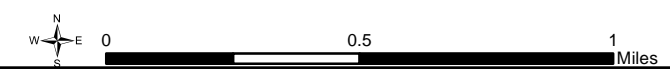
Operations Map
 April 12, 2017
 0800



15,889 acres
 Approximate Perimeter
 as of 4/11/2017 @ 1720 hrs.

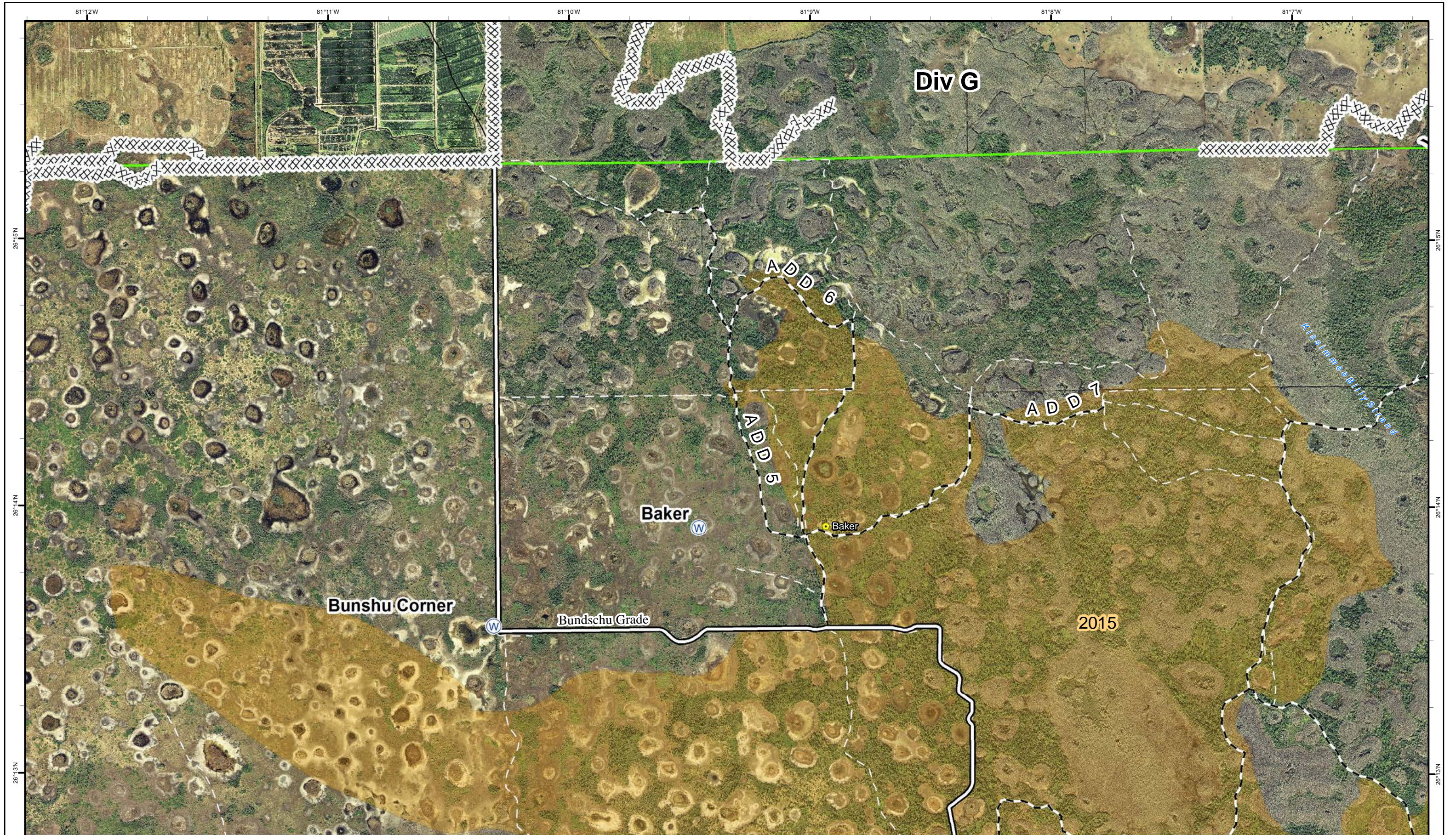
Legend

- ① Rally Point
- ⊕ Division
- Helispot
- ⊕ Water Source
- ⊕ Completed Dozer Line
- ⊕ Proposed Dozer Line
- ⊕ Fire History 2015 & 2016
- ⊕ Bridge Location
- ⊕ Improved Road
- ⊕ Non-Designated Trail (closed)
- ⊕ Florida Trail
- ⊕ Eligible for Wilderness
- ⊕ BICY Preserve
- ⊕ TFR



1	2	3	4	5
6	7	8	9	10





Cowbell Fire
FL-BCP-017033

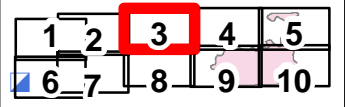
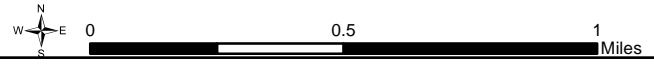
Operations Map
April 12, 2017
0800

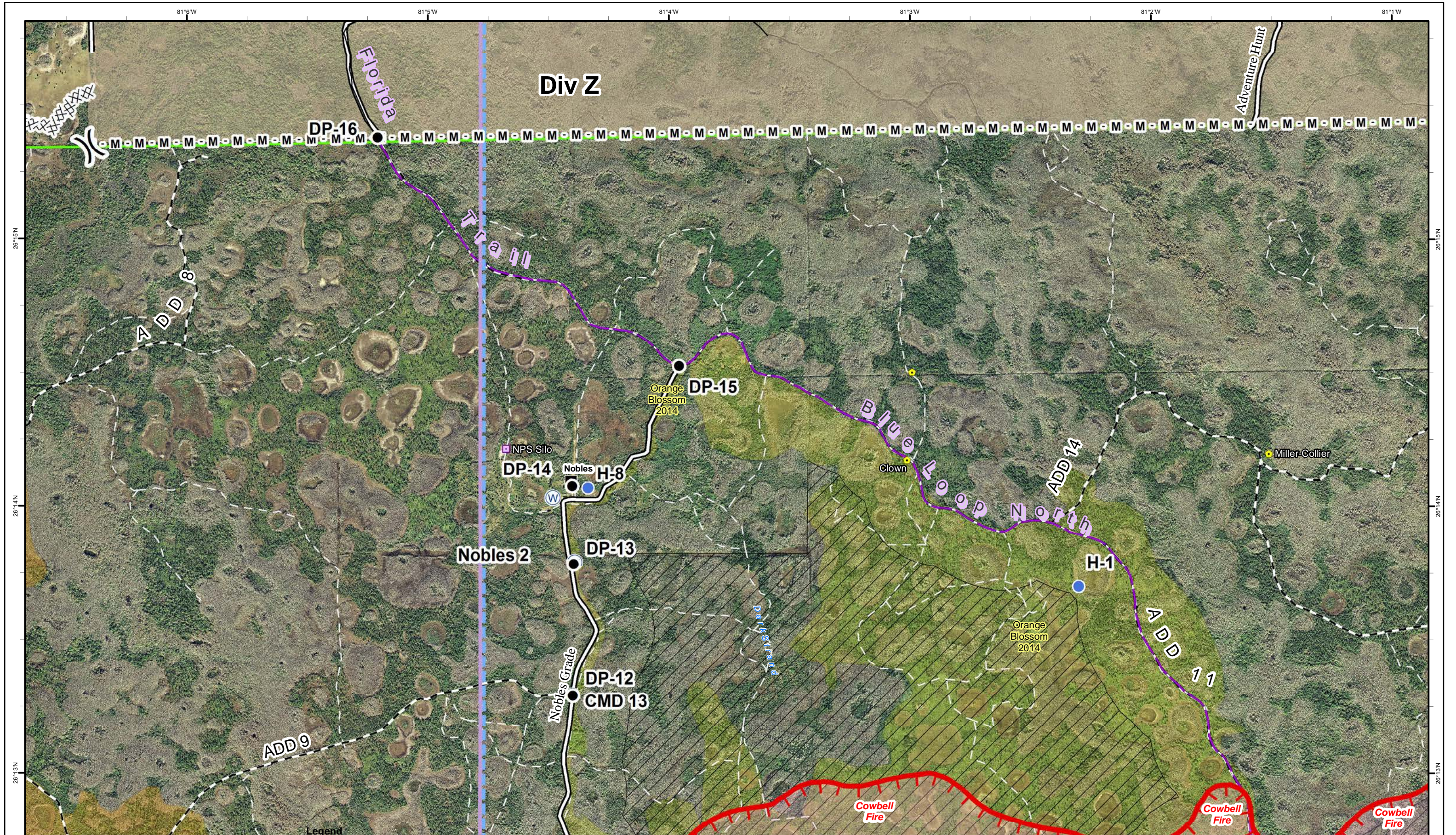


15,889 acres
Approximate Perimeter
as of 4/11/2017 @ 1720 hrs.

Legend

- ① Rally Point
- ⌋ Division
- Ⓜ Water Source
- ⊗⊗⊗ Completed Dozer Line
- Fire History 2015 & 2016
- ⚡ Bridge Location
- == Improved Road
- - Primary Buggy Trail
- - Non-Designated Trail (closed)
- Florida Trail
- ▭ BICY Preserve
- ▭ TFR





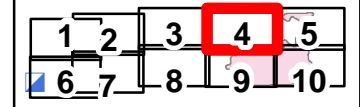
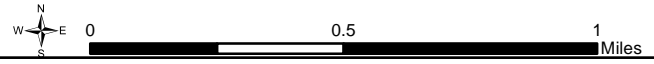
Cowbell Fire
FL-BCP-017033

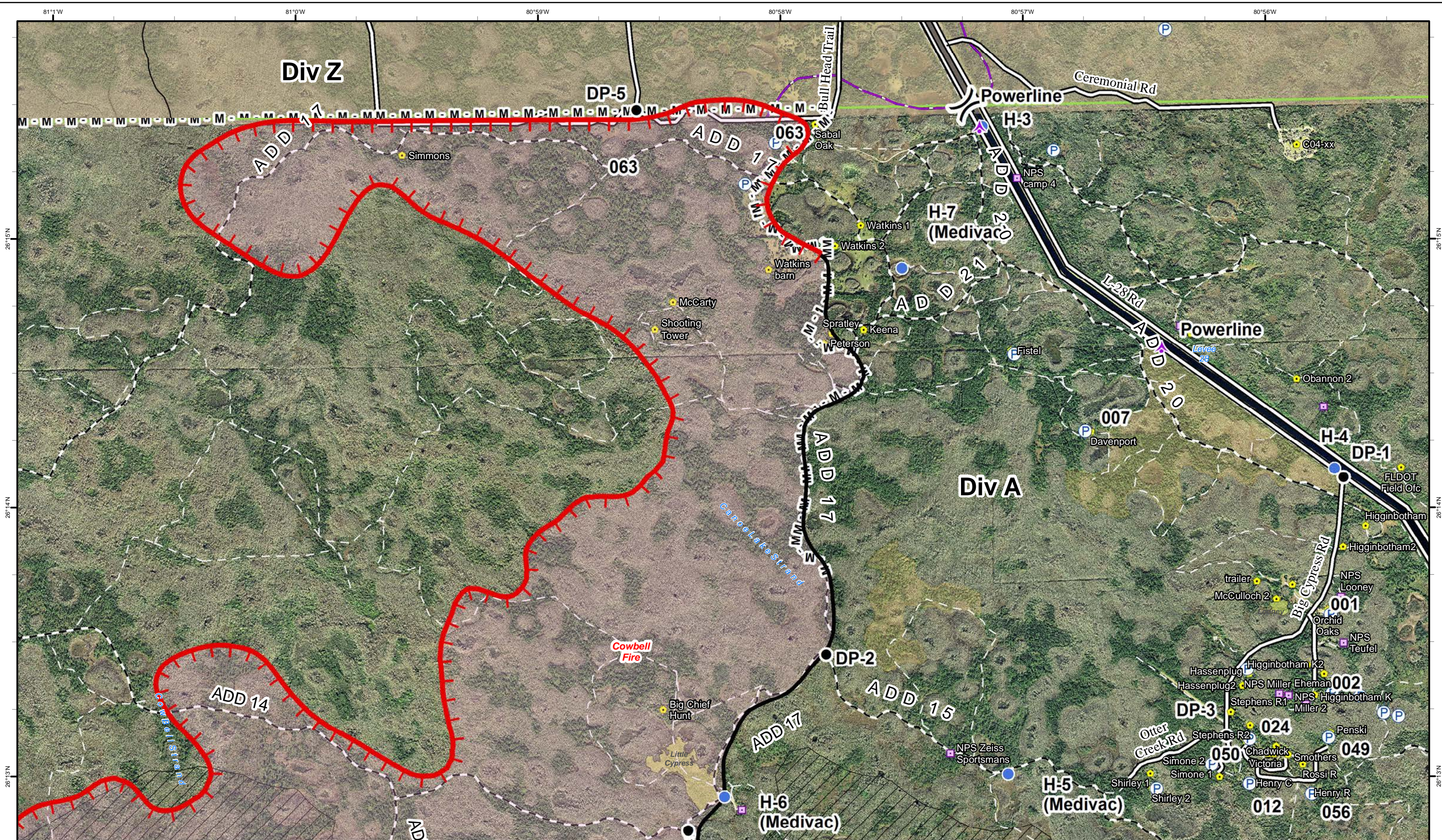
Operations Map
April 12, 2017
0800



15,889 acres
Approximate Perimeter
as of 4/11/2017 @ 1720 hrs.

- | | | | | | | |
|---------------|------------|----------------------------|--------------------------|---------------------------------|-----------------------|-----------------------------|
| ① Rally Point | ● Helispot | ⊕ Water Source | — Uncontrolled Fire Edge | — Bridge Location | — Primary Buggy Trail | ▨ Eligible for Wilderness |
|) Division | Ⓡ Repeater | ⊗ Completed Dozer Line | — Improved Road | — Non-Designated Trail (closed) | — Florida Trail | ▨ Seminole Tribe of Florida |
| ● Drop Point | | M - Mastication Line | | | | ▨ BICY Preserve |
| | | ▨ Fire Polygon | | | | ▨ TFR |
| | | ▨ Fire History 2015 & 2016 | | | | |





Cowbell Fire
FL-BCP-017033



Operations Map
April 12, 2017
0800

15,889 acres
 Approximate Perimeter
 as of 4/11/2017 @ 1720 hrs.


Legend

- ① Rally Point
- Drop Point
- Helispot
- Ⓟ Pump
- ⚡ Aerial Hazard
- Ⓗ Division
- Ⓜ Mastication Line
- ⚡ Uncontrolled Fire Edge
- Completed Line
- Fire Polygon
- Historic Fire Perimeter
- Fire History 2015 & 2016
- ⚡ Bridge Location
- Improved Road
- Primary Buggy Trail
- Non-Designated Trail (closed)
- Florida Trail
- ⚡ Eligible for Wilderness
- Seminole Tribe of Florida
- BICY Preserve
- Ⓜ TFR

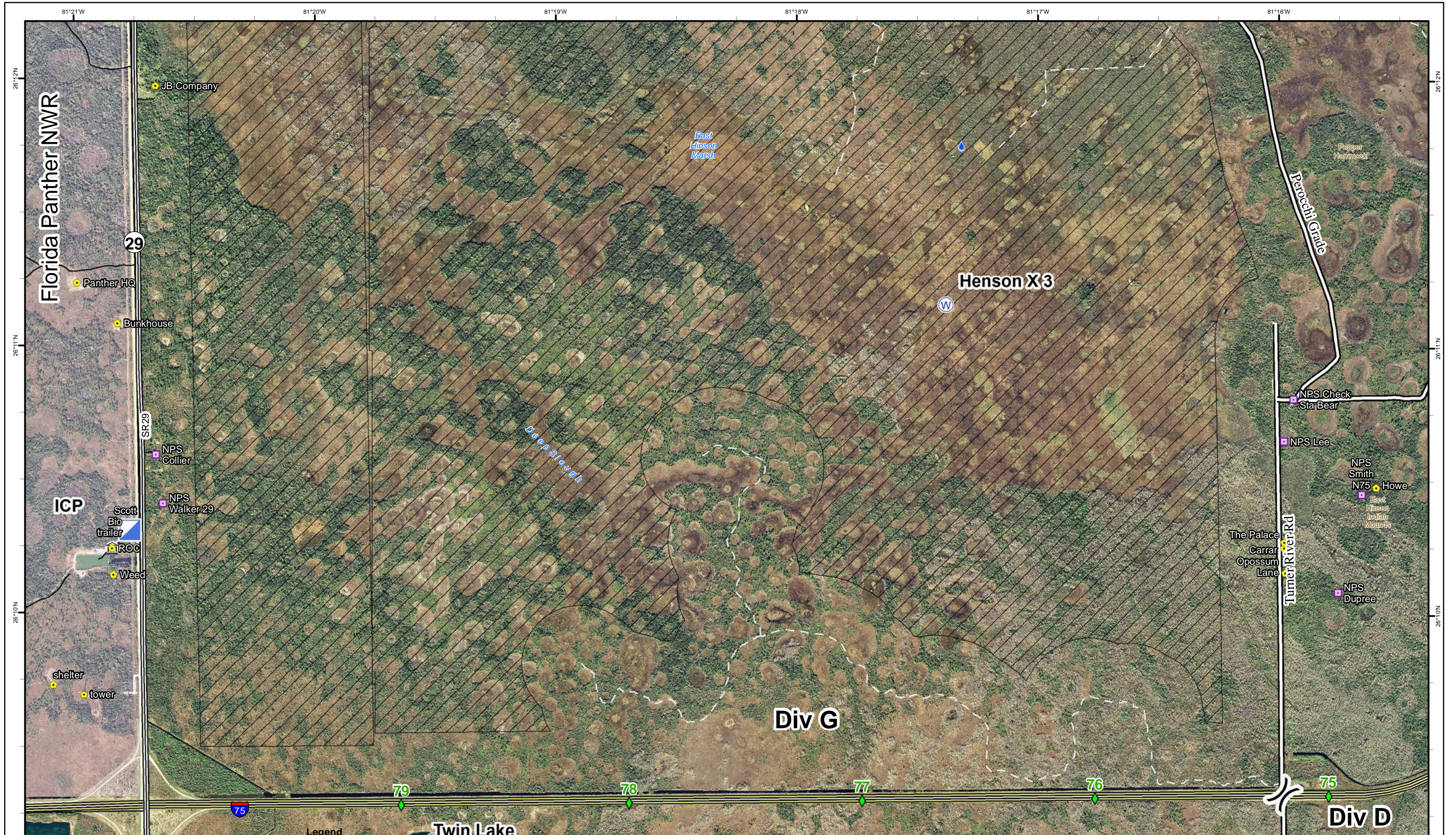
N
 W — E
 S

0 0.5 1
 Miles

1	2	3	4	5
6	7	8	9	10



NAD83 UTM 17



Cowbell Fire
 FL-BCP-017033


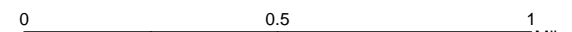
Operations Map
 April 12, 2017
 0800



15,889 acres
 Approximate Perimeter
 as of 4/11/2017 @ 1720 hrs.

Legend

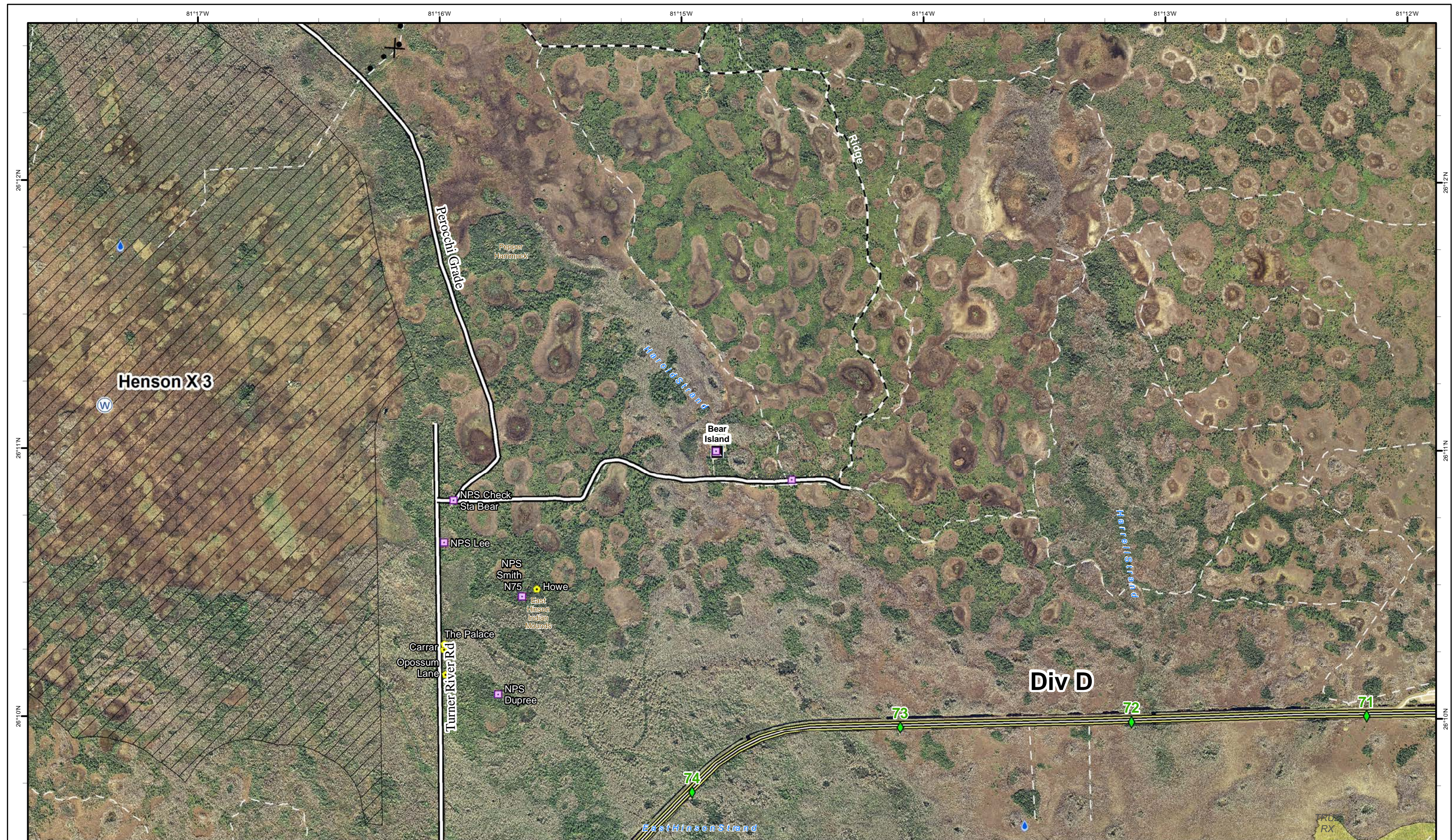
- ① Rally Point
- () Division
- Incident Command Post
- (W) Water Source
- ◆ Mile Marker
- Fire History 2015 & 2016
- 💧 Hydro Station
- 🚧 Bridge Location
- = Improved Road
- - - Non-Designated Trail (closed)
- Florida Trail
- ▨ Eligible for Wilderness
- ▭ BICY Preserve
- 🚚 TFR

NAD83 UTM 17

1	2	3	4	5
6	7	8	9	10





Cowbell Fire
FL-BCP-017033

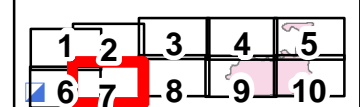
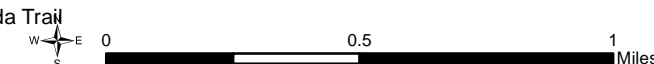
Operations Map
April 12, 2017
0800



15,889 acres
Approximate Perimeter
as of 4/11/2017 @ 1720 hrs.

Legend

- ① Rally Point
- ⊗ Proposed Dozer Line
- ▭ Historic Fire Perimeter
- ▭ Fire History 2015 & 2016
- 💧 Hydro Station
- ◆ Mile Marker
- 🚶 Bridge Location
- 🛣 Improved Road
- ⋯ Non-Designated Trail (closed)
- 🚶 Florida Trail
- 🏠 Eligible for Wilderness
- 🌿 BICY Preserve
- 🏠 TFR





Cowbell Fire
FL-BCP-017033

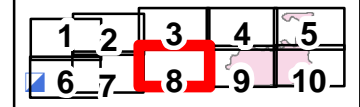
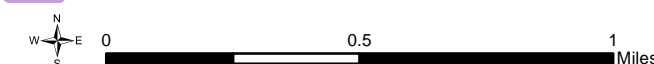
Operations Map
April 12, 2017
0800

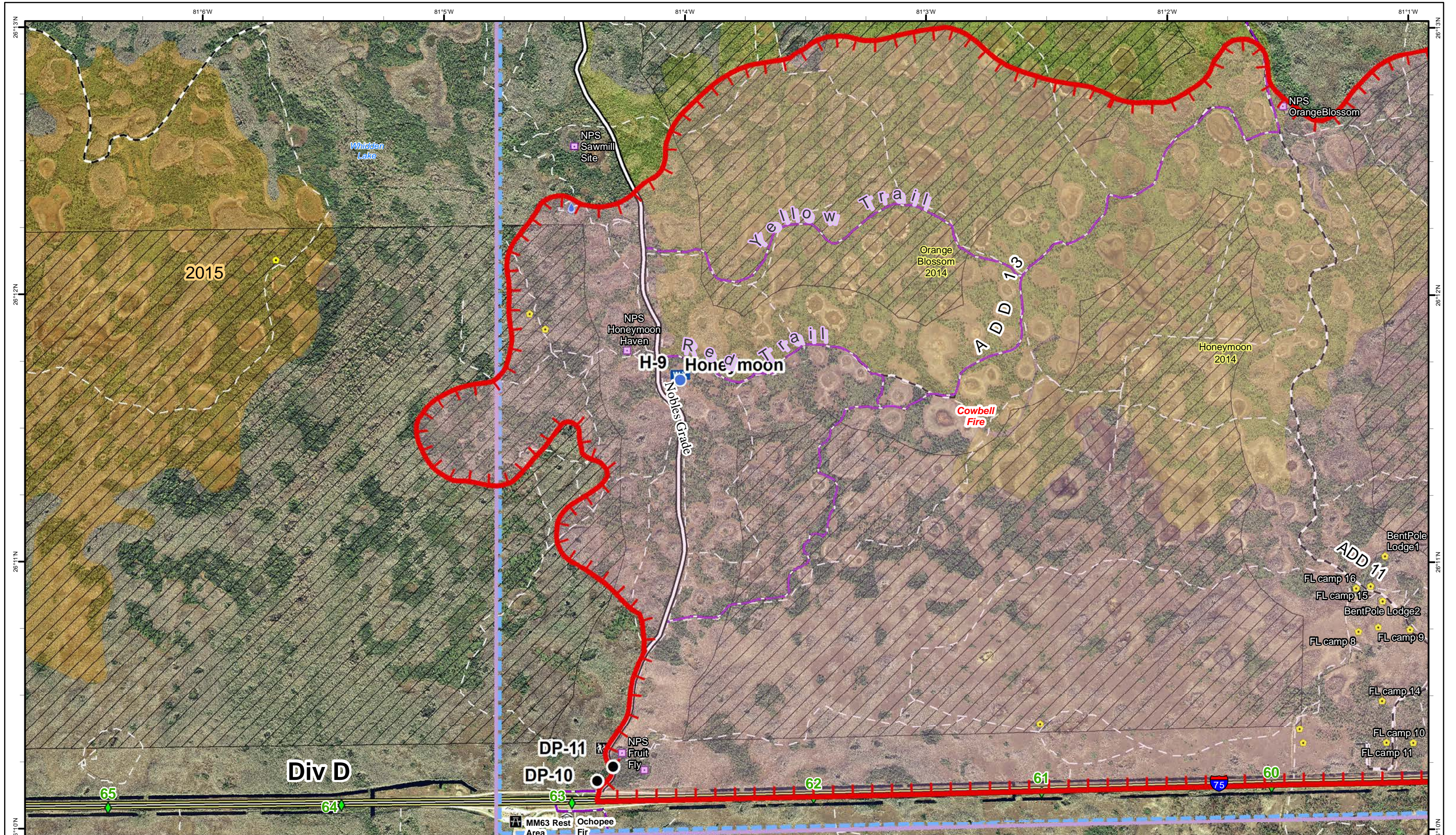


15,889 acres
Approximate Perimeter
as of 4/11/2017 @ 1720 hrs.

Legend

- ① Rally Point
- Ⓜ Division
- 📍 Mile Marker
- 🛤 Improved Road
- 🚶 Primary Buggy Trail
- 🚫 Non-Designated Trail (closed)
- 🛤 Florida Trail
- 🏠 Bridge Location
- 🌳 Eligible for Wilderness
- 🏠 BICY Preserve
- 🏠 TFR
- 🔥 Fire History 2015 & 2016





Cowbell Fire
FL-BCP-017033

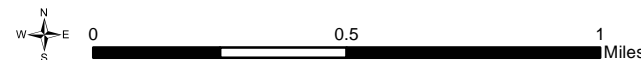
Operations Map
April 12, 2017
0800



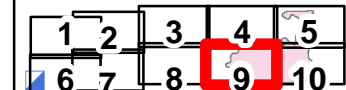
15,889 acres
Approximate Perimeter
as of 4/11/2017 @ 1720 hrs.

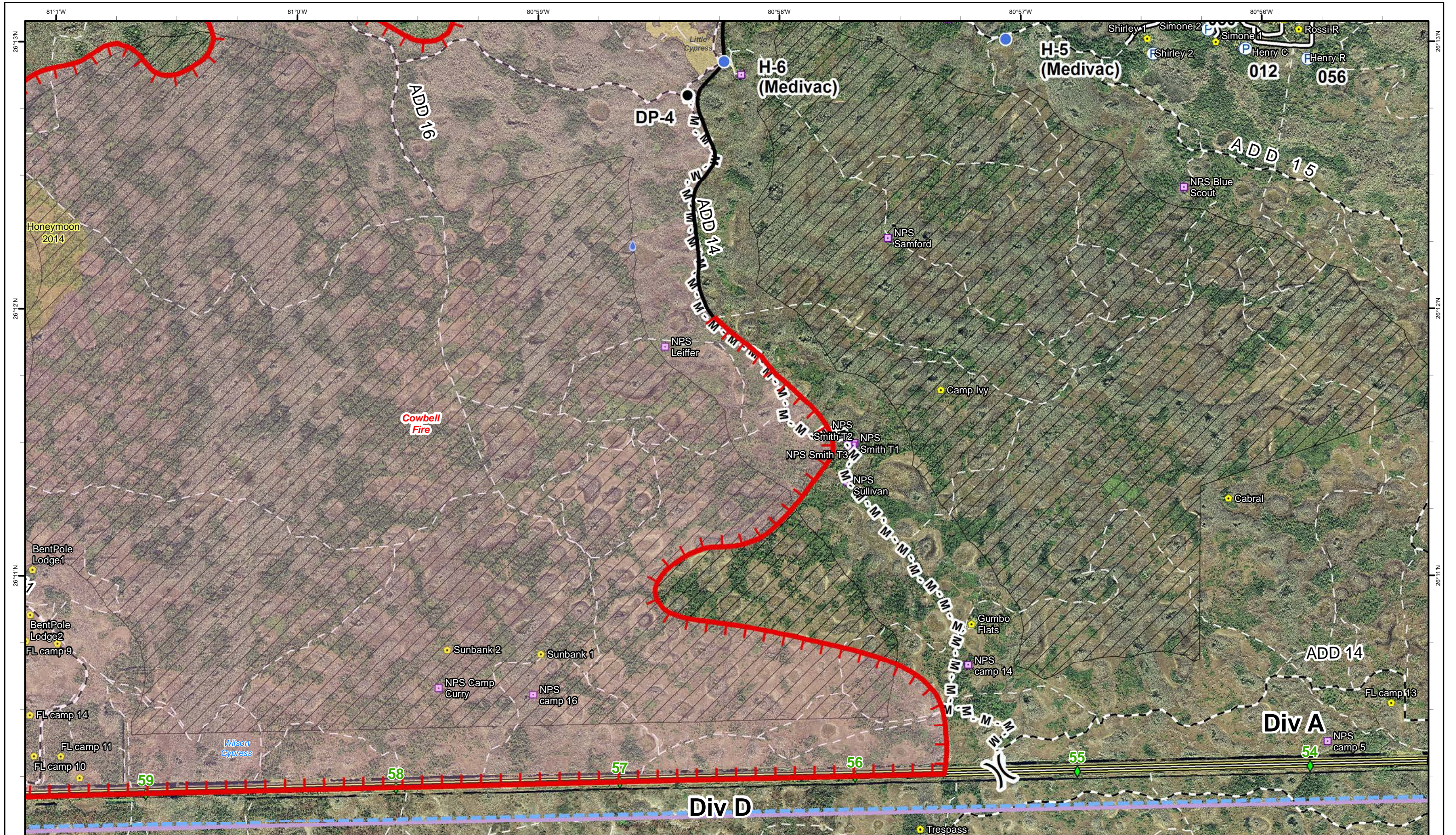
Legend

- ① Rally Point
- Ⓜ Division
- Drop Point
- Helispot
- WX Mobile Weather Unit
- Uncontrolled Fire Edge
- Fire Polygon
- Fire History 2015 & 2016
- Hydro Station
- Mile Marker
- Bridge Location
- Improved Road
- Primary Buggy Trail
- Non-Designated Trail (closed)
- Florida Trail
- Eligible for Wilderness
- BICY Preserve
- TFR



NAD83 UTM 17





Cowbell Fire
FL-BCP-017033

Operations Map
 April 12, 2017
 0800

15,889 acres
 Approximate Perimeter
 as of 4/11/2017 @ 1720 hrs.

Legend

- ① Rally Point
- ⦿ Helispot
- Ⓟ Pump
- Drop Point
- Uncontrolled Fire Edge
- Completed Line
- M - Mastication Line
- Fire Polygon
- Historic Fire Perimeter
- Fire History 2015 & 2016
- 💧 Hydro Station
- ◆ Mile Marker
- 🌉 Bridge Location
- == Improved Road
- - Primary Buggy Trail
- - Non-Designated Trail (closed)
- Florida Trail
- Eligible for W
- BICY Present
- TFR

Scale: 0 to 1 Miles

1	2	3	4	5
6	7	8	9	10

