

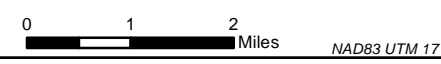
Cowbell Fire
FL-BCP-017033

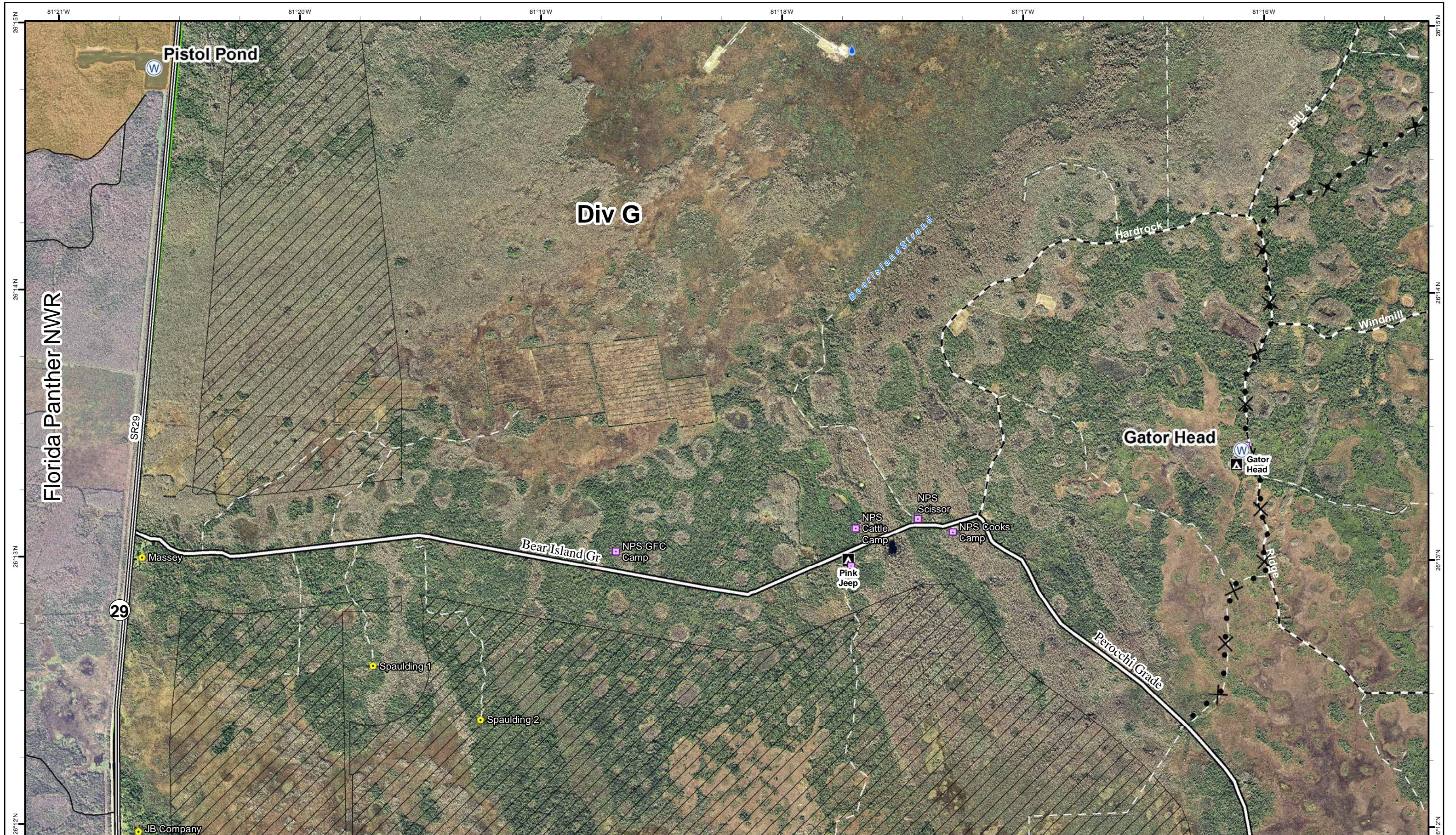
Index Map
April 13, 2017
0800



16,944 acres
 Approximate Perimeter
 as of 4/12/2017 @ 1000 hrs.

Legend									
① Rally Point	▲ Aerial Hazard	▣ Incident Command Post	Ⓟ Pump	▬ Uncontrolled Fire Edge	⊗ Proposed Dozer Line	▨ Fire Polygon	⚖ Bridge Location	▬ Primary Buggy Trail	▬ seminole_reservation
) Division	● Drop Point	▣ Repeater	Ⓡ Repeater	⊗ Completed Dozer Line	M - Mastication Line	▨ Historic Fire Perimeter	▬ Improved Road	▬ Non-Designated Trail (closed)	▣ BICY Preserve
● Helispot	WX Mobile Weather Unit	Ⓜ Water Source	Ⓜ Water Source	▬ Completed Line	● Hydro Station	◆ Mile Marker	▬ Florida Trail	▬ Eligible for Wilderness	▣ TFR





Cowbell Fire
 FL-BCP-017033

Operations Map
 April 13, 2017
 0800



16,944 acres
 Approximate Perimeter
 as of 4/12/2017 @ 1000 hrs.

Legend

- ① Rally Point
- ⌘ Division
- W Water Source
- ⊗ Proposed Dozer Line
- Fire History 2015 & 2016
- 💧 Hydro Station
- 🚚 Bridge Location
- 🛤 Improved Road
- ⋯ Non-Designated Trail (closed)
- 🚶 Florida Trail
- 🏠 Eligible for Wilderness
- 🌿 BICY Preserve
- 🚚 TFR

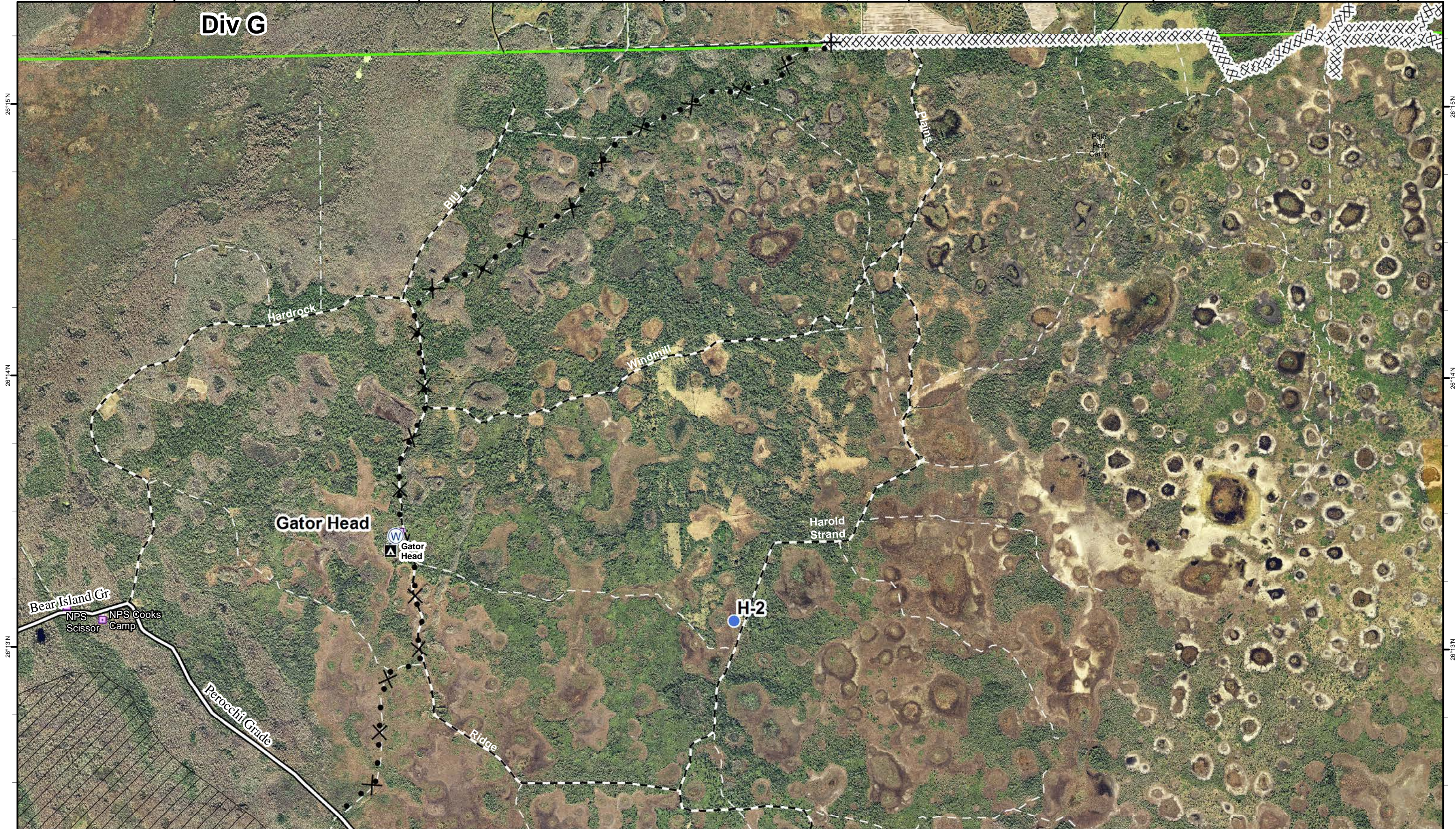


1	2	3	4	5
6	7	8	9	10



81°17'W 81°16'W 81°15'W 81°14'W 81°13'W 81°12'W

Div G



Cowbell Fire
 FL-BCP-017033

Operations Map
 April 13, 2017
 0800



16,944 acres
 Approximate Perimeter
 as of 4/12/2017 @ 1000 hrs.

Legend

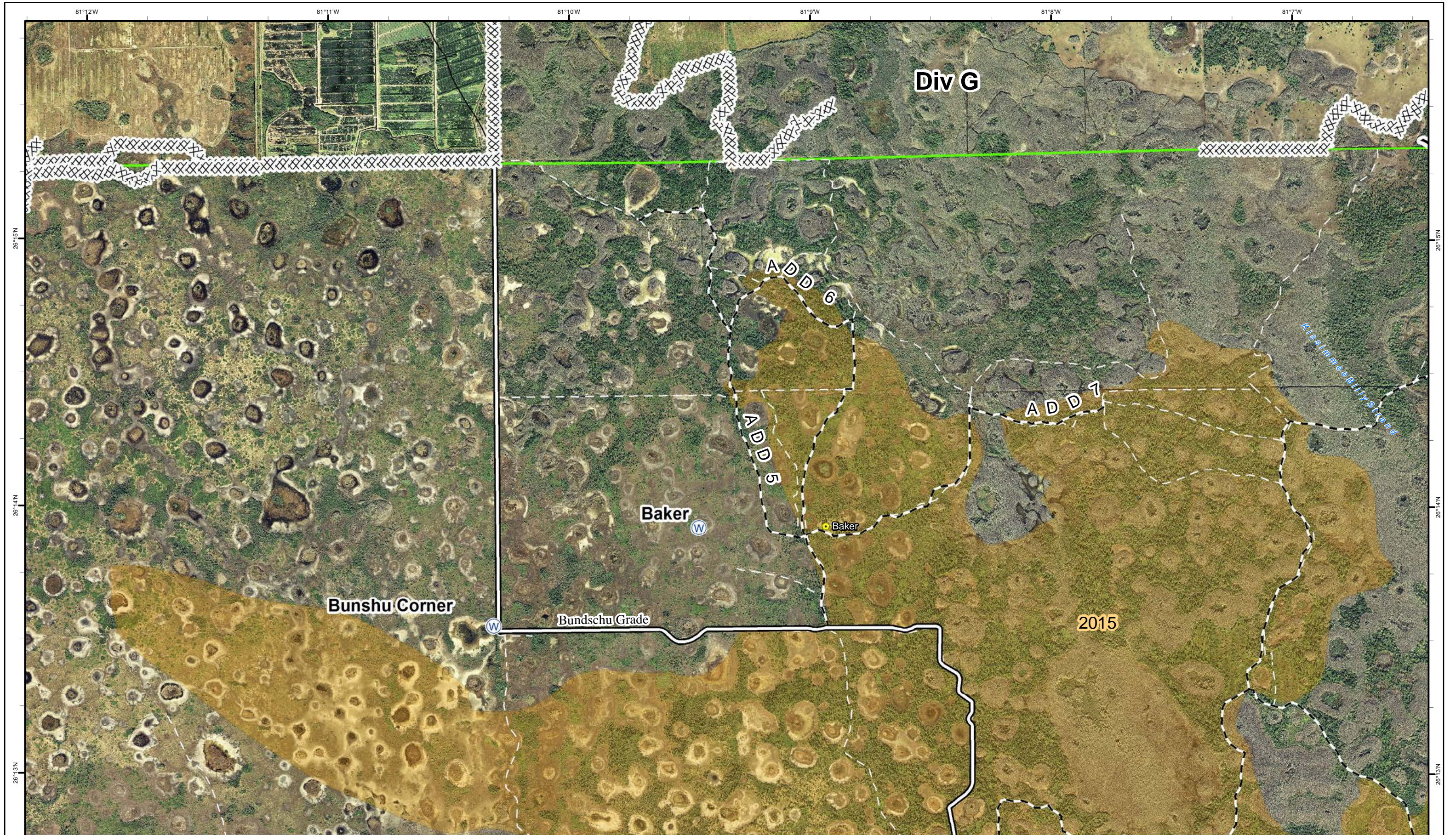
- ① Rally Point
- Ⓜ Water Source
- ⊗ Completed Dozer Line
- ⚡ Bridge Location
- Ⓜ Eligible for Wilderness
- Ⓜ Division
- ⊗ Proposed Dozer Line
- Ⓜ Improved Road
- Ⓜ Non-Designated Trail (closed)
- Helispot
- Fire History 2015 & 2016
- Florida Trail
- Ⓜ BICY Preserve
- Ⓜ TFR

N
 0 0.5 1
 S
 Miles

NAD83 UTM 17

1	2	3	4	5
6	7	8	9	10





Cowbell Fire
FL-BCP-017033

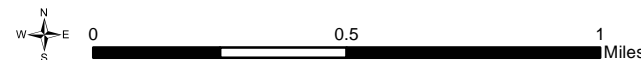
Operations Map
April 13, 2017
0800



16,944 acres
Approximate Perimeter
as of 4/12/2017 @ 1000 hrs.

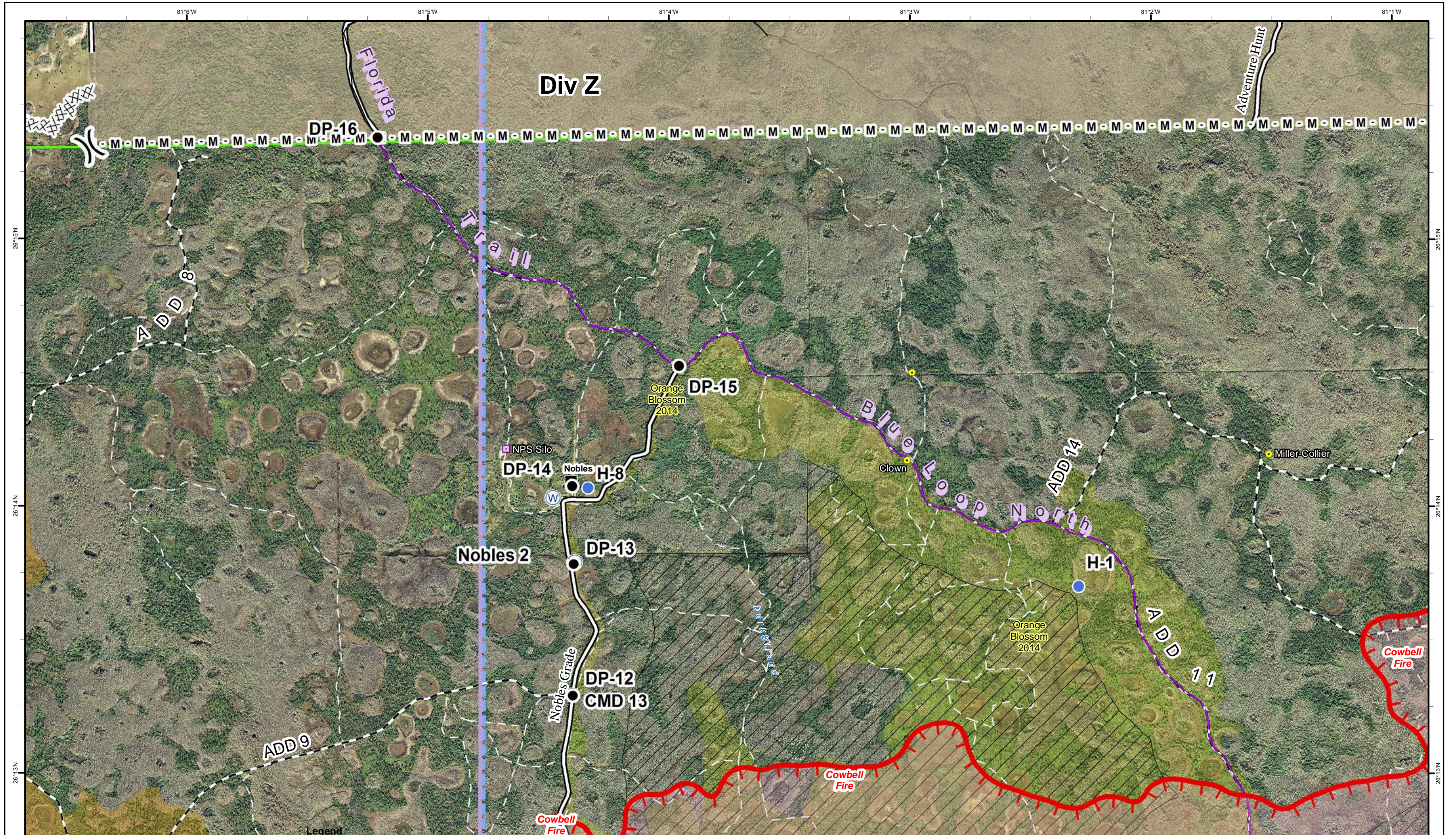
Legend

- ① Rally Point
- ⌋ Division
- Ⓜ Water Source
- ⊗⊗⊗ Completed Dozer Line
- Fire History 2015 & 2016
- ⚡ Bridge Location
- ▬ Improved Road
- Primary Buggy Trail
- - Non-Designated Trail (closed)
- Florida Trail
- ▭ BICY Preserve
- Ⓜ TFR



NAD83 UTM 17





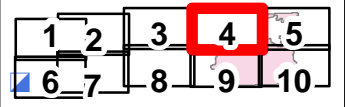
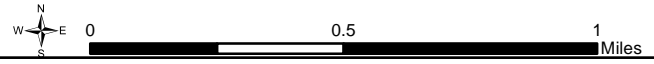
Cowbell Fire
FL-BCP-017033

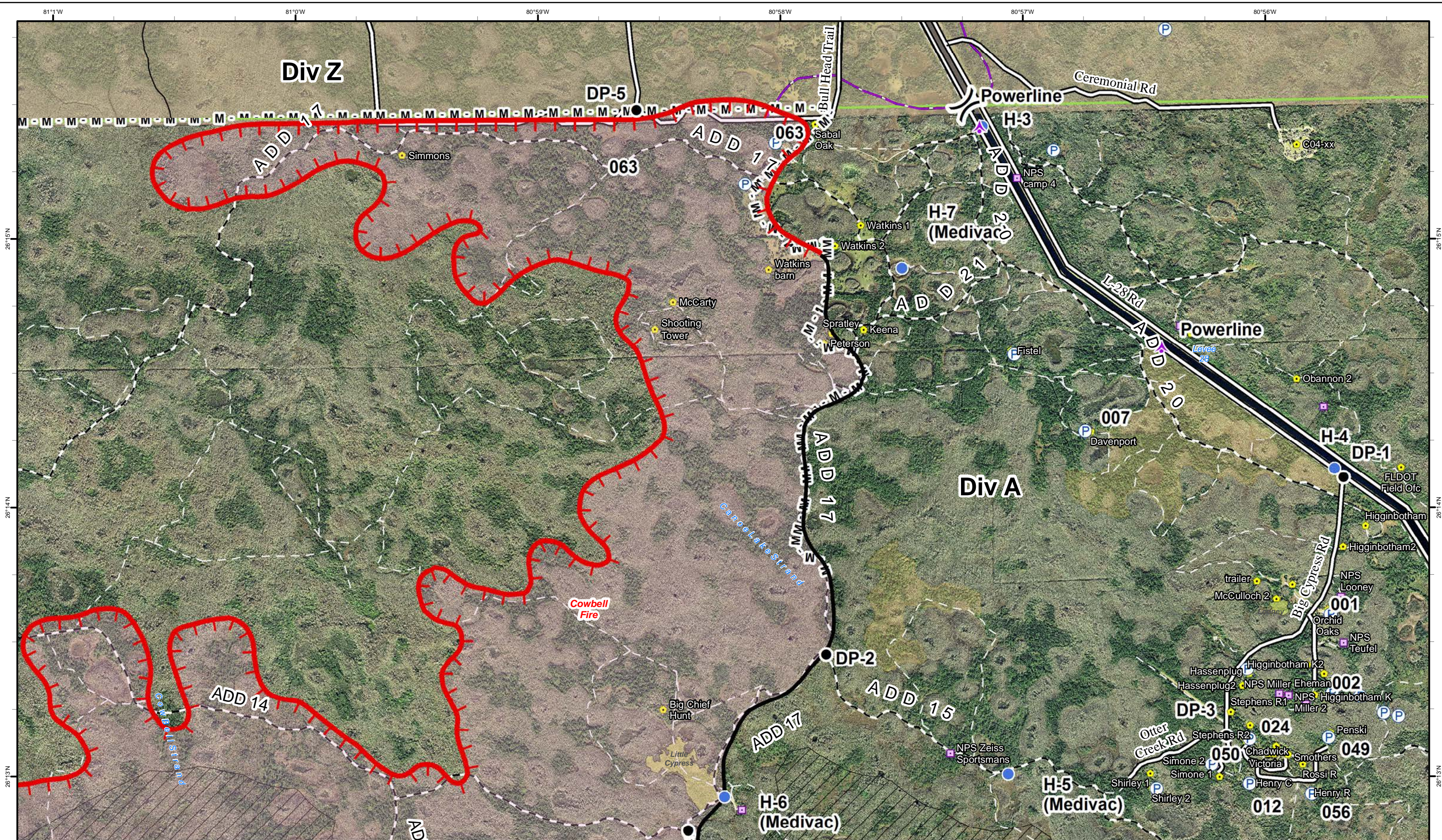
Operations Map
April 13, 2017
0800



16,944 acres
Approximate Perimeter
as of 4/12/2017 @ 1000 hrs.


- | | | | | | | |
|---------------|------------|----------------|----------------------------|-------------------|---------------------------------|-----------------------------|
| ① Rally Point | ● Helispot | ⊕ Water Source | ▬ Uncontrolled Fire Edge | ⚙ Bridge Location | ▬ Primary Buggy Trail | ▨ Eligible for Wilderness |
|) Division | Ⓡ Repeater | | ▬ Completed Dozer Line | ▬ Improved Road | ▬ Non-Designated Trail (closed) | ▨ Seminole Tribe of Florida |
| ● Drop Point | | | M - Mastication Line | | ▬ Florida Trail | ▨ BICY Preserve |
| | | | ▨ Fire Polygon | | | ▨ TFR |
| | | | ▨ Fire History 2015 & 2016 | | | |





Cowbell Fire
FL-BCP-017033

Operations Map
 April 13, 2017
 0800



16,944 acres
 Approximate Perimeter
 as of 4/12/2017 @ 1000 hrs.

Legend

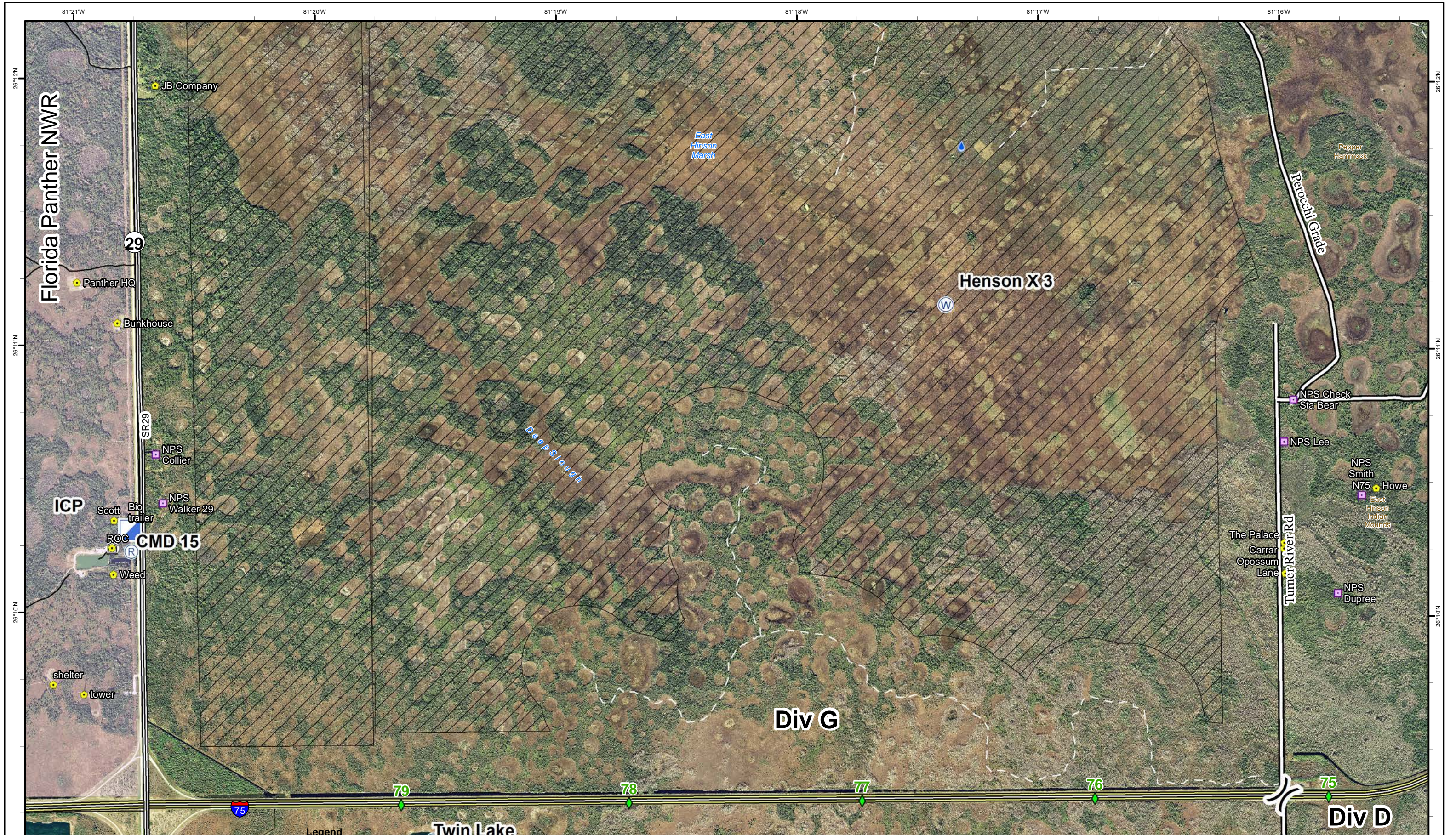
① Rally Point	● Drop Point	🔴 Uncontrolled Fire Edge	🟡 Historic Fire Perimeter	🌉 Bridge Location	— Primary Buggy Trail	🏞 Eligible for Wilderness
⎵ Division	● Helispot	— Completed Line	🟠 Fire History 2015 & 2016	== Improved Road	— Non-Designated Trail (closed)	🏠 Seminole Tribe of Florida
⚡ Aerial Hazard	Ⓟ Pump	M - Mastication Line		— Florida Trail	🟢 BICY Preserve	🚚 TFR

0 0.5 1 Miles

NAD83 UTM 17

1	2	3	4	5
6	7	8	9	10





Cowbell Fire
 FL-BCP-017033


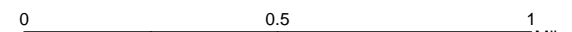
Operations Map
 April 13, 2017
 0800



16,944 acres
 Approximate Perimeter
 as of 4/12/2017 @ 1000 hrs.

Legend

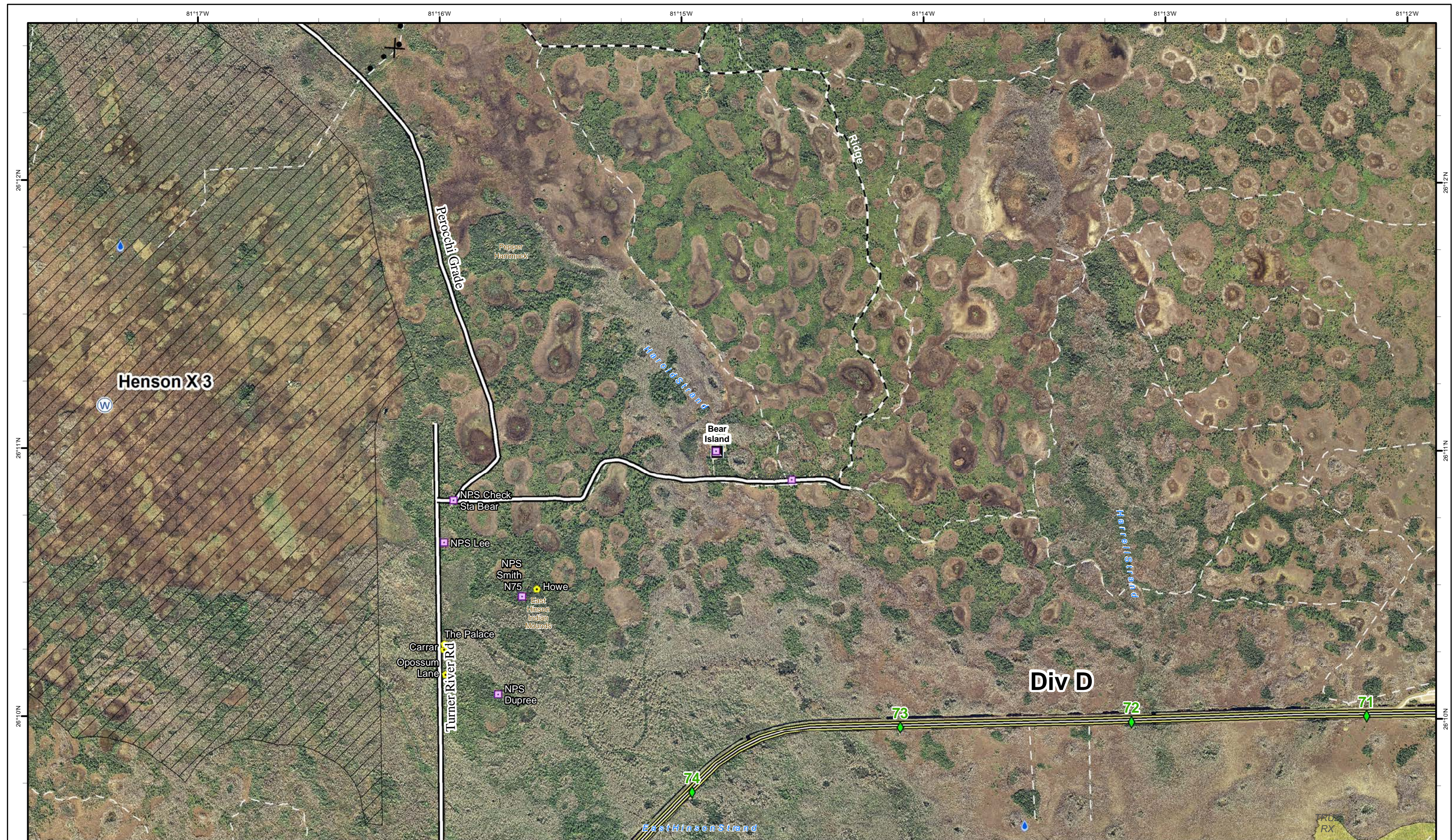
- ① Rally Point
- Ⓡ Repeater
- 🔥 Fire History 2015 & 2016
- 💧 Hydro Station
- 🌉 Bridge Location
- 🌿 Eligible for Wilderness
-) (Division
- Ⓜ Water Source
- 🛣 Improved Road
- 📏 Mile Marker
- 🚚 BICY Preserve
- 🚚 TFR
- 🚚 Incident Command Post
- Non-Designated Trail (closed)
- 🚚 Florida Trail

NAD83 UTM 17

1	2	3	4	5
6	7	8	9	10





Cowbell Fire
FL-BCP-017033

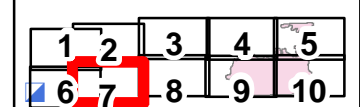
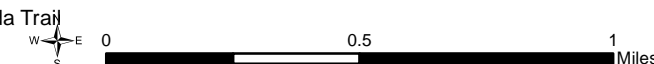
Operations Map
April 13, 2017
0800



16,944 acres
Approximate Perimeter
as of 4/12/2017 @ 1000 hrs.

Legend

- ① Rally Point
- ⌘ Proposed Dozer Line
- Historic Fire Perimeter
- Fire History 2015 & 2016
- Hydro Station
- Mile Marker
- Bridge Location
- Improved Road
- Non-Designated Trail (closed)
- Florida Trail
- Eligible for Wilderness
- BICY Preserve
- TFR





Cowbell Fire
FL-BCP-017033

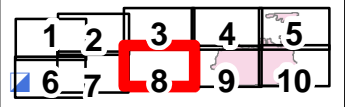
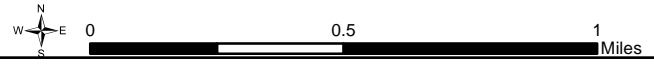
Operations Map
April 13, 2017
0800

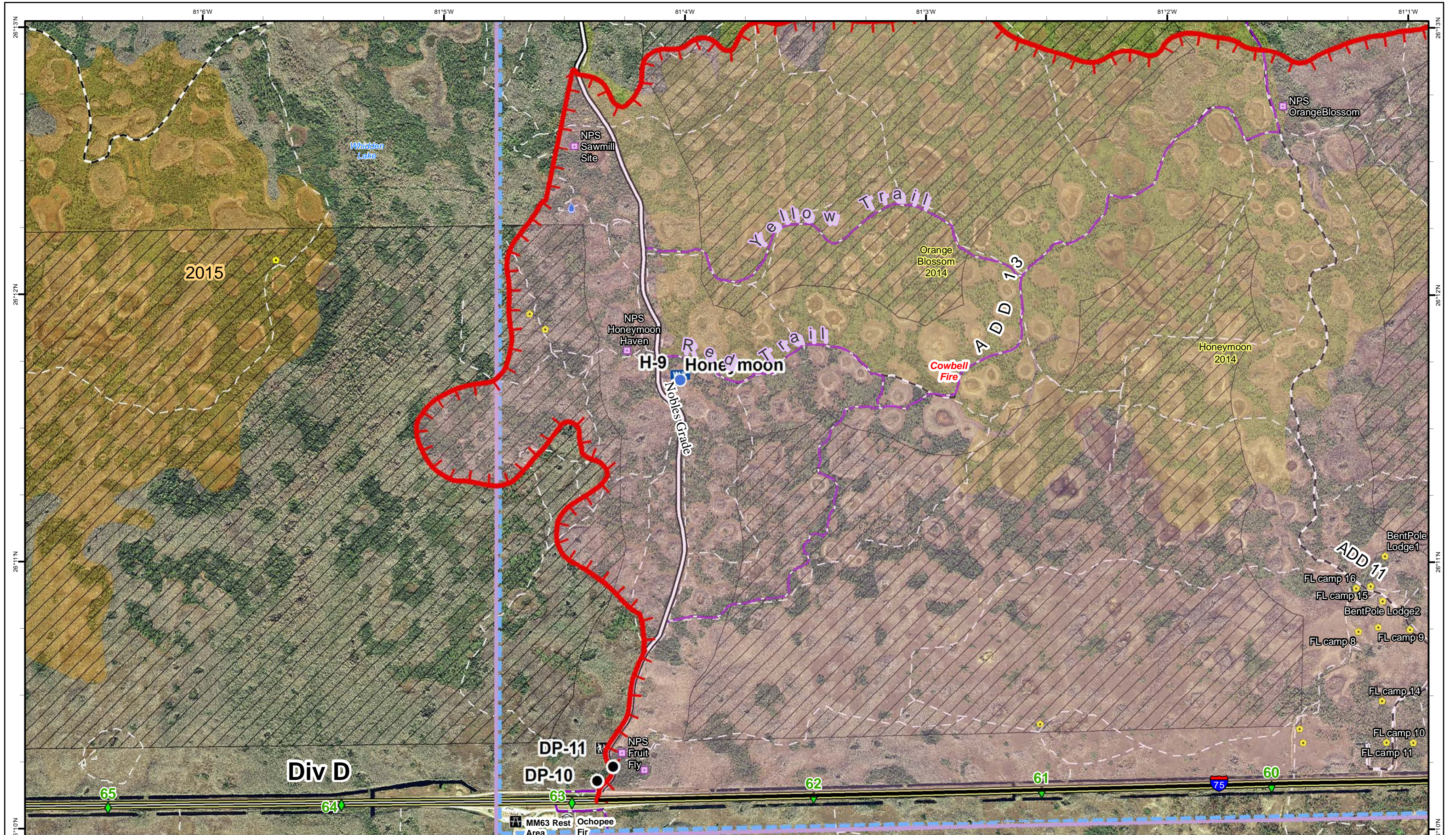


16,944 acres
Approximate Perimeter
as of 4/12/2017 @ 1000 hrs.

Legend

- ① Rally Point
- ⌋ Division
- 📍 Fire History 2015 & 2016
- 💧 Hydro Station
- 📍 Mile Marker
- 🚧 Bridge Location
- 🛣️ Improved Road
- 🚚 Primary Buggy Trail
- ⋯ Non-Designated Trail (closed)
- 🚶 Florida Trail
- 🏠 Eligible for Wilderness
- 🌿 BICY Preserve
- 🚚 TFR





Cowbell Fire
FL-BCP-017033

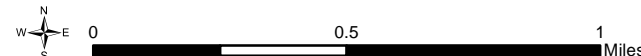
Operations Map
April 13, 2017
0800



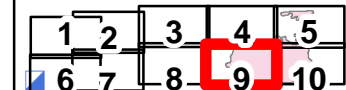
16,944 acres
Approximate Perimeter
as of 4/12/2017 @ 1000 hrs.

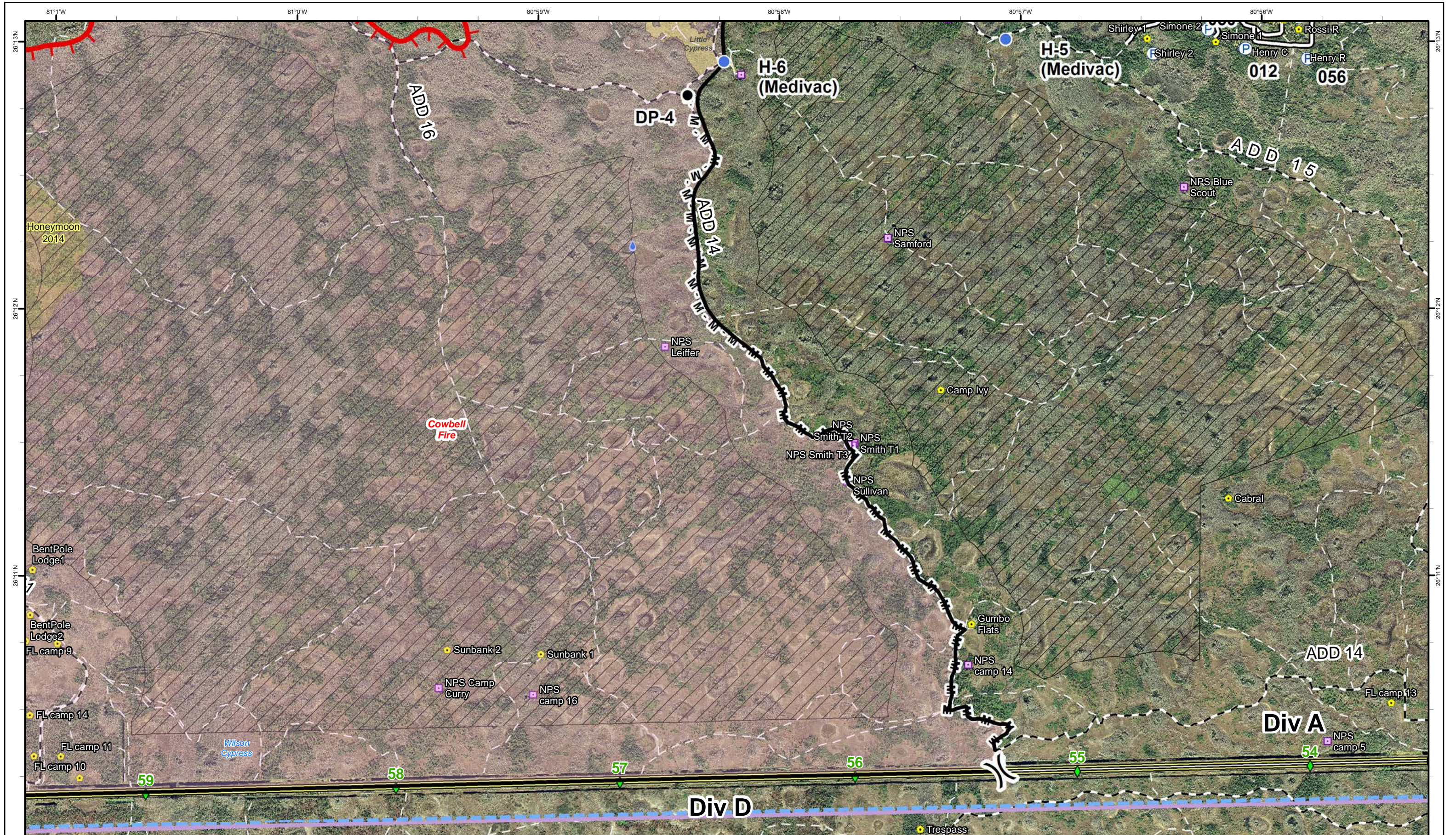
Legend

- ① Rally Point
- Ⓜ Division
- Drop Point
- Helispot
- WX Mobile Weather Unit
- Uncontrolled Fire Edge
- Completed Line
- Fire Polygon
- Fire History 2015 & 2016
- Hydro Station
- Mile Marker
- Bridge Location
- Improved Road
- Primary Buggy Trail
- Non-Designated Trail (closed)
- Florida Trail
- Eligible for Wilderness
- BICY Preserve
- TFR



NAD83 UTM 17





Cowbell Fire
FL-BCP-017033

Operations Map
 April 13, 2017
 0800

16,944 acres
 Approximate Perimeter
 as of 4/12/2017 @ 1000 hrs.

Legend

- ① Rally Point
- Ⓟ Division
- Drop Point
- Helispot
- Ⓟ Pump
- Uncontrolled Fire Edge
- Completed Line
- M - Mastication Line
- Fire Polygon
- Historic Fire Perimeter
- Fire History 2015 & 2016
- 💧 Hydro Station
- ◆ Mile Marker
- 🌉 Bridge Location
- Improved Road
- Primary Buggy Trail
- Non-Designated Trail (closed)
- Florida Trail
- 🏠 Eligible for W
- 🏠 BICY Present
- 🏠 TFR



1	2	3	4	5
6	7	8	9	10

