

Cowbell Fire
FL-BCP-017033

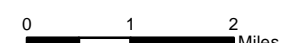
Index Map
April 15, 2017
0800



17,594 acres
 Approximate Perimeter
 as of 4/14/2017 @ 1600 hrs.

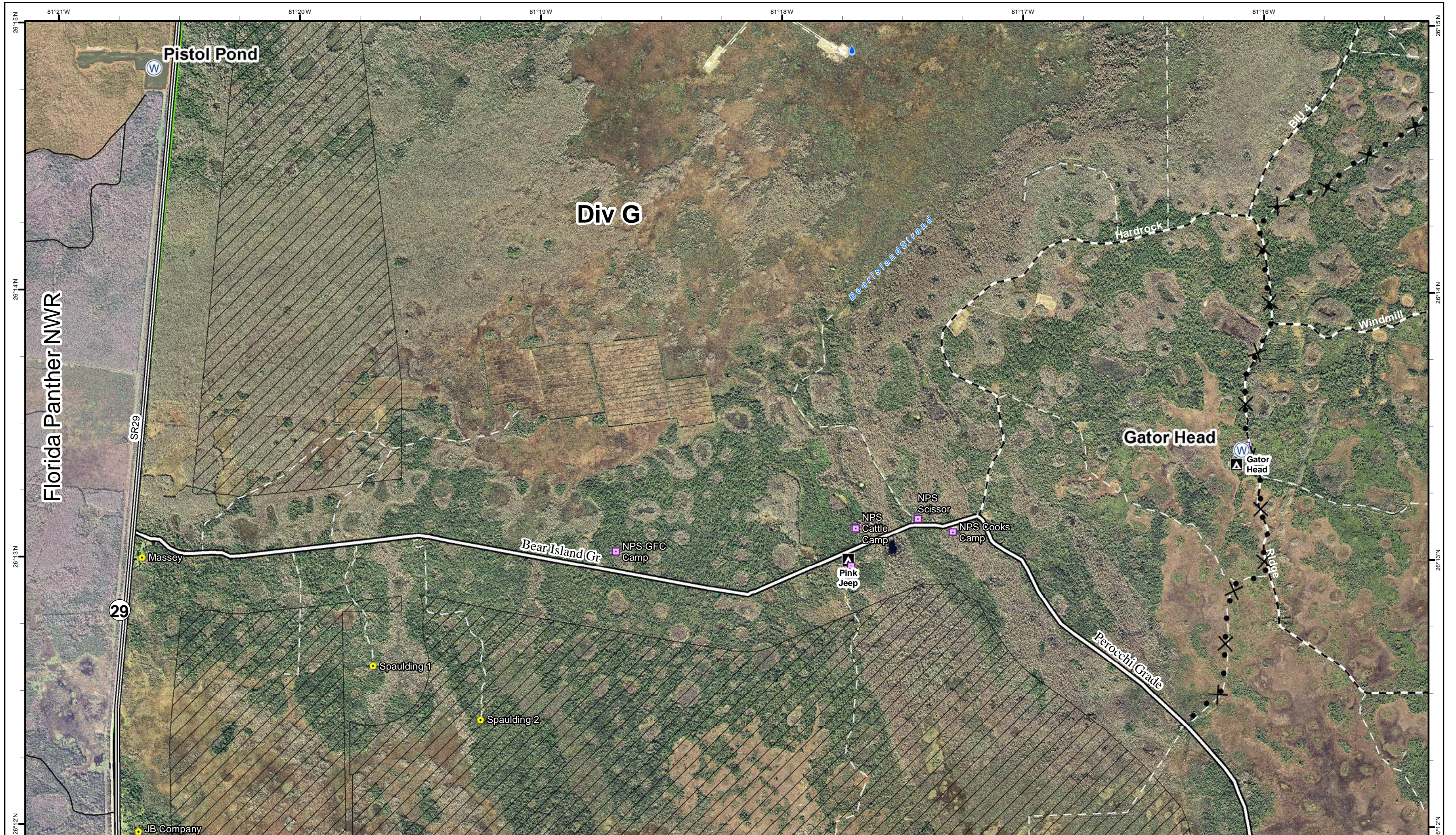
Legend

- | | | | | | | | | | |
|-----------------|-----------------|-------------------------|----------------|--------------------------|-----------------------|---------------------------|---------------------------|-----------------------------------|------------------------|
| (1) Rally Point | ▲ Aerial Hazard | ▣ Incident Command Post | Ⓟ Pump | ▬ Uncontrolled Fire Edge | ✂ Proposed Dozer Line | ▨ Fire Polygon | ⌈ Bridge Location | — Primary Buggy Trail | — seminole_reservation |
|) Division | ● Drop Point | Ⓜ Repeater | Ⓡ Repeater | ▬ Completed Dozer Line | M - Mastication Line | ▨ Historic Fire Perimeter | ▬ Improved Road | - - Non-Designated Trail (closed) | ▣ BICY Preserve |
| | ● Helispot | WX Mobile Weather Unit | Ⓜ Water Source | ▬ Completed Line | | ● Hydro Station | ▬ Florida Trail | ▣ TFR | |
| | | | | | | ◆ Mile Marker | ▣ Eligible for Wilderness | | |
| | | | | | | ✂ ORV Canal Crossing | | | |



NAD83 UTM 17





Cowbell Fire
 FL-BCP-017033

Operations Map
 April 15, 2017
 0800



17,594 acres
 Approximate Perimeter
 as of 4/14/2017 @ 1600 hrs.

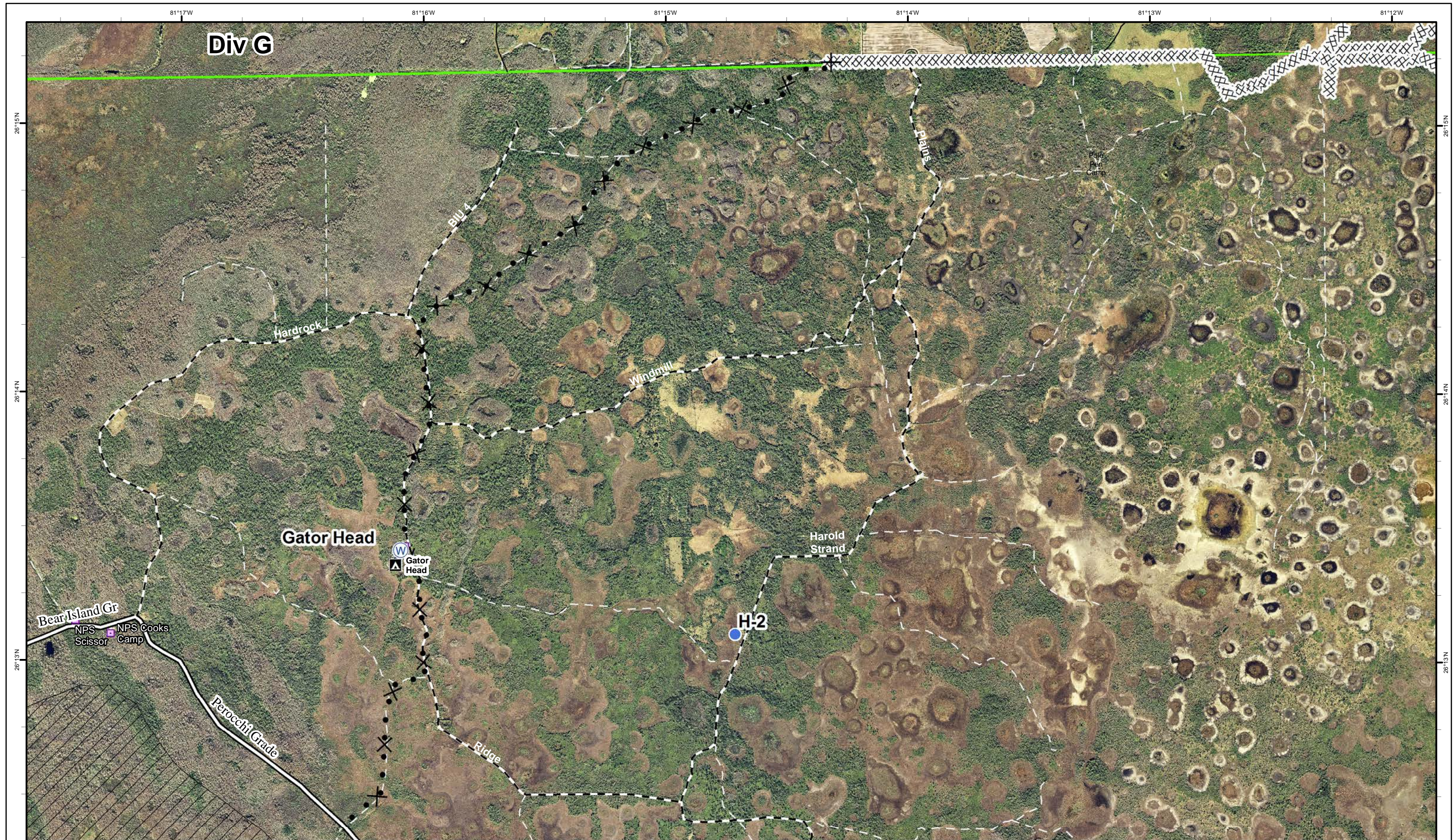
Legend

- ① Rally Point
- ⌘ Proposed Dozer Line
- 💧 Hydro Station
- 🚚 Bridge Location
- ⊠ Eligible for Wilderness
- ⌋ Division
- 🔥 Fire History 2015 & 2016
- 🛣 Improved Road
- ⬜ BICY Preserve
- Ⓜ TFR
- Ⓜ Water Source
- ⬜ Non-Designated Trail (closed)
- 🚶 Florida Trail



1	2	3	4	5
6	7	8	9	10





Cowbell Fire
FL-BCP-017033

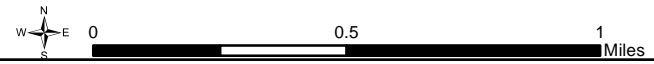
Operations Map
April 15, 2017
0800



17,594 acres
Approximate Perimeter
as of 4/14/2017 @ 1600 hrs.

Legend

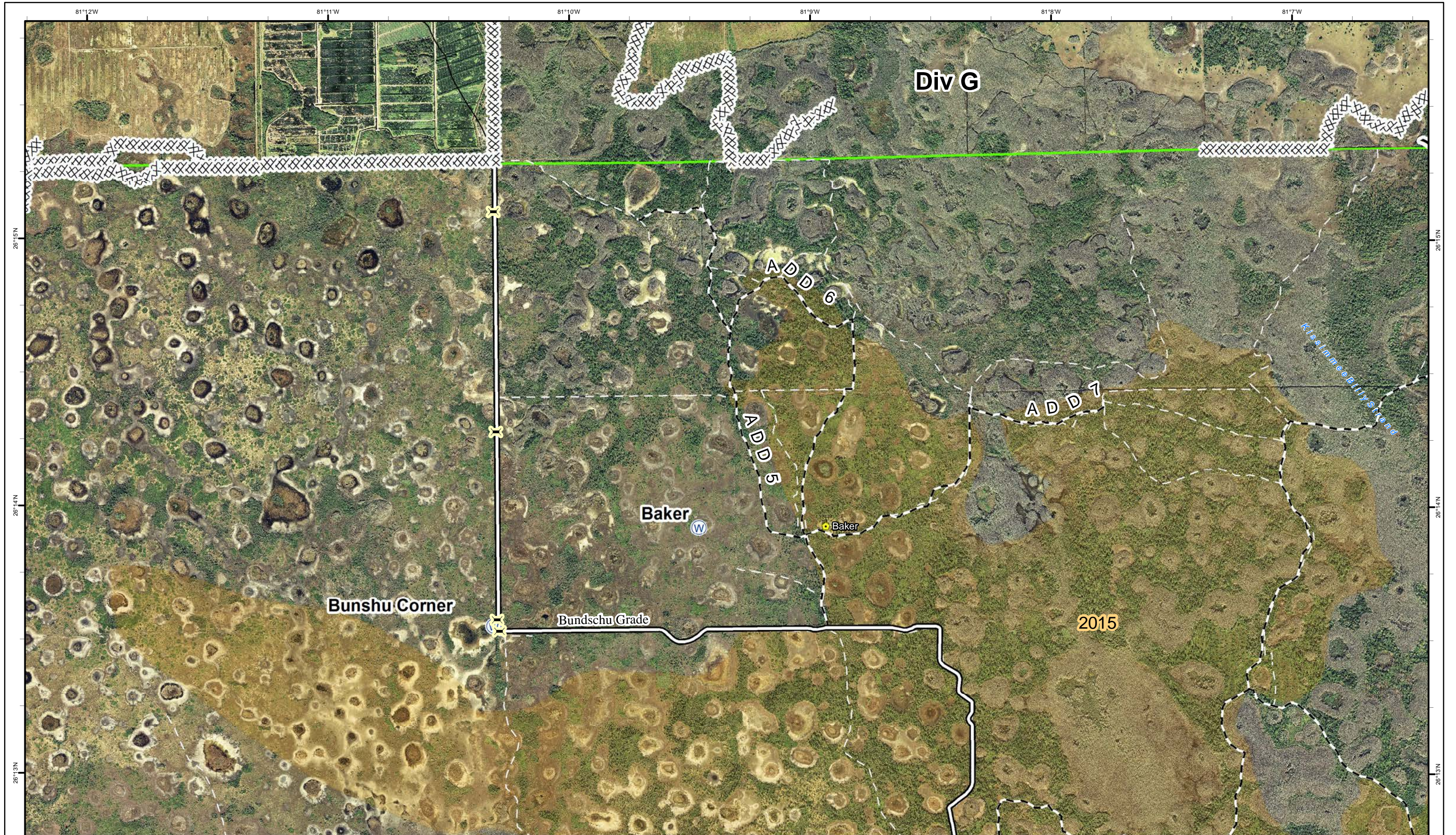
- ① Rally Point
- Ⓜ Water Source
- ⊗ Completed Dozer Line
- ⚡ Bridge Location
- ⊠ Eligible for Wilderness
- ⌋ Division
- ⊗ Proposed Dozer Line
- ⚡ Improved Road
- Ⓜ BICY Preserve
- Helispot
- Ⓜ Fire History 2015 & 2016
- Non-Designated Trail (closed)
- Ⓜ TFR
- Florida Trail



NAD83 UTM 17

1	2	3	4	5
6	7	8	9	10





Cowbell Fire
FL-BCP-017033

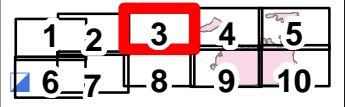
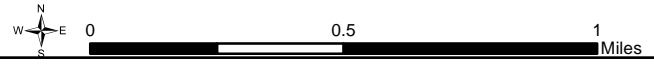
Operations Map
April 15, 2017
0800

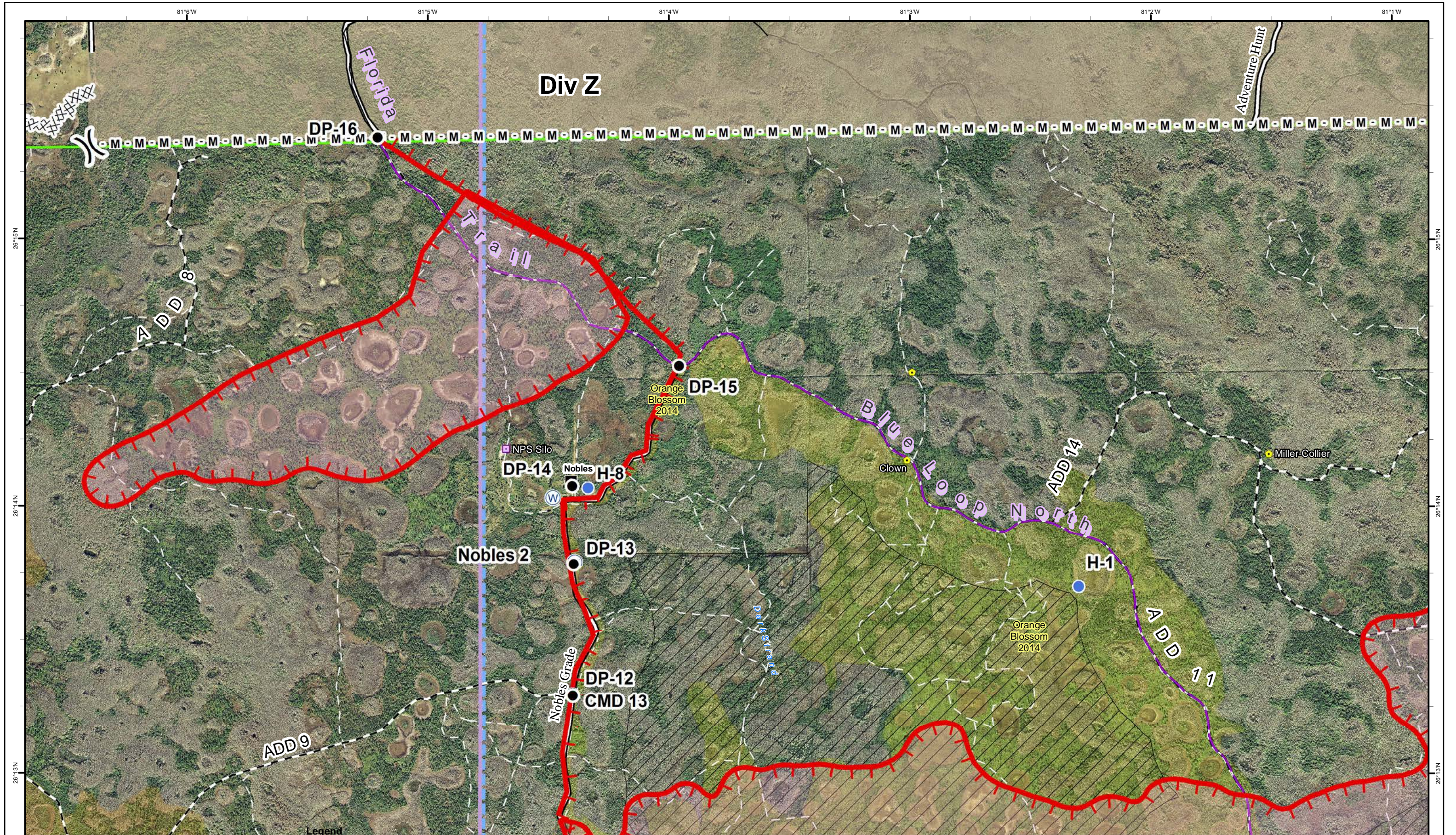


17,594 acres
Approximate Perimeter
as of 4/14/2017 @ 1600 hrs.

Legend

- ① Rally Point
- ⌋ Division
- Ⓜ Water Source
- XXXX Completed Dozer Line
- Fire History 2015 & 2016
- ORV Canal Crossing
- Bridge Location
- Improved Road
- Primary Buggy Trail
- Non-Designated Trail (closed)
- Florida Trail
- BICY Preserve
- TFR





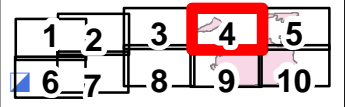
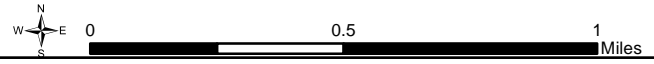
Cowbell Fire
FL-BCP-017033

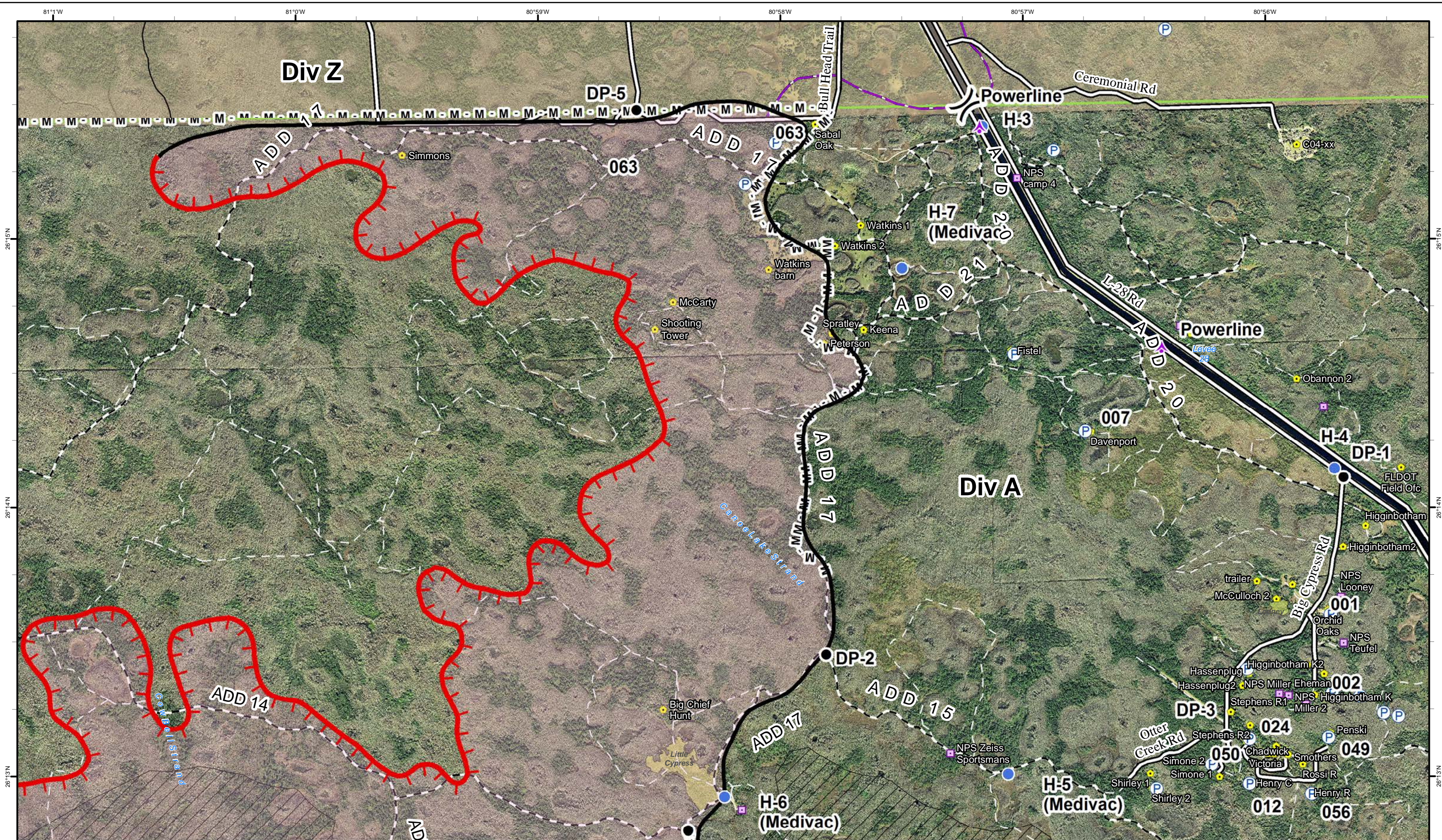
Operations Map
April 15, 2017
0800



17,594 acres
Approximate Perimeter
as of 4/14/2017 @ 1600 hrs.


- | | | | | | | |
|---------------|------------|------------------------|----------------------------|---------------------------------|-----------------------|-----------------------------|
| ① Rally Point | ● Helispot | ⊕ Water Source | ▬ Uncontrolled Fire Edge | ▬ Bridge Location | ▬ Primary Buggy Trail | ▨ Eligible for Wilderness |
|) Division | Ⓡ Repeater | ⊗ Completed Dozer Line | ▬ Improved Road | ▬ Non-Designated Trail (closed) | ▬ Florida Trail | ▨ Seminole Tribe of Florida |
| ● Drop Point | | M - Mastication Line | ▨ Fire Polygon | | | ▨ BICY Preserve |
| | | | ▨ Fire History 2015 & 2016 | | | ▨ TFR |





Cowbell Fire
FL-BCP-017033

Operations Map
April 15, 2017
0800



 17,594 acres
 Approximate Perimeter
 as of 4/14/2017 @ 1600 hrs.

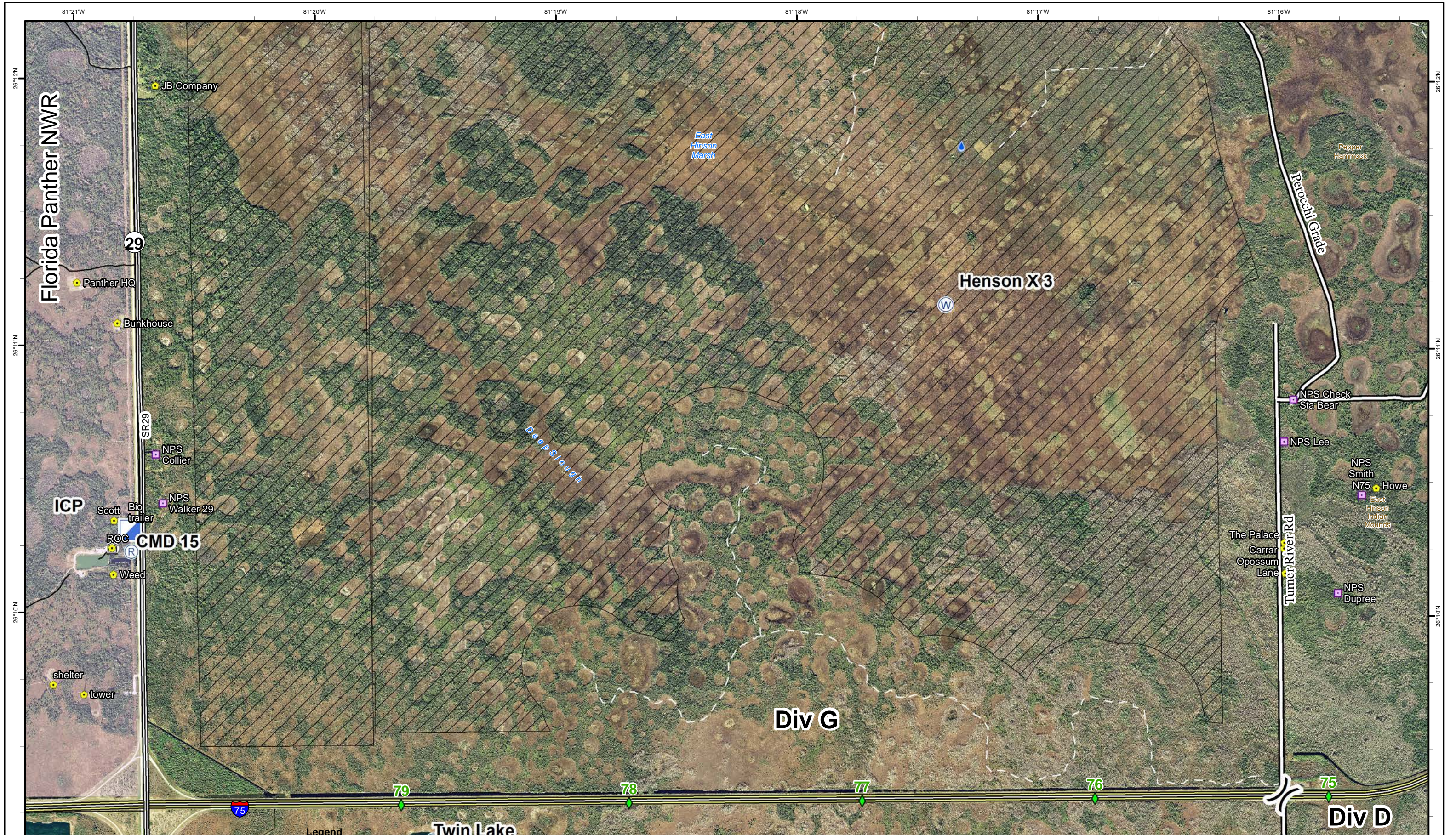
Legend

① Rally Point	● Drop Point	Uncontrolled Fire Edge	Historic Fire Perimeter	Bridge Location	Primary Buggy Trail	Eligible for Wilderness
⌋ Division	● Helispot	Completed Line	Fire History 2015 & 2016	Improved Road	Non-Designated Trail (closed)	Seminole Tribe of Florida
⚡ Aerial Hazard	Ⓟ Pump	M - Mastication Line	Fire Polygon	Florida Trail	BICY Preserve	TFR

Scale: 0 to 1 Miles
 NAD83 UTM 17

1	2	3	4	5
6	7	8	9	10





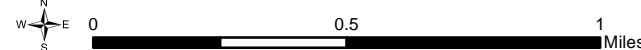
Cowbell Fire
FL-BCP-017033

Operations Map
April 15, 2017
0800



17,594 acres
Approximate Perimeter
as of 4/14/2017 @ 1600 hrs.

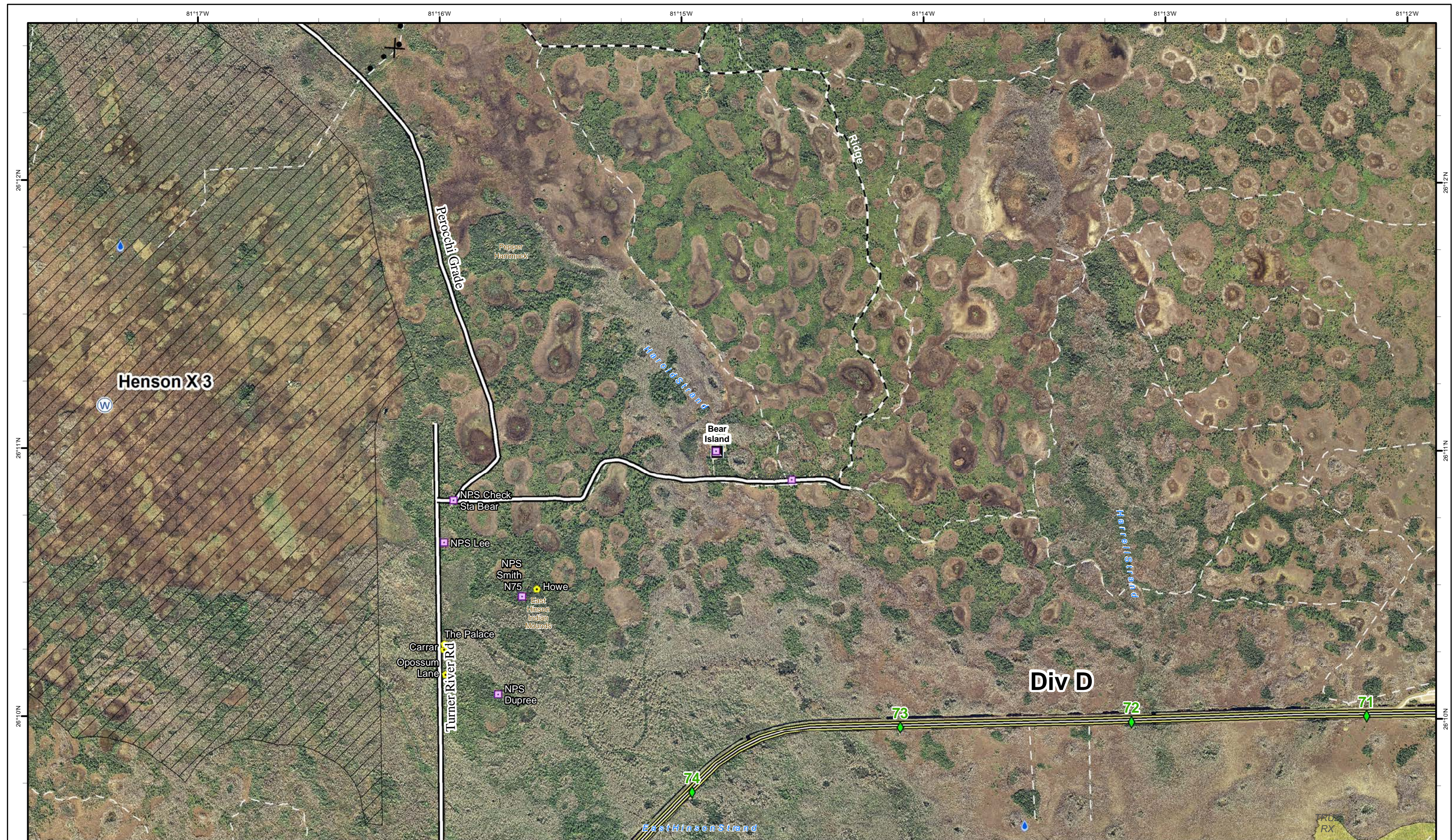
- | | | | | | |
|-------------------------|----------------|--------------------------|-----------------|---------------------------------|---------------------------|
| ① Rally Point | Ⓡ Repeater | Fire History 2015 & 2016 | 💧 Hydro Station | 🌉 Bridge Location | 📏 Eligible for Wilderness |
|) Division | Ⓜ Water Source | | 📍 Mile Marker | 🛣 Improved Road | 🟩 BICY Preserve |
| 📍 Incident Command Post | | | | ⋯ Non-Designated Trail (closed) | 🚚 TFR |
| | | | | 🚶 Florida Trail | |



NAD83 UTM 17

1	2	3	4	5
6	7	8	9	10





Cowbell Fire
FL-BCP-017033

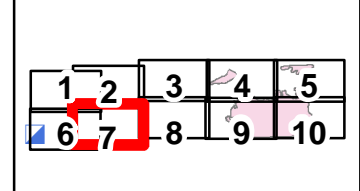
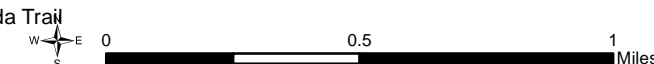
Operations Map
April 15, 2017
0800

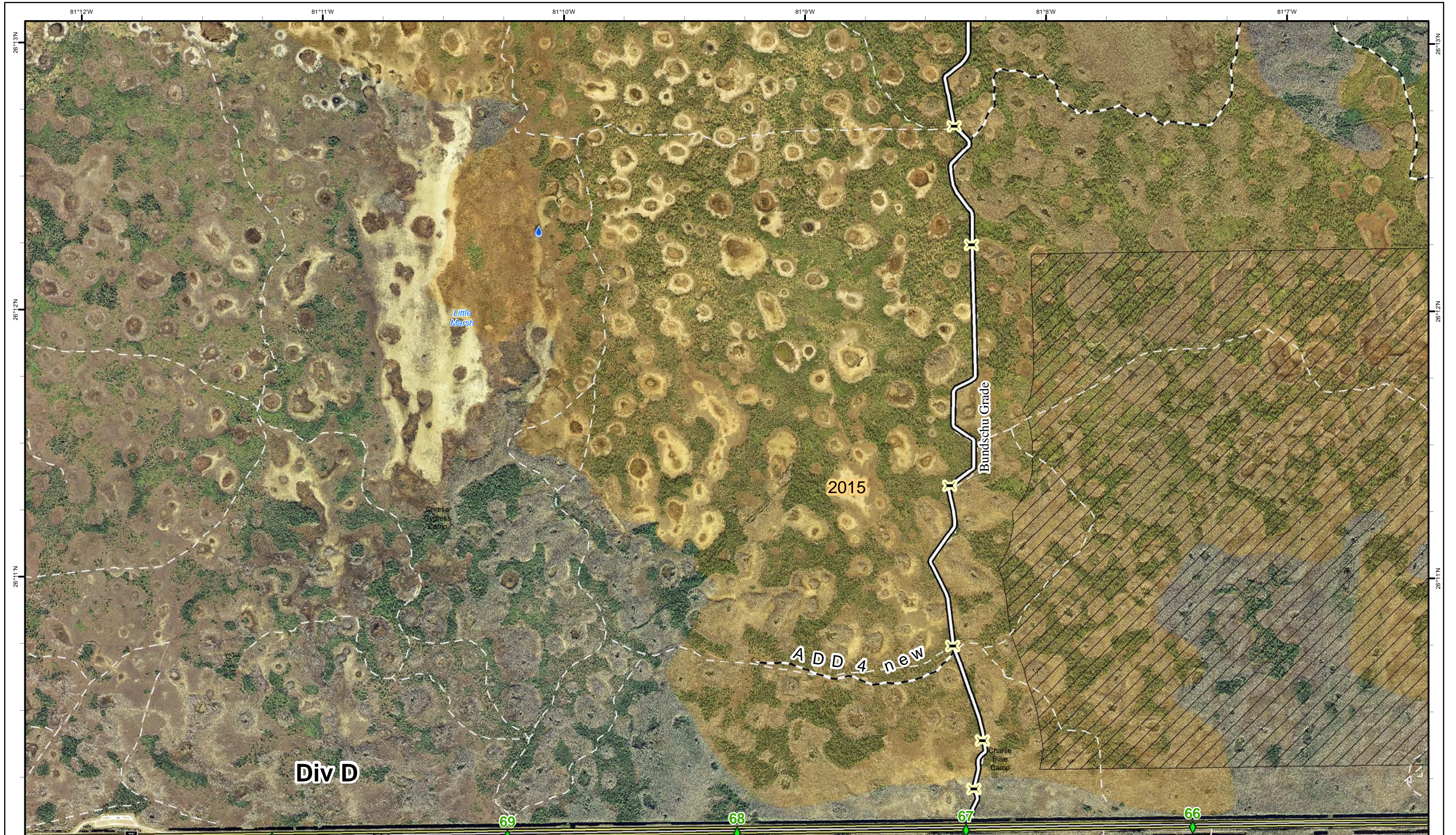


17,594 acres
Approximate Perimeter
as of 4/14/2017 @ 1600 hrs.

Legend

- ① Rally Point
- ⊗ Proposed Dozer Line
- ▭ Historic Fire Perimeter
- ▭ Fire History 2015 & 2016
- 💧 Hydro Station
- ◆ Mile Marker
- 🚧 Bridge Location
- 🛣 Improved Road
- ⋯ Non-Designated Trail (closed)
- 🚶 Florida Trail
- ▭ Eligible for Wilderness
- ▭ BICY Preserve
- 🏠 TFR





Cowbell Fire
FL-BCP-017033

Operations Map
April 15, 2017
0800



17,594 acres
Approximate Perimeter
as of 4/14/2017 @ 1600 hrs.

Legend

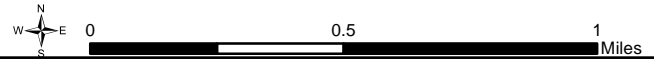
- ① Rally Point
- () Division
- Fire History 2015 & 2016

- Hydro Station
- Mile Marker
- ORV Canal Crossing

- Bridge Location
- Improved Road

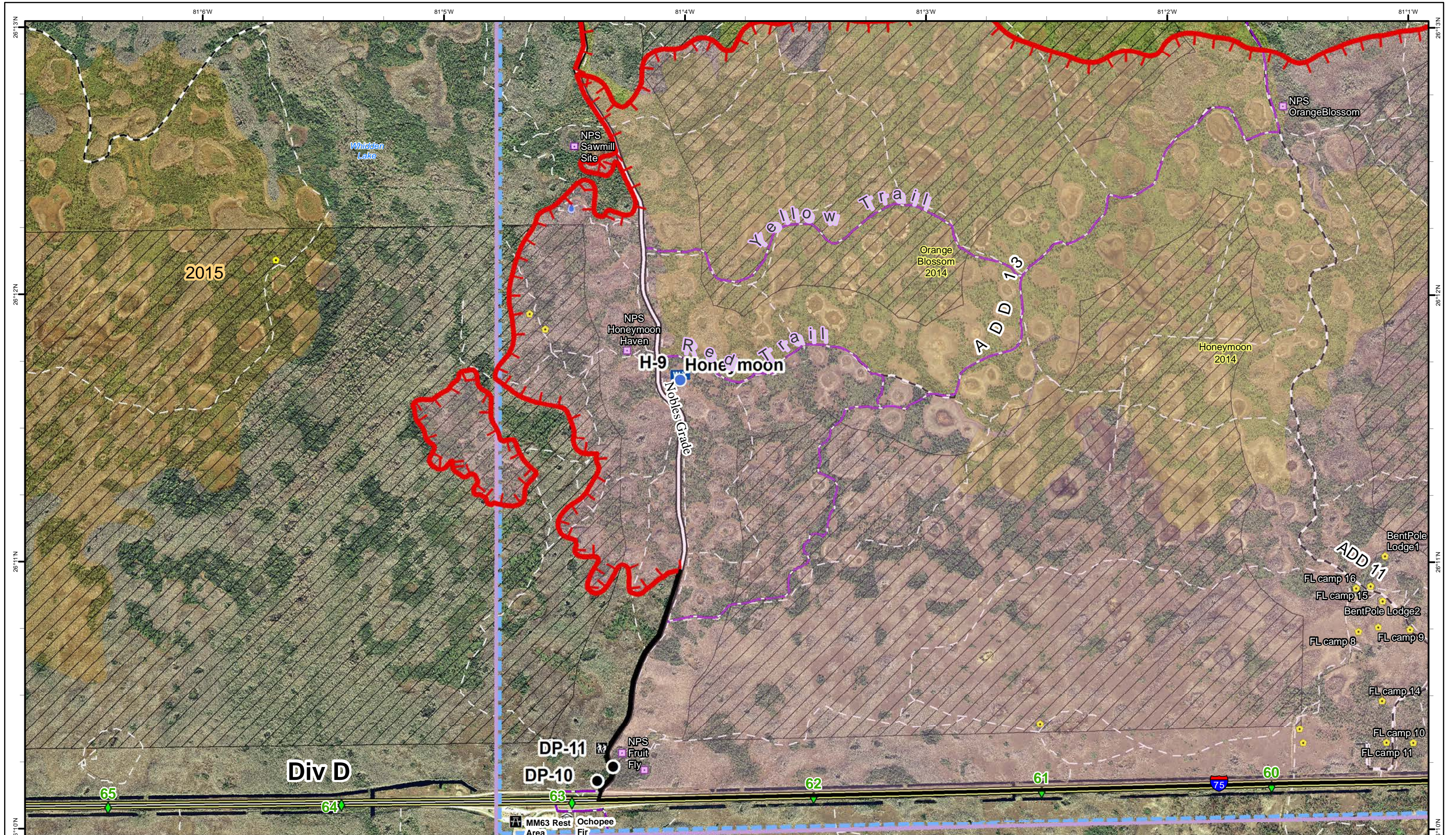
- Primary Buggy Trail
- Non-Designated Trail (closed)
- Florida Trail

- Eligible for Wilderness
- BICY Preserve
- TFR



1	2	3	4	5
6	7	8	9	10





Cowbell Fire
FL-BCP-017033

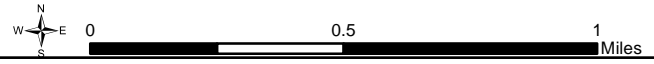
Operations Map
 April 15, 2017
 0800



17,594 acres
 Approximate Perimeter
 as of 4/14/2017 @ 1600 hrs.

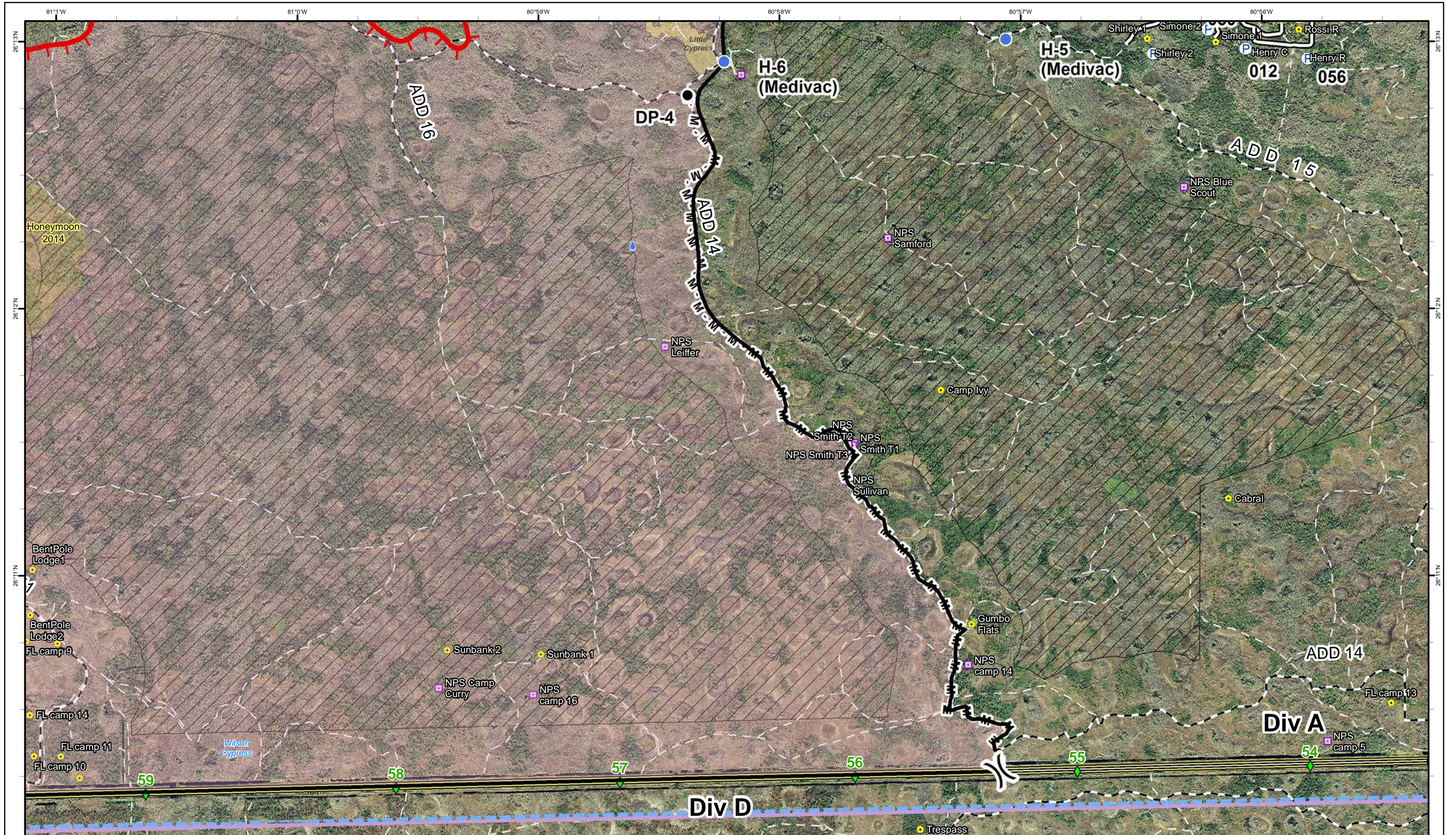
Legend

- ① Rally Point
- ⌋ Division
- Drop Point
- Helispot
- WX Mobile Weather Unit
- Uncontrolled Fire Edge
- Completed Line
- Fire Polygon
- Fire History 2015 & 2016
- Hydro Station
- Mile Marker
- Bridge Location
- Improved Road
- Primary Buggy Trail
- Non-Designated Trail (closed)
- Florida Trail
- Eligible for Wilderness
- BICY Preserve
- TFR



1	2	3	4	5
6	7	8	9	10





Cowbell Fire
FL-BCP-017033

Operations Map
April 15, 2017
0800



17,594 acres
Approximate Perimeter
as of 4/14/2017 @ 1600 hrs.

Legend

- ① Rally Point
- Ⓟ Division
- Drop Point
- Helispot
- Ⓟ Pump
- Uncontrolled Fire Edge
- Completed Line
- M - Mastication Line
- Fire Polygon
- Historic Fire Perimeter
- Fire History 2015 & 2016
- Hydro Station
- ◆ Mile Marker
- Bridge Location
- Improved Road
- Primary Buggy Trail
- Non-Designated Trail (closed)
- Florida Trail
- Eligible for W
- BICY Present
- TFR

