

Cowbell Fire

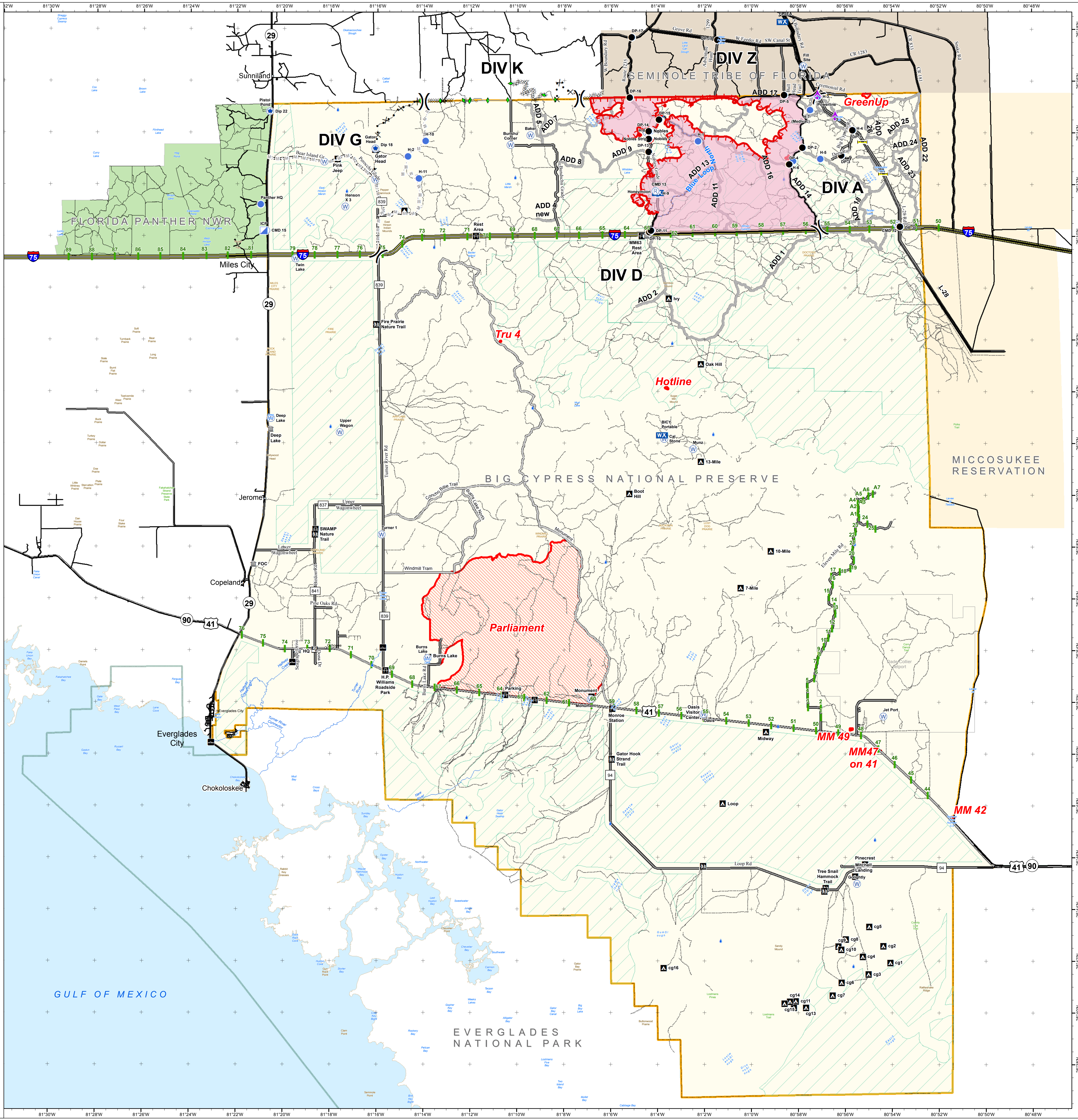
FL-BCP-017033

Initial Attack Map
April 19, 2017
0800

21,815 acres
Approximate Perimeter
as of 4/19/2017 @ 0800 hrs.



- () Division Break
- ⚡ Aerial Hazard
- ⊕ Dip Site
- Drop Point
- Helispot
- Ⓜ Incident Command Post
- WX Mobile Weather Unit
- Ⓜ Repeater
- Ⓜ Water Source
- Uncontrolled Fire Edge
- Completed Line
- Completed PLOW Line
- R · R · R Road as Completed Line
- Completed Dozer Line
- M · M · M Proposed Mastication Line
- Proposed Dozer Line
- Fire Perimeter
- Other 2017 Wildfires
- City
- Ⓜ Campground
- Ⓜ Canoe Access
- Ⓜ Office
- Ⓜ Pump-out Station
- Ⓜ Park/Rest Area
- Ⓜ Trailhead
- Ⓜ Hydro Station
- Ⓜ Bridge Location
- Primary Buggy Trail
- Eligible for Wilderness
- Miccosukee Reservation
- Seminole Tribe of Florida
- Big Cypress National Preserve
- Florida Panther NWR
- Everglades National Park



NAD83 UTM 17

