

# Cowbell Fire

FL-BCP-017033

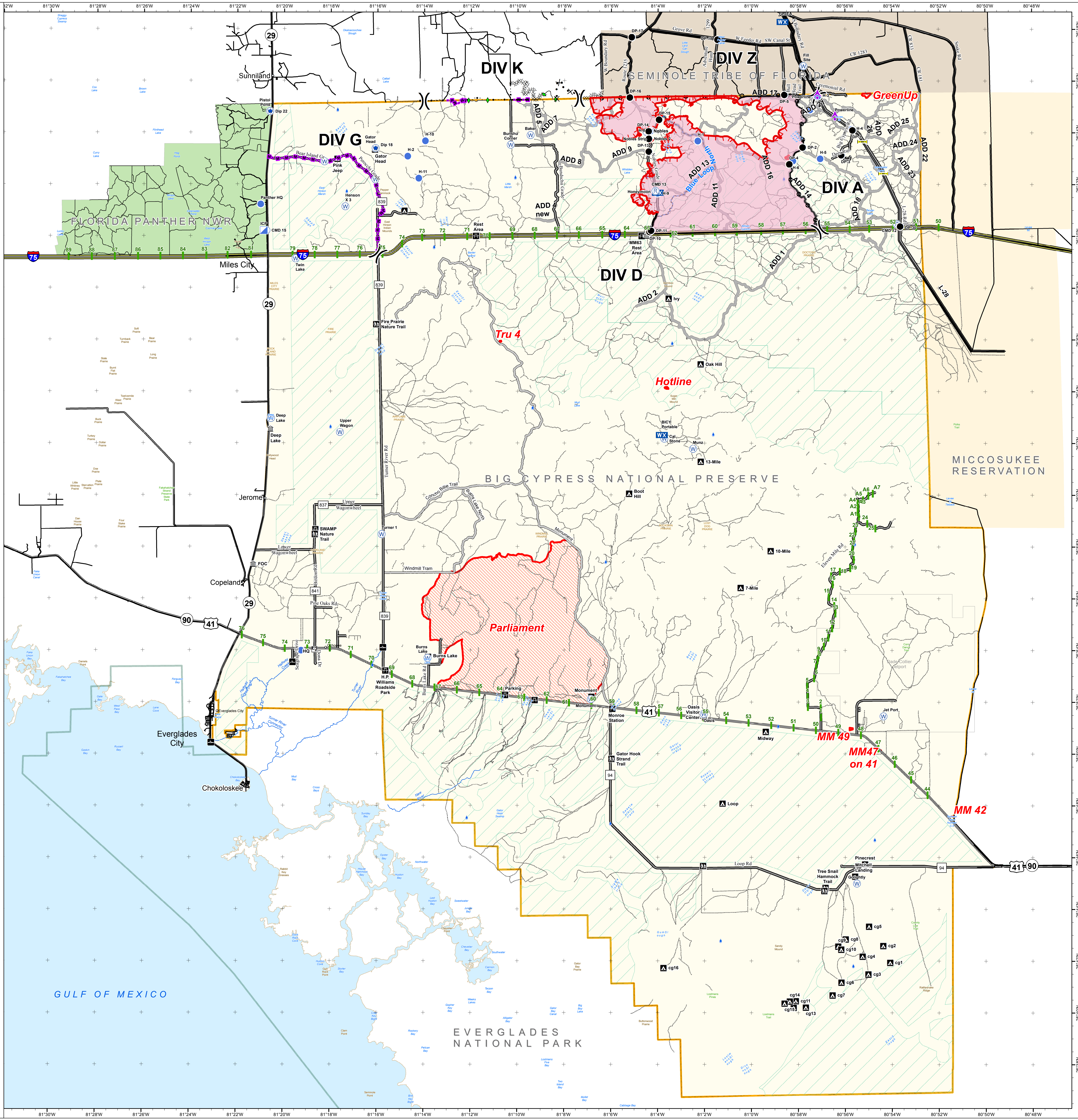
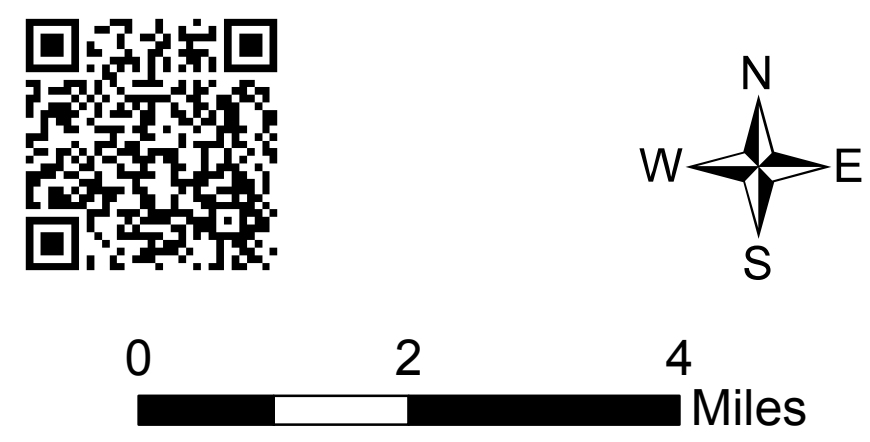
Initial Attack Map  
April 20, 2017  
0800

21,815 acres  
Approximate Perimeter  
as of 4/19/2017 @ 0800 hrs.



- ( ) Division Break
- ⚡ Aerial Hazard
- ⊕ Dip Site
- Drop Point
- Helispot
- Ⓜ Incident Command Post
- WX Mobile Weather Unit
- Ⓜ Repeater
- Ⓜ Water Source
- Uncontrolled Fire Edge
- Completed Line
- Completed Plow Line
- Completed Dozer Line
- Proposed Mastication Line
- Proposed Dozer Line
- Planned Fire Line
- Highlighted Manmade Feature
- Other
- Fire Perimeter
- Other 2017 Wildfires
- City
- ▲ Campground
- Ⓜ Canoe Access
- Ⓜ Office
- Ⓜ Pump-out Station
- Ⓜ Park/Rest Area
- Ⓜ Trailhead
- Hydro Station
- Ⓜ Bridge Location
- Primary Buggy Trail
- Eligible for Wilderness
- Miccosukee Reservation
- Seminole Tribe of Florida
- Big Cypress National Preserve
- Florida Panther NWR
- Everglades National Park

NAD83 UTM 17



81°30'W 81°28'W 81°26'W 81°24'W 81°22'W 81°20'W 81°18'W 81°16'W 81°14'W 81°12'W 81°10'W 81°8'W 81°6'W 81°4'W 81°2'W 81°0'W 80°58'W 80°56'W 80°54'W 80°52'W 80°50'W 80°48'W