

Cowbell Fire

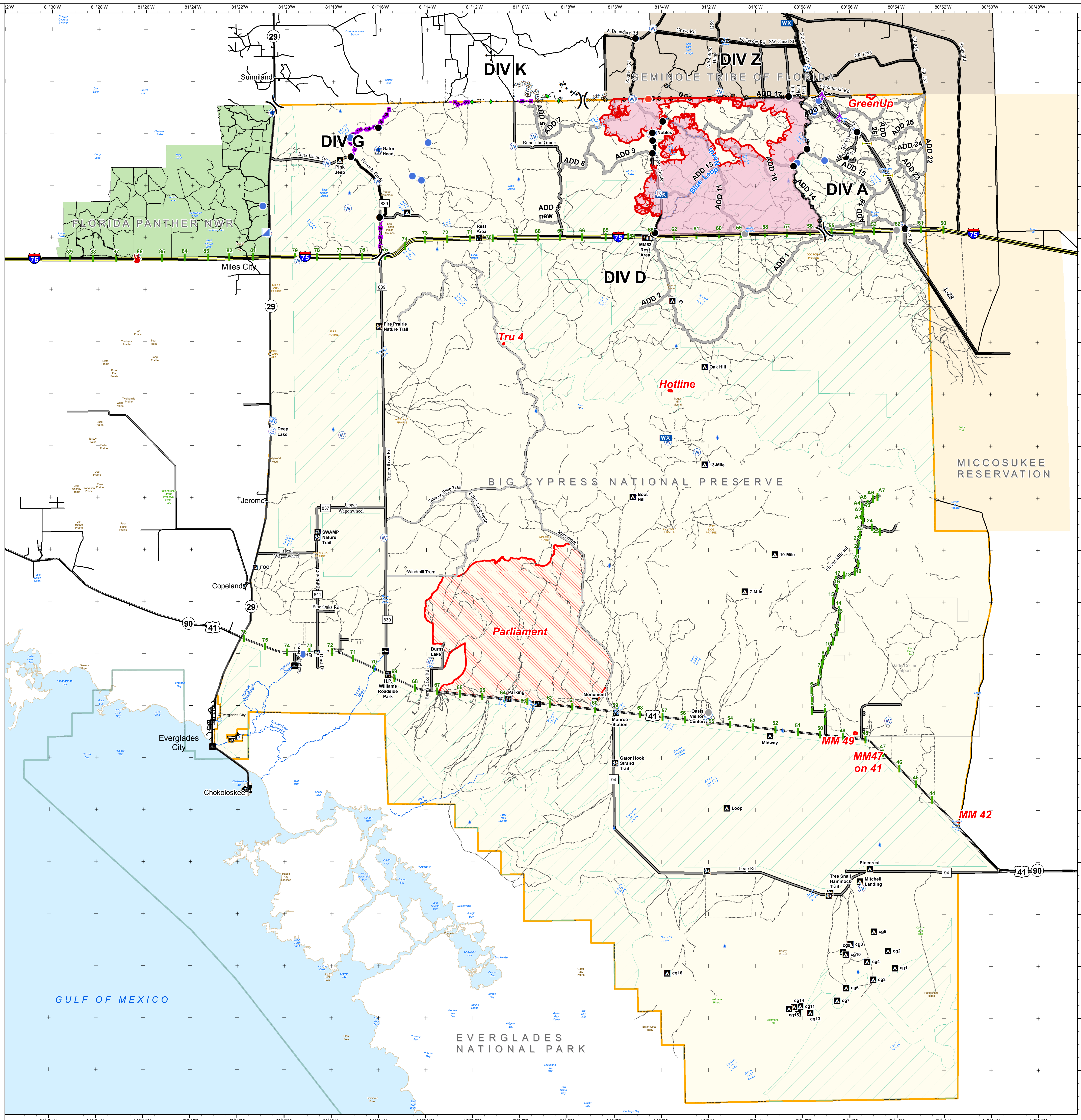
FL-BCP-017033

Initial Attack Map
April 22, 2017
0800

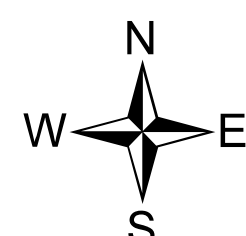
21,620 acres
Approximate Perimeter
as of 4/21/2017 @ 2054 hrs.



- Aerial Hazard
- Dip Site
- Drop Point
- Fire Location
- Gate
- Helibase
- Helispot
- Hot Spot
- Incident Command Post
- Mobile Weather Unit
- Repeater
- Staging Area
- Water Source
- Unknown
- Other
- Division Break
- Uncontrolled Fire Edge
- Completed Line
- Completed Plow Line
- Completed Dozer Line
- Proposed Mastication Line
- Proposed Dozer Line
- Planned Fire Line
- Aerial Retardant Drop
- Highlighted Manmade Feature
- Other
- Fire Perimeter
- Other 2017 Wildfires
- City
- Campground
- Canoe Access
- Office
- Pump-out Station
- Park/Rest Area
- Trailhead
- Hydro Station
- Bridge Location
- Primary Buggy Trail
- Eligible for Wilderness
- Miccosukee Reservation
- Seminole Tribe of Florida
- Big Cypress National Preserve
- Florida Panther NWR
- Everglades National Park



NAD83 UTM 17



0 2 4 Miles