

Cowbell Fire

FL-BCP-017033

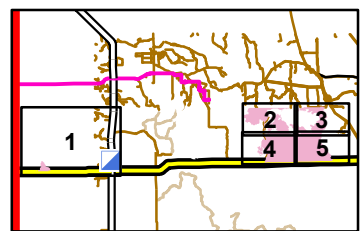
Operations Map

April 29-30, 2017
0800 hrs

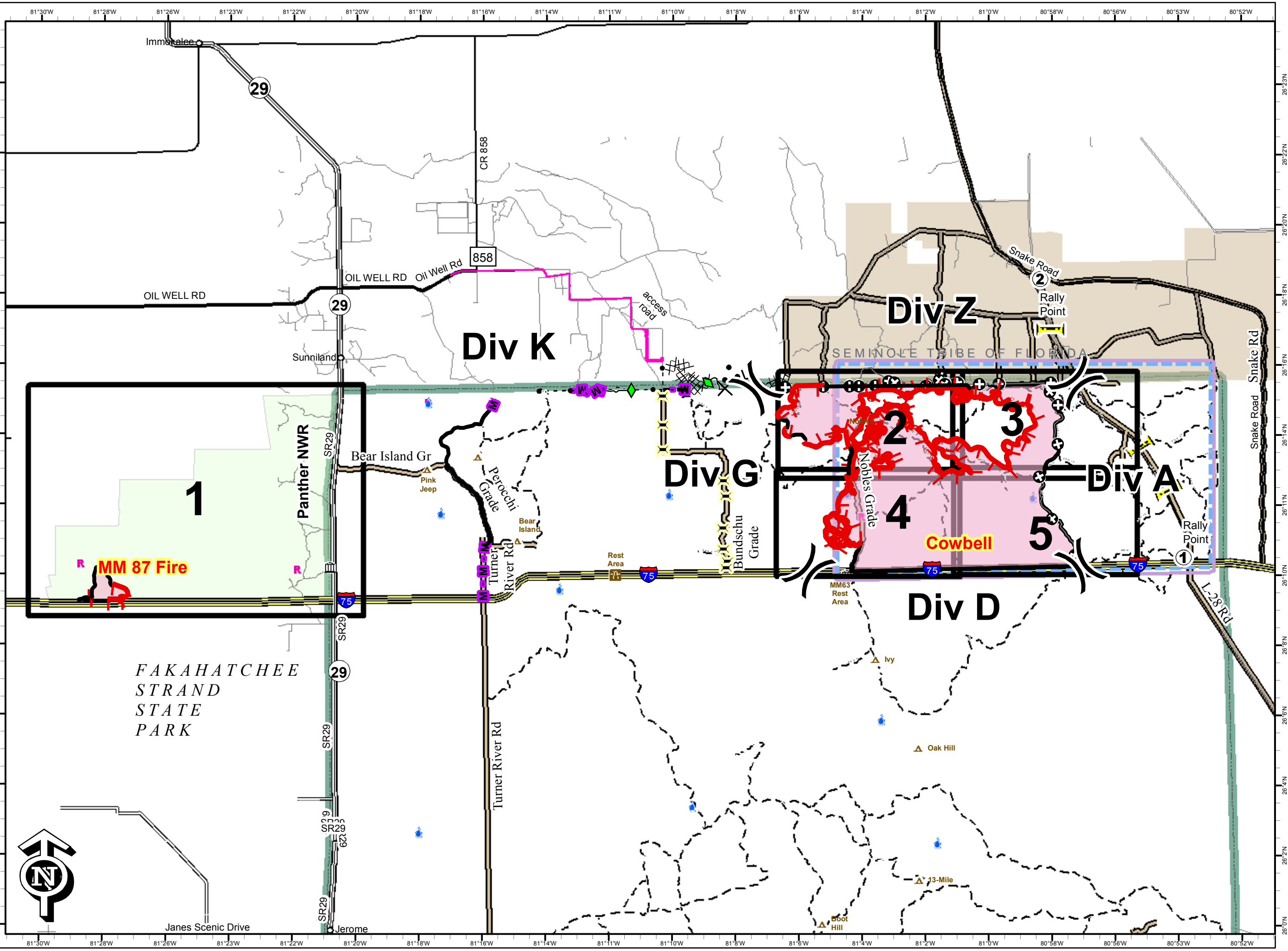
21,840 acres
Approximate Perimeter
as of 4/25/2017 @ 2054 hrs.



- Uncontrolled Fire Edge
- Completed Line
- Completed Plow Line
- Completed Dozer Line
- Proposed Mastication Line
- Proposed Dozer Line
- Planned Fire Line
- Highlighted Manmade Feature
- Other
- Wildfire Daily Fire Perimeter
- Rally Point
- Access Road
- Hydro Station
- RAWS Station
- ORV Canal Crossing
- Improved Road
- Primary ORV Trail
- Seminole Tribe of Florida
- BICY Preserve



0 2 4 Miles
NAD83 UTM 17



Janes Scenic Drive

Jerome