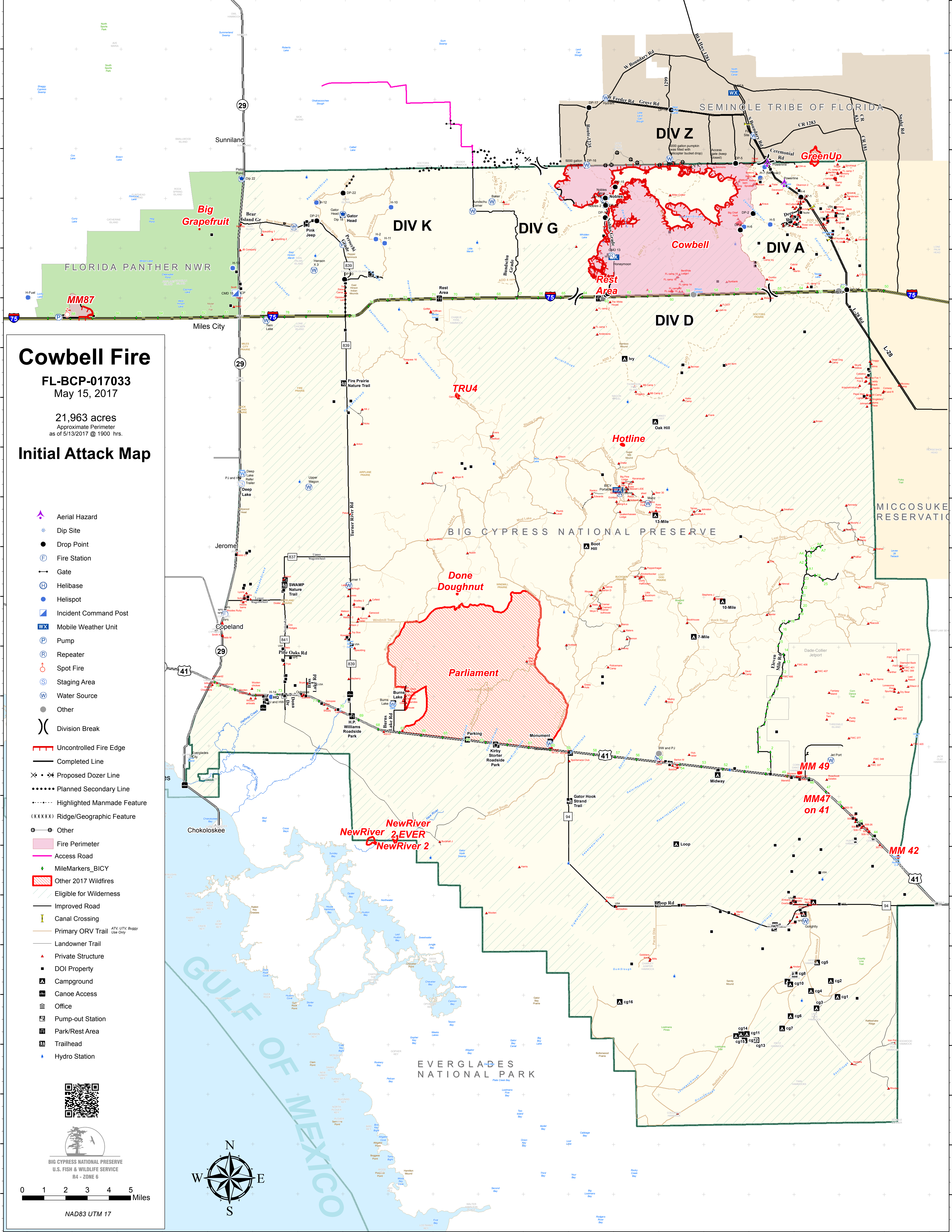


81°30'W 81°28'W 81°26'W 81°24'W 81°22'W 81°20'W 81°18'W 81°16'W 81°14'W 81°12'W 81°10'W 81°8'W 81°6'W 81°4'W 81°2'W 81°0'W 80°58'W 80°56'W 80°54'W 80°52'W 80°50'W

26°20'N 26°18'N 26°16'N 26°14'N 26°12'N 26°10'N 26°08'N 26°06'N 26°04'N 26°02'N 26°00'N 25°58'N 25°56'N 25°54'N 25°52'N 25°50'N 25°48'N 25°46'N 25°44'N 25°42'N 25°40'N 25°38'N 25°36'N 25°34'N 25°32'N 25°30'N 25°28'N 25°26'N 25°24'N 25°22'N 25°20'N 25°18'N 25°16'N 25°14'N 25°12'N 25°10'N 25°08'N 25°06'N 25°04'N 25°02'N 25°00'N



Cowbell Fire

FL-BCP-017033
May 15, 2017

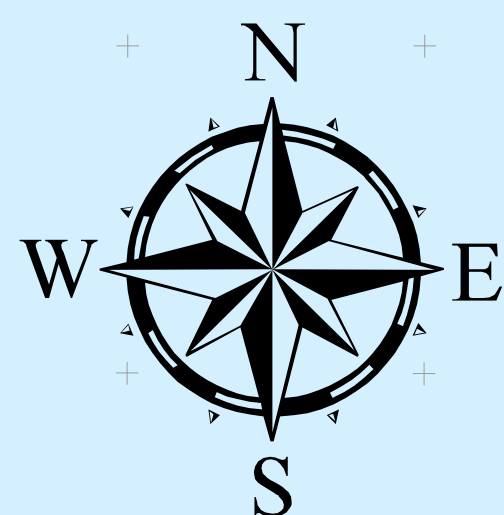
21,963 acres
Approximate Perimeter
as of 5/13/2017 @ 1900 hrs.

Initial Attack Map

- Aerial Hazard
- Dip Site
- Drop Point
- Fire Station
- Gate
- Helibase
- Helispot
- Incident Command Post
- Mobile Weather Unit
- Pump
- Repeater
- Spot Fire
- Staging Area
- Water Source
- Other
- Division Break
- Uncontrolled Fire Edge
- Completed Line
- Proposed Dozer Line
- Planned Secondary Line
- Highlighted Manmade Feature
- Ridge/Geographic Feature
- Other
- Fire Perimeter
- Access Road
- MileMarkers_BICY
- Other 2017 Wildfires
- Eligible for Wilderness
- Improved Road
- Canal Crossing
- Primary ORV Trail
- Landowner Trail
- Private Structure
- DOI Property
- Campground
- Canoe Access
- Office
- Pump-out Station
- Park/Rest Area
- Trailhead
- Hydro Station



BIG CYPRESS NATIONAL PRESERVE
U.S. FISH & WILDLIFE SERVICE
R4 - ZONE 6



0 1 2 3 4 5 Miles

NAD83 UTM 17