
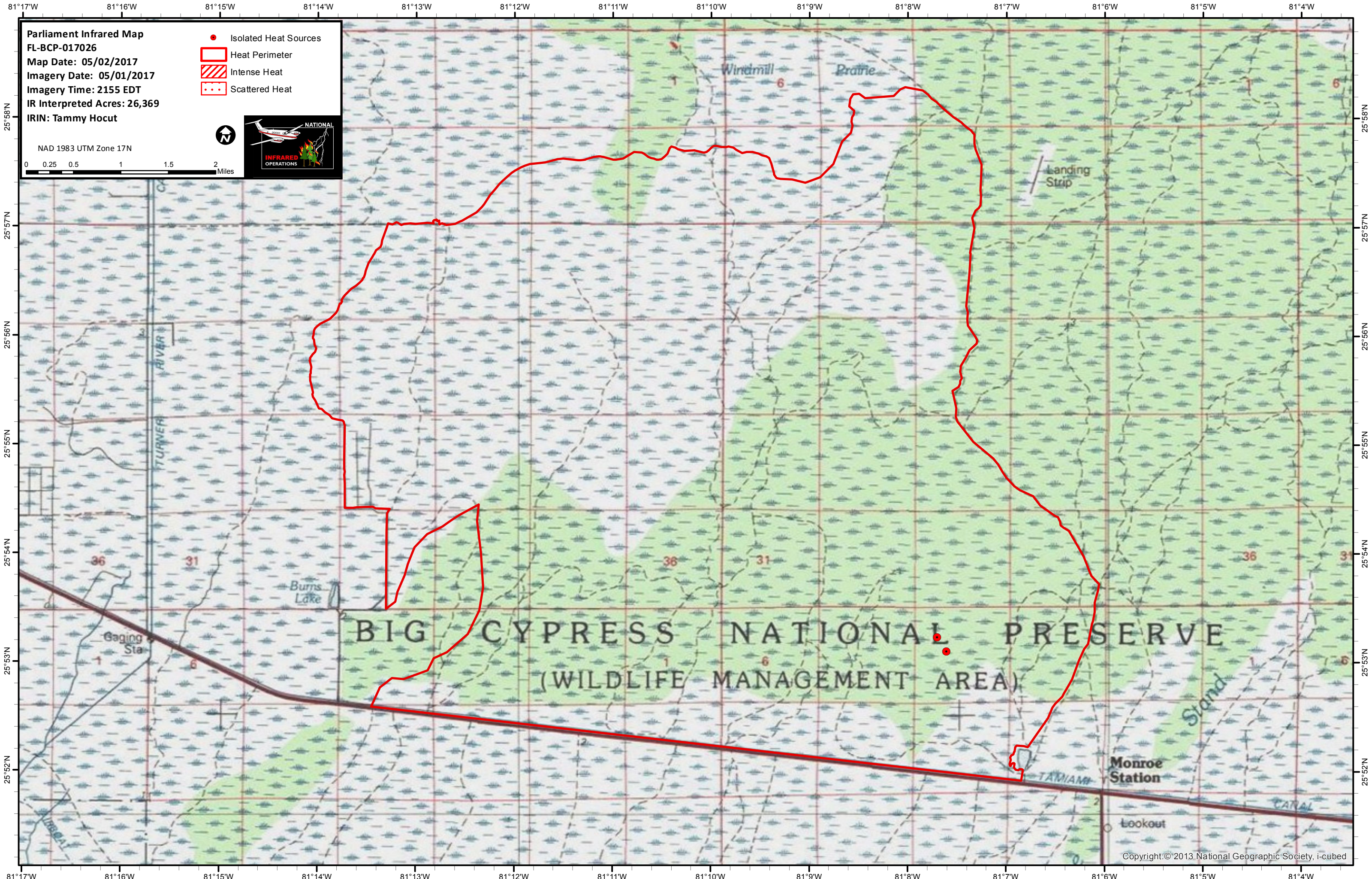


**Parliament Infrared Map**  
**FL-BCP-017026**  
**Map Date: 05/02/2017**  
**Imagery Date: 05/01/2017**  
**Imagery Time: 2155 EDT**  
**IR Interpreted Acres: 26,369**  
**IRIN: Tammy Hocut**

- Isolated Heat Sources
- Heat Perimeter
- Intense Heat
- Scattered Heat

NAD 1983 UTM Zone 17N

0 0.25 0.5 1 1.5 2 Miles

**BIG CYPRESS NATIONAL PRESERVE**  
 (WILDLIFE MANAGEMENT AREA)