

# Incident Action Plan

Day Operational Period  
Sunday/Monday  
5/20-21/18  
0800-2000



MAPS

Avian Complex  
FL-BCP-018031  
PPLQ4618 (1502)  
FFF2000000LQ460 Fund 18x



IAP

INCIDENT OBJECTIVES	1. Incident Name <b>Avian Complex</b>	2. Date Prepared <b>5/19/2018</b>	3. Time Prepared <b>1700</b>
4. Operational Period <b>5/20-21/2018 0800 - 2000</b>			
5. General Control Objectives For The Incident <u>Objectives for the Incident:</u> <ul style="list-style-type: none"> <li>• Ensure protection of human life as a top priority, followed by protecting communities and specifically identified facilities within the preserve.</li> <li>• Manage the fire under a strategy commensurate with risk and suppression action utilizing MIST, paying particular attention to Red-Cockaded Woodpecker habitat and Florida Panther den sites.</li> <li>• Provide protection to all private in-holding camps, commercial infrastructure, and limit disruption of landowner access.</li> <li>• Provide initial attack response for all new starts within the Big Cypress National Preserve and Florida Panther National Wildlife Refuge through coordination with the Preserve's Duty Officer.</li> <li>• Provide training opportunities for Preserve, state and federal personnel to strengthen organizational capabilities and complete training assignments.</li> </ul>			
<u>Control Objectives:</u> <ul style="list-style-type: none"> <li>• Provide for point source protection of private land and critical infrastructure in areas that are or will be threatened by the predicted movement of the fires within the Avian Complex.</li> <li>• Limit the Flamingo fire from spreading north of the preserve boundary.</li> <li>• Limit impacts to I-75, US41, Seminole Tribe of Florida and Miccosukee tribal lands.</li> <li>• When possible, use fire management practices that replicate natural fire to the greatest extent.</li> <li>• Coordinate with Everglades National Park on all actions needed with monitoring Curlew Fire.</li> </ul>			
6. <u>Weather forecast for Period:</u>  Deep tropical moisture across southern Florida will bring widespread rainfall and isolated, afternoon thunderstorms to the area on Sunday. Good chance for at least scattered showers and afternoon thunderstorms continue on Monday and Tuesday. The primary hazards from these storms will be frequent lightning and heavy rainfall. Rainfall totals between 0.5 to 1.5 inches are forecast for Sunday, with between 0.25 to 0.75 inches on Monday. Lighter amounts are forecast for Tuesday, but heavy, localized showers are possible.			
7. <u>General Safety Message:</u>  Look up, look down, look all around for hazards, recognize them and mitigate them.			
8. ATTACHMENTS (X IF ATTACHED) <input checked="" type="checkbox"/> Organization List - ICS 203 <input checked="" type="checkbox"/> Medical Plan - ICS 206                      [ ] _____ <input checked="" type="checkbox"/> Division Assignment Lists - ICS 204 <input checked="" type="checkbox"/> Incident Maps                      [ ] _____ <input checked="" type="checkbox"/> Communications Plan - ICS 205 <input checked="" type="checkbox"/> Traffic Plan                      [ ] _____			
9. Prepared By (Planning Section Chief)  <b>/s/ Carol O'Bryan</b>		10. Approved By (Incident Commander)  <b>/s/ Greg Suszek (t)</b>	

ORGANIZATION ASSIGNMENT LIST				9.	Operations Section			
1. Incident Name				Lead Operations		Bruce Malloy	5/22	O-169
<b>AVIAN COMPLEX Type 3 Team</b>								
2. Date		3. Time						
05/19/18		1700						
4. Operational Periods				<b>a.</b>		<b>Divisions/Groups</b>		
05/20/18 – 05/21/18 DAY (0800 – 2000)				Flamingo	A	Jason Klawinsky	5/24	O-216
<b>5. Incident Commander and Staff</b>				Flamingo	B	Paul Roose	5/24	O-158
Incident Commander	Matt Martens	5/25	O-244	Buzzard	E	Sammy Mcfarland	5/21	O-24
	Greg Suszek (t)	5/23	O-253	Buzzard	N	Kendall Carpenter	5/21	O-48
Safety Officer	Opie Blackwell	5/26	O-192	Buzzard	Z	Paul Ryan	6/1	O-272
	Eric Bader	5/24	O-227			Jason Lago	5/21	O-194
Information Officer	Punky Moore	5/24	O-222		Caracara/Curlew/ Vulture	Unstaffed		
	Tom Simpson	6/1	O-274					
<b>6. Agency Reps</b>				<b>b.</b>		<b>Air Operations Branch</b>		
Agency Administrator		Tammy Whittington (Big Cypress)		Air Operation Branch Director		Pete Kubiak	6/2	O-284
Agency Administrator		Laura Perdices (Deputy)		Air Support Group Supervisor				
Chief of Fire & Aviation		Jordan McKnight (Big Cypress)		Air Tactical Group Supervisor				
AFMO		Orlando Genao (BICY/Panther)						
Zone FMO		Cass Palmer (Panther)						
BICY Duty Officer		Matt Lingenfelter						
Collier Co. Sheriff		Lt. Jake Walker						
Dade Co. Sheriff		Mike Preston						
Collier Co. FD		Nolan Sapp						
Florida Forest Service		Mike Weston						
<b>7. Planning Section</b>				Helibase Manager		Matt Lingenfelter	5/30	O-279
Chief	Carol O'Byran	5/24	O-280					
Resources Unit	Melonie Sellers	5/24	O-281					
Situation Unit								
FBAN								
IMET				<b>8. Logistics Section</b>				
Demob Unit				Chief		Susan Cornett	6/2	O-184
Status Check-In				Supply Unit		Susan Cornett	6/2	O-184
ITSS	David Koehler	5/30	O-271	Facilities Unit		Gene-Paul Matson	5/24	O-285
READ				Ground Support		Mike Nelson	5/24	O-242
GISS	Stephen Penny	6/1	O-270	Equipment Manager		Ron Brewer	5/21	O-178
GISS				Ordering Manager		Tom Hitt	5/24	O-238
<b>10. Finance Section</b>				Base Camp Manager		Christopher Bolen	6/1	O-268
Chief	Laura Wilson	6/5	O-282	Communications Unit		Steve Helton	5/31	O-273
Chief (t)	Terri McDonald (t)	5/31	O-277	Medical Unit Leader		Bryan Gieryk	5/29	O-183
Cost Unit	Tom Steele	5/24	O-283	Security Manager		Burke Benton	5/29	O-220
Comp/Claims						Gene-Paul Matson	5/24	O-285
Procurement						Sasha Herrin	local	O-286
Personnel Time Recorder								
Prepared by (RESL) /s/ Melonie Sellers								



# Fire Weather Forecast

FORECAST NO: 17 NAME OF FIRE: Avian Complex Fires  
 PREDICTION FOR: Sunday Day Shift UNIT: Big Cypress National Preserve  
 SHIFT DATE: May 20, 2018 Incident Meteorologist: *John Pendergrast / Robert Rickey*  
 FORECAST ISSUED: 1900 May 19, 2018 240-499-6649 623-703-7323

**DISCUSSION:** Deep tropical moisture across southern Florida will bring widespread rainfall and isolated, afternoon thunderstorms to the area on Sunday. Good chance for at least scattered showers and afternoon thunderstorms continue on Monday and Tuesday. The primary hazards from these storms will be frequent lightning and heavy rainfall. Rainfall totals between 0.5 to 1.5 inches are forecast for Sunday, with between 0.25 to 0.75 inches on Monday. Lighter amounts are forecast for Tuesday, but heavy, localized showers are possible.

## SUNDAY DAY SHIFT:

**WEATHER:** Cloudy with widespread showers and isolated, afternoon thunderstorms.  
**WIND (20 FT):** Southeast 7 to 11 mph with afternoon gusts to 20 mph. Expect erratic winds and stronger gusts near storms.  
**MAX TEMPERATURES:** 77 to 81F  
**MIN RH:** 74%  
**LAL:** 2 Chance measurable rain: 80%  
**DISPERSION:** 40 MAX **MIXING HEIGHT:** 3500 **TRANSPORT WINDS:** Southeast at 15 mph

## TONIGHT (SUNDAY NIGHT):

**WEATHER:** Cloudy with patchy fog and a chance of showers.  
**WIND (20 FT):** Variable 3 to 6 mph.  
**MIN TEMPERATURES:** 69 to 73F  
**MAX RH:** 95 to 100% LVORI 10 (max)  
**LAL:** 1 Chance measurable rain: 60% in the evening, becoming 30% after midnight.

## MONDAY:

**WEATHER:** Mostly cloudy with showers likely and scattered, afternoon thunderstorms.  
**WIND (20 FT):** Southeast 7 to 11 mph with afternoon gusts to 20 mph. Expect erratic winds and stronger gusts near storms.  
**MAX TEMPERATURES:** 78 to 82F  
**MIN RH:** 72%  
**LAL:** 3 Chance measurable rain: 60%  
**DISPERSION:** 40 MAX **MIXING HEIGHT:** 3500 **TRANSPORT WINDS:** Southeast 13 mph

## TUESDAY:

**WEATHER:** Partly cloudy, becoming mostly cloudy with scattered showers and isolated, afternoon thunderstorms.  
**WIND (20 FT):** Southeast 7 to 11 mph with afternoon gusts to 20 mph. Expect erratic winds and stronger gusts near storms.  
**MAX TEMPERATURES:** 83 to 87F  
**MIN RH:** 60%  
**LAL:** 2 Chance measurable rain: 50%  
**DISPERSION:** 45 MAX **MIXING HEIGHT:** 4000 **TRANSPORT WINDS:** Southeast 13 mph

**GENERAL OUTLOOK WEDNESDAY THROUGH FRIDAY:** Scattered showers with afternoon thunderstorms are forecast each day. Minimum humidity will be above 55%, with high temperatures in the mid to upper 80s. A southeast wind is forecast for Wednesday, shifting to the east on Thursday and Friday. Sustained wind speeds at or below 10 mph.



Current Incident area  
 RAWs conditions

Sunrise Sunday: 6:37 am EDT  
 Sunset Sunday: 20:08 pm EDT

Source: US Naval Observatory

## FIRE BEHAVIOR FORECAST

<b>FORECAST NUMBER: #16</b>	<b>TYPE OF FIRE: Wildland</b>
<b>FIRE NAME: Avian Complex</b>	<b>OPERATIONAL PERIOD: 05-20-18 thru 5-22-18</b>
<b>DATE ISSUED: 05-19-18</b>	<b>TIME ISSUED: 1930</b>
<b>UNIT: Big Cypress Preserve</b>	<b>WRITTEN: David Quisenberry, Fire Behavior Analyst (T) Signed: <i>David Quisenberry</i></b>

### FUEL ASSUMPTIONS:

3 Fuel Models Involved: Fuel Model 7 (Southern Rough), GR6 (grass model) TU3 (pine w/grass and shrub). Fuel moistures will likely remain too high for significant fire growth depending on morning drying time.

### The fuel moisture for this period is:

1 hr 11-14%      10 hr 11-14%      100 hr 19-22%      Current KBDI – 464

### Weather for Friday and Saturday Day Shift:

See Fire Weather Forecast on previous page

**General Fire Behavior Forecast:** Minimal fire activity expected over the next few days in those areas where fuels are wet from the last several days of precipitation. Fire spread and growth are not expected. But in areas where localized drying of a day or more occur creeping movement of the fire is possible with ROS and FL described below possible. Smoldering in logs or stump holes is also possible.

### Specific:

**Buzzard:** Overall minimal fire activity expected as fuels are wet. Smoldering possible. **The area of heat on the Divisions J and E break could become active if fuels have time to dry in the morning. IR flight showed some heats.**

**Flamingo:** Minimal fire activity expected as fuels are wet. Smoldering possible.

**Curlew:** Minimal fire activity expected as fuels are wet. No heat detected on IR flight. Smoldering possible.

**Initial Attack:** Lightning will accompany storms over the Preserve. IA is not out of the question, but fire behavior is unlikely to cause control problems.

### **PREDICTIONS FOR MOST ACTIVE TIME OF PEAK BURNING PERIOD in drier fuels**

Fuel Model	Fire Behavior
Grass	ROS – 3 to 5 ch/hr. with flame lengths of 2 to 4 ft
Shrub (palmetto/southern rough)	ROS – 3 to 5 ch/hr. with flame lengths of 2 to 4 ft
Timber Litter w/grass	ROS – 3 to 5 ch/hr. with flame lengths of 2 to 4 ft
Spotting Distance	Spotting distance less than 100'
Probability of Ignition	Very low 10%.

**AIR OPERATIONS:** Thunderstorms will once again be in the area and likely impact aviation operations.

**FIRE BEHAVIOR SAFETY:** Fire behavior is likely not a threat to your safety over the next 2 or 3 days. Lightning could be however. Storms can form rather quickly in South Florida and pose a lightning threat sooner (and from a greater distance) than you might expect. Don't chance it – take cover as storms approach.

## Division/Group Assignment List (ICS 204 WF)

<b>1. Incident Name:</b>			<b>3.</b>				
Avian Complex			Branch:  <b>Flamingo</b>		Division/Group  <b>A</b>		
<b>2. Operational Period:</b>							
Date/Time From: 5/20/2018 0800		Date/Time To: 5/21/2018 2000					
<b>4. Operations Personnel</b>							
BRANCH DIRECTOR					FIELD OPERATIONS		Bruce Malloy 5/22 O-169
DIVISION/GROUP SUPERVISOR		Jason Klawinsky 5/24 O-216		LEAD OPERATIONS			
				PLANNING OPERATIONS			
<b>5. Resources Assigned this Period</b>							
Strike Team / Task Force / Resource Designator			LWD	Leader	Number Persons	Drop Off PT./Time	Pick Up PT./Time
ENG T6	Wildland Services	E-12	5/25	David Hogrefe	4	0800	2000
EMPF		O-275	6/2	Spencer Garden	1	0800	2000
EMPF		O-218	5/20	Mike Worcester	1	0800	2000
SOF2		O-192	5/26	Opie Blackwell	1	0800	2000
SOF2		O-227	5/24	Eric Bader	1	0800	2000
<b>6. Control Operations/Work Assignments:</b>							
<b>Task:</b>							
<ul style="list-style-type: none"> <li>• Utilizing MIST, mop up visible smoke within 25' of established trails</li> <li>• Flush cut felled tree stumps and obscure them, disperse all debris from cutting operation</li> <li>• Remove all firefighting equipment and trash from camps and backcountry, with special attention to the camps. .</li> </ul>							
<b>Purpose:</b>							
<ul style="list-style-type: none"> <li>• Minimize negative impacts to infrastructure and private property and identify containment opportunities that are both efficient and have a high probability of success.</li> <li>• Retrieve/return all accountable property and leave the preserve and camps with minimum lasting impact..</li> </ul>							
<b>End State:</b>							
<ul style="list-style-type: none"> <li>• Fire contained on defensible lines with minimal to no impact on local communities.</li> <li>• Minimal visual evidence of the suppression actions taken on this fire.</li> </ul>							
<b>7. Special Instructions:</b>							
<ul style="list-style-type: none"> <li>• Establish and maintain LCES during operational.</li> <li>• Document work done to protect cabins, or damage to cabins, by taking before and after pictures of the camp structures. Document lat/long and brief description of the actions taken on an ICS-213.</li> <li>• If medical hoist ship is needed , request through <b>"784"</b> (law dispatch) on BICY CMD channel</li> <li>• Assist Preserve with I.A. utilizing closest resources on the fire.</li> </ul>							
<b>8. Division/Group Communication Summary</b>							
Function	Channel	RX Freq N/W	RXTone/NAC	TX Freq N/W	TX Tone/NAC	Mode	
COMMAND	2	172.425N	1035	171.625N	1035	D	
TACTICAL	4	168.600N	0	168.600N	0	A	
AIR TO GROUND	10	168.3250N	0	168.3250N	0	A	
<b>9. Prepared By (Resource Unit Leader)</b>			<b>Approved By (Planning Section Chief)</b>			<b>Date</b>	<b>Time</b>
/s/Melanie Sellers			Carol O'Bryan			5/19/18	1700

## Division/Group Assignment List (ICS 204 WF)

<b>1. Incident Name:</b>				<b>3.</b>			
Avian Complex				Branch:	<b>B</b>		
<b>2. Operational Period:</b>				Flamingo			
Date/Time From: 5/20/2018 0800		Date/Time To: 5/21/2018 2000					
<b>4. Operations Personnel</b>							
BRANCH DIRECTOR				FIELD OPERATIONS		Bruce Malloy 5/22 O-169	
DIVISION/GROUP SUPERVISOR		Paul Roose O-158 5/24		LEAD OPERATIONS			
				PLANNING OPERATIONS			
<b>5. Resources Assigned this Period</b>							
Strike Team / Task Force / Resource Designator			LWD	Leader	Number Persons	Drop Off PT./Time	Pick Up PT./Time
ENG T6 Fire Trax E-13			5/25	Steve Bennett	3	0800	2000
BUGGY Transport E-100			Local	Captain Steve-Careless	1	0800	2000
UTV CC7 E-108			rental	TBD by DIVS	0	0800	2000
EMPF O-218			5/20	Mike Worcester	1	0800	2000
EMPF O-275			6/2	Spencer Garden	1	0800	2000
SOF2 O-192			5/26	Opie Blackwell	1	0800	2000
SOF2 O-227			5/24	Eric Bader	1	0800	2000
<b>6. Control Operations/Work Assignments:</b>							
<b>Task:</b>							
<ul style="list-style-type: none"> <li>• Utilizing MIST, mop up visible smoke within 25' of established trails</li> <li>• Flush cut felled tree stumps and obscure them, disperse all debris from cutting operation</li> <li>• Remove all firefighting equipment and trash from camps and backcountry, with special attention to the camps.</li> </ul>							
<b>Purpose:</b>							
<ul style="list-style-type: none"> <li>• Minimize negative impacts to infrastructure and private property and identify containment opportunities that are both efficient and have a high probability of success.</li> <li>• Retrieve/return all accountable property and leave the preserve and camps with minimum lasting impact..</li> </ul>							
<b>End State:</b>							
<ul style="list-style-type: none"> <li>• Fire contained on defensible lines with minimal to no impact on local communities.</li> <li>• Minimal visual evidence of the suppression actions taken on this fire.</li> </ul>							
<b>7. Special Instructions:</b>							
<ul style="list-style-type: none"> <li>• Establish and maintain LCES during operational.</li> <li>• Document work done to protect cabins, or damage to cabins, by taking before and after pictures of the camp structures. Document lat/long and brief description of the actions taken on an ICS-213</li> <li>• If medical hoist ship is needed , request through <b>"784"</b> (law dispatch) on BICY CMD channel</li> <li>• Assist Preserve with I.A. utilizing closest resources on the fire.</li> </ul>							
<b>8. Division/Group Communication Summary</b>							
Function	Channel	RX Freq N/W	RXTone/NAC	TX Freq N/W	TX Tone/NAC	Mode	
COMMAND	2	172.425N	1035	171.625N	1035	D	
TACTICAL	4	168.600N	0	168.600N	0	A	
AIR TO GROUND	10	168.3250N	0	168.3250N	0	A	
<b>9. Prepared By (Resource Unit Leader)</b>			<b>Approved By (Planning Section Chief)</b>			<b>Date</b>	<b>Time</b>
/s/Melonie Sellers			Carol O'Bryan			5/19/18	1700

## Division/Group Assignment List (ICS 204 WF)

<b>1. Incident Name:</b>				<b>3.</b>			
Avian Complex				Branch:  <b>Buzzard</b>		Division/Group  <b>E</b>	
<b>2. Operational Period:</b>							
Date/Time From: 5/20/2018 0800		Date/Time To: 5/21/2018 2000					
<b>4. Operations Personnel</b>							
BRANCH DIRECTOR				FIELD OPERATIONS		Bruce Malloy 5/22 O-169	
DIVISION/GROUP SUPERVISOR		Sammy Mcfarland 5/21 O-24		LEAD OPERATIONS			
		Kendall Carpenter (t) 5/21 O-48		PLANNING OPERATIONS			
<b>5. Resources Assigned this Period</b>							
Strike Team / Task Force / Resource Designator			LWD	Leader	Number Persons	Drop Off PT./Time	Pick Up PT./Time
ENG T6 OK-TLA 0961			E-131	5/27	Raymond Ludlow	2	0800 2000
ENG T6 FL-FNF 652			E-195	6/1	John Ramsay	3	0800 2000
BUGGY Transport			E-102	Local	Captain Steve-Victor	1	0800 2000
UTV Bobcat			E-107	Rental	TBD by DIVS	0	0800 2000
EMTF			O-276	6/1	E.T. Collinsworth	1	0800 2000
SOF2			O-192	5/26	Opie Blackwell	1	0800 2000
SOF2			O-227	5/24	Eric Bader	1	0800 2000
<b>6. Control Operations/Work Assignments:</b>							
<b>Task:</b>							
<ul style="list-style-type: none"> <li>• Utilizing MIST, mop up visible smoke within 25' of established trails</li> <li>• Flush cut felled tree stumps and obscure them, disperse all debris from cutting operation</li> <li>• Remove all firefighting equipment and trash from camps and backcountry, with special attention to the camps.</li> </ul>							
<b>Purpose:</b>							
<ul style="list-style-type: none"> <li>• Minimize negative impacts to infrastructure and private property and identify containment opportunities that are both efficient and have a high probability of success.</li> <li>• Retrieve/return all accountable property and leave the preserve and camps with minimum lasting impact..</li> </ul>							
<b>End State:</b>							
<ul style="list-style-type: none"> <li>• Fire contained on defensible lines with minimal to no impact on local communities.</li> <li>• Minimal visual evidence of the suppression actions taken on this fire..</li> </ul>							
<b>7. Special Instructions:</b>							
<ul style="list-style-type: none"> <li>• Establish and maintain LCES during operational.</li> <li>• Document work done to protect cabins, or damage to cabins, by taking before and after pictures of the camp structures. Document lat/long and brief description of the actions taken on an ICS-213</li> <li>• If medical hoist ship is needed , request through <b>"784"</b> (law dispatch) on BICY CMD channel</li> <li>• Assist Preserve with I.A. utilizing closest resources on the fire.</li> </ul>							
<b>8. Division/Group Communication Summary</b>							
Function	Channel	RX Freq N/W	RXTone/NAC	TX Freq N/W	TX Tone/NAC	Mode	
COMMAND	1	172.425N	1035	170.100N	1035	D	
TACTICAL	4	168.600N	0	168.600N	0	A	
AIR TO GROUND	6	169.1125N	0	169.1125N	0	A	
<b>9. Prepared By (Resource Unit Leader)</b>			<b>Approved By (Planning Section Chief)</b>			<b>Date</b>	<b>Time</b>
/s/Melonie Sellers			Carol O'Bryan			5/19/18	1700



## Division/Group Assignment List (ICS 204 WF)

<b>1. Incident Name:</b>			<b>3.</b>			
Avian Complex			<b>Branch:</b>	<b>Division/Group</b>		
<b>2. Operational Period:</b>			<b>Buzzard</b>	<b>N</b>		
Date/Time From: 5/20/2018 0800	Date/Time To: 5/21/2018 2000					
<b>4. Operations Personnel</b>						
BRANCH DIRECTOR			FIELD OPERATIONS	Bruce Malloy 5/22 O-169		
DIVISION/GROUP SUPERVISOR	Paul Ryan O-272 6/2		LEAD OPERATIONS PLANNING OPERATIONS			
<b>5. Resources Assigned this Period</b>						
Strike Team / Task Force / Resource Designator	LWD	Leader	Number Persons	Drop Off PT./Time	Pick Up PT./Time	
TFLD (t)	O-157	5/26	Joe Brinson	1	0800	2000
T2IA PR#4	C-4	5/28	Luis Saez	20	0800	2000
ENG T6 Southeast Forest	E-127	5/27	Steven Guckian	3	0800	2000
BUGGY Transport	E-99	Local	Captain Steve-Bobby	1	0800	2000
BUGGY Transport	E-101	Local	Captain Steve-Ralph	1	0800	2000
UTV	E-104	rental	TBD by DIVS	0	0800	2000
UTV K2	E-167	Rental	TBD by DIVS	0	0800	2000
EMTP	O-241	5/28	Frank Able	1	0800	2000
SOF2	O-192	5/26	Opie Blackwell	1	0800	2000
SOF2	O-227	5/24	Eric Bader	1	0800	2000
<b>6. Control Operations/Work Assignments:</b>						
<b>Task:</b>						
<ul style="list-style-type: none"> <li>Utilizing MIST, mop up visible smoke within 25' of established trails</li> <li>Flush cut felled tree stumps and obscure them, disperse all debris from cutting operation</li> <li>Remove all firefighting equipment and trash from camps and backcountry, with special attention to the camps.</li> </ul>						
<b>Purpose:</b>						
<ul style="list-style-type: none"> <li>Minimize negative impacts to infrastructure and private property and identify containment opportunities that are both efficient and have a high probability of success.</li> <li>Retrieve/return all accountable property and leave the preserve and camps with minimum lasting impact.</li> </ul>						
<b>End State:</b>						
<ul style="list-style-type: none"> <li>Fire contained on defensible lines with minimal to no impact on local communities.</li> <li>Minimal visual evidence of the suppression actions taken on this fire.</li> </ul>						
<b>7. Special Instructions:</b>						
<ul style="list-style-type: none"> <li>Establish and maintain LCES during operational.</li> <li>Document work done to protect cabins, or damage to cabins, by taking before and after pictures of the camp structures. Document lat/long and brief description of the actions taken on an ICS-213.</li> <li>If medical hoist ship is needed, request through <b>"784"</b> (law dispatch) on BICY CMD channel</li> <li>Assist Preserve with I.A. utilizing closest resources on the fire.</li> </ul>						
<b>8. Division/Group Communication Summary</b>						
Function	Channel	RX Freq N/W	RXTone/NAC	TX Freq N/W	TX Tone/NAC	Mode
COMMAND	2	172.425N	1035	171.625N	1035	D
TACTICAL	5	168.250N	0	168.250N	0	A
AIR TO GROUND	6	169.1125N	0	169.1125N	0	A
<b>9. Prepared By (Resource Unit Leader)</b>		<b>Approved By (Planning Section Chief)</b>			<b>Date</b>	<b>Time</b>
/s/Melonie Sellers		Carol O'Bryan			5/19/18	1700

## Division/Group Assignment List (ICS 204 WF)

<b>1. Incident Name:</b>				<b>3.</b>			
Avian Complex				Branch:		Division/Group	
<b>2. Operational Period:</b>				<b>BUZZARD</b>		<b>Z</b>	
Date/Time From: 5/20/2018 0800		Date/Time To: 5/21/2018 2000					
<b>4. Operations Personnel</b>							
BRANCH DIRECTOR				FIELD OPERATIONS		Bruce Malloy 5/22 O-169	
DIVISION/GROUP SUPERVISOR		Jason Lago 5/21 O-194		LEAD OPERATIONS PLANNING OPERATIONS			
<b>5. Resources Assigned this Period</b>							
Strike Team / Task Force / Resource Designator		LWD	Leader		Number Persons	Drop Off PT./Time	Pick Up PT./Time
TFLD	O-217	5/24	Tim Baron		1	0800	2000
ENG T6 Attack One	E-128	5/27	David Knowles		2	0800	2000
MOD Buffalo River Module	O-66	5/24	Josh Hampton		2	0800	2000
BUGGY Transport	E-98	Local	Captain Steve		1	0800	2000
UTV CC6	E-109	Rental	TBD by DIVS		0	0800	2000
UTV CC8	E-119	Rental	TBD by DIVS		0	0800	2000
THSP	O-252	5/24	Ryan McLellan		1	0800	2000
EMTP	O-241	5/28	Frank Able		1	0800	2000
SOF2	O-192	5/26	Opie Blackwell		1	0800	2000
SOF2	O-227	5/24	Eric Bader		1	0800	2000
<b>6. Control Operations/Work Assignments:</b>							
<b>Task:</b>							
<ul style="list-style-type: none"> <li>• Utilizing MIST, mop up visible smoke within 25' of established trails</li> <li>• Flush cut felled tree stumps and obscure them, disperse all debris from cutting operation</li> <li>• Remove all firefighting equipment and trash from camps and backcountry, with special attention to the camps.</li> </ul>							
<b>Purpose:</b>							
<ul style="list-style-type: none"> <li>• Minimize negative impacts to infrastructure and private property and identify containment opportunities that are both efficient and have a high probability of success.</li> <li>• Retrieve/return all accountable property and leave the preserve and camps with minimum lasting impact.</li> </ul>							
<b>Purpose:</b>							
<ul style="list-style-type: none"> <li>• Fire contained on defensible lines with minimal to no impact on local communities.</li> <li>• Minimal visual evidence of the suppression actions taken on this fire.</li> </ul>							
<b>End State:</b>							
<ul style="list-style-type: none"> <li>• Fire contained on defensible lines with minimal to no impact on local communities.</li> <li>• Minimal visual evidence of the suppression actions taken on this fire.</li> </ul>							
<b>7. Special Instructions:</b>							
<ul style="list-style-type: none"> <li>• Establish and maintain LCES during operational.</li> <li>• Document work done to protect cabins, or damage to cabins, by taking before and after pictures of the camp structures. Document lat/long and brief description of the actions taken on an ICS-213.</li> <li>• If medical hoist ship is needed, request through <b>"784"</b> (law dispatch) on BICY CMD channel</li> <li>• Assist Preserve with I.A. utilizing closest resources on the fire.</li> </ul>							
<b>8. Division/Group Communication Summary</b>							
Function	Channel	RX Freq N/W	RXTone/NAC	TX Freq N/W	TX Tone/NAC	Mode	
COMMAND	2	172.425N	1035	171.625N	1035	D	
TACTICAL	4	168.600N	0	168.600N	0	A	
AIR TO GROUND	6	169.1125N	0	169.1125N	0	A	
<b>9. Prepared By (Resource Unit Leader)</b>			<b>Approved By (Planning Section Chief)</b>			<b>Date</b>	<b>Time</b>
/s/Melonie Sellers			Carol O'Bryan			5/19/18	1700

## Division/Group Assignment List (ICS 204 WF)

<b>1. Incident Name:</b>			<b>3.</b>			
Avian Complex			<b>Branch:</b>  <b>Buzzard</b>	<b>Division/Group</b> <b>CURLEW/ CARACARA/ VULTURE</b>		
<b>2. Operational Period:</b>						
Date/Time From: 5/20/2018 0800			Date/Time To: 5/21/2018 2000			
<b>4. Operations Personnel</b>						
BRANCH DIRECTOR			FIELD OPERATIONS	Bruce Malloy 5/22 O-169		
DIVISION/GROUP SUPERVISOR			LEAD OPERATIONS PLANNING OPERATIONS			
<b>5. Resources Assigned this Period</b>						
Strike Team / Task Force / Resource Designator	LWD	Leader	Number Persons	Drop Off PT./Time	Pick Up PT./Time	
<b>6. Control Operations/Work Assignments:</b>						
Task: Monitor by air.						
• .						
Purpose: Monitor fire activity.						
• .						
• .						
End State: Fire remains in current control lines.						
• .						
<b>7. Special Instructions:</b>						
• Coordinate with Everglades National Park if fire reaches Everglades National Park Map's.						
• .						
<b>8. Division/Group Communication Summary</b>						
Function	Channel	RX Freq N/W	RXTone/NAC	TX Freq N/W	TX Tone/NAC	Mode
COMMAND	2	172.425N	1035	171.625N	1035	D
TACTICAL	8	166..7500N	0	166.7500N	0	A
AIR TO GROUND	6	169.1125N	0	169.1125N	0	A
<b>9. Prepared By (Resource Unit Leader)</b>			<b>Approved By (Planning Section Chief)</b>		<b>Date</b>	<b>Time</b>
/s/Melonie Sellers			Carol O'Bryan		5/19/18	1700

# AIR OPERATIONS SUMMARY

OPERATIONAL PERIOD DATE: 05-20 to 21-2018

0900-2000

1. INCIDENT NAME: Avian Complex	2. PREPARED BY: Peter Kubiak	PREPARED DATE/TIME: 05/19/2018 1730	3. Sunrise: 0636 Sunset: 2008
---------------------------------	------------------------------	-------------------------------------	-------------------------------

4. REMARKS (Safety Notes, Hazards, Air Operations Special Equipment,, etc.): Medivac Aircraft: 40MA  
**If hoist helicopter is needed for life threatening situation announce 784 on BICY command frequency. Give lat/long and ground contact.**  
**IA air / ground will be on 85 north of I-75 and 59 south of I-75**  
MTR- Located along state road 29. Fire Dispatch gets MTR activity every morning  
Do not over fly structures with external load missions. All aircraft should use strobes and running lights in smoky conditions.  
Hazards: Snags, non-incident aircraft, and winds.  
Contract helicopters working in seismic project area located south of I-75 in north central portion of Preserve.  
**AVIAN FLIGHT FOLLOWING WILL SWITCH FROM HELIBASE TO BICY DISPATCH BEGINNING SATURDAY 0900**

5. Squawk 1255  
No TFR

6. PERSONNEL	Phone	7. FREQUENCIES	AM	FM	8. FIXEDWING	Base
AOBD: Pete Kubiak O-284	404-661-4819	A/A primary rotor A/A primary Fixed Wing	119.2500 119.5750		Air Attack-	N690JK AC690 ( Colville) MKY (A-30)
ATGS - Brandon Colville	541-771-1080	A/G Flamingo (85)		168.3250 RX/TX		
Mike Roof- BICY Acting Aviation Mgr	702-610-4574	A/G Buzzard /Curlew (59)		169.1125 RX/TX		
<u>Oasis Helibase (9FL7)</u> HEB2 Matt Lingenfelter	805-705-8621	Flight Following (BICY)		169.7250 RX N1514 163.3875 TX N1738		
<u>Immokalee Airport IMM</u> Seat Manager - Kevin Carter	512-940-4050					
Big Cypress Fire Dispatch	239-695-9280 x 104	Air/Guard Deck		168.6250 RX/TX Tone 110.9 163.1000		

## 9. HELICOPTERS (Use Additional Sheets As Necessary)

FAA N# or Designator	TY	MAKE/MODEL	BASE	START	REMARKS	FAA N# or Designator	TY	MAKE/MODEL	BASE	START	REMARKS
40MA	3	Bell 407 (A-11)	Oasis	0900							
206RW	3	Bell 206B3	Oasis	0900	Park Helicopter						
715HT	1	CH-54B (A-10)	Naples	1000	SkyCrane- tanked						

## 10. TASK/MISSION/ASSIGNMENT (Use ICS-220a if additional space needed; Type/Function includes: Air Tactical, Retardant, Recon, Personnel Transport, Water Dropping, etc.)

TYPE/FUNCTION	NAME OF PERSONNEL OR CARGO (if applicable) OR INSTRUCTIONS FOR TACTICAL AIRCRAFT	MISSION START	FLY FROM	FLY TO
Mapping	As Requested	0930		
Reconnaissance	As Requested	0930		
Water Drops	As Requested	0930		

# **SAFETY MESSAGE**

*Avian Complex  
May 20-22, 2018*

*The commitment to and accountability for safety is a shared responsibility of all incident personnel.  
All incident plans and activities must reflect this commitment.  
Do you accept this responsibility?*

## **Risks and Hazards:**

### **1. INCIDENT TRANSITION\***

- Ensure communications and frequencies are known to all personnel.
- Brief all personnel on objectives, leader's intent, and changes in supervisory contacts.
- Have contact information for demobing personnel.

### **2. WEATHER & FIRE BEHAVIOR**

- Are you prepared for predicted fire behavior as forecasted?
- Have you planned for changes in weather – Rain? T-storms, Lightning. Hotter and drier?
- Do you know what to do if caught in a thunderstorm away from shelter?

### **3. TRANSPORTATION**

- Drive defensively, wear seat belts, drive with lights on, and observe speed limits.
- Avoid distracted driving. Do not use cell phones or radios while driving.

### **4. DEHYDRATION**

- Maintain adequate fluid intake to prevent dehydration.
- Know the signs of heat stress and heat stroke and how to treat each.

### **5. MEDICAL PLAN**

- Are you prepared to deal with a medical emergency? Review the Medical Plan. Know where the medivac site closest to you is located.

**\* “And so began something that had not quite begun and would not soon end, with many people in many places moving off in different directions and on missions which they all mistakenly thought they understood”. Tom Clancy [From] A Clear and Present Danger**

**Safety Officers: OUTGOING>** Randy Miller, Michael Heard, Kris Wilson.  
**INCOMING>** SOF2, Eric Bader-(303) 704-1164; SOF2, Opie Blackwell-(601) 562-5288.

## INCIDENT SAFETY ANALYSIS 215a

Avian Complex - 5/18-21/2018

8. Location	9. Hazard	6. Control or Abatement Action (Engineering, Administrative, PPE, Avoidance, Education, etc)
All DIVS	Air Operations	<ul style="list-style-type: none"> <li>~ Follow " Aviation Watch-Out Situations" on page 44, IRPG.</li> <li>~ Don't plan on air resources for medical transport or resupply.</li> <li>~ Refer to page 57, IRPG for directing bucket drops.</li> <li>~ Ensure positive communication with all air resources.</li> </ul>
All DIVS	Hazard Trees	<ul style="list-style-type: none"> <li>~ Follow "Hazard Tree Safety" guidelines, IRPG page 22.</li> <li>~ Post lookouts, or use a spotter in mop-up areas with personnel.</li> <li>~ Don't park vehicles or take breaks in high concentrations of hazard trees.</li> <li>~ Establish trigger points for disengagement during high wind events.</li> <li>~ Remember that the hazard zone extends a minimum of 2 1/2 tree heights.</li> <li>~ Cut within your skill/ability level</li> </ul>
IA	Roadside Response	<ul style="list-style-type: none"> <li>~ Do not engage in suppression activities along I-75 unless Law Enforcement establishes traffic control.</li> <li>~ Conduct all operations as far as possible from traffic lanes.</li> <li>~ Park all vehicles on the same side of road.</li> <li>~ Use only vehicles equipped emergency lights along highways.</li> <li>~ Operate pumps from the non-traffic or from the cab.</li> <li>~ Anytime traffic is affected by the incident, contact the local law enforcement agency that has jurisdiction for assistance.</li> </ul>
All DIVS	Injury & Medical Emergency	<ul style="list-style-type: none"> <li>~ Assist injured employee appropriate medical care.</li> <li>~ Use EMT's on Division for initial care.</li> <li>~ Follow medical protocol as outlined in ICS-206 &amp; IRPG Pgs 99-108</li> </ul>
All DIVS	Swamp Buggy	<ul style="list-style-type: none"> <li>~ Ensure equipment is inspected and safe to use.</li> <li>~ Restrict swamp buggy use to approved trails.</li> <li>~ Ensure operator is trained and certified to operate.</li> <li>~ Passengers maintain 3 points of contact when loading and unloading.</li> <li>~ Ensure operator and passengers has proper PPE according to the BICY Operations Policy.</li> </ul>
All DIVS	Driving & Traffic	<ul style="list-style-type: none"> <li>~ Practice "Defensive Driving" techniques traveling on all roads and city streets.</li> <li>~ Use spotters when backing.</li> <li>~ Honk horn to alert personnel when backing.</li> <li>~ Always use headlights.</li> <li>~ Yield to pedestrians and bicycles.</li> <li>~ Observe posted speed limits. Be aware of lower speed limits at night.</li> <li>~ Use the 3 second rule for following distance when driving.</li> <li>~ Avoid distractions (eating, cell phones, radio).</li> <li>~ Ensure that windshields are kept clean of dust and bugs.</li> </ul>
All DIVS	Structure Protection & HAZMAT	<ul style="list-style-type: none"> <li>~ Review "Wildland Urban Interface" Watch outs, IRPG page 12.</li> <li>~ Use "Structure Assessment" checklist, IRPG pages 12-16.</li> <li>~ Follow "HAZMAT Incident Operations" on pages 34-36 in IRPG.</li> </ul>
All DIVS	Unburned Area/Reburn Potential	<ul style="list-style-type: none"> <li>~ Monitor weather.</li> <li>~ Base actions upon observed and predicted fire behavior.</li> <li>~ LCES Checklist (IRPG pg. 6).</li> <li>~ Look Up, Down and Around (IRPG pg. 2-3).</li> </ul>
All DIVS	ATV/UTV use	<ul style="list-style-type: none"> <li>~ Ensure equipment is inspected and safe to use.</li> <li>~ Restrict UTV's to max width of 50" on ATV trails due to width and severe out sloped conditions.</li> <li>~ Ensure operator is trained and certified to operate.</li> <li>~ Ensure operator has proper PPE according to BICY policy, hardhats are acceptable only when speeds are less than 15 mph.</li> <li>~ Question if it is mission critical.</li> </ul>

## INCIDENT SAFETY ANALYSIS 215a

All DIVS	Heat Related Illness (HRI)& Dehydration	<ul style="list-style-type: none"> <li>~ Drink Fluids throughout operational period (6-8 qts/shift).</li> <li>~ Maintain water/electrolyte ratio of 3 to 1.</li> <li>~ Carry extra water on line and cache water at drop points.</li> <li>~ Take Frequent breaks, minimum of 10 minutes every hour.</li> <li>~ Allow out of area resources time to acclimatize before expecting peak performance.</li> <li>~ Recognize symptoms of HEAT RELATED ILLNESS which include.               <ul style="list-style-type: none"> <li>o Lack of energy</li> <li>o Headaches, dizziness</li> <li>o Lack of rest</li> <li>o No hunger, poor eating habits</li> <li>o Hot skin, and lack of sweating</li> </ul> </li> </ul>
All DIVS	Heavy Equipment Operations	<ul style="list-style-type: none"> <li>~ Ensure communications are established with operators.</li> <li>~ Use hand signals if other communications are unavailable.</li> <li>~ Maintain a 50'-100' exclusion area around equipment and increase it to 1 1/2 times tree height when in timber.</li> <li>~ Use a spotter when backing.</li> <li>~ Avoid working below heavy equipment.</li> </ul>
All DIVS	Communications	<ul style="list-style-type: none"> <li>~ Maintain communication with aviation resources, and suppression organization.</li> <li>~ Ensure all know frequency and protocol for contacting resources.</li> <li>~ Utilize the ICS 205.</li> <li>~ Utilize human repeaters when working in dead spots.</li> </ul>
All DIVS	Wildlife & Livestock	<ul style="list-style-type: none"> <li>~ Watch out for wildlife &amp; livestock inside fire area and along roadways.</li> <li>~ Clean up all debris and trash during each operational period.</li> <li>~ Be aware of your surrounding, watch footing and dont harass the wildlife.</li> <li>~ Be on the lookout for poisonous snakes. Watch were you step and place your hands .</li> <li>~ Lookout and avoid exoctic snakes that can be extremely large.</li> </ul>
All DIVS	Chain Saw Operations	<ul style="list-style-type: none"> <li>~ Follow "Hazard Tree Safety" guidelines, IRPG page 22</li> <li>~ Look up, Look down, Look around for hazard tree indicators.</li> <li>~ Only fell and buck trees within your expertise, and training.</li> <li>~ Follow "Procedural Felling Operations" on page 79 in IRPG.</li> <li>~ Do not fall trees during high wind events.</li> <li>~ Ensure proper use of all required PPE.</li> </ul>
All DIVS	Firefighter & Public Smoke Exposure	<ul style="list-style-type: none"> <li>~ Identify homes and structures with private parties remaining behind the evacuation.</li> <li>~ Identify personnel responsible for contacting private parties.</li> <li>~ Use warning lights and provide traffic control on roadways during smoky and night operations.</li> <li>~ Rotate crews out of smoky areas during firing and mop-up operations.</li> <li>~ Contact Communications when firing operations are initiated.</li> </ul>
All DIVS	Foot Travel	<ul style="list-style-type: none"> <li>~ Watch footing, look for tripping hazards, maintain balance .</li> <li>~ Watch for uneven surfaces, slippery terrain and wildlife .</li> </ul>
All DIVS	Poisonous Plants	<ul style="list-style-type: none"> <li>~ Identify and Avoid hazard areas.</li> <li>~ Launder clothing.</li> <li>~ Shower frequently.</li> </ul>
All DIVS	Unplanned Public Interaction	<ul style="list-style-type: none"> <li>~ Be alert to non-fire personnel in areas with suppression personnel.</li> <li>~ All non-fire personnel will be escorted while on fireline.</li> <li>~ Post lookouts to in areas with public to avoid conflicts with mission tasks.</li> <li>~ Ensure sufficient security to restrict access to exclusion area.</li> </ul>
All DIVS	Vehicle Operations in Inclement Weather	<ul style="list-style-type: none"> <li>~ Be alert for potential muddy and slick road surfaces.</li> <li>~ Avoid parking on soft shoulders along roads.</li> <li>~ Stay off secondary roads in wet conditions.</li> <li>~ Increase following distance on slick road surfaces.</li> <li>~ Send a scout to evaluate roads and work area prior to personnel engagement.</li> </ul>

**MEDICAL PLAN (ICS 206)**

<b>1. Incident Name:</b> Avian Complex			<b>2. Operational Period:</b> Date 05/20-22/18 Time: 0800 - 2000				
<b>3. Medical Aid Stations:</b>							
Name		Location		Contact Number(s)/Frequency		Paramedics on Site?	
Gene-Paul Matson	MEDL O-285	ICP		434-665-0444		<input checked="" type="checkbox"/> EMT	<input type="checkbox"/> No
Mike Worcester	O-218	Flamingo – A/B		303-908-3324		<input checked="" type="checkbox"/> EMT	<input type="checkbox"/> No
John Dunzweiler EMTP	MEDL(T) O-245	ICP		606-594-1627		<input checked="" type="checkbox"/> EMT	<input type="checkbox"/> No
Frank Abel EMTP	O-241	Buzzard - N/Z		423-595-1578		<input checked="" type="checkbox"/> EMT	<input type="checkbox"/> No
E T Collinsworth	O-276	Buzzard - E		520-237-2670		<input checked="" type="checkbox"/> EMT	<input type="checkbox"/> No
Spencer Garden	O-275	Flamingo – A/B		918-698-9590		<input checked="" type="checkbox"/> EMT	<input type="checkbox"/> No
<b>4. Transportation (indicate air or ground):</b>							
<b>ON SCENE AMBULANCE</b>							
Collier County EMS (ground)		Oasis Visitor Center		911 / Communications		<input checked="" type="checkbox"/> ALS	
Collier County EMS (ground)		Deep Lake		911 / Communications		<input checked="" type="checkbox"/> ALS	
<b>Ambulance Service</b>		<b>Location</b>		<b>Number(s)/Frequency</b>		<b>Level of Service</b>	
Collier County EMS (ground)		Everglades City (Medic 61)		911 / 239-252-3740		<input checked="" type="checkbox"/> ALS	<input type="checkbox"/> BLS
Collier County Med-Flight (air)		Naples Airport		911		<input checked="" type="checkbox"/> ALS	<input type="checkbox"/> BLS
Greater Naples Fire Rescue (ground)		Everglades City		911 / 239-348-7540		<input checked="" type="checkbox"/> ALS	<input type="checkbox"/> BLS
Miami Dade Fire Rescue air hoist (air)		Miami		911 / 784 on BICY command frequency		<input type="checkbox"/> ALS	<input checked="" type="checkbox"/> BLS
<b>5. Hospitals:</b>							
Hospital Name	Address	Contact Number(s)	Travel Time		Trauma Center	Burn Center	Helipad
			Air	Ground			
Physicians Regional <b>Collier Blvd</b>	8300 Collier Blvd. Naples, FL 34114 Lat:26°6.313'/Long: -81°41.106'	239-354-6000 (Main) 239-354-6190 (ER)	15	50	<input type="checkbox"/> Yes Level: _____	<input type="checkbox"/> Yes <input checked="" type="checkbox"/> No	<input checked="" type="checkbox"/> Yes <input type="checkbox"/> No
Physicians Regional <b>Pine Ridge</b>	6101 Pine Ridge Road, Naples 34119 Lat:26°12.833'/Long: -81°43.954'	239-348-4000 (Main) 239-304-4748 (ER)	15	50	<input type="checkbox"/> Yes Level: _____	<input type="checkbox"/> Yes <input checked="" type="checkbox"/> No	<input checked="" type="checkbox"/> Yes <input type="checkbox"/> No
Naples Community Hospital	350 7 <sup>th</sup> Street North, Naples 34102 Lat:26°9.046'/Long: -81°47.907'	239-513-7709 (Main) 239-436-5151 (ER)	15	60	<input checked="" type="checkbox"/> Yes Level: 2	<input type="checkbox"/> Yes <input checked="" type="checkbox"/> No	<input checked="" type="checkbox"/> Yes <input type="checkbox"/> No
Jackson Memorial Hospital	1611 NW 12 Avenue, Miami Lat:25°47.508'/Long: -80°12.756'	305-585-1111 (Main) 305-585-6910 (ER)	20	60	<input checked="" type="checkbox"/> Yes Level: 1	<input checked="" type="checkbox"/> Yes <input type="checkbox"/> No	<input checked="" type="checkbox"/> Yes <input type="checkbox"/> No
Kendal Regional Medical Center	11750 SW 40 <sup>th</sup> St., Miami 33175 Lat:25°43.916'/Long: -80°23.148'	305-223-3000 (Main) 305-227-5544 (ER)	20	50	<input checked="" type="checkbox"/> Yes Level: 1	<input type="checkbox"/> Yes <input checked="" type="checkbox"/> No	<input checked="" type="checkbox"/> Yes <input type="checkbox"/> No
EPN Urgent Care Center	6400 Davis BLVD Suite 103, Naples, 34104	239-775-2300 (Main)		29	No	No	No
<b>6. Special Medical Emergency Procedures:</b>							
<ul style="list-style-type: none"> <li>• Patient or nearest responder notifies Group Supervisor who will respond to the scene and become the "incident within an incident" (IWI) commander.</li> <li>• Group Supervisor will notify nearest medical responder and ICP-Communications of the incident and "Eight Line" report attached to the back of this IAP or page 108 of the IRPG.</li> <li>• EPN Urgent Care Center is for non-Life threatening medical care, can only be reached by ground transport. Hours: Mon – Sat 0800-1900; Sunday 0800-1600</li> </ul>							
<b>7. Prepared by (MEDL):</b> Gene-Paul Matson Signature: /s/ Gene-Paul Matson							
<b>8. Approved by (SOF2):</b> Eric Bader Signature: /s/ Eric Bader							
<b>ICS 206</b>		<b>IAP Page</b>		<b>Date/Time: 05/19/2018 @ 2200</b>			

Helicopter Landing Zones			
Landing Zone:	Coordinates:	Landing Zone:	Coordinates:
Oasis	25 51.45 x 81 02.06	Calusa Ranch Airstrip:	26 03.17 x 81 04.03
Ochopee	25 53.99 x 81 19.25	Sanctuary Airstrip:	26 13.14 x 80 56.13
Carnestown	25 54.61 x 81 21.81	Environmental Education Center	25 44.47 x 80 56.52
Pad 1/ End of 11 Milerd	25 58.94 x 80 55.46	Deep Lake Station LZ:	26 02.56 x 81 20.59
NPS Cal Stones	26 02.27 x 81 03.83	Poppenhagers Airstrip	25 59.109 x 81 02.42



<b>INCIDENT RADIO COMMUNICATIONS PLAN</b>		Incident Name      Controlled Unclassified Information//Basic <b>AVIAN COMPLEX</b>				Date/Time Prepared <b>5/18/2018 1800</b>		Operational Period Date/Time <b>5/20_22/2018 0800-2000</b>	
Ch #	Function	Channel Name/Trunked Radio System Talkgroup	Assignment	RX Freq    N or W	RX Tone/NAC	TX Freq    N or W	Tx Tone/NAC	Mode    A, D or M	Remarks
1	COMMAND	CARNSRPT	COMMAND	172.4250N	1035	170.1000N	1035	D	Div C, E, J
2	COMMAND	OASIS	COMMAND	172.4250N	1035	171.6250N	1035	D	DIV A,N, T, V, Z
3	AVIATION	A/G IA	AIR TO GROUND	166.6125N		166.6125N			unassigned
4	TACTICAL	BICY TAC 1	DIV A, Z, C, E	168.6000N	0	168.6000N	0	A	BUZZARD
5	TACTICAL	BICY TAC 2	J, N, T, V	168.2500N	0	168.2500N	0	A	BUZZARD
6	AIR TO GROUND	A/G 59	AVIATION	169.1125N	0	169.1125N	0	A	BUZZARD/CURLEW
7	REPEATER	PANTHER	FLAMINGO	169.6500N	677	166.3750N	677	D	FLAMINGO
8	TACTICAL	PANTHER TAC 1	BB, RR, OO, CURLEW	166.7500N	0	166.7500N	0	A	FLAMINGO/CURLEW
9	TACTICAL	PANTHER TAC 2	INITIAL ATTACK	166.8250N	0	166.8250N	0	A	INITIAL ATTACK
10	AIR TO GROUND	A/G 85	AVIATION	168.3250N	0	168.3250N	0	A	FLAMINGO FIRE
11	TACTICAL 11	EVERTAC1	UNASSIGNED	168.0500N	0	168.0500N	0	A	UNASSIGNED
12	AVIATION	A/G 12	AIR TO GROUND	169.1500N	0	169.1500N	0	A	UNASSIGNED
13	COORDINATION	RED	COORDINATION W STATE	154.2650N	0	154.2650N	0		STATE RESOURCES
14	COORDINATION	WHITE21	COORDINATION W STATE	154.2800N	0	154.2800N	0		STATE RESOURCES
15	COORDINATION	BLUE V23	LOCAL COORDINATION	154.2950N	0	154.2950N	0	A	STATE RESOURCES
16	Air Guard	Air Guard	Emergency Aircraft Comms	168.6250N	0	168.6250N	110.9	A	EMERGENCY
Prepared By (Communications Unit) <b>/s/ Brian Gieryk COMT 208-606-8587 ICP 470-214-2100</b>					Incident Location    Big Cypress National Wildlife Preserve County Collier    State    FL      Latitude 25 54.024N    Longitude    81 18.638W				

The convention calls for frequency lists to show four digits after the decimal place, followed by either an "N" or a "W", depending on whether the frequency is narrow or wide band. Mode refers to either "A" or "D" indicating analog or digital (e.g. Project 25) or "M" indicating mixed mode. All channels are shown as if programmed in a control station, mobile or portable radio. Repeater and base stations must be programmed with the Rx and Tx reversed.

8

7

6

5a

5b

4

3

1

Donna Drive

Briefing

Ground  
Support

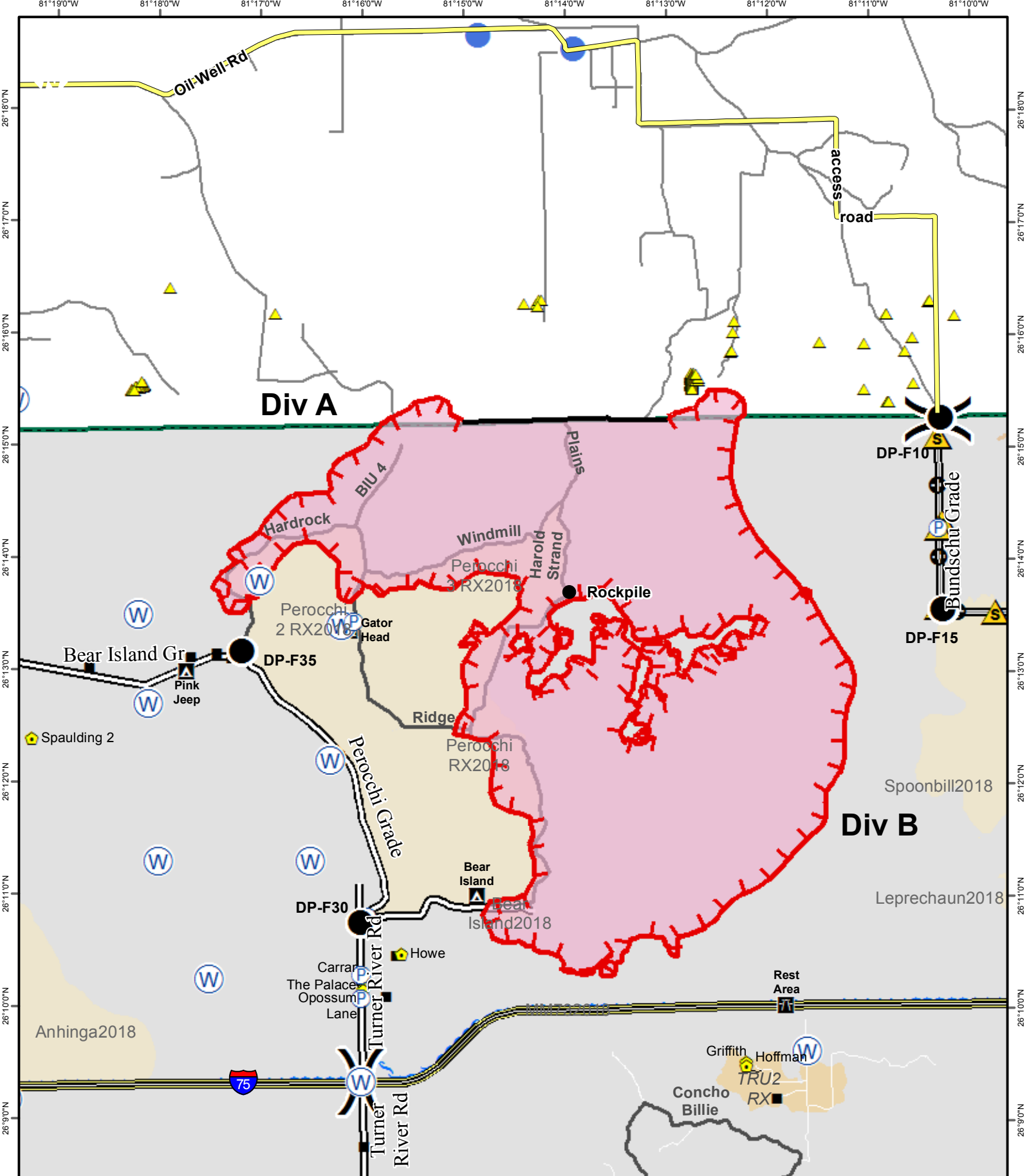
Food

Water

Ice

Fuel

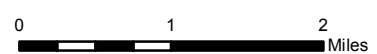
1 Communications  
3 IC, PIO, Safety  
4 Logistics  
5a Operations  
5b Medical  
6 Finance  
7 Plans  
8 GIS, ITSS

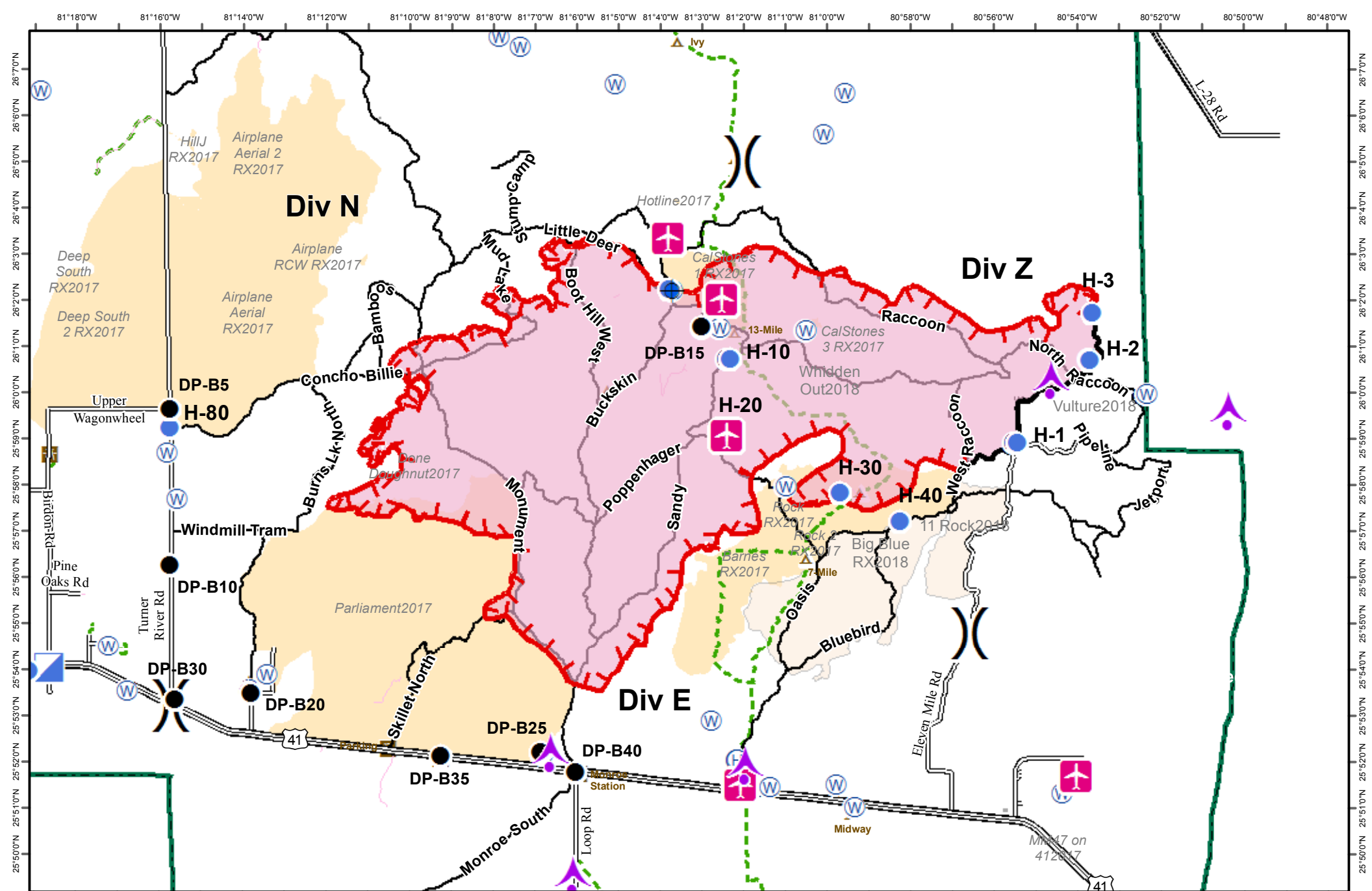


FL-BCP-018031  
**Avian Complex**  
**Flamingo**  
**11,689 acres**  
 Operational Period: May 20 - 22, 2018  
 Perimeter current as of May 18 (0600 hrs by IR)  
 Datum: NAD 83

- Uncontrolled Fire Edge
- Completed Line
- Masticator Line
- Wildfire Daily Fire Perimeter
- BICY boundary

- Camp
- Improved Road
- Safety Zone
- Water Source
- Helispot
- Pump Location








FL-BCP-018031  
**Avian Complex**  
**Buzzard**  
**62,404 acres**  
 Operational Period: May 20 - 22, 2018  
 Perimeter current as of May 18 (0600 hrs by IR)  
 Datum: NAD 83


**Legend**

Uncontrolled Fire Edge	BICY boundary	Dip Site
Completed Line	Drop Point	Helispot
Wildfire Daily Fire Perimeter	Helibase	Water Source
Improved Road	Division Break	

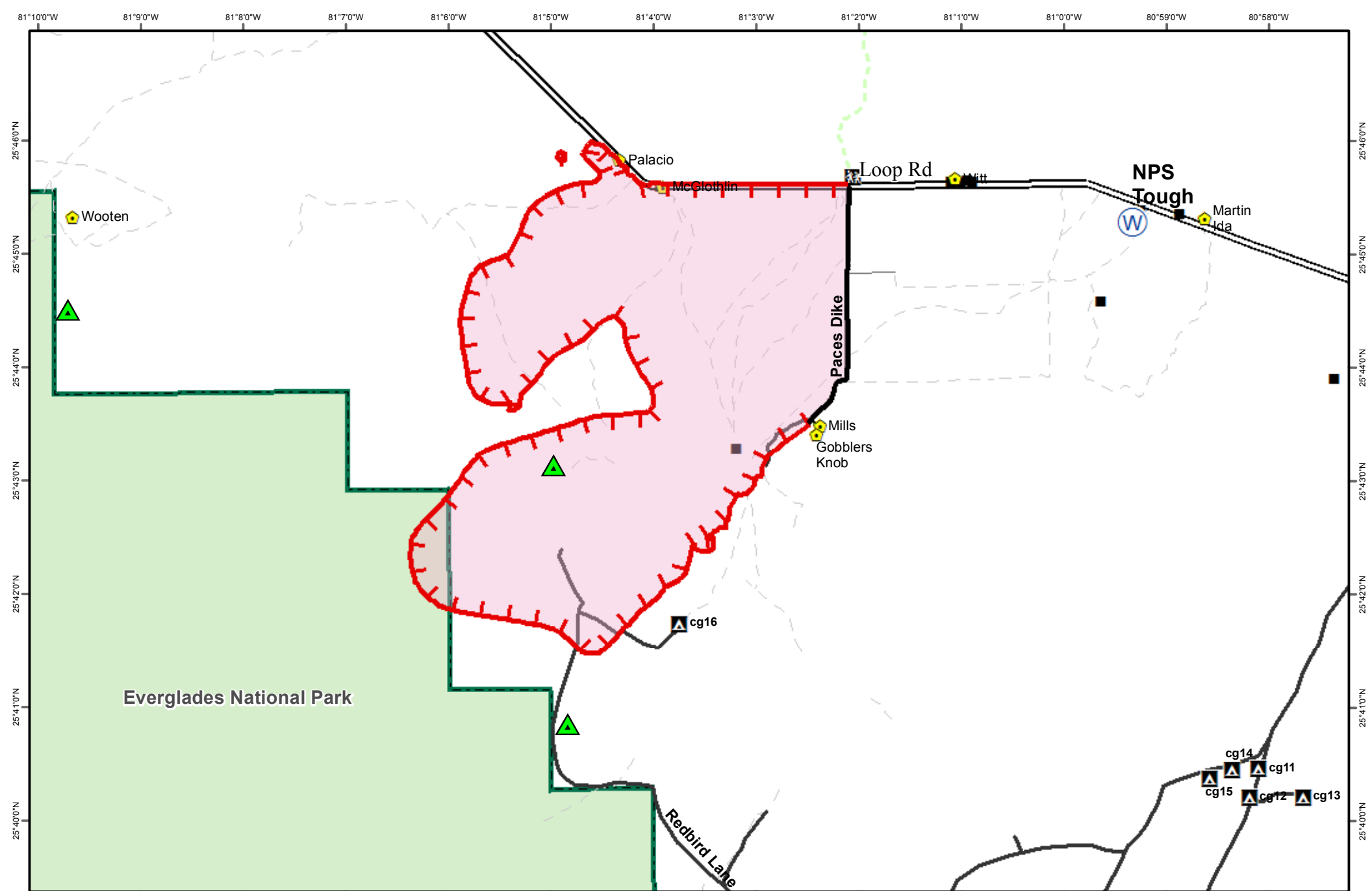
  
 BIG CYPRESS NATIONAL PRESERVE  
 U.S. FISH & WILDLIFE SERVICE  
 R4 - ZONE B

  
 U.S. FISH & WILDLIFE SERVICE

















0 1 2 3 4 5 6 Miles



FL-BCP-018031  
**Avian Complex Curlew**  
**8,366 acres**  
 Operational Period: May 20 -22, 2018  
 Perimeter current as of May 18 (0600 hrs by IR)  
 Datum: NAD 83

**Legend**

-  Uncontrolled Fire Edge
-  Wildfire Daily Fire Perimeter
-  Camp, Private
-  Camp, NPS
-  Improved Road
-  Canal
-  BICY boundary
-  Dip Site
-  Helispot
-  Water Source
-  Division Break
-  eaglenests



**PHONE LIST - AVIAN COMPLEX**

<b>Position</b>	<b>Name</b>	<b>Phone Number</b>	<b>Position</b>	<b>Name</b>	<b>Phone Number</b>
<b>COMMAND</b>			<b>FINANACE</b>		
Incident Commander	Matt Martens	406-291-1179	Chief	Laura Wilson	765-427-7564
Incident Commander (t)	Greg Suszek	239-877-9545	Comp/Claims	Terri McDonald	352-454-5385
Public Information	Punky Moore	530-640-1168	Cost Unit Leader	Tom Steele	770-363-3583
PIOF	Tom Simpson	865-621-7221			
Safety Officer	Opie Blackwell	601-562-5288	<b>PLANNING</b>		
Safety Officer	Eric Bader	303-704-1164	Chief	Carol O'Bryan	903-263-8704
<b>OPERATIONS</b>			Resource Unit Leader	Melonie Sellers	601-508-8997
Lead Ops	Bruce Malloy	830-313-3996	ITSS	David Koehler	602-321-8573
Flamingo Division A	Jason Klawinsky	936-520-8827	GISS	Stephen Penny	208-315-3729
Flamingo Division B	Paul Ryan	239-826-6755	SOPL	Ashley Sites	406-223-0143
Buzzard Division E	Sammy Mcfarland	580-380-9680	LTAN	Todd Erdody	406-580-6717
Buzzard Division E (t)	Kendall Carpenter	918-721-2502	<b>LOGISTICS</b>		
Buzzard Division N	Paul Roose	406-640-1337	Chief	Susan Cornett	903-930-5321
Buzzard Division Z	Jason Lago	850-570-2217	Supply Unit Leader	Susan Cornett	903-930-5321
Caracara/Curlew/Vulture	Unstaffed		Facilities Unit Leader	Gene-Paul Matson	434-665-0444
<b>AIR OPERATIONS</b>			Ground Support Unit Leader	Mike Nelson	484-880-7494
Air Operation Branch Director	Pete Kubiak	404-661-4819	Equipment Manager	Ron Brewer	619-373-4900
Helibase Manager	Matt Lingenfelter	805-705-8621	Equipment Manager	Tom Hitt	307-840-2212
			Ordering Manager	Christopher Bolen	231-457-3722
			Communications	Bryan Gieryk	208-606-8587
			Rado	Burke Benton	303-884-4004
			Base Camp Manager	Steve Helton	770-780-2527
			Medical Unit Leader	Gene-Paul Matson	434-665-0444
			Security Mananger	Sasha Herrin	239-300-5755

ICP Communications

Big Cypress Dispatch - 239-695-9280 ext. 104 OR 239-450-2403



# After Hours Medical Phone Number – Gene-Paul Matson: 434-665-0444

## MEDICAL PLAN (ICS 206 WF)

Controlled Unclassified Information//Basic

### Medical Incident Report

**FOR A NON-EMERGENCY INCIDENT, WORK THROUGH CHAIN OF COMMAND TO REPORT AND TRANSPORT INJURED PERSONNEL AS NECESSARY.**

**FOR A MEDICAL EMERGENCY: IDENTIFY ON SCENE INCIDENT COMMANDER BY NAME AND POSITION AND ANNOUNCE "MEDICAL EMERGENCY" TO INITIATE RESPONSE FROM IMT COMMUNICATIONS/DISPATCH.**

**Use the following items to communicate situation to communications/dispatch.**

**1. CONTACT COMMUNICATIONS / DISPATCH** (Verify correct frequency prior to starting report)

*Ex: "Communications, Div. Alpha. Stand-by for Emergency Traffic."*

**2. INCIDENT STATUS:** Provide incident summary (including number of patients) and command structure.

*Ex: "Communications, I have a Red priority patient, unconscious, struck by a falling tree. Requesting air ambulance to Forest Road 1 at (Lat./Long.) This will be the Trout Meadow Medical, IC is TFLD Jones. EMT Smith is providing medical care."*

Severity of Emergency / Transport Priority	<input type="checkbox"/> <b>RED / PRIORITY 1 Life or limb threatening injury or illness. Evacuation need is IMMEDIATE</b> <i>Ex: Unconscious, difficulty breathing, bleeding severely, 2° – 3° burns more than 4 palm sizes, heat stroke, disoriented.</i> <input type="checkbox"/> <b>YELLOW / PRIORITY 2 Serious Injury or illness. Evacuation may be DELAYED if necessary.</b> <i>Ex: Significant trauma, unable to walk, 2° – 3° burns not more than 1-3 palm sizes.</i> <input type="checkbox"/> <b>GREEN / PRIORITY 3 Minor Injury or illness. Non-Emergency transport</b> <i>Ex: Sprains, strains, minor heat-related illness.</i>	
Nature of Injury or Illness & Mechanism of Injury		<i>Brief Summary of Injury or Illness (Ex: Unconscious, Struck by Falling Tree)</i>
Transport Request		<i>Air Ambulance / Short Haul/Hoist Ground Ambulance / Other</i>
Patient Location		<i>Descriptive Location &amp; Lat. / Long. (WGS84)</i>
Incident Name		<i>Geographic Name + "Medical" (Ex: Trout Meadow Medical)</i>
On-Scene Incident Commander		<i>Name of on-scene IC of Incident within an Incident (Ex: TFLD Jones)</i>
Patient Care		<i>Name of Care Provider (Ex: EMT Smith)</i>

**3. INITIAL PATIENT ASSESSMENT:** Complete this section for each patient as applicable (start with the most severe patient)

Patient Assessment: See IRPG page 106

Treatment:

**4. TRANSPORT PLAN:**

Evacuation Location (if different): (Descriptive Location (drop point, intersection, etc.) or Lat. / Long.) Patient's ETA to Evacuation Location:

Helispot / Extraction Site Size and Hazards:

**5. ADDITIONAL RESOURCES / EQUIPMENT NEEDS:**

*Example: Paramedic/EMT, Crews, Immobilization Devices, AED, Oxygen, Trauma Bag, IV/Fluid(s), Splints, Rope rescue, Wheeled litter, HAZMAT, Extrication*

**6. COMMUNICATIONS: Identify State Air/Ground EMS Frequencies and Hospital Contacts as applicable**

Function	Channel Name/Number	Receive (RX)	Tone/NAC *	Transmit (TX)	Tone/NAC *
COMMAND					
AIR-TO-GRND					
TACTICAL					

**7. CONTINGENCY: Considerations:** If primary options fail, what actions can be implemented in conjunction with primary evacuation method? Be thinking ahead.

**8. ADDITIONAL INFORMATION:** Updates/Changes, etc.

**REMEMBER:** Confirm ETA's of resources ordered. Act according to your level of training. Be Alert. Keep Calm. Think Clearly. Act Decisively.