



Incident Action Plan



Day Operational Period
Thursday
5/10/18
0800-2000



MAPS

Avian Complex
FL-BCP-018031
PPLQ4618 (1502)
FFF2000000LQ460 Fund 18x



IAP

INCIDENT OBJECTIVES	1. Incident Name Avian Complex	2. Date Prepared 5/9/2018	3. Time Prepared 1700
4. Operational Period 5/10/2018 0800 - 2000			
5. General Control Objectives For The Incident <u>Objectives for the Incident:</u> <ul style="list-style-type: none"> • Ensure protection of human life as a top priority, followed by protecting communities and specifically identified facilities within the preserve. • Manage the fire under a strategy commensurate with risk and suppression action utilizing MIST, paying particular attention to Red-Cockaded Woodpecker habitat and Florida Panther den sites. • Provide protection to all private in-holding camps, commercial infrastructure, and limit disruption of landowner access. • Provide initial attack response for all new starts within the Big Cypress National Preserve and Florida Panther National Wildlife Refuge through coordination with the Preserve's Duty Officer. • Provide training opportunities for Preserve, state and federal personnel to strengthen organizational capabilities and complete training assignments. 			
<u>Control Objectives:</u> <ul style="list-style-type: none"> • Provide for point source protection of private land and critical infrastructure in areas that are or will be threatened by the predicted movement of the fires within the Avian Complex. • Limit the Flamingo fire from spreading north of the preserve boundary. • Limit impacts to I-75, US41, Seminole Tribe of Florida and Miccosukee tribal lands. • When possible, use fire management practices that replicate natural fire to the greatest extent. • Coordinate with Everglades National Park on all actions needed with monitoring Curlew Fire. 			
6. Weather forecast for Period Today, high pressure will continue to bring very dry conditions, along with above normal temperatures and afternoon breezes. On Friday, the forecast calls for another round of hot temperatures, but increasing moisture will bring significantly higher humidity. In addition, expect scattered rain showers and isolated afternoon thunderstorms.			
7. General Safety Message Look up, look down, look all around for hazards, recognize them and mitigate them.			
8. ATTACHMENTS (X IF ATTACHED) <input checked="" type="checkbox"/> Organization List - ICS 203 <input checked="" type="checkbox"/> Medical Plan - ICS 206 <input type="checkbox"/> _____ <input checked="" type="checkbox"/> Division Assignment Lists - ICS 204 <input checked="" type="checkbox"/> Incident Maps <input type="checkbox"/> _____ <input checked="" type="checkbox"/> Communications Plan - ICS 205 <input checked="" type="checkbox"/> Traffic Plan <input type="checkbox"/> _____			
9. Prepared By (Planning Section Chief) /s/ Dave Berens		10. Approved By (Incident Commander) /s/ Charlie Patterson (t)	



Fire Weather Forecast

FORECAST NO:	7	NAME OF FIRE:	Avian Complex Fires
PREDICTION FOR:	Thursday Day Shift	UNIT:	Big Cypress National Preserve
SHIFT DATE:	May 10, 2018	Incident Meteorologist:	<i>John Pendergrast / Robert Rickey (7)</i>
FORECAST ISSUED:	1900 May 9, 2018		240-499-6649 623-703-7323

...Near Critical Fire Weather Conditions Again Today...

DISCUSSION: Today, high pressure will continue to bring very dry conditions, along with above normal temperatures and afternoon breezes. On Friday, the forecast calls for another round of hot temperatures, but increasing moisture will bring significantly higher humidity. In addition, expect scattered rain showers and isolated afternoon thunderstorms.

THURSDAY DAY SHIFT:

WEATHER: Partly cloudy with increasing high clouds and a slight chance of afternoon showers.
WIND (20 FT): East-northeast 6 to 11 mph with gusts to 20 mph developing by mid-morning
MAX TEMPERATURES: 89 to 93F
MIN RH: 29%
LAL: 1 Chance measurable rain: 10%
DISPERSION: 68 MAX MIXING HEIGHT: 6800 TRANSPORT WINDS: Northeast 12 to 18 mph

TONIGHT (THURSDAY NIGHT):

WEATHER: Partly cloudy with patchy smoke and fog near fire areas.
WIND (20 FT): East-northeast 6 to 11 mph in the evening, diminishing to 2 to 4 mph late
MIN TEMPERATURES: 64 to 68F
MAX RH: 93 to 98% LVORI 6 (max)
LAL: 1 Chance measurable rain: 10% in the evening, becoming 20% overnight

FRIDAY:

WEATHER: Mostly Cloudy with scattered showers and isolated thunderstorms.
WIND (20 FT): East 6 to 11 mph with gust to 20 mph developing by mid-morning
MAX TEMPERATURES: 87 to 91F
MIN RH: 39%
LAL: 2 Chance measurable rain: 50%
DISPERSION: 55 MAX MIXING HEIGHT: 5500 TRANSPORT WINDS: East 12 to 18 mph

GENERAL OUTLOOK SATURDAY THROUGH MONDAY: Tropical moisture will move into the area on Saturday bringing good chances for showers and thunderstorms each day through at least early next week. Humidity will likely remain above 50 percent with daytime high temperatures in the mid-80s. Expect sustained wind speeds at or below 8 mph with directions switching from the east on Saturday to the south by Monday.



Current Incident
area RAWS
conditions

Sunrise Thursday: 6:42 am EDT
Sunset Thursday: 20:03 pm EDT

Source: US Naval Observatory

FIRE BEHAVIOR FORECAST

FORECAST NUMBER: #7	TYPE OF FIRE: Wildland
FIRE NAME: Avian Complex	OPERATIONAL PERIOD: Thurs 05-10-18
DATE ISSUED: Tues 05-09-18	TIME ISSUED: 1930
UNIT: Big Cypress Preserve	WRITTEN: Kelly Cagle, Fire Behavior Analyst Signed: Kelly Cagle

FUEL ASSUMPTIONS:

3 Fuel Models Involved: Fuel Model 7 (Southern Rough), GR6 (grass model) TU3 (pine w/grass and shrub) TU3 has been the most volatile. GR6 can be extremely active coupled with wind. All 3 Fuel Types are burning readily. Consider all Fuels (even green ones) to be available fuel! Cypress Stringers and recent burn scars are also not retarding fire spread as well as they typically do. Overall – all fuels are critically dry.

Critical Thresholds in South Florida: RH <40 Dispersion > 60 1 hr FM < 6%.
All 3 of these parameters are met or exceeded today!

THURSDAY DAY SHIFT:

WEATHER: Partly cloudy with increasing high clouds and a slight chance of afternoon showers.

WIND (20 FT): East-northeast 6 to 11 mph with gusts to 20 mph developing by mid-morning

MAX TEMPERATURES: 89 to 93F

MIN RH: 29%

LAL: 1 Chance measurable rain: 10%

DISPERSION: 68 MAX **MIXING HEIGHT:** 6800 **TRANSPORT WINDS:** Northeast 12 to 18 mph

General Fire Behavior Forecast: Critical burning conditions today! All factors are in place to support challenging fire behavior today. With the exception of heavy cypress fuels, expect high rates of spread in any pine, shrub or grass fuels. Spread direction will be towards the southwest and could be especially aggressive in timber stringers. Spotting will likely occur today. Surprisingly active backing and flanking fire should be expected as well.

Specific:

Buzzard: Division November/Juliet/Echo will once again be active divisions. Expect continued movement towards the west/ southwest. Runs in timber stringers possible by early afternoon. Favorable fuels exist downwind of known heat that will allow for fire activity similar to what we saw yesterday. IR data indicates heat in Alpha and Zulu, so expect these Divisions to be active with fire movement towards the south and west. Recent burns could be of some help in limiting fire spread in Zulu.

Flamingo: Expect interior burning on the southern side to continue. Where fuels allow, runs towards the southwest could occur as the interior portions of this fire fill in. Expect continued backing towards the east from the flank on the east side.

Curlew: There will likely be at least some active fire movement towards the west and south from the recent activity on the northern side of this fire. There are available fuels to support fire activity and growth, however – the further to the west that fire moves, the higher the likelihood of fire running out of favorable fuels and into less favorable fuel.

Initial Attack: Fuels remain very dry and conducive to rapid buildup. No lightning expected, but if start did occur, expect fire behavior to challenge control efforts, especially in timber or shrub palmetto fuels.

PREDICTIONS FOR MOST ACTIVE TIME OF PEAK BURNING PERIOD

Fuel Model	Fire Behavior
Grass	ROS 35 to 45 ch/hr and 8 to 11' Flame lengths
Shrub (palmetto/southern rough)	ROS 35 to 45 ch/hr and 9 to 12' Flame lengths
Timber Litter w/grass	ROS 40 to 49 ch/hr and 9 to 12' Flame lengths
Spotting Distance	¼ mile possible
Probability of Ignition	66 % all models

AIR OPERATIONS: Little to no inversion expected. Good dispersion index today, so other than smoke, impacts to aviation activities are unlikely today.

FIRE BEHAVIOR SAFETY: Watch Out Situation # 12 – Cannot see main fire, not in contact with someone who can. Vegetation at Big Cypress makes it hard to see the main fire. Ensure that you have communication with someone (air attack) that can.

Division/Group Assignment List (ICS 204 WF)

1. Incident Name:				3.				
Avian Complex				Branch: I		Division/Group BB FLAMINGO		
2. Operational Period:								
Date/Time From: 5/10/2018 0800		Date/Time To: 5/10/2018 2000						
4. Operations Personnel								
BRANCH DIRECTOR		Bruce Malloy 5/22 O-169		FIELD OPERATIONS		Mike Davis 5/17 O-1.7		
DIVISION/GROUP SUPERVISOR		Greg Salansky 5/21 O-110		LEAD OPERATIONS PLANNING OPERATIONS		Jeff Schardt 5/17 O-1.8 Tommy Hawkins 5/17 O-49		
5. Resources Assigned this Period								
Strike Team / Task Force / Resource Designator			LWD	Leader		Number Persons	Drop Off PT./Time	Pick Up PT./Time
ENG T6 Wildlands Fire			E-122 5/20	Brian Terry		3	0800	2000
ENG T6 Wildlands Fire			E-124 5/20	Jim Garrison		3	0800	2000
SOFR			O-129 5/18	Matt Castellon		1	0800	2000
EMTF			O-18 5/18	Shawn Valentine		1	0800	2000
6. Control Operations/Work Assignments:								
Task:								
<ul style="list-style-type: none"> Coordinate suppression operations with local jurisdictions trying to prevent fire spread to state/private jurisdictions. Use minimal impact suppression tactics when possible and appropriate. 								
Purpose:								
<ul style="list-style-type: none"> Minimize negative impacts to private property and natural resources. 								
End State:								
<ul style="list-style-type: none"> Fire contained on federal lands with minimal impacts to natural systems. 								
7. Special Instructions:								
<ul style="list-style-type: none"> Follow tracked vehicle requirement restrictions. Establish and maintain LCES during operational period. Document work done to protect cabins by taking before and after pictures of the camp structures. Document lat/long and brief description of the actions taken on a ICS-213. Send all information to: avianfinancecomplex@gmail.com. Document damages to cabins or infrastructure by with photos and details on a ICS 213. Send all information to: avianfinancecomplex@gmail.com. If medical hoist ship is needed , request through "784" (law dispatch) on BICY CMD channel 								
8. Division/Group Communication Summary								
Function	Channel	RX Frequency N/W	RXTone/NAC	TX Frequency N/W	TX Tone/NAC	Mode		
COMMAND	7	169.650N	677	166.375N	677	D		
TACTICAL	4	168.600N	0	168.600N	0	A		
AIR TO GROUND	10	168.325N	0	168.325N	0	A		
9. Prepared By (Resource Unit Leader)			Approved By (Planning Section Chief)			Date	Time	
/s/Melonie Sellers/Carol O'Bryan/Vince Carver			Dave Berens/Donald Watson/James Ehrlich (t)			5/9/2018	16:00	

Division/Group Assignment List (ICS 204 WF)

1. Incident Name:				3.					
Avian Complex				Branch: I		Division/Group OO FLAMINGO			
2. Operational Period:									
Date/Time From: 5/10/2018 0800		Date/Time To: 5/10/2018 2000							
4. Operations Personnel									
BRANCH DIRECTOR		Bruce Malloy 5/22 O-169		FIELD OPERATIONS		Mike Davis 5/17 O-1.7			
DIVISION/GROUP SUPERVISOR		Heath Thomas 5/17 O-1.12		LEAD OPERATIONS		Jeff Schardt 5/17 O-1.8			
		Steven Thime (t) 5/17 O-37		PLANNIN OPERATIONS		Tommy Hawkins 5/17 O-49			
5. Resources Assigned this Period									
Strike Team / Task Force / Resource Designator			LWD	Leader		Number Persons	Drop Off PT./Time	Pick Up PT./Time	
TFLD O-202			5/21	Mike Cobb		1	0800	2000	
TFLD(t) O-43			5/17	Doug Redding		1	0800	2000	
HEQB O-44			5/17	Clint Davis		1	0800	2000	
T2IA Arkansas BIA C-3			5/21	Scotty Kopepassah		20	0800	2000	
ENG T6 Wildlands Fire E-123			5/20	Saul Irvin		3	0800	2000	
ENG T6 Attack One E-11			5/19	John Hoellerich		2	0800	2000	
MAST FL-509 E-18			5/18	Marty Scott O-168		1	0800	2000	
MAST FL-409 E-19			5/19	John Craig O-170		1	0800	2000	
UTV Rental E-104						0			
SOFR O-129			5/18	Matt Castellon		1	0800	2000	
EMTF O-18			5/18	Shawn Valentine		1	0800	2000	
6. Control Operations/Work Assignments:									
Task:									
<ul style="list-style-type: none"> Patrol and monitor fire with aviation and ground assets. Masticate Bundschu Grade in coordination with Resource Advisor. Use minimal impact suppression tactics when possible and appropriate. 									
Purpose:									
<ul style="list-style-type: none"> Limit fire spread east of Bundschu Grade and north of Interstate 75. Minimize negative impacts to private property and natural resources. 									
End State:									
<ul style="list-style-type: none"> Fire contained west of Bunschu Grade and south of HWY 75 with minimal impacts to natural systems. 									
7. Special Instructions:									
<ul style="list-style-type: none"> Follow tracked vehicle requirement restrictions. Establish and maintain LCES during operational period. Document work done to protect cabins by taking before and after pictures of the camp structures. Document lat/long and brief description of the actions taken on a ICS-213. Send all information to: avianfinancecomplex@gmail.com. Document damages to cabins or infrastructure by with photos and details on a ICS 213. Send all information to: avianfinancecomplex@gmail.com. If medical hoist ship is needed , request through "784" (law dispatch) on BICY CMD channel 									
8. Division/Group Communication Summary									
Function	Channel	RX Frequency N/W	RXTone/NAC	TX Frequency N/W	TX Tone/NAC	Mode			
COMMAND	7	169.650N	677	166.375N	677	D			
TACTICAL	5	168.250N	0	168.250N	0	A			
AIR TO GROUND	10	168.325N	0	168.325N	0	A			
9. Prepared By (Resource Unit Leader)			Approved By (Planning Section Chief)			Date		Time	
/s/Melonie Sellers/Carol O'Bryan/Vince Carver			Dave Berens/Donald Watson/James Ehrlich (t)			5/9/2018		16:00	

Division/Group Assignment List (ICS 204 WF)

1. Incident Name:				3.				
Avian Complex				Branch: I		Division/Group RR FLAMINGO		
2. Operational Period:								
Date/Time From: 5/10/2018 0800		Date/Time To: 5/10/2018 2000						
4. Operations Personnel								
BRANCH DIRECTOR		Bruce Malloy	5/22	O-169	FIELD OPERATIONS		Mike Davis 5/17 O-1.7	
DIVISION/GROUP SUPERVISOR		Matt Johnson	5/17	O-1.11	LEAD OPERATIONS		Jeff Schardt 5/17 O-1.8	
		Alan Kirby (t)	5/17	O-31	PLANNING OPERATIONS		Tommy Hawkins 5/17 O-49	
5. Resources Assigned this Period								
Strike Team / Task Force / Resource Designator			LWD	Leader		Number Persons	Drop Off PT./Time	Pick Up PT./Time
TFLD			O-195	5/21	Robert Nix	1	0800	2000
ENG T6 Wildlands			E-165	5/21	Dusty Krebsbach	3	0800	2000
SOFR			O-129	5/18	Matt Castellon	1	0800	2000
EMTF			O-18	5/18	Shawn Valentine	1	0800	2000
6. Control Operations/Work Assignments:								
Task:								
<ul style="list-style-type: none"> Assess and prep critical infrastructure. Use strategic firing operations to secure values at risk in coordination with Branch and adjacent recourses. Scout and communicate potential containment opportunities. 								
Purpose:								
<ul style="list-style-type: none"> Minimize negative impacts to infrastructure and private property and identify containment opportunities that are both efficient and have a high probability of success. 								
End State:								
<ul style="list-style-type: none"> Fire contained on defensible lines with minimal to no impact on local communities. 								
7. Special Instructions:								
<ul style="list-style-type: none"> Follow tracked vehicle requirement restrictions. Establish and maintain LCES during operational period. Document work done to protect cabins by taking before and after pictures of the camp structures. Document lat/long and brief description of the actions taken on a ICS-213. Send all information to: avianfinancecomplex@gmail.com Document damages to cabins or infrastructure by with photos and details on a ICS 213. Send all information to: avianfinancecomplex@gmail.com If medical hoist ship is needed , request through "784" (law dispatch) on BICY CMD channel 								
8. Division/Group Communication Summary								
Function	Channel	RX Frequency N/W	RXTone/NAC	TX Frequency N/W	TX Tone/NAC	Mode		
COMMAND	7	169.650N	677	166.375N	677	D		
TACTICAL	8	166.750N	0	166.750N	0	A		
AIR TO GROUND	10	168.325N	0	168.325N	0	A		
9. Prepared By (Resource Unit Leader)		Approved By (Planning Section Chief)				Date	Time	
/s/Melonie Sellers/Carol O'Bryan/Vince Carver		Dave Berens/Donald Watson/James Ehrlich (t)				5/9/2018	16:00	

Division/Group Assignment List (ICS 204 WF)

1. Incident Name:				3.					
Avian Complex				Branch: II		Division/Group A BUZZARD			
2. Operational Period:									
Date/Time From: 5/10/2018 0800		Date/Time To: 5/10/2018 2000							
4. Operations Personnel									
BRANCH DIRECTOR		Mike White 5/18 O-22		FIELD OPERATIONS		Mike Davis 5/17 O-1.7			
DIVISION/GROUP SUPERVISOR		Logan McCrae 5/17 O-26		LEAD OPERATIONS		Jeff Schardt 5/17 O-1.8			
				PLANNING OPERATIONS		Tommy Hawkins 5/17 O-49			
5. Resources Assigned this Period									
Strike Team / Task Force / Resource Designator			LWD	Leader		Number Persons	Drop Off PT./Time	Pick Up PT./Time	
TFLD			O-33	5/17	Hans Rudolf		1	0800	2000
TFLD (t)			O-82.3	5/24	Shane Morey (R&R 5/9-5/10)		1	0800	2000
T2IA PR#4 Mod #1			C-4	5/21	Elvis Aguiar		10	0800	2000
T2IA PR#2 Mod #3			C-2	5/16				0800	2000
MOD Buffalo River Module			O-66	5/24	Josh Hampton (R&R 5/9-5/10)		2	0800	2000
BUGGY LEO			E-36	local	TBD			0800	2000
BUGGY RT-22			E-35	local	TBD			0800	2000
BUGGY Sem 79			E-40	5/11	Mike Lightsey		2	0800	2000
SOFR			O-131	5/19	Andy Murrin		1	0800	2000
EMTF			O-122	5/10	Aaron Marshall		1	0800	2000
EMPF			O-218	5/23	Mike Worcester		1	0800	2000
6. Control Operations/Work Assignments:									
Task:									
<ul style="list-style-type: none"> Assess and prep critical infrastructure. Use strategic firing operations to secure values at risk in coordination with Branch and adjacent recourses. Scout and communicate potential containment opportunities. 									
Purpose:									
<ul style="list-style-type: none"> Minimize negative impacts to infrastructure and private property and identify containment opportunities that are both efficient and have a high probability of success. 									
End State:									
<ul style="list-style-type: none"> Fire contained on defensible lines with minimal to no impact on local communities. 									
7. Special Instructions:									
<ul style="list-style-type: none"> Follow tracked vehicle requirement restrictions. Establish and maintain LCES during operational period. Document work done to protect cabins by taking before and after pictures of the camp structures. Document lat/long and brief description of the actions taken on a ICS-213. Send all information to: avianfinancecomplex@gmail.com Document damages to cabins or infrastructure by with photos and details on a ICS 213. Send all information to: avianfinancecomplex@gmail.com If medical hoist ship is needed , request through "784" (law dispatch) on BICY CMD channel 									
8. Division/Group Communication Summary									
Function	Channel	RX Frequency N/W	RXTone/NAC	TX Frequency N/W	TX Tone/NAC	Mode			
COMMAND	2	172.425N	1035	171.625N	1035	D			
TACTICAL	4	168.600N	0	168.600N	0	A			
AIR TO GROUND	6	169.1125N	0	169.1125N	0	A			
9. Prepared By (Resource Unit Leader)			Approved By (Planning Section Chief)			Date		Time	
/s/Melonie Sellers/Carol O'Bryan/Vince Carver			Dave Berens/Donald Watson/James Ehrlich (t)			5/9/2018		16:00	

Division/Group Assignment List (ICS 204 WF)

1. Incident Name:				3.				
Avian Complex				Branch:		Division/Group		
2. Operational Period:						C		
Date/Time From: 5/10/2018 0800		Date/Time To: 5/10/2018 2000		BUZZARD				
4. Operations Personnel								
BRANCH DIRECTOR		Mike White 5/18 O-22		FIELD OPERATIONS		Mike Davis 5/17 O-1.7		
DIVISION/GROUP SUPERVISOR		Josh Wright 5/18 O-47		LEAD OPERATIONS		Jeff Schardt 5/17 O-1.8		
				PLANNING OPERATIONS		Tommy Hawkins 5/17 O-49		
5. Resources Assigned this Period								
Strike Team / Task Force / Resource Designator			LWD	Leader		Number Persons	Drop Off PT./Time	Pick Up PT./Time
TFLD			O-32 5/18	Adam Booth		1	0800	2000
TFLD(t)			O-157 5/19	Joe Brinson		1	0800	2000
ENG T6	Fire Trax		E-13 5/18	Steve Bennett		3	0800	2000
ENG T6	Attack One		E-128 5/20	David Knowles		2	0800	2000
BUGGY	Transport		E-102 Local	Captain Steve -Victor		1	0800	2000
SOF2			O-186 5/11	Galen Young		1	0800	2000
EMTF			O-19 5/18	Tony Ortiz		1	0800	2000
6. Control Operations/Work Assignments:								
Task:								
<ul style="list-style-type: none"> Assess and prep critical infrastructure focusing on utilities along HWY 41. Use strategic firing operations to secure in coordination with Branch and adjacent resources. Scout and communicate potential containment opportunities. 								
Purpose:								
<ul style="list-style-type: none"> Minimize negative impacts to infrastructure and private property and identify containment opportunities that are both efficient and have a high probability of success. 								
End State:								
<ul style="list-style-type: none"> Fire contained on defensible lines with minimal to no impact on local communities. 								
7. Special Instructions:								
<ul style="list-style-type: none"> Follow tracked vehicle requirement restrictions. Establish and maintain LCES during operational period. Document work done to protect cabins by taking before and after pictures of the camp structures. Document lat/long and brief description of the actions taken on a ICS-213. Send all information to: avianfinancecomplex@gmail.com Document damages to cabins or infrastructure by with photos and details on a ICS 213. Send all information to: avianfinancecomplex@gmail.com If medical hoist ship is needed , request through "784" (law dispatch) on BICY CMD channel 								
8. Division/Group Communication Summary								
Function	Channel		RX Frequency N/W	RXTone/NAC	TX Frequency N/W	TX Tone/NAC	Mode	
COMMAND	2		172.425N	1035	171.625N	1035	D	
TACTICAL	4		168.600N	0	168.600N	0	A	
AIR TO GROUND	6		169.1125N	0	169.1125N	0	A	
9. Prepared By (Resource Unit Leader)			Approved By (Planning Section Chief)			Date	Time	
/s/Melonie Sellers/Carol O'Bryan/Vince Carver			Dave Berens/Donald Watson/James Ehrlich (t)			5/9/2018	16:00	

Division/Group Assignment List (ICS 204 WF)

1. Incident Name:				3.				
Avian Complex				Branch: II		Division/Group E BUZZARD		
2. Operational Period:								
Date/Time From: 5/10/2018 0800		Date/Time To: 5/10/2018 2000						
4. Operations Personnel								
BRANCH DIRECTOR		Mike White 5/18 O-22		FIELD OPERATIONS		Mike Davis 5/17 O-1.7		
DIVISION/GROUP SUPERVISOR		Kris Schroeder 5/18 O-25		LEAD OPERATIONS		Jeff Schardt 5/17 O-1.8		
		Bernie Guthrie (t) 5/18 O-58		PLANNING OPERATIONS		Tommy Hawkins 5/17 O-49		
5. Resources Assigned this Period								
Strike Team / Task Force / Resource Designator			LWD	Leader		Number Persons	Drop Off PT./Time	Pick Up PT./Time
ENG T6	Wildland Services E-12		5/19	David Hogrefe		3	0800	2000
ENG T6	Southeast Forest E-127		5/20	Steven Guckian		3	0800	2000
BUGGY	Transport E-99		local	Captain Steve -Bobby		1	0800	2000
STPS O-188			5/20	Glen Phillips		1	0800	2000
SOF2 O-186			5/11	Galen Young		1	0800	2000
EMTF E-19			5/18	Tony Ortiz		1	0800	2000
6. Control Operations/Work Assignments:								
Task:								
<ul style="list-style-type: none"> Assess and prep critical infrastructure and private structures along Turner River Rd. Use strategic firing operations to secure in coordination with Branch and adjacent resources. Scout and communicate potential containment opportunities east of HWY 29. 								
Purpose:								
<ul style="list-style-type: none"> Minimize negative impacts to infrastructure and private property and identify containment opportunities that are both efficient and have a high probability of success and keep the fire east of HWY 29. 								
End State:								
<ul style="list-style-type: none"> Fire contained east of Turner River Rd on defensible lines with minimal to no impact on local communities. 								
7. Special Instructions:								
<ul style="list-style-type: none"> Follow tracked vehicle requirement restrictions. Establish and maintain LCES during operational period. Document work done to protect cabins by taking before and after pictures of the camp structures. Document lat/long and brief description of the actions taken on a ICS-213. Send all information to: avianfinancecomplex@gmail.com. Document damages to cabins or infrastructure by with photos and details on a ICS 213. Send all information to: avianfinancecomplex@gmail.com. In conjunction with Liaison, work with Tribal representatives to prioritize workload under their jurisdiction. If medical hoist ship is needed , request through "784" (law dispatch) on BICY CMD channel 								
8. Division/Group Communication Summary								
Function	Channel		RX Frequency N/W	RXTone/NAC	TX Frequency N/W	TX Tone/NAC	Mode	
COMMAND	2		172.425N	1035	171.625N	1035	D	
TACTICAL	4		168.600N	0	168.600N	0	A	
AIR TO GROUND	6		169.1125N	0	169.1125N	0	A	
9. Prepared By (Resource Unit Leader)			Approved By (Planning Section Chief)			Date	Time	
/s/Melonie Sellers/Carol O'Bryan/Vince Carver			Dave Berens/Donald Watson/James Ehrlich (t)			5/9/2018	16:00	

Division/Group Assignment List (ICS 204 WF)

1. Incident Name:				3.				
Avian Complex				Branch: II		Division/Group J BUZZARD		
2. Operational Period:								
Date/Time From: 5/10/2018 0800		Date/Time To: 5/10/2018 2000						
4. Operations Personnel								
BRANCH DIRECTOR		Mike White 5/18 O-22		FIELD OPERATIONS		Mike Davis 5/17 O-1.7		
DIVISION/GROUP SUPERVISOR		Brad Rafeedy 5/17 O-27		LEAD OPERATIONS		Jeff Schardt 5/17 O-1.8		
				PLANNING OPERATIONS		Tommy Hawkins 5/17 O-49		
5. Resources Assigned this Period								
Strike Team / Task Force / Resource Designator			LWD	Leader		Number Persons	Drop Off PT./Time	Pick Up PT./Time
ENG T6	Lowends	E-22	5/10	Jim Durrance		2	0800	2000
BUGGY	Sem 29	E-113	5/11	Dane Martin		2	0800	2000
UTV	Smokey Module	E-57	5/13	Sara Martinez	O-82.5	2	0800	2000
SOF2		O-192	5/21	Opie Blackwell		1	0800	2000
EMTF		O-21	5/18	Bob Bruington		1	0800	2000
6. Control Operations/Work Assignments:								
Task:								
<ul style="list-style-type: none"> Assess and prep critical infrastructure. Use strategic firing operations to secure in coordination with Branch and adjacent recourses. Scout and communicate potential containment opportunities. 								
Purpose:								
<ul style="list-style-type: none"> Minimize negative impacts to infrastructure and private property and identify containment opportunities that are both efficient and have a high probability of success. 								
End State:								
<ul style="list-style-type: none"> Fire contained on defensible lines with minimal to no impact on local communities. 								
7. Special Instructions:								
<ul style="list-style-type: none"> Follow tracked vehicle requirement restrictions. Establish and maintain LCES during operational period. Document work done to protect cabins by taking before and after pictures of the camp structures. Document lat/long and brief description of the actions taken on a ICS-213. Send all information to: avianfinancecomplex@gmail.com. Document damages to cabins or infrastructure by with photos and details on a ICS 213. Send all information to: avianfinancecomplex@gmail.com. If medical hoist ship is needed , request through "784" (law dispatch) on BICY CMD channel 								
8. Division/Group Communication Summary								
Function	Channel	RX Frequency N/W	RXTone/NAC	TX Frequency N/W	TX Tone/NAC	Mode		
COMMAND	2	172.425N	1035	171.625N	1035	D		
TACTICAL	5	168.250N	0	168.250N	0	A		
AIR TO GROUND	6	169.1125N	0	169.1125N	0	A		
9. Prepared By (Resource Unit Leader)		Approved By (Planning Section Chief)				Date	Time	
/s/Melonie Sellers/Carol O'Bryan/Vince Carver		Dave Berens/Donald Watson/James Ehrlich (t)				5/9/2018	16:00	

Division/Group Assignment List (ICS 204 WF)

1. Incident Name:				3.			
Avian Complex				Branch: II		Division/Group N BUZZARD	
2. Operational Period:							
Date/Time From: 5/10/2018 0800		Date/Time To: 5/10/2018 2000					
4. Operations Personnel							
BRANCH DIRECTOR		Mike White 5/18 O-22		FIELD OPERATIONS		Mike Davis 5/17 O-1.7	
DIVISION/GROUP SUPERVISOR		Jon Dentinger 5/18 O-45		LEAD OPERATIONS		Jeff Schardt 5/17 O-1.8	
		Adam Kunce (t) 5/10 O-117		PLANNING OPERATIONS		Tommy Hawkins 5/17 O-49	
5. Resources Assigned this Period							
Strike Team / Task Force / Resource Designator			LWD	Leader	Number Persons	Drop Off PT./Time	Pick Up PT./Time
TFLD O-36			5/17	Shane Feightner	1	0800	2000
TFLD O-109			Local	Chris Richards	1	0800	2000
T2IA PR#4 Mod 2 C-4			5/21	Luis Saez	10	0800	2000
Buggy Slimer E-39			Local	Conner Bowden 5/20	2	0800	2000
Buggy Maverick E-			Local	Jordan Mallory 5/15	2	0800	2000
UTV #4 E-178			Local	TBD	0	0800	2000
UTV Panther #2 E-47			Local	TBD	0	0800	2000
SOF2 O-192			5/21	Opie Blackwell	1	0800	2000
EMTF O-200			5/18	John Dunzweiler	1	0800	2000
6. Control Operations/Work Assignments:							
Task:							
<ul style="list-style-type: none"> Assess and prep critical infrastructure. Use strategic firing operations to secure values at risk in coordination with Branch and adjacent recourses. Scout and communicate potential containment opportunities. 							
Purpose:							
<ul style="list-style-type: none"> Minimize negative impacts to infrastructure and private property and identify containment opportunities that are both efficient and have a high probability of success. 							
End State:							
<ul style="list-style-type: none"> Fire contained on defensible lines with minimal to no impact on local communities. 							
7. Special Instructions:							
<ul style="list-style-type: none"> Follow tracked vehicle requirement restrictions. Establish and maintain LCES during operational period. Document work done to protect cabins by taking before and after pictures of the camp structures. Document lat/long and brief description of the actions taken on a ICS-213. Send all information to: avianfinancecomplex@gmail.com. Document damages to cabins or infrastructure by with photos and details on a ICS 213. Send all information to: avianfinancecomplex@gmail.com. If medical hoist ship is needed , request through "784" (law dispatch) on BICY CMD channel 							
8. Division/Group Communication Summary							
Function	Channel	RX Frequency N/W	RXTone/NAC	TX Frequency N/W	TX Tone/NAC	Mode	
COMMAND	2	172.425N	1035	171.625N	1035	D	
TACTICAL	8	166.750N	0	166.750N	0	A	
AIR TO GROUND	6	169.1125N	0	169.1125N	0	A	
9. Prepared By (Resource Unit Leader)			Approved By (Planning Section Chief)			Date	
/s/Melonie Sellers/Carol O'Bryan/Vince Carver			Dave Berens/Donald Watson/James Ehrlich (t)			5/9/2018	
						Time	
						16:00	

Division/Group Assignment List (ICS 204 WF)

1. Incident Name:				3.						
Avian Complex				Branch: II		Division/Group T / V / Z BUZZARD				
2. Operational Period:										
Date/Time From: 5/10/2018 0800		Date/Time To: 5/10/2018 2000								
4. Operations Personnel										
BRANCH DIRECTOR		Mike White		5/18		O-22				
FIELD OPERATIONS		Mike Davis		5/17		O-1.7				
DIVISION/GROUP SUPERVISOR		Ron Calhoun		5/12		O-114				
LEAD OPERATIONS		Jeff Schardt		5/17		O-1.8				
PLANNING OPERATIONS		Tommy Hawkins		5/17		O-49				
5. Resources Assigned this Period										
Strike Team / Task Force / Resource Designator			LWD	Leader			Number Persons	Drop Off PT./Time	Pick Up PT./Time	
TFLD			O-35	5/18	Aaron Grey			1	0800	2000
ENG T6 Wildlands Fire			E-126	5/20	Buddy Wood			3	0800	2000
BUGGY Transport			E-100	Local	Captain Steve -Careless			1	0800	2000
BUGGY Transport			E-101	Local	Captain Steve -Ralph			1	0800	2000
SOF2			O-193	5/22	Fred Johnson			1	0800	2000
6. Control Operations/Work Assignments:										
Control Operations/Work Assignments:										
Task:										
<ul style="list-style-type: none"> Assess and prep critical infrastructure. Use strategic firing operations to secure values at risk and prevent fire spread east of preserve boundary. Coordinate activities with Branch and adjacent recourses. 										
Purpose:										
<ul style="list-style-type: none"> Minimize negative impacts to infrastructure and private property and identify containment opportunities that are efficient, have a high probability of success and keep fire on the preserve. 										
End State:										
<ul style="list-style-type: none"> Fire contained the preserve with defensible lines and minimal to no impact on local communities. 										
7. Special Instructions										
<ul style="list-style-type: none"> Follow tracked vehicle requirement restrictions. Establish and maintain LCES during operational period. Document work done to protect cabins by taking before and after pictures of the camp structures. Document lat/long and brief description of the actions taken on a ICS-213. Send all information to: avianfinancecomplex@gmail.com. Document damages to cabins or infrastructure by with photos and details on a ICS 213. Send all information to: avianfinancecomplex@gmail.com. If medical hoist ship is needed , request through "784" (law dispatch) on BICY CMD channel 										
8. Division/Group Communication Summary										
Function		Channel		RX Frequency N/W	RXTone/NAC	TX Frequency N/W	TX Tone/NAC	Mode		
COMMAND		2		172.425N	1035	171.625N	1035	D		
TACTICAL		9		166.825N	0	166.825N	0	A		
AIR TO GROUND		6		169.1125N	0	169.1125N	0	A		
9. Prepared By (Resource Unit Leader)				Approved By (Planning Section Chief)				Date		Time
/s/Melonie Sellers/Carol O'Bryan/Vince Carver				Dave Berens/Donald Watson/James Ehrlich (t)				5/9/2018		16:00

Division/Group Assignment List (ICS 204 WF)

1. Incident Name:				3.				
Avian Complex				Branch: III		Division/Group Curlew		
2. Operational Period:								
Date/Time From: 5/10/2018 0800		Date/Time To: 5/10/2018 2000						
4. Operations Personnel								
				FIELD OPERATIONS		Mike Davis		
DIVISION/GROUP SUPERVISOR		Sammy Mcfarland O-24 5/21 Kendall Carpenter (t) O-48 5/21		LEAD OPERATIONS PLANNING OPERATIONS		Jeff Schardt Tommy Hawkins		
5. Resources Assigned this Period								
Strike Team / Task Force / Resource Designator			LWD	Leader		Number Persons	Drop Off PT./Time	Pick Up PT./Time
MOD	OR-JC#1	O-163	5/22	Jason Monroe		8	0800	2000
ENG T6	OK-TLA 0961	E-131	5/21	Raymond Ludlow		2	0800	2000
ENG T6	Griffith 104719	E-130	5/22	Billy Griffith		3	0800	2000
6. Control Operations/Work Assignments:								
Control Operations:								
Task:								
<ul style="list-style-type: none"> • Take suppression actions to keep fire south of Loop Rd, west of Redbird Lane, west Buckhalt Camp and Kirby Sorter Roadside Park • Assess and prep critical infrastructure. Use strategic firing operations to secure values at risk in coordination with Branch and adjacent recourses. • Coordinate suppression operation with Everglades NP to ensure protection of cultural and natural resources. 								
Purpose:								
<ul style="list-style-type: none"> • Protect human life and minimize damage to private and public property • Manage undesirable impacts to federal lands through the appropriate strategy and minimal impact suppression tactics. 								
End State:								
<ul style="list-style-type: none"> • Protect private property and critical infrastructure within the fire perimeter. • Minimize undesirable impacts to natural/cultural resources. 								
7. Special Instructions:								
<ul style="list-style-type: none"> • If medical hoist ship is needed , request through "784" (law dispatch) on BICY CMD channel 								
8. Division/Group Communication Summary								
Function	Channel		RX Frequency N/W	RXTone/NAC	TX Frequency N/W	TX Tone/NAC	Mode	
COMMAND	2		172.425N	1035	171.625N	1035	D	
TACTICAL	5		168.250N	0	168.250N	0	A	
AIR TO GROUND	12		169.150N	0	168.150N	0	A	
9. Prepared By (Resource Unit Leader)			Approved By (Planning Section Chief)			Date	Time	
/s/Melonie Sellers/Carol O'Bryan/Vince Carver			Dave Berens/Donald Watson/James Ehrlich (t)			5/9/2018	16:00	

Division/Group Assignment List (ICS 204 WF)

1. Incident Name:				3.						
Avian Complex				Branch:		Division/Group				
2. Operational Period:				IA # 1						
Date/Time From: 5/10/2018 0800		Date/Time To: 5/10/2018 2000								
4. Operations Personnel										
				FIELD OPERATIONS		Mike Davis	5/17	O-1.7		
DIVISION/GROUP SUPERVISOR		Byron Hart		5/17	O-46	LEAD OPERATIONS		Jeff Schardt	5/17	O-1.8
		Paul Ryan (t)		5/19	O-158	PLANNING OPERATIONS		Tommy Hawkins	5/17	O-49
5. Resources Assigned this Period										
Strike Team / Task Force / Resource Designator			LWD	Leader		Number Persons	Drop Off PT./Time	Pick Up PT./Time		
TFLD			O-34	5/17	Todd Milam		1	Monroe Station / 0800	Monroe Station / 2000	
TFLD			O-126	5/16	Robert Vick		1	Monroe Station / 0800	Monroe Station / 2000	
TFLD(t)			O-156	5/19	Jennifer Anderson		1	Monroe Station / 0800	Monroe Station / 2000	
ENG T6	Cook 86		E-9	5/19	Lee Weaver		2	Monroe Station / 0800	Monroe Station / 2000	
ENG T6	Lanier 86		E-10	5/18	Thomas Whitley		2	Monroe Station / 0800	Monroe Station / 2000	
BUGGY	#1		E-43	local	Mindy Wright	5/12	3	Monroe Station / 0800	Monroe Station / 2000	
BUGGY	Transport		E-98	local	Captain Steve		1	Monroe Station / 0800	Monroe Station / 2000	
SOFR			O-128	5/18	Damon Nelson		1	Monroe Station / 0800	Monroe Station / 2000	
EMTF			O-20	5/18	Jeff Cummings		1	Monroe Station / 0800	Monroe Station / 2000	
6. Control Operations/Work Assignments:										
Task:										
<ul style="list-style-type: none"> Provide resources for initial attack within the Big Cypress National Preserve, and the Florida Panther National Wildlife Refuge, and predesignated 1 mile mutual aide initial attack response area. 										
Purpose:										
<ul style="list-style-type: none"> Contain all new fires to the smallest extent possible while emphasizing for fire fighter safety. Use appropriate strategies and tactics that have the highest probability of success. 										
End State:										
<ul style="list-style-type: none"> Contain new fires within constraints directed by the BICY duty officer. 										
7. Special Instructions:										
<ul style="list-style-type: none"> Follow tracked vehicle requirement restrictions. Establish and maintain LCES during operational period. Normal shift 0800 – 2000 unless initial attack or extended staffing is required. Mitigate 2:1 as soon as possible. If medical hoist ship is needed , request through "784" (law dispatch) on BICY CMD channel 										
8. Division/Group Communication Summary										
Function	Channel			RX Frequency N/W	RXTone/N AC	TX Frequency N/W	TX Tone/NAC	Mode		
COMMAND	2			172.425N	1035	171.625N	1035	D		
TACTICAL	11			168.050N	0	168.050N	0	A		
AIR TO GROUND	3			166.6125N	0	166.6125N	0	A		
9. Prepared By (Resource Unit Leader)				Approved By (Planning Section Chief)				Date	Time	
/s/Melonie Sellers/Carol O'Bryan/Vince Carver				Dave Berens/Donald Watson/James Ehrlich (t)				5/9/2018	16:00	

AIR OPERATIONS SUMMARY

OPERATIONAL PERIOD DATE: 05-10-2018

0900-2000

1. INCIDENT NAME: Avian Complex	2. PREPARED BY: Peter Kubiak PREPARED DATE/TIME: 05/09/2018 1730	3. Sunrise: 0644 Sunset: 2003
<p>4. REMARKS (Safety Notes, Hazards, Air Operations Special Equipment,, etc.): Medivac Aircraft: 40MA If hoist helicopter is needed for life threatening situation announce 784 on BICY command frequency. Give lat/long and ground contact.</p> <p>MTR- Located along state road 29.Fire Dispatch gets MTR activity every morning Do not over fly structures with external load missions. All aircraft should use strobes and running lights in smoky conditions. Hazards: Snags, non-incident aircraft, and winds. Contract helicopters working in seismic project area located south of I-75 in north central portion of Preserve.</p>		<p>5. Squawk 1255</p> <p>Flamingo Fire TFR 8/0703 up to 3000' MSL, Frequency 119.5750, expires 06/01/18</p> <p>Buzzard Fire TFR-8/0704 up to 3000' MSL Frequency 119.5750, expires 06/01/18</p>

6. PERSONNEL	Phone	7. FREQUENCIES	AM	FM	8. FIXEDWING	Base
AOBD: Pete Kubiak O-1.13 ASGS: Mike Rock O-1.14	404-661-4819 606-813-9750	A/A primary rotor A/A secondary rotor A/A primary Fixed Wing A/A secondary FW	119.2500 123.9500 119.5750 124.0750		Air Attack- Air Attack Air Attack	N5ER Cessna 303 (Rucker) N420Q Kodiak 100 (Corley) N690JK (Williams)
Mike O'Leary BICY Aviation Officer ATGS: Matt Corley ATGS -Ron Rucker ATGS- Danny Williams / B.Corbitt (t)	907-328-0985 435-669-6869 541-550-6223	A/G Flamingo (85) A/G Buzzard(59) A/G IA A/G Curlew		168.3250 RX/TX 169.1125 RX/TX 166.6125 RX/TX 169.1500RX/TX	T-801 T-842 T-493	Seat -IMM, Start 0900 Seat -IMM, Start 0900 Seat-IMM, Start 0900
Oasis Helibase (9FL7) HEB1 John Bragg O-1.47 Immokalee Airport IMM Seat Manager - Sidney Brown O-59 Seat Manager - Kevin Carter	423-483-2798 239-707-1442 512-940-4050	Flight Following (BICY)		169.7250 RX N1514 163.3875 TX N1738		
Big Cypress Fire Dispatch	239-695-9280 x 104	Air/Guard Deck		168.6250 RX/TX Tone 110.9 163.1000		

9. HELICOPTERS (Use Additional Sheets As Necessary)

FAA N# or Designator	TY	MAKE/MODEL	BASE	START	REMARKS	FAA N# or Designator	TY	MAKE/MODEL	BASE	START	REMARKS
N7HE	3	AS 350 B3	Oasis	0900		137BH	1	S-70A-27	Oasis	0900	
40MA	3	Bell 407	Oasis	0900		715HT	1	CH-54B	Oasis	0900	SkyCrane
743PH	3	Bell 407	Oasis	0900		9FH	1	UH-60A	Oasis	0900	
17HX	2	205A- 1 ++	Oasis	0900							

10. TASK/MISSION/ASSIGNMENT (Use ICS-220a if additional space needed; Type/Function includes: Air Tactical, Retardant, Recon, Personnel Transport, Water Dropping, etc.)

TYPE/FUNCTION	NAME OF PERSONNEL OR CARGO (if applicable) OR INSTRUCTIONS FOR TACTICAL AIRCRAFT	MISSION START	FLY FROM	FLY TO
Mapping	As Requested	0930		
Reconnaissance	As Requested	0930		
Water Drops	As Requested	0930		

HEALTH AND SAFETY MESSAGE

SAFETY is YOU & ME

We are ALL accountable for SAFE behaviors

INCIDENT: Avian Complex

DATE: May 10, 2018

Major Hazards and Risks: Aviation, Driving, Inaccessible Country and Visitors

Aviation - Everyone has a role in safe aircraft operations on this incident. Request one if the mission requires it. If you are on the ground, be ready to communicate with the pilot and be sure the area is clear for bucket drops. Everyone keep eyes open for **outlaw aircraft**.

Driving - There have been several crews on the road at night, returning to motels after long shifts. Consider driving slower to prevent a wildlife wreck. There is a **NIGHT TIME speed limit of 45 mph** on Highway 41.

Inaccessible Country - Fires are moving into new areas where access may be less than what you have been using. Make an **intentional plan** of access and how you will handle an **emergency**.

Visitors - Visitors are still here so don't be surprised by visitors in the National Preserve enjoying their lands and homes. Expect **heavy traffic** on the roads late today as they return home.



10. ATTEMPTING FRONTAL ASSAULT ON
FIRE

WATCH OUT

- **Lookouts** - Can you see over the tree tops? Where is the fire? If air attack is your lookout, what happens when they leave your space? Does your lookout know your *location*?
- **Communications** - Are you on *the right channel* with your lookout? Do you have extra batteries? Are you scanning? The right channels?
- **Escape Routes** - Is there just one path through the *jungle*? Identify the ones that count and flag them. Find more than one....if you can.
- **Safety Zones** - *water won't work while wildlife want wetlands!* Go for green areas near structures or black burned areas. You might need to create a black area as a last resort so carry some fire makers and identify some grassy areas with light fuels to Wag Dodge.

Incident Safety Officers: Buddy Kelley, Randy Miller, Chris Wilson, Michael Heard, Galen Young, Matt Castellon, Damon Nelson, Andy Murrin, and Opie Blackwell

INCIDENT SAFETY ANALYSIS 215a

Avian Complex - Thursday, May 10, 2018

8. Location	9. Hazard	6. Control or Abatement Action (Engineering, Administrative, PPE, Avoidance, Education, etc)
All DIVS	Air Operations	<ul style="list-style-type: none"> ~ Follow " Aviation Watch-Out Situations" on page 44, IRPG. ~ Don't plan on air resources for medical transport or resupply. ~ Refer to page 57, IRPG for directing bucket drops. ~ Ensure positive communication with all air resources.
All DIVS	Hazard Trees	<ul style="list-style-type: none"> ~ Follow "Hazard Tree Safety" guidelines, IRPG page 22. ~ Post lookouts, or use a spotter in mop-up areas with personnel. ~ Don't park vehicles or take breaks in high concentrations of hazard trees. ~ Establish trigger points for disengagement during high wind events. ~ Remember that the hazard zone extends a minimum of 2 1/2 tree heights. ~ Cut within your skill/ability level
All DIVS	Extreme Fire Behavior	<ul style="list-style-type: none"> ~ Share weather observations with all personnel assigned to division. ~ Establish "Trigger Points" to withdraw. ~ Use "Risk Management" process prior to engaging in suppression actions, refer to page 1, IRPG.
IA	Roadside Response	<ul style="list-style-type: none"> ~ Do not engage in suppression activities along I-75 unless Law Enforcement establishes traffic control. ~ Conduct all operations as far as possible from traffic lanes. ~ Park all vehicles on the same side of road. ~ Use only vehicles equipped emergency lights along highways. ~ Operate pumps from the non-traffic or from the cab. ~ Anytime traffic is affected by the incident, contact the local law enforcement agency that has jurisdiction for assistance.
All DIVS	Injury & Medical Emergency	<ul style="list-style-type: none"> ~ Assist injured employee appropriate medical care. ~ Use EMT's on Division for initial care. ~ Follow medical protocol as outlined in ICS-206 & IRPG Pgs 99-108
All DIVS	Swamp Buggy	<ul style="list-style-type: none"> ~ Ensure equipment is inspected and safe to use. ~ Restrict swamp buggy use to approved trails. ~ Ensure operator is trained and certified to operate. ~ Passengers maintain 3 points of contact when loading and unloading. ~ Ensure operator and passengers has proper PPE according to the BICY Operations Policy.
All DIVS	Driving & Traffic	<ul style="list-style-type: none"> ~ Practice "Defensive Driving" techniques traveling on all roads and city streets. ~ Use spotters when backing. ~ Honk horn to alert personnel when backing. ~ Always use headlights. ~ Yield to pedestrians and bicycles. ~ Observe posted speed limits. Be aware of lower speed limits at night. ~ Use the 3 second rule for following distance when driving. ~ Avoid distractions (eating, cell phones, radio). ~ Ensure that windshields are kept clean of dust and bugs.
All DIVS	Structure Protection & HAZMAT	<ul style="list-style-type: none"> ~ Review "Wildland Urban Interface" Watch outs, IRPG page 12. ~ Use "Structure Assessment" checklist, IRPG pages 12-16. ~ Follow "HAZMAT Incident Operations" on pages 34-36 in IRPG.
All DIVS	Unburned Area/Reburn Potential	<ul style="list-style-type: none"> ~ Monitor weather. ~ Base actions upon observed and predicted fire behavior. ~ LCES Checklist (IRPG pg. 6). ~ Look Up, Down and Around (IRPG pg. 2-3).

INCIDENT SAFETY ANALYSIS 215a

All DIVS	ATV/UTV use	<ul style="list-style-type: none"> ~ Ensure equipment is inspected and safe to use. ~ Restrict UTV's to max width of 50" on ATV trails due to width and severe out sloped conditions. ~ Ensure operator is trained and certified to operate. ~ Ensure operator has proper PPE according to BICY policy, hardhats are acceptable only when speeds are less than 15 mph. ~ Question if it is mission critical.
All DIVS	Heat Related Illness (HRI)& Dehydration	<ul style="list-style-type: none"> ~ Drink Fluids throughout operational period (6-8 qts/shift). ~ Maintain water/electrolyte ratio of 3 to 1. ~ Carry extra water on line and cache water at drop points. ~ Take Frequent breaks, minimum of 10 minutes every hour. ~ Allow out of area resources time to acclimatize before expecting peak performance. ~ Recognize symptoms of HEAT RELATED ILLNESS which include. <ul style="list-style-type: none"> o Lack of energy o Headaches, dizziness o Lack of rest o No hunger, poor eating habits o Hot skin, and lack of sweating
All DIVS	Heavy Equipment Operations	<ul style="list-style-type: none"> ~ Ensure communications are established with operators. ~ Use hand signals if other communications are unavailable. ~ Maintain a 50'-100' exclusion area around equipment and increase it to 1 1/2 times tree height when in timber. ~ Use a spotter when backing. ~ Avoid working below heavy equipment.
All DIVS	Communications	<ul style="list-style-type: none"> ~ Maintain communication with aviation resources, and suppression organization. ~ Ensure all know frequency and protocol for contacting resources. ~ Utilize the ICS 205. ~ Utilize human repeaters when working in dead spots.
All DIVS	Wildlife & Livestock	<ul style="list-style-type: none"> ~ Watch out for wildlife & livestock inside fire area and along roadways. ~ Clean up all debris and trash during each operational period. ~ Be aware of your surrounding, watch footing and dont harass the wildlife.
All DIVS	Chain Saw Operations	<ul style="list-style-type: none"> ~ Follow "Hazard Tree Safety" guidelines, IRPG page 22 ~ Look up, Look down, Look around for hazard tree indicators. ~ Only fell and buck trees within your expertise, and training. ~ Follow "Procedural Felling Operations" on page 79 in IRPG. ~ Do not fall trees during high wind events. ~ Ensure proper use of all required PPE.
All DIVS	Firefighter & Public Smoke Exposure	<ul style="list-style-type: none"> ~ Identify homes and structures with private parties remaining behind the evacuation. ~ Identify personnel responsible for contacting private parties. ~ Use warning lights and provide traffic control on roadways during smoky and night operations. ~ Rotate crews out of smoky areas during firing and mop-up operations. ~ Contact Communications when firing operations are initiated.
All DIVS	Poisonous Plants	<ul style="list-style-type: none"> ~ Identify and Avoid hazard areas. ~ Launder clothing. ~ Shower frequently.
All DIVS	Unplanned Public Interaction	<ul style="list-style-type: none"> ~ Be alert to non-fire personnel in areas with suppression personnel. ~ All non-fire personnel will be escorted while on fireline. ~ Post lookouts to in areas with public to avoid conflicts with mission tasks. ~ Ensure sufficient security to restrict access to exclusion area.

MEDICAL PLAN (ICS 206)

1. Incident Name: Avian Complex	2. Operational Period: Date:05/10/18 Time: 0800 - 2000
--	---

3. Medical Aid Stations:				
Name	Location	Contact Number(s)/Frequency	Paramedics on Site?	
Tim Exline(EMTP\MEDL)	ICP	727-243-4144	<input checked="" type="checkbox"/> Yes	<input type="checkbox"/> No
Aaron Marshall EMTF	Div A	479-216-2832	<input checked="" type="checkbox"/> EMT	<input type="checkbox"/> No
Mike Worcester EMPF	Div A	303-908-3324	<input checked="" type="checkbox"/> EMT	
Tony Ortiz EMTF	Div C & E	865-712-4761	<input checked="" type="checkbox"/> EMT	
Bob Bruington EMTF	Div J	801-782-3585	<input checked="" type="checkbox"/> EMT	
John Dunzweiler EMTP	Div N	606-594-1627	<input checked="" type="checkbox"/> EMT	
Shawn Valentine EMTF	Div OO & BB & RR	479-4629233	<input checked="" type="checkbox"/> YES	
Jeff Cummings EMTF	IA	317-730-6653	<input checked="" type="checkbox"/> EMT	

4. Transportation(indicate air or ground):				
ON SCENE AMBULANCE				
Ambulance Service	Location	Number(s)/Frequency	Level of Service	
Collier County EMS	Oasis Visitor Center	911 / Communications	<input checked="" type="checkbox"/> ALS	
Collier County EMS	Deep Lake	911 / Communications	<input checked="" type="checkbox"/> ALS	
Collier County EMS (ground)	Everglades City (Medic 61)	911 / 239-252-3740	<input checked="" type="checkbox"/> ALS	<input type="checkbox"/> BLS
Collier County Med-Flight (air)	Naples Airport	911	<input checked="" type="checkbox"/> ALS	<input type="checkbox"/> BLS
Ochopee Fire Rescue	Everglades City	911 / 239-695-4114	<input checked="" type="checkbox"/> ALS	<input type="checkbox"/> BLS
Miami Dade Fire Rescue air hoist	Miami	911 Utilize 784 on BICY command frequency	<input type="checkbox"/> ALS	<input checked="" type="checkbox"/> BLS

5. Hospitals:							
Hospital Name	Address	Contact Number(s)	Travel Time		Trauma Center	Burn Center	Helipad
			Air	Ground			
Physicians Regional Collier Blvd	8300 Collier Blvd. Naples, FL 34114 Lat:26°6.313'/Long: -81°41.106'	239-354-6000 (Main) 239-354-6190 (ER)	15	50	<input type="checkbox"/> Yes Level: _____	<input type="checkbox"/> Yes <input checked="" type="checkbox"/> No	<input checked="" type="checkbox"/> Yes <input type="checkbox"/> No
Physicians Regional Pine Ridge	6101 Pine Ridge Road, Naples 34119 Lat:26°12.833'/Long: -81°43.954'	239-348-4000 (Main) 239-304-4748 (ER)	15	50	<input type="checkbox"/> Yes Level: _____	<input type="checkbox"/> Yes <input checked="" type="checkbox"/> No	<input checked="" type="checkbox"/> Yes <input type="checkbox"/> No
Naples Community Hospital	350 7 th Street North, Naples 34102 Lat:26°9.046'/Long: -81°47.907'	239-513-7709 (Main) 239-436-5151 (ER)	15	60	<input checked="" type="checkbox"/> Yes Level: <u>2</u>	<input type="checkbox"/> Yes <input checked="" type="checkbox"/> No	<input checked="" type="checkbox"/> Yes <input type="checkbox"/> No
Jackson Memorial Hospital	1611 NW 12 Avenue, Miami Lat:25°47.508'/Long: -80°12.756'	305-585-1111 (Main) 305-585-6910 (ER)	20	60	<input checked="" type="checkbox"/> Yes Level: <u>1</u>	<input checked="" type="checkbox"/> Yes <input type="checkbox"/> No	<input checked="" type="checkbox"/> Yes <input type="checkbox"/> No
Kendal Regional Medical Center	11750 SW 40 th St., Miami 33175 Lat:25°43.916'/Long: -80°23.148'	305-223-3000 (Main) 305-227-5544 (ER)	20	50	<input checked="" type="checkbox"/> Yes Level: <u>1</u>	<input type="checkbox"/> Yes <input checked="" type="checkbox"/> No	<input checked="" type="checkbox"/> Yes <input type="checkbox"/> No
EPN Urgent Care Center	6400 Davis BLVD Suite 103, Naples, 34104	239-775-2300 (Main)		29	No	No	No

- 6. Special Medical Emergency Procedures:**
- Patient or nearest responder notifies Group Supervisor who will respond to the scene and become the "incident within an incident" (IWI) commander.
 - **Group Supervisor will notify nearest medical responder and ICP-Communications** of the incident and "Eight Line" report attached to the back of this IAP on page 108 of the IRPG.
 - **EPN Urgent Care Center** is for non-Life threatening medical care, can only be reached by ground transport.
Hours: Mon – Sat 0800-1900; Sunday 0800-1600

7. Prepared by (MEDL): Tim Exline Signature: /s/ *Tim Exline* Date/Time: 05/9/2018 13:00

8. Approved by (SOF1): Buddy Kelley Signature: /s/ *Buddy Kelly*

Helicopter Landing Zones			
Landing Zone:	Coordinates:	Landing Zone:	Coordinates:
Oasis	25 51.45 x 81 02.06	Calusa Ranch Airstrip:	26 03.17 x 81 04.03
Ochopee	25 53.99 x 81 19.25	Sanctuary Airstrip:	26 13.14 x 80 56.13
Carnestown	25 54.61 x 81 21.81	Environmental Education Center	25 44.47 x 80 56.52
Pad 1/ End of 11 Milerd	25 58.94 x 80 55.46	Deep Lake Station LZ:	26 02.56 x 81 20.59
NPS Cal Stones	26 02.27 x 81 03.83	Poppenhagers Airstrip	25 59.109 x 81 02.42

INCIDENT RADIO COMMUNICATIONS PLAN		Incident Name AVIAN COMPLEX			Date/Time Prepared 5/9 /2018 1800			Operational Period Date/Time 5/10/2018 0700-2400		
Ch #	Function	Channel Name/Trunked Radio System Talkgroup	Assignment	RX Freq N or W	RX Tone/NAC	TX Freq N or W	Tx Tone/NAC	Mode A, D or M	Remarks	
1	COMMAND	CARNSRPT	COMMAND	172.425N	1035	170.100N	1035	D	Located at Hwy 41 &29	
2	COMMAND	OASIS	COMMAND	172.425N	1035	171.625N	1035	D	repeater located in SW	
3	AVIATION	A/G IA	AIR TO GROUND IA	166.6125N		166.6125N			ALL IA	
4	TACTICAL	BICY TAC 1	DIV A, C, E Buzzard	168.600N	0	168.600N	0	A	BUZZARD/FLAMINGO/IA	
5	TACTICAL	BICY TAC 2	DIV J BUZZARD, Curlew	168.250N	0	168.250N	0	A	BUZZARD/CURLEW	
6	AIR TO GROUND	A/G 59	AVIATION	169.1125N	0	169.1125N	0	A	BUZZARD	
7	REPEATER	PANTHER	FLAMINGO	169.650N	677	166.375N	677	D	Repeater Located in N/W	
8	TACTICAL	PANTHER TAC 1	DIV N Buzzard	166.750N	0	166.75N	0	A	INITIAL ATTACK	
9	TACTICAL	PANTHER TAC 2	Div T,V Buzzard	166.825N	0	166.825N	0	A	INCIDENT W/IN INCIDENT	
10	AIR TO GROUND	A/G 85	AVIATION	168.325N	0	168.325N	0	A	FLAMINGO FIRE	
11	TACTICAL 11	EVERTAC1	IA and Firing Group	168.050N	0	168.050N	0	A		
12	AVIATION	A/G 12	AIR TO GROUND	169.150N	0	169.1500N	0	A	CURLEW	
13	COMMAND	CMD 13	UNUSED	170.975N		168.700N			C-1	
14	COMMAND	CMD 14	UNUSED	170.6875N		166.575N			C11	
15	COORDINATION	BLUE V23	LOCAL COORDINATION	154.295N		154.295N		A	STATE RESOURCES	
16	Air Guard	Air Guard	Emergency Aircraft Comms	168.6250N		168.6250N	110.9	A	EMERGENCY	
Prepared By (Communications Unit) /s/ Claude Gilleland COML 706-878-6678 ICP 470-214-2100					Incident Location Big Cypress National Wildlife Preserve County Clinch State ga Latitude N Longitude W					

The convention calls for frequency lists to show four digits after the decimal place, followed by either an "N" or a "W", depending on whether the frequency is narrow or wide band. Mode refers to either "A" or "D" indicating analog or digital (e.g. Project 25) or "M" indicating mixed mode. All channels are shown as if programmed in a control station, mobile or portable radio. Repeater and base stations must be programmed with the Rx and Tx reversed.

INCIDENT RADIO COMMUNICATIONS PLAN		Incident Name FLAMINGO			Date/Time Prepared 5/9/2018 1530			Operational Period Date/Time 5/10/2018 0800-2000		
Ch #	Function	Channel Name/Trunked Radio System Talkgroup	Assignment	RX Freq N or W	RX Tone/NAC	TX Freq N or W	Tx Tone/NAC	Mode A, D or M	Remarks	
1	COMMAND	CARNSRPT	COMMAND	172.425N	1035	170.100N	1035	D		
2	COMMAND	OASIS	COMMAND	172.425N	1035	171.625N	1035	D	BUZZARD	
3	AVIATION	A/G IA	AIR TO GROUND IA	166.6125N		166.6125N			ALL IA	
4	TACTICAL	BICY TAC 1	DIV BB	168.600N	0	168.600N	0	A	BUZZARD/FLAMINGO/IA	
5	TACTICAL	BICY TAC 2	DIV 00	168.250N	0	168.250N	0	A	BUZZARD/FLAMINGO	
6	AIR TO GROUND	A/G 59	AVIATION	169.1125N	0	169.1125N	0	A	INITIAL ATTACK	
7	REPEATER	PANTHER	FLAMINGO COMMAND	169.650N	677	166.375N	677	D	FLAMINGO FIRE	
8	TACTICAL	PANTHER TAC 1	DIV RR	166.750N	0	166.75N	0	A	INITIAL ATTACK	
9	TACTICAL	PANTHER TAC 2	Div T Buzzard	166.825N	0	166.825N	0	A	INCIDENT W/IN INCIDENT	
10	AIR TO GROUND	A/G 85	AVIATION	168.325N	0	168.325N	0	A	FLAMINGO/BUZZARD	
11	TACTICAL 11	EVERTAC1	IA AND FIRING GROUP	168.050N	0	168.050N	0	A		
12										
13	COORDINATION	RED	COORDINATE W STATE	154.265N		154.265N		A	STATE/LOCAL RESOURCE	
14	COORDINATION	WHITEV21	COORDINATE W STATE	154.280N		154.280N		A	STATE/LOCAL RESOURCE	
15	COORDINATION	BLUEV23	COORDINATE W STATE	154.295N		154.295N		A	STATE/LOCAL RESOURCE	
16	Air Guard	Air Guard	Emergency Aircraft Comms	168.6250N		168.6250N	110.9	A	EMERGENCY	
Prepared By (Communications Unit) /s/ Claude Gilleland COML 706-878-6678 ICP 470-214-2100					Incident Location Big Cypress National Wildlife Preserve County Clinch State ga Latitude N Longitude W					

The convention calls for frequency lists to show four digits after the decimal place, followed by either an "N" or a "W", depending on whether the frequency is narrow or wide band. Mode refers to either "A" or "D" indicating analog or digital (e.g. Project 25) or "M" indicating mixed mode. All channels are shown as if programmed in a control station, mobile or portable radio. Repeater and base stations must be programmed with the Rx and Tx reversed.

Logistic Information

Fueling

Monument Staging Area	0700 – 0800
ICP (Dona Drive)	0830 – 0930

Fueling for resources without agency or self-sufficient fueling capabilities

Meals

Lunch:

Sack lunches available for line personnel at ICP every morning. Pick up with ice, water and Gatorade

*Order sack lunches daily through divisions by 0830 for the next day

Dinner Information:

If any evening meals are needed they must be ordered by Division before 12:00 in order to have them available for delivery for that evening.

Training Information

Are you a Trainee assigned to this incident? Do you have an initiated Position Task Book?

If so, please come see the Incident Training Specialist (TNSP). Remember to bring your initiated Task Book and Incident Qualification Card (Red Card).

The QR Code will bring you to an on-line version of the Incident Trainee/Training Data Form (TNSP-1) to be completed before seeing the TNSP.



Human Resource Message

The mission of the Gold Team is to safely, effectively and efficiently manage the Avian Complex by maintaining a team of skilled and productive personnel.

During this incident we will strive to successfully complete our mission and achieve our objectives while creating a positive, drug and alcohol free work environment for all assigned incident personnel.

The Gold Team fully supports EEO and will not tolerate sexual harassment or any form of discrimination!

All inappropriate behavior will be dealt with promptly. Disciplinary action and reporting back to an individual's home unit will be initiated as necessary.

Please report any incidents of inappropriate behavior to your supervisor, or myself immediately.

Steve Parrish, Incident Commander



Finance Message

- Only 1 CTR per single resource.
- CTRs with over 16 hours will need to have justification and mitigation plans provided in the remarks section. These CTRs must be signed by Section Chief.
- Meals breaks (per 8hrs) need to be shown on CTRs. Provide Justification in the remark section if no break was taken.
- Notify Finance 2 days prior to Demob day.
- Please indicate your Division and fire name in the remarks section.
- Questions can be emailed to: avianfinancecomplex@gmail.com



Southern Area Incident Management Gold Team Fire Information

Email: BICYFireInfo@gmail.com



InciWeb <https://tinyurl/aviancomplex>



<https://twitter.com/BigCypressNPS>



<https://www.facebook.com/BigCypressNPS>

Phone: 305-204-6659 (8 a.m. – 8 p.m.)

WE WANT YOUR PICTURES AND VIDEOS!

Please email us your videos and pictures at BICYfireinfo@gmail.com.

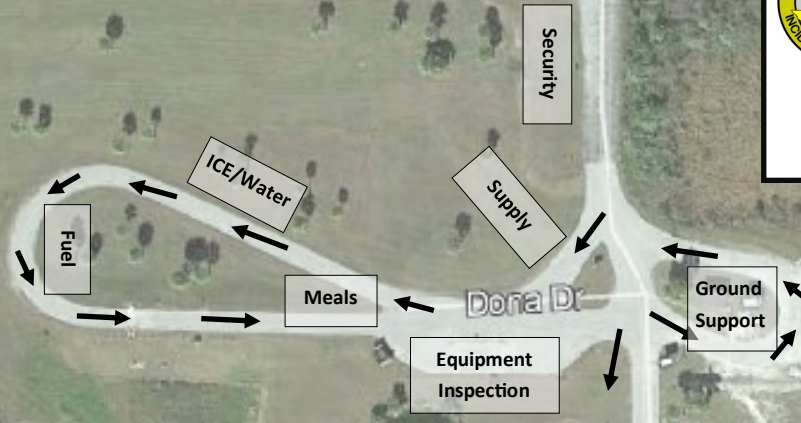
We love to post them on social media and our information boards.



ICP Map



Avian Complex



Wetlands
No
Parking

One Way
Briefing Area Parking
Incident Business Parking
One Way

- COMO
- RV
- FBAN
IMET
- Ordering
- Finance
- Finance
- Plans
- Plans
- IC
- Info
- OPS/Safety
- Plans/MED

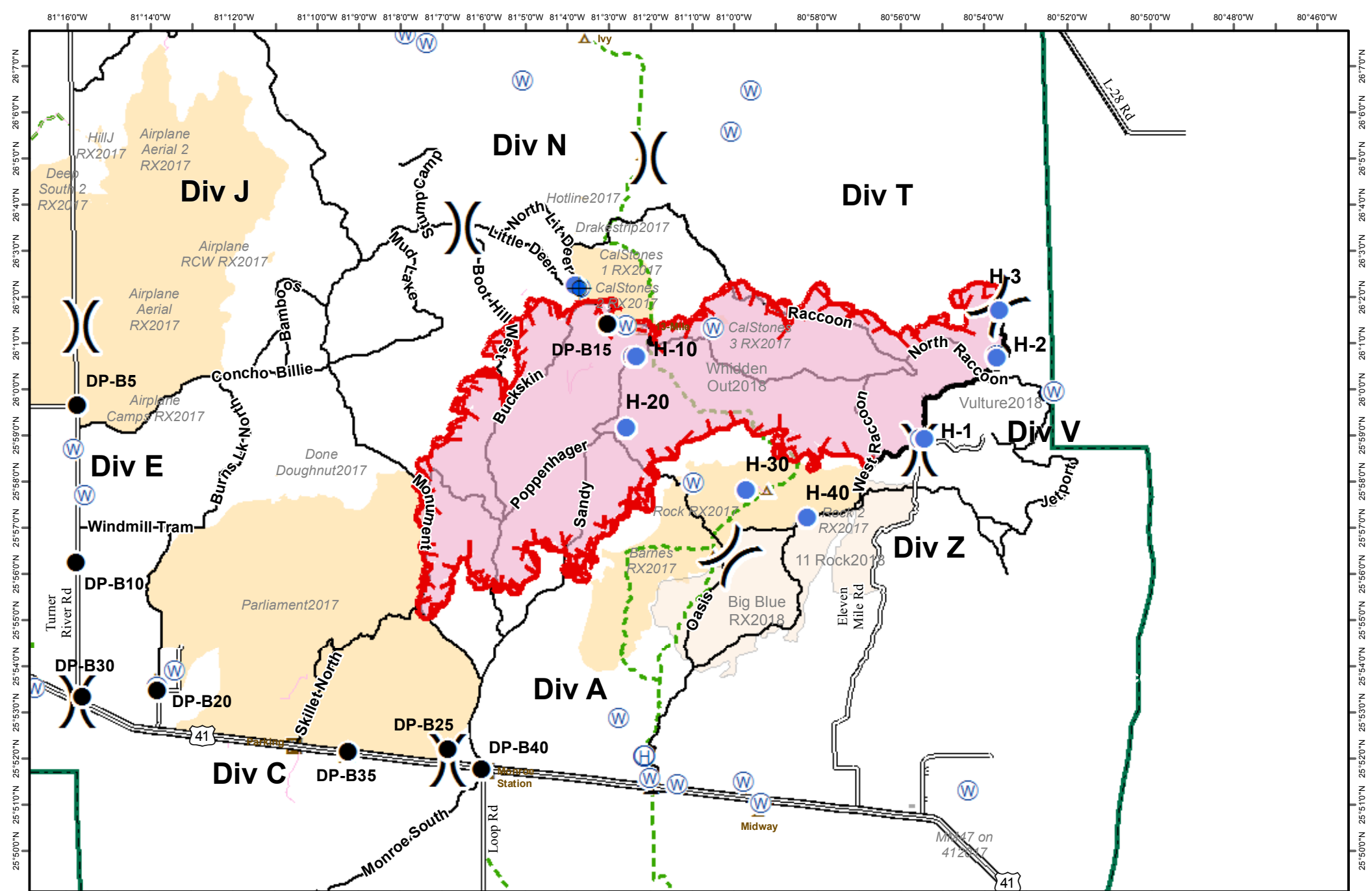
Underground Service Lines

Bridon Rd

Dona Drive

Briefing

No Parking



FL-BCP-018031
Avian Complex
Buzzard
34,854 acres
 Operational Period: May 10, 2018
 Perimeter current as of May 9 (0545 hrs)
 Datum: NAD 83

Legend

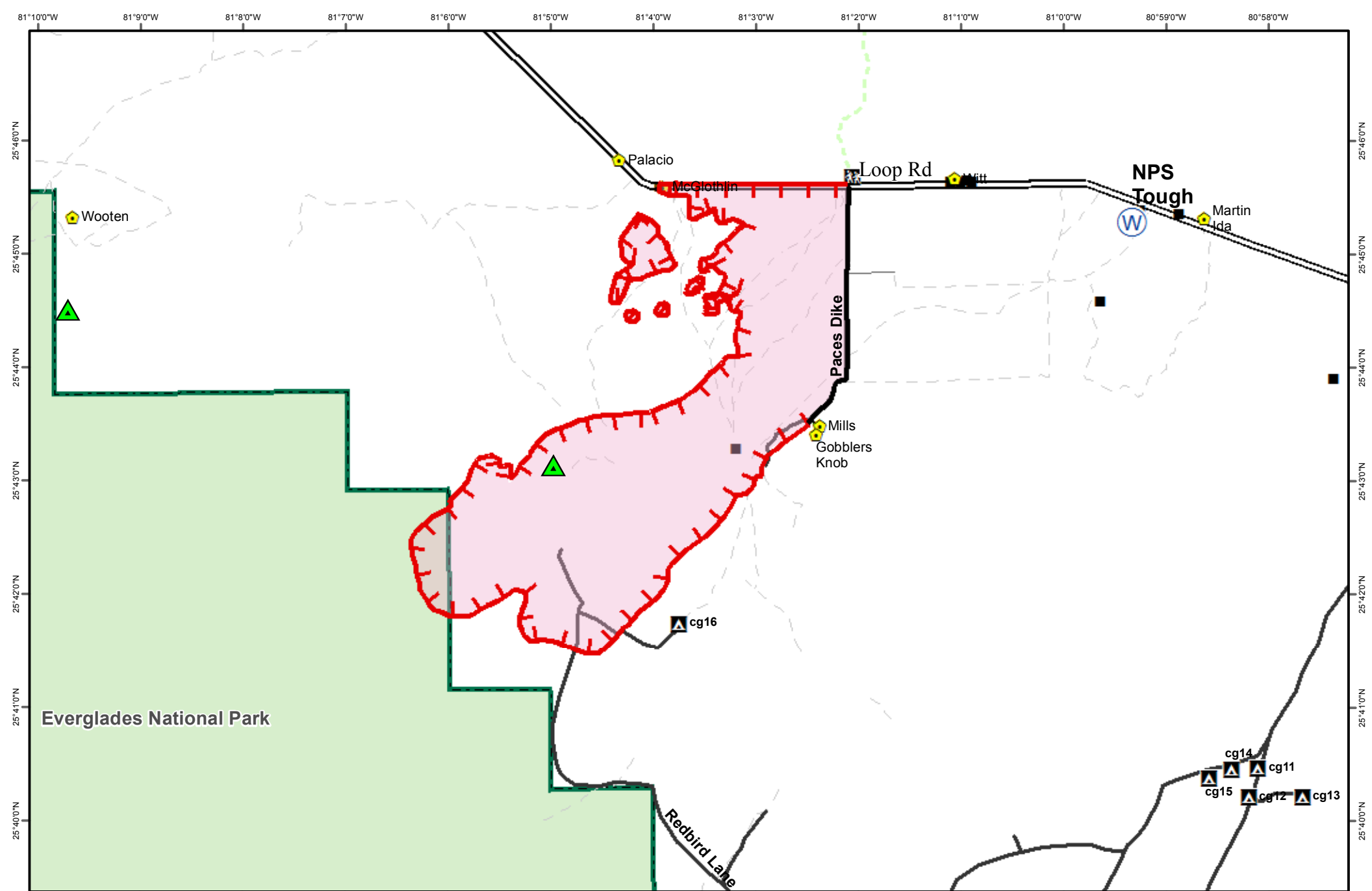
Uncontrolled Fire Edge	BICY boundary	Dip Site
Completed Line	Drop Point	Helispot
Wildfire Daily Fire Perimeter	Helibase	Water Source
Improved Road	Division Break	

BIG CYPRESS NATIONAL PRESERVE
U.S. FISH & WILDLIFE SERVICE
R4 - ZONE 6

U.S. FISH & WILDLIFE SERVICE

SOUTHERN AREA
GOLD TEAM
INCIDENT MANAGEMENT

0 1 2 3 4 5 6 Miles



FL-BCP-018031
Avian Complex Curlew
5,508 acres
 Operational Period: May 10, 2018
 Perimeter current as of May 9 (0545 hrs)
 Datum: NAD 83

Legend

- Uncontrolled Fire Edge
- Wildfire Daily Fire Perimeter
- Camp, Private
- Camp, NPS
- Improved Road
- Canal
- BICY boundary
- Dip Site
- Helispot
- Water Source
- Division Break
- eaglenests

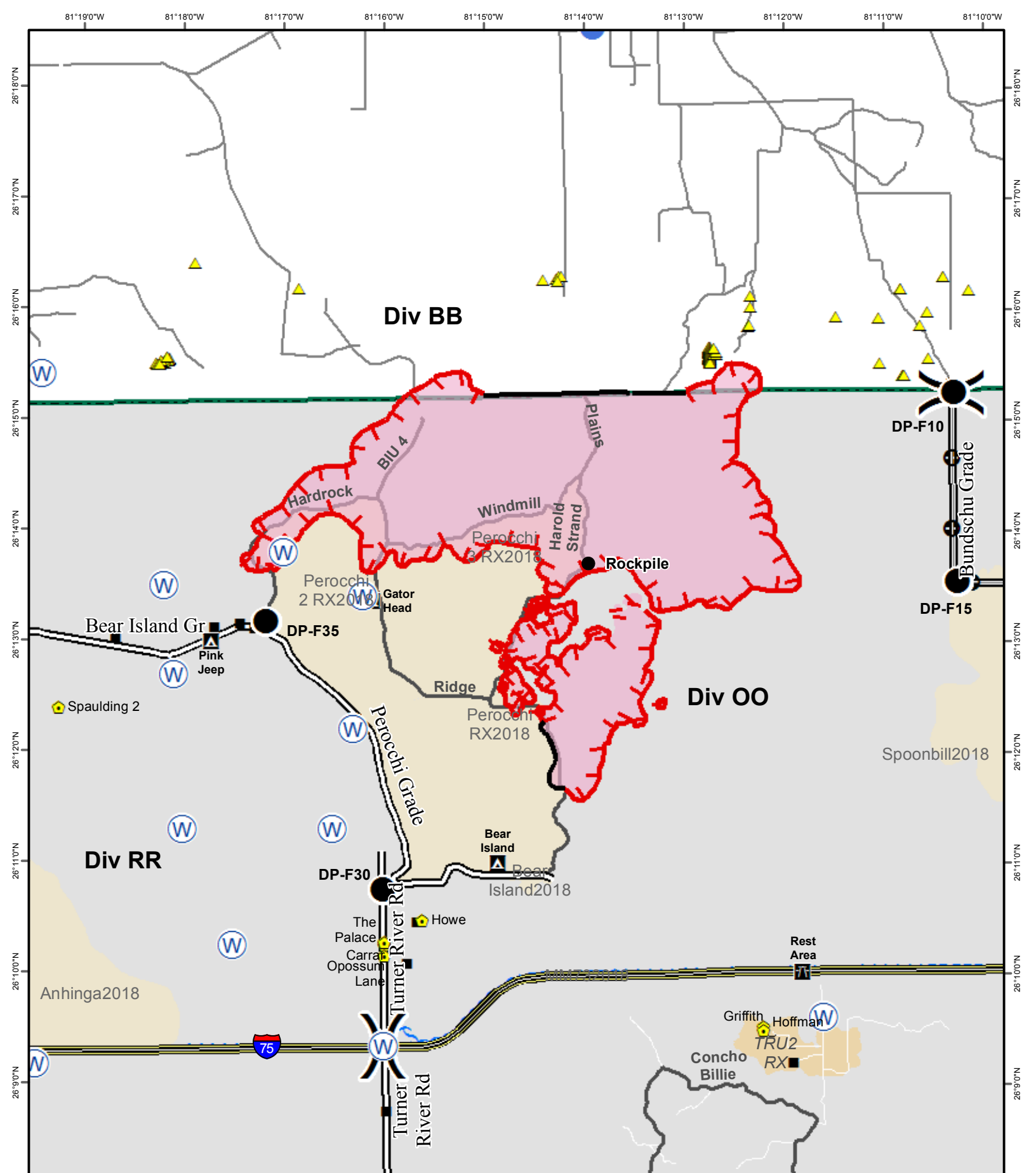
BIG CYPRESS NATIONAL PRESERVE
 U.S. FISH & WILDLIFE SERVICE
 R4 - ZONE 6

U.S. FISH & WILDLIFE SERVICE
 REGIONAL OFFICE



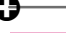



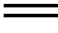



SOUTHERN AREA
 GOLD TEAM
 INCIDENT MANAGEMENT


N
 E
 S
 W

0 1 2 3 Miles




FL-BCP-018031
Avian Complex Flamingo
6,294 acres
 Operational Period: May 10, 2018
 Perimeter current as of May 9 (0545 hrs)
 Datum: NAD 83


-  Uncontrolled Fire Edge
-  Completed Line
-  Masticator Line
-  Wildfire Daily Fire Perimeter
-  BICY boundary
-  Camp
-  Improved Road
-  Canal
-  Water Source
-  Helispot




BIG CYPRESS NATIONAL PRESERVE
U.S. FISH & WILDLIFE SERVICE
R4 - ZONE 6




U.S. FISH & WILDLIFE SERVICE



SOUTHERN AREA GOLD TEAM INCIDENT MANAGEMENT





0 1 2 Miles

PHONE LIST - AVIAN COMPLEX					
Position	Name	Phone Number	Position	Name	Phone Number
COMMAND			FINANACE		
Incident Commander	Steve Parrish	850-524-1244	Chief	Reggie Lanier	912-314-1085
Incident Commander (t)	Charles Patterson	850-661-1005	Chief	Wanda Kelley	423-584-1472
Liaison Officer	Mike Wright	970-819-2890	Chief (t)	Jenny Cross	423-715-9025
Liaison Officer	Marty Bentley	423-584-1682	Time Unit Leader	Terry Quigley	770-254-7217
Public Information	Michelle Burnett	803-920-6167	Cost Unit Leader	Tom Steele	770-363-3583
Public Information (t)	Donald Simon	910-975-1895	Cost Unit Leader (t)	Laura Wilson	765-427-7564
Safety Officer	Buddy Kelly	850-447-1344	Comp/Claims	Annette Pintado	303-915-2000
Safety Officer	Randy Miller	571-232-7922	Procurement (t)	Donna Line	706-474-3216
Safety Officer (t)	Michael Heard	334-488-5966	PLANNING		
Safety Officer (t)	Chris Wilson	918-314-7264	Chief	Dave Berens	601-319-6823
OPERATIONS			Chief	Don Watson	910-334-0033
Lead Ops	Jeff Schardt	706-280-5498	Chief (t)	James Ehrlich	423-779-4731
Field Ops	Mike Davis	936-219-7743	Resource Unit Leader	Melonie Sellers	601-508-8997
Planning Ops	Tommy Hawkins	706-676-7538	Resource Unit Leader	Carol O'Bryan	903-263-8704
BRANCH OPBD	Bruce Malloy	830-313-3996	Situation Unit Leader (t)	Jeff Adams	361-550-5085
Flamingo Division BB	Greg Salansky	865-414-6461	Fire Behavior Analyst	Kelly Cagle	336-302-0343
Flamingo Division OO	Heath Thomas	501-208-7077	Fire Behavior Analyst (t)	Mike Housh	912-281-1575
Flamingo Division OO (t)	Steven Thime	719-660-5567	IMET	John Pendergrast	240-499-6649
Flamingo Division RR	Matt Johnson	870-415-0185	IMET (t)	Robert Rickey	623-703-7323
Flamingo Division RR (t)	Alan Kirby	352-434-1381	Demob	Thomas Barrett	478-550-6372
BRANCH II OPBD	Mike White	541-297-7468	Check In	Jocelyn Howell	214-934-0138
BUZZARD Division A	Logan McCrae	541-519-1581	Traning Specialist	Matt Dillon	610-420-9911
BUZZARD Division C	Josh Wright	530-739-2660	Traning Specialist (t)	Annie Loeffler	916-216-7677
BUZZARD Division E	Kris Schroeder	541-891-1241	Compter Tech	Nikita Carty	305-878-9907
BUZZARD Division E (t)	Bernie Guthrie	530-640-3169	Computer Tech	Scott Bishaw	239-595-9107
BUZZARD Division J	Brad Rafeedy	530-598-8471	Computer Tech	John Edwards	850-261-9127
BUZZARD Division J (t)	Chris Richards	239-269-8766	LOGISTICS		
BUZZARD Division N	Jon Dentinger	541-823-3027	Chief	Tom Phillips	936-635-7154
BUZZARD Division N (t)	Adam Kunce	239-285-0989	Chief (t)	Cameron Crisp	304-642-2035
BUZZARD Division T / T / Z	Ron Calhoun	478-290-9755	Deputy	Susan Cornett	903-930-5321
BRANCH III			Facilities Unit Leader	Gene-Paul Matson	434-665-0444
Caracara/Vulture	UNSTAFFED		Facilities Unit Leader	Grant Blue	720-413-4002
Curlew Divison	Sammy Mcfarland	580-380-9680	Supply Unit	Ron Zabka	603-630-4916
Curlew Divison(t)	Kendal Carpenter	918-721-2502	Ground Support Unit Leader	Todd Waller	501-337-6308
GROUP			Equipment Manager	Clyde Morace	601-431-1756
GROUP IA #1	Bryon Hart	850-264-9567	Ordering Manager	Sherri Kite	850-209-2150
GROUP IA #1 (t)	Paul Ryan	239-826-6755	Ordering Manager (t)	Uylanda Weathers	601-529-2293
GROUP IA #2	Jason Lago	850-570-2217	Receiving & Distribution	Chris Combs	727-992-0046
GROUP Strategic Firing	Orlando Genao	305-522-2532	Receiving & Distribution	Mark Eaton	850-544-0446
Structure Protection Specialist	Glenn Phillips	541-571-4930	Communications	Claude Gilleland	706-878-6678
AIR OPERATIONS			Medical Unit Leader	Tim Exline	239-227-0290
Air Operation Branch Director	Pete Kubiak	404-661-4819	Security Mananger	Sasha Herrin	239-300-5755
Air Support Group Supervisor	Mike Rock	606-813-9750			
Helibase Manager	John Bragg	423-483-2798			
ICP Communications 470-214-2100					
Big Cypress Dispatch - 239-695-9780 ext. 104 OR 239-450-2403					

MEDICAL PLAN (ICS 206 WF)

Controlled Unclassified Information//Basic

Medical Incident Report

FOR A NON-EMERGENCY INCIDENT, WORK THROUGH CHAIN OF COMMAND TO REPORT AND TRANSPORT INJURED PERSONNEL AS NECESSARY.

FOR A MEDICAL EMERGENCY: IDENTIFY ON SCENE INCIDENT COMMANDER BY NAME AND POSITION AND ANNOUNCE "MEDICAL EMERGENCY" TO INITIATE RESPONSE FROM IMT COMMUNICATIONS/DISPATCH.

Use the following items to communicate situation to communications/dispatch.

- CONTACT COMMUNICATIONS / DISPATCH (**Verify correct frequency prior to starting report**)
Ex: "Communications, Div. Alpha. Stand-by for Emergency Traffic."
- INCIDENT STATUS: *Provide incident summary (including number of patients) and command structure.*
Ex: "Communications, I have a Red priority patient, unconscious, struck by a falling tree. Requesting air ambulance to Forest Road 1 at (Lat./Long.) This will be the Trout Meadow Medical, IC is TFLD Jones. EMT Smith is providing medical care."

Severity of Emergency / Transport Priority	<input type="checkbox"/> RED / PRIORITY 1 Life or limb threatening injury or illness. Evacuation need is IMMEDIATE <i>Ex: Unconscious, difficulty breathing, bleeding severely, 2° – 3° burns more than 4 palm sizes, heat stroke, disoriented.</i> <input type="checkbox"/> YELLOW / PRIORITY 2 Serious Injury or illness. Evacuation may be DELAYED if necessary. <i>Ex: Significant trauma, unable to walk, 2° – 3° burns not more than 1-3 palm sizes.</i> <input type="checkbox"/> GREEN / PRIORITY 3 Minor Injury or illness. Non-Emergency transport <i>Ex: Sprains, strains, minor heat-related illness.</i>	
Nature of Injury or Illness & Mechanism of Injury		Brief Summary of Injury or Illness <i>(Ex: Unconscious, Struck by Falling Tree)</i>
Transport Request		Air Ambulance / Short Haul/Hoist Ground Ambulance / Other
Patient Location		Descriptive Location & Lat. / Long. (WGS84)
Incident Name		Geographic Name + "Medical" <i>(Ex: Trout Meadow Medical)</i>
On-Scene Incident Commander		Name of on-scene IC of Incident within an Incident <i>(Ex: TFLD Jones)</i>
Patient Care		Name of Care Provider <i>(Ex: EMT Smith)</i>

3. INITIAL PATIENT ASSESSMENT: *Complete this section for each patient as applicable (start with the most severe patient)*

Patient Assessment: See IRPG page 106

Treatment:

4. TRANSPORT PLAN:

Evacuation Location *(if different): (Descriptive Location (drop point, intersection, etc.) or Lat. / Long.)* Patient's ETA to Evacuation Location:

Helispot / Extraction Site Size and Hazards:

5. ADDITIONAL RESOURCES / EQUIPMENT NEEDS:

Example: Paramedic/EMT, Crews, Immobilization Devices, AED, Oxygen, Trauma Bag, IV/Fluid(s), Splints, Rope rescue, Wheeled litter, HAZMAT, Extrication

6. COMMUNICATIONS: Identify State Air/Ground EMS Frequencies and Hospital Contacts as applicable

Function	Channel Name/Number	Receive (RX)	Tone/NAC *	Transmit (TX)	Tone/NAC *
COMMAND					
AIR-TO-GRND					
TACTICAL					

7. CONTINGENCY: **Considerations:** *If primary options fail, what actions can be implemented in conjunction with primary evacuation method? Be thinking ahead.*

8. ADDITIONAL INFORMATION: *Updates/Changes, etc.*

REMEMBER: Confirm ETA's of resources ordered. Act according to your level of training. Be Alert. Keep Calm. Think Clearly. Act Decisively.