

BIG CYPRESS NATIONAL PRESERVE



# BUZZARD FIRE

4/13/2018



**TRAIL CLOSURE IN EFFECT:**

- \* North Raccoon ORV
- \* Lost Dog ORV
- \* Pipeline ORV
- \* Jetport ORV
- \* Rock Road ORV
- \* Rock Bypass ORV

**AREA CLOSURE IN EFFECT**

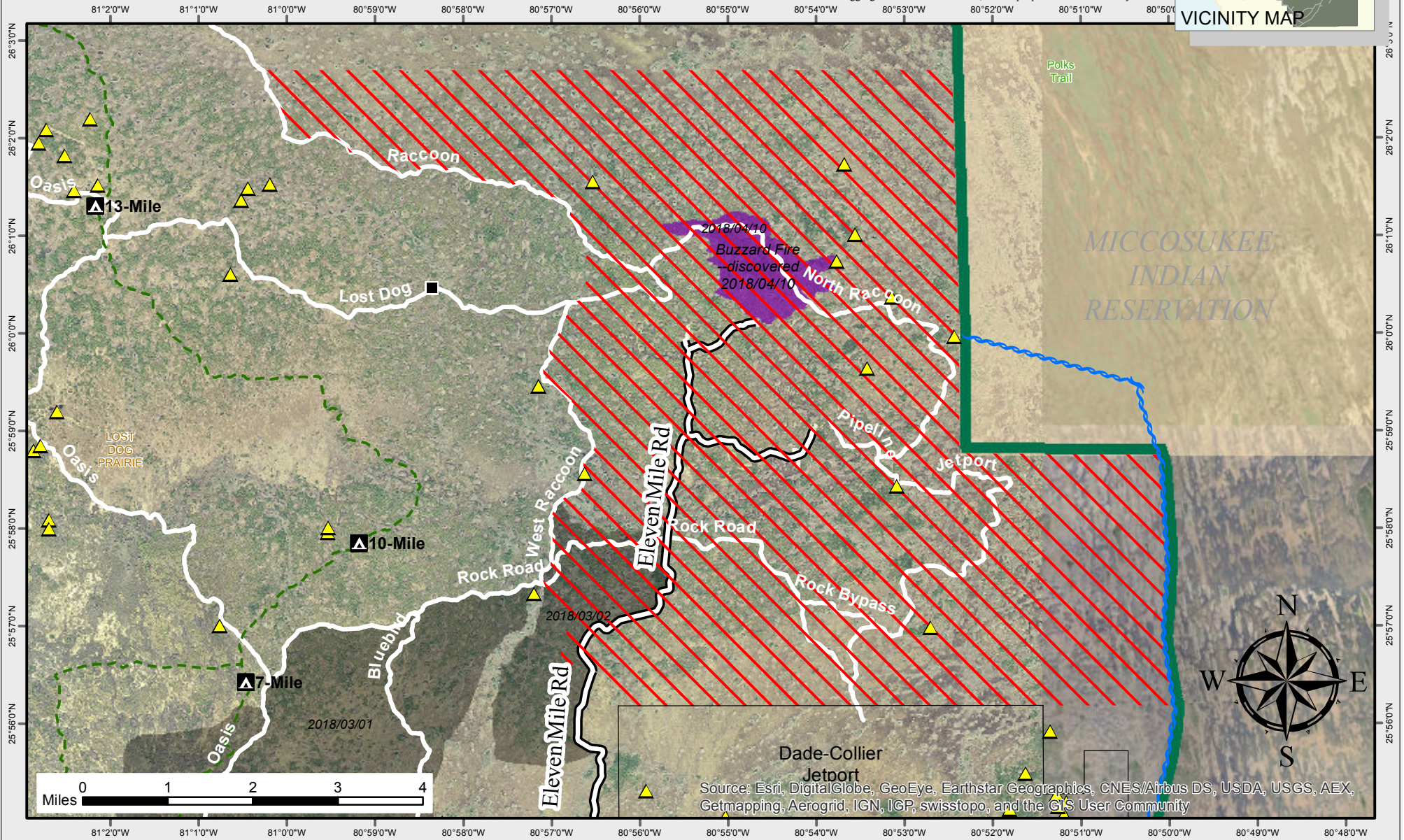
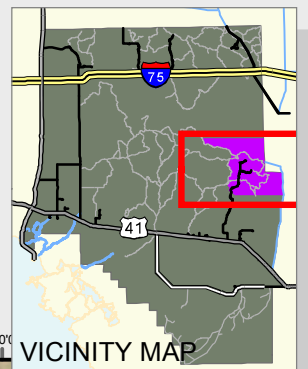
U.S. Department of the Interior  
Big Cypress National Preserve  
33100 Tamiami Trail East  
Ochopee, FL 34141

North American Datum 1983  
Map created 2018 by  
BICY Fire Operations Center

**LEGEND**

	Area Closure		Private Structure
	ORV closure -- No Use Allowed		NPS Property
	Wildfire as of 4/12/2018, 6:47pm		Canal
	Hiking Trail		Primary ORV Trail
	Burn completed in 2018		BICY boundary

No warranty is made by the National Park Service (NPS) as to the accuracy, reliability, or completeness of this data for individual use or aggregate use with other data, or for purposes not intended by NPS.



Dade-Collier  
Jetport

Source: Esri, DigitalGlobe, GeoEye, Earthstar Geographics, CNES/Airbus DS, USDA, USGS, AEX, Getmapping, Aerogrid, IGN, IGP, swisstopo, and the GIS User Community