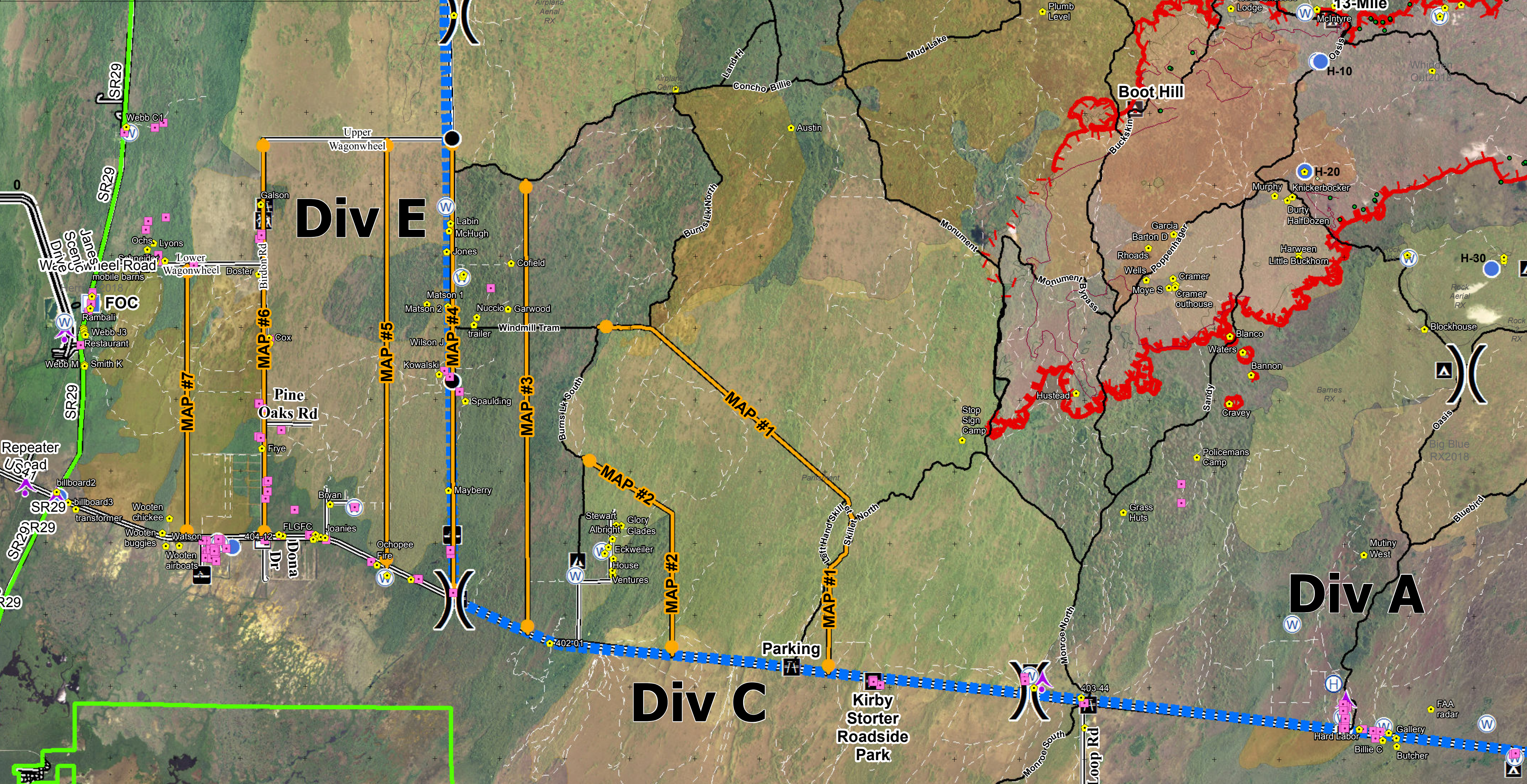



Management Action Points	
Trigger	Action to be Taken
Fire reaches MAP#1	'Set' condition between MAP 2 and MAP 3 'Ready' condition between MAP 4 and MAP 3
Fire reaches MAP#2	'GO' orders will be given to residents along Burns Lake Rd. 'Set' condition between MAP 3 and MAP 4 'Ready' condition between MAP 4 and MAP 5
Fire reaches MAP#3	'GO' orders will be given to residents between MAP 3 and MAP 4 east of Turner River Rd 'Set' condition between MAP 4 and MAP 5 'Ready' condition between MAP 5 and MAP 6
Fire reaches MAP#4	'GO' orders will be given to residents between MAP 4 and MAP 5 west of Turner River Rd 'Set' condition between MAP 5 and MAP 6 'Ready' condition between MAP 6 and MAP 7
Fire reaches MAP#5	'GO' orders will be given to residents between MAP 5 and MAP 6 east of Pine Oaks Rd 'Set' condition between MAP 6 and MAP 7 'Ready' condition west of MAP 7
Fire reaches MAP#6	'GO' orders will be given to residents between MAP 6 and MAP 7 west of Pine Oaks Rd



**Avian Complex**  
 FL-BCP-018031  
**Management Actions**  
 May 8, 2018  
 Branch II  
**Buzzard**

  
 32,233 acres  
 Latest Perimeter as of  
 20180508 @ 0530 by IR

Completed Line	Dip Site	Fire History 2015 & 2016	Campground	Trailhead
Uncontrolled Fire Edge	Division Break	Fire History 2017	Canoe Access	Private Structures
Event Polygon	Helispot	Fire History 2018	Office	NPS Property
Maximum Manageable Area	Water Source	Big Cypress National Preserve	Park/Rest Area	
Management Action Point				

  
 0 1 2 3 4 Miles  
 NAD83 UTM 17

