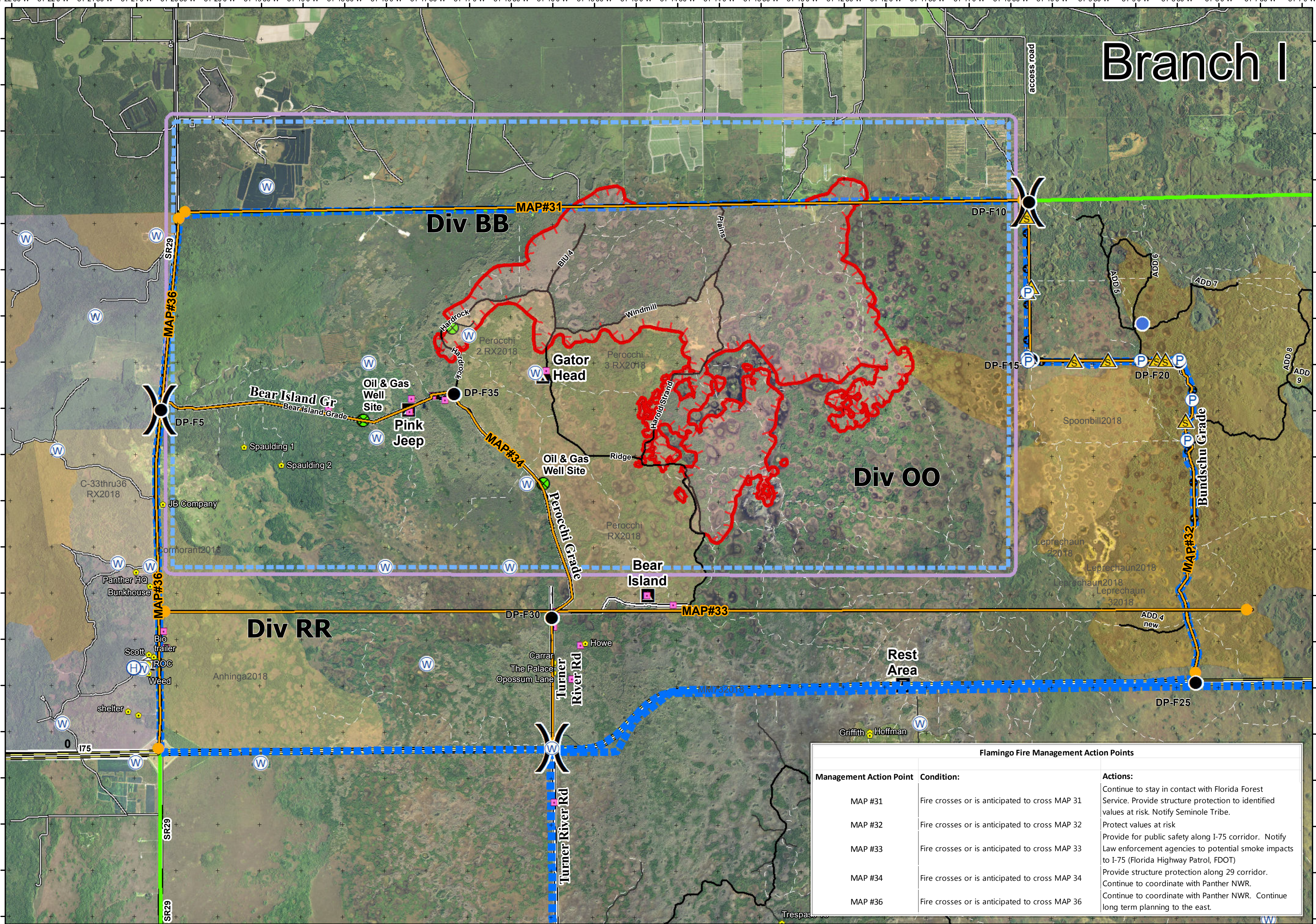


Branch I



Flamingo Fire Management Action Points		
Management Action Point	Condition:	Actions:
MAP #31	Fire crosses or is anticipated to cross MAP 31	Continue to stay in contact with Florida Forest Service. Provide structure protection to identified values at risk. Notify Seminole Tribe.
MAP #32	Fire crosses or is anticipated to cross MAP 32	Protect values at risk
MAP #33	Fire crosses or is anticipated to cross MAP 33	Provide for public safety along I-75 corridor. Notify Law enforcement agencies to potential smoke impacts to I-75 (Florida Highway Patrol, FDOT)
MAP #34	Fire crosses or is anticipated to cross MAP 34	Provide structure protection along 29 corridor. Continue to coordinate with Panther NWR.
MAP #36	Fire crosses or is anticipated to cross MAP 36	Continue to coordinate with Panther NWR. Continue long term planning to the east.

Avian Complex
FL-BCP-018031
Operations
 May 11, 2018
 Branch I
Flamingo

6,637 acres
 Approximate Perimeter
 as of 5/10/18 @ 0215 hrs



- Completed Line
- Masticator Line
- Uncontrolled Fire Edge
- Event Polygon
- Maximum Manageable Area
- Dip Site
- Helispot
- Water Source
- Pump Location
- Management Action Point
- Fire History 2015 & 2016
- Fire History 2017
- Fire History 2018
- Big Cypress National Preserve
- Temporary Flight Restriction
- Campground
- Canoe Access
- Office
- Park/Rest Area
- Trailhead
- Private Structures
- NPS Property

0 1 2 Miles

NAD83 UTM 17