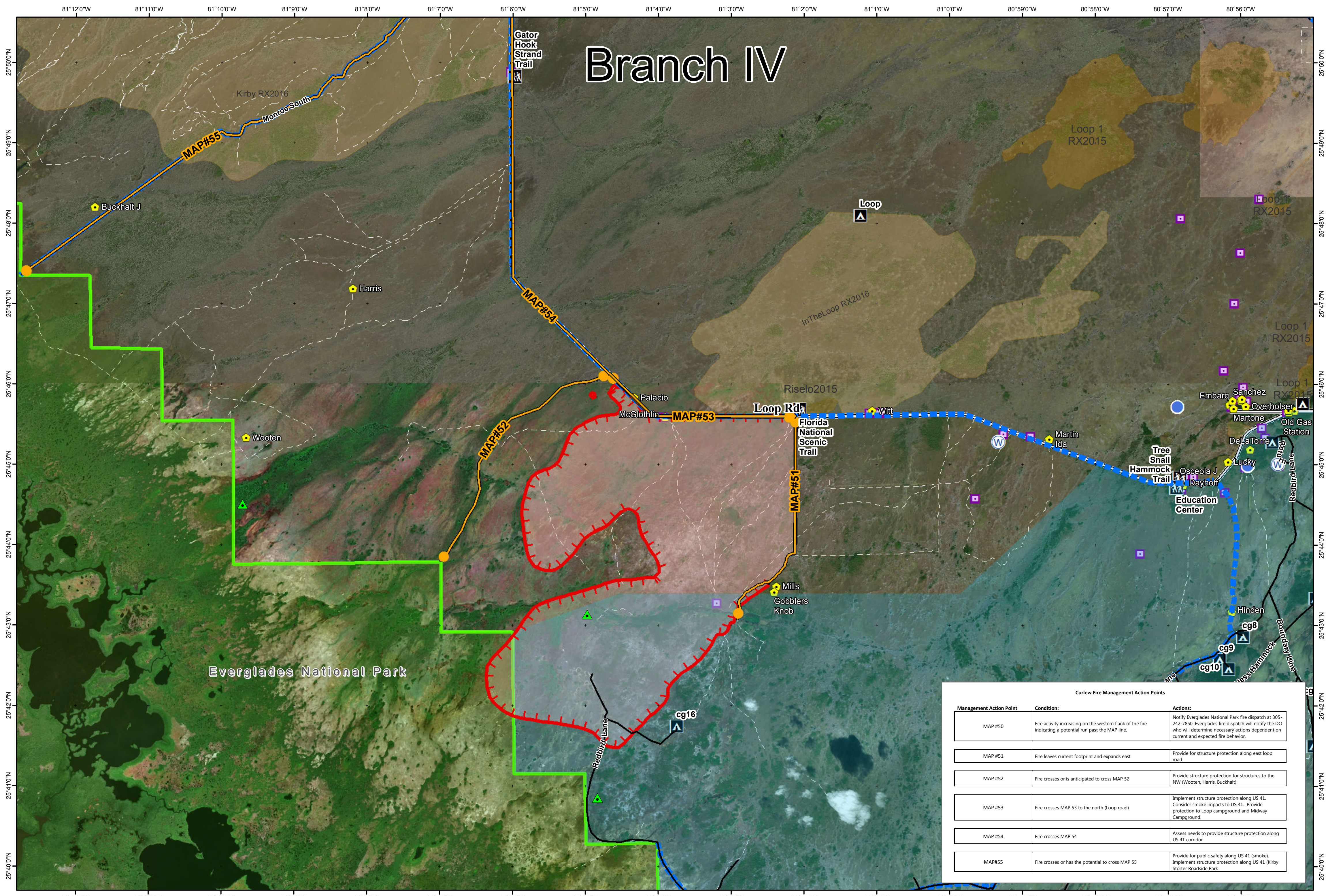


# Branch IV



**Curlew Fire Management Action Points**

Management Action Point	Condition:	Actions:
MAP #50	Fire activity increasing on the western flank of the fire indicating a potential run past the MAP line.	Notify Everglades National Park fire dispatch at 305-242-7850. Everglades fire dispatch will notify the DO who will determine necessary actions dependent on current and expected fire behavior.
MAP #51	Fire leaves current footprint and expands east	Provide for structure protection along east loop road
MAP #52	Fire crosses or is anticipated to cross MAP 52	Provide structure protection for structures to the NW (Wooten, Harris, Buckhalt)
MAP #53	Fire crosses MAP 53 to the north (Loop road)	Implement structure protection along US 41. Consider smoke impacts to US 41. Provide protection to Loop campground and Midway Campground.
MAP #54	Fire crosses MAP 54	Assess needs to provide structure protection along US 41 corridor
MAP#55	Fire crosses or has the potential to cross MAP 55	Provide for public safety along US 41 (smoke). Implement structure protection along US 41 (Kirby Storter Roadside Park)

**Avian Complex**  
**FL-BCP-018031**  
**Operations**  
 May 13, 2018  
 Branch IV  
**Curlew**

8,339 acres  
 Approximate Perimeter  
 as of 5/12/18 @ 1400 hrs



- Completed Line
- Uncontrolled Fire Edge
- Event Polygon
- Management Action Point

- Dip Site
- Division Break
- Helispot
- Water Source
- eagle nests

- Fire History 2017
- Fire History 2015 & 2016
- Everglades National Park
- Big Cypress National Preserve

- Zone 4 Low Water Closure
- Maximum Manageable Area

- Campground
- Canoe Access
- Office
- Park/Rest Area
- Trailhead
- Private Structures
- NPS Property

0 1 2 Miles

NAD83 UTM 17

