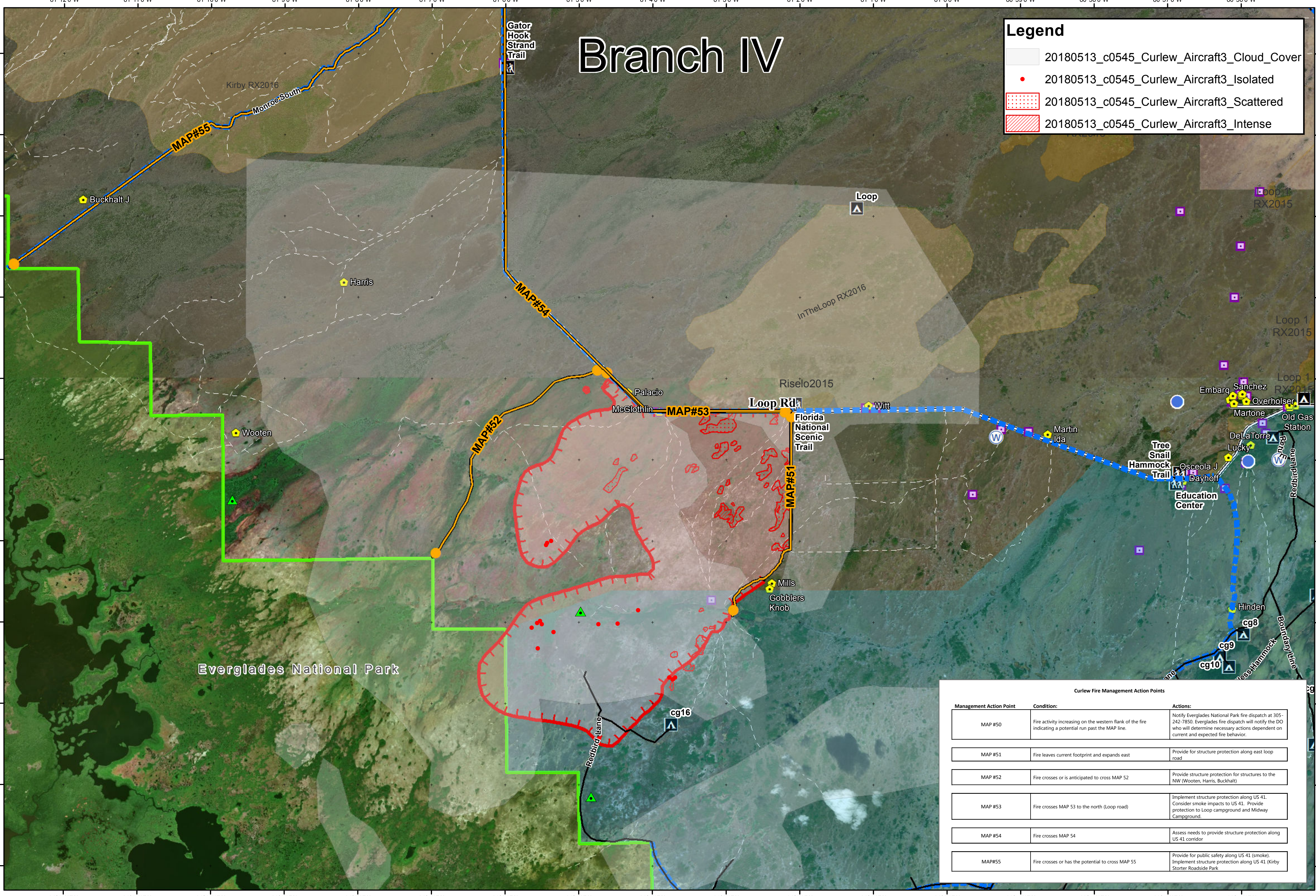


Branch IV

Legend

- 20180513_c0545_Curlew_Aircraft3_Cloud_Cover
- 20180513_c0545_Curlew_Aircraft3_Isolated
- 20180513_c0545_Curlew_Aircraft3_Scattered
- 20180513_c0545_Curlew_Aircraft3_Intense



Curlew Fire Management Action Points

Management Action Point	Condition:	Actions:
MAP #50	Fire activity increasing on the western flank of the fire indicating a potential run past the MAP line.	Notify Everglades National Park fire dispatch at 305-242-7850. Everglades fire dispatch will notify the DO who will determine necessary actions dependent on current and expected fire behavior.
MAP #51	Fire leaves current footprint and expands east	Provide for structure protection along east loop road
MAP #52	Fire crosses or is anticipated to cross MAP 52	Provide structure protection for structures to the NW (Wooten, Harris, Buckhalt)
MAP #53	Fire crosses MAP 53 to the north (Loop road)	Implement structure protection along US 41. Consider smoke impacts to US 41. Provide protection to Loop campground and Midway Campground.
MAP #54	Fire crosses MAP 54	Assess needs to provide structure protection along US 41 corridor
MAP#55	Fire crosses or has the potential to cross MAP 55	Provide for public safety along US 41 (smoke). Implement structure protection along US 41 (Kirby Storter Roadside Park)

Avian Complex
FL-BCP-018031
Operations - IR
 May 13, 2018
 Branch IV
Curlew

8,339 acres
 Approximate Perimeter
 as of 5/12/18 @ 1400 hrs

- Completed Line
- Uncontrolled Fire Edge
- Event Polygon
- Management Action Point
- Dip Site
- Division Break
- Helispot
- Water Source
- eagle nests

- Fire History 2017
- Fire History 2015 & 2016
- Everglades National Park
- Big Cypress National Preserve

- Zone 4 Low Water Closure
- Maximum Manageable Area

- Campground
- Canoe Access
- Office
- Park/Rest Area
- Trailhead
- Private Structures
- NPS Property

0 1 2 Miles
 NAD83 UTM 17

