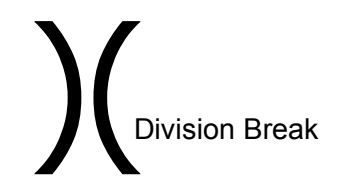


Avian Complex
 FL-BCP-018031
Operations
 May 15, 2018
 Day Shift
Buzzard



Approximate Perimeter
 as of 5/13/18 @ 0545 hrs.

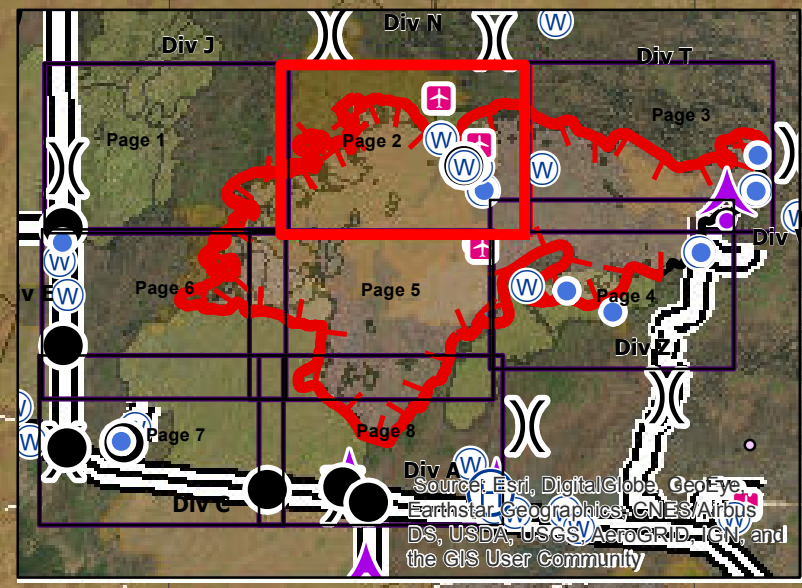
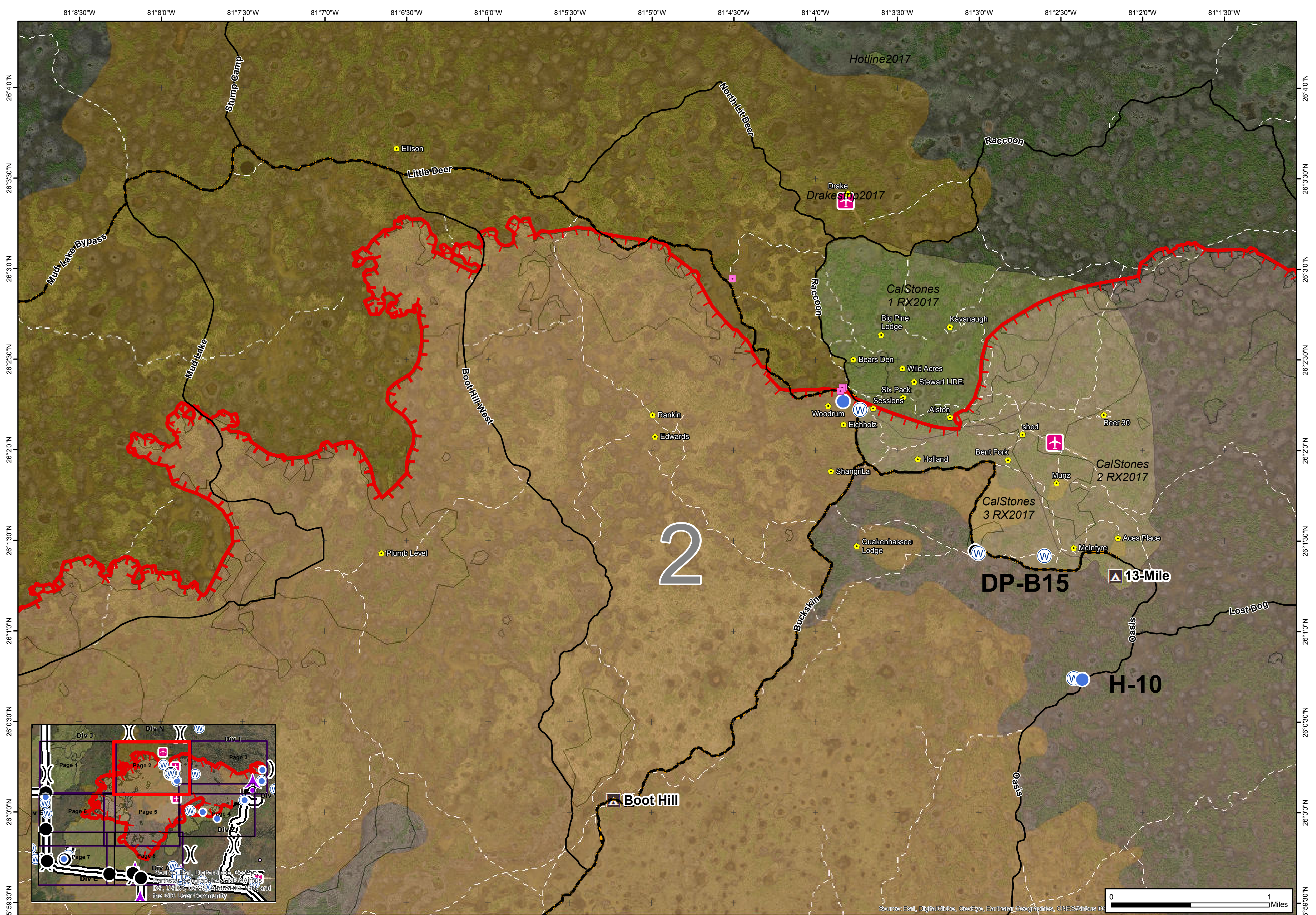


- Drop Point
- camps
- NPS Property
- Maximum Manageable Area
- ▬ Uncontrolled Fire Edge
- EventPolygon
- Big Cypress National Preserve
- Historic Fire Perimeter
- Fire History 2015 & 2016
- FiresAndBurns_2015
- ▬ Temporary Vehicle Access Route



NAD83 UTM 17



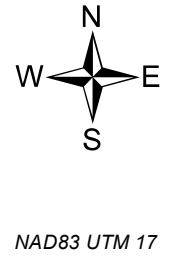


Avian Complex
 FL-BCP-018031
Operations
 May 15, 2018
 Day Shift
Buzzard

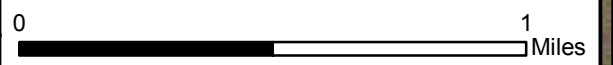


62,404 acres
 Approximate Perimeter
 as of 5/13/18 @ 0545 hrs.

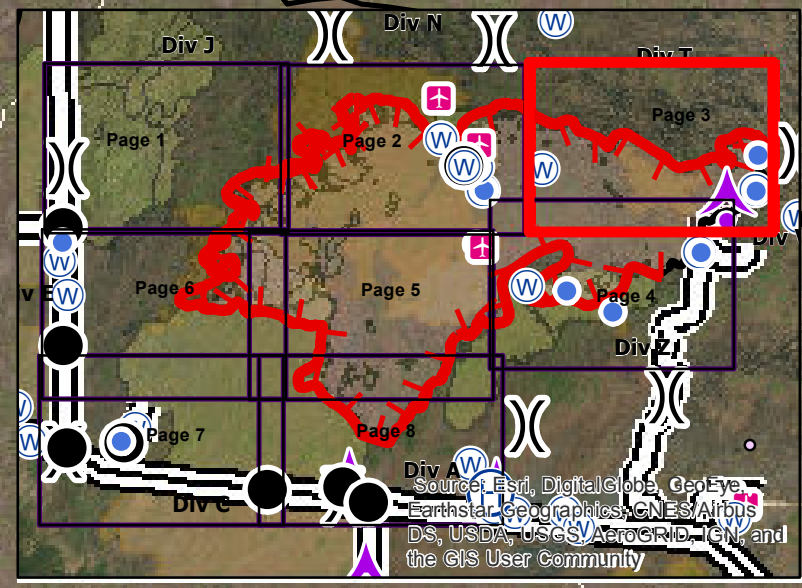
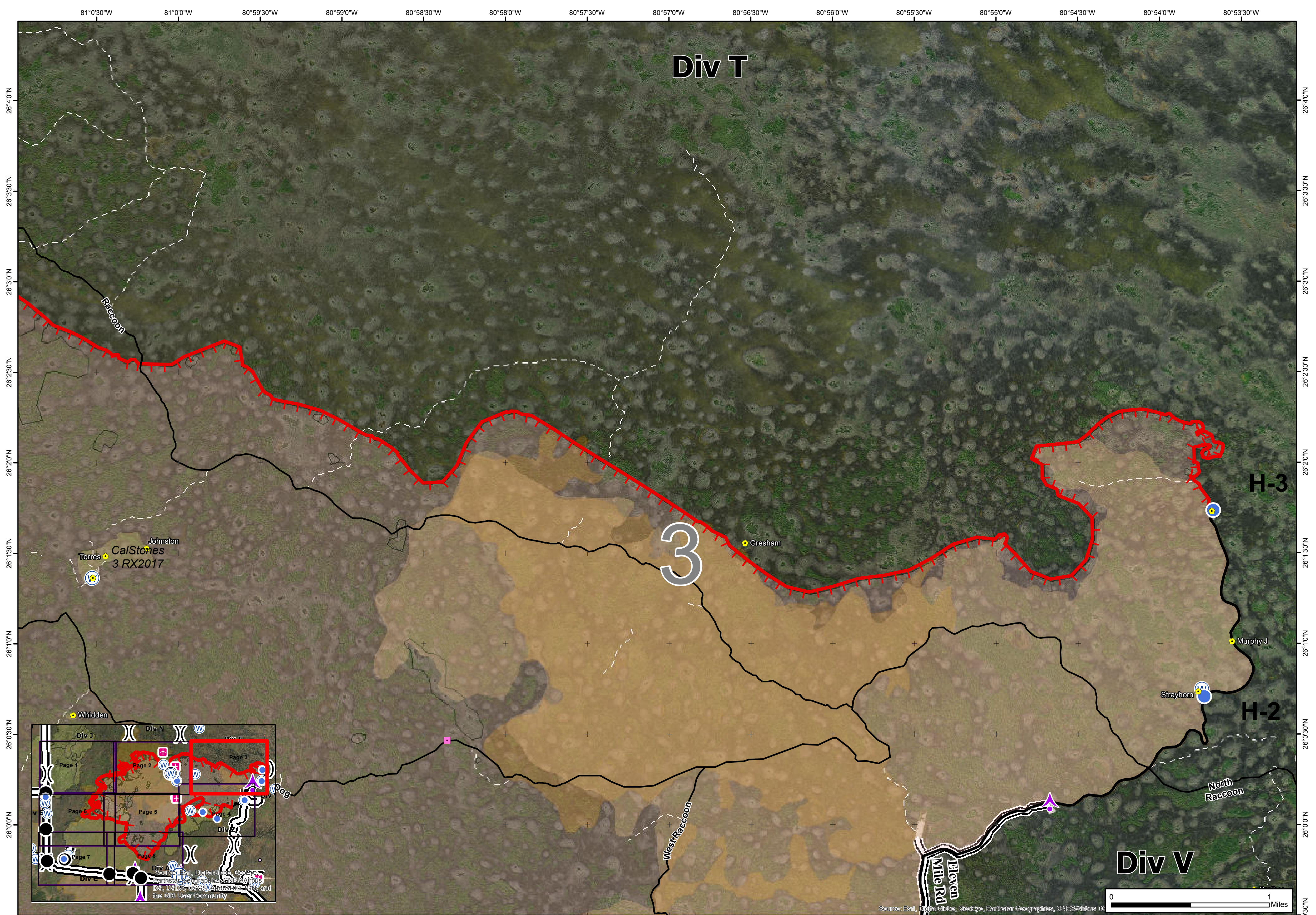
- Airstrip or Airport
- Drop Point
- Water Source
- Campground
- Maximum Manageable Area
- Event Polygon
- Historic Fire Perimeter
- Uncontrolled Fire Edge
- Big Cypress National Preserve
- FiresAndBurns_2015
- Temporary Vehicle Access Route
- Helispot
- camps
- NPS Property




NAD83 UTM 17




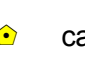
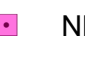

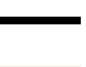








Source: Esri, DigitalGlobe, GeoEye, Earthstar Geographics, CNES/Airbus DS



Avian Complex
 FL-BCP-018031
Operations
 May 15, 2018
 Day Shift
Buzzard



 62,404 acres
 Approximate Perimeter
 as of 5/13/18 @ 0545 hrs.

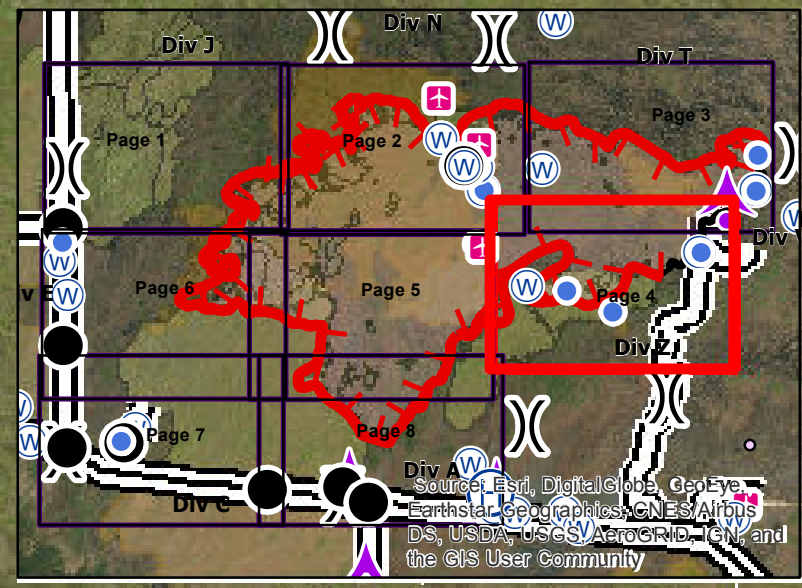
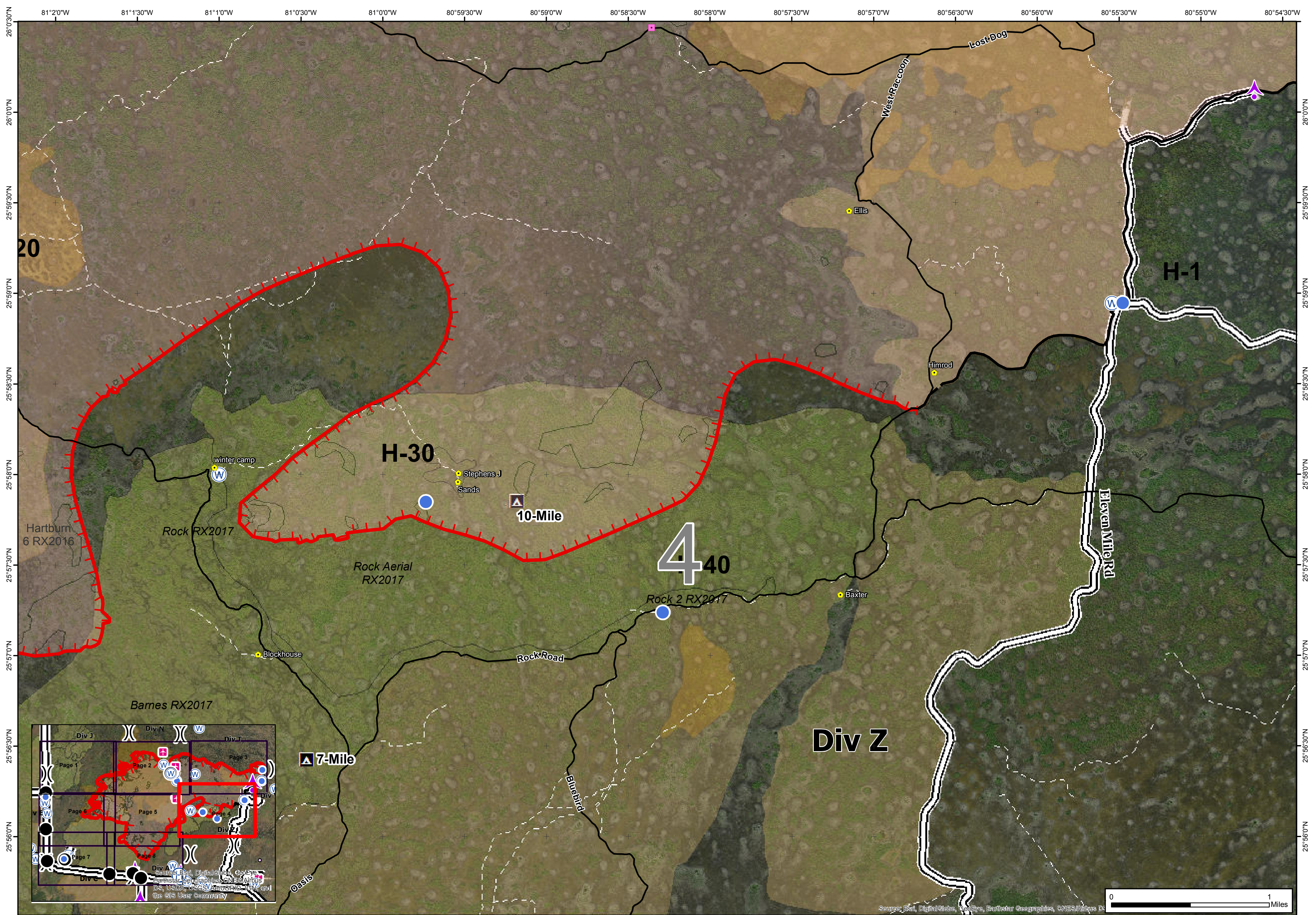
-  Aerial Hazard
-  Helispot
-  Water Source
-  camps
-  NPS Property
-  Maximum Manageable Area
-  Completed Line
-  Uncontrolled Fire Edge
-  Event Polygon
-  Big Cypress National Preserve
-  Historic Fire Perimeter
-  FiresAndBurns_2018
-  FiresAndBurns_2015

0 1 Miles


N
 W — E
 S










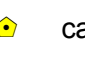
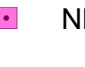
NAD83 UTM 17


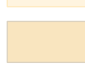





Avian Complex
 FL-BCP-018031
Operations
 May 15, 2018
 Day Shift
Buzzard

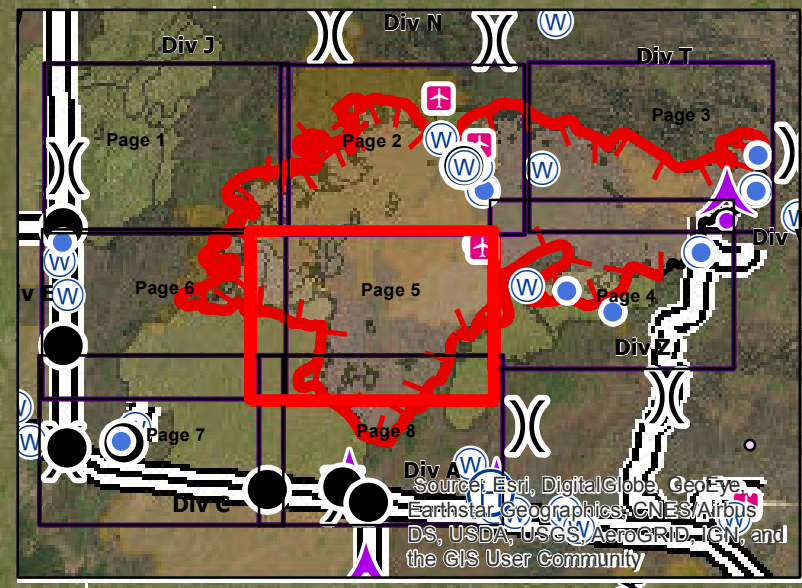
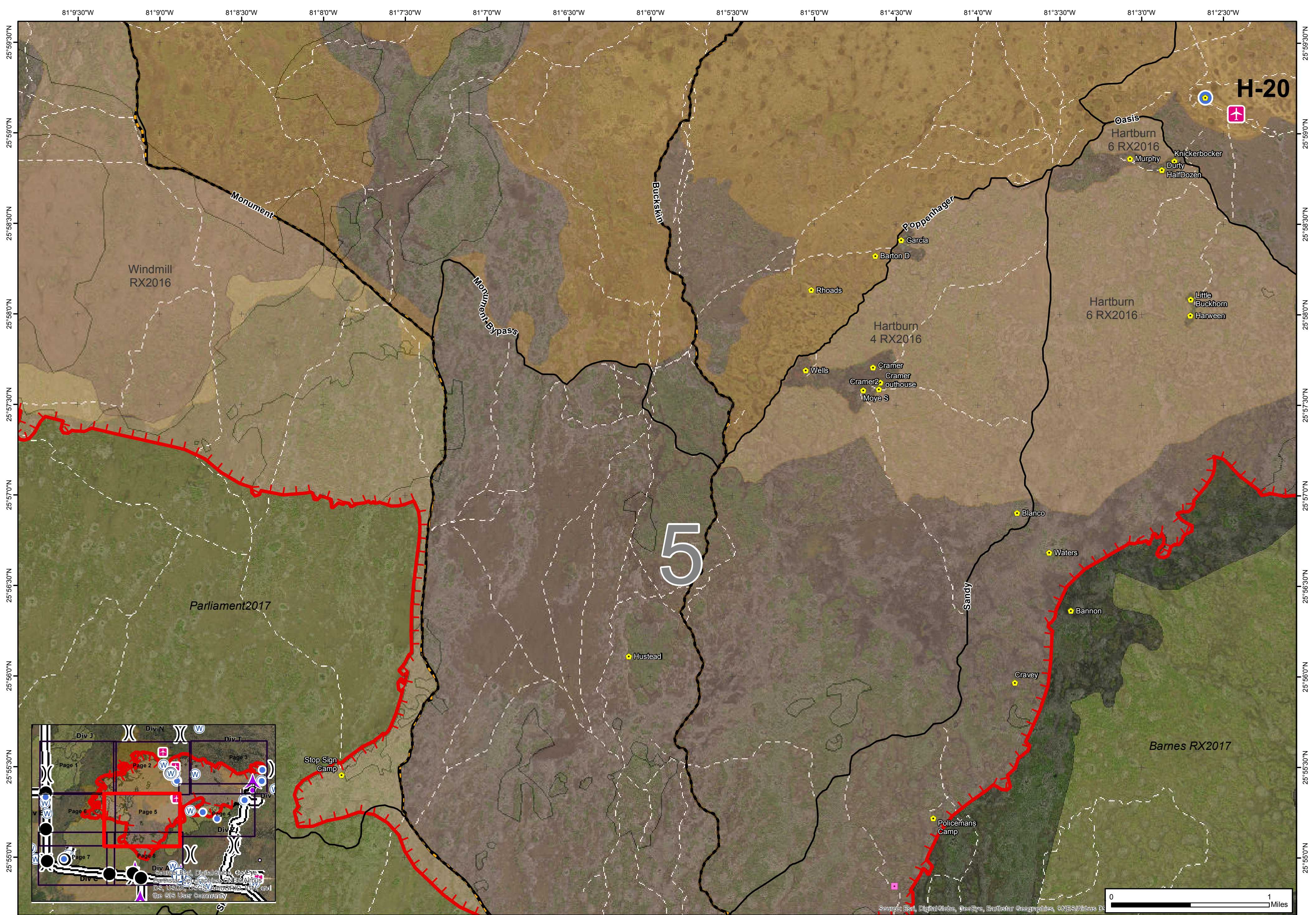

 62,404 acres
 Approximate Perimeter
 as of 5/13/18 @ 0545 hrs.

-  Aerial Hazard
-  Helispot
-  Water Source
-  Campground
-  Maximum Manageable Area
-  Event Polygon
-  Completed Line
-  Big Cypress National Preserve
-  Uncontrolled Fire Edge
-  camps
-  NPS Property

-  Historic Fire Perimeter
-  FiresAndBurns_2018
-  Fire History 2015 & 2016
-  FiresAndBurns_2015


 NAD83 UTM 17



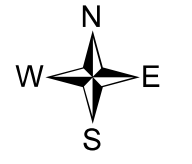


Avian Complex
 FL-BCP-018031
Operations
 May 15, 2018
 Day Shift
Buzzard



Approximate Perimeter
 as of 5/13/18 @ 0545 hrs.

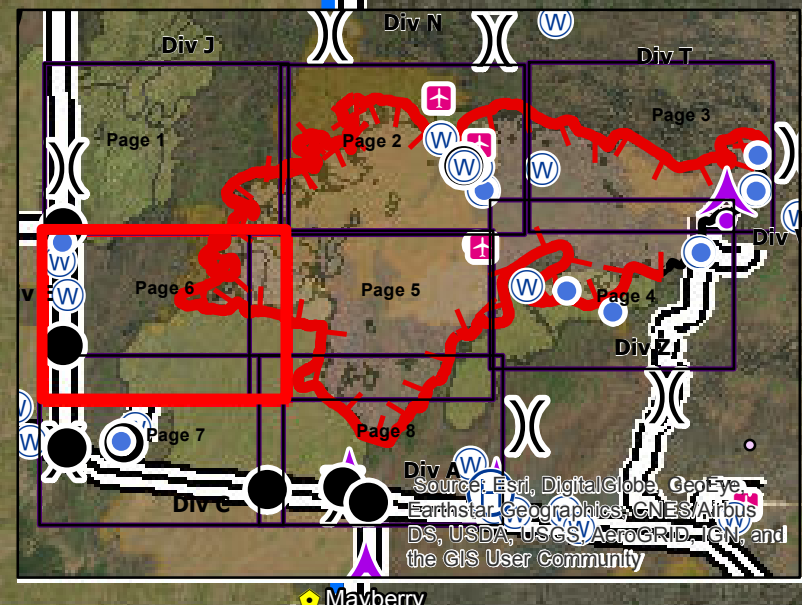
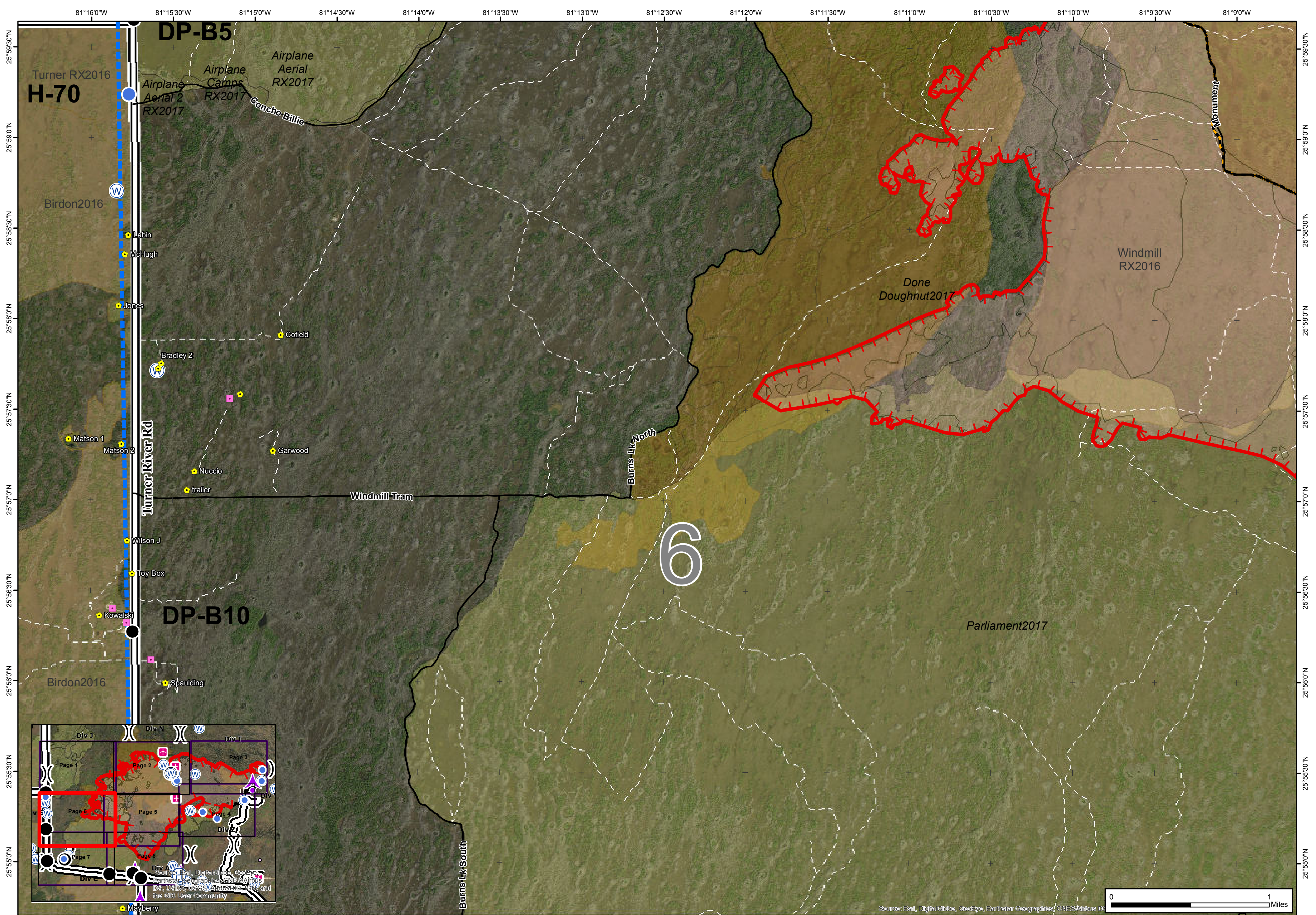
- Airstrip or Airport
- Helispot
- camps
- NPS Property
- Maximum Manageable Area
- Uncontrolled Fire Edge
- Event Polygon
- Big Cypress National Preserve
- Historic Fire Perimeter
- Fire History 2015 & 2016
- FiresAndBurns_2015
- Temporary Vehicle Access Route



NAD83 UTM 17



Source: Esri, DigitalGlobe, GeoEye, Earthstar Geographics, CNES/Airbus DS

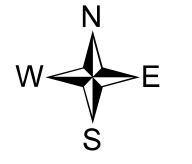


Avian Complex
 FL-BCP-018031
Operations
 May 15, 2018
 Day Shift
Buzzard

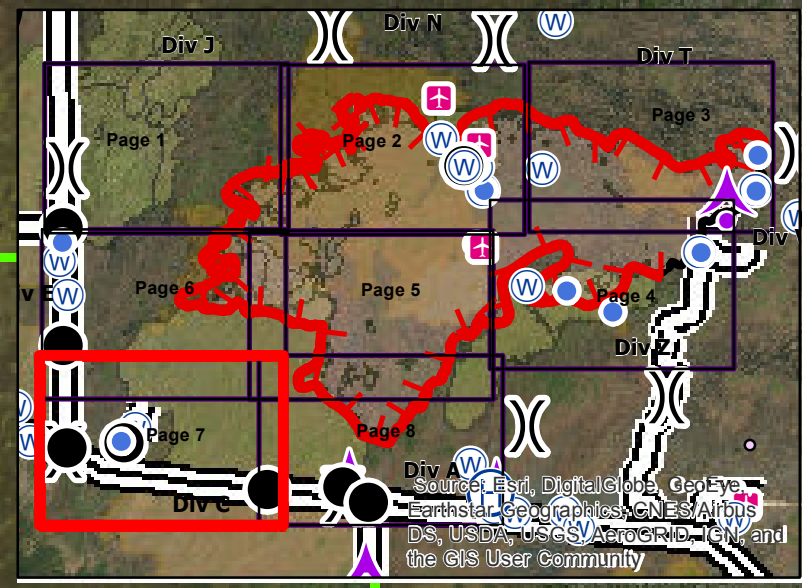
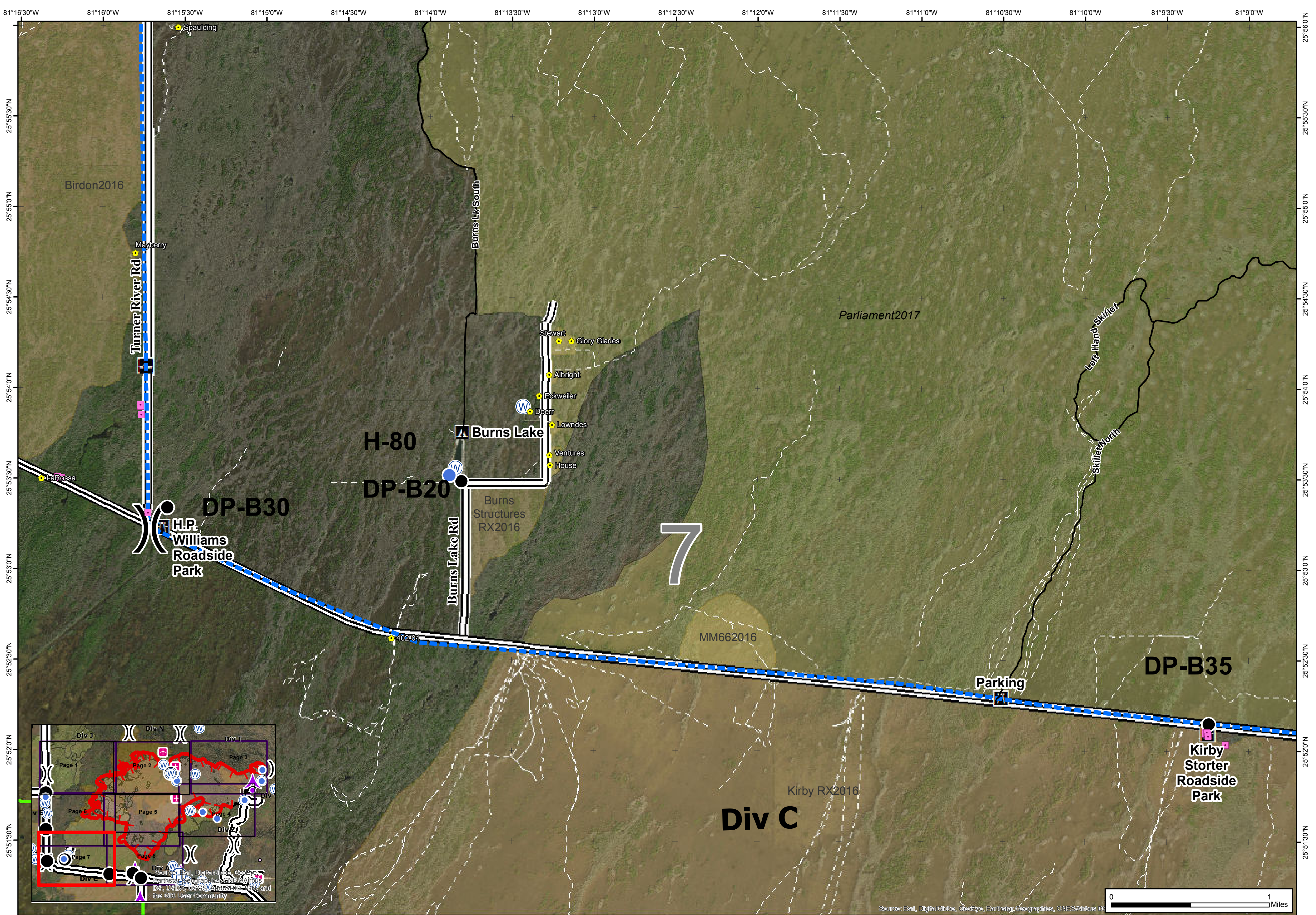


62,404 acres
 Approximate Perimeter
 as of 5/13/18 @ 0545 hrs.

- Drop Point
- Helispot
- Ⓜ Water Source
- Ⓜ camps
- Ⓜ NPS Property
- ▭ Maximum Manageable Area
- ▭ Uncontrolled Fire Edge
- ▭ EventPolygon
- ▭ Big Cypress National Preserve
- ▭ Historic Fire Perimeter
- ▭ Fire History 2015 & 2016
- ▭ FiresAndBurns_2015
- ▭ Temporary Vehicle Access Route



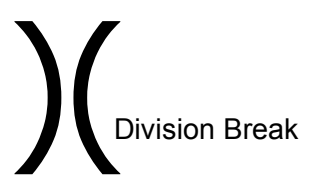
NAD83 UTM 17



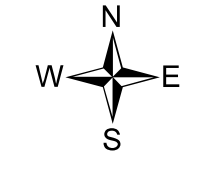
Avian Complex
 FL-BCP-018031
Operations
 May 15, 2018
 Day Shift
Buzzard



Approximate Perimeter
 as of 5/13/18 @ 0545 hrs.



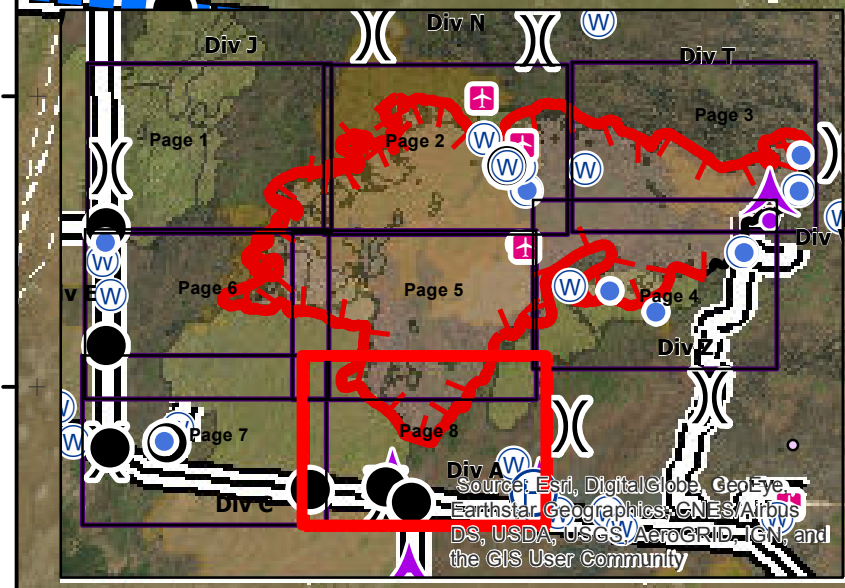
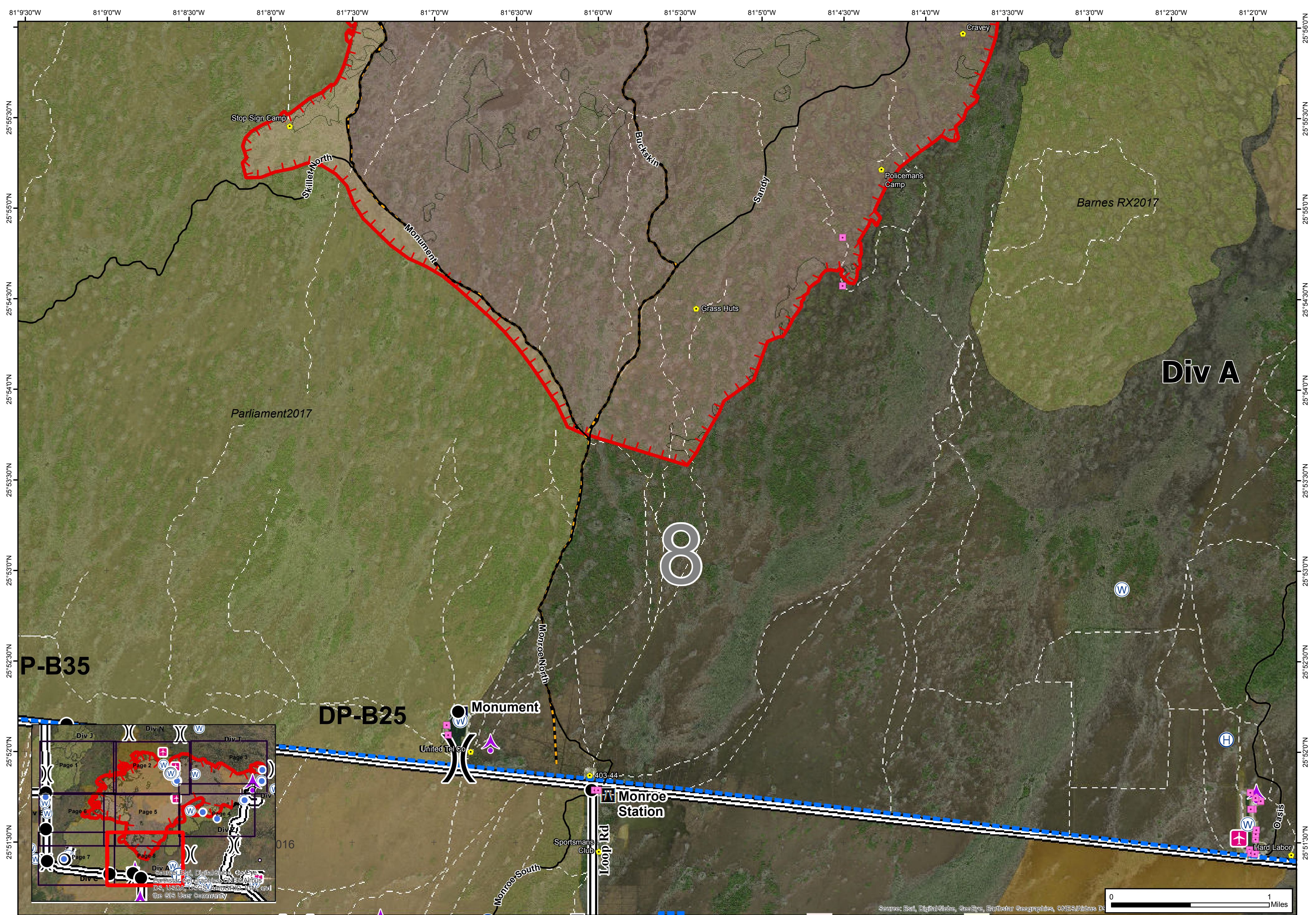
- Drop Point
- Helispot
- Ⓜ Water Source
- ⬠ camps
- ⬠ NPS Property
- ⬠ Campground
- ⬠ Canoe Access
- ⬠ Park/Rest Area
- ⬠ Maximum Manageable Area
- ⬠ Big Cypress National Preserve
- ⬠ Historic Fire Perimeter
- ⬠ Fire History 2015 & 2016



NAD83 UTM 17



Source: Esri, DigitalGlobe, GeoEye, Earthstar, Geographics, CNES/Airbus DS



Avian Complex
 FL-BCP-018031
Operations
 May 15, 2018
 Day Shift
Buzzard

SOUTHERN AREA GOLD TEAM INCIDENT MANAGEMENT

62,404 acres
 Approximate Perimeter as of 5/13/18 @ 0545 hrs.

- Division Break
- Aerial Hazard
- Airstrip or Airport
- Drop Point
- Helibase
- Water Source
- camps
- NPS Property
- Campground
- Office
- Park/Rest Area
- Maximum Manageable Area
- Uncontrolled Fire Edge
- EventPolygon
- Big Cypress National Preserve
- Historic Fire Perimeter
- FiresAndBurns_2018
- Fire History 2015 & 2016
- FiresAndBurns_2015
- Temporary Vehicle Access Route

Source: Esri, DigitalGlobe, GeoEye, Earthstar Geographics, CNES/Airbus DS

0 1 Miles

N
 W E
 S

NAD83 UTM 17