

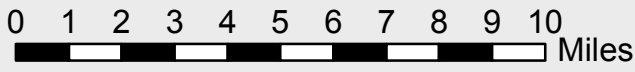
Avian Complex Fire Information

5/15/2018

U.S. Department of the Interior
Big Cypress National Preserve
33100 Tamiami Trail East
Ochopee, FL 34141

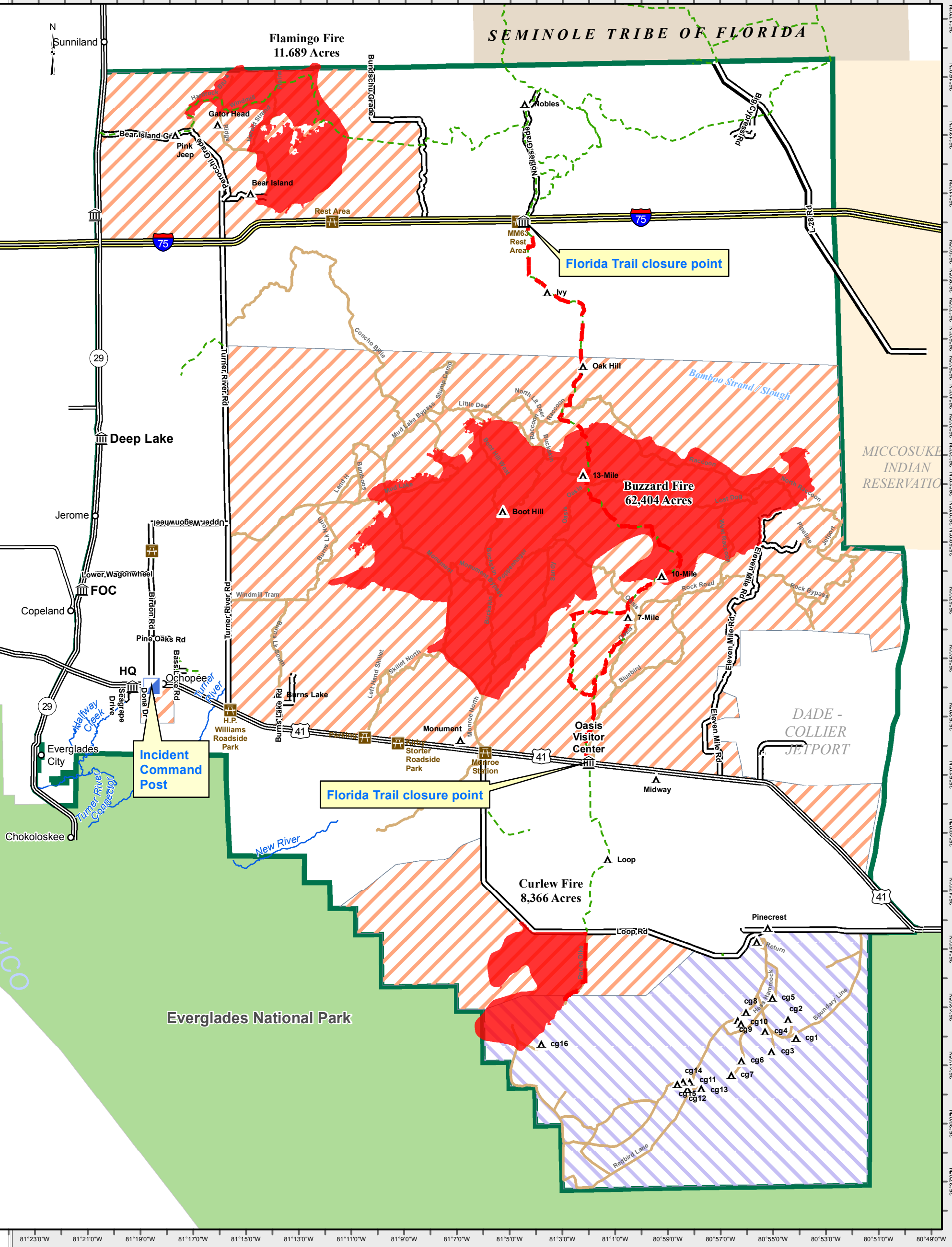


AREA CLOSURE IN EFFECT and TRAIL CLOSURES IN EFFECT:
* Florida Trail (hiking)
* All Trails Within Closure Areas



- Incident Command Post
- Trail Closures
- Fire Area Closures
- Fire Perimeters
- Everglades National Park
- Zone 4 Low Water Closure
- Primary Buggy Trail
- Hiking Trail
- BICY boundary

81°23'0"W 81°21'0"W 81°19'0"W 81°17'0"W 81°15'0"W 81°13'0"W 81°11'0"W 81°9'0"W 81°7'0"W 81°5'0"W 81°3'0"W 81°1'0"W 80°59'0"W 80°57'0"W 80°55'0"W 80°53'0"W 80°51'0"W 80°49'0"W



26°17'0"N 26°15'0"N 26°13'0"N 26°11'0"N 26°9'0"N 26°7'0"N 26°5'0"N 26°3'0"N 26°1'0"N 25°59'0"N 25°57'0"N 25°55'0"N 25°53'0"N 25°51'0"N 25°49'0"N 25°47'0"N 25°45'0"N 25°43'0"N 25°41'0"N 25°39'0"N 25°37'0"N

WCO