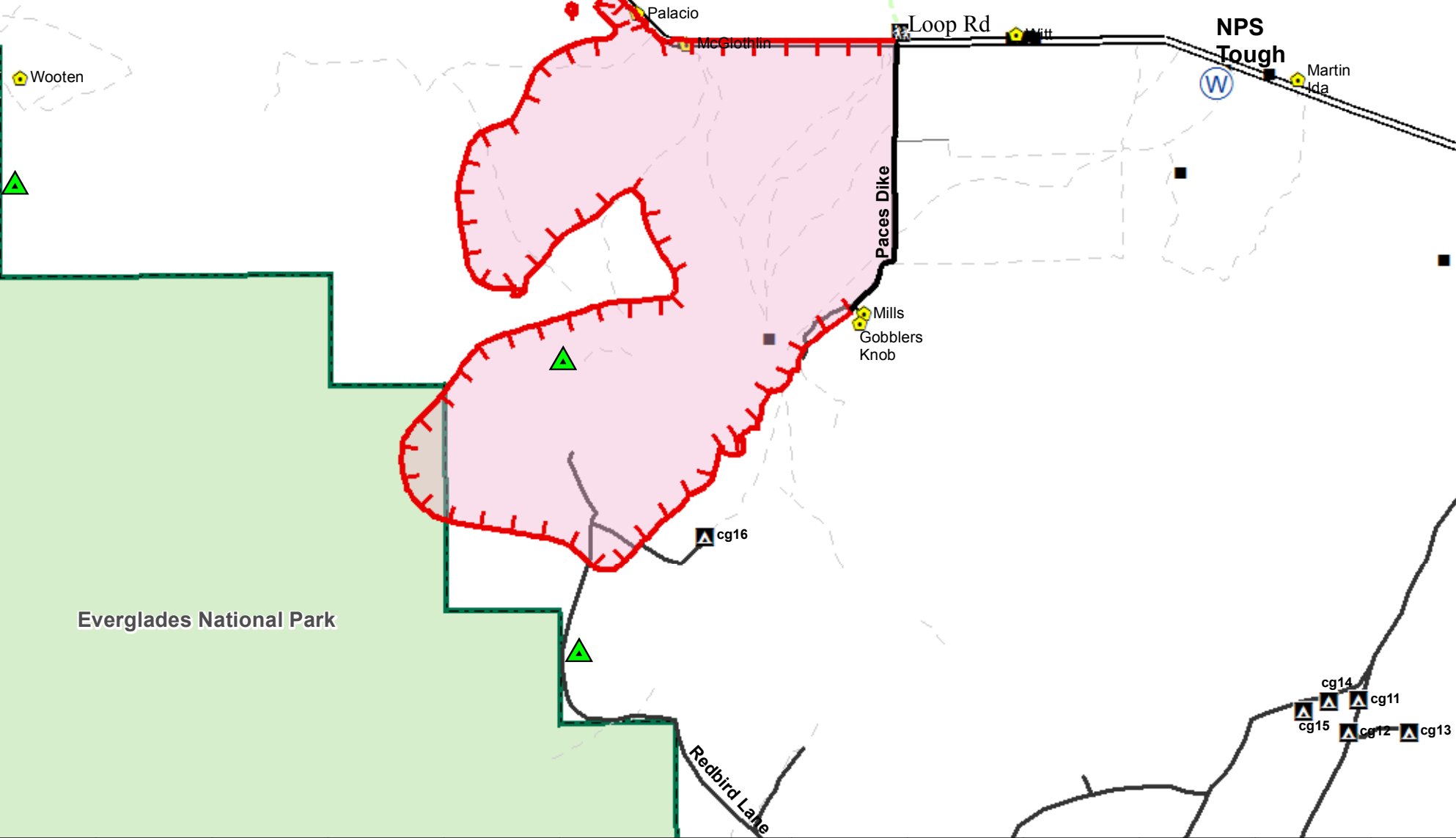


# Branch IV




Everglades National Park

Redbird Lane

NPS Tough

FL-BCP-018031  
**Avian Complex Curlew**  
**8,366 acres**  
 Operational Period: May 16, 2018  
 Perimeter current as of May 13 (0545 hrs by IR)  
 Datum: NAD 83

## Legend

-  Uncontrolled Fire Edge
-  Wildfire Daily Fire Perimeter
-  Camp, Private
-  Camp, NPS
-  Improved Road
-  Canal
-  BICY boundary
-  Dip Site
-  Helispot
-  Water Source
-  Division Break
-  eaglenests



BIG CYPRESS NATIONAL PRESERVE  
U.S. FISH & WILDLIFE SERVICE  
R4 - ZONE B



U.S. FISH & WILDLIFE SERVICE



SOUTHERN AREA GOLD TEAM INCIDENT MANAGEMENT





0 1 2 3 Miles