

Legend

24h_lightning

Polarity

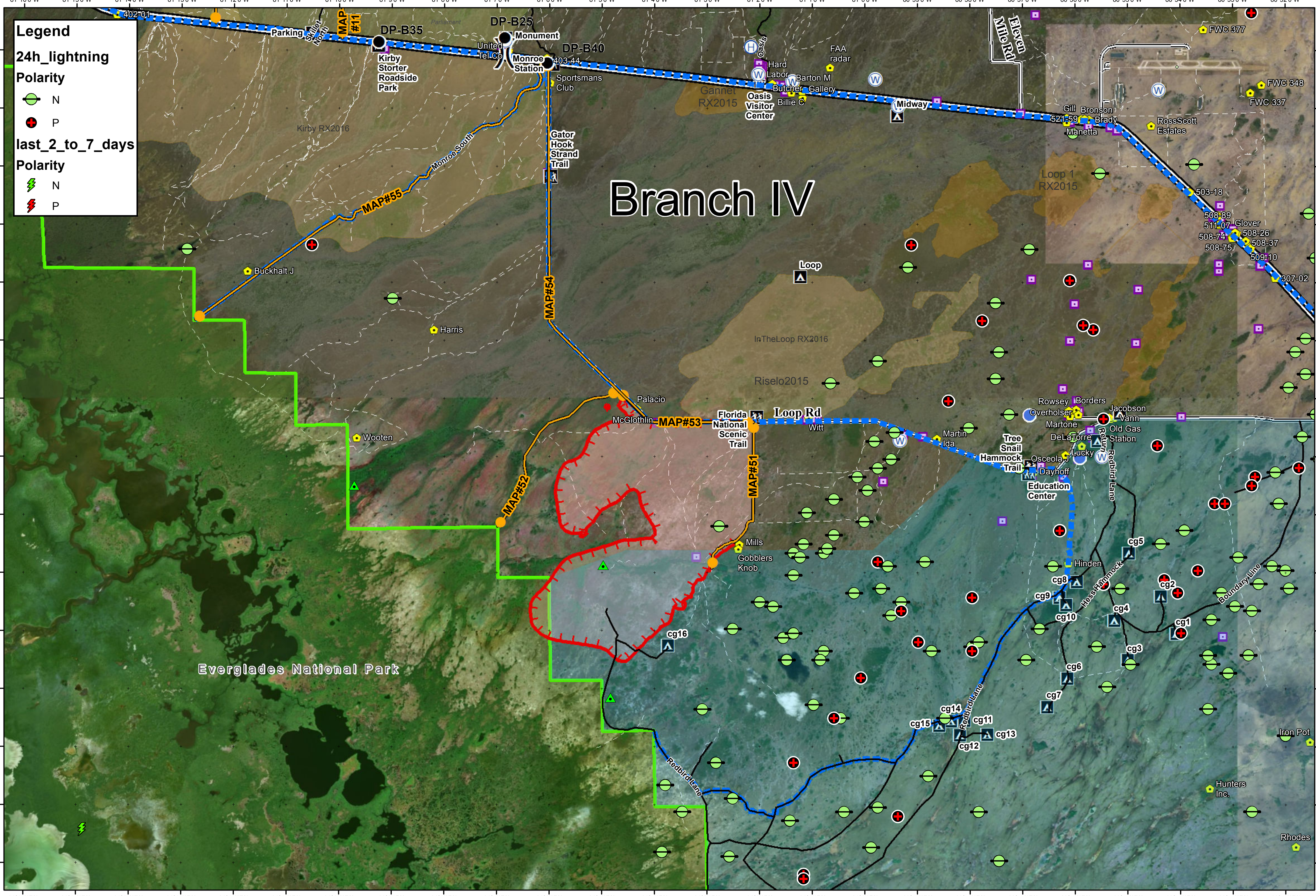
- N
- P

last_2_to_7_days

Polarity

- N
- P

Branch IV



Avian Complex
FL-BCP-018031
Operations - Lightning
May 16, 2018
Branch IV
Curlew

8,366 acres
 Approximate Perimeter
 as of 5/13/18 @ 0545 by IR

- Completed Line
- Uncontrolled Fire Edge
- Event Polygon
- Management Action Point
- Dip Site
- Division Break
- Helispot
- Water Source
- eagle nests

- Fire History 2017
- Fire History 2015 & 2016
- Everglades National Park
- Big Cypress National Preserve

- Zone 4 Low Water Closure
- Maximum Manageable Area

- Campground
- Canoe Access
- Office
- Park/Rest Area

- Trailhead
- Private Structures
- NPS Property

0 1 2 Miles
 NAD83 UTM 17

