

**Legend**

**24h\_lightning**

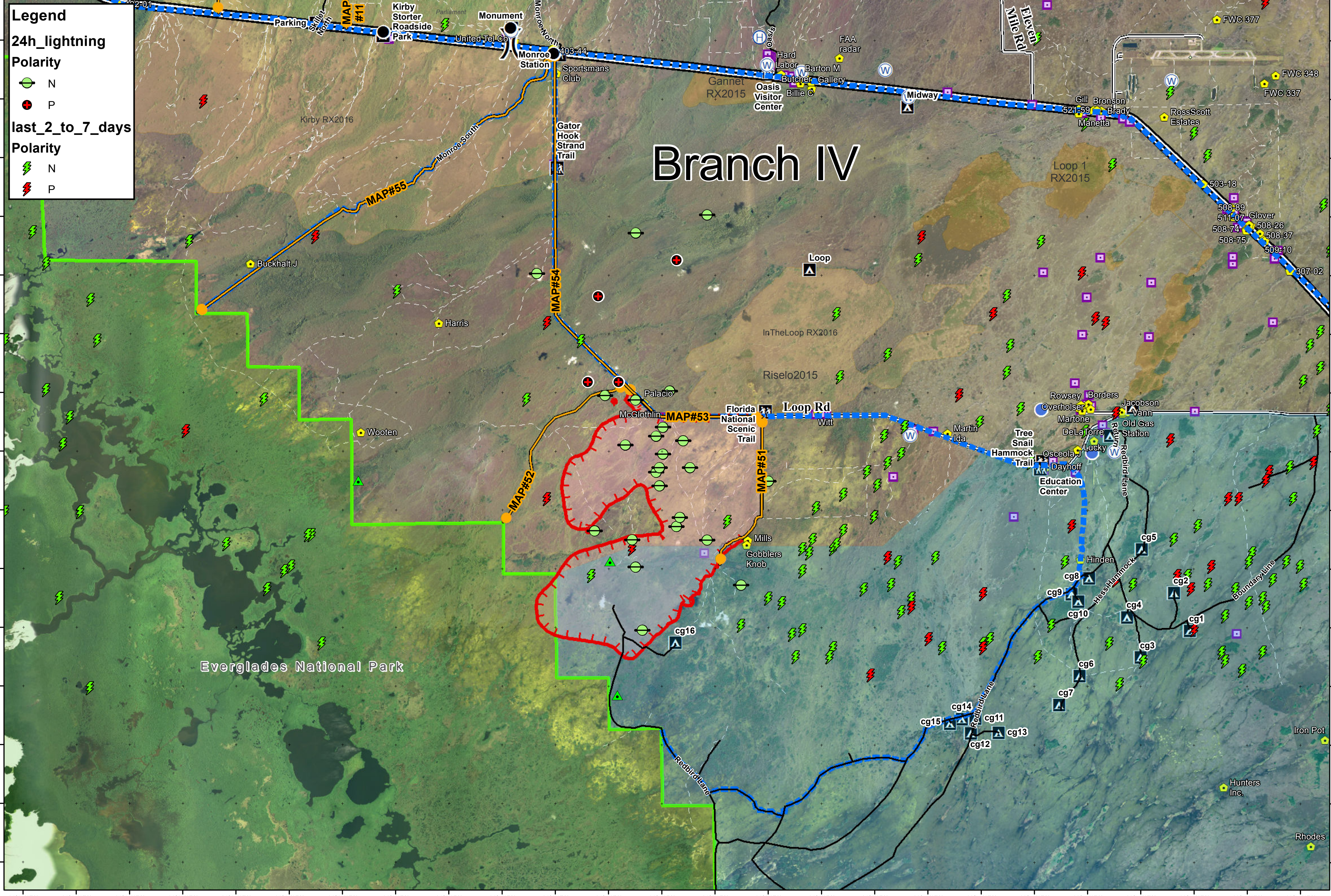
**Polarity**

- N (Green circle with lightning bolt)
- P (Red circle with lightning bolt)

**last\_2\_to\_7\_days**

**Polarity**

- N (Green lightning bolt)
- P (Red lightning bolt)



**Avian Complex**  
**FL-BCP-018031**  
**Operations - Lightning**  
 May 18, 2018  
 Branch IV  
**Curlew**

8,366 acres  
 Approximate Perimeter  
 as of 5/18/18 @ 0600 by IR

- Completed Line
- Uncontrolled Fire Edge
- Event Polygon
- Management Action Point
- Dip Site
- Division Break
- Helispot
- Water Source
- eagle nests

- Fire History 2017
- Fire History 2015 & 2016
- Everglades National Park
- Big Cypress National Preserve

- Zone 4 Low Water Closure
- Maximum Manageable Area

- Campground
- Canoe Access
- Office
- Park/Rest Area

- Trailhead
- Private Structures
- NPS Property

0 1 2 Miles  
 NAD83 UTM 17

