

Branch I

Div BB

Flamingo

Div RR

Div OO

Branch II

Div T

Div J

Div N

Buzzard

Div V

Div E

Div C

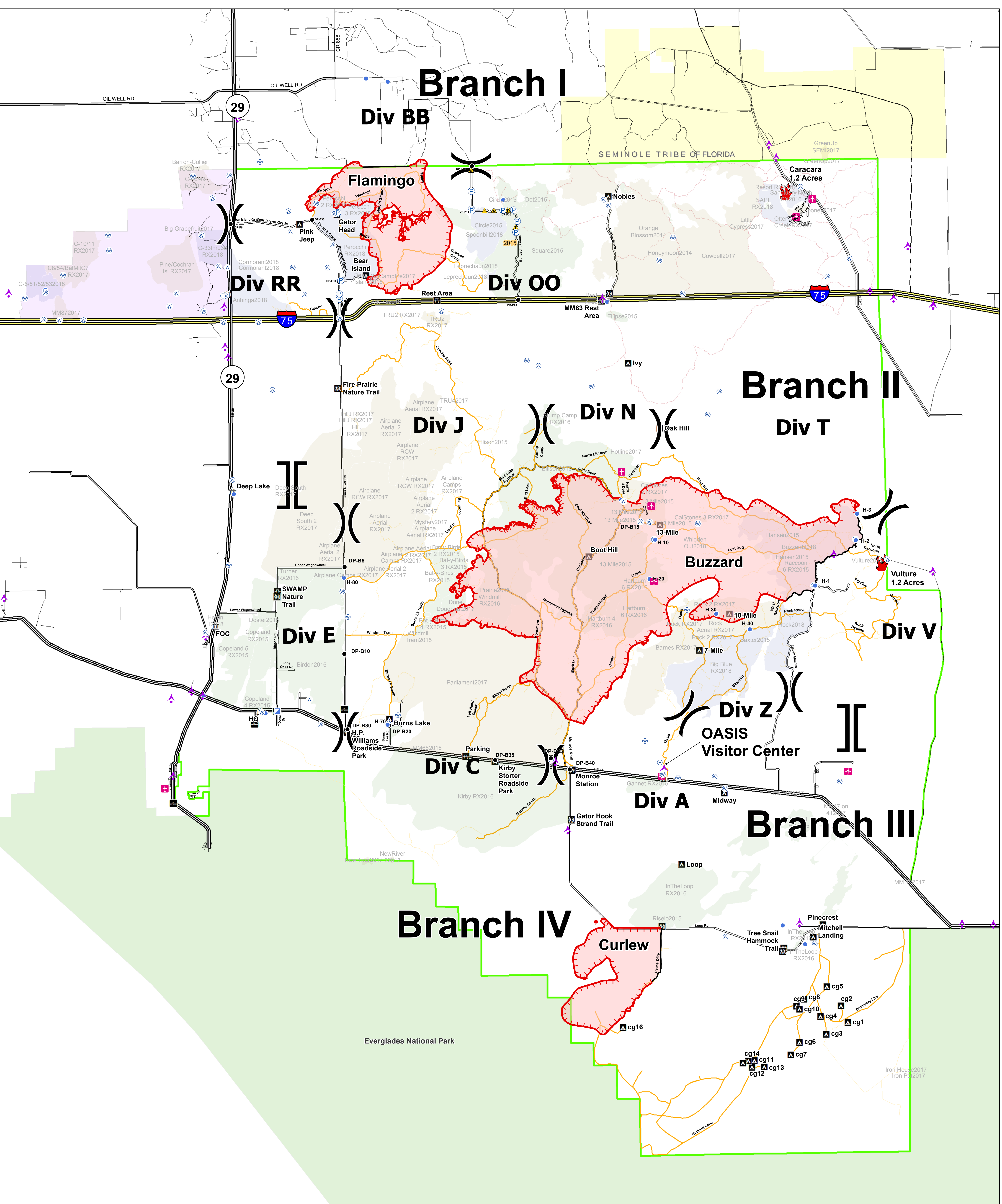
Div A

Branch III

Branch IV

Curlew

Everglades National Park



Avian Complex
FL-BCP-018031

Briefing
May 18, 2018
Day Shift



82,461 acres
Approximate Perimeter
as of 5/17/18 @ 0315 hrs.

- Completed Line
- Uncontrolled Fire Edge
- Fire Polygon
- ▲ Aerial Hazard
- ✈ Airstrip or Airport
- ⬇ Dip Site
- Drop Point
- ⊕ Helibase
- ⊙ Helispot
- ⊕ Water Source
- ⊕ Pump
- ▲ Safety Zone
- ⊕ Incident Command Post
- ⊕ Division Break
- ⊕ Branch Break

- Fire History**
- 2014 - 2016
 - 2017
 - 2018
- Roads/Trails**
- CR 29; SR 29
 - CR 951; SR 951
 - 1 - 75; 175
 - LOOP RD; LOOP RD.
 - TAMAMI TRAIL; US 41
 - Temporary Vehicle Access Route

- Improved Road
- westrds
- Buggy Trail
- Buggy Trail
- DesignatedTrails_primary_Addlands2012
- Road
- access road

- ▲ Campground
- ⊕ Canoe Access
- ⊕ Office
- ⊕ Pump-out Station
- ⊕ Park/Rest Area
- ⊕ Trailhead

