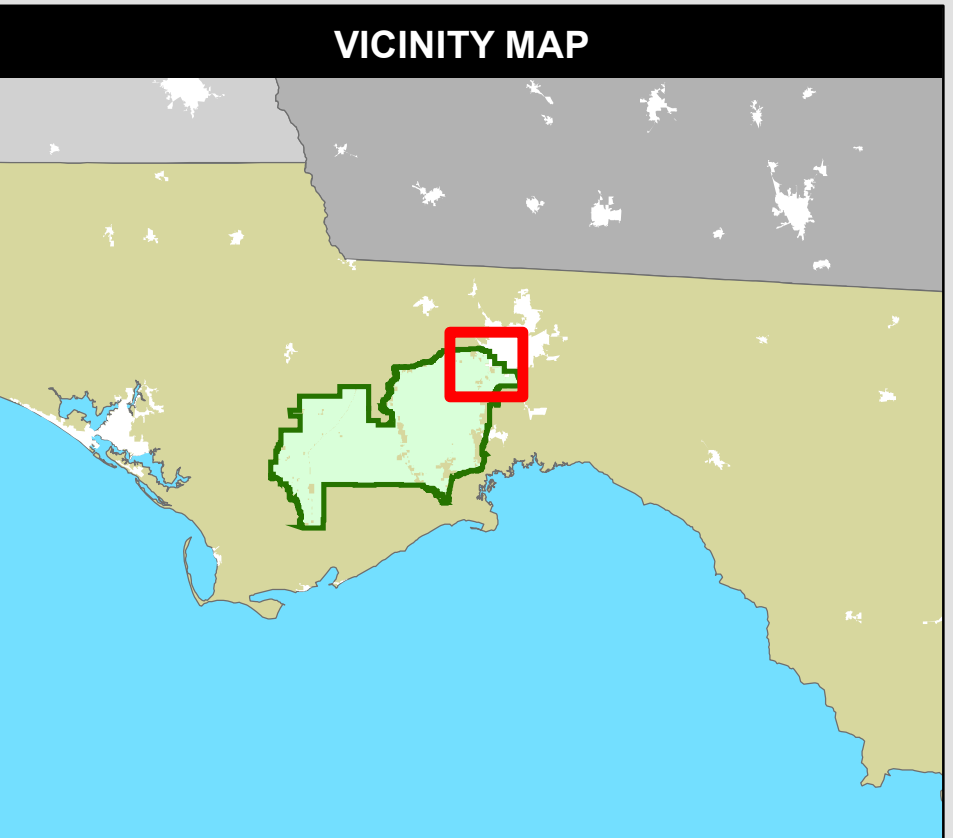


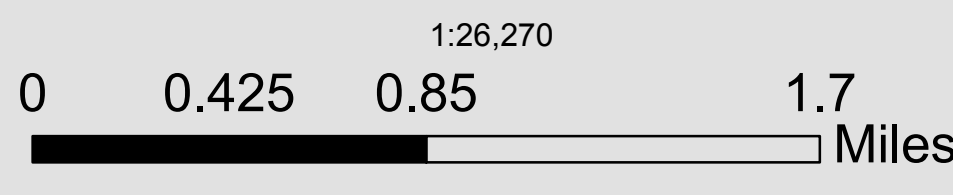
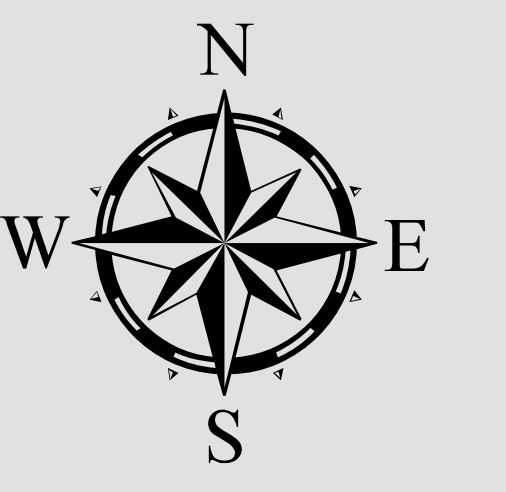
Apalachicola National Forest Wakulla Co. Forest Cleanup 2018



LEGEND

- ▲ TRASH LOCATIONS - CURRENT
- ▲ TRASH LOCATIONS - PREVIOUS
- ★ MEETING SPOT
- ▭ Sections
- TRAILS
 - ATV, UTV, MOTORCYCLE MIXED USE
 - ATV, UTV, MOTORCYCLE ONLY
 - BIKING TRAIL
 - EQUESTRIAN TRAIL
 - HIKING TRAIL
 - MOTORCYCLE ONLY
- FOREST ROADS
 - HIGH CLEARANCE ROADS, PUBLIC
 - IMPROVED ROADS, PUBLIC
 - SURFACED OR PAVED ROADS, PUBLIC
 - MAJOR ROADS
 - COUNTY ROADS
- SPECIAL INTEREST AREA
- WILDERNESS AND WSA
- FOREST BOUNDARY
- FOREST SERVICE LAND
- FOREST INHOLDINGS
- URBAN AREAS
- NON-FS LANDS

Download from Apalachicola.GIS at Cloudvault

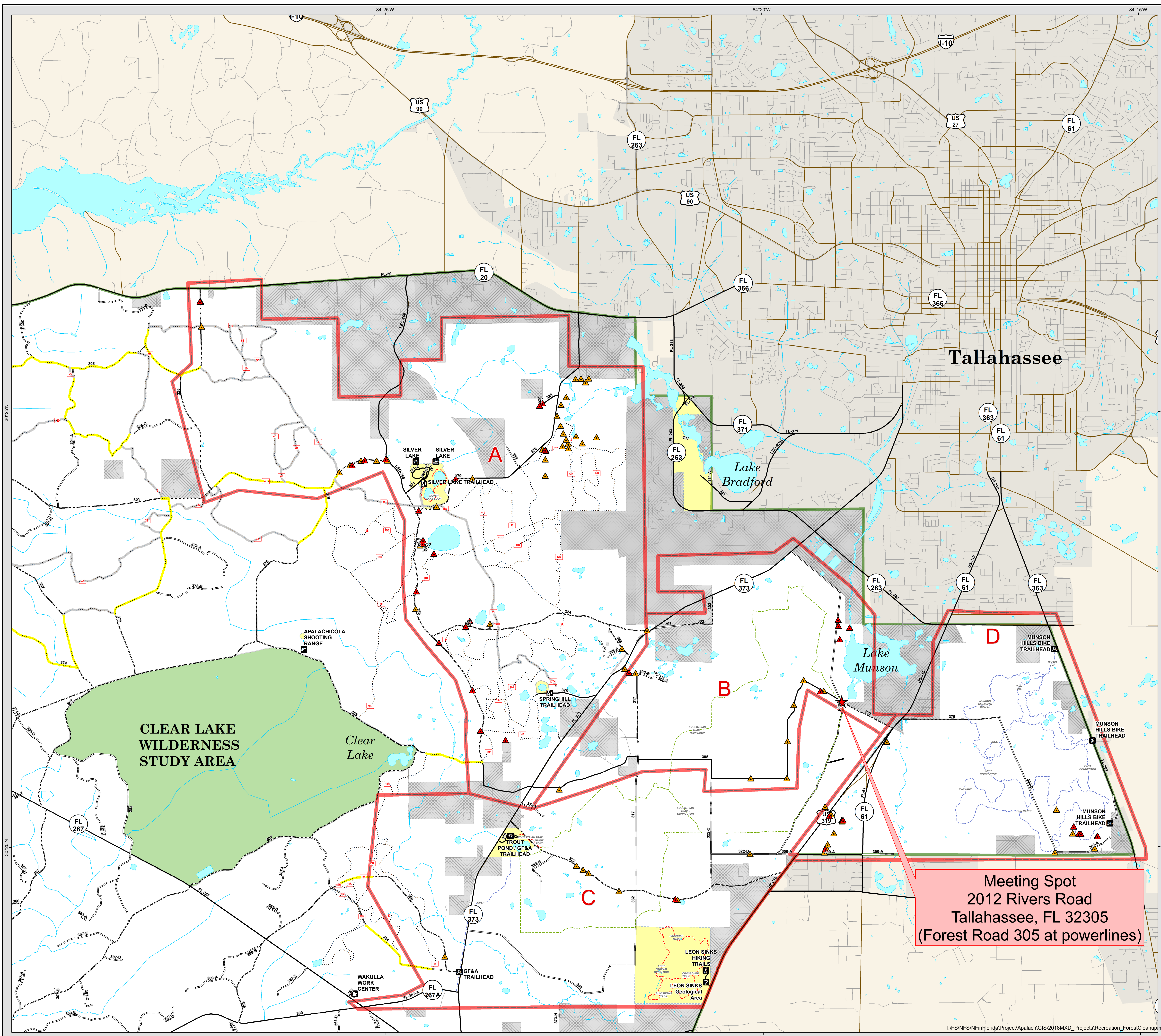


This map was produced by the Apalachicola National Forest on 2/23/2018.

This product is reproduced from geospatial information prepared by the U.S. Department of Agriculture, Forest Service. GIS data and product accuracy may vary. They may be developed from sources of differing accuracy, accurate only at certain scales, based on modeling or interpretation, incomplete while being created or revised, etc. Using GIS products for purposes other than those for which they were created may yield inaccurate or misleading results. The Forest Service reserves the right to correct, update, modify, or replace GIS products without notification.

For more information, contact: Apalachicola National Forest (850) 926-3561, 57 Taff Drive, Crawfordville, FL 32327.

Data Projection: NAD_1983_StatePlane_Florida_North_FIPS_0903_Feet



Meeting Spot
2012 Rivers Road
Tallahassee, FL 32305
(Forest Road 305 at powerlines)