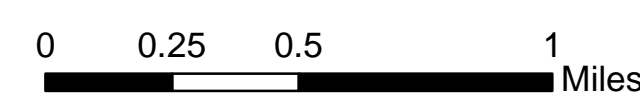


**Apalachicola
National Forest
Hurricane Michael
Response**
FL-FNF-018011

Timber Group Map
10/23/18



Major Roads

- Minor Arterial
- Minor Collector
- Local

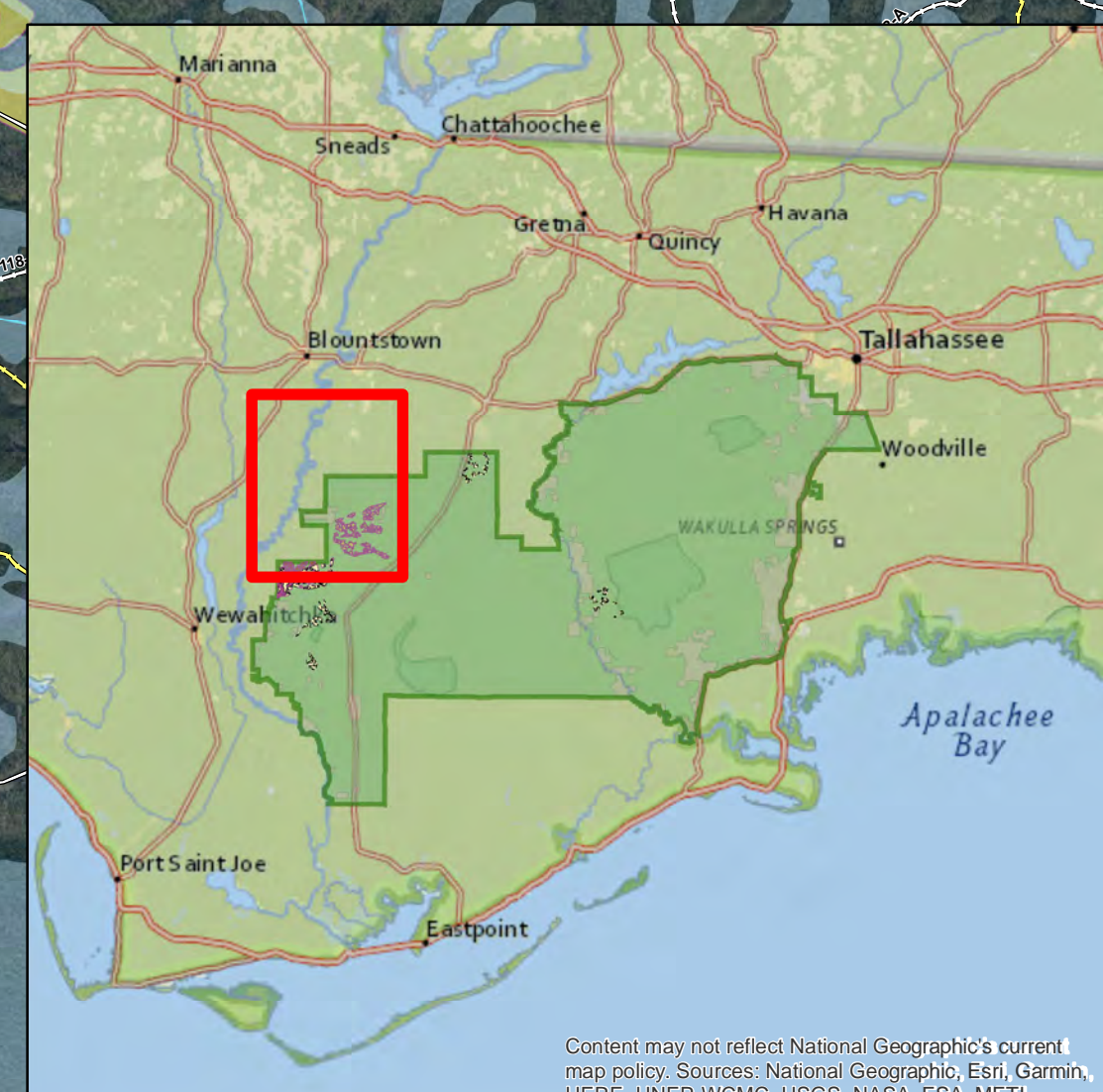
Forest Roads

- 5 - High Degree Of User Comfort
- 4 - Moderate Degree Of User Comfort
- 3 - Suitable For Passenger Cars

- 2 - High Clearance Vehicles
- 2 - High Clearance Vehicles (Admin Only)
- 1 - Basic Custodial Care (Closed)
- Cleared and Open

- ▭ Forest Boundary (Unofficial)
- ▭ Wetlands
- ▭ Timber Sale Unit
- ▭ GNA Compartment 25 Stands

- ▭ NEPA Project Area Stands
- ▭ Big Gully NEPA Stands



This map was produced by the SA Red Team GIS on 10/23/2018 at 10:23 Hours.
Data Projection: NAD 1983 StatePlane Florida North FIPS 0903 Feet