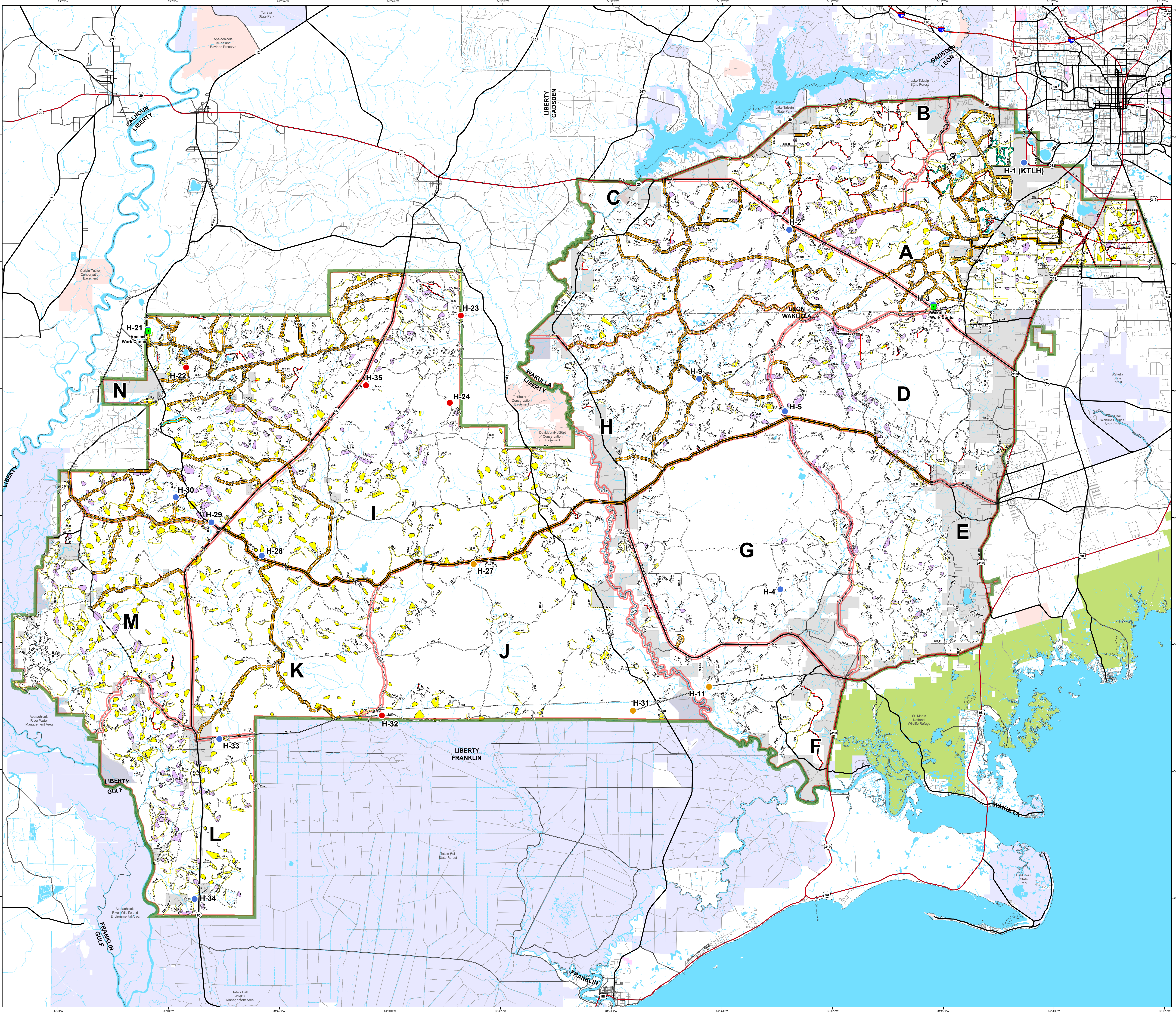
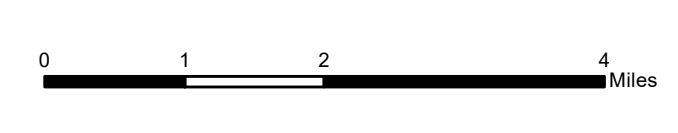


**Apalachicola National Forest
Hurricane Michael
Response
FL-FNF-018011
Wildlife Group
Map
10/25/18**



- Major Roads**
 - Interstate
 - Principal Arterial
 - Major Collector
 - Minor Arterial
 - Minor Collector
 - Local
- Forest Roads**
 - 5 - High Degree Of User Comfort
 - 4 - Moderate Degree Of User Comfort
 - 3 - Suitable For Passenger Cars
 - 2 - High Clearance Vehicles
 - 2 - High Clearance Vehicles (Admin Only)
 - 1 - Basic Custodial Care (Closed)
 - Forest Road Cleared
 - Trails
 - Trail Cleared
 - County Road
- Helispots**
 - Ready for Air Operations
 - Not Ready for Air Operations
 - Not Ready Hurricane Michael Impacts
- RCW Cluster Assessment**
 - RCW Assessment complete
 - RCW Assessment not complete
 - Work Center
 - ANF Inholdings Unofficial
 - Emergency Response Divisions
 - Forest Boundary (Unofficial)
 - County Boundary (Florida)
- OWNER**
 - USFWS
 - Local
 - Private
 - State

This map was produced by the SA Red Team GIS on 10/25/2018 at 2:17 PM.
Data Projection: NAD_1983_StatePlane_Florida_North_FIPS_0003_Feet

