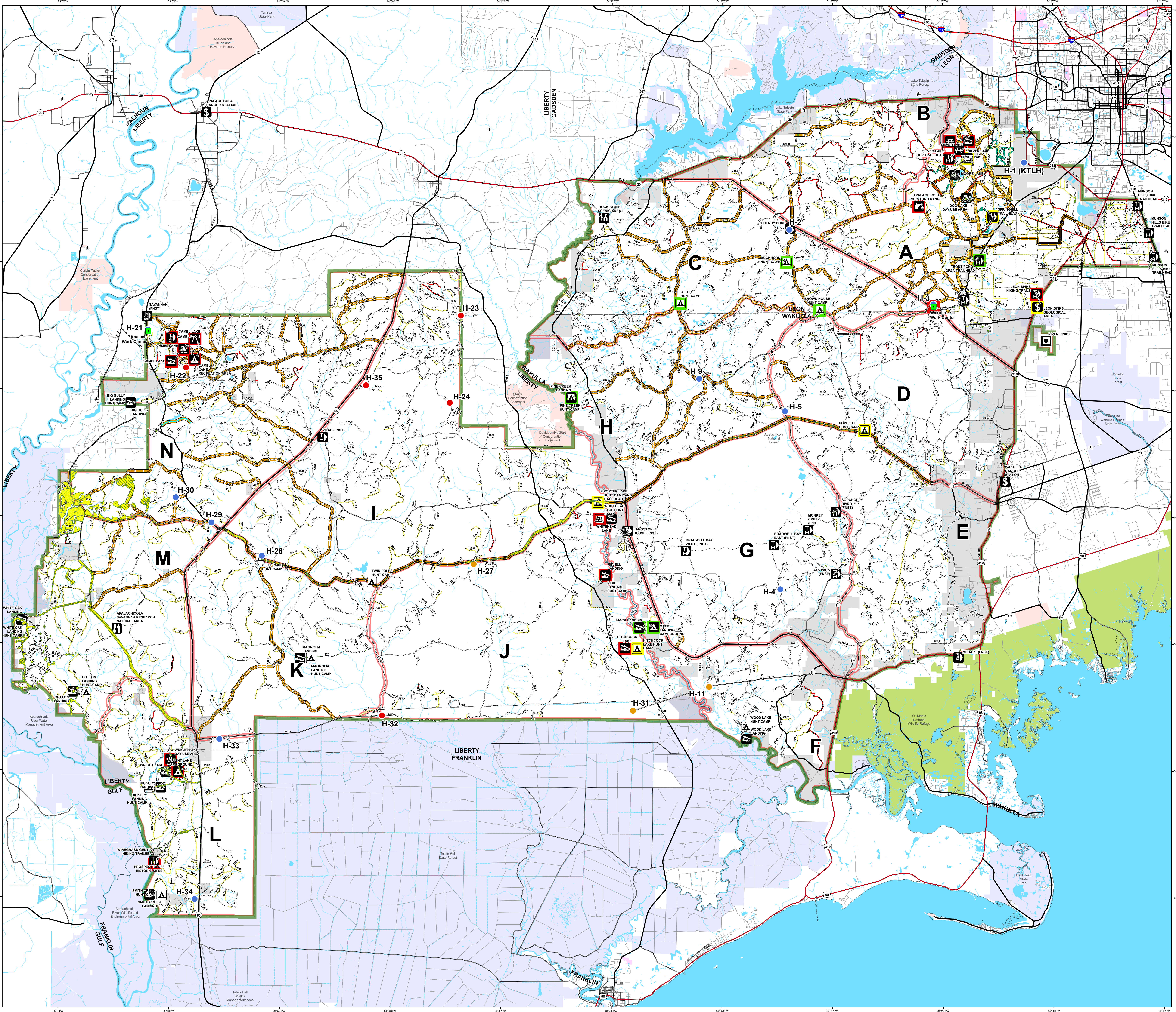
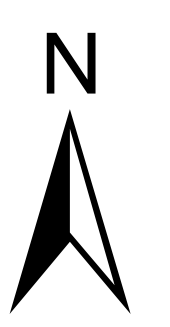
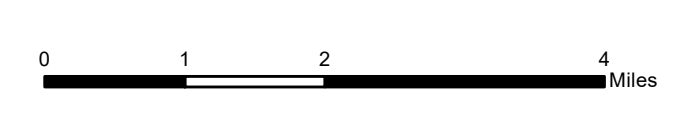


**Apalachicola National Forest  
Hurricane Michael  
Response  
FL-FNF-018011  
Operations Map**

10/26/18



- Rec Site**
- Boating Site
  - Campground
  - Camping Area
  - Day Use Area
  - Fishing Site
  - Info Site/Fee Station
  - Observation Site
  - Picnic Site
  - Swimming Site
  - Target Range
  - Trailhead
  - Wildlife Viewing Site
- Rec Site Assessment**
- Assessed
  - Assessed & Cleared
  - Assessed, Cleared & Hazard Trees Assessed
- Major Roads**
- Interstate
  - Principal Arterial
  - Major Collector
  - Minor Arterial
  - Minor Collector
  - Local
- Forest Roads**
- 5 - High Degree Of User Comfort
  - 4 - Moderate Degree Of User Comfort
  - 3 - Suitable For Passenger Cars
  - 2 - High Clearance Vehicles
  - 2 - High Clearance Vehicles (Admin Only)
  - 1 - Basic Custodial Care (Closed)
  - Forest Road Cleared
  - (XXX) Fireline Cleared
  - Trails
  - Trail Cleared
  - County Road
- Helispots**
- Ready for Air Operations
  - Not Ready for Air Operations
  - Not Ready Hurricane Michael Impacts
  - Work\_Center
  - ANF Inholdings Unofficial
  - Emergency Response Divisions
  - Forest Boundary (Unofficial)
  - County Boundary (Florida)
- OWNER**
- USFWS
  - Local
  - Private
  - State

This map was produced by the SA Red Team GIS on 10/25/2018 at 2:15 Hours.  
Data Projection: NAD\_1983\_StatePlane\_Florida\_North\_FIPS\_0903\_Feet

