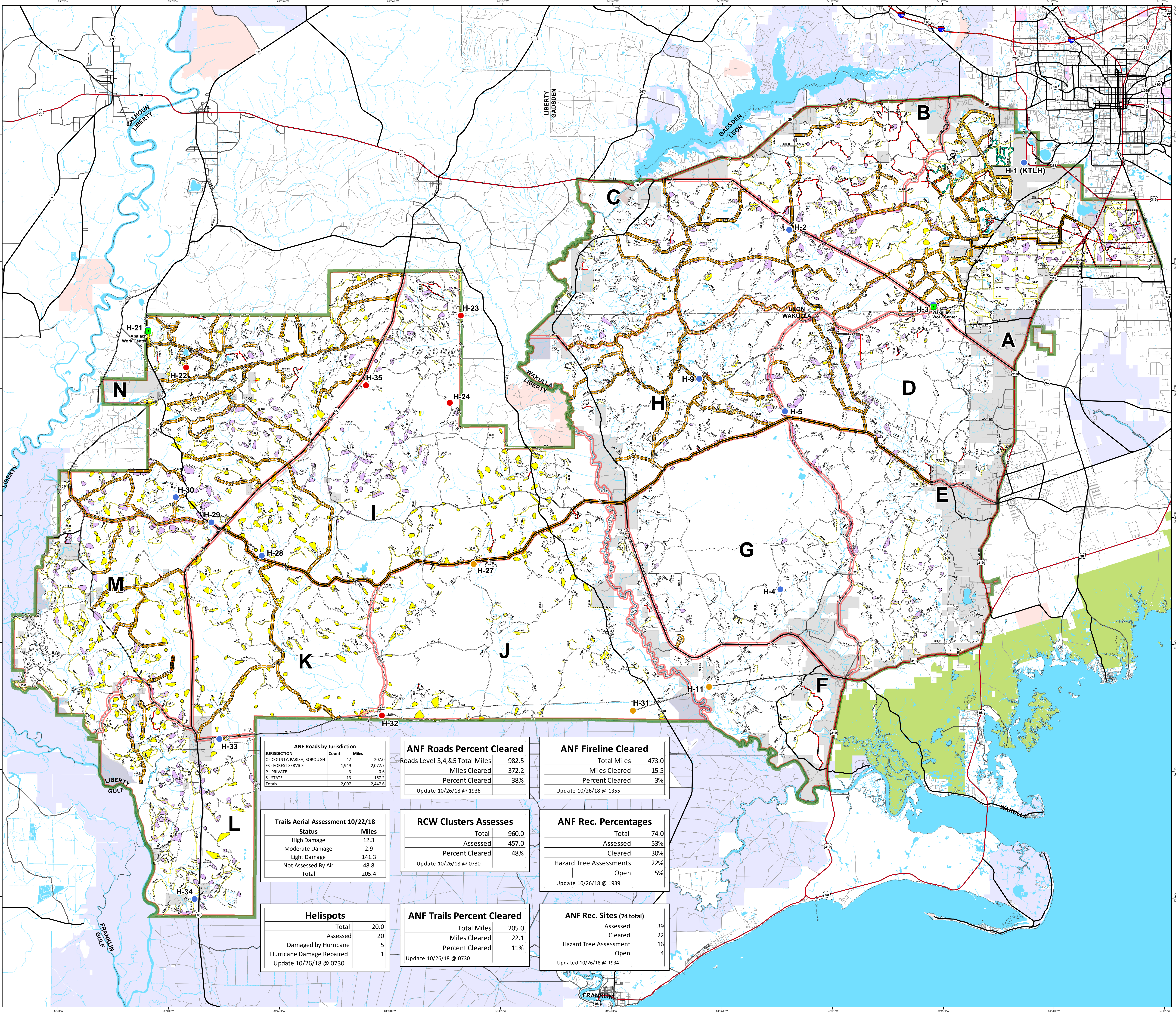
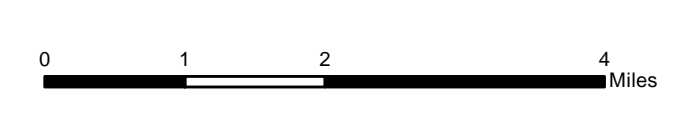


**Apalachicola National Forest  
Hurricane Michael  
Response  
FL-FNF-018011  
Wildlife Group  
10/27/18**



**Major Roads**

- Interstate
- Principal Arterial
- Major Collector
- Minor Arterial
- Minor Collector
- Local

**Forest Roads**

- 5 - High Degree Of User Comfort
- 4 - Moderate Degree Of User Comfort
- 3 - Suitable For Passenger Cars
- 2 - High Clearance Vehicles
- 2 - High Clearance Vehicles (Admin Only)
- 1 - Basic Custodial Care (Closed)
- Forest Road Cleared
- Trails
- Trail Cleared
- County Road

**Helispots**

- Ready for Air Operations
- Not Ready for Air Operations
- Not Ready Hurricane Michael Impacts

**RCW Cluster Assessment**

- RCW Assessment complete
- RCW Assessment not complete
- Work\_Center
- ANF Inholdings Unofficial
- Emergency Response Divisions
- Forest Boundary (Unofficial)
- County Boundary (Florida)

**OWNER**

- USFWS
- Local
- Private
- State

ANF Roads by Jurisdiction		
JURISDICTION	Count	Miles
C - COUNTY, PARISH, BOROUGH	42	207.0
F - FOREST SERVICE	1,949	2,072.7
P - PRIVATE	3	0.6
S - STATE	13	167.2
<b>Totals</b>	<b>2,007</b>	<b>2,447.6</b>

ANF Roads Percent Cleared	
Roads Level 3,4,&5 Total Miles	982.5
Miles Cleared	372.2
Percent Cleared	38%
Update 10/26/18 @ 1936	

ANF Fireline Cleared	
Total Miles	473.0
Miles Cleared	15.5
Percent Cleared	3%
Update 10/26/18 @ 1355	

Trails Aerial Assessment 10/22/18	
Status	Miles
High Damage	12.3
Moderate Damage	2.9
Light Damage	141.3
Not Assessed By Air	48.8
<b>Total</b>	<b>205.4</b>

RCW Clusters Assesses	
Total	960.0
Assessed	457.0
Percent Cleared	48%
Update 10/26/18 @ 0730	

ANF Rec. Percentages	
Total	74.0
Assessed	53%
Cleared	30%
Hazard Tree Assessments	22%
Open	5%
Update 10/26/18 @ 1939	

Helispots	
Total	20.0
Assessed	20
Damaged by Hurricane	5
Hurricane Damage Repaired	1
Update 10/26/18 @ 0730	

ANF Trails Percent Cleared	
Total Miles	205.0
Miles Cleared	22.1
Percent Cleared	11%
Update 10/26/18 @ 0730	

ANF Rec. Sites (74 total)	
Assessed	39
Cleared	22
Hazard Tree Assessment	16
Open	4
Updated 10/26/18 @ 1934	

This map was produced by the SA Red Team GIS on 10/26/2018 at 2008 Hours.  
Data Projection: NAD\_1983\_StatePlane\_Florida\_North\_FIPS\_0903\_Feet

