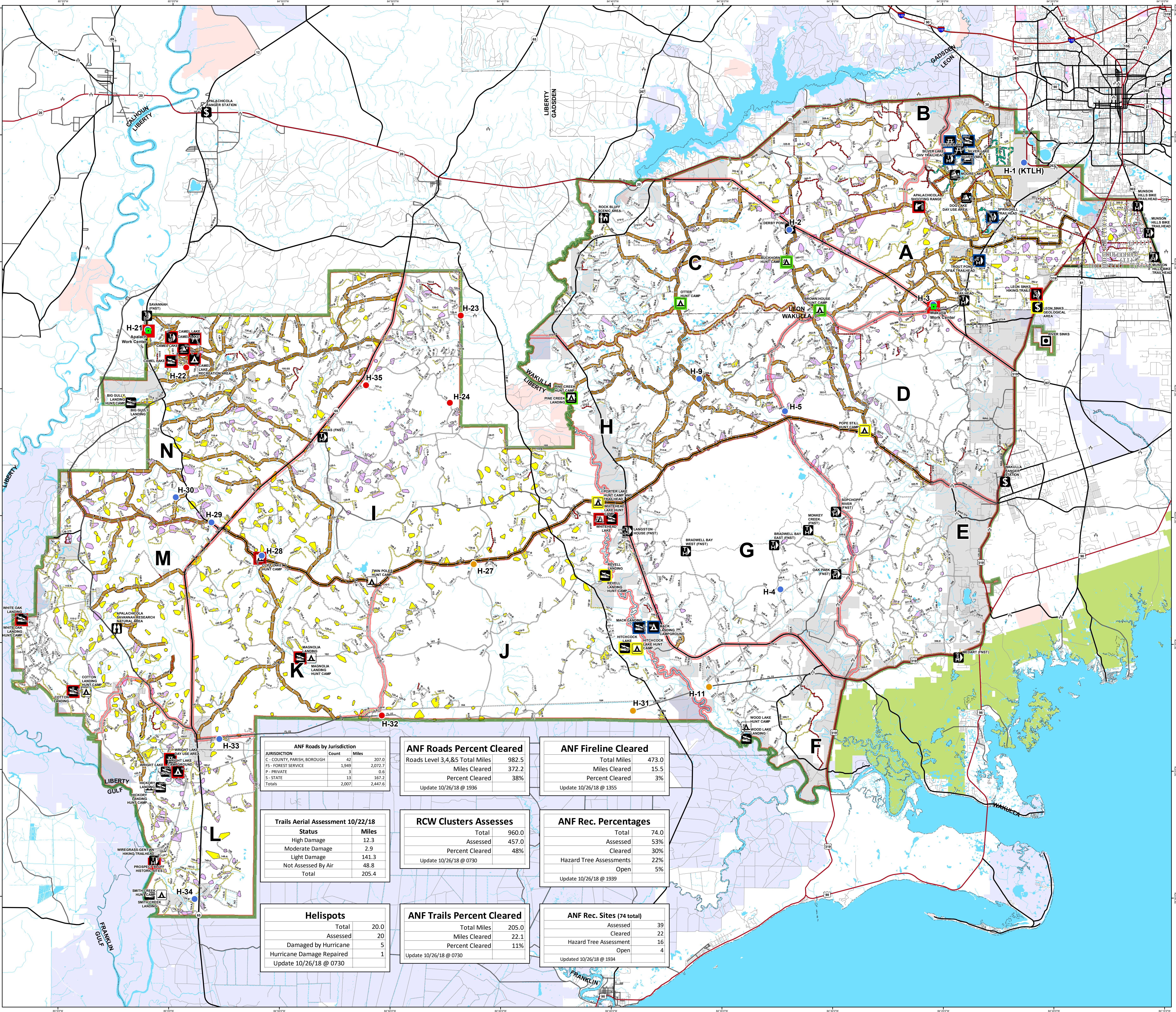
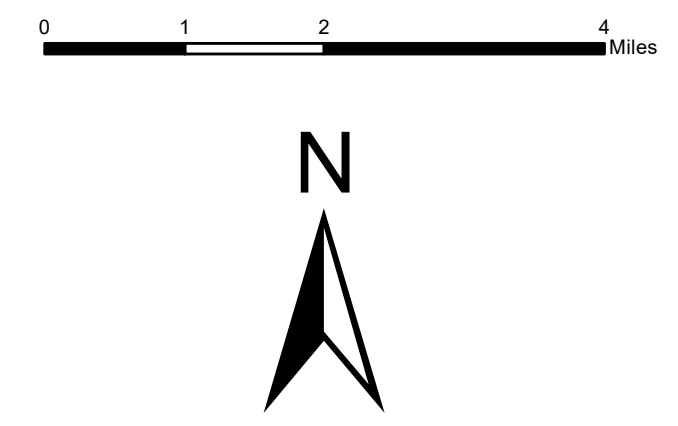


# Apalachicola National Forest Hurricane Michael Response

## FL-FNF-018011 Briefing Map

10/27/18



- Rec Site**
- Boating Site
  - Campground
  - Camping Area
  - Day Use Area
  - Fishing Site
  - Info Site/Fee Station
  - Observation Site
  - Picnic Site
  - Swimming Site
  - Target Range
  - Trailhead
  - Wildlife Viewing Site
- Rec Site Assessment**
- Assessed
  - Assessed & Cleared
  - Assessed, Cleared & Hazard Trees Assessed
  - Open
- Major Roads**
- Interstate
  - Principal Arterial
  - Major Collector
  - Minor Arterial
  - Minor Collector
  - Local
- Forest Roads**
- 5 - High Degree Of User Comfort
  - 4 - Moderate Degree Of User Comfort
  - 3 - Suitable For Passenger Cars
  - 2 - High Clearance Vehicles
  - 2 - High Clearance Vehicles (Admin Only)
  - 1 - Basic Custodial Care (Closed)
  - Forest Road Cleared
  - Fireline Cleared
  - Trails
  - Trail Cleared
  - County Road
- Helispots**
- Ready For Air Operations
  - Not Ready For Air Operations
  - Not Ready Hurricane Michael Impacts
- RCW Cluster Assessment**
- RCW Assessment complete
  - RCW Assessment not complete
  - Work Center
  - ANF Inholdings Unofficial
  - Emergency Response Divisions
  - Forest Boundary (Unofficial)
  - County Boundary (Florida)
- OWNER**
- USFWS
  - Local
  - Private
  - State

**ANF Roads by Jurisdiction**

JURISDICTION	Count	Miles
C - COUNTY, PARISH, BOROUGH	42	207.0
F - FOREST SERVICE	1,949	2,072.7
P - PRIVATE	3	0.6
S - STATE	13	167.2
<b>Totals</b>	<b>2,007</b>	<b>2,447.5</b>

**ANF Roads Percent Cleared**

Roads Level 3,4,&5 Total Miles	982.5
Miles Cleared	372.2
Percent Cleared	38%

Update 10/26/18 @ 1936

**ANF Fireline Cleared**

Total Miles	473.0
Miles Cleared	15.5
Percent Cleared	3%

Update 10/26/18 @ 1355

**Trails Aerial Assessment 10/22/18**

Status	Miles
High Damage	12.3
Moderate Damage	2.9
Light Damage	141.3
Not Assessed By Air	48.8
<b>Total</b>	<b>205.4</b>

**RCW Clusters Assesses**

Total	960.0
Assessed	457.0
Percent Cleared	48%

Update 10/26/18 @ 0730

**ANF Rec. Percentages**

Total	74.0
Assessed	53%
Cleared	30%
Hazard Tree Assessments	22%
Open	5%

Update 10/26/18 @ 1939

**Helispots**

Total	20.0
Assessed	20
Damaged by Hurricane	5
Hurricane Damage Repaired	1

Update 10/26/18 @ 0730

**ANF Trails Percent Cleared**

Total Miles	205.0
Miles Cleared	22.1
Percent Cleared	11%

Update 10/26/18 @ 0730

**ANF Rec. Sites (74 total)**

Assessed	39
Cleared	22
Hazard Tree Assessment	16
Open	4

Updated 10/26/18 @ 1934

This map was produced by the SA Red Team GIS on 10/26/2018 at 2010 Hours.

Data Projection: NAD\_1983\_StatePlane\_Florida\_North\_FIPS\_0003\_Feet

