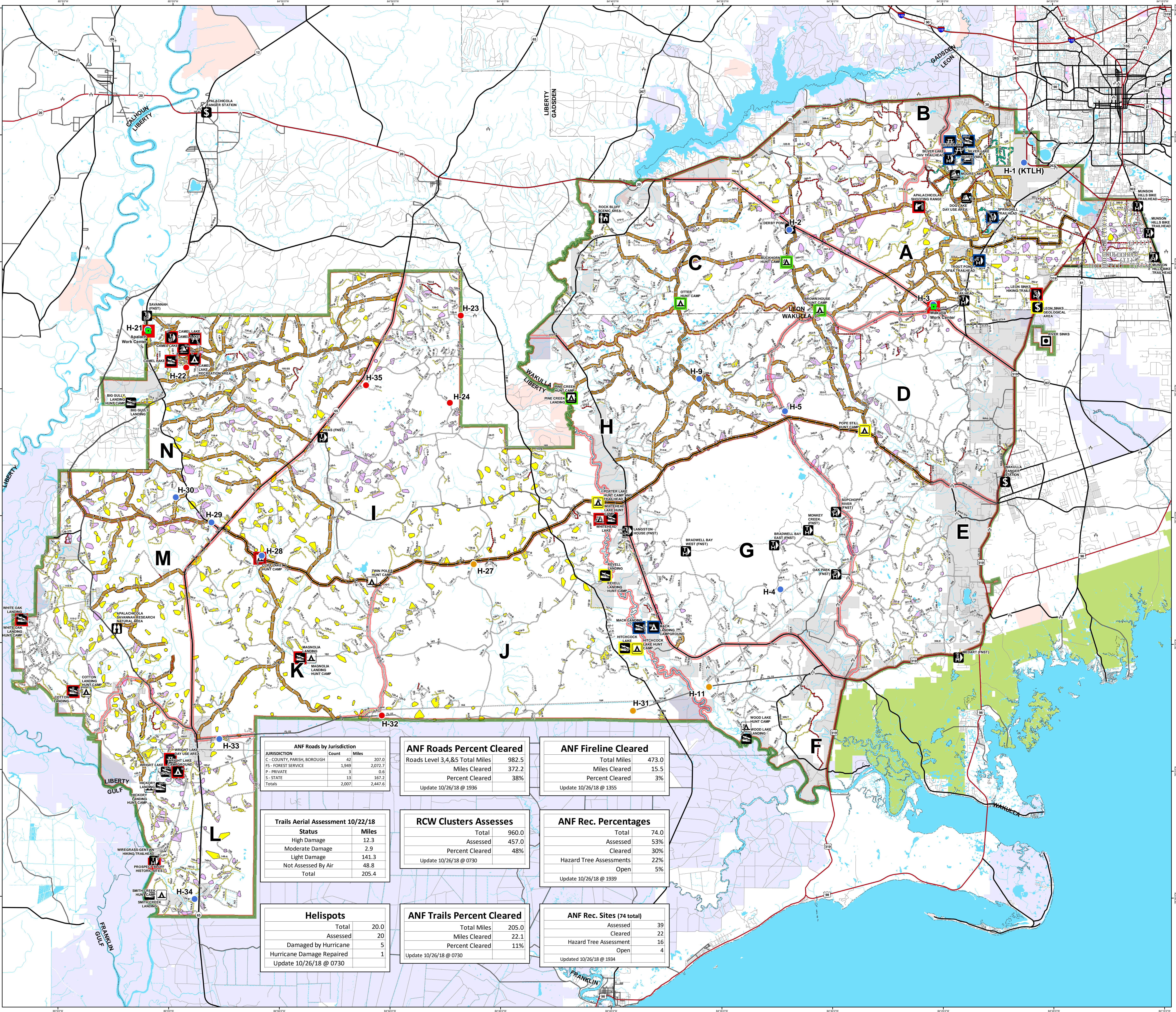
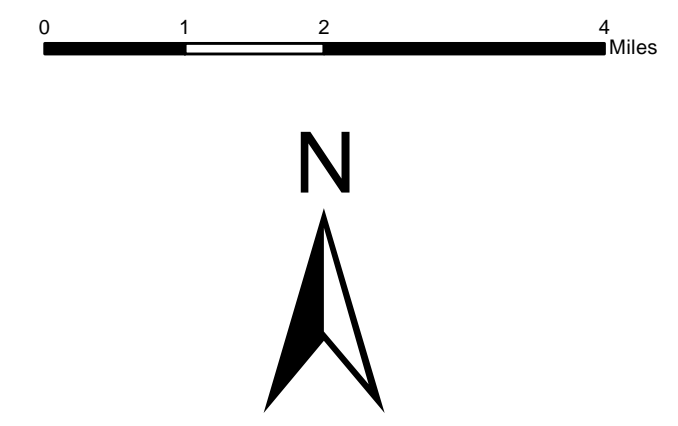


**Apalachicola National Forest
Hurricane Michael
Response
FL-FNF-018011
Briefing Map
10/27/18**



- Rec Site**
- Boating Site
 - Campground
 - Camping Area
 - Day Use Area
 - Fishing Site
 - Info Site/Fee Station
 - Observation Site
 - Picnic Site
 - Swimming Site
 - Target Range
 - Trailhead
 - Wildlife Viewing Site
- Rec Site Assessment**
- Assessed
 - Assessed & Cleared
 - Assessed, Cleared & Hazard Trees Assessed
 - Open
- Major Roads**
- Interstate
 - Prinipal Arterial
 - Major Collector
 - Minor Arterial
 - Minor Collector
 - Local
- Forest Roads**
- 5 - High Degree Of User Comfort
 - 4 - Moderate Degree Of User Comfort
 - 3 - Suitable For Passenger Cars
 - 2 - High Clearance Vehicles
 - 2 - High Clearance Vehicles (Admin Only)
 - 1 - Basic Custodial Care (Closed)
 - Forest Road Cleared
 - Fireline Cleared
 - Trails
 - Trail Cleared
 - County Road
- Helispots**
- Ready for Air Operations
 - Not Ready for Air Operations
 - Not Ready Hurricane Michael Impacts
- RCW Cluster Assessment**
- RCW Assessment complete
 - RCW Assessment not complete
 - Work_Center
 - ANF Inholdings Unofficial
 - Emergency Response Divisions
 - Forest Boundary (Unofficial)
 - County Boundary (Florida)
- OWNER**
- USFWS
 - Local
 - Private
 - State

ANF Roads by Jurisdiction

JURISDICTION	Count	Miles
C - COUNTY, PARISH, BOROUGH	42	207.0
F - FOREST SERVICE	1,949	2,072.7
P - PRIVATE	3	0.6
S - STATE	13	167.2
Totals	2,007	2,447.5

ANF Roads Percent Cleared

Roads Level 3,4,&5 Total Miles	982.5
Miles Cleared	372.2
Percent Cleared	38%

Update 10/26/18 @ 1936

ANF Fireline Cleared

Total Miles	473.0
Miles Cleared	15.5
Percent Cleared	3%

Update 10/26/18 @ 1355

Trails Aerial Assessment 10/22/18

Status	Miles
High Damage	12.3
Moderate Damage	2.9
Light Damage	141.3
Not Assessed By Air	48.8
Total	205.4

RCW Clusters Assesses

Total	960.0
Assessed	457.0
Percent Cleared	48%

Update 10/26/18 @ 0730

ANF Rec. Percentages

Total	74.0
Assessed	53%
Cleared	30%
Hazard Tree Assessments	22%
Open	5%

Update 10/26/18 @ 1939

Helispots

Total	20.0
Assessed	20
Damaged by Hurricane	5
Hurricane Damage Repaired	1

Update 10/26/18 @ 0730

ANF Trails Percent Cleared

Total Miles	205.0
Miles Cleared	22.1
Percent Cleared	11%

Update 10/26/18 @ 0730

ANF Rec. Sites (74 total)

Assessed	39
Cleared	22
Hazard Tree Assessment	16
Open	4

Updated 10/26/18 @ 1934

This map was produced by the SA Red Team GIS on 10/26/2018 at 2010 Hours.

Data Projection: NAD_1983_StatePlane_Florida_North_FIPS_0903_Feet

