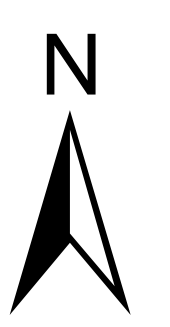
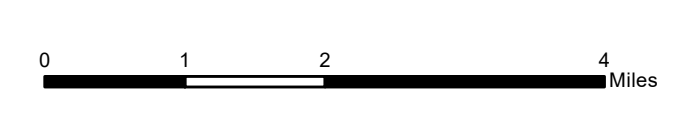
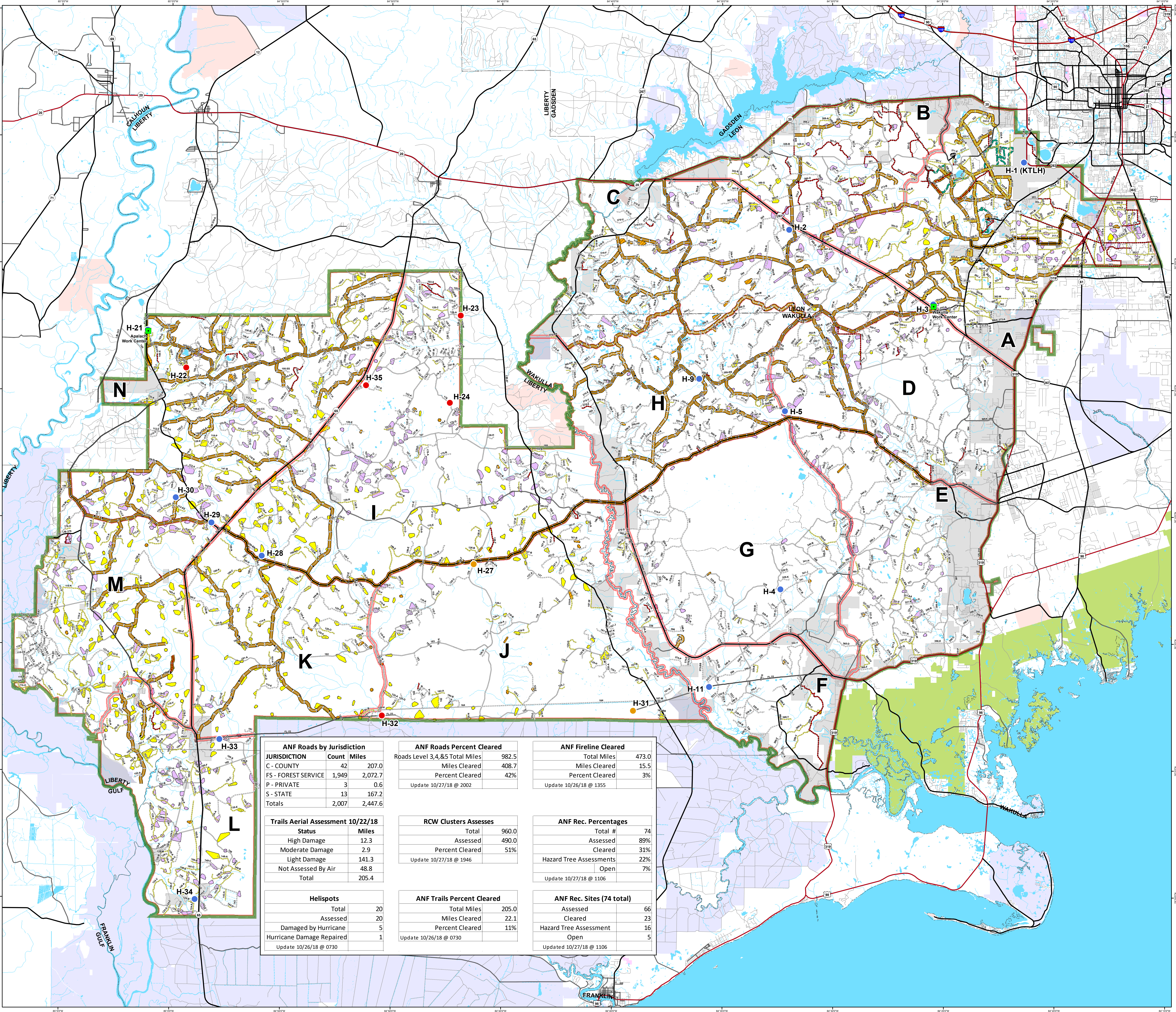


**Apalachicola National Forest  
Hurricane Michael  
Response  
FL-FNF-018011  
Wildlife Group  
10/28/18**



- Major Roads**
- Interstate
  - Principal Arterial
  - Major Collector
  - Minor Arterial
  - Minor Collector
  - Local
- Forest Roads**
- 5 - High Degree Of User Comfort
  - 4 - Moderate Degree Of User Comfort
  - 3 - Suitable For Passenger Cars
  - 2 - High Clearance Vehicles (Admin Only)
  - 2 - High Clearance Vehicles (Admin Only)
  - 1 - Basic Custodial Care (Closed)
  - Forest Road Cleared
  - Trail Cleared
  - County Road
- Helispots**
- Ready for Air Operations
  - Not Ready for Air Operations
  - Not Ready Hurricane Michael Impacts
- RCW Cluster Assessment**
- RCW Assessment complete
  - RCW Assessment not complete
  - Other RCW Cluster
  - Work Center
  - ANF Inholdings Unofficial
  - Emergency Response Divisions
  - Forest Boundary (Unofficial)
  - County Boundary (Florida)
- OWNER**
- USFWS
  - Local
  - Private
  - State



ANF Roads by Jurisdiction		
JURISDICTION	Count	Miles
C - COUNTY	42	207.0
FS - FOREST SERVICE	1,949	2,072.7
P - PRIVATE	3	0.6
S - STATE	13	167.2
<b>Totals</b>	<b>2,007</b>	<b>2,447.6</b>

ANF Roads Percent Cleared		
Roads Level 3,4,&5 Total Miles	982.5	
Miles Cleared	408.7	
Percent Cleared	42%	
Update 10/27/18 @ 2002		

ANF Fireline Cleared		
Total Miles	473.0	
Miles Cleared	15.5	
Percent Cleared	3%	
Update 10/26/18 @ 1355		

Trails Aerial Assessment 10/22/18		
Status	Miles	
High Damage	12.3	
Moderate Damage	2.9	
Light Damage	141.3	
Not Assessed By Air	48.8	
<b>Total</b>	<b>205.4</b>	

RCW Clusters Assesses		
Total	960.0	
Assessed	490.0	
Percent Cleared	51%	
Update 10/27/18 @ 1946		

ANF Rec. Percentages		
Total #	74	
Assessed	89%	
Cleared	31%	
Hazard Tree Assessments	22%	
Open	7%	
Update 10/27/18 @ 1106		

Helispots		
Total	20	
Assessed	20	
Damaged by Hurricane	5	
Hurricane Damage Repaired	1	
Update 10/26/18 @ 0730		

ANF Trails Percent Cleared		
Total Miles	205.0	
Miles Cleared	22.1	
Percent Cleared	11%	
Update 10/26/18 @ 0730		

ANF Rec. Sites (74 total)		
Assessed	66	
Cleared	23	
Hazard Tree Assessment	16	
Open	5	
Updated 10/27/18 @ 1106		

This map was produced by the SA Red Team GIS on 10/27/2018 at 2011 Hours.  
Data Projection: NAD\_1983\_StatePlane\_Florida\_North\_FIPS\_0003\_Feet

