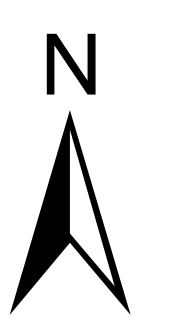
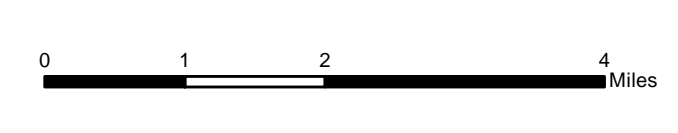
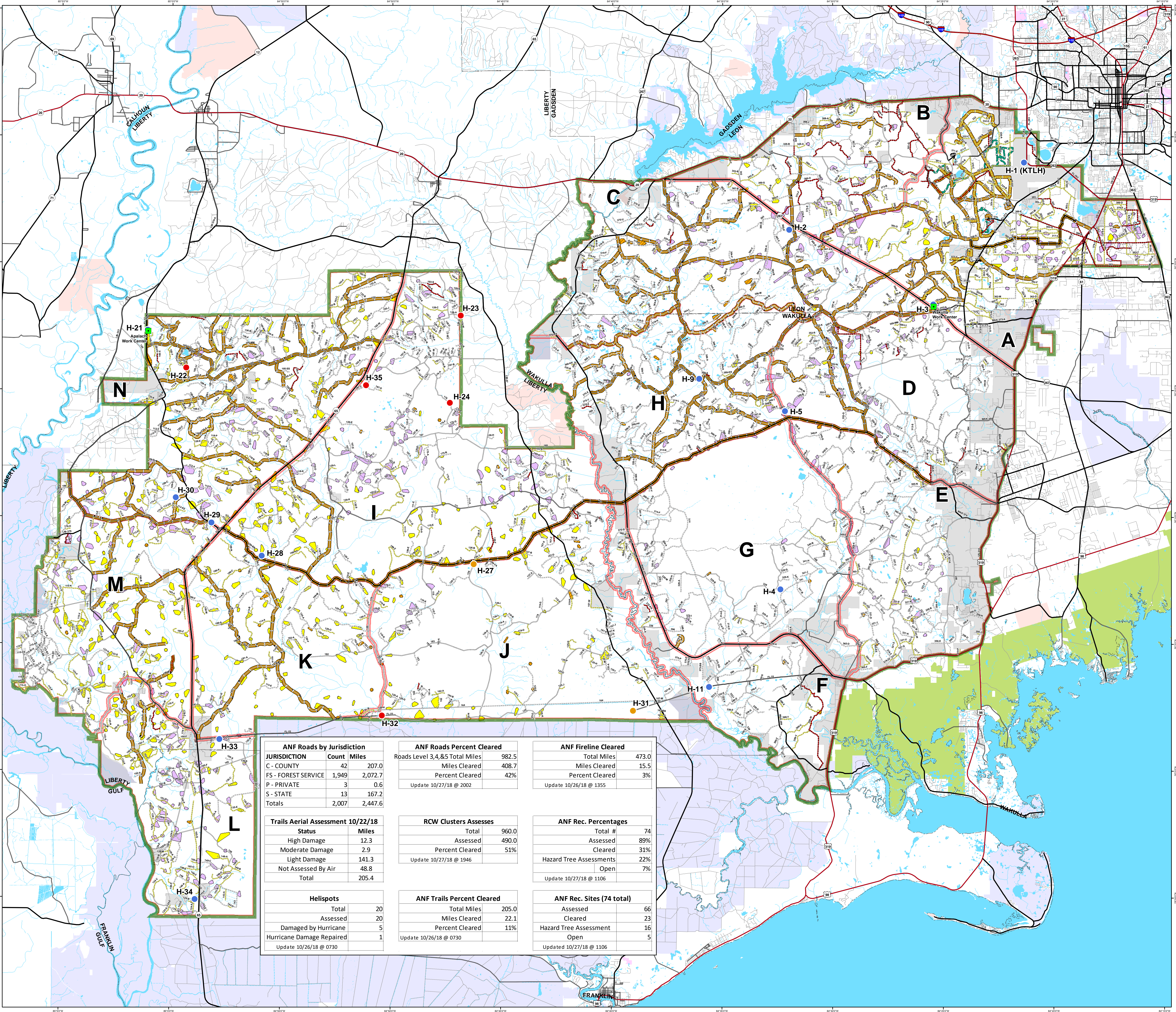


**Apalachicola National Forest
Hurricane Michael
Response
FL-FNF-018011
Wildlife Group
10/28/18**



- Major Roads**
- Interstate
 - Principal Arterial
 - Major Collector
 - Minor Arterial
 - Minor Collector
 - Local
- Forest Roads**
- 5 - High Degree Of User Comfort
 - 4 - Moderate Degree Of User Comfort
 - 3 - Suitable For Passenger Cars
 - 2 - High Clearance Vehicles
 - 2 - High Clearance Vehicles (Admin Only)
 - 1 - Basic Custodial Care (Closed)
 - Forest Road Cleared
 - Trail Cleared
 - County Road
- Helispots**
- Ready for Air Operations
 - Not Ready for Air Operations
 - Not Ready Hurricane Michael Impacts
- RCW Cluster Assessment**
- RCW Assessment complete
 - RCW Assessment not complete
 - Other RCW Cluster
 - Work Center
 - ANF Inholdings Unofficial
 - Emergency Response Divisions
 - Forest Boundary (Unofficial)
 - County Boundary (Florida)
- OWNER**
- USFWS
 - Local
 - Private
 - State



ANF Roads by Jurisdiction		
JURISDICTION	Count	Miles
C - COUNTY	42	207.0
FS - FOREST SERVICE	1,949	2,072.7
P - PRIVATE	3	0.6
S - STATE	13	167.2
Totals	2,007	2,447.6

ANF Roads Percent Cleared		
Roads Level 3,4,&5 Total Miles	982.5	
Miles Cleared	408.7	
Percent Cleared	42%	
Update 10/27/18 @ 2002		

ANF Fireline Cleared		
Total Miles	473.0	
Miles Cleared	15.5	
Percent Cleared	3%	
Update 10/26/18 @ 1355		

Trails Aerial Assessment 10/22/18		
Status	Miles	
High Damage	12.3	
Moderate Damage	2.9	
Light Damage	141.3	
Not Assessed By Air	48.8	
Total	205.4	

RCW Clusters Assesses		
Total	960.0	
Assessed	490.0	
Percent Cleared	51%	
Update 10/27/18 @ 1946		

ANF Rec. Percentages		
Total #	74	
Assessed	89%	
Cleared	31%	
Hazard Tree Assessments	22%	
Open	7%	
Update 10/27/18 @ 1106		

Helispots		
Total	20	
Assessed	20	
Damaged by Hurricane	5	
Hurricane Damage Repaired	1	
Update 10/26/18 @ 0730		

ANF Trails Percent Cleared		
Total Miles	205.0	
Miles Cleared	22.1	
Percent Cleared	11%	
Update 10/26/18 @ 0730		

ANF Rec. Sites (74 total)		
Assessed	66	
Cleared	23	
Hazard Tree Assessment	16	
Open	5	
Updated 10/27/18 @ 1106		

This map was produced by the SA Red Team GIS on 10/27/2018 at 2011 Hours.
Data Projection: NAD_1983_StatePlane_Florida_North_FIPS_0903_Feet

