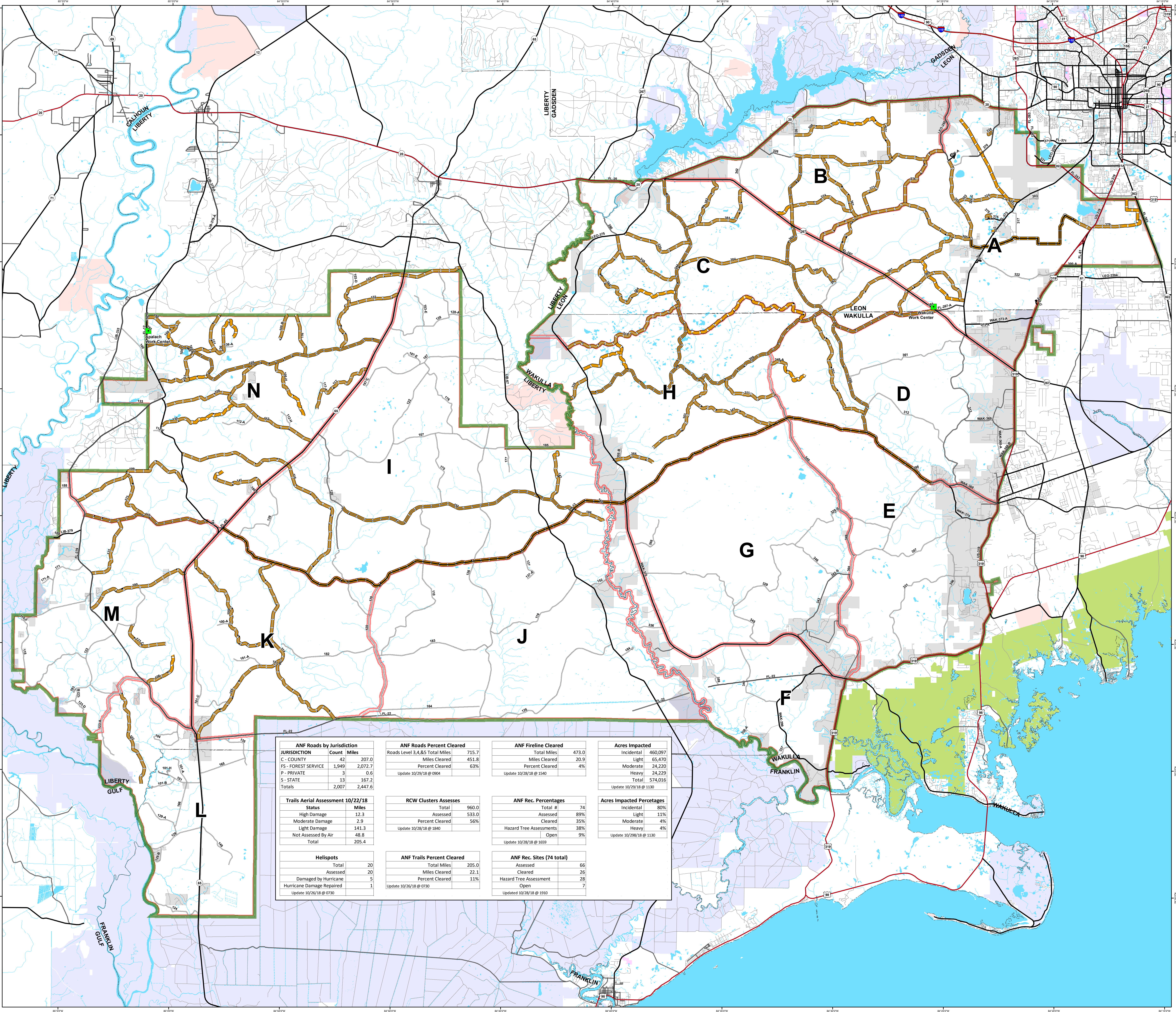
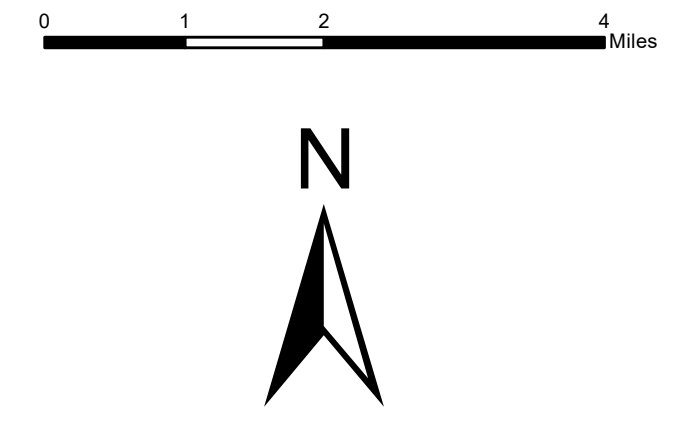


**Apalachicola National Forest
Hurricane Michael
Response
FL-FNF-018011
Forest Roads
Levels 3, 4, 5
Map
10/29/18**



- Major Roads**
- Interstate
 - Principal Arterial
 - Major Collector
 - Minor Arterial
 - Minor Collector
 - Local
- Forest Roads**
- 5 - High Degree Of User Comfort
 - 4 - Moderate Degree Of User Comfort
 - 3 - Suitable For Passenger Cars
 - Forest Roads Cleared
 - County Road
 - Work_Center
 - ANF Inholdings Unofficial
 - Emergency Response Divisions
 - Forest Boundary (Unofficial)
 - County Boundary (Florida)
- OWNER**
- USFWS
 - Local
 - Private
 - State

ANF Roads by Jurisdiction		ANF Roads Percent Cleared		ANF Fireline Cleared		Acres Impacted	
JURISDICTION	Count Miles	Roads Level 3,4,5 Total Miles	Miles Cleared	Total Miles	Miles Cleared	Incidental	Light
C - COUNTY	42 207.0	715.7	451.8	473.0	20.9	460,097	65,470
FS - FOREST SERVICE	1,949 2,072.7						24,220
P - PRIVATE	3 0.6						24,229
S - STATE	13 167.2						574,016
Totals	2,007 2,447.6						
Trails Aerial Assessment 10/22/18 Status Miles High Damage 12.3 Moderate Damage 2.9 Light Damage 141.3 Not Assessed By Air 48.8 Total 205.4		RCW Clusters Assesses Total 960.0 Assessed 533.0 Percent Cleared 56% Update 10/28/18 @ 1840		ANF Rec. Percentages Total # 74 Assessed 89% Cleared 35% Hazard Tree Assessments 38% Open 9% Update 10/28/18 @ 1659		Acres Impacted Percentages Incidental 80% Light 11% Moderate 4% Heavy 4% Update 10/28/18 @ 1130	
Helispots Total 20 Assessed 20 Damaged by Hurricane 5 Hurricane Damage Repaired 1 Update 10/26/18 @ 0730		ANF Trails Percent Cleared Total Miles 205.0 Miles Cleared 22.1 Percent Cleared 11% Update 10/26/18 @ 0730		ANF Rec. Sites (74 total) Assessed 66 Cleared 26 Hazard Tree Assessment 28 Open 7 Update 10/28/18 @ 1310			

This map was produced by the SA Red Team GIS on 10/29/2018 at 1511 Hours.
Data Projection: NAD_1983_StatePlane_Florida_North_FIPS_0903_Feet

